

Uro-Oncology Update 1991, January 12, 1991, The Ritz-Carlton Hotel, Boston, Massachusetts. Course Directors: Richard K. Babayan, MD, and Paul J. Hesketh, MD. Fee: \$75. Credits: 4. Contact: Maryjane Nolan, Department of Continuing Medical Education, Boston University School of Medicine, 80 East Concord Street, Boston, MA 02118-2394. Telephone: (617) 638-4605.

Oncogenic Mechanisms in Radiation-induced Cancer, January 16–19, 1991, Holiday Inn University Park, Fort Collins, Colorado. Deadline for registration: October 15, 1990. Contact: Dr. M. M. Elkind, Chairman, Kettering/RRS Workshop, Department of Radiology & Radiation Biology, Colorado State University, Fort Collins, CO 80523.

International Meeting of the Electrophoresis Societies, March 19–21, 1991, Sheraton Washington Hotel, Washington, DC. Deadline for submission of abstracts: September 1, 1990. Contact: Janet E. Cunningham, International Electrophoresis Society, c/o Barr Enterprises, P.O. Box 279, Walkersville, MD 21793. Telephone: (301) 898-3772. FAX: (301) 898-5596.

First International Symposium on Hormonal Carcinogenesis, March 19–23, 1991, Hyatt Regency Cancun, Cancun, Mexico. Contact: Dr. Jonathan J. Li, Hormonal Carcinogenesis Laboratory, Wegner Hall, School of Pharmacy, Washington State University, Pullman, WA 99164-6510.

Eighth International Symposium of Preparative Chromatography, May 13–15, 1991, Key Bridge Marriott Hotel, Arlington, VA. Chairman: Professor Georges Guiochon. Deadline for submission of abstracts: November 15, 1990. Contact: Janet E. Cunningham, International Electrophoresis Society, c/o Barr Enterprises, P.O. Box 279, Walkersville, MD 21793. Telephone: (301) 898-3772. FAX: (301) 898-5596.

Eleventh International Symposium on HPLC of Proteins, Peptides, and Polynucleotides, October 20–23, 1991, Sheraton Washington Hotel, Washington, DC. Deadline for submission of abstracts: June 3, 1991. Contact: Janet E. Cunningham, International Electrophoresis Society, c/o Barr Enterprises, P.O. Box 279, Walkersville, MD 21793. Telephone: (301) 898-3772. FAX: (301) 898-5596.

## Errata

We were recently informed about a typographical error in the article by A. W. Tong *et al.*, entitled “Elimination of Chemoresistant Multiple Myeloma Clonogenic Colony-forming Cells by Combined Treatment with a Plasma Cell-reactive Monoclonal Antibody and a P-Glycoprotein-reactive Monoclonal Antibody,” (*Cancer Res.*, 49: 4829–4834, September 1, 1989). On page 4830, the first line after the equation in the right-hand column should read: “where  $X_0 = \ln$  initial dose =  $\ln 10^{-1}$ ” instead of “where  $X_0 = \ln$  initial dose =  $\ln 10$ .”

In two articles in the March 15, 1990 issue of *Cancer Research* by N. Kaneda (N. Kaneda *et al.*, “Metabolism and Pharmacokinetics of the Camptothecin Analogue CPT-11 in the Mouse,” *Cancer Res.*, 50: 1715–1720, 1990) and N. Kaneda and T. Yokokura, “Nonlinear Pharmacokinetics of CPT-11 in Rats,” *Cancer Res.*, 50: 1721–1725, 1990, the structures of CPT-11, SN-38, and CPT depicted in Figure 1 of each paper were not accurate. The correct structures are printed below.

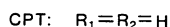
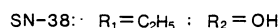
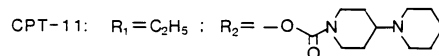
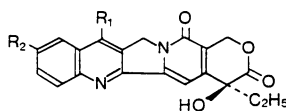


Fig. 1. Structures of CPT-11, SN-38, and CPT.