



# Effects of GLP-1 and GIP on Islet Function in Glucose-Intolerant, Pancreatic-Insufficient Cystic Fibrosis

Sarah C. Nyirjesy,<sup>1</sup> Amy J. Peleckis,<sup>1</sup> Jack N. Eiel,<sup>1</sup> Kathryn Gallagher,<sup>1</sup> Andriana Doliba,<sup>1</sup> Abigail Tami,<sup>1</sup> Anneliese J. Flatt,<sup>1</sup> Diva D. De Leon,<sup>2</sup> Denis Hadjiliadis,<sup>3</sup> Saba Sheikh,<sup>4</sup> Darko Stefanovski,<sup>5</sup> Robert Gallop,<sup>6,7</sup> David A. D'Alessio,<sup>8</sup> Ronald C. Rubenstein,<sup>9</sup> Andrea Kelly,<sup>2</sup> and Michael R. Rickels<sup>1</sup>

*Diabetes* 2022;71:2153–2165 | <https://doi.org/10.2337/db22-0399>

**Impaired insulin and incretin secretion underlie abnormal glucose tolerance (AGT) in pancreatic insufficient cystic fibrosis (PI-CF). Whether the incretin hormones glucagon-like peptide-1 (GLP-1) and glucose-dependent insulinotropic polypeptide (GIP) can enhance pancreatic islet function in cystic fibrosis (CF) is not known. We studied 32 adults with PI-CF and AGT randomized to receive either GLP-1 ( $n = 16$ ) or GIP ( $n = 16$ ) during glucose-potentiated arginine (GPA) testing of islet function on two occasions, with either incretin or placebo infused, in a randomized, double-blind, cross-over fashion. Another four adults with PI-CF and normal glucose tolerance (NGT) and four matched control participants without CF underwent similar assessment with GIP. In PI-CF with AGT, GLP-1 substantially augmented second-phase insulin secretion but without effect on the acute insulin response to GPA or the proinsulin secretory ratio (PISR), while GIP infusion did not enhance second-phase or GPA-induced insulin secretion but increased the PISR. GIP also did not enhance second-phase insulin in PI-CF with NGT but did so markedly in control participants without CF controls. These data indicate that GLP-1, but not GIP, augments glucose-dependent insulin secretion in PI-CF, supporting the likelihood that GLP-1 agonists could have therapeutic benefit in this**

**population. Understanding loss of GIP's insulinotropic action in PI-CF may lead to novel insights into diabetes pathogenesis.**

Cystic fibrosis (CF) is caused by autosomal recessive inheritance of loss-of-function mutations affecting the gene encoding the cystic fibrosis transmembrane conductance regulator (CFTR), an anion channel important to bicarbonate and chloride transport across epithelial membranes. Loss of CFTR function results in multiorgan dysfunction that typically first manifests as exocrine pancreatic insufficiency and, later, impaired respiratory secretion clearance and pulmonary inflammation leading to sinopulmonary infections, deterioration in lung function, and ultimately, respiratory failure. Cystic fibrosis-related diabetes (CFRD) develops in ~40% of individuals with CF by age 30 years and is associated with up to sixfold greater mortality (1). CFRD primarily develops in individuals with pancreatic-insufficient CF (PI-CF) (2) due to progressive loss of meal-related insulin secretion (3) and is associated with deterioration in nutritional status and pulmonary function that contribute to the increased mortality risk (4).

<sup>1</sup>Division of Endocrinology, Diabetes and Metabolism, Department of Medicine, Hospital of the University of Pennsylvania, Philadelphia, PA

<sup>2</sup>Division of Endocrinology and Diabetes, Department of Pediatrics, Children's Hospital of Philadelphia, Philadelphia, PA

<sup>3</sup>Division of Pulmonary and Critical Care Medicine, Department of Medicine, Hospital of the University of Pennsylvania, Philadelphia, PA

<sup>4</sup>Division of Pulmonary Medicine, Department of Pediatrics, Children's Hospital of Philadelphia, Philadelphia, PA

<sup>5</sup>New Bolton Center, University of Pennsylvania School of Veterinary Medicine, Kennett Square, PA

<sup>6</sup>Department of Biostatistics, University of Pennsylvania School of Medicine, Philadelphia, PA

<sup>7</sup>Department of Mathematics, West Chester University of Pennsylvania, West Chester, PA

<sup>8</sup>Division of Endocrinology and Metabolism, Department of Medicine, Duke University School of Medicine, Durham, NC

<sup>9</sup>Division of Allergy and Pulmonary Medicine, Department of Pediatrics, Washington University School of Medicine, St. Louis, MO

Corresponding authors: Andrea Kelly, [kellya@email.chop.edu](mailto:kellya@email.chop.edu), and Michael R. Rickels, [rickels@penmedicine.upenn.edu](mailto:rickels@penmedicine.upenn.edu)

Received 28 April 2022 and accepted 1 July 2022

Clinical trial reg. no. NCT01851694, [clinicaltrials.gov](https://clinicaltrials.gov)

This article contains supplementary material online at <https://doi.org/10.2337/figshare.20213744>.

© 2022 by the American Diabetes Association. Readers may use this article as long as the work is properly cited, the use is educational and not for profit, and the work is not altered. More information is available at <https://www.diabetesjournals.org/journals/pages/license>.

Exocrine pancreatic insufficiency and related digestive abnormalities may diminish the actions of the enteroinsular axis, a key mechanism mediating prandial insulin secretion (5,6). Impaired nutrient digestion leads to reduced secretion of the incretin hormones glucagon-like peptide-1 (GLP-1) and glucose-dependent insulinotropic polypeptide (GIP) from intestinal L and K cells, respectively (5,6). GLP-1 and GIP both augment insulin production and glucose-dependent insulin secretion by pancreatic islet  $\beta$ -cells, with reciprocal effects on islet  $\alpha$ -cells (i.e., GLP-1 inhibits and GIP stimulates glucagon secretion) (7). Optimization of pancreatic enzyme replacement improves GLP-1 and GIP responses to nutrient ingestion in CF and improves, but does not normalize, postprandial insulin secretion and glucose tolerance (8). However, pancreatic enzyme replacement does not mimic normal exocrine pancreatic physiology, and compliance with pancreatic enzyme replacement is unlikely optimal over a lifetime of multiple daily meal exposures and still does not normalize GIP secretion (8,9) that is more dependent than GLP-1 secretion on fat digestion.

Whether the insulinotropic actions of GLP-1 and GIP are also compromised in individuals with PI-CF is unknown. In type 2 diabetes,  $\beta$ -cell responsiveness to GLP-1 is preserved, but  $\beta$ -cell responsiveness to GIP is lost (10,11), presumably due to hyperglycemia-mediated downregulation of GIP receptor expression (12). Importantly, individuals without CF but with impaired glucose tolerance, although not overt diabetes, maintain  $\beta$ -cell responsiveness to GIP (13). Because functional CFTR is important for islet  $\beta$ -cell, and possibly  $\alpha$ -cell, function (14), understanding whether loss of CFTR function may affect islet-cell responsiveness to incretin hormones in PI-CF is important to determine whether the incretin system may be an effective therapeutic target for CFRD prevention or treatment. This study was designed to investigate pancreatic islet  $\beta$ - and  $\alpha$ -cell responsiveness to acute administration of either GLP-1 or GIP in PI-CF.

## RESEARCH DESIGN AND METHODS

### Participants

All participants were aged  $\geq 18$  years and had completed a 75-g oral glucose tolerance test (OGTT) within 6 months prior to enrollment. CF diagnosis was confirmed by *CFTR* mutation analysis or positive sweat test per the Cystic Fibrosis Foundation diagnostic criteria (15), and pancreatic insufficiency was confirmed by requirement for pancreatic enzyme supplementation. The initial group of participants studied had PI-CF with abnormal glucose tolerance (AGT) defined by an OGTT as either early glucose intolerance (1-h glucose  $\geq 155$  mg/dL, 2-h glucose  $< 140$  mg/dL), impaired glucose tolerance (2-h glucose  $\geq 140$  mg/dL and  $< 200$  mg/dL), or CFRD (2-h glucose  $\geq 200$  mg/dL or previously confirmed diagnosis) without fasting hyperglycemia (fasting glucose  $< 126$  mg/dL) that we have previously associated with impaired  $\beta$ -cell function (3). Individuals having CFRD with fasting hyperglycemia were excluded to

ensure participants maintained a sufficient  $\beta$ -cell secretory reserve that could respond to stimulation.

To control for possible effects of hyperglycemia affecting GIP action, additional participants with PI-CF and matched control participants without CF and with normal glucose tolerance (NGT), defined by 1-h glucose  $< 155$  mg/dL and 2-h glucose  $< 140$  mg/dL, were also studied. Those with PI-CF and NGT were further required to harbor at least one class I, II, or III mutation, and for class III mutations, participants were excluded if receiving they ivacaftor alone or as part of combination CFTR modulator treatment. Additional protocol details are available at ClinicalTrials.gov (identifier: NCT01851694).

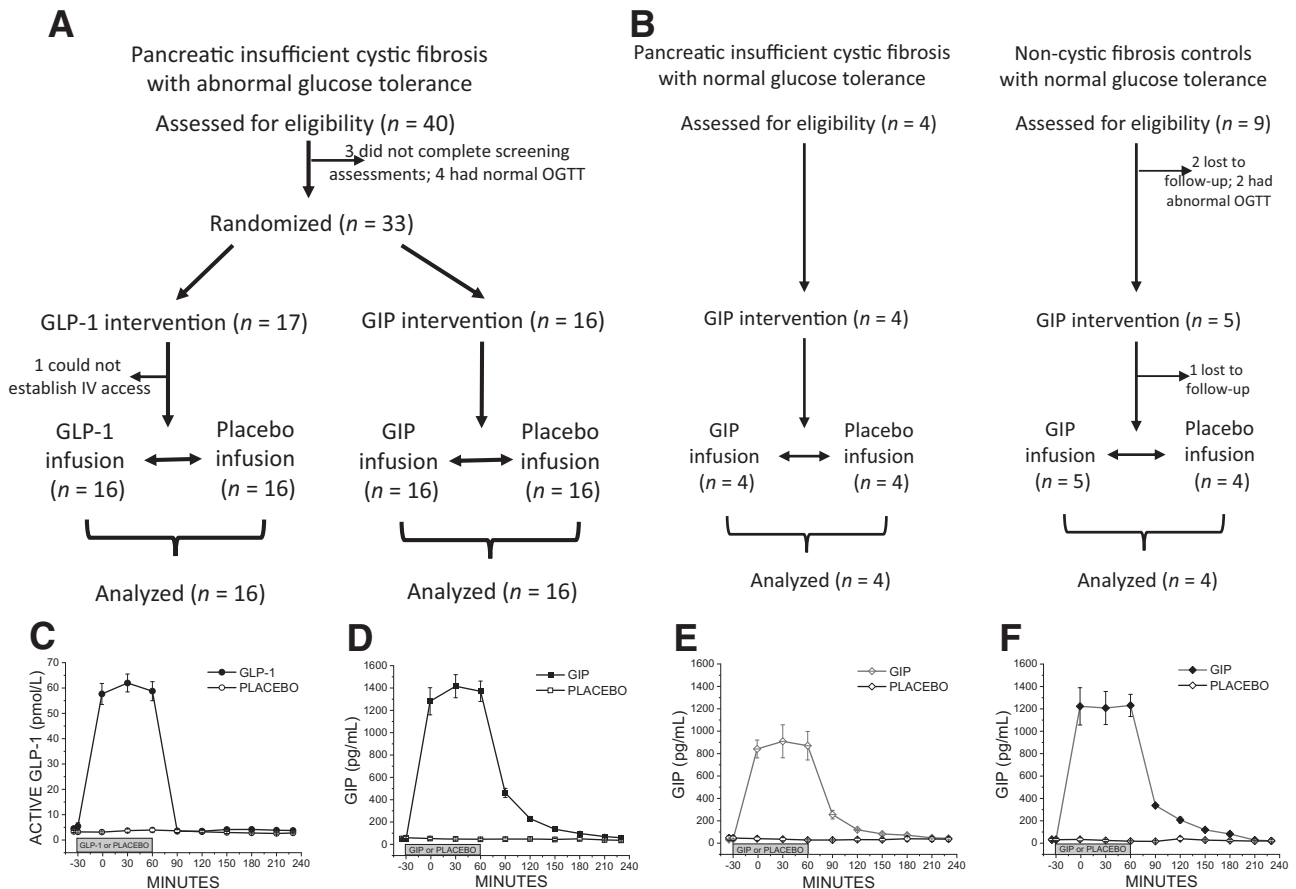
The study was approved by the institutional review boards of the University of Pennsylvania and the Children's Hospital of Philadelphia and conducted under an investigational new drug application with the U.S. Food and Drug Administration (IND 117381). All participants provided written informed consent to participate.

### Study Design

Eligible patients with PI-CF and AGT were randomly assigned to participate in either the GLP-1 or GIP group (Fig. 1A), with randomization stratified by glucose tolerance (early glucose intolerance, impaired glucose tolerance, or CFRD). All participants completed a mixed-meal tolerance test (16), as previously described (9), and, in a randomized, double-blind, cross-over fashion, underwent glucose-potentiated arginine (GPA) testing of islet  $\beta$ - and  $\alpha$ -cell function on two occasions with either incretin or placebo infused. Those with PI-CF and NGT and the matched control participants without CF underwent randomized, double-blind, cross-over investigation with GIP only (Fig. 1B).

### Incretin Administration

Lypophilized GLP-1 (7–36 amide) or GIP (1–42 amide; Bachem AG, Bubendorf, Switzerland) was reconstituted in 0.9% saline containing 0.25% human serum albumin as a 1  $\mu$ g/mL solution the evening before study. After a 12-h overnight fast, baseline blood samples were taken at 35 and 30 min before incretin administration (i.e.,  $t = -35$  min and  $t = -30$  min, respectively). Then, incretin or matching placebo infusion was initiated, with the alternate condition performed at a subsequent visit between 1 week and 1 month apart. GLP-1 was infused at a rate of 1.5 pmol/kg/min, with a double infusion rate for the first 10 min, from  $t = -30$  min until the completion of blood sampling at  $t = 60$  min (Fig. 1C). This rate of administration has been demonstrated to produce supraphysiologic concentrations of GLP-1 that augment insulin responses in individuals without CF but with type 2 diabetes (17–19). GIP was infused at a rate of 4 pmol/kg/min, with a double infusion rate for the first 10 min, from  $t = -30$  min until the completion of blood sampling at  $t = 60$  min (Fig. 1D–F). This rate of administration has been demonstrated to produce supraphysiologic concentrations of GIP that augment



**Figure 1**—Study design and participant flow. **A:** Eligible participants with PI-CF and AGT were randomized to receive either intervention with either GLP-1 or GIP and underwent GPA testing of islet function on two occasions with either incretin or placebo infused in a randomized, double-blind, cross-over fashion. **B:** Eligible participants with PI-CF and NGT and matched control participants without CF received intervention with GIP and underwent GPA testing with either GIP or placebo infused in a randomized, double-blind, cross-over fashion. Plasma levels of active GLP-1 during infusion of GLP-1 or placebo in participants with PI-CF and AGT (**C**), and plasma levels of GIP during infusion of GIP or placebo in participants with PI-CF and AGT (**D**), in participants with PI-CF and NGT (**E**), and in control participants without CF (**F**). Data are reported as mean  $\pm$  SE. IV, intravenous.

glucose-dependent insulin secretion in individuals without CF but with impaired glucose tolerance (13).

### GPA Test

The GPA test avoids enteric stimulation and so was used during infusion of GLP-1 or GIP and placebo to independently assess the effect of each incretin hormone on glucose-dependent islet  $\beta$ - and  $\alpha$ -cell function (20). Prestimulus blood samples were taken at 5 and 1 min before the injection of 5 g of 10% arginine over a 1-min period starting at  $t = 0$ . Additional blood samples were collected at 2, 3, 4, and 5 min after injection. Beginning at  $t = 10$  min, a hyperglycemic clamp technique (21) using a variable rate infusion of 20% glucose was performed to achieve a plasma glucose concentration of  $\sim 230$  mg/dL. Blood samples were taken every 5 min, centrifuged, and measured in duplicate at bedside with an automated glucose analyzer (YSI 2300; Yellow Springs Instruments, Yellow Springs, OH) to adjust the glucose infusion rate and achieve the desired plasma

glucose concentration. After 45 min of glucose infusion (at  $t = 55$  min), a 5-g arginine pulse was injected again with identical blood sampling. Subsequently, the infusion of incretin or placebo was stopped. Following a 2-h period without glucose infusion to allow plasma glucose levels to return to baseline, a hyperglycemic clamp was performed to achieve a plasma glucose concentration of  $\sim 340$  mg/dL. After 45 min of glucose infusion, a 5-g arginine pulse was injected again with identical blood sampling.

### Biochemical Analysis

Blood samples were collected into tubes on ice containing EDTA and a protease inhibitor cocktail, and for the mixed-meal tolerance test, DPP4 inhibitor (Sigma-Aldrich, St. Louis, MO). Samples were centrifuged at  $4^{\circ}\text{C}$ , separated, and frozen at  $-80^{\circ}\text{C}$  for subsequent analysis of insulin, C-peptide, glucagon, proinsulin, active GLP-1, total GIP, and free fatty acids, as previously described (9).

### Calculations

Second-phase glucose, insulin, and glucagon levels were assessed from the prestimulus levels between 40 and 45 min of the  $\sim 230$  mg/dL hyperglycemic clamp. Intravenous glucose tolerance was assessed from the glucose infusion rate (M) required during the  $\sim 230$  mg/dL hyperglycemic clamp. Acute insulin, C-peptide, proinsulin, and glucagon responses to arginine ( $AIR_{arg}$ ,  $ACR_{arg}$ ,  $APR_{arg}$ , and  $AGR_{arg}$ , respectively) were determined as the difference in mean of the 2-, 3-, 4-, and 5-min values and the mean of the prestimulus values (21). Glucose potentiation of arginine-induced insulin, C-peptide, and proinsulin (respectively,  $AIR_{pot}$ ,  $ACR_{pot}$ ,  $APR_{pot}$ ) release, and glucose-inhibition of arginine-induced glucagon ( $AGR_{inh}$ ) release were determined from the acute responses during the  $\sim 230$  mg/dL glucose clamp. Acute responses during the  $\sim 340$  mg/dL glucose clamp allowed for determination of the maximum arginine-induced insulin ( $AIR_{max}$ ), C-peptide, and proinsulin release, and of the minimum arginine-induced glucagon release (22). The proinsulin secretory ratio (PISR) in response to each injection to arginine was calculated as the molar ratio of the acute proinsulin and C-peptide response to arginine (9).

### Statistical Analysis

Comparisons were made using the nonparametric Wilcoxon signed rank test for paired data and the Mann-Whitney *U* test for independent samples. The primary outcome was second-phase insulin concentration during the 230 mg/dL hyperglycemic clamp. Mixed-effects models were used to test the relative influence of either GLP-1 or GIP versus placebo infusions on the primary and multiple secondary outcomes in PI-CF with AGT groups using time-by-condition, group-by-condition, and time-by-condition-by-group interactions (23). A similar approach was used to assess the relative effect of GIP versus placebo infusion for the group of patients with PI-CF and NGT and control group without CF (24). Analyses were performed using Stata, version 15 (StataCorp LP, College Station, TX). Data are presented as mean  $\pm$  SD or difference estimates from the mixed-effects models with 95% CIs. Significance was considered at  $P < 0.05$  (two-tailed).

### Data and Resource Availability

The datasets generated during this study are available from the corresponding authors upon reasonable request.

## RESULTS

### Participant Characteristics

A total of 33 patients with PI-CF and AGT were randomized with 17 enrolled in the GLP-1 group and 16 enrolled in the GIP group; 1 patient randomized to GLP-1 did not complete either GPA test because of insufficient intravenous access (Fig. 1A). The GLP-1 and GIP groups were comparable in sex, age, BMI,  $HbA_{1c}$ , pulmonary function, and glucose tolerance values (Table 1; Supplementary Fig. 1). Six patients randomized to the GLP-1 group were receiving CFTR

modulator therapy, five were receiving ivacaftor, and one was receiving lumacaftor and ivacaftor; one patient randomized to the GIP group was receiving lumacaftor and ivacaftor.

Four patients with PI-CF and NGT and five in the non-CF control group were subsequently enrolled for GIP intervention; one participant in the non-CF control group moved from the region after completing just one GPA test (Fig. 1B). The PI-CF and non-CF groups with NGT were comparable in sex, age, BMI,  $HbA_{1c}$ , and glucose tolerance values (Table 1). All four patients with PI-CF and NGT were receiving combination CFTR modulator therapy, two were receiving tezacaftor and ivacaftor, one was receiving lumacaftor and ivacaftor, and one was receiving elxacaftor, tezacaftor, and ivacaftor.

### Responses to GLP-1 and GIP in PI-CF With AGT

Active GLP-1 concentrations increased from  $5.4 \pm 1.3$  to  $62.0 \pm 3.5$  pmol/L during GLP-1 infusion and remained unchanged during placebo infusion (Fig. 1C). GIP concentrations increased from  $46.6 \pm 6.2$  to  $1,416.3 \pm 103.6$  pg/mL during GIP infusion and remained unchanged during placebo infusion (Fig. 1D).

Basal glucose concentrations decreased by more after 30 min of GLP-1 versus placebo infusion than after 30 min of GIP versus placebo infusion ( $-8.4$  [95% CI  $-4.7$  to  $-12.2$ ] mg/dL;  $P < 0.001$ ) (Fig. 2, A and B). During the  $\sim 230$  mg/dL hyperglycemic clamp, plasma glucose level was lower with GLP-1 versus placebo infusion ( $208 \pm 16$  vs.  $225 \pm 12$  mg/dL;  $P < 0.001$ ) despite M being greater with GLP-1 versus placebo infusion ( $11.4 \pm 2.1$  vs.  $9.0 \pm 1.5$  mg/kg/min;  $P < 0.001$ ), whereas the plasma glucose level was not different with GIP versus placebo infusion ( $219 \pm 13$  vs.  $225 \pm 9$  mg/dL), with no difference in M ( $9.1 \pm 1.5$  vs.  $8.8 \pm 1.4$  mg/kg/min). The increase in M during the  $\sim 230$  mg/dL hyperglycemic clamp with GLP-1 versus placebo treatment was greater than with GIP versus placebo ( $+2.2$  [95% CI  $1.1$ – $3.2$ ] mg/kg/min;  $P < 0.001$ ) (Fig. 2, A and B).

Basal insulin tended to increase more after 30 min of GLP-1 versus placebo infusion than after 30 min of GIP versus placebo infusion ( $+2.8$  [95% CI  $-0.08$  to  $5.7$ ]  $\mu$ U/mL;  $P = 0.057$ ) (Fig. 2, C and D). During the  $\sim 230$  mg/dL hyperglycemic clamp, the difference in second-phase insulin concentrations during GLP-1 versus placebo infusion was markedly greater than during GIP versus placebo infusion ( $+38.1$  [95% CI  $23.8$ – $52.4$ ]  $\mu$ U/mL;  $P < 0.001$ ) (Fig. 2, C and D), with parallel findings for second-phase C-peptide ( $+2.66$  [95% CI  $1.56$ – $3.76$ ] ng/mL;  $P < 0.001$ ). Similar results were obtained when excluding the seven participants ( $n = 6$  in the GLP-1 group and 1 in the GIP group) receiving CFTR modulator therapy.

Basal glucagon concentrations decreased after 30 min of GLP-1 versus placebo infusion and increased after 30 min of GIP versus placebo infusion, which differed between the GLP-1 and GIP groups ( $-9.6$  [95% CI  $-14.3$  to

**Table 1—Participant characteristics**

	PI-CF with AGT			
	GLP-1 group	GIP group	PI-CF group with NGT	Non-CF group with NGT
<i>n</i>	16	16	4	4
<b>Demographics</b>				
Male/female	8/8	7/9	2/2	2/2
Age (years)	27 (19–43)	23 (18–40)	24 (20–28)	28 (19–30)
BMI (kg/m <sup>2</sup> )	22 (19–34)	23 (19–32)	25 (18–27)	23 (21–27)
HbA <sub>1c</sub> (%)	5.8 (4.8–6.2)	5.6 (5.1–6.1)	5.5 (5.4–5.6)	5.2 (5.2–5.3)
HbA <sub>1c</sub> (mmol/mol)	40 (29–44)	38 (32–43)	37 (36–38)	33 (33–34)
FEV <sub>1</sub> (% predicted)	80.5 (48–122)	89 (32–112)	92 (35–109)	ND
FVC (% predicted)	90 (65–121)	90 (51–123)	93 (64–110)	ND
<b>OGTT profile</b>				
Fasting glucose (mg/dL)	93 (73–110)	91 (77–104)	89 (88–94)	88 (85–90)
1-h glucose (mg/dL)	220 (171–260)	213 (163–246)	138 (124–147)	139 (121–141)
2-h glucose (mg/dL)	154 (34–270)	144 (53–309)	89 (84–130)	91 (87–105)

Data are medians and ranges (minimum–maximum). FEV<sub>1</sub>, forced expiratory volume in 1 s; FVC, forced vital capacity; ND, not done.

–4.8] pg/mL;  $P < 0.001$ ) (Fig. 2, E and F). During the ~230 mg/dL hyperglycemic clamp, glucagon concentrations were similarly suppressed during incretin and placebo infusions in both the GLP-1 and GIP groups.

Changes in acute insulin, C-peptide, glucagon, and proinsulin responses with incretin versus placebo infusion were not different between the GLP-1 and GIP groups (Table 2; Supplementary Fig. 2; Fig. 3A–D). The PISR under the ~230 mg/dL hyperglycemic clamp condition was notably lower with GLP-1 versus placebo infusion when compared with GIP versus placebo intervention (–1.18% [95% CI –2.17 to –0.19%];  $P = 0.019$ ) (Table 2; Fig. 3, E and F). The GLP-1–induced change in second-phase insulin concentrations was related to the underlying  $\beta$ -cell secretory capacity (Supplementary Fig. 3), whether estimated by the AIR<sub>pot</sub> ( $r = 0.54$ ;  $P = 0.034$ ) or AIR<sub>max</sub> ( $r = 0.50$ ;  $P = 0.046$ ).

### Responses to GIP in PI-CF and Matched Controls With NGT

GIP concentrations increased similarly with GIP versus placebo infusion in the PI-CF and non-CF groups (+852.6  $\pm$  225.6 vs. +1,193.3  $\pm$  253.3 pg/mL, respectively) (Fig. 1, E and F).

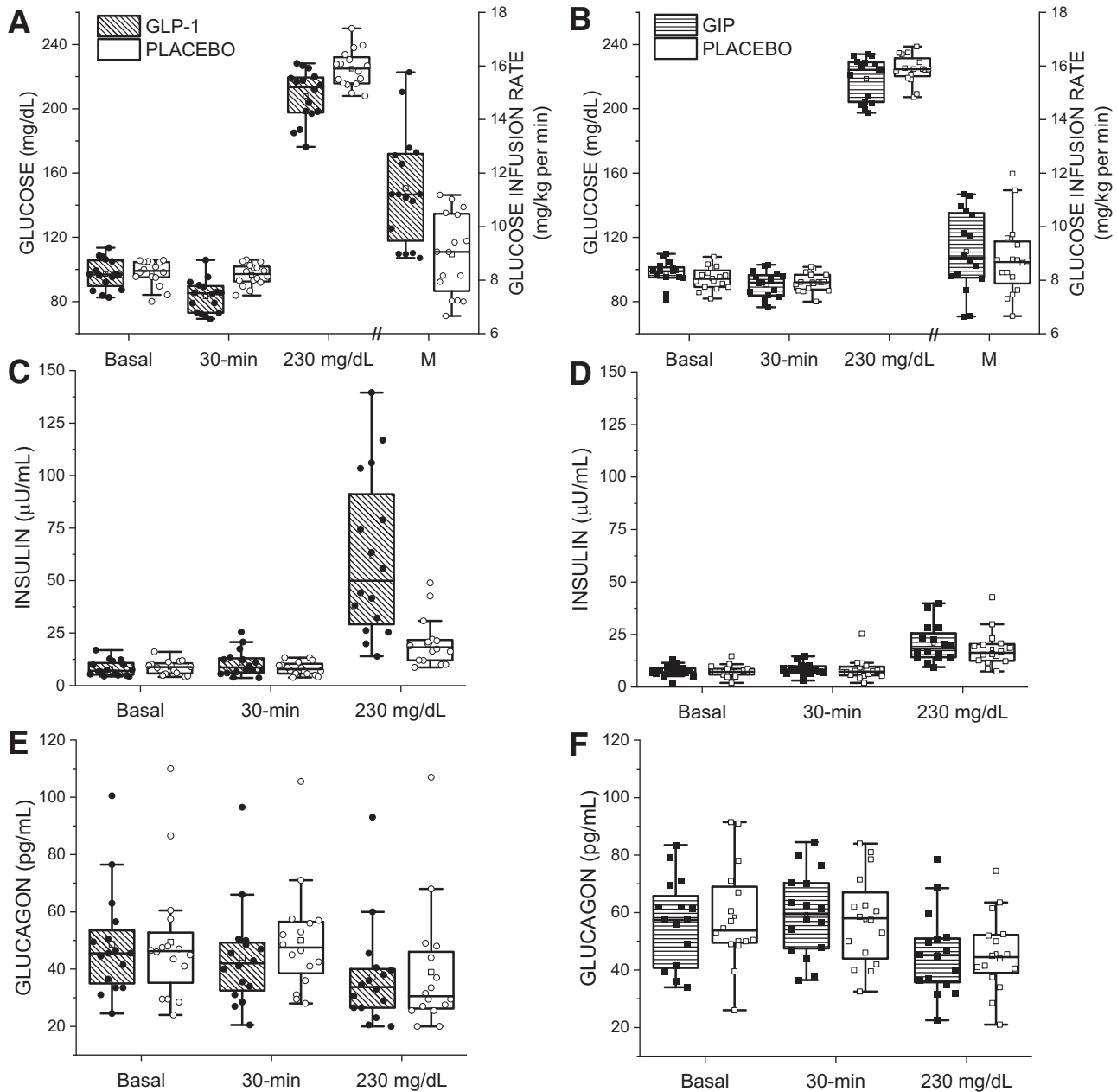
Basal glucose decreased by less after 30 min of GIP versus placebo infusion in the PI-CF group than in the non-CF group (+7.5 mg/dL [95% CI 1.9–13.2] mg/dL;  $P = 0.009$ ) (Fig. 4, A and B). During the ~230 mg/dL hyperglycemic clamp, plasma glucose concentrations were not different with GIP versus placebo infusion in patients with PI-CF (222  $\pm$  12 vs. 228  $\pm$  7 mg/dL, respectively) and those without CF (171  $\pm$  24 vs. 206  $\pm$  29 mg/dL, respectively). M was similar with GIP versus placebo infusion in the PI-CF group (9.7  $\pm$  1.7 vs. 9.7  $\pm$  1.4 mg/kg/min, respectively) (Fig. 4A) and was higher with GIP infusion than the placebo infusion in the non-CF group (respectively, 15.9  $\pm$  3.2 vs. 9.7  $\pm$  1.7 mg/kg/min and +6.19 [95% CI 7.6–11.9;

$P < 0.001$ ) (Fig. 4B). The absent difference in M in the PI-CF group compared with the increase in M in the non-CF group translated into an M that was greater with GIP relative to placebo infusion in participants without CF versus those with PI-CF (+6.2 mg/kg/min [95% CI 2.6–9.7];  $P = 0.001$ ).

Basal insulin level remained unchanged after 30 min of GIP versus placebo infusion in both PI-CF and non-CF groups. During the ~230 mg/dL hyperglycemic clamp, augmentation of second-phase insulin concentrations with GIP versus placebo infusion was markedly less in participants with PI-CF than in those without CF (–78.4  $\mu$ U/mL [95% CI –146.9 to –9.9];  $P = 0.025$ ) (Fig. 4, C and D), with similar results for second-phase C-peptide (–6.23 [95% CI –8.1 to –4.37] ng/mL;  $P < 0.001$ ).

The change in glucagon level after 30 min of GIP versus placebo was not different between the PI-CF and non-CF groups. During the ~230 mg/dL hyperglycemic clamp, glucagon concentrations were similarly suppressed during GIP and placebo infusions in both PI-CF and non-CF groups (Fig. 4, E and F).

Neither AIR<sub>arg</sub> nor ACR<sub>arg</sub> was different during GIP versus placebo in patients with PI-CF (Table 3; Supplementary Fig. 4A; Fig. 5A) and both were lower during GIP versus placebo infusion in the non-CF group ( $P \leq 0.02$  for both) (Table 3; Supplementary Fig. 4B; Fig. 5B), an effect explained by lower fasting glucose level and so a priming stimulus for arginine during GIP infusion in control participants. The change in AIR<sub>arg</sub> between GIP and placebo infusion was less in the PI-CF group than the non-CF group (–2.1  $\pm$  9.0 vs. –21.7  $\pm$  8.8  $\mu$ U/mL, respectively;  $P = 0.02$ ) with similar results for ACR<sub>arg</sub> (–0.24  $\pm$  0.74 vs. –1.61  $\pm$  0.78 ng/mL, respectively;  $P = 0.04$ ). Neither AIR<sub>pot</sub> nor ACR<sub>pot</sub> was different with GIP versus placebo infusion in either the PI-CF group or non-CF group (Table 3; Supplementary Fig. 4 A and B; Fig. 5, A and B). AGR<sub>arg</sub>



**Figure 2**—Glucose and islet hormone concentrations in response to incretin infusion. Plasma glucose (A and B), insulin (C and D), and glucagon (E and F) before and 30 min after infusion of incretin (lined box plots) or placebo (open box plots), and at the end of the ~230 mg/dL hyperglycemic clamp in participants with PI-CF and AGT in the GLP-1 (left) and GIP (right) groups. On the opposite y-axis (A and B), M represents the requisite glucose infusion rate during the hyperglycemic clamp. Box plots give the median and interquartile range.

was not different during GIP infusion than placebo infusion in the PI-CF group (Table 3; Supplementary Fig. 4C) and was greater during GIP than placebo infusion in the non-CF group ( $P = 0.006$ ) (Table 3; Supplementary Fig. 4D), an effect explained by the decrease in fasting glucose levels in control participants that is known to augment  $\alpha$ -cell function, particularly in the presence of GIP (25,26). The change in  $AGR_{arg}$  between GIP and placebo infusion was less in participants with PI-CF than those without -CF ( $+6.2 \pm 16.5$  vs.  $+32.3 \pm 9.4$  pg/mL, respectively;  $P = 0.03$ ).  $AGR_{inh}$  with GIP versus placebo infusion was

not different in either the PI-CF or non-CF groups (Table 3; Supplementary Fig. 4C and D). Neither the changes in acute proinsulin responses (Table 3; Fig. 5, C and D) nor in PISRs (Table 3; Fig. 5, E and F) were different between the PI-CF and non-CF groups.

## DISCUSSION

These results advance our understanding of the individual contributions of GLP-1 and GIP to incretin action in PI-CF. Individuals with PI-CF with AGT who received GLP-1 exhibited a marked augmentation in glucose-dependent

**Table 2—Acute islet cell hormone responses during glucose-potentiated arginine testing in PI-CF with AGT**

	GLP-1 group (n = 16)			GIP group (n = 16)		
	Incretin	Placebo	P value	Incretin	Placebo	P value
<b>AIR, <math>\mu</math>U/mL</b>						
AIR <sub>arg</sub>	11.6 (7.6–15.6)	14.5 (9.2–23.1)	0.004	8.6 (6.9–12.0)	14.3 (11.1–18.1)	0.01
AIR <sub>pot</sub>	44.7 (23.8–60.2)	43.4 (23.8–54.8)	0.61	26.0 (18.4–46.7)	32.1 (24.8–55.9)	0.001
AIR <sub>max</sub>	49.3 (21.5–61.3)	48.6 (30.9–64.4)	0.61	38.7 (23.7–78.3)	41.3 (32.0–60.9)	0.02
<b>AGR, pg/mL</b>						
AGR <sub>arg</sub>	29.0 (20.9–38.6)	31.3 (18.9–46.9)	0.74	40.0 (24.5–57.3)	29.0 (20.8–47.6)	0.21
AGR <sub>inh</sub>	18.5 (9.4–30.6)	27.3 (16.3–35.1)	0.07	25.3 (15.8–43.3)	27.5 (18.0–42.9)	0.57
AGR <sub>min</sub>	18.9 (12.0–26.4)	26.1 (12.8–33.9)	0.21	22.4 (16.4–28.8)	28.4 (15.5–39.8)	0.49
<b>ACR, ng/mL</b>						
ACR <sub>arg</sub>	0.49 (0.36–0.68)	0.61 (0.46–0.90)	0.002	0.40 (0.33–0.64)	0.69 (0.61–0.80)	<0.001
ACR <sub>pot</sub>	2.04 (1.30–2.85)	2.04 (1.19–2.74)	0.57	1.69 (0.99–2.15)	1.62 (1.37–2.13)	0.09
ACR <sub>max</sub>	1.90 (0.96–2.57)	2.07 (1.32–2.64)	0.06	1.85 (1.23–2.99)	2.16 (1.60–2.58)	0.07
<b>APR, pmol/L</b>						
APR <sub>arg</sub>	3.5 (1.3–5.0)	3.5 (2.2–6.0)	0.20	2.1 (1.1–2.9)	3.4 (1.7–4.6)	0.04
APR <sub>pot</sub>	8.5 (5.5–11.8)	12.1 (6.1–14.6)	0.14	11.7 (7.4–14.3)	11.2 (6.7–14.6)	0.62
APR <sub>max</sub>	10.8 (7.6–13.5)	11.5 (7.3–18.2)	0.44	11.5 (7.4–17.0)	11.9 (9.3–15.4)	0.53
<b>PISR, %</b>						
PISR <sub>arg</sub>	2.06 (0.91–2.68)	1.68 (1.07–2.22)	0.61	1.37 (0.77–2.15)	1.56 (0.79–1.98)	0.80
PISR <sub>pot</sub>	1.12 (0.62–2.61)	1.54 (1.02–2.25)	0.23	2.32 (1.94–3.04)	1.96 (1.57–2.43)	0.03
PISR <sub>max</sub>	1.70 (1.12–2.10)	1.57 (1.07–2.40)	0.57	1.88 (1.23–2.04)	1.91 (1.52–2.32)	1.00

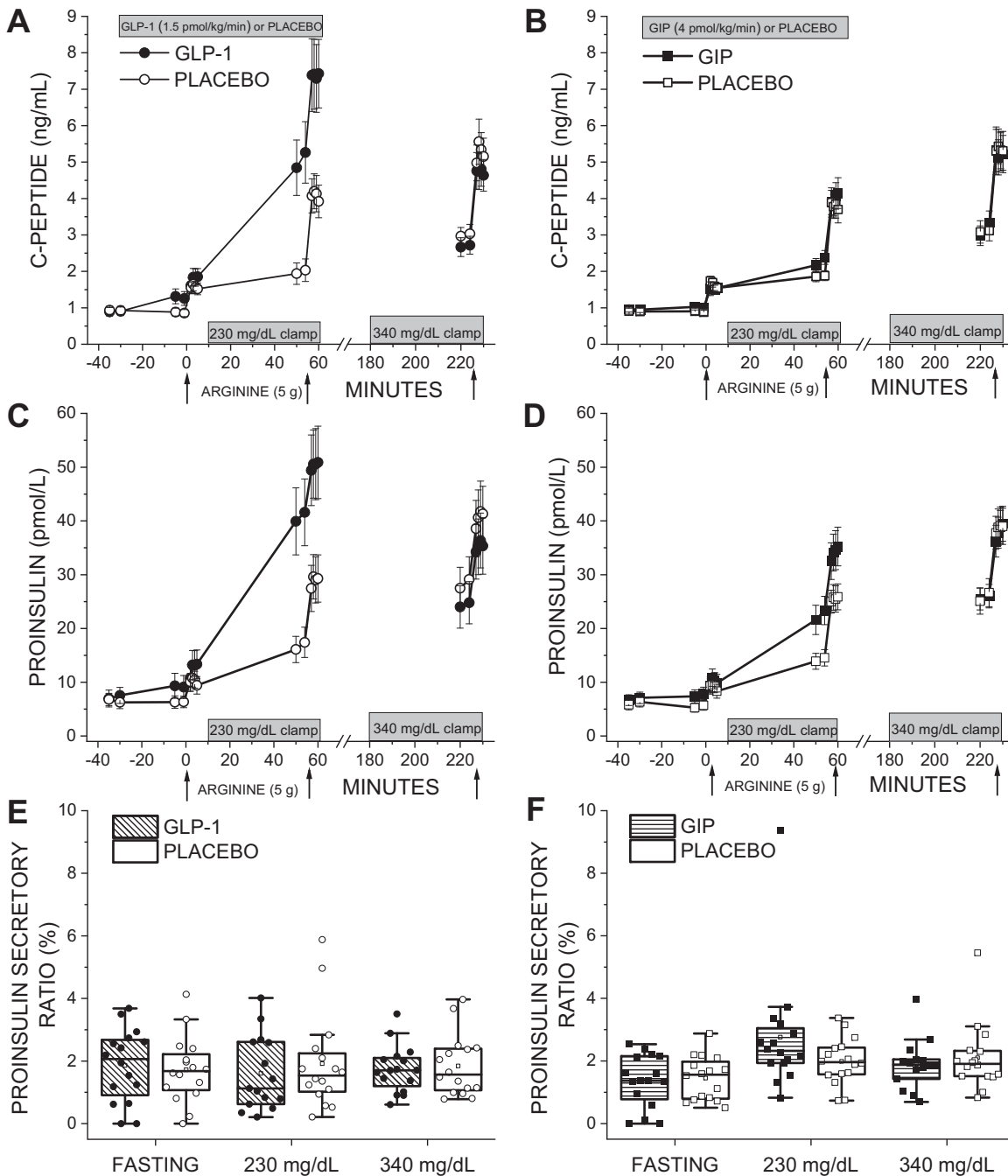
Data are medians and interquartile ranges. Changes in acute islet cell hormone responses with incretin versus placebo infusion were not different between the GLP-1 and GIP groups; the change in PISR<sub>pot</sub> with incretin versus placebo was different between the GLP-1 and GIP groups ( $P = 0.03$ ). AIR, acute insulin response; AGR, acute glucagon response; ACR, acute C-peptide response; APR, acute proinsulin response; PISR, proinsulin secretory ratio; arg, arginine; pot, glucose-potentiated arginine; inh, glucose-inhibited arginine; max, maximum arginine; min, minimum arginine.

insulin secretion evident by increased second-phase insulin and C-peptide concentrations as well as intravenous glucose tolerance. There was no effect of GLP-1 on measures of maximal  $\beta$ -cell secretory capacity, indicating preservation of the reserve capacity for insulin secretion. In contrast, individuals with PI-CF with AGT who received GIP demonstrated no increase in second-phase insulin or C-peptide concentrations. Moreover, the differential responsiveness to GLP-1 and GIP in PI-CF with AGT does not appear to be the result of dysregulated glucose metabolism, because individuals with PI-CF with NGT also exhibited impaired second-phase insulin and C-peptide responses during GIP infusion. The attenuated insulinotropic action of GIP suggests loss of a key component of the incretin effect could contribute to diabetes development in CF.

The effect of GLP-1 to augment second-phase insulin secretion in PI-CF is like that reported in individuals with type 2 diabetes (17,27). Patients with type 2 diabetes have decreased  $\beta$ -cell sensitivity to GLP-1 compared with individuals without diabetes (19), but the former retain their response to supraphysiologic concentrations of GLP-1 and to pharmacologic agonists of the GLP-1 receptor. Inhibitors of dipeptidyl peptidase-4 (DPP-4) prevent inactivation of endogenous GLP-1 (and GIP) and can improve pancreatic islet function in type 2 diabetes. In individuals with PI-CF and AGT, our group has shown that 6 months' treatment with the DPP-4 inhibitor sitagliptin improved the rapidity

and magnitude of postprandial insulin secretion and led to greater suppression of glucagon concentrations (28). However, these islet effects did not translate into an improvement in postprandial glucose tolerance with sitagliptin in PI-CF (28), a benefit of DPP-4 inhibition reported in most studies of patients with type 2 diabetes (29,30). The hyperglucagonemia that characterizes type 2 diabetes is not present in PI-CF, which features reduced islet  $\alpha$ -cell as well as  $\beta$ -cell secretory capacity (9). Thus, more potent stimulation of insulin secretion rather than suppression of glucagon may be necessary to improve glucose tolerance in PI-CF. The results of this study support that the improved glucose-dependent regulation of islet function observed with the DPP-4 inhibitor sitagliptin in PI-CF (28) can be attributed to the increased levels of intact GLP-1, rather than GIP, and that use of GLP-1 agonists to further enhance GLP-1 effects may lead to enhanced insulin secretion and glucose tolerance.

Basal glucagon secretion in individuals with PI-CF and AGT was inhibited during GLP-1 infusion and stimulated during GIP infusion—the expected effects for each incretin hormone on pancreatic  $\alpha$ -cell function. GLP-1 likely inhibits glucagon secretion indirectly through the paracrine effects of insulin and somatostatin; in contrast, GIP appears to directly stimulate glucagon secretion through GIP receptors expressed on  $\alpha$ -cells (7,25,26). However, AGRs, which are lower in individuals with PI-CF than in



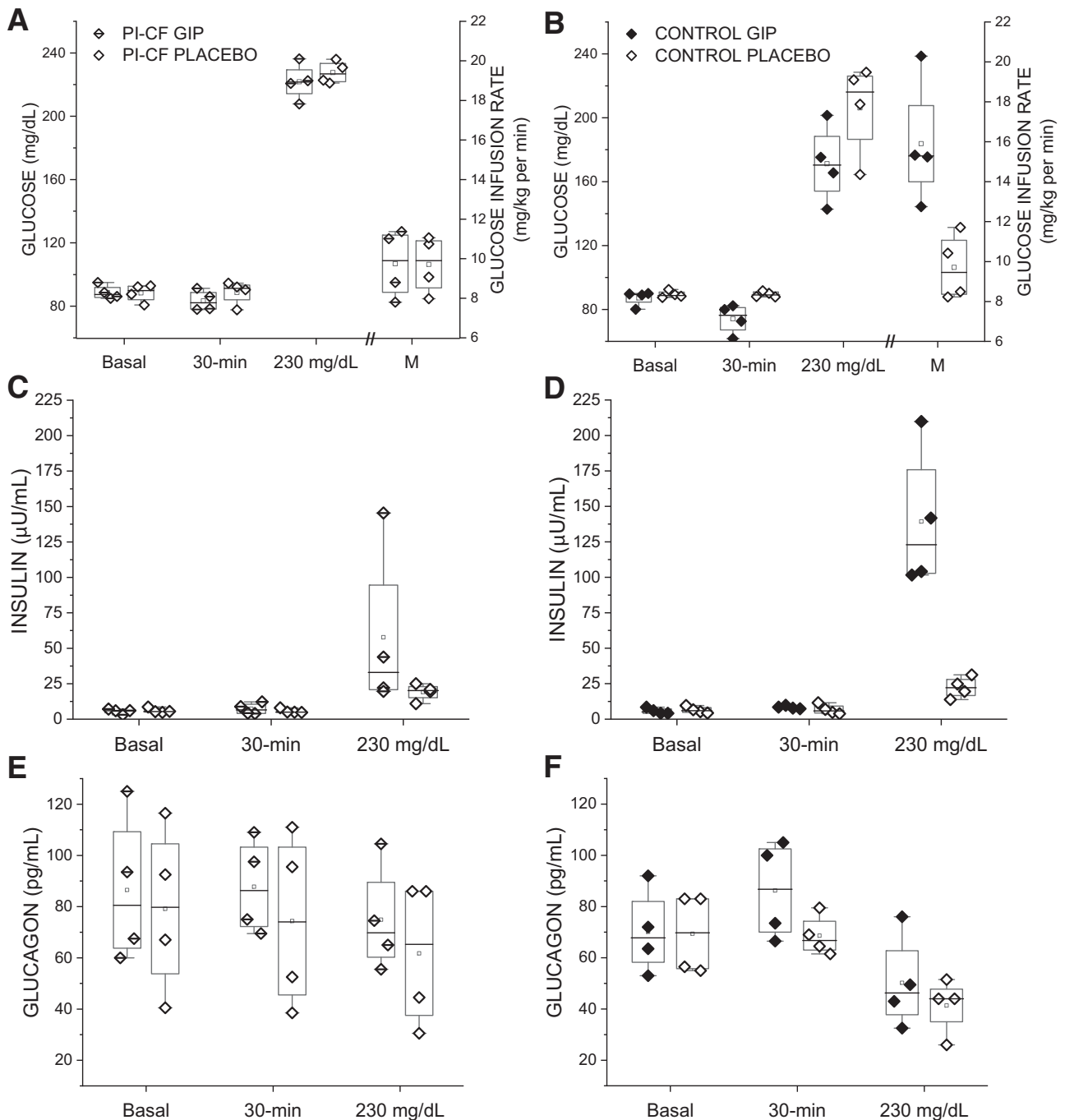
**Figure 3**—C-peptide, proinsulin, and proinsulin secretory ratios in response to GPA testing. Islet  $\beta$ -cell release of processed C-peptide (A and B), unprocessed proinsulin (C and D), and PISRs (E and F) of the acute proinsulin and C-peptide responses to arginine under fasting and  $\sim$ 230 mg/dL hyperglycemic clamp conditions during incretin or placebo infusion, and again under  $\sim$ 340 mg/dL hyperglycemic clamp conditions without incretin or placebo infusion in participants with PI-CF and AGT in the GLP-1 (left) and GIP (right) groups. Data are reported as mean  $\pm$  SE or in box plots giving the median and interquartile range.

those without CF (9), were not increased during GIP infusion, as was observed for  $AGR_{arg}$  in our non-CF control group. Thus, individuals with PI-CF may exhibit impairment of both islet  $\beta$ - and  $\alpha$ -cell responsiveness to GIP.

In type 2 diabetes, the insulinotropic effect of GIP is markedly impaired with loss of GIP-induced augmentation of second-phase insulin secretion (10,11,31,32).

Both GLP-1 and GIP signal through specific G-protein coupled receptors that lead to stimulation of adenylate cyclase and activation of protein kinase A and appear to potentiate insulin secretion using the same downstream intracellular machinery (33). Work in Zucker diabetic rats suggested that hyperglycemia leads to decreased islet  $\beta$ -cell GIP receptor expression and function as a mechanism for





**Figure 4**—Glucose and islet hormone levels in response to GIP infusion in NGT patients with PI-CF and control participants without CF. Plasma glucose (A and B), insulin (C and D), and glucagon (E and F) levels before and 30 min after infusion of GIP (marked/filled diamonds) or placebo (open diamonds), and at the end of the ~230 mg/dL hyperglycemic clamp in participants with PI-CF and NGT (left) and in control participants without CF (right). On the opposite y-axis (A and B), M represents the requisite glucose infusion rate during the hyperglycemic clamp. Box plots give the median and interquartile range.

loss of GIP augmentation of glucose-dependent insulin secretion (12). Moreover, 4 weeks of near normalization of glycemia in type 2 diabetes modestly improved second-phase insulin and C-peptide levels during GIP infusion (34), suggesting that this effect of hyperglycemia is reversible.

In contrast, our study in PI-CF demonstrates impaired GIP action to augment insulin secretion even in individuals with NGT. This impaired GIP action in PI-CF is unlikely a consequence of pancreatic exocrine disease, because a previous study in individuals with chronic pancreatitis and exocrine pancreatic insufficiency demonstrated intact augmentation

**Table 3—Acute islet-cell hormone responses during glucose-potentiated arginine testing in patients with PI-CF with NGT and in control participants**

	PI-CF group (n = 4)			Non-CF control group (n = 4)		
	GIP	Placebo	P value	GIP	Placebo	P value
AIR, $\mu$ U/mL						
AIR <sub>arg</sub>	14.2 (13.1–15.7)	15.3 (8.9–24.0)	0.68	17.5 (12.3–21.5)	35.7 (33.1–44.1)	0.02
AIR <sub>pot</sub>	82.1 (37.9–223.4)	38.3 (23.6–66.4)	0.29	143.0 (113.0–191.2)	97.7 (80.2–249.0)	0.82
AGR, pg/mL						
AGR <sub>arg</sub>	39.4 (28.0–54.0)	33.8 (16.8–52.9)	0.51	69.9 (45.4–121)	44.0 (8.1–93.6)	0.006
AGR <sub>inh</sub>	28.0 (19.9–46.9)	29.3 (8.5–49.8)	0.40	30.5 (14.1–53.0)	36.1 (18.0–53.4)	0.80
ACR, ng/mL						
ACR <sub>arg</sub>	0.95 (0.84–1.11)	0.95 (0.64–1.78)	0.56	0.79 (0.46–1.37)	2.25 (2.17–2.87)	0.03
ACR <sub>pot</sub>	3.34 (2.49–5.53)	1.97 (1.83–3.90)	0.05	4.48 (4.14–6.74)	5.03 (4.74–9.63)	0.24
APR, pmol/L						
APR <sub>arg</sub>	2.9 (2.3–3.6)	2.9 (1.6–4.6)	0.84	3.1 (2.3–4.8)	5.9 (2.9–9.8)	0.34
APR <sub>pot</sub>	14.7 (11.8–19.0)	9.7 (7.7–13.9)	0.02	21.0 (13.5–45.2)	17.5 (10.0–29.3)	0.50
PISR, %						
PISR <sub>arg</sub>	0.90 (0.72–1.09)	0.75 (0.70–0.89)	0.32	1.15 (1.02–1.49)	0.60 (0.39–1.11)	0.05
PISR <sub>pot</sub>	1.22 (1.07–1.44)	1.26 (1.02–1.49)	0.94	1.08 (0.66–3.17)	0.78 (0.61–1.12)	0.31

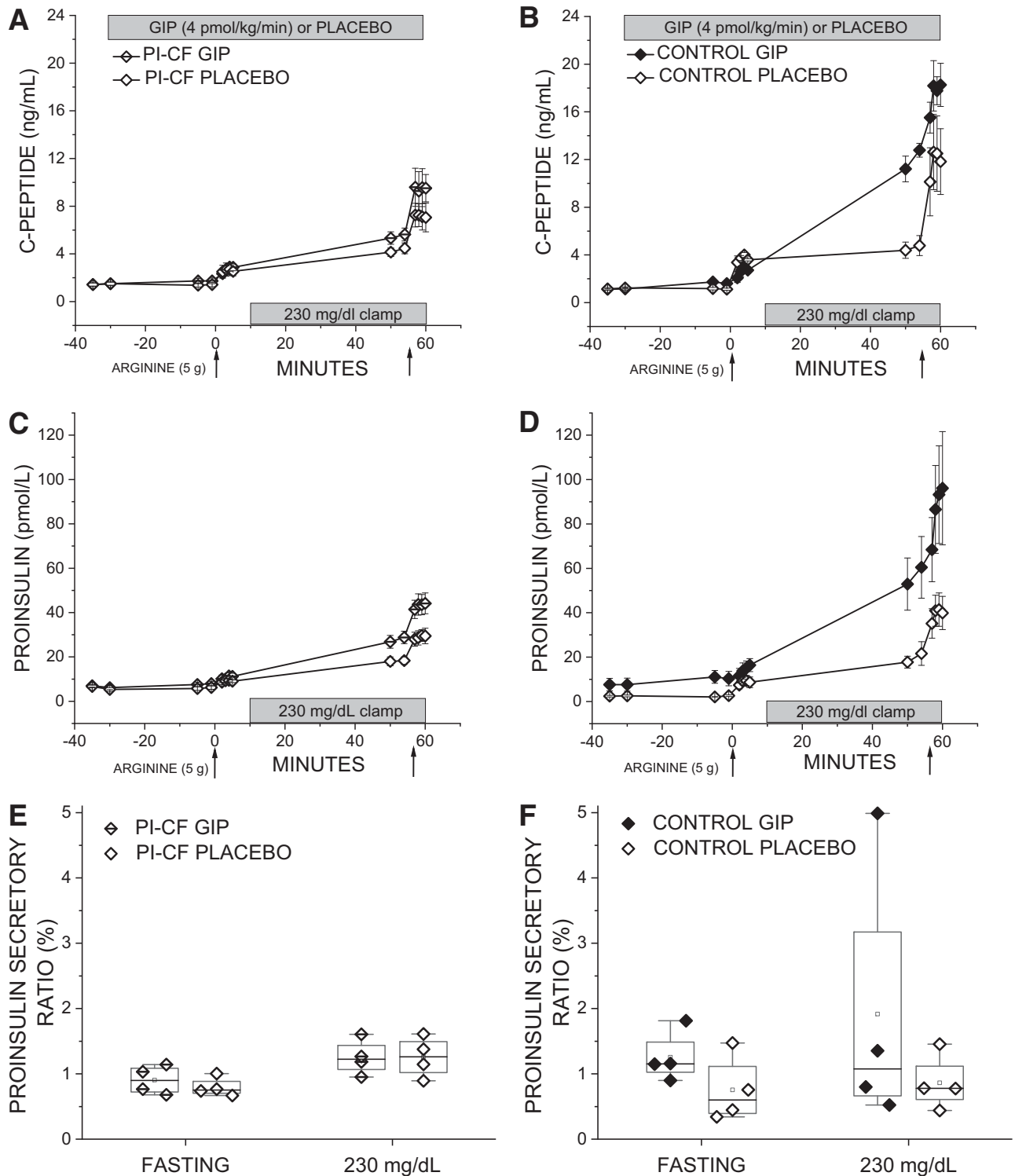
Data are reported as medians and interquartile ranges. AIR, acute insulin response; AGR, acute glucagon response; ACR, acute C-peptide response; APR, acute proinsulin response; PISR, proinsulin secretory ratio; arg, arginine; pot, glucose-potentiated arginine; inh, glucose-inhibited arginine.

of second-phase insulin and C-peptide responses during infusion of GIP in those with normal to impaired glucose tolerance (35). CFTR function has been proposed to be important for islet  $\beta$ -cell, and possibly  $\alpha$ -cell, function (14), although a direct role of CFTR in insulin secretion via expression in a subpopulation of  $\beta$ -cells or an indirect role via expression in pancreatic ductal cells neighboring the islet (36,37) is debated. Nevertheless, loss of CFTR function appears to affect the amplification pathway for insulin secretion (38), with our study providing *in vivo* evidence that loss of CFTR function may affect nutrient-stimulated insulin secretion at least in part through impaired GIP action.

Both reduced  $\beta$ -cell secretory capacity and hyperglycemia can lead to disproportionately increased proinsulin secretion (39,40) with increased demand on a compromised functional  $\beta$ -cell mass for insulin secretion resulting in  $\beta$ -cell recruitment of immature secretory granules containing an abundance of incompletely processed proinsulin (41,42). Loss of CFTR function may impair proinsulin processing through effects on chloride ion flux important for insulin granule acidification and activation of the prohormone convertase enzymes that generate insulin and C-peptide (43). We have previously demonstrated that individuals with PI-CF have elevated proinsulin secretory ratios compared with individuals with pancreatic-sufficient CF and non-CF control individuals (9), and that the disproportionate increase in proinsulin secretion is related to the extent of impaired glucose tolerance (3). Unlike a previous study of GLP-1 infusion in which proinsulin secretory ratios increased under conditions of glucose-potentiated arginine stimulation (20), GLP-1 augmented second-phase insulin secretion without disproportionately increasing proinsulin release in this present study of PI-CF.

Importantly, both studies demonstrate a relationship between the GLP-1-induced increase in second-phase insulin concentrations and the underlying  $\beta$ -cell secretory capacity. Interestingly, in participants with PI-CF and AGT (but not those with NGT), infusion of GIP led to disproportionately increased proinsulin secretion such that GLP-1 induced an improvement relative to worsening proinsulin secretory ratio with GIP. These results further suggest convergence of incretin signaling pathways and CFTR conductance on insulin processing and secretion.

This study is limited by the exclusion of children, because our investigational new drug application required study in adults aged  $\geq 18$  years. Thus, whether the  $\beta$ -cell response to GIP may be preserved earlier in PI-CF, particularly prior to significant reduction in  $\beta$ -cell secretory capacity, remains uncertain. Additionally, because progressive  $\beta$ -cell dysfunction is so common in PI-CF, identifying adults with PI-CF and NGT according to our strict criteria of 1-h OGTT glucose  $< 155$  mg/dL was challenging, resulting in a small sample size for this cohort. Additionally, the four individuals with PI-CF and NGT were all receiving CFTR modulator therapy. Although CFTR modulator therapy with lumacaftor and ivacaftor has not been associated with improved insulin secretion or glucose tolerance in F508del homozygous individuals (44), and none of our participants had a class III mutation associated with improved insulin secretion after initiation of ivacaftor (45), we cannot exclude that partial correction of CFTR function may have been present in these individuals. In fact, one F508del homozygous individual with PI-CF and NGT receiving tezacaftor and ivacaftor exhibited a GIP-induced increase in second-phase insulin levels. Our study did not include



**Figure 5**—C-peptide, proinsulin, and proinsulin secretory ratios in response to GPA testing with GIP or placebo infusion in patients with PI-CF and control participants without CF. Islet  $\beta$ -cell release of processed C-peptide (A and B), unprocessed proinsulin (C and D), and PISRs (E and F) of the acute proinsulin and C-peptide responses to arginine under fasting and  $\sim$ 230 mg/dL hyperglycemic clamp conditions during GIP or placebo infusion in participants with PI-CF and NGT (left) and in control participants without CF (right). Data are reported as mean  $\pm$  SE or box plots giving the median and interquartile range.

individuals with pancreatic-sufficient CF who retain partial CFTR function and should be considered for inclusion as control participants in future studies needed to determine

whether correction of CFTR function with highly effective CFTR channel modulation may restore more favorable GIP action on  $\beta$ -cell secretion.

In conclusion, the incretin hormone GLP-1 improves glucose-dependent  $\beta$ -cell insulin secretion in PI-CF without depleting the availability of mature  $\beta$ -cell secretory granules, whereas islet responsiveness to GIP is impaired independently of hyperglycemia in PI-CF. Although there is concern for the potential of GLP-1 receptor agonists to exacerbate underlying gastroparesis and dysmotility in CF, tolerability of low-dose, chronic administration has been reported in at least one individual (46). Future studies should determine whether peptide and/or nonpeptidic GLP-1 receptor agonists (47) may both be tolerated and preserve or even restore islet  $\beta$ -cell function long term in PI-CF to delay progression of AGT and/or treat CFRD.

**Acknowledgments.** The authors thank members of the Data and Safety Monitoring Board: Dr. Marion Vetter, (chair) at Janssen Pharmaceuticals; Drs. Serena Cardillo and Daniel Dorgan, both members of the Cystic Fibrosis Program at the Hospital of the University of Pennsylvania; and the study monitor, Theresa Scattergood, at the University of Pennsylvania Perelman School of Medicine, for providing oversight of the study conduct and adverse events. We are indebted to the patients with CF for their participation; to Christina Kubrak of the Children's Hospital of Philadelphia (CHOP) Cystic Fibrosis Center for assistance with patient recruitment; to the nursing and dietary staff of the University of Pennsylvania Center for Human Phenomic Science for their patient care and technical assistance; to the pharmacy staff of the University of Pennsylvania Investigation Drug Service for preparation of GLP-1 and GIP for infusion; to Dr. Steven Seeholzer of the CHOP Research Institute Protein and Proteomics Core for providing analyses of the GLP-1 and GIP peptides; to Dr. Heather Collins of the University of Pennsylvania Diabetes Research Center for performance of the radioimmunoassays; to Dr. Xiangdong Ren of the CHOP's Translational Core Laboratory for performance of the ELISAs; to Huong-Lan Nguyen and Paola Alvarado of the Human Metabolism Resource of the University of Pennsylvania Institute for Diabetes, Obesity and Metabolism for laboratory and regulatory assistance; and to Philip Cross of Philip J. Cross & Associates for providing regulatory support.

**Funding.** This study was supported by Public Health Service research grants R01 DK97830 (to A.K. and M.R.R.), K23 DK107937 (to S.S.), UL1 TR001878 (to University of Pennsylvania Center for Human Phenomic Science), P30 DK19525 (to University of Pennsylvania Diabetes Research Center), and T32 DK007314 (to University of Pennsylvania Training Grant in Diabetes, Endocrine and Metabolic Diseases) from the National Institutes of Health, Cystic Fibrosis Foundation grant RICKEL19A0-I (to M.R.R. and A.K.), and the Human Metabolism Resource of the University of Pennsylvania Institute for Diabetes, Obesity & Metabolism.

**Duality of Interest.** No potential conflicts of interest relevant to this article were reported.

**Author Contributions.** S.C.N. conducted experiments, acquired and analyzed data, and wrote the manuscript; A.J.P., J.N.E., and K.G. conducted experiments, acquired data, and reviewed and edited the manuscript; A.D., A.T., and A.J.F. acquired and analyzed data, and reviewed and edited the manuscript; D.D.D. and D.H. contributed to the study design and study oversight, and reviewed and edited the manuscript; S.S., D.S., and R.G. analyzed data, and reviewed and edited the manuscript; D.A.D. contributed to the study design, provided reagents, and reviewed and edited the manuscript; R.C.R. contributed to the study design and study oversight, analyzed data, and reviewed and edited the manuscript; A.K. designed the study, provided study oversight, analyzed data, and reviewed and edited the manuscript; M.R.R. designed the study, conducted experiments, acquired and analyzed data, and wrote the manuscript. A.K. and M.R.R. are the guarantors of this work, and as such, had full access to all the data in the study and take responsibility for the integrity of the data and accuracy of the data analysis.

**Prior Presentation.** Preliminary results were presented in part at the American Diabetes Association 78th Scientific Sessions, Orlando, FL, 22–26 June 2018; and at the 33rd Annual North American Cystic Fibrosis Conference, Nashville, TN, 31 October–2 November 2019.

## References

- Moran A, Dunitz J, Nathan B, Saeed A, Holme B, Thomas W. Cystic fibrosis-related diabetes: current trends in prevalence, incidence, and mortality. *Diabetes Care* 2009;32:1626–1631
- Rickels MR, Norris AW, Hull RL. A tale of two pancreases: exocrine pathology and endocrine dysfunction. *Diabetologia* 2020;63:2030–2039
- Nyirjesy SC, Sheikh S, Hadjiliadis D, et al.  $\beta$ -Cell secretory defects are present in pancreatic insufficient cystic fibrosis with 1-hour oral glucose tolerance test glucose  $\geq 155$  mg/dL. *Pediatr Diabetes* 2018;19:1173–1182
- Moran A, Becker D, Casella SJ, et al.; CFRD Consensus Conference Committee. Epidemiology, pathophysiology, and prognostic implications of cystic fibrosis-related diabetes: a technical review. *Diabetes Care* 2010;33:2677–2683
- Knop FK, Vilsbøll T, Larsen S, et al. Increased postprandial responses of GLP-1 and GIP in patients with chronic pancreatitis and steatorrhea following pancreatic enzyme substitution. *Am J Physiol Endocrinol Metab* 2007;292:E324–E330
- Perano SJ, Couper JJ, Horowitz M, et al. Pancreatic enzyme supplementation improves the incretin hormone response and attenuates postprandial glycemia in adolescents with cystic fibrosis: a randomized crossover trial. *J Clin Endocrinol Metab* 2014;99:2486–2493
- Holst JJ, Gromada J. Role of incretin hormones in the regulation of insulin secretion in diabetic and nondiabetic humans. *Am J Physiol Endocrinol Metab* 2004;287:E199–E206
- Kuo P, Stevens JE, Russo A, et al. Gastric emptying, incretin hormone secretion, and postprandial glycemia in cystic fibrosis—effects of pancreatic enzyme supplementation. *J Clin Endocrinol Metab* 2011;96:E851–E855
- Sheikh S, Gudipaty L, De Leon DD, et al. Reduced  $\beta$ -cell secretory capacity in pancreatic-insufficient, but not pancreatic-sufficient, cystic fibrosis despite normal glucose tolerance. *Diabetes* 2017;66:134–144
- Nauck MA, Heimesaat MM, Orskov C, Holst JJ, Ebert R, Creutzfeldt W. Preserved incretin activity of glucagon-like peptide-1 [7-36 amide] but not of synthetic human gastric-inhibitory polypeptide in patients with type-2 diabetes-mellitus. *J Clin Invest* 1993;91:301–307
- Elahi D, McAloon-Dyke M, Fukagawa NK, et al. The insulinotropic actions of glucose-dependent insulinotropic polypeptide (GIP) and glucagon-like peptide-1 (7-37) in normal and diabetic subjects. *Regul Pept* 1994;51:63–74
- Piteau S, Olver A, Kim SJ, et al. Reversal of islet GIP receptor down-regulation and resistance to GIP by reducing hyperglycemia in the Zucker rat. *Biochem Biophys Res Commun* 2007;362:1007–1012
- Wice BM, Reeds DN, Tran HD, et al. Xenin-25 amplifies GIP-mediated insulin secretion in humans with normal and impaired glucose tolerance but not type 2 diabetes. *Diabetes* 2012;61:1793–1800
- Westholm E, Wendt A, Eliasson L. Islet function in the pathogenesis of cystic fibrosis-related diabetes mellitus. *Clin Med Insights Endocrinol Diabetes* 2021;14. DOI: 11795514211031204
- Farrell PM, Rosenstein BJ, White TB, et al.; Cystic Fibrosis Foundation. Guidelines for diagnosis of cystic fibrosis in newborns through older adults: Cystic Fibrosis Foundation consensus report. *J Pediatr* 2008;153:S4–S14
- Vollmer K, Holst JJ, Baller B, et al. Predictors of incretin concentrations in subjects with normal, impaired, and diabetic glucose tolerance. *Diabetes* 2008;57:678–687
- Ahrén B, Larsson H, Holst JJ. Effects of glucagon-like peptide-1 on islet function and insulin sensitivity in noninsulin-dependent diabetes mellitus. *J Clin Endocrinol Metab* 1997;82:473–478
- Rachman J, Barrow BA, Levy JC, Turner RC. Near-normalisation of diurnal glucose concentrations by continuous administration of glucagon-like peptide-1 (GLP-1) in subjects with NIDDM. *Diabetologia* 1997;40:205–211

19. Kjems LL, Holst JJ, Vølund A, Madsbad S. The influence of GLP-1 on glucose-stimulated insulin secretion: effects on beta-cell sensitivity in type 2 and nondiabetic subjects. *Diabetes* 2003;52:380–386
20. Rickels MR, Mueller R, Markman JF, Naji A. Effect of glucagon-like peptide-1 on beta- and alpha-cell function in isolated islet and whole pancreas transplant recipients. *J Clin Endocrinol Metab* 2009;94:181–189
21. Ward WK, Halter JB, Beard JC, Porte D Jr. Adaptation of B and A cell function during prolonged glucose infusion in human subjects. *Am J Physiol* 1984;246:E405–E411
22. Seaquist ER, Robertson RP. Effects of hemipancreatectomy on pancreatic alpha and beta cell function in healthy human donors. *J Clin Invest* 1992;89:1761–1766
23. Shih W. Sample size and power calculation for periodontal and other studies with clustered samples using the method of generalized estimating equations. *Biom J* 1997;39:899–908
24. Hedeker D, Gibbons R. *Longitudinal Data Analysis*. Hoboken, NJ, John Wiley & Sons, Inc., 2006
25. Meier JJ, Gallwitz B, Siepmann N, et al. Gastric inhibitory polypeptide (GIP) dose-dependently stimulates glucagon secretion in healthy human subjects at euglycaemia. *Diabetologia* 2003;46:798–801
26. Christensen M, Vedtofte L, Holst JJ, Vilsbøll T, Knop FK. Glucose-dependent insulinotropic polypeptide: a bifunctional glucose-dependent regulator of glucagon and insulin secretion in humans. *Diabetes* 2011;60:3103–3109
27. Rachman J, Gribble FM, Barrow BA, Levy JC, Buchanan KD, Turner RC. Normalization of insulin responses to glucose by overnight infusion of glucagon-like peptide 1 (7-36) amide in patients with NIDDM. *Diabetes* 1996;45:1524–1530
28. Kelly A, Sheikh S, Stefanovski D, et al. Effect of sitagliptin on islet function in pancreatic insufficient cystic fibrosis with abnormal glucose tolerance. *J Clin Endocrinol Metab* 2021;106:2617–2634
29. Muscelli E, Casolaro A, Gastaldelli A, et al. Mechanisms for the antihyperglycemic effect of sitagliptin in patients with type 2 diabetes. *J Clin Endocrinol Metab* 2012;97:2818–2826
30. Gudipaty L, Rosenfeld NK, Fuller CS, Gallop R, Schutta MH, Rickels MR. Effect of exenatide, sitagliptin, or glimepiride on  $\beta$ -cell secretory capacity in early type 2 diabetes. *Diabetes Care* 2014;37:2451–2458
31. Vilsbøll T, Krarup T, Madsbad S, Holst JJ. Defective amplification of the late phase insulin response to glucose by GIP in obese type II diabetic patients. *Diabetologia* 2002;45:1111–1119
32. Vilsbøll T, Knop FK, Krarup T, et al. The pathophysiology of diabetes involves a defective amplification of the late-phase insulin response to glucose by glucose-dependent insulinotropic polypeptide-regardless of etiology and phenotype. *J Clin Endocrinol Metab* 2003;88:4897–4903
33. Holst JJ, Gromada J, Nauck MA. The pathogenesis of NIDDM involves a defective expression of the GIP receptor. *Diabetologia* 1997;40:984–986
34. Højberg PV, Vilsbøll T, Zander M, et al. Four weeks of near-normalization of blood glucose has no effect on postprandial GLP-1 and GIP secretion, but augments pancreatic B-cell responsiveness to a meal in patients with Type 2 diabetes. *Diabet Med* 2008;25:1268–1275
35. Knop FK, Vilsbøll T, Højberg PV, et al. The insulinotropic effect of GIP is impaired in patients with chronic pancreatitis and secondary diabetes mellitus as compared to patients with chronic pancreatitis and normal glucose tolerance. *Regul Pept* 2007;144:123–130
36. Sun X, Yi Y, Xie W, et al. CFTR influences beta cell function and insulin secretion through non-cell autonomous exocrine-derived factors. *Endocrinology* 2017;158:3325–3338
37. Hart NJ, Aramandla R, Poffenberger G, et al. Cystic fibrosis-related diabetes is caused by islet loss and inflammation. *JCI Insight* 2018;3:e98240
38. Edlund A, Esguerra JL, Wendt A, Flodström-Tullberg M, Eliasson L. CFTR and anoctamin 1 (ANO1) contribute to cAMP amplified exocytosis and insulin secretion in human and murine pancreatic beta-cells. *BMC Med* 2014;12:87
39. Seaquist ER, Kahn SE, Clark PM, Hales CN, Porte D Jr, Robertson RP. Hyperproinsulinemia is associated with increased beta cell demand after hemipancreatectomy in humans. *J Clin Invest* 1996;97:455–460
40. Røder ME, Porte D Jr, Schwartz RS, Kahn SE. Disproportionately elevated proinsulin levels reflect the degree of impaired B cell secretory capacity in patients with noninsulin-dependent diabetes mellitus. *J Clin Endocrinol Metab* 1998;83:604–608
41. Alarcón C, Leahy JL, Schuppin GT, Rhodes CJ. Increased secretory demand rather than a defect in the proinsulin conversion mechanism causes hyperproinsulinemia in a glucose-infusion rat model of non-insulin-dependent diabetes mellitus. *J Clin Invest* 1995;95:1032–1039
42. Hostens K, Ling Z, Van Schravendijk C, Pipeleers D. Prolonged exposure of human beta-cells to high glucose increases their release of proinsulin during acute stimulation with glucose or arginine. *J Clin Endocrinol Metab* 1999;84:1386–1390
43. Edlund A, Barghouth M, Huhn M, et al. Defective exocytosis and processing of insulin in a cystic fibrosis mouse model. *J Endocrinol* 2019;241:45–57
44. Moheet A, Beisang D, Zhang L, et al.; PROSPECT Investigators of the Cystic Fibrosis Foundation Therapeutics Development Network. Lumacaftor/ivacaftor therapy fails to increase insulin secretion in F508del/F508del CF patients. *J Cyst Fibros* 2021;20:333–338
45. Kelly A, De Leon DD, Sheikh S, et al. Islet hormone and incretin secretion in cystic fibrosis after four months of ivacaftor therapy. *Am J Respir Crit Care Med* 2019;199:342–351
46. Gnanapragasam H, Mustafa N, Bierbrauer M, Andrea Providence T, Dandona P. Semaglutide in Cystic Fibrosis-Related Diabetes. *J Clin Endocrinol Metab* 2020;105:2341–2344
47. Zhao P, Liang YL, Belousoff MJ, et al. Activation of the GLP-1 receptor by a non-peptidic agonist. *Nature* 2020;577:432–436