



Carbohydrate Counting at Meal Time Followed by a Small Secondary Postprandial Bolus Injection at 3 Hours Prevents Late Hyperglycemia, Without Hypoglycemia, After a High-Carbohydrate, High-Fat Meal in Type 1 Diabetes

Diabetes Care 2016;39:e141–e142 | DOI: 10.2337/dc16-0709

Matthew D. Campbell,^{1,2}
Mark Walker,³ David King,⁴
Javier T. Gonzalez,⁵ Dean Allerton,⁴
Emma J. Stevenson,³ James A. Shaw,³
and Daniel J. West³

Patients with type 1 diabetes are provided guidance and structured education on adjusting their mealtime bolus insulin dose based on meal carbohydrate content. However, recent research in patients using continuous subcutaneous insulin infusion has highlighted the role of dietary fat in increasing prandial insulin requirements, particularly late into the postprandial period (1,2).

Many patients are treated with basal-bolus insulin injections, which is a less flexible method of insulin therapy than continuous subcutaneous insulin infusion, e.g., patients are unable to administer dual-wave/extended bolus at mealtime. It is important to consider that patients are encouraged to count carbohydrates and administer rapid-acting insulin units at mealtime and that the time-action profiles of lispro/aspart vary in a dose-dependent manner. The peak insulin concentration after a pre-meal bolus usually occurs within the first 60 min (3), but the peak action is usually observed between 90 and 120 min, and this duration can vary between 4 and 6 h. However, peak postprandial lipemia

occurs after 3–4 h (4), which can promote acute peripheral insulin resistance and increase hepatic glucose output (5) and thus hyperglycemia.

We investigated the influence of rapid-acting insulin dose and timing after high-carbohydrate, high-fat meals in patients with type 1 diabetes using insulin analog injections.

A total of 10 male patients (mean \pm SD age 26 ± 4 years, BMI 25.4 ± 1.6 kg/m², diabetes duration 17 ± 5 years, age at diagnosis 9 ± 4 years; HbA_{1c} 52.5 ± 5.9 mmol/mol [$7.0 \pm 0.5\%$]) using insulin aspart and either basal insulin glargine ($n = 8$) or detemir ($n = 2$) attended the Newcastle National Institute for Health Research Clinical Research Facility at 0730 h on four occasions.

Experimental trials were randomized and involved consuming either a 1) low-fat meal with bolus insulin dictated by carbohydrate counting (Low-Fat100%), 2) high-fat meal with bolus insulin dictated by carbohydrate counting (High-Fat100%), 3) high-fat meal with a bolus insulin dose increased by 30% (High-Fat130%), or 4) high-fat meal with bolus insulin dictated by carbohydrate

counting, with an additional 30% administered at 3 h postmeal (High-FatSplit). Meals were matched for carbohydrate and protein content but differed in fat content (low fat: 68 g carbohydrate, 26 g protein, 5 g fat; high fat: 68 g carbohydrate, 26 g protein, 55 g fat). Interval blood samples were collected over a 6-h postprandial period and were processed for glucose (Biosen C-Line; EKF-Diagnostics, London, U.K.) and exogenous insulin (Invitron Insulin; Invitron, Monmouth, U.K.).

The results for glucose and insulin are presented in Fig. 1A and B, respectively. High-Fat100% was associated with late hyperglycemia, whereas 60% of patients experienced hypoglycemia (glucose <3.9 mmol/L) during High-Fat130%, with no incidences under the other conditions. Postprandial glycemic excursions (time-course changes and area under the curve) were similar between Low-Fat100% and High-FatSplit, despite the additional 50 g of fat consumed in the latter trial.

When a meal has a high-carbohydrate and high-fat content using the carbohydrate counting method for insulin dose

¹Carnegie School of Sport, Leeds Beckett University, Leeds, U.K.

²Carnegie Research Institute, Leeds Beckett University, Leeds, U.K.

³Institute of Cellular Medicine, Newcastle University, Newcastle-upon-Tyne, U.K.

⁴Faculty of Health and Life Sciences, Northumbria University, Newcastle-upon-Tyne, U.K.

⁵Department for Health, University of Bath, Bath, U.K.

Corresponding author: Daniel J. West, daniel.west@newcastle.ac.uk.

Received 31 March 2016 and accepted 19 May 2016.

Clinical trial reg. no. NCT02595658, clinicaltrials.gov.

© 2016 by the American Diabetes Association. Readers may use this article as long as the work is properly cited, the use is educational and not for profit, and the work is not altered. More information is available at <http://diabetesjournals.org/site/license>.

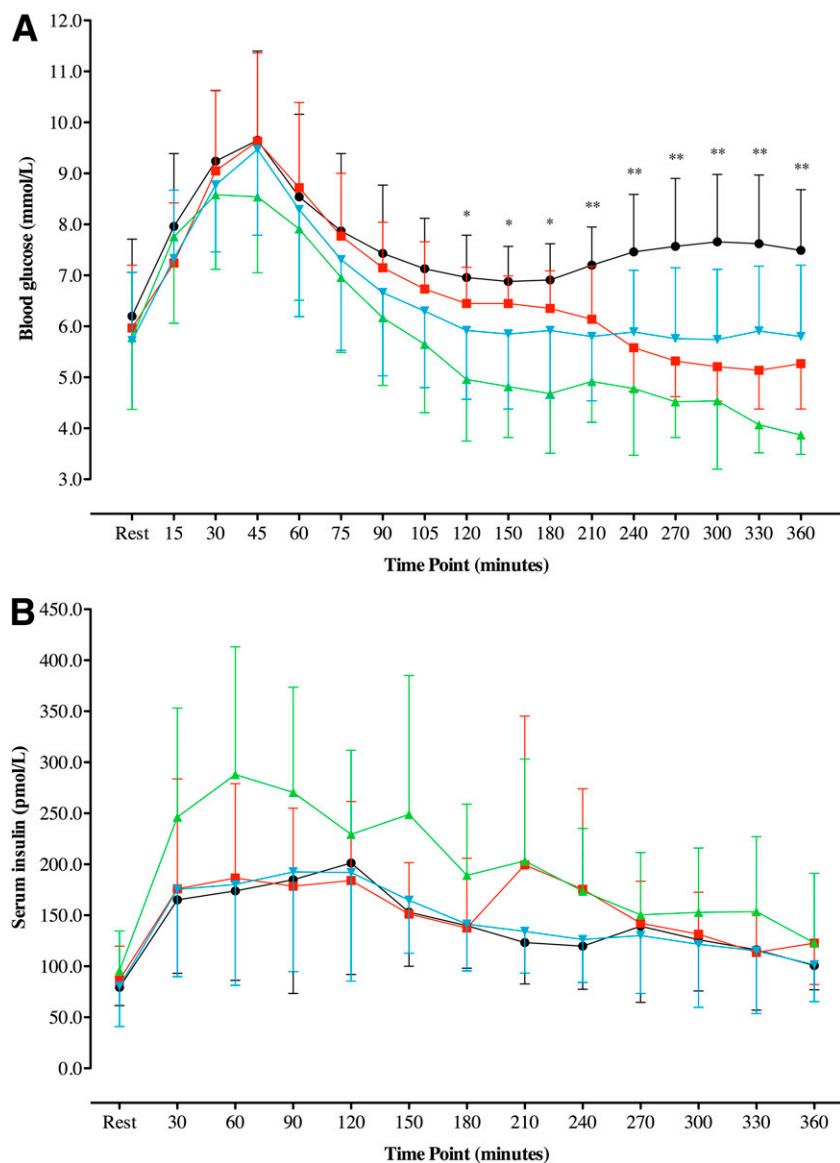


Figure 1—Time-course changes in blood glucose (A) and serum insulin (B). Blue trace, Low-Fat100%; black trace, High-Fat100%; red trace, High-FatSplit; green trace, High-Fat130%. Data presented as mean ± SD (n = 10). * indicates that all conditions are significantly different from High-Fat130%. ** indicates that all conditions are significantly different from High-Fat100% and High-Fat130%.

adjustments at mealtime and administering additional bolus insulin units 3 h later provide similar postprandial glucose control to a meal containing negligible fat,

without causing hypoglycemia. Patients should be advised that increasing the mealtime insulin dose alone is not an effective strategy and is an approach that

may increase the risk of early postprandial hypoglycemia.

Acknowledgments. The authors thank the study participants for their time, effort, and commitment and the research team at the National Institute for Health Research Clinical Research Facility, Newcastle-upon-Tyne, for their assistance.

Funding. This study was funded by Newcastle University and Northumbria University.

Duality of Interest. No potential conflicts of interest relevant to this article were reported.

Author Contributions. M.D.C. and D.J.W. contributed to the study concept and design, researched data, and wrote the manuscript. M.W. and J.A.S. contributed to participant recruitment and reviewed and edited the manuscript. D.K., J.T.G., and D.A. aided in data collection and data analysis. E.J.S. contributed to the study concept and design, provided materials, and reviewed and edited the manuscript. D.J.W. is the guarantor of this work and, as such, had full access to all of the data in the study and takes responsibility for the integrity of the data and accuracy of data analysis.

References

1. Bell KJ, Smart CE, Steil GM, Brand-Miller JC, King B, Wolpert HA. Impact of fat, protein, and glycemic index on postprandial glucose control in type 1 diabetes: implications for intensive diabetes management in the continuous glucose monitoring era. *Diabetes Care* 2015;38:1008–1015
2. Wolpert HA, Atakov-Castillo A, Smith SA, Steil GM. Dietary fat acutely increases glucose concentrations and insulin requirements in patients with type 1 diabetes: implications for carbohydrate-based bolus dose calculation and intensive diabetes management. *Diabetes Care* 2013;36:810–816
3. Homko C, Deluzio A, Jimenez C, Kolaczynski JW, Boden G. Comparison of insulin aspart and lispro: pharmacokinetic and metabolic effects. *Diabetes Care* 2003;26:2027–2031
4. Roberts R, Bickerton AS, Fielding BA, et al. Reduced oxidation of dietary fat after a short term high-carbohydrate diet. *Am J Clin Nutr* 2008;87:824–831
5. Ferrannini E, Barrett EJ, Bevilacqua S, DeFronzo RA. Effect of fatty acids on glucose production and utilization in man. *J Clin Invest* 1983;72:1737–1747