



# Large-for-Gestational-Age Neonates in Type 1 Diabetes and Pregnancy: Contribution of Factors Beyond Hyperglycemia

Rachel T. McGrath,<sup>1,2</sup> Sarah J. Glasstras,<sup>1,2</sup>  
Samantha L. Hocking,<sup>3</sup> and  
Gregory R. Fulcher<sup>1</sup>

*Diabetes Care* 2018;41:1821–1828 | <https://doi.org/10.2337/dc18-0551>

Despite significant reductions in serious adverse perinatal outcomes for women with type 1 diabetes in pregnancy, the opposite effect has been observed for fetal overgrowth and associated complications, such as neonatal hypoglycemia, shoulder dystocia, and admission to the neonatal intensive care unit. In addition, infants born large for gestational age (LGA) have an increased lifetime risk of obesity, diabetes, and chronic disease. Although exposure to hyperglycemia plays an important role, women who seemingly achieve adequate glycemic control in pregnancy continue to experience a greater risk of excess fetal growth, leading to LGA neonates and macrosomia. We review potential contributors to excess fetal growth in pregnancies complicated by type 1 diabetes. In addition to hyperglycemia, we explore the role of glycemic variability, prepregnancy overweight and obesity, gestational weight gain, and maternal lipid levels. Greater understanding of the stimuli that drive excess fetal growth could lead to targeted management strategies in pregnant women with type 1 diabetes, potentially reducing the incidence of LGA neonates and the inherent risk of acute and long-term complications.

The relationship between type 1 diabetes in pregnancy and adverse perinatal outcomes is universally recognized. Early in pregnancy, women with type 1 diabetes have an increased risk of miscarriage and a greater likelihood of their fetus having congenital malformations, and prepregnancy planning with optimization of glycemic control reduces these risks (1). Later in pregnancy, women with type 1 diabetes are more likely to experience preeclampsia, preterm birth, induction of labor, cesarean section, and delivery complications (2). Of note, babies born to women with type 1 diabetes have significantly higher rates of being large for gestational age (LGA) (birth weight >90th percentile for gestational age and sex), macrosomia (birth weight >4,000 g or 8 lb 13 oz), and neonatal hypoglycemia (3).

Hyperglycemia is believed to be the underlying cause for many of the adverse fetal, neonatal, and maternal outcomes in pregnancies complicated by type 1 diabetes; however, in women with well-controlled diabetes, an increased incidence of perinatal complications still is observed (4). In particular, the rates of LGA neonates and macrosomia remain high, experienced by up to 50% of women (5), and suggest that hyperglycemia may not be the only driver of fetal overgrowth for women with type 1 diabetes or that it may act in concert with other factors that lead to fetal hyperinsulinemia and excess fetal weight gain.

Knowledge about the clinical implications of LGA or macrosomia has increased over the past two decades, with a broader appreciation of the effect of fetal programming on the metabolic health of the offspring. Elevated birth weight may be associated with a greater risk of obesity, type 2 diabetes, and chronic disease in later life (6).

<sup>1</sup>Department of Diabetes, Endocrinology & Metabolism and the Northern Clinical School, Faculty of Medicine and Health, The University of Sydney, Royal North Shore Hospital, St Leonards, Sydney, New South Wales, Australia

<sup>2</sup>Kolling Institute, St Leonards, Sydney, New South Wales, Australia

<sup>3</sup>Central Clinical School and The Boden Institute of Obesity, Nutrition, Exercise & Eating Disorders, Faculty of Medicine and Health, Charles Perkins Centre, The University of Sydney, New South Wales, Australia

Corresponding author: Rachel T. McGrath, [rachel.mcgrath@sydney.edu.au](mailto:rachel.mcgrath@sydney.edu.au).

Received 12 March 2018 and accepted 7 May 2018.

© 2018 by the American Diabetes Association. Readers may use this article as long as the work is properly cited, the use is educational and not for profit, and the work is not altered. More information is available at <http://www.diabetesjournals.org/content/license>.

Furthermore, LGA neonates still experience higher rates of acute perinatal complications than their appropriate-weight counterparts, including neonatal hypoglycemia, shoulder dystocia, and admission to the neonatal intensive care unit (7).

The St. Vincent declaration of 1989 set a 5-year target to reduce the risk of adverse perinatal outcomes for women with type 1 diabetes to the level of women without diabetes (8). Despite many advances in diabetes management and therapy, this target has not been attained. In light of the continuing high incidence of LGA and macrosomic infants and their greater risk of acute and chronic complications, we evaluated the factors beyond hyperglycemia associated with the risk of fetal overgrowth in type 1 diabetes and pregnancy, with a particular focus on the possible roles of glycemic variability, prepregnancy BMI, gestational weight gain, and maternal lipid levels (Fig. 1). This review describes pertinent studies on the topic of fetal growth in pregnancy complicated by type 1 diabetes but does not intend to include an exhaustive list of all literature on this subject. First, we briefly review the role of maternal hyperglycemia in excess fetal growth.

**MATERNAL GLYCEMIA**

**Glycemic Control and Hyperglycemia**  
Initially described by Pedersen (9), maternal hyperglycemia in the second and third trimesters of pregnancy can promote excess fetal weight gain through stimulation of fetal hyperinsulinemia. Fetal insulin

production enhances glucose utilization in insulin-sensitive tissues, such as liver, heart, skeletal muscle, and adipose tissue, and fetal hyperinsulinemia leads to the expansion of adipocytes and increased fat tissue deposition. Early maternal hyperglycemia, such as that experienced by women with type 1 diabetes in the late first trimester and beginning of the second trimester, may prime the fetus toward elevated insulin production, and this coincides with the gestational age at which fetal fat accretion begins (10,11).

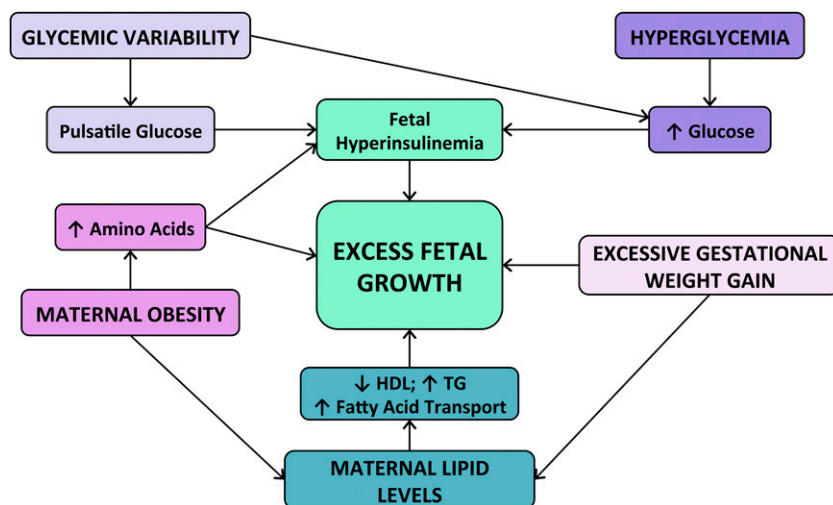
A continuous relationship exists between maternal fasting plasma glucose and birth weight, with a similar association seen for HbA<sub>1c</sub> (12,13). In addition, we recently observed that HbA<sub>1c</sub> in type 1 diabetes and pregnancy is significantly and positively correlated with fetal abdominal circumference in the second and third trimesters and that HbA<sub>1c</sub> >6% (42 mmol/mol) later in pregnancy is associated with an increased risk of neonates being born LGA (14), similar to the findings of Maresh et al. (3). As well as fasting plasma glucose and overall hyperglycemia, elevated glucose levels during specific periods of the day (late morning and afternoon in the second trimester and evening in the third trimester) are associated with LGA neonates in women with type 1 diabetes (15). Thus, the latest American Diabetes Association guidelines recommend that to reduce the risk of LGA neonates, HbA<sub>1c</sub> should be targeted to 6–6.5% (42–48 mmol/mol)

during pregnancy and maintained at <6% (42 mmol/mol), if possible, avoiding hypoglycemia. Although the target HbA<sub>1c</sub> of 6% (42 mmol/mol) is considered tight glycemic control for type 1 diabetes, the average HbA<sub>1c</sub> in pregnant women without diabetes is 5% (31 mmol/mol) in late pregnancy (16). The difference between 5% (31 mmol/mol) and 6% (42 mmol/mol) (1% [11 mmol/mol]) corresponds to a higher average circulating glucose of ~1.6 mmol/L (~29 mg/dL) in type 1 diabetes. Moreover, 19% of women with type 1 diabetes who maintain their HbA<sub>1c</sub> <5.5% (37 mmol/mol) in the third trimester have LGA neonates compared with 52% of women with HbA<sub>1c</sub> >6.4% (46 mmol/mol) (17).

Although maternal hyperglycemia leads to a significant risk of excess fetal growth, several studies have found no association between maternal glycemic control and fetal overgrowth or that a reduction in hyperglycemia completely ameliorates the risk of infants being born LGA. For example, use of real-time continuous glucose monitoring (CGM) was associated with improved glycemic control and reduced the incidence of fetal overgrowth and neonatal hypoglycemia, yet the proportion of neonates who were born LGA remained high at 53% (18). Likewise, closed-loop insulin pump technology improved glycemic control with less time spent in hyperglycemia; however, LGA births occurred in 81% of offspring (19). Fetal hyperinsulinemia is recognized as the main causal factor for excess fetal growth, yet the association between fetal insulin levels and maternal glucose levels generally is not strong enough to explain all of the variation seen (20). Thus, abnormal maternal glycemia may account for some but not all of the risk of LGA neonates in type 1 diabetes and pregnancy. In other instances, either small perturbations in glycemic control leading to mild maternal hyperglycemia throughout pregnancy sufficiently stimulate excess fetal growth in type 1 diabetic pregnancy or elements outside hyperglycemia play a causative or contributory role.

**Glycemic Variability**

Glycemic variability (GV), or acute fluctuations in blood glucose levels, occurs frequently in individuals with type 1 diabetes, despite acceptable glycemic control reflected by HbA<sub>1c</sub>. The optimal method of



**Figure 1**—Contribution of maternal factors to fetal overgrowth in type 1 diabetes in pregnancy and possible mechanisms of action. Additional cross talk between pathways may occur through as-yet unidentified mechanisms. TG, triglyceride.

detection of GV is through the analysis of CGM data, and CGM is an accurate technique for assessing glucose levels in pregnancy complicated by type 1 diabetes (21). Of note, women with type 1 diabetes in pregnancy experience greater GV than those with gestational diabetes mellitus (GDM) (22), with both significant intra- and interday variability in glucose (23). Furthermore, CGM is a more robust indicator of the time spent in hyperglycemia in pregnancy than HbA<sub>1c</sub> (24). A small study of women with and without preexisting diabetes found that average 3-day maternal glucose levels were not associated with birth weight, but a significant positive correlation between hyperglycemic excursions and birth weight centile was observed (25).

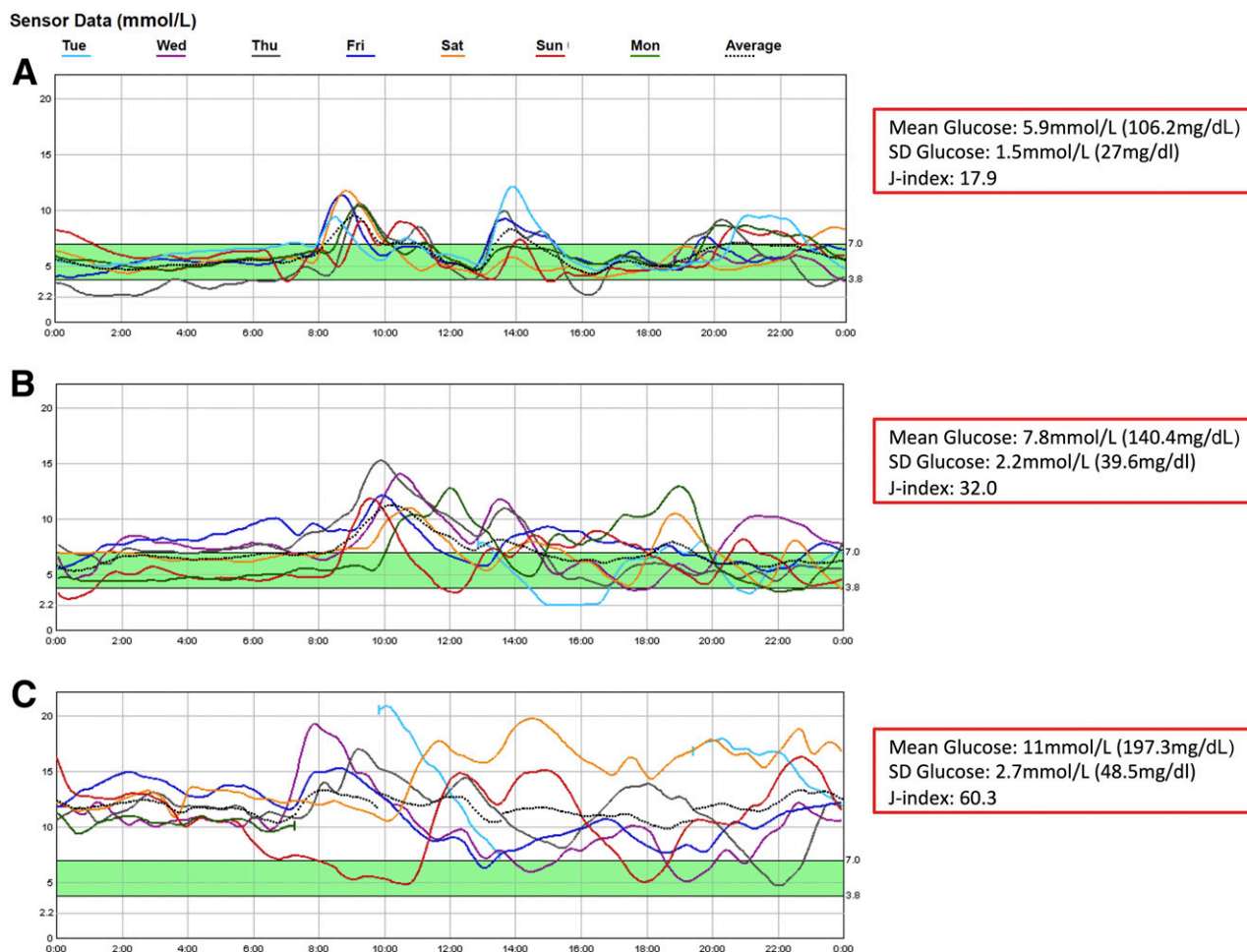
In addition to identifying transient periods of hyperglycemia, CGM data can be used to derive summary measures of GV, which is relevant in pregnancy

because higher indices of GV in the second and third trimesters have been associated with LGA neonates for women with type 1 diabetes (15). Furthermore, increased GV was predictive of asymmetrical fetal growth and associated with an increased risk of macrosomia, which was attributed to fluctuations in glucose rather than to time spent in hyperglycemia per se (26). In our center, we have observed that the combination of elevated GV and HbA<sub>1c</sub> >6% (42 mmol/mol) in the late second trimester of type 1 diabetic pregnancy was associated with LGA neonates (27). In addition, women who had LGA neonates had a significantly greater J-index (a measure of GV that incorporates both the mean and the SD of glucose to describe overall glycemia and variability) between 24 and 28 weeks of gestation. Examples of CGM traces for women with type 1 diabetes are provided in Fig. 2, showing

low, moderate, and high levels of mean glucose and GV (27).

Of note, reductions in hyperglycemia and GV, specifically the SD of glucose and mean amplitude of glycemic excursions for women with type 1 diabetes who used real-time CGM, have led to a lower risk of LGA neonates (18). However, the absolute reductions in HbA<sub>1c</sub>, SD of glucose, and mean amplitude of glycemic excursions from baseline to 34 weeks of gestation for women in the real-time CGM group were 6.83% to 6.35% (51 to 46 mmol/mol), 3.1 to 2.2 (55.8 to 36.9 mg/dL), and 6.0 to 4.2 mmol/L (108 to 75.6 mg/dL), respectively. Although clinically significant, this may not have been a sufficient decrease in overall glucose levels or GV to mitigate fetal overgrowth because 53% of neonates in the real-time CGM group were, nonetheless, born LGA.

The use of short-term glycemic markers in pregnancy rather than HbA<sub>1c</sub> has been



**Figure 2**—Examples of CGM traces carried out between 24 and 28 weeks of gestation in women with type 1 diabetes in pregnancy (27). A: Low mean glucose with low GV. B: Moderate mean glucose with moderate GV. C: High mean glucose with high GV. GV indicated by SD of glucose and J-index.

suggested because they can more accurately reflect glucose excursions that occur over weeks rather than months (28), which could be more relevant during gestation. Third trimester 1,5-anhydroglucitol, a short-term marker of glycemic control that is significantly correlated with measures of GV, was a better predictor of LGA neonates than HbA<sub>1c</sub> measured at the same time point in pregnancy in women with type 1 diabetes (29). Furthermore, a study of diabetes complicating 85 pregnancies (including 37 women with type 1 diabetes) showed that 1,5-anhydroglucitol is inversely correlated with birth weight and may be a useful adjunct to HbA<sub>1c</sub> in the assessment of women with diabetes at risk for fetal overgrowth (30). Another marker of recent glucose exposure (2–4 weeks) is glycated albumin, and higher levels of glycated albumin and HbA<sub>1c</sub> 1 month before birth have been associated with LGA neonates in GDM and preexisting diabetes in pregnancy (31). Additional studies are required to determine the utility of glycated albumin compared with HbA<sub>1c</sub> in type 1 diabetes and pregnancy.

Exposure to short-term periods of hyperglycemia, in addition to chronic hyperglycemia, may contribute to fetal hyperinsulinemia, leading to a weight-promoting environment in utero. This is supported by evidence that glucose excursions are more predictive of macrosomia than HbA<sub>1c</sub> (32), and third trimester peaks in glucose predict excess fetal growth (17). In addition, animal models have demonstrated that pulsatile glucose rather than chronic hyperglycemia leads to higher fetal insulin production (33). Short-term measures of glucose fluctuations, such as GV indices calculated from CGM data, 1,5-anhydroglucitol, and glycated albumin, may be more sensitive indicators of glucose patterns sufficient to increase fetal weight gain. Another hypothesis is that increased GV enhances oxidative stress and endothelial dysfunction (34). Oxidative stress is greater in pregnancies complicated by type 1 diabetes than by GDM, yet levels of breakdown products associated with oxidative stress are higher in both forms of diabetes in pregnancy than in nondiabetic pregnancy (35). Furthermore, a relationship between endothelial dysfunction in women with type 1 and type 2 diabetes—specifically elevated soluble E-selectin—and fetal overgrowth has been demonstrated (36). Additional research to elucidate

the contribution of GV to oxidative stress and/or endothelial dysfunction in type 1 diabetes in pregnancy and the possible effects on fetal growth in experimental models or clinical studies would be of benefit. Moreover, future studies should determine whether reducing glycemic excursions in type 1 diabetes in pregnancy contribute to lower rates of LGA neonates.

## PREPREGNANCY BMI AND GESTATIONAL WEIGHT GAIN

### Prepregnancy BMI and Maternal Obesity

The rise in obesity worldwide has led to a higher incidence of elevated prepregnancy BMI in women of reproductive age. Of note, even in the absence of diabetes, prepregnancy obesity increases the likelihood of fetal overgrowth (37,38). Furthermore, the increased birth weight observed in neonates born to obese mothers is attributable to greater fat mass than lean mass because the higher supply of nutrients promotes fetal hyperinsulinemia, leading to increased neonatal adiposity (39,40).

Traditionally, type 1 diabetes has been associated with a lean body type; however, the number of pregnant women with type 1 diabetes who have a BMI in the overweight (>25 kg/m<sup>2</sup>) or obese (>30 kg/m<sup>2</sup>) range has been increasing (41). For example, a study in Sweden found that the rate of overweight and obesity among pregnant women with type 1 diabetes is ~45% greater than for pregnant women without type 1 diabetes (42). These results have been mirrored in Ireland (43), Australia (41), and Finland (44), where maternal BMI has been independently associated with a higher likelihood of macrosomia together with third trimester HbA<sub>1c</sub> (44). In fact, the combination of elevated BMI and type 1 diabetes in pregnancy has a synergistic effect, and the presence of both factors is estimated to increase the risk of LGA neonates by 13-fold (42).

Maternal obesity may compound hyperglycemia in type 1 diabetes to augment the fetal nutrient supply, yet elevated fetal abdominal circumference as early as 18 weeks of gestation is associated with higher maternal BMI rather than glycemic control (45). Furthermore, a prepregnancy BMI >30 kg/m<sup>2</sup> was an independent risk factor for LGA neonates in women with either type 1 or type 2 diabetes in pregnancy

(46). The relationship between maternal body weight and fetal overgrowth appears to be linear because the likelihood of neonates being born with a ponderal index (birth weight in grams per length in cubic centimeters) >90th percentile was higher for obese than for overweight women with type 1 diabetes (42). Similarly, higher prepregnancy BMI compounded poor maternal glycemic control to increase the risk of neonatal LGA, yet the interaction among maternal BMI, hyperglycemia, and fetal overgrowth is restricted to women with a BMI >23 kg/m<sup>2</sup> (47).

### Gestational Weight Gain

In addition to the trend toward overweight and obesity, gestational weight gain is increasing in women with type 1 diabetes (1). The Institute of Medicine gestational weight gain guidelines recommend the optimal targets for weight gain in pregnancy on the basis of prepregnancy BMI and further categorize weight gain as insufficient, appropriate, or excessive (48). As is the case in pregnancies not complicated by diabetes, excessive gestational weight gain in type 1 diabetes heightens the risk of macrosomia (49). Although women with type 1 diabetes who become pregnant at a greater body weight or gain excessive weight in pregnancy tend to have a higher HbA<sub>1c</sub> (47,50), the relationship between accelerated fetal growth and excess gestational weight gain in type 1 diabetes remains significant after controlling for glycemia (51) and adjustment for prepregnancy BMI in pre-GDM (51,52). In addition, no difference in prepregnancy BMI has been found between women with type 1 diabetes who did or did not have LGA neonates, yet excessive gestational weight gain and HbA<sub>1c</sub> in the first and third trimesters were independent predictors of LGA (53). Excessive gestational weight gain also may be a risk factor for asymmetrical fetal growth in women with type 1 diabetes because for every 1-lb increase in maternal weight during gestation, the likelihood of having an asymmetrical LGA infant (birth weight >90th percentile for gestational age, race, and sex) increases by 4% (54).

### Possible Mechanisms

The mechanisms underpinning the contribution of maternal obesity and gestational weight gain to fetal overgrowth in type 1 diabetes in pregnancy have not

been fully determined. Excess maternal weight either before or during pregnancy could compound hyperglycemia through increased insulin resistance. However, weight gain itself is a known significant risk factor for LGA in nondiabetic pregnancy (55), and this association persists in type 1 diabetes in pregnancy, even when tight glycemic control is achieved. In addition, maternal obesity induces insulin resistance in the fetus (56), which has been postulated to contribute toward greater neonatal fat mass (9,55).

Additional nutrients (separate from glucose) crossing the placenta may contribute to excess fetal growth. Fetal hyperinsulinemia has long been recognized to be stimulated by amino acids in addition to glucose and leads to increased fetal adiposity and birth weight (57,58). Moreover, some macrosomic infants born to mothers without diabetes are hyperinsulinemic (55). Excessive gestational weight gain is associated with higher levels of circulating fatty acids (59), and in lean women with type 1 diabetes, fetal weight correlates with plasma amino acid levels (58). Furthermore, a positive relationship between maternal BMI and cord blood amino acid levels has been observed independent of maternal fasting plasma glucose (60). With the increase in obesity in pregnant women with type 1 diabetes, amino acid transfer across the placenta may be greater (61), and fatty acid transfer may be upregulated (as evidenced in obese women with type 2 diabetes [62]) (Fig. 1).

Another potential mediator of fetal weight gain is leptin, a hormone secreted from adipocytes that suppresses

appetite. Paradoxically, leptin levels are increased in obese individuals who are thus considered to be leptin resistant, and similarly, obese pregnant women have higher levels of leptin than their lean counterparts (63). Leptin may be a surrogate marker that mirrors an underlying metabolic process responsible for excess fetal growth. In addition, in women with type 1 diabetes, type 2 diabetes, and without diabetes, maternal BMI significantly correlates with fetal leptin levels, as has third trimester HbA<sub>1c</sub> (in women with pre-GDM alone) (64). Cord blood leptin levels are higher in neonates of women with type 1 diabetes than in women with GDM or without diabetes, and higher leptin levels have been associated with increased birth weight and LGA neonates (65). Furthermore, despite no difference in maternal HbA<sub>1c</sub> during pregnancy, these infants are more likely to be overweight or obese at 7 years of age (66). Fetal leptin levels also are correlated with fetal IGF-1, a key regulator of fetal growth, and a significant positive association exists between cord blood IGF-1 and neonatal adiposity in pregnant women without diabetes (67).

In summary, in addition to hyperglycemia, weight gain above the recommended rates in pregnancy contributes to excess fetal weight gain and macrosomia, possibly through fetal overnutrition and hyperinsulinemia, together with alterations in adipokine levels. These data suggest that interventions targeting both maternal blood glucose levels and body weight may result in the best environment for the growing fetus, and prepregnancy

planning in type 1 diabetes could comprise management of glycemia and weight before pregnancy (1,68), with an ongoing focus on these parameters during gestation. Our review of the evidence for such management strategies is shown in Table 1.

## MATERNAL LIPID LEVELS

Fatty acids are an important source of fuel for the growing fetus, particularly in later gestation, and are vital for normal retinal and neural development (69). Consequently, maternal circulating lipid levels increase throughout pregnancy, and the gestational rise in lipids observed for women with type 1 diabetes is similar to that seen in nondiabetic pregnancy (70).

Recently, low HDL levels throughout type 1 diabetic pregnancy were associated with LGA neonates, as were higher triglycerides in the first and third trimesters (71). Of note, these relationships were independent of maternal prepregnancy BMI, gestational weight gain, and HbA<sub>1c</sub>, suggesting a separate role for lipids in modulating fetal growth. Similarly, Göbl et al. (72) observed that elevated triglycerides and low HDL levels in the third trimester are predictive of LGA neonates in women with pre-GDM. Furthermore, type 1 diabetes has been shown to lead to increased placental triglyceride concentrations and a greater fetal-to-maternal triglyceride ratio, indicating an augmented transfer of lipids across the placenta (73). This finding has been confirmed by microarray analyses demonstrating an upregulation of genes related to lipid pathways in the placentas

**Table 1—Modifiable maternal factors and possible management strategies to target individual factors**

Modifiable factor	Management strategy	Evidence*
Hyperglycemia	Maintaining HbA <sub>1c</sub> <6.5% (48 mmol/mol) or <6% (42 mmol/mol), where possible, before and throughout gestation	Strong (3,18). Many studies have demonstrated that lower HbA <sub>1c</sub> in type 1 diabetes in pregnancy can reduce the incidence of LGA neonates.
GV	Reducing frequent excursions in blood glucose levels	Minimal (18,26,27). Additional prospective clinical studies are required.
Maternal obesity	Losing weight before pregnancy to achieve a BMI <25 kg/m <sup>2</sup>	Moderate (42,44). Studies are yet to be carried out in type 1 diabetes in pregnancy.
Gestational weight gain	Minimizing weight gain throughout pregnancy to keep in line with Institute of Medicine guidelines (48)	Moderate (47,49). Studies are yet to be carried out in type 1 diabetes in pregnancy.
Maternal lipid levels	Lowering maternal triglyceride levels through dietary manipulation	Minimal (72,73). Further prospective clinical studies are required.

The aim of reducing the incidence of LGA neonates in type 1 diabetes in pregnancy are outlined. \*The evidence is graded as minimal, moderate, or strong, where minimal indicates that supporting literature includes mechanistic or associative studies only, moderate indicates minimal evidence along with evidence in studies outside type 1 diabetes in pregnancy, and strong indicates minimal and moderate evidence as well as direct evidence from studies in type 1 diabetes in pregnancy.

of type 1 diabetic pregnancies, specifically fatty acid uptake and transport (74). Moreover, venous cord blood levels of fatty acids are significantly increased in pregnancies complicated by type 1 diabetes compared with nondiabetic pregnancies (75).

We hypothesize that an enhanced supply of fatty acids to the fetus, in conjunction with fetal hyperinsulinemia, accelerates the incorporation of fatty acids into adipocytes, leading to greater fetal adiposity. Szabo and Szabo (76) were the first to suggest that maternal free fatty acids cross the placenta to the fetal circulation where they are taken up by developing adipocytes, and fatty acids, rather than glucose, are the primary cause of fetal adiposity. In addition, women with an elevated prepregnancy BMI have alterations in placental genes that regulate fatty acid transport, which were suggested to affect fetal metabolism (77) and further underscore the importance of reducing overweight and obesity before pregnancy as well as minimizing gestational weight gain to decrease the availability of circulating lipids and fatty acid transport across the placenta. Interventions to reduce maternal lipid levels may result in lower levels of excess fetal growth; however, a study of a low-cholesterol diet during pregnancy for women without diabetes found no effect on birth weight (78). To our knowledge, no published studies have investigated the effect of a lipid-modulating diet on birth weight outcomes in women with type 1 diabetes in pregnancy; additional work to determine the possible effect of weight loss before pregnancy or a diet lower in triglycerides on fetal overgrowth may be warranted.

## CONCLUSIONS

The management of type 1 diabetes in pregnancy centers on insulin therapy to maintain tight glycemic control and achieve HbA<sub>1c</sub> levels close to the normal range. Minimizing hyperglycemia reduces the risk of fetal abnormalities and adverse perinatal outcomes, yet disappointingly does not always ameliorate excess fetal growth. This has short-term consequences for mothers and babies as well as long-term implications for adverse metabolic health in future life. Evidence derived from CGM suggests that acute glycemic fluctuations, in addition to chronic hyperglycemia, may

contribute to fetal hyperinsulinemia and accelerated fetal growth; thus, reducing GV could prevent excess fetal weight gain, but large prospective studies are required to confirm this. Moreover, the utility of HbA<sub>1c</sub> in type 1 diabetes and pregnancy is unclear, and the use of short-term glycemic markers may play a role in identifying women with type 1 diabetes at risk for delivering LGA neonates. Prepregnancy maternal obesity and gestational weight gain in type 1 diabetes exacerbate the effects of maternal hyperglycemia on fetal overgrowth, and more interventional studies are needed to determine whether strategies to reduce weight before pregnancy or minimize gestational weight gain ameliorates the risk of LGA neonates. Furthermore, decreasing maternal triglyceride levels in both early and late pregnancy could lower the transfer of fatty acids across the placenta, thereby reducing fetal overgrowth. Type 1 diabetes in pregnancy should be viewed as a dysregulated metabolic state that requires a multifaceted approach to the management of maternal risk factors. Although obtaining target glucose levels before and during pregnancy remains important, optimal management of type 1 diabetes in pregnancy challenges us to move beyond a glucose-centric approach.

**Duality of Interest.** No potential conflicts of interest relevant to this article were reported.  
**Author Contributions.** R.T.M. carried out the initial literature searches and drafted the first version of the manuscript. S.J.G., S.L.H., and G.R.F. interpreted the results and provided intellectual content. R.T.M., S.J.G., S.L.H., and G.R.F. were involved in the design of the review, contributed to and edited the manuscript, and approved the final version before submission. R.T.M. is the guarantor of this work and, as such, had full access to all the data in the study and takes responsibility for the integrity of the data and the accuracy of the data analysis.

## References

- Owens LA, Egan AM, Carmody L, Dunne F. Ten years of optimizing outcomes for women with type 1 and type 2 diabetes in pregnancy—the Atlantic DIP experience. *J Clin Endocrinol Metab* 2016;101:1598–1605
- Persson M, Cnattingius S, Wikström AK, Johansson S. Maternal overweight and obesity and risk of pre-eclampsia in women with type 1 diabetes or type 2 diabetes. *Diabetologia* 2016; 59:2099–2105
- Maresh MJ, Holmes VA, Patterson CC, et al.; Diabetes and Pre-eclampsia Intervention Trial Study Group. Glycemic targets in the second and third trimester of pregnancy for women with type 1 diabetes. *Diabetes Care* 2015;38:34–42

- Evers IM, de Valk HW, Mol BW, ter Braak EW, Visser GH. Macrosomia despite good glycaemic control in Type I diabetic pregnancy; results of a nationwide study in The Netherlands. *Diabetologia* 2002;45:1484–1489
- Mackin ST, Nelson SM, Kerstens JJ, et al.; SDRN Epidemiology Group. Diabetes and pregnancy: national trends over a 15 year period. *Diabetologia* 2018;61:1081–1088
- Oken E, Gillman MW. Fetal origins of obesity. *Obes Res* 2003;11:496–506
- Yamamoto JM, Kallas-Koeman MM, Butalia S, Lodha AK, Donovan LE. Large-for-gestational-age (LGA) neonate predicts a 2.5-fold increased odds of neonatal hypoglycaemia in women with type 1 diabetes. *Diabetes Metab Res Rev* 2017;33:e2824
- Colstrup M, Mathiesen ER, Damm P, Jensen DM, Ringholm L. Pregnancy in women with type 1 diabetes: have the goals of St. Vincent declaration been met concerning foetal and neonatal complications? *J Matern Fetal Neonatal Med* 2013;26: 1682–1686
- Pedersen J. Weight and length at birth of infants of diabetic mothers. *Acta Endocrinol (Copenh)* 1954;16:330–342
- Desoye G, Nolan CJ. The fetal glucose steal: an underappreciated phenomenon in diabetic pregnancy. *Diabetologia* 2016;59:1089–1094
- Poissonnet CM, Burdi AR, Bookstein FL. Growth and development of human adipose tissue during early gestation. *Early Hum Dev* 1983;8:1–11
- Persson B, Hanson U. Fetal size at birth in relation to quality of blood glucose control in pregnancies complicated by pregestational diabetes mellitus. *Br J Obstet Gynaecol* 1996;103: 427–433
- Cyganek K, Skupien J, Katra B, et al. Risk of macrosomia remains glucose-dependent in a cohort of women with pregestational type 1 diabetes and good glycemic control. *Endocrine* 2017;55:447–455
- Ring S, Glastras SJ, Hocking SL, et al. Excess foetal growth and glycaemic control in type 1 diabetes and pregnancy. *Diabetes Metab*. 11 January 2018 [Epub ahead of print]. DOI: 10.1016/j.diabet.2018.01.002
- Law GR, Ellison GT, Secher AL, et al. Analysis of continuous glucose monitoring in pregnant women with diabetes: distinct temporal patterns of glucose associated with large-for-gestational-age infants. *Diabetes Care* 2015;38:1319–1325
- Nielsen LR, Ekbohm P, Damm P, et al. HbA<sub>1c</sub> levels are significantly lower in early and late pregnancy. *Diabetes Care* 2004;27:1200–1201
- Damm P, Mersebach H, Råstam J, et al. Poor pregnancy outcome in women with type 1 diabetes is predicted by elevated HbA<sub>1c</sub> and spikes of high glucose values in the third trimester. *J Matern Fetal Neonatal Med* 2014;27:149–154
- Feig DS, Donovan LE, Corcoy R, et al.; CONCEPTT Collaborative Group. Continuous glucose monitoring in pregnant women with type 1 diabetes (CONCEPTT): a multicentre international randomised controlled trial. *Lancet* 2017;390: 2347–2359
- Stewart ZA, Wilinska ME, Hartnell S, et al. Closed-loop insulin delivery during pregnancy in women with type 1 diabetes. *N Engl J Med* 2016; 375:644–654
- Metzger BE, Lowe LP, Dyer AR, et al.; HAPO Study Cooperative Research Group. Hyperglycemia

- and adverse pregnancy outcomes. *N Engl J Med* 2008;358:1991–2002
21. Kerssen A, de Valk HW, Visser GH. The continuous glucose monitoring system during pregnancy of women with type 1 diabetes mellitus: accuracy assessment. *Diabetes Technol Ther* 2004;6:645–651
  22. Dalfrà MG, Chillemi NC, Di Cianni G, et al. Glucose fluctuations during gestation: an additional tool for monitoring pregnancy complicated by diabetes. *Int J Endocrinol* 2013;2013:279021
  23. Kerssen A, de Valk HW, Visser GH. Day-to-day glucose variability during pregnancy in women with type 1 diabetes mellitus: glucose profiles measured with the continuous glucose monitoring system. *BJOG* 2004;111:919–924
  24. Murphy HR, Rayman G, Duffield K, et al. Changes in the glycemic profiles of women with type 1 and type 2 diabetes during pregnancy. *Diabetes Care* 2007;30:2785–2791
  25. Taslimi MM, Navabi K, Acosta R, Helmer A, El-Sayed YY. Concealed maternal blood glucose excursions correlate with birth weight centile. *J Diabetes Sci Technol* 2008;2:456–460
  26. Dalfrà MG, Sartore G, Di Cianni G, et al. Glucose variability in diabetic pregnancy. *Diabetes Technol Ther* 2011;13:853–859
  27. McGrath RT, Glastras SJ, Seeho SK, Scott ES, Fulcher GR, Hocking SL. Association between glycemic variability, HbA<sub>1c</sub>, and large-for-gestational-age neonates in women with type 1 diabetes. *Diabetes Care* 2017;40:e98–e100
  28. Lee JE. Alternative biomarkers for assessing glycemic control in diabetes: fructosamine, glycated albumin, and 1,5-anhydroglucitol. *Ann Pediatr Endocrinol Metab* 2015;20:74–78
  29. Nowak N, Skupien J, Cyganek K, Matejko B, Malecki MT. 1,5-Anhydroglucitol as a marker of maternal glycaemic control and predictor of neonatal birthweight in pregnancies complicated by type 1 diabetes mellitus. *Diabetologia* 2013;56:709–713
  30. Delaney SS, Coley RY, Brown Z. 1,5-Anhydroglucitol: a new predictor of neonatal birth weight in diabetic pregnancies. *Eur J Obstet Gynecol Reprod Biol* 2015;189:55–58
  31. Sugawara D, Sato H, Ichihashi K, Nagai K, Kawano A. Glycated albumin level during late pregnancy as a predictive factor for neonatal outcomes of women with diabetes. *J Matern Fetal Neonatal Med* 2018;31:2007–2012
  32. Kyne-Grzebalski D, Wood L, Marshall SM, Taylor R. Episodic hyperglycaemia in pregnant women with well-controlled type 1 diabetes mellitus: a major potential factor underlying macrosomia. *Diabet Med* 1999;16:702–706
  33. Carver TD, Anderson SM, Aldoretta PW, Hay WW Jr. Effect of low-level basal plus marked “pulsatile” hyperglycemia on insulin secretion in fetal sheep. *Am J Physiol* 1996;271:E865–E871
  34. Saisho Y. Glycemic variability and oxidative stress: a link between diabetes and cardiovascular disease? *Int J Mol Sci* 2014;15:18381–18406
  35. Peuchant E, Brun JL, Rigalleau V, et al. Oxidative and antioxidative status in pregnant women with either gestational or type 1 diabetes. *Clin Biochem* 2004;37:293–298
  36. Zawiejska A, Wender-Ozegowska E, Pietryga M, Brązert J. Maternal endothelial dysfunction and its association with abnormal fetal growth in diabetic pregnancy. *Diabet Med* 2011;28:692–698
  37. Jensen DM, Damm P, Sørensen B, et al. Pregnancy outcome and prepregnancy body mass index in 2459 glucose-tolerant Danish women. *Am J Obstet Gynecol* 2003;189:239–244
  38. Zhang C, Hediger ML, Albert PS, et al. Association of maternal obesity with longitudinal ultrasonographic measures of fetal growth: findings from the NICHD fetal growth studies-singletons. *JAMA Pediatr* 2018;172:24–31
  39. Jansson T, Cetin I, Powell TL, et al. Placental transport and metabolism in fetal overgrowth—a workshop report. *Placenta* 2006;27(Suppl. A):S109–S113
  40. Sewell MF, Huston-Presley L, Super DM, Catalano P. Increased neonatal fat mass, not lean body mass, is associated with maternal obesity. *Am J Obstet Gynecol* 2006;195:1100–1103
  41. Abell SK, Boyle JA, de Courten B, et al. Contemporary type 1 diabetes pregnancy outcomes: impact of obesity and glycaemic control. *Med J Aust* 2016;205:162–167
  42. Persson M, Pasupathy D, Hanson U, Westgren M, Norman M. Pre-pregnancy body mass index and the risk of adverse outcome in type 1 diabetic pregnancies: a population-based cohort study. *BMJ Open* 2012;2:e000601
  43. Egan AM, Denny MC, Al-Ramli W, Heerey A, Avalos G, Dunne F. ATLANTIC-DIP: excessive gestational weight gain and pregnancy outcomes in women with gestational or pregestational diabetes mellitus. *J Clin Endocrinol Metab* 2014;99:212–219
  44. Klemetti M, Nuutila M, Tikkanen M, Kari MA, Hiilesmaa V, Teramo K. Trends in maternal BMI, glycaemic control and perinatal outcome among type 1 diabetic pregnant women in 1989–2008. *Diabetologia* 2012;55:2327–2334
  45. Wong SF, Chan FY, Oats JJ, McIntyre DH. Fetal growth spurt and pregestational diabetic pregnancy. *Diabetes Care* 2002;25:1681–1684
  46. Ray JG, Vermeulen MJ, Shapiro JL, Kenshole AB; Diabetes Endocrine Pregnancy Outcome Study in Toronto. Maternal and neonatal outcomes in pregestational and gestational diabetes mellitus, and the influence of maternal obesity and weight gain: the DEPOSIT study. *QJM* 2001;94:347–356
  47. Nielsen GL, Dethlefsen C, Møller M, Sørensen HT. Maternal glycated haemoglobin, pre-gestational weight, pregnancy weight gain and risk of large-for-gestational-age babies: a Danish cohort study of 209 singleton type 1 diabetic pregnancies. *Diabet Med* 2007;24:384–387
  48. Rasmussen KM, Catalano PM, Yaktine AL. New guidelines for weight gain during pregnancy: what obstetrician/gynecologists should know. *Curr Opin Obstet Gynecol* 2009;21:521–526
  49. Kawakita T, Bowers K, McWhorter K, et al. Characterizing gestational weight gain according to Institute of Medicine guidelines in women with type 1 diabetes mellitus: association with maternal and perinatal outcome. *Am J Perinatol* 2016;33:1266–1272
  50. Djelmis J, Blajić J, Buković D, et al. Glycosylated hemoglobin and fetal growth in normal, gestational and insulin dependent diabetes mellitus pregnancies. *Coll Antropol* 1997;21:621–629
  51. Secher AL, Parellada CB, Ringholm L, Asbjörnsdóttir B, Damm P, Mathiesen ER. Higher gestational weight gain is associated with increasing offspring birth weight independent of maternal glycemic control in women with type 1 diabetes. *Diabetes Care* 2014;37:2677–2684
  52. Siegel AM, Tita A, Biggio JR, Harper LM. Evaluating gestational weight gain recommendations in pregestational diabetes. *Am J Obstet Gynecol* 2015;213:563.e1–563.e5
  53. Morrens A, Verhaeghe J, Vanhole C, Devlieger R, Mathieu C, Benhalima K. Risk factors for large-for-gestational age infants in pregnant women with type 1 diabetes. *BMC Pregnancy Childbirth* 2016;16:162
  54. Feghali MN, Khoury JC, Timofeev J, Shveiky D, Driggers RW, Miodovnik M. Asymmetric large for gestational age newborns in pregnancies complicated by diabetes mellitus: is maternal obesity a culprit? *J Matern Fetal Neonatal Med* 2012;25:32–35
  55. Hoegsberg B, Gruppuso PA, Coustan DR. Hyperinsulinemia in macrosomic infants of nondiabetic mothers. *Diabetes Care* 1993;16:32–36
  56. Catalano PM, Presley L, Minium J, Hauguelde Mouzon S. Fetuses of obese mothers develop insulin resistance in utero. *Diabetes Care* 2009;32:1076–1080
  57. Kalkhoff RK. Impact of maternal fuels and nutritional state on fetal growth. *Diabetes* 1991;40(Suppl. 2):61–65
  58. Kalkhoff RK, Kandaraki E, Morrow PG, Mitchell TH, Kelber S, Borkowf HI. Relationship between neonatal birth weight and maternal plasma amino acid profiles in lean and obese nondiabetic women and in type I diabetic pregnant women. *Metabolism* 1988;37:234–239
  59. Vidakovic AJ, Jaddoe VW, Gishti O, et al. Body mass index, gestational weight gain and fatty acid concentrations during pregnancy: the Generation R Study. *Eur J Epidemiol* 2015;30:1175–1185
  60. Lowe WL Jr, Bain JR, Nodzenski M, et al.; HAPO Study Cooperative Research Group. Maternal BMI and glycemia impact the fetal metabolome. *Diabetes Care* 2017;40:902–910
  61. Jansson N, Rosario FJ, Gaccioli F, et al. Activation of placental mTOR signaling and amino acid transporters in obese women giving birth to large babies. *J Clin Endocrinol Metab* 2013;98:105–113
  62. Scifres CM, Chen B, Nelson DM, Sadovsky Y. Fatty acid binding protein 4 regulates intracellular lipid accumulation in human trophoblasts. *J Clin Endocrinol Metab* 2011;96:E1083–E1091
  63. Vernini JM, Moreli JB, Costa RA, Negrato CA, Rudge MV, Calderon IM. Maternal adipokines and insulin as biomarkers of pregnancies complicated by overweight and obesity. *Diabetol Metab Syndr* 2016;8:68
  64. Higgins MF, Russell NM, Brazil DP, Firth RG, McAuliffe FM. Fetal and maternal leptin in pregestational diabetic pregnancy. *Int J Gynaecol Obstet* 2013;120:169–172
  65. Maffei M, Volpe L, Di Cianni G, et al. Plasma leptin levels in newborns from normal and diabetic mothers. *Horm Metab Res* 1998;30:575–580
  66. Lindsay RS, Nelson SM, Walker JD, et al. Programming of adiposity in offspring of mothers with type 1 diabetes at age 7 years. *Diabetes Care* 2010;33:1080–1085
  67. Kadakia R, Ma M, Josefson JL. Neonatal adiposity increases with rising cord blood IGF-1 levels. *Clin Endocrinol (Oxf)* 2016;85:70–75

68. Murphy HR, Roland JM, Skinner TC, et al. Effectiveness of a regional prepregnancy care program in women with type 1 and type 2 diabetes: benefits beyond glycemic control. *Diabetes Care* 2010;33:2514–2520
69. Herrera E, Ortega-Senovilla H. Lipid metabolism during pregnancy and its implications for fetal growth. *Curr Pharm Biotechnol* 2014;15:24–31
70. Toescu V, Nuttall SL, Martin U, et al. Changes in plasma lipids and markers of oxidative stress in normal pregnancy and pregnancies complicated by diabetes. *Clin Sci (Lond)* 2004;106:93–98
71. Gutaj P, Wender-Ożegowska E, Brązert J. Maternal lipids associated with large-for-gestational-age birth weight in women with type 1 diabetes: results from a prospective single-center study. *Arch Med Sci* 2017;13:753–759
72. Göbl CS, Handisurya A, Klein K, et al. Changes in serum lipid levels during pregnancy in type 1 and type 2 diabetic subjects. *Diabetes Care* 2010;33:2071–2073
73. Lindegaard ML, Damm P, Mathiesen ER, Nielsen LB. Placental triglyceride accumulation in maternal type 1 diabetes is associated with increased lipase gene expression. *J Lipid Res* 2006;47:2581–2588
74. Radaelli T, Lepercq J, Varastehpour A, Basu S, Catalano PM, Hauguel-De Mouzon S. Differential regulation of genes for fetoplacental lipid pathways in pregnancy with gestational and type 1 diabetes mellitus. *Am J Obstet Gynecol* 2009;201:209.e1–209.e10
75. Kilby MD, Neary RH, Mackness MI, Durrington PN. Fetal and maternal lipoprotein metabolism in human pregnancy complicated by type 1 diabetes mellitus. *J Clin Endocrinol Metab* 1998;83:1736–1741
76. Szabo AJ, Szabo O. Placental free-fatty-acid transfer and fetal adipose-tissue development: an explantation of fetal adiposity in infants of diabetic mothers. *Lancet* 1974;2:498–499
77. Dubé E, Gravel A, Martin C, et al. Modulation of fatty acid transport and metabolism by maternal obesity in the human full-term placenta. *Biol Reprod* 2012;87:14, 1–11
78. Khoury J, Henriksen T, Christophersen B, Tonstad S. Effect of a cholesterol-lowering diet on maternal, cord, and neonatal lipids, and pregnancy outcome: a randomized clinical trial. *Am J Obstet Gynecol* 2005;193:1292–1301