



Maternal Gestational Diabetes Mellitus and Newborn DNA Methylation: Findings From the Pregnancy and Childhood Epigenetics Consortium

Diabetes Care 2020;43:98–105 | <https://doi.org/10.2337/dc19-0524>

Caitlin G. Howe,¹ Bianca Cox,² Ruby Fore,³ James Jungius,^{4,5} Tuomas Kvist,⁶ Samantha Lent,³ Harriet E. Miles,^{4,5} Lucas A. Salas,^{7,8,9} Sheryl Rifas-Shiman,⁶ Anne P. Starling,^{10,11} Paul Yousefi,^{3,4} Christine Ladd-Acosta,¹² Andrea Baccarelli,¹³ Elisabeth B. Binder,^{14,15} Vaia Lida Chatzi,^{1,16,17} Darina Czamara,¹⁴ Dana Dabelea,^{10,11,18} Dawn L. DeMeo,¹⁹ Akram Ghantous,²⁰ Zdenko Herceg,²⁰ Eero Kajantie,^{21,22,23,24} Jari M.T. Lahti,⁵ Debbie A. Lawlor,^{4,5,25} Augusto Litonjua,¹⁹ Tim S. Nawrot,^{2,26} Ellen A. Nohr,²⁷ Emily Oken,⁶ Costanza Pizzi,²⁸ Michelle Plusquin,² Katri Räikkönen,⁵ Caroline L. Relton,^{4,5,25} Gemma C. Sharp,³ Thorkild I.A. Sørensen,^{4,29,30} Jordi Sunyer,^{8,9,31} Martine Vrijheid,^{8,9,31} Weiming Zhang,^{11,32} Marie-France Hivert,^{3,33} and Carrie V. Breton¹

OBJECTIVE

Maternal gestational diabetes mellitus (GDM) has been associated with adverse outcomes in the offspring. Growing evidence suggests that the epigenome may play a role, but most previous studies have been small and adjusted for few covariates. The current study meta-analyzed the association between maternal GDM and cord blood DNA methylation in the Pregnancy and Childhood Epigenetics (PACE) consortium.

RESEARCH DESIGN AND METHODS

Seven pregnancy cohorts (3,677 mother-newborn pairs [317 with GDM]) contributed results from epigenome-wide association studies, using DNA methylation data acquired by the Infinium HumanMethylation450 BeadChip array. Associations between GDM and DNA methylation were examined using robust linear regression, with adjustment for potential confounders. Fixed-effects meta-analyses were performed using METAL. Differentially methylated regions (DMRs) were identified by taking the intersection of results obtained using two regional approaches: comb-p and DMRcate.

RESULTS

Two DMRs were identified by both comb-p and DMRcate. Both regions were hypomethylated in newborns exposed to GDM in utero compared with control subjects. One DMR (chr 1: 248100345–248100614) was located in the *OR2L13* promoter, and the other (chr 10: 135341870–135342620) was located in the gene body of *CYP2E1*. Individual CpG analyses did not reveal any differentially methylated loci based on a false discovery rate-adjusted *P* value threshold of 0.05.

CONCLUSIONS

Maternal GDM was associated with lower cord blood methylation levels within two regions, including the promoter of *OR2L13*, a gene associated with autism spectrum disorder, and the gene body of *CYP2E1*, which is upregulated in type 1 and type 2 diabetes. Future studies are needed to understand whether these associations are causal and possible health consequences.

¹Department of Preventive Medicine, Keck School of Medicine, University of Southern California, Los Angeles, CA

²Center for Environmental Sciences, Hasselt University, Hasselt, Belgium

³Department of Population Medicine, Harvard Medical School and Harvard Pilgrim Health Care Institute, Boston, MA

⁴MRC Integrative Epidemiology Unit at the University of Bristol, Bristol, U.K.

⁵Population Health Science, Bristol Medical School, University of Bristol, Bristol, U.K.

⁶Department of Psychology and Logopedics, University of Helsinki, Helsinki, Finland

⁷Department of Epidemiology, Geisel School of Medicine at Dartmouth, Lebanon, NH

⁸ISGlobal, Barcelona, Spain

⁹Universitat Pompeu Fabra, Barcelona, Spain

¹⁰Department of Epidemiology, Colorado School of Public Health, University of Colorado Anschutz Medical Campus, Aurora, CO

¹¹Lifecourse Epidemiology of Adiposity and Diabetes Center, University of Colorado Anschutz Medical Campus, Aurora, CO

¹²Department of Epidemiology, Bloomberg School of Public Health, Johns Hopkins University, Baltimore, MD

¹³Laboratory of Precision Environmental Biosciences, Columbia University Mailman School of Public Health, New York, NY

¹⁴Department of Translational Research in Psychiatry, Max Planck Institute of Psychiatry, Munich, Germany

¹⁵Department of Psychiatry and Behavioral Sciences, Emory University School of Medicine, Atlanta, GA

¹⁶Department of Social Medicine, University of Crete, Heraklion, Crete, Greece

Gestational diabetes mellitus (GDM) is one of the most common pregnancy complications, with prevalence estimates ranging from 2% to 25% depending on the screening and diagnostic criteria used and the population examined (1,2). In addition to the adverse pregnancy and delivery outcomes associated with GDM, which can include preeclampsia, macrosomia, and shoulder dystocia (3), women diagnosed with GDM are four times more likely to have children who develop metabolic syndrome later in life and twice as likely to have children who become overweight or obese (4). There is also evidence that maternal GDM during pregnancy alters fetal growth trajectories (5) and adversely affects neurodevelopment (6,7). Thus, understanding the molecular changes related to prenatal exposure to GDM could have widespread implications for children's health.

One potential mechanism underlying such a diverse array of GDM-associated outcomes is epigenetic dysregulation. In support of this, a growing number of studies have observed associations between GDM and cord blood DNA methylation patterns (8–17). However, the majority of studies have been small (e.g., <100 participants or <30 GDM cases), adjusted for few if any covariates, and used lenient or no adjustment for multiple testing (8–10,12–15,17), which may have contributed to a lack of replication of results across studies.

There has therefore been a call for research on GDM and offspring DNA

methylation within larger studies (18). The current study conducted a meta-analysis of results from epigenome-wide association studies (EWAS) of GDM and cord blood DNA methylation patterns from seven cohorts participating in the Pregnancy and Childhood Epigenetics (PACE) consortium (19). Additionally, we conducted a look-up in our meta-analysis results for CpGs that were previously identified as differentially methylated in prior publications.

RESEARCH DESIGN AND METHODS

Participating Cohorts

All cohorts in the PACE consortium (19) were invited to participate in the current meta-analysis. Seven cohorts, representing eight countries, participated, contributing a total of 317 GDM case and 3,360 control subjects (Table 1 and Supplementary Table 1). These cohorts are the Avon Longitudinal Study of Parents and Children (ALSPAC), the Genome-Wide Population-Based Association Study of Extremely Overweight Young Adults (GOYA), the Healthy Start Study, Proyecto Infancia y Medio Ambiente (INMA), the Prediction and Prevention of Preeclampsia and Intrauterine Growth Restriction (PREDO) study, Project Viva, and a pooled analysis of three cohorts: the Rhea Study (RHEA), the ENVIRONMENTAL influence ON early AGEing (ENVIRONMENTAGE) study, and the Piccolipiù study (RHEA/ENVIRONMENTAGE/Piccolipiù). Cohort details are described in the Supplementary Data. Each cohort received ethics approval and informed

consent from participants prior to data collection, and the current meta-analysis was approved by the Health Sciences Institutional Review Board of the University of Southern California.

GDM

Participants diagnosed with type 1 or type 2 diabetes prior to the index pregnancy were excluded from analyses. The criteria used to classify GDM cases are summarized by cohort in Table 1 and are also described in more detail in the Supplementary Data. For all cohorts except Piccolipiù, GDM was primarily classified based on information that was abstracted from medical records. Due to a lack of international consensus, the criteria used to classify GDM differ by country and have changed over time. In the U.S. and some European countries, GDM is often diagnosed using a two-step approach, which entails universal screening with a 50-g glucose challenge test, followed by a 100-g 3-h oral glucose tolerance test (OGTT) for those who test positive (20). In contrast, some European countries have adopted the International Association of Diabetes and Pregnancy Study Groups (IADPSG) guidelines (21), which recommend a one-step approach, in which a 75-g 2-h OGTT is performed for all women at 24–28 weeks' gestation. Furthermore, some countries use a selective approach and only administer GDM diagnostic tests to women with traditional risk factors. GDM cases

¹⁷Department of Genetics and Cell Biology, Maastricht University, Maastricht, the Netherlands

¹⁸Department of Pediatrics, School of Medicine, University of Colorado Anschutz Medical Campus, Aurora, CO

¹⁹Channing Division of Network Medicine, Brigham and Women's Hospital, Harvard Medical School, Boston, MA

²⁰Epigenetics Group, International Agency for Research on Cancer, Lyon, France

²¹National Institute for Health and Welfare, Helsinki, Finland

²²Research Unit for Pediatrics, Dermatology, Clinical Genetics, Obstetrics and Gynecology, Medical Research Center Oulu, Oulu University Hospital and University of Oulu, Oulu, Finland

²³Department of Clinical and Molecular Medicine, Norwegian University for Science and Technology, Trondheim, Norway

²⁴Children's Hospital, Helsinki University Hospital and University of Helsinki, Helsinki, Finland

²⁵Bristol NIHR Biomedical Research Centre, Bristol, U.K.

²⁶Department of Public Health and Primary Care, Leuven University, Leuven, Belgium

²⁷Research Unit for Gynaecology and Obstetrics, Department of Clinical Research, University of Southern Denmark, Odense, Denmark

²⁸Department of Medical Sciences, University of Turin, Turin, Italy

²⁹Section on Metabolic Genetics, Novo Nordisk Foundation Center for Basic Metabolic Research, Faculty of Health and Medical Sciences, University of Copenhagen, Copenhagen, Denmark

³⁰Section of Epidemiology, Department of Public Health, Faculty of Health and Medical Sciences, University of Copenhagen, Copenhagen, Denmark

³¹CIBER Epidemiología y Salud Pública, Madrid, Spain

³²Department of Biostatistics and Informatics, Colorado School of Public Health, University of Colorado Anschutz Medical Campus, Aurora, CO

³³Diabetes Unit, Massachusetts General Hospital, Boston, MA

Corresponding author: Caitlin Howe, caitlin.howe@usc.edu

Received 14 March 2019 and accepted 17 September 2019

This article contains Supplementary Data online at <http://care.diabetesjournals.org/lookup/suppl/doi:10.2337/dc19-0524/-/DC1>.

M.-F.H. and C.V.B. contributed equally to this work.

Where authors are identified as personnel of the International Agency for Research on Cancer/World Health Organization, the authors alone are responsible for the views expressed in this article, and they do not necessarily represent the decisions, policy, or views of the International Agency for Research on Cancer/World Health Organization.

© 2019 by the American Diabetes Association. Readers may use this article as long as the work is properly cited, the use is educational and not for profit, and the work is not altered. More information is available at <http://www.diabetesjournals.org/content/license>.

Table 1—Characteristics of participating cohorts*

Cohort	Location	Participant enrollment years	GDM screening approach	GDM classification criteria and source of information	GDM case subjects (n)	Control subjects (n)
ALSPAC	U.K.	1991–1992	Selective	Physician-diagnosed GDM (medical records)	22	867
GOYA	Denmark	1996–2002	Selective	Physician-diagnosed GDM based on a one-step 75-g OGTT (medical records) + self-report	28	404
Healthy Start Study	U.S.	2009–2014	Universal	Physician-diagnosed GDM based on a two-step 100-g OGTT, Carpenter-Coustan criteria (medical records)	32	534
INMA	Spain	2004–2007	Selective	Two-step 100-g OGTT, Carpenter-Coustan criteria (medical records)	12	144
PREDO	Finland	2006–2010	Universal	One-step 75-g OGTT, IADPSG criteria (medical records)	180	600
RHEA/ENVIRONAGE/ Piccolipiù (pooled)	Greece/ Belgium/Italy	2007–2008/ 2010–ongoing/ 2011–2015	Universal/ universal/ universal	Two-step 100-g OGTT, Carpenter-Coustan criteria (medical records)/two-step 100-g OGTT, Carpenter-Coustan criteria (medical records)/self-report	20	352
Project Viva	U.S.	1999–2002	Universal	Two-step 100-g OGTT, Carpenter-Coustan criteria (medical records)	23	459

*Additional details on GDM classification and other characteristics of each cohort are included in Supplementary Data.

from the Healthy Start Study, Project Viva, RHEA, and ENVIRONAGE were classified based on the two-step approach, using the Carpenter-Coustan criteria (22). GDM cases from PREDO were classified based on the IADPSG one-step approach. Piccolipiù identified GDM cases based on self-reported questionnaire data collected at delivery, and all but one case was confirmed using medical record data (IADPSG one-step approach [21]). GDM cases from INMA were diagnosed using a selective screening approach, where women at high risk for GDM were administered a glucose challenge test, followed by a diagnostic OGTT, using the Carpenter-Coustan criteria (22). GDM cases from ALSPAC and GOYA were diagnosed based on the practices at the time in the U.K. and Denmark, respectively, in which diagnostic tests were only performed for women 1) at high risk for GDM based on established risk factors or 2) with glycosuria (23,24). Given anticipated underreporting of GDM in the medical records, information from telephone interviews was also used to classify GDM cases in GOYA.

Methylation Measurements

Cord blood DNA was bisulfite converted using an EZ-96 DNA Methylation Kit (Zymo

Research Corporation, Irvine). Each cohort measured DNA methylation using the Infinium HumanMethylation450 BeadChip array (Illumina, San Diego, CA), either at Illumina or in cohort-specific laboratories, and each cohort conducted its own quality control and normalization of data, as described in Supplementary Data. Since the PACE consortium has observed that extreme outliers (greater than three times the interquartile range) can have a large impact on results, they were removed prior to analyses. For all analyses, normalized, untransformed β values were evaluated as outcomes.

Cohort-Specific Statistical Analyses

Cohorts ran independent EWAS models according to the same analysis plan, using robust linear regression, as this method controls for possible heteroscedasticity and potential outliers. Only singleton pregnancies were included in analyses. GDM was modeled as the exposure of interest, and the cord blood DNA methylation level at each CpG was modeled as the outcome. Regression models were adjusted for hypothesized confounders, which included newborn's sex, maternal age, maternal education level, maternal BMI (prepregnancy or early pregnancy),

maternal smoking status during pregnancy (ever vs. never), and maternal genetic ancestry (if available) or maternal race/ethnicity. Cohort-specific details for covariate assessment are described in Supplementary Data. First, we adjusted only for this baseline set of covariates (results are presented in Supplementary Data), such that results could be compared with previous studies, which have generally not accounted for cord blood cell heterogeneity. However, our final model was additionally adjusted for cord blood cell fractions, including B cells, CD8⁺ T cells, CD4⁺ T cells, granulocytes, natural killer cells, monocytes, and nucleated red blood cells, which were estimated using a cord blood reference panel (25). We also examined results from two of the larger participating cohorts (PREDO and Project Viva) after additional adjustment for parity. Since results were very similar (Supplementary Tables 2 and 3), parity was not included in the final model.

Meta-analyses

METAL (26) was used to conduct inverse variance-weighted fixed-effects meta-analyses, using results from the cohort-specific analyses. Control probes, probes mapping to the X and Y chromosomes,

and probes that have been shown to cross-hybridize or that target polymorphic CpGs or contain single nucleotide polymorphisms (SNPs) at the single base pair (bp) extension (27) were excluded. A total of 380,878 CpGs were therefore included in the meta-analyses. Probes were annotated to hg19 using the IlluminaHumanMethylation450kanno.ilmn12.hg19 R package (28). After meta-analyses were complete, a second analyst ran shadow meta-analyses to rule out potential human error. CpGs were considered differentially methylated if the false discovery rate (FDR)-adjusted P value (P_{FDR}) was <0.05 .

Potential heterogeneity between studies was assessed using the Cochran Q statistic and I^2 . Additionally, leave-one-out meta-analyses (i.e., comparison of results after the sequential removal of one cohort and a meta-analysis of the remaining six cohorts) were conducted to evaluate the influence of each individual cohort on the results.

Differentially methylated regions (DMRs) were identified from meta-analysis results by taking the intersection of DMRs identified using two different software programs: comb-p (29) and DMRcate (30). comb-p identifies regions enriched for low P values, uses the Stouffer-Liptak method to correct for autocorrelation, and adjusts for multiple testing using the Sidak correction (29). DMRcate calculates two smoothed estimates for each chromosome (one weighted by F statistics and one not) and uses a Satterthwaite approximation to compare these estimates; it then adjusts for multiple testing using the FDR method (30). These approaches were selected because they can be applied to meta-analysis results. Windows of 500 and 1,000 bp were compared for each approach. For comb-p, a P value threshold of 1×10^{-3} was used to specify the start of each region, and a distance of 200 bp was selected for extending the region. For DMRcate, the default settings were used, as recommended (30), and FDR thresholds of 0.05 and 0.01 were compared.

Sensitivity Analyses

Since the seven participating cohorts represent different geographic regions and differ in the timing of participant recruitment and the criteria used to classify GDM cases, we ran a series of

sensitivity meta-analyses. We compared meta-analysis results after restricting to 1) cohorts with GDM cases identified by selective versus universal screening, 2) cohorts with GDM cases identified using a one-step 75-g versus a two-step 100-g OGTT, 3) European versus U.S. cohorts, and 4) cohorts that recruited participants prior to 2004 versus after 2004.

Look-up Analyses

In an effort to replicate previous findings, a look-up of CpGs previously identified as differentially methylated by GDM status was conducted within results from the meta-analyses (both with and without adjustment for estimated cell proportions). Relevant studies were identified in PubMed using the following search terms: Gestational diabetes AND DNA methylation. We focused on studies that 1) were not included in the current meta-analyses, 2) included >10 GDM cases, 3) measured DNA methylation in cord blood using the Infinium HumanMethylation450K, MethylationEPIC, or HumanMethylation27 BeadChip array, 4) adjusted for multiple testing using any method, and 5) provided effect estimates and P values for individual CpGs. Two studies met these criteria (9,12). These studies collectively reported a total of 110 differentially methylated CpGs, none of which were common. Additionally, nine CpGs within two genes (*MEST* and *NR3C1*) that were identified as differentially methylated by GDM status in both cord blood and placenta in a previous candidate gene study (11), which are represented on the 450K array, were evaluated. Of these 119 CpGs, 32 were cross-reactive or polymorphic or the CpG probe contained a SNP at the single bp extension (27). These 32 CpGs were therefore excluded, leaving a total of 87 CpGs for the look-up analyses.

RESULTS

Study Characteristics

Characteristics of participating studies are shown in Table 1 and Supplementary Table 1. The number (%) of GDM cases per study ranged from 12 (7.7%) for INMA to 180 (23.1%) for PREDO. The majority of participants were of European ancestry, and approximately half of the newborns were male ($N = 1,900$ [51.7%]).

Meta-analyses for the Individual CpG Results

Probe numbers and the level of inflation (λ) for individual cohort results are shown in Supplementary Table 4. The λ for the meta-analyses was 1.15. Meta-analysis results are summarized in a Manhattan plot (Fig. 1). No CpGs were identified as differentially methylated by GDM status based on a $P_{\text{FDR}} < 0.05$, but six were identified based on a $P_{\text{FDR}} < 0.10$ (Table 2). While the directions of effect were generally consistent for the Healthy Start Study, INMA, PREDO, Project Viva, and the pooled analysis of RHEA/ENVIRONAGE/Piccolipiù, they often differed for ALSPAC or GOYA (Table 2). For five of the CpGs, there was not strong evidence of heterogeneity ($I^2 < 10.0$, $P_{\text{heterogeneity}} > 0.36$), but for one CpG (cg11723077), there was evidence of moderate heterogeneity ($I^2 = 38.7$, $P = 0.13$). However, effect estimates were similar across the leave-one-out meta-analyses (results shown in Supplementary Fig. 1 and Supplementary Table 5).

Look-up Analysis Results

The full look-up analysis results are presented in Supplementary Tables 6 and 7 within the Supplementary Data. Of the 87 CpGs examined, 4 were differentially methylated (uncorrected $P < 0.05$) in the same direction in the meta-analysis that accounted for cell heterogeneity (Supplementary Table 7). These four CpGs (cg01203331, cg03345925, cg08471713, and cg20507276) were annotated to a total of seven genes: *NOP56*, *SNORD56*, *SNORD57*, *SNORD86*, *ZC3H3*, *MEOX1*, and *OR2L13*, respectively. However, based on the 87 tests conducted, FDR-corrected P values exceeded 0.05 for all of the CpGs evaluated.

DMRs Identified from the Meta-analysis Results

Using individual CpG results from the meta-analyses, comb-p identified five regions that were differentially methylated by GDM status (Supplementary Table 8). comb-p results were the same when either a 500 or 1,000 bp window was used. DMRcate identified two DMRs when using an FDR threshold of 0.10. One DMR was identified when using the 500 bp window (chr 1: 248100407–248100614) and the other when using the 1,000 bp window (chr 10: 135341870–135342620) (Supplementary Table 9).

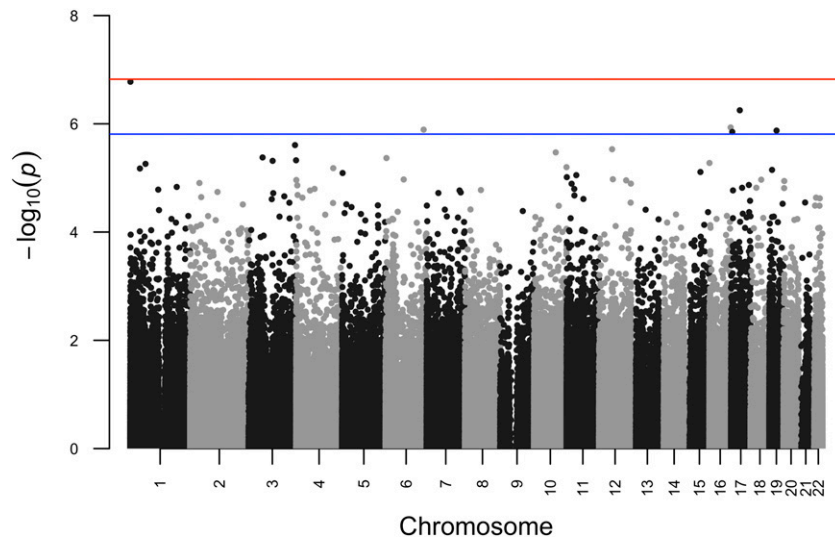


Figure 1—Manhattan plot summarizing results for meta-analyses of the associations between maternal GDM and cord blood DNA methylation. Meta-analyses were run using METAL on results from robust linear regression models, which adjusted for newborn's sex, maternal age, maternal education, maternal BMI (prepregnancy or in early pregnancy), maternal smoking status during pregnancy (ever vs. never), maternal genetic ancestry (if available) or maternal race/ethnicity, and estimated cord blood cell fractions. Blue and red lines indicate $\log_{10}(P\text{values})$ that are equivalent to a P_{FDR} of 0.10 and a P_{FDR} of 0.05, respectively.

Both of these DMRs overlapped two DMRs that had also been identified by comb-p (Table 3). One was located in the promoter region of *OR2L13* and was also annotated to pseudogene *CLK3P2*. The second overlapped a CpG island in the gene body of *CYP2E1*. Percent methylation levels in both regions were lower in the GDM case, compared with control, group, and effect estimates were generally consistent for the individual CpGs contained within each region (Supplementary Fig. 2). DMRcate did not identify any DMRs when using an FDR threshold of 0.05.

Sensitivity Analysis Results

Results were generally similar for the six CpGs, with a $P_{\text{FDR}} < 0.10$, and also for CpGs within the two DMRs identified by comb-p and DMRcate, after restricting to cohorts with GDM cases identified by a one-step 75-g OGTT versus a two-step 100-g OGTT or using selective versus universal screening. They were also generally similar for U.S. versus European cohorts and for cohorts that recruited participants prior to versus after 2004 (Supplementary Figs. 3–5).

CONCLUSIONS

While previous studies have investigated associations between maternal GDM and newborn DNA methylation (8–16), the

majority have been small, used lenient or no adjustment for multiple testing, did not consider regional methylation differences, and adjusted for a limited number of covariates. In particular, few studies have adjusted for cell heterogeneity, an important source of variability in DNA methylation (31). Results have been inconsistent between these previous studies, raising questions of robustness and reproducibility. The current study therefore conducted meta-analyses of EWAS results from seven cohorts (3,677 mother-newborn pairs [317 with GDM]) participating in the PACE consortium (19), which examined associations between GDM and cord blood DNA methylation, after adjustment for a larger number of potential confounders. We evaluated methylation differences at both the regional and individual CpG level.

Using two dimension reduction approaches (comb-p [29] and DMRcate [30]), we identified two regions that are differentially methylated by GDM status. One of the DMRs identified by the meta-analysis (chr 1: 248100276–248100614) is located in the promoter region of *OR2L13*, a gene that codes for an olfactory receptor (9). Methylation levels in this region were lower in cord blood from GDM-exposed, compared with -unexposed, newborns. This finding is consistent with a previous study by

Quilter et al. (9), which observed lower cord blood methylation levels at a CpG located in this DMR (cg20507276) among GDM-exposed newborns. This same CpG has also been identified as differentially methylated in both blood and buccal cells from autism spectrum disorder (ASD) case versus control subjects (32). While the mechanism by which *OR2L13* may contribute to ASD is currently unknown, olfactory dysfunction has been associated with more severe social impairments among individuals with ASD (32). Since children exposed to maternal GDM in utero have a higher risk of developing ASD (6), future investigation into the potential mediating role of *OR2L13* in GDM-associated ASD is merited. Methylation levels in the second DMR (chr 10: 135341933–135342560) were also lower in the GDM case, compared with control, group. This DMR is located in a CpG island within the gene body of *CYP2E1*, which codes for an enzyme that is highly expressed in the liver and metabolizes ethanol, numerous drugs, and certain prototoxicants (33). Although, to our knowledge, the CpGs within this DMR have not previously been associated with in utero exposure to GDM, increased *CYP2E* expression has been observed in peripheral blood from individuals with type 1 and type 2 diabetes (33).

In contrast with the DMR results, we did not identify any individual differentially methylated CpGs when we used a conservative P_{FDR} threshold of 0.05. When we used a more lenient P_{FDR} threshold of 0.10, six individual CpGs (cg00812770, cg11723077, cg22791932, cg17588003, cg11187204, and cg10139436) were identified as differentially methylated by GDM status, none of which had been identified in the previous studies that we reviewed. Three of these CpGs (cg11723077, cg22791932, and cg17588003) were annotated to genes—*SYNJ2*, *ZFPM1*, and *C17orf87*, respectively—and a fourth CpG (cg00812770) was located in a long intergenic noncoding RNA (*LINC01342*). The remaining two CpGs were not annotated to any genes, and the potential consequences of altered methylation at these loci are currently unclear.

The 13 CpGs comprising the two DMRs identified by both comb-p and DMRcate were not identified as differentially methylated in individual CpG meta-analyses, likely due to the greater

statistical power of the DMR approaches. Additionally, the six CpGs identified as differentially methylated based on a $P_{FDR} < 0.10$ in the individual CpG analyses were not identified by either comb-p or DMRcate. It is possible that these six CpGs are false positives, since they did not reach statistical significance after application of a more conservative threshold of $P_{FDR} < 0.05$. However, two of these CpGs (cg11187204 and cg10139436) also resided in intergenic regions that are either CpG poor or sparsely represented on the 450K array, which would have precluded their identification using regional approaches.

In our examination of 87 CpGs that have previously been associated with GDM status (9,11,12), only 4 were found to be differentially methylated in the same direction in the current meta-analysis, based on an uncorrected $P < 0.05$. Since these previous studies were similarly conducted in predominately European populations, differences in race or ethnicity are likely not driving these discrepancies. However, some of the prior findings may be false positives due to small sample sizes, insufficient control for multiple testing, or a lack of adjustment for important confounding factors, such as maternal BMI. Other potential explanations for the lack of replication include differences in exclusion criteria and the fact that these previous studies stratified by fetal sex (9) or GDM treatment type (11,12), which was not feasible for the current meta-analysis.

Importantly, the seven cohorts participating in the current meta-analysis represent eight countries and multiple time periods. Since the criteria used to classify GDM differ by country and have changed across time, the severity of disease among GDM case subjects, and the proportion of control subjects with undiagnosed GDM or hyperglycemia, may have varied between cohorts. Nevertheless, we did not observe evidence of heterogeneity for the majority of meta-analysis results. Furthermore, results were generally similar across a series of sensitivity analyses, which stratified cohorts based on geographic location, time, and the criteria used for GDM classification. It is therefore possible that there may be a linear relationship between maternal glucose levels and cord blood DNA methylation. However, while there is some evidence for this (34), additional studies are needed to determine whether

Table 2—CpGs with a $P_{FDR} < 0.10$ in the meta-analysis of maternal GDM exposure*

CpG	Genomic position	% methylation difference (95% CI) [†]	Direction by cohort [‡]	Raw P value	FDR-corrected P value	Heterogeneity [§]	I^2	Relation to CpG island	Target gene [¶]
cg00812770	chr 1:1073510	0.8 (0.5, 1.1)	+ - + + + + +	1.7×10^{-7}	0.06	0.55	0.0	South shore	LINC01342
cg111723077	chr 6: 158508188	-1.0 (-1.4, -0.6)	- + - - - - -	1.3×10^{-6}	0.09	0.13	38.7	South shore	SYN12
cg22791932	chr 16: 88537374	0.8 (0.4, 1.1)	+ + + - + + +	1.2×10^{-6}	0.09	0.74	0.0	Island	ZFPM1
cg17588003	chr 17: 5138696	-1.4 (-2.0, -0.8)	+ - - - - - -	1.4×10^{-6}	0.09	0.67	0.0	Open sea	C17orf87
cg11187204	chr 17: 36480526	-1.6 (-2.1, -1.0)	+ + - - - - -	5.2×10^{-8}	0.09	0.57	0.0	Open sea	NA
cg10139436	chr 19: 30219558	-0.4 (-0.5, -0.2)	+ + - - - - -	1.3×10^{-6}	0.09	0.36	9.7	South shelf	NA

NA, not applicable. *Results are from inverse variance-weighted fixed-effects meta-analyses, conducted using METAL. Each cohort independently ran robust linear regression models, with adjustment for newborn's sex, maternal age (in years), maternal BMI (early pregnancy or prepregnancy), maternal smoking status during pregnancy, maternal education, maternal genetic ancestry (if available) or maternal race/ethnicity, and estimated proportions of B cells, CD8⁺ T cells, CD4⁺ T cells, granulocytes, natural killer cells, monocytes, and nucleated red blood cells in cord blood. [†]% difference in newborn DNA methylation and 95% CI in comparison of the GDM case group with the control group. [‡]Direction of association between GDM and methylation at the locus of interest by cohort, ordered as follows: ALSPAC, GOYA, the Healthy Start Study, INMA, PREDO, RHEA/ENVIRONMENTAGE/Piccolipiù, Project Viva. [§]The heterogeneity P value and I^2 were calculated by METAL using Cochran Q test for heterogeneity. ^{||}Relation to CpG island from the UCSC Genome Browser, annotated using the Infinium HumanMethylation450K Manifest File (28). [¶]Target gene name(s) from the UCSC Genome Browser, annotated using the Infinium HumanMethylation450K Manifest File (28).

Table 3—DMRs identified by both comb-p and DMRcate*

DMR	CpGs comprising the DMR	Direction of association	Nearby gene(s)	Regulatory feature group/gene group/relation to island
comb-p (500 and 1,000 bp window) chr 1: 248100345–248100614	cg00785941, cg03748376, cg04028570, cg08260406, cg08944170, cg20434529, cg20507276	–	<i>OR2L13</i> , <i>CLK3P2</i>	Promoter-associated/first exon: 5'UTR or TSS200/island or north shore
chr 10: 135342218–135342413	cg10862468, cg25330361	–	<i>CYP2E1</i>	NA/body/island
DMRcate (500 bp window) chr 1: 248100407–248100614	cg00785941, cg03748376, cg04028570, cg08260406, cg08944170, cg20507276	–	<i>OR2L13</i>	Promoter-associated/first exon/5'UTR/island
DMRcate (1,000 bp window) chr 10: 135341870–135342620	cg00321709, cg10862468, cg19469447, cg23400446, cg24530264, cg25330361	–	<i>CYP2E1</i>	Unclassified/body/island

NA, not applicable. UTR, untranslated region. *DMRs were identified from meta-analysis results for individual CpGs, which used results from robust linear regression models that were adjusted for newborn sex, maternal age (in years), maternal BMI (prepregnancy or early pregnancy), maternal education, maternal smoking status during pregnancy (ever vs. never), maternal genetic ancestry (if available) or maternal race/ethnicity, and estimated cord blood cell fractions.

maternal glucose is the main mechanism through which GDM alters DNA methylation and, if so, whether there is a clear threshold below which maternal glucose does not alter cord blood methylation.

The current study had many notable strengths. By meta-analyzing results from multiple cohorts, we were able to increase the statistical power of the study and adjust for a large number of potential confounders, including estimated cell fractions. We also used stringent adjustments for multiple testing to reduce the chance of identifying false positives. Another strength of the study was the evaluation of DMRs (using two different approaches) in addition to individual CpGs.

However, our meta-analyses also had limitations. First, there may have been an overall underestimation of GDM cases, since GDM in several cohorts was diagnosed based on a selective approach. This may have resulted in some participants being misclassified as control subjects, which would have biased results toward the null. Another important consideration is that regression models were adjusted for maternal BMI because it is a risk factor for GDM (35) and may impact cord blood DNA methylation (36). However, this may have also biased results toward the null, since GDM in several cohorts was diagnosed selectively based on traditional risk factors, including obesity. Importantly, women with GDM may have utilized different strategies to manage their disease. However, this information was not available for all

cohorts, and the number of GDM case subjects adhering to particular management strategies or treatments was very small for most cohorts, so these differing subsets of GDM case subjects could not be evaluated separately. We also could not evaluate potential differences by fetal sex due to the small number of GDM case subjects per cohort. Additionally, since the gestational age at OGTT was not available for all participants, we were unable to adjust for this covariate. Another potential limitation was our focus on cord blood DNA methylation, which may not reflect methylation patterns in other tissues. However, cord blood DNA methylation has been associated with several outcomes that have been associated with in utero exposure to GDM, such as early childhood weight and adiposity (37) and ASD (38). While we excluded CpGs that overlapped SNPs and also CpG probes with SNPs at the single bp extension (27), we cannot rule out the possibility that some of the differentially methylated CpGs and regions identified in this meta-analysis may be driven by genetic, rather than epigenetic, differences between GDM case and control subjects, which merits future investigation. Finally, since the majority of individuals in the seven participating cohorts were of European ancestry, results from the current meta-analysis may not be generalizable to other populations.

Conclusion

In a meta-analysis of integrated EWAS results from seven pregnancy cohorts,

comprising data from 3,677 mother-newborn pairs, GDM was associated with lower cord blood methylation levels within the promoter region of *OR2L13* and the gene body of *CYP2E1*. Given that reduced methylation in the *OR2L13* promoter has previously been associated with both GDM status and ASD, its potential role in mediating this relationship should be evaluated in future studies. Additionally, since *CYP2E1* is upregulated in peripheral blood from individuals with type 1 and type 2 diabetes, the impact of reduced methylation within this gene among GDM-exposed newborns on subsequent health merits future investigation. Finally, the inability to replicate many results from previous studies of GDM exposure and cord blood DNA methylation highlights the importance of conducting EWAS meta-analyses using data from multiple cohorts.

Acknowledgments. Acknowledgments for each study can be found in the Supplementary Data.

Funding. Funding for authors and cohorts can be found in the Supplementary Data.

Duality of Interest. D.L.D. has received personal fees from Novartis. D.A.L. has received support from Roche Diagnostics and Medtronic for work unrelated to that presented here. No other potential conflicts of interest relevant to this article were reported.

Author Contributions. C.G.H. conducted the meta-analysis and wrote the first draft of the manuscript. C.G.H., B.C., R.F., J.J., T.K., S.L., H.E.M., L.A.S., S.R.-S., A.P.S., P.Y., C.L.-A., A.B., E.B.B., V.L.C., D.C., D.D., D.L.D., A.G., Z.H., E.K., J.M.T.L., D.A.L., A.L., T.S.N., E.A.N., E.O., C.P., M.P., K.R., C.L.R., G.C.S., T.I.A.S., J.S., M.V., W.Z.,

M.-F.H., and C.V.B. provided feedback on the manuscript. C.G.H., C.L.-A., M.-F.H., and C.V.B. drafted the meta-analysis plan. C.G.H. and C.V.B. conceptualized the study. B.C., R.F., J.J., T.K., S.L., H.E.M., L.A.S., S.R.-S., A.P.S., and P.Y. contributed to cohort-specific statistical analyses. R.F. conducted the shadow meta-analyses. A.B., E.B.B., V.L.C., D.C., D.L.D., A.G., Z.H., E.K., J.M.T.L., D.A.L., A.L., T.S.N., E.A.N., E.O., C.P., M.P., K.R., C.L.R., G.C.S., T.I.A.S., J.S., M.V., W.Z., and M.-F.H. oversaw cohort-specific analyses. M.-F.H. and C.V.B. supervised the meta-analysis. C.G.H. is the guarantor of this work and, as such, had full access to all the data in the study and takes responsibility for the integrity of the data and the accuracy of the data analysis.

Prior Presentation. Parts of this study were presented in abstract form at the 2019 Developmental Origins of Health and Disease World Congress, 20–23 October 2019, Melbourne, Australia.

References

- DeSisto CL, Kim SY, Sharma AJ. Prevalence estimates of gestational diabetes mellitus in the United States, Pregnancy Risk Assessment Monitoring System (PRAMS), 2007–2010. *Prev Chronic Dis* 2014;11:E104
- Sacks DA, Hadden DR, Maresh M, et al.; HAPO Study Cooperative Research Group. Frequency of gestational diabetes mellitus at collaborating centers based on IADPSG consensus panel-recommended criteria: the Hyperglycemia and Adverse Pregnancy Outcome (HAPO) Study. *Diabetes Care* 2012;35:526–528
- Mack LR, Tomich PG. Gestational diabetes: diagnosis, classification, and clinical care. *Obstet Gynecol Clin North Am* 2017;44:207–217
- Clausen TD, Mathiesen ER, Hansen T, et al. Overweight and the metabolic syndrome in adult offspring of women with diet-treated gestational diabetes mellitus or type 1 diabetes. *J Clin Endocrinol Metab* 2009;94:2464–2470
- Brand JS, West J, Tuffnell D, et al. Gestational diabetes and ultrasound-assessed fetal growth in South Asian and White European women: findings from a prospective pregnancy cohort. *BMC Med* 2018;16:203
- Wan H, Zhang C, Li H, Luan S, Liu C. Association of maternal diabetes with autism spectrum disorders in offspring: a systemic review and meta-analysis. *Medicine (Baltimore)* 2018; 97:e9438
- Fraser A, Almqvist C, Larsson H, Långström N, Lawlor DA. Maternal diabetes in pregnancy and offspring cognitive ability: sibling study with 723,775 men from 579,857 families. *Diabetologia* 2014;57:102–109
- Finer S, Mathews C, Lowe R, et al. Maternal gestational diabetes is associated with genome-wide DNA methylation variation in placenta and cord blood of exposed offspring. *Hum Mol Genet* 2015;24:3021–3029
- Quilter CR, Cooper WN, Cliffe KM, et al. Impact on offspring methylation patterns of maternal gestational diabetes mellitus and intrauterine growth restraint suggest common genes and pathways linked to subsequent type 2 diabetes risk. *FASEB J* 2014;28:4868–4879
- Ruchat S-M, Houde A-A, Voisin G, et al. Gestational diabetes mellitus epigenetically affects genes predominantly involved in metabolic diseases. *Epigenetics* 2013;8:935–943
- El Hajj N, Pliushch G, Schneider E, et al. Metabolic programming of MEST DNA methylation by intrauterine exposure to gestational diabetes mellitus. *Diabetes* 2013;62:1320–1328
- Haertle L, El Hajj N, Dittrich M, et al. Epigenetic signatures of gestational diabetes mellitus on cord blood methylation. *Clin Epigenetics* 2017;9:28
- Kang J, Lee CN, Li HY, Hsu KH, Lin SY. Genome-wide DNA methylation variation in maternal and cord blood of gestational diabetes population. *Diabetes Res Clin Pract* 2017;132:127–136
- Yang IV, Zhang W, Davidson EJ, Fingerlin TE, Kechris K, Dabelea D. Epigenetic marks of in utero exposure to gestational diabetes and childhood adiposity outcomes: the EPOCH study. *Diabet Med* 2018;35:612–620
- Weng X, Liu F, Zhang H, et al. Genome-wide DNA methylation profiling in infants born to gestational diabetes mellitus. *Diabetes Res Clin Pract* 2018;142:10–18
- Chen D, Zhang A, Fang M, et al. Increased methylation at differentially methylated region of GNAS in infants born to gestational diabetes. *BMC Med Genet* 2014;15:108
- Kang J, Lee CN, Li HY, Hsu KH, Wang SH, Lin SY. Association of interleukin-10 methylation levels with gestational diabetes in a Taiwanese population. *Front Genet* 2018;9:222
- Bouchard L. Epigenetics and fetal metabolic programming: a call for integrated research on larger cohorts. *Diabetes* 2013;62:1026–1028
- Felix JF, Joubert BR, Baccarelli AA, et al. Cohort profile: Pregnancy And Childhood Epigenetics (PACE) Consortium. *Int J Epidemiol* 2018; 47:22–23u
- Moyer VA; U.S. Preventive Services Task Force. Screening for gestational diabetes mellitus: U.S. Preventive Services Task Force recommendation statement. *Ann Intern Med* 2014; 160:414–420
- Metzger BE, Gabbe SG, Persson B, et al.; International Association of Diabetes and Pregnancy Study Groups Consensus Panel. International Association of Diabetes and Pregnancy Study Groups recommendations on the diagnosis and classification of hyperglycemia in pregnancy. *Diabetes Care* 2010;33:676–682
- Carpenter MW, Coustan DR. Criteria for screening tests for gestational diabetes. *Am J Obstet Gynecol* 1982;144:768–773
- Fraser A, Nelson SM, Macdonald-Wallis C, Lawlor DA. Associations of existing diabetes, gestational diabetes, and glycosuria with offspring IQ and educational attainment: the Avon Longitudinal Study of Parents and Children. *Exp Diabetes Res* 2012;2012:963735
- Olsen SF, Houshmand-Oeregaard A, Granström C, et al. Diagnosing gestational diabetes mellitus in the Danish National Birth Cohort. *Acta Obstet Gynecol Scand* 2017;96:563–569
- Andrews SV, Bakulski KM. *FlowSorted. Cord-Blood. 450k User's Guide Methylation Dataset on Sorted Cord Blood Cells*, 2019
- Willer CJ, Li Y, Abecasis GR. METAL: fast and efficient meta-analysis of genomewide association scans. *Bioinformatics* 2010;26:2190–2191
- Chen YA, Lemire M, Choufani S, et al. Discovery of cross-reactive probes and polymorphic CpGs in the Illumina Infinium HumanMethylation450 microarray. *Epigenetics* 2013; 8:203–209
- Hansen KD. *IlluminaHumanMethylation450kanno.ilmn12.hg19: Annotation for Illumina's 450k Methylation Arrays*. R Package Version 0.6.0, 2016
- Pedersen BS, Schwartz DA, Yang IV, Kechris KJ. Comb-p: software for combining, analyzing, grouping and correcting spatially correlated P-values. *Bioinformatics* 2012;28:2986–2988
- Peters T, Peters MT. *biocViews Differential Methylation G, GenomeAnnotation D, One-Channel T, MultipleComparison Q*. Package 'DMRcate'. 2016
- Jaffe AE, Irizarry RA. Accounting for cellular heterogeneity is critical in epigenome-wide association studies. *Genome Biol* 2014;15:R31
- Dall'Aglio L, Muka T, Cecil CAM, et al. The role of epigenetic modifications in neurodevelopmental disorders: a systematic review. *Neurosci Biobehav Rev* 2018;94:17–30
- Wang Z, Hall SD, Maya JF, Li L, Asghar A, Gorski JC. Diabetes mellitus increases the in vivo activity of cytochrome P450 2E1 in humans. *Br J Clin Pharmacol* 2003;55:77–85
- Houde AA, Ruchat SM, Allard C, et al. LRP1B, BRD2 and CACNA1D: new candidate genes in fetal metabolic programming of newborns exposed to maternal hyperglycemia. *Epigenomics* 2015;7:1111–1122
- Ramos GA, Caughey AB. The interrelationship between ethnicity and obesity on obstetric outcomes. *Am J Obstet Gynecol* 2005;193:1089–1093
- Sharp GC, Salas LA, Monnereau C, et al. Maternal BMI at the start of pregnancy and offspring epigenome-wide DNA methylation: findings from the pregnancy and childhood epigenetics (PACE) consortium. *Hum Mol Genet* 2017;26:4067–4085
- Kresovich JK, Zheng Y, Cardenas A, et al. Cord blood DNA methylation and adiposity measures in early and mid-childhood. *Clin Epigenetics* 2017;9:86
- Andrews SV, Ellis SE, Bakulski KM, et al. Cross-tissue integration of genetic and epigenetic data offers insight into autism spectrum disorder. *Nat Commun* 2017;8:1011