



# Safety of Empagliflozin in Patients With Type 2 Diabetes and Chronic Kidney Disease: Pooled Analysis of Placebo-Controlled Clinical Trials

Diabetes Care 2022;45:1445–1452 | <https://doi.org/10.2337/dc21-2034>

Katherine R. Tuttle,<sup>1</sup> Adeera Levin,<sup>2</sup> Masaomi Nangaku,<sup>3</sup> Takashi Kadowaki,<sup>3,4</sup> Rajiv Agarwal,<sup>5</sup> Sibylle J. Hauske,<sup>6,7</sup> Amelie Elsässer,<sup>6</sup> Ivana Ritter,<sup>6</sup> Dominik Steubl,<sup>6,8</sup> Christoph Wanner,<sup>9</sup> and David C. Wheeler<sup>10</sup>

## OBJECTIVE

To assess the safety of empagliflozin in patients with type 2 diabetes and moderate to severe chronic kidney disease (CKD) (category G3–4) enrolled in clinical trials.

## RESEARCH DESIGN AND METHODS

This analysis pooled data from 19 randomized, placebo-controlled, phase 1–4 clinical trials and 1 randomized, placebo-controlled extension study in which patients received empagliflozin 10 mg or 25 mg daily. Time to first occurrence of adverse events (AEs) was evaluated using Kaplan-Meier analysis and multivariable Cox regression models.

## RESULTS

Among a total of 15,081 patients who received at least one study drug dose, 1,522, 722, and 123 were classified as having G3A, G3B, and G4 CKD, respectively, at baseline. Demographic and clinical characteristics were similar between treatment groups across CKD categories. Rates of serious AEs, AEs leading to discontinuation, and events of special interest (including lower limb amputations and acute renal failure [ARF]) were also similar between empagliflozin and placebo across CKD subgroups. In adjusted Cox regression analyses, risks for volume depletion and ARF were similar for empagliflozin and placebo in the combined group with CKD categories G3B and G4 and the G3A group. Notably lower risks were observed in both groups for hyperkalemia (hazard ratio 0.59 [95% CI 0.37–0.96,  $P = 0.0323$ ] and 0.48 [0.26–0.91,  $P = 0.0243$ ], respectively) and edema (0.47 [0.33–0.68,  $P < 0.0001$ ] and 0.44 [0.28–0.68,  $P = 0.0002$ ], respectively).

## CONCLUSIONS

Use of empagliflozin in patients with type 2 diabetes and advanced CKD raised no new safety concerns and may have beneficial effects on the development of hyperkalemia and edema.

Type 2 diabetes is the leading cause of chronic kidney disease (CKD) worldwide (1). CKD, characterized by the presence of albuminuria and/or a decline in glomerular

<sup>1</sup>Providence Health Care, University of Washington, Spokane, WA

<sup>2</sup>University of British Columbia, Vancouver, British Columbia, Canada

<sup>3</sup>Graduate School of Medicine, The University of Tokyo, Tokyo, Japan

<sup>4</sup>Toranomon Hospital, Tokyo, Japan

<sup>5</sup>Indiana University, Indianapolis, IN

<sup>6</sup>Boehringer Ingelheim Pharma GmbH & Co. KG, Ingelheim, Germany

<sup>7</sup>Vth Department of Medicine, University Medical Center Mannheim, University of Heidelberg, Heidelberg, Germany

<sup>8</sup>Department of Nephrology, Faculty of Medicine, Technical University Munich, Munich, Germany

<sup>9</sup>Würzburg University Clinic, Würzburg, Germany

<sup>10</sup>University College London, London, U.K.

Corresponding author: Katherine R. Tuttle, [katherine.tuttle@providence.org](mailto:katherine.tuttle@providence.org)

Received 29 September 2021 and accepted 25 March 2022

Clinical trial reg. nos. NCT00885118, NCT00789035, NCT00558571, NCT00749190, NCT01011868, NCT01193218, NCT01210001, NCT01177813, NCT01159600, NCT01289990, NCT01131676, NCT01164501, NCT01370005, NCT01306214, NCT01649297, NCT01947855, and NCT02589639, [clinicaltrials.gov](http://clinicaltrials.gov).

This article contains supplementary material online at <https://doi.org/10.2337/figshare.19465484>.

This article is featured in a podcast available at [diabetesjournals.org/journals/pages/diabetes-core-update-podcasts](https://diabetesjournals.org/journals/pages/diabetes-core-update-podcasts).

© 2022 by the American Diabetes Association. Readers may use this article as long as the work is properly cited, the use is educational and not for profit, and the work is not altered. More information is available at <https://www.diabetesjournals.org/journals/pages/license>.

filtration rate, develops in ~40% of patients with type 2 diabetes (2,3). During the course of CKD in diabetes, the annual decline in estimated glomerular filtration rate (eGFR) varies greatly depending on the severity of CKD and the presence of risk factors such as hyperglycemia, hypertension, obesity, and smoking (4). CKD attributed to diabetes is the leading global cause of kidney failure, requiring dialysis treatment or a kidney transplant (5). Both eGFR <60 mL/min/1.73 m<sup>2</sup> and albuminuria are independent predictors of cardiovascular events and mortality (6,7), meaning that patients with diabetes and concomitant CKD are a particularly high-risk population.

Interventions to prevent or slow CKD progression are essential to reduce risks for serious complications (8). Empagliflozin, a selective sodium–glucose cotransporter 2 (SGLT2) inhibitor, has been shown to reduce onset and progression of CKD in patients with type 2 diabetes (8). Current U.S. Food and Drug Administration prescribing information allows for empagliflozin to be used in patients with an eGFR ≥30 mL/min/1.73 m<sup>2</sup> (9), but labeling may vary from country to country. However, both kidney and cardiovascular benefits have been observed with empagliflozin in patients with heart failure and an eGFR as low as 20 mL/min/1.73 m<sup>2</sup>, irrespective of diabetes status (10).

In the Empagliflozin Cardiovascular Outcome Event Trial in Type 2 Diabetes Mellitus Patients (EMPA-REG OUTCOME), a cardiovascular outcome trial that included patients with type 2 diabetes and established cardiovascular disease with an eGFR ≥30 mL/min/1.73 m<sup>2</sup>, empagliflozin added to the standard of care reduced cardiovascular death by 38%, hospitalization for heart failure by 35%, and all-cause mortality by 32% compared with placebo (11); there was also a 39% reduction in incident or worsening nephropathy (12). Notably, the safety profile of empagliflozin in patients with CKD category G3 (eGFR 30 to <60 mL/min/1.73 m<sup>2</sup>) was consistent with that of the overall trial population (12), and observed rates of adverse events (AEs) of particular concern in this population, such as rates of urinary tract and genital infections, volume depletion, acute renal failure (ARF), hyperkalemia, hypoglycemia, bone fracture, and lower

limb amputations, were not different from rates seen in patients receiving placebo (13).

A large pooled analysis of data from the empagliflozin clinical trial program has previously reported safety analyses (14). The present analysis reports safety data for AEs that are particularly relevant in this population with type 2 diabetes and moderate to severe CKD (CKD categories G3–4) who were enrolled in these clinical trials.

## RESEARCH DESIGN AND METHODS

The pooled analysis included data from 19 randomized, placebo-controlled, phase 1–4 clinical trials (including EMPA-REG OUTCOME) and 1 extension study that included participants from 3 of the 19 included trials (Supplementary Table 1). All trials enrolled patients with type 2 diabetes. The data pool comprised placebo-controlled trials in which participants received empagliflozin 10 mg or 25 mg daily, including some that involved dose escalation or up-titration from the 10 to the 25 mg dose. No studies of open-label treatment or active comparators were included.

### Safety Assessment

Safety was assessed based on investigator-reported AEs that were coded according to preferred terms in the Medical Dictionary for Regulatory Activities (MedDRA) version 21.0. Serious AEs (SAEs) were defined as any AE that resulted in death, was immediately life threatening, resulted in persistent or marked disability/incapacity, required or prolonged inpatient hospitalization, was a congenital anomaly/birth defect, or was deemed serious for any other reason. Hypoglycemia, including all confirmed hypoglycemic events (with a glucose value ≤70 mg/dL or where assistance was required), and other defined events of special interest were identified by a search of MedDRA preferred terms. As lower limb amputations were not usually captured in AE reports, the frequency of lower limb amputations was assessed based on a medical review of the pooled safety data and AE narratives (15).

### Data Analyses

The eGFR was calculated from the serum creatinine (Chronic Kidney Disease Epidemiology Collaboration [CKD-EPI] equation

2009). AEs were assessed in all participants who received at least one study drug dose. Exposure-adjusted incidence rates were calculated per 100 patient-years as  $100 \times n/T$ , where  $n$  was the number of participants with the event and  $T$  the total patient-years at risk for the event. Patient-years at risk were defined as the time from the first dose of study treatment received to the onset of the first event (for those with an event) or to the last dose plus 7 days (for those without an event). Time to first occurrence of events consistent with edema, hyperkalemia, bone fracture, volume depletion, and ARF was evaluated by Kaplan-Meier analysis (MedDRA terms, Supplementary Table 2). Cox regression analyses were performed for hyperkalemia, edema, volume depletion, and ARF. The Cox regression models for time to first event included the following covariables: age, baseline BMI, baseline HbA<sub>1c</sub>, treatment, sex, baseline eGFR, and a treatment-by-baseline eGFR interaction term. To check for heterogeneity, the Cox regression models were repeated with EMPA-REG OUTCOME versus other trials as a categorical class variable in the model and with the individual study as a random effect, both in addition to the standard parameterization used in the analysis.

### Data and Resource Availability

The sponsor of the EMPA-REG OUTCOME trial (Boehringer Ingelheim) is committed to responsible sharing of clinical trial reports, related clinical documents, and patient-level clinical data. Researchers are invited to submit inquiries through the Vivli Center for Global Clinical Research website (<https://vivli.org>).

## RESULTS

### Analysis Population

In total, 15,081 patients were included in the pooled analysis population. Baseline eGFR was <60 mL/min/1.73 m<sup>2</sup> in 2,367 patients (1,519 who received empagliflozin 10 or 25 mg; 848 who received placebo). A total of 1,522, 722, and 123 patients were classified as having CKD categories G3A (eGFR 45 to <60 mL/min/1.73 m<sup>2</sup>), G3B (eGFR 30 to <45 mL/min/1.73 m<sup>2</sup>), and G4 (eGFR <30 mL/min/1.73 m<sup>2</sup>), respectively. Total exposure for the placebo and empagliflozin groups, respectively, was 1,014 and 2,021 patient-years in CKD category

G3A, 503 and 850 patient-years in CKD category G3B, and 50 and 89 patient-years in CKD category G4. The proportion of patients with normoalbuminuria, microalbuminuria, or macroalbuminuria was similar across the empagliflozin (66.3%, 24.8%, and 7.7%, respectively) and placebo (64.5%, 25.6%, and 8.9%, respectively) treatment groups. Demographic and baseline characteristics were similar between patients with eGFR <60 mL/min/1.73 m<sup>2</sup> in the empagliflozin and placebo groups across these CKD categories (Table 1).

### AEs

Rates of SAEs and AEs leading to discontinuation were similar between the

empagliflozin and placebo treatment groups across the overall cohort and CKD subgroups (Table 2 and Supplementary Fig. 1). SAE incidence rates were numerically higher in the G4 category for empagliflozin versus placebo (41.31 vs. 29.93 per 100 patient-years). However, numbers of patients in this group were low (51 and 71 patients, respectively), with wide CIs that should therefore be interpreted with caution.

Events of special interest (including lower limb amputations and ARF) were similar between empagliflozin and placebo across CKD subgroups and overall (Table 2 and Supplementary Fig. 1). An exception was the frequency of genital infections, which was higher among

those receiving empagliflozin compared with placebo. Notably, the incidence rates of genital infections were progressively lower across CKD categories 3A, 3B, and 4. In contrast, most other AEs were more frequent among those with worsening CKD categories. Unadjusted time to first occurrence of ARF, volume depletion, and bone fracture revealed no significant differences between treatment groups, while edema was less common in patients receiving empagliflozin versus placebo (Fig. 1 and Supplementary Fig. 2). For adjusted Cox regression models, the G4 group was too small for statistical analyses and was therefore combined with the G3B group (CKD categories G3B–G4). Similar risks for volume depletion and ARF

**Table 1—Demographic and baseline characteristics of the pooled analysis population with eGFR <60 mL/min/1.73 m<sup>2</sup> (N = 2,367)**

Characteristic	CKD category and study treatment					
	G3A		G3B		G4	
	Placebo	EMPA 10/25 mg	Placebo	EMPA 10/25 mg	Placebo	EMPA 10/25 mg
Patients, n	519	1,003	277	445	52	71
Male sex, n (%)	358 (69.0)	653 (65.1)	167 (60.3)	277 (62.2)	30 (57.7)	41 (57.7)
Age (years), mean ± SD	67.1 ± 8.1	67.1 ± 7.5	67.9 ± 8.2	67.7 ± 8.7	63.7 ± 10.7	68.8 ± 9.1
Race,* n (%)						
White	369 (71.1)	730 (72.8)	195 (70.4)	308 (69.2)	24 (46.2)	47 (66.2)
Asian	118 (22.7)	210 (20.9)	70 (25.3)	109 (24.5)	28 (53.8)	22 (31.0)
Black or African American	29 (5.6)	52 (5.2)	8 (2.9)	24 (5.4)	0	1 (1.4)
Ethnicity, n (%)						
Not Hispanic or Latino	450 (86.7)	864 (86.1)	245 (88.4)	384 (86.3)	50 (96.2)	65 (91.5)
Hispanic or Latino	68 (13.1)	138 (13.8)	33 (11.6)	61 (13.7)	2 (3.8)	6 (8.5)
HbA <sub>1c</sub> , mean ± SD						
%	8.0 ± 0.8	8.01 ± 0.8	8.1 ± 0.9	8.1 ± 0.9	8.1 ± 0.9	7.95 ± 0.91
mmol/mol	64 ± 9	64 ± 9	65 ± 10	65 ± 10	65 ± 10	63 ± 10
BMI (kg/m <sup>2</sup> ), mean ± SD	30.6 ± 5.2	31.0 ± 5.5	31.1 ± 5.8	31.3 ± 5.6	30.9 ± 5.7	29.5 ± 4.9
Blood pressure (mmHg),† mean ± SD						
Systolic	136.7 ± 18.7	135.9 ± 17.1	135.0 ± 17.7	137.4 ± 18.0	143.0 ± 23.9	137.5 ± 21.0
Diastolic	75.4 ± 10.2	75.5 ± 10.1	73.6 ± 10.2	74.0 ± 9.9	75.2 ± 12.4	72.6 ± 10.8
Heart failure,‡ n (%)	51 (9.8)	114 (11.4)	31 (11.2)	53 (11.9)	8 (15.4)	7 (9.9)
Hypertension, n (%)	486 (93.6)	950 (94.7)	270 (97.5)	426 (95.7)	51 (98.1)	68 (95.8)
Concomitant medications, n (%)						
Metformin	352 (67.8)	662 (66.0)	118 (42.6)	198 (44.5)	9 (17.3)	35 (49.3)
Insulin	268 (51.6)	502 (50.0)	172 (62.1)	276 (62.0)	38 (73.1)	53 (74.6)
ACE inhibitors/ARBs	424 (81.7)	843 (84.0)	224 (80.9)	361 (81.1)	36 (69.2)	51 (71.8)
Loop diuretics	109 (21)	195 (19.4)	91 (32.9)	151 (33.9)	24 (46.2)	35 (49.3)
Statins	370 (71.3)	752 (75.0)	198 (71.5)	315 (70.8)	40 (76.9)	52 (73.2)
Aspirin	387 (74.6)	739 (73.7)	209 (75.5)	333 (74.8)	34 (65.4)	51 (71.8)

CKD categories by eGFR: G3A, 45 to <60 mL/min/1.73 m<sup>2</sup>; G3B, 30 to <45 mL/min/1.73 m<sup>2</sup>; G4, 15 to <30 mL/min/1.73 m<sup>2</sup>. ARB, angiotensin receptor blocker; EMPA 10/25, empagliflozin 10 or 25 mg. \*Race identified as other (American Indian, Alaska Native, Hawaiian, Pacific Islander) or race information not recorded for seven patients in the CKD category G3A group. †Baseline systolic/diastolic blood pressure readings were missing for one patient in the empagliflozin 10 mg group. ‡A history of heart failure at baseline was identified by narrow standardized MedDRA query 20000004.



Table 2—Continued

Category	Placebo		EMPA 10/25 mg	
	n/N (%)	Rate, 100 patient-years (95% CI)	n/N (%)	Rate, 100 patient-years (95% CI)
Lower limb amputation*				
Overall	46/4,904 (0.9)	0.52 (0.38–0.69)	95/10,177 (0.1)	0.52 (0.42–0.63)
G3A	11/519 (2.1)	0.92 (0.46–1.65)	17/1,003 (1.7)	0.74 (0.43–1.18)
G3B	7/277 (2.5)	1.22 (0.49–2.51)	10/445 (2.2)	0.95 (0.46–1.75)
G4	0/52 (0)	0	4/71 (5.6)	3.59 (0.98–9.20)

Exposure-adjusted incidence rates were calculated per 100 patient-years as  $100 \times n / T$ , where  $n$  was the number of participants with the event and  $T$  the total patient-years at risk for the event. Patient-years at risk were defined as the time from the first dose of study treatment to the onset of the first event (for patients with an event) or to the last dose plus 7 days (for those without an event). The eGFR was calculated using the CKD-EPI equation. CKD categories by eGFR: G3A, 45 to <60 mL/min/1.73 m<sup>2</sup>; G3B, 30 to <45 mL/min/1.73 m<sup>2</sup>; G4, 15 to <30 mL/min/1.73 m<sup>2</sup>. Frequencies  $n/N$  = patients with one or more events of all patients who received one or more doses of study drug. EMPA 10/25, empagliflozin 10 or 25 mg. \*Data from the EMPA-REG OUTCOME trial only. No amputations were reported for the four patients with missing baseline eGFR values.

persisted with adjustment for empagliflozin and placebo in the groups with eGFR <45 mL/min/1.73 m<sup>2</sup> (CKD categories G3B–G4) and 45 to <60 mL/min/1.73 m<sup>2</sup> (CKD category G3A), but lower risks were observed with empagliflozin for hyperkalemia (hazard ratio [HR] 0.59 [95% CI 0.37–0.96,  $P = 0.0323$ ] and 0.48 [0.26–0.91],  $P = 0.0243$ , respectively) and edema (0.47 [0.33–0.68,  $P < 0.0001$ ] and 0.44 [0.28–0.68,  $P = 0.0002$ ], respectively) compared with placebo (Supplementary Table 3). Testing for heterogeneity across trials showed nominal differences with regard to the HRs and 95% CIs for the risks of volume depletion, ARF, hyperkalemia, and edema (Supplementary Tables 4 and 5). Even though the EMPA-REG OUTCOME trial versus other trials showed a statistically significant different trial effect for volume depletion ( $P < 0.001$ ) and edema ( $P = 0.005$ ), which can give a hint that there might be trial-specific heterogeneity, the HRs were essentially identical compared with the original Cox regression model or with the additional trial frailty term model including study as a random effect (for eGFR 45 < 60 mL/min/1.73 m<sup>2</sup> for volume depletion: HR 0.90 [original model] vs. 0.90 [EMPA-REG OUTCOME trial vs. other] and 0.91 [frailty term model with trial as random effect]; for edema: 0.47 vs. 0.47 and 0.47, respectively).

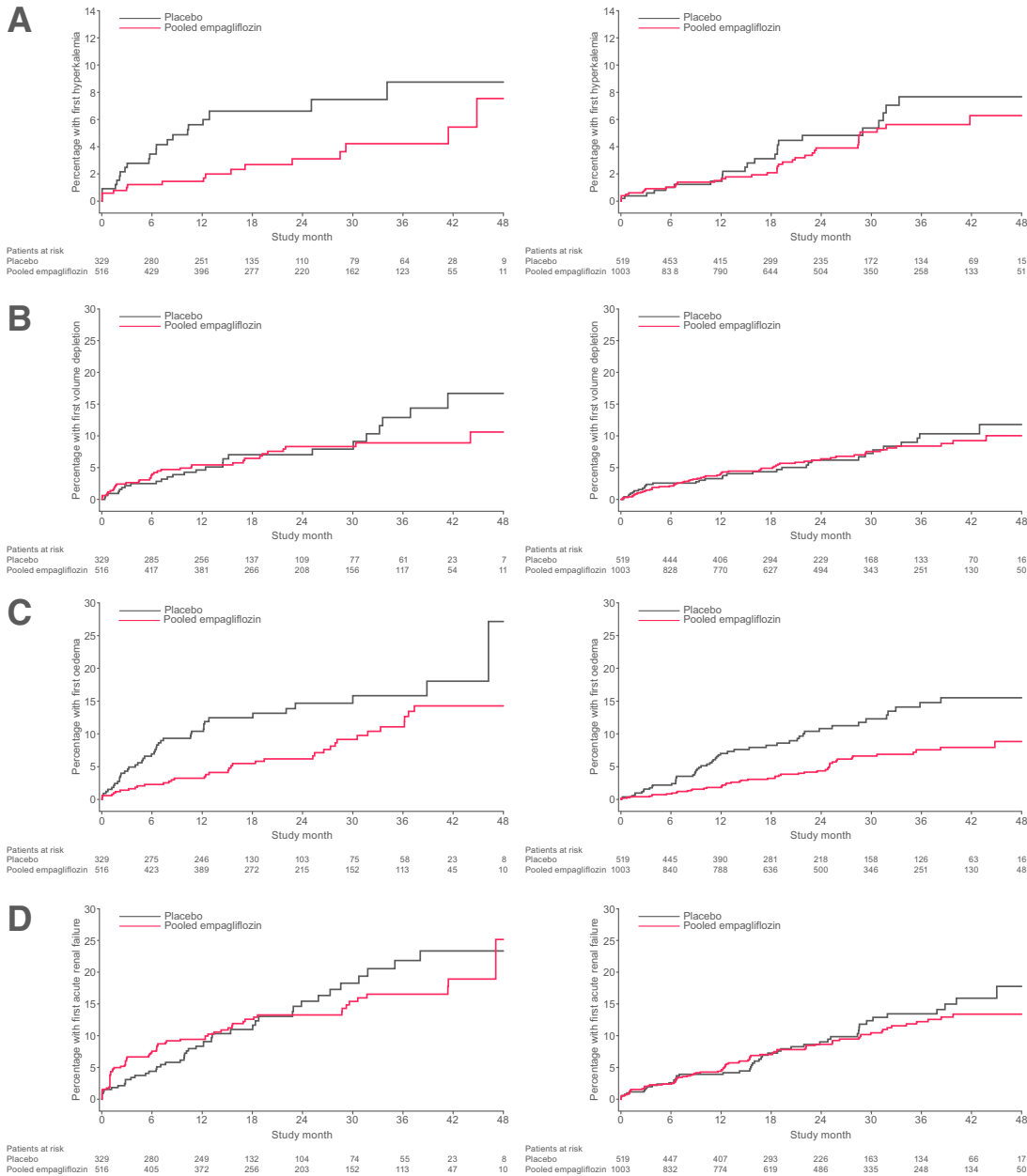
## CONCLUSIONS

This comprehensive safety analysis of a large pool of patients with advanced CKD who received empagliflozin in clinical trials found no overall differences in rates of SAEs, AEs leading to discontinuation,

or events of special interest with empagliflozin treatment versus placebo, irrespective of baseline eGFR. An exception was genital infections, a well-recognized adverse effect of the SGLT2 inhibitor class (16–18), which occurred more frequently in the empagliflozin group versus the placebo group but with lower incidence rates in advanced CKD categories. This could be due to, at least in part, lesser urinary glucose excretion at lower levels of eGFR (19). Indeed, poorly controlled diabetes, typically accompanied by higher urinary glucose excretion, independently increases the risk of genital infections in patients with type 2 diabetes (20). Current prescribing information for empagliflozin notes that a higher incidence of AEs related to reduced renal function may be seen in patients with CKD (9). However, while ARF and other AEs were more common with decreasing kidney function in both treatment groups, observed rates were similar between empagliflozin and placebo in all CKD categories. Notably, a meta-analysis of SGLT2 inhibitor studies, which included cardiovascular outcome trials and the Canagliflozin and Renal Endpoints in Diabetes with Established Nephropathy Clinical Evaluation (CREDESCENCE) trial that was conducted in patients with type 2 diabetes and CKD, demonstrated a 25% reduction in the risk of acute kidney injury (21).

The safety findings with empagliflozin in this pooled analysis may support the use of SGLT2 inhibitors in patients with type 2 diabetes and advanced CKD. In CREDESCENCE (22), canagliflozin showed consistent benefit across CKD subgroups.

The Effect of Dapagliflozin on Renal Outcomes and Cardiovascular Mortality in Patients with Chronic Kidney Disease (DAPA-CKD) trial (23) further demonstrated that dapagliflozin reduced risks of CKD outcomes, as well as heart failure events, cardiovascular death, and all-cause mortality, in a trial population of patients with CKD, one-third of whom did not have type 2 diabetes. The American Diabetes Association (24) currently recommends that for patients with type 2 diabetes, CKD, and albuminuria, SGLT2 inhibitor therapy is preferred but that either an SGLT2 inhibitor or a glucagon-like peptide 1 receptor agonist is suitable for patients with type 2 diabetes and CKD in the absence of albuminuria. The Kidney Disease: Improving Global Outcomes guidelines for diabetes and CKD (25) also recommended an SGLT2 inhibitor as first-line treatment in patients with CKD and type 2 diabetes who have an eGFR  $\geq 30$  mL/min/1.73 m<sup>2</sup>, regardless of the presence or absence of albuminuria. However, the current label recommendations for eGFR levels at which SGLT2 inhibitors can be initiated or should be discontinued differ between agents, and the labeling for each agent may differ between countries and regions. Of note, no new safety concerns were seen in the small group of patients with eGFR <30 mL/min/1.73 m<sup>2</sup> included in this analysis, supporting the safety of SGLT2 inhibitors in advanced CKD. This aligns with findings from the Empagliflozin Outcome Trial in Patients with Chronic Heart Failure with Reduced Ejection Fraction (EMPEROR-Reduced) that included



**Figure 1**—Kaplan-Meier estimates of time to first event of hyperkalemia (A), volume depletion (B), edema (C), and ARF (D) in patients with eGFR <45 mL/min/1.73 m<sup>2</sup> (left) and 45 to <60 mL/min/1.73 m<sup>2</sup> (right). eGFR was calculated using the CKD-EPI equation.

patients with heart failure and eGFR level as low as 20 mL/min/1.73 m<sup>2</sup> (10). CKD was present in 53% of this trial population.

Patients with advanced CKD, especially those receiving renin-angiotensin system blockers, are prone to hyperkalemia. Notably, a lower risk for hyperkalemia was observed in patients receiving empagliflozin versus placebo in the present analysis. Dapagliflozin has also shown no signal for higher risk of hyperkalemia (26,27). Moreover, hyperkalemia risk was mitigated by canagliflozin in the CREDENCE trial, and there were no meaningful effects

of canagliflozin on serum potassium or related AEs across the Canagliflozin Cardiovascular Assessment Study (CANVAS) program (28,29). This favorable effect of SGLT2 inhibitors on serum potassium in patients with type 2 diabetes and CKD might permit the broader use of drugs associated with hyperkalemia, such as mineralocorticoid receptor antagonists (30,31).

In the pooled data set analyzed for the current study, there was no association between empagliflozin and increased risk of bone fracture or lower limb amputations. The pattern for these events with

empagliflozin was similar to that seen with placebo. Indeed, a similar risk of volume depletion and ARF was seen in the empagliflozin and placebo groups in this analysis, but a reduction in the occurrence of edema was reported in patients receiving empagliflozin versus those in the placebo group. Like empagliflozin, no causal association between dapagliflozin and risk of fractures or lower limb amputations has been confirmed (26,27). However, the CANVAS program reported a twofold increased risk of lower limb amputation and a 26% increased risk of bone fractures associated with canagliflozin (32).



While this initially resulted in a black box warning to highlight the potentially increased risk of lower limb amputation for canagliflozin (18), these findings were not reproduced in the subsequent CRE-DENCE trial, and the black box warning has since been removed (33).

In this pooled safety analysis, we did not assess diabetic ketoacidosis by CKD subgroup because the incidence of this AE was too low. However, in a previous pooled analysis, overall observed rates of diabetic ketoacidosis were comparable across empagliflozin and placebo treatment groups (14). A similar result was seen in the DAPA-CKD trial, where diabetic ketoacidosis was not seen in any participant receiving dapagliflozin and was reported in only two receiving placebo (23).

Strengths of this analysis include the large sample size and inclusion of only patients randomly assigned to double-blind treatment. The data set was derived from placebo-controlled clinical trials at different stages of development, and it included patients in each of the low eGFR categories for analysis. Baseline characteristics were balanced between the different treatment groups, and time on treatment was similar. Limitations of this pooled analysis arose from the varying durations, designs, and populations of the included studies. However, this limitation applies to all pooled analyses, including meta-analyses. In turn, it is generally accepted that the increased number of trials/individuals in pooled analyses outweigh the limitations mentioned above. Additionally, by merging the patients treated with empagliflozin 10 mg or 25 mg into a single group, this analysis cannot elaborate on potential dose effects for AEs or SAEs. In other studies, however, the safety profile was similar for both doses (14). There were two studies (contributing a total of 432 participants) in which the dose of empagliflozin was escalated from 10 to 25 mg daily (NCT02182830: 157 participants) or uptitrated from 10 to 25 mg in patients with insufficient glycemic control only (NCT02453555: 275 participants). Data from these participants are included in the EMPA-REG OUTCOME 10 and 25 mg results. Renal impairment as an exclusion criterion at baseline in both these trials was defined as eGFR <45 mL/min/1.73 m<sup>2</sup> compared with <30 mL/min/1.73 m<sup>2</sup> in EMPA-REG OUTCOME. Findings regarding patients with

CKD category G4 should be interpreted with caution because of the small sample size. Finally, statistical analyses were not adjusted for multiple comparisons.

In conclusion, use of empagliflozin in patients with type 2 diabetes and advanced CKD raised no new safety concerns and may have beneficial effects on development of hyperkalemia and edema. Dedicated SGLT2 inhibitor trials investigating treatment effects in patients with CKD may provide further data to confirm these observations, particularly in those with CKD category G4 where data are currently limited. Nevertheless, careful consideration of the current prescribing information for empagliflozin is recommended in this population. To build on the promising findings to date, a dedicated kidney disease outcome trial of empagliflozin versus placebo, enrolling >6,600 patients with and without diabetes, including those with low levels of kidney function with and without albuminuria, is under way (EMPA-KIDNEY; NCT03594110) (7).

**Acknowledgments.** The authors thank Audrey Koitka-Weber, an employee of Boehringer Ingelheim at the time of the research, for her contributions to the analysis. Medical writing assistance, supported financially by Boehringer Ingelheim, was provided by Andy Shepherd of Envision Scientific Solutions.

**Funding and Duality of Interest.** This pooled analysis was funded by the Boehringer Ingelheim & Eli Lilly and Company Diabetes Alliance. K.R.T. is supported by National Institutes of Health National Center for Advancing Translational Sciences grant 4UL1TR00426-10 and National Institute of Diabetes and Digestive and Kidney Disease grants 1U2CDK114886-01, 5UM1DK100846-03, 2U01DK10086-07, 1U54DK 083912, and 2UC4DK101108-02 and Centers for Disease Control and Prevention grant 75D301-19-Q-69877. She also has served as a consultant or advisor for Eli Lilly and Company, Boehringer Ingelheim, AstraZeneca, Gilead, Goldfinch Bio, Novo Nordisk, Bayer, and Janssen. A.L. has received research support from Amgen, AstraZeneca, Janssen, Merck, Otsuka, Canadian Institute for Health Research, Kidney Foundation of Canada, Heart and Stroke Foundation of Canada, and the Michael Smith Health Research Foundation. M.N. has received lecture fees from Kyowa Kirin, Astellas Pharma, GlaxoSmithKline, Daiichi Sankyo, Mitsubishi Tanabe Pharma, Chugai Pharmaceutical, Torii, JT Pharma, Alexion, Akebia, MSD, and Boehringer Ingelheim and research support from JT Pharma, Kyowa Kirin, Astellas Pharma, Ono Pharmaceutical, Takeda Pharmaceutical, Daiichi Sankyo, Mitsubishi Tanabe Pharma, Chugai Pharmaceutical, Torii, Kissei Pharmaceutical, and Boehringer Ingelheim. T.K. reports consulting/lecture fees from Abbott, Asahi Mutual Life Insurance, Astellas

Pharma, AstraZeneca, Bayer, Boehringer Ingelheim, Cosmic, Daiichi Sankyo, Eli Lilly and Company, Fujifilm, Fujirebio, Johnson & Johnson, Kissei Pharmaceutical, Kowa Co., Kyowa Kirin, Medical Review, Medscape Education, Medtronic Sofamor Danek, Mitsubishi Tanabe Pharma, MSD, Musashino Foods, Nipro Pharma, Novartis International AG, Novo Nordisk, Ono Pharmaceutical, Sanofi, Sanwa Kagaku Kenkyusho, Sumitomo Dainippon, Taisho Pharmaceutical, Takeda Pharmaceutical, and Terumo; grants from Astellas Pharma, Daiichi Sankyo, Eli Lilly, Kissei Pharmaceutical, Mitsubishi Tanabe Pharma, MSD, Novo Nordisk, Ono Pharmaceutical, Sanofi, Sumitomo Dainippon, Taisho Pharmaceutical, and Takeda Pharmaceutical; contracted research from AstraZeneca and Takeda Pharmaceutical; joint research from Daiichi Sankyo; and an endowed chair from Asahi Mutual Life Insurance, Boehringer Ingelheim, Kowa Co., Mitsubishi Tanabe Pharma, MSD, Novo Nordisk, Ono Pharmaceutical, and Takeda Pharmaceutical. R.A. is supported by National Institutes of Health research grants 5R01HL126903 and VA 5I01 CX001753 and has served as a consultant for Boehringer Ingelheim, Bayer, Akebia, AstraZeneca, Reata, Relypsa, Chinook, and Janssen. S.J.H., A.E., I.R., and D.S. are employees of Boehringer Ingelheim. C.W. has received honoraria for consultancy and lecturing from AstraZeneca, Bayer, Boehringer Ingelheim, GlaxoSmithKline, Eli Lilly, Merck Sharp & Dohme, Mundipharma, Sanofi Genzyme, and Takeda Pharmaceutical. D.W. has received honoraria and consultancy fees from Amgen, AstraZeneca, Bayer, Boehringer Ingelheim, GlaxoSmithKline, Janssen, Napp, Mundipharma, Mitsubishi, Ono Pharmaceutical, Pharmacosmos, Reata, and Vifor Fresenius. No other potential conflicts of interest relevant to this article were reported.

**Author Contributions.** K.R.T. and D.C.W. reviewed and edited the initial research proposal, reviewed the data and analysis, and reviewed and edited the manuscript. A.L., M.N., T.K., R.A., S.J.H., I.R., and C.W. reviewed and edited the initial research proposal and the manuscript. A.E. conducted the statistical analysis and reviewed and edited the manuscript. D.S. reviewed the data and analysis and reviewed and edited the manuscript. D.S. is the guarantor of this work and, as such, had full access to all the data in the study and takes responsibility for the integrity of the data and the accuracy of the data analysis.

**Prior Presentation.** Parts of this study were presented in abstract form at the 77th Scientific Sessions of the American Diabetes Association, San Diego, CA, 9–13 June 2017.

## References

1. Alicic RZ, Rooney MT, Tuttle KR. Diabetic kidney disease: challenges, progress, and possibilities. *Clin J Am Soc Nephrol* 2017;12:2032–2045
2. Bailey RA, Wang Y, Zhu V, Rupnow MF. Chronic kidney disease in US adults with type 2 diabetes: an updated national estimate of prevalence based on Kidney Disease: improving Global Outcomes (KDIGO) staging. *BMC Res Notes* 2014;7:415
3. De Cosmo S, Viazzi F, Pacilli A, et al.; AMD-Annals Study Group. Predictors of chronic kidney disease in type 2 diabetes: a longitudinal study from the AMD Annals initiative. *Medicine (Baltimore)* 2016;95:e4007

4. Kidney Disease: Improving Global Outcomes (KDIGO) CKD Work Group. KDIGO 2012 clinical practice guideline for the evaluation and management of chronic kidney disease. *Kidney Int Suppl* 2013;3:1–150
5. United States Renal Data System. 2019 USRDS Annual Data Report: Epidemiology of Kidney Disease in the United States. Accessed 21 April 2022. Available from <https://www.usrds.org/annual-data-report>
6. Matsushita K, van der Velde M, Astor BC, et al.; Chronic Kidney Disease Prognosis Consortium. Association of estimated glomerular filtration rate and albuminuria with all-cause and cardiovascular mortality in general population cohorts: a collaborative meta-analysis. *Lancet* 2010;375:2073–2081
7. Go AS, Chertow GM, Fan D, McCulloch CE, Hsu CY. Chronic kidney disease and the risks of death, cardiovascular events, and hospitalization. *N Engl J Med* 2004;351:1296–1305
8. Barnett AH, Mithal A, Manassie J, et al.; EMPA-REG RENAL Trial Investigators. Efficacy and safety of empagliflozin added to existing antidiabetes treatment in patients with type 2 diabetes and chronic kidney disease: a randomised, double-blind, placebo-controlled trial. *Lancet Diabetes Endocrinol* 2014;2:369–384
9. JARDIANCE [package insert]. Burlington, ON, Canada, Boehringer Ingelheim (Canada) Ltd., 2020
10. Packer M, Anker SD, Butler J, et al.; EMPEROR-Reduced Trial Investigators. Cardiovascular and renal outcomes with empagliflozin in heart failure. *N Engl J Med* 2020;383:1413–1424
11. Zinman B, Wanner C, Lachin JM, et al.; EMPA-REG OUTCOME Investigators. Empagliflozin, cardiovascular outcomes, and mortality in type 2 diabetes. *N Engl J Med* 2015;373:2117–2128
12. Wanner C, Inzucchi SE, Lachin JM, et al.; EMPA-REG OUTCOME Investigators. Empagliflozin and progression of kidney disease in type 2 diabetes. *N Engl J Med* 2016;375:323–334
13. Wanner C, Lachin JM, Inzucchi SE, et al.; EMPA-REG OUTCOME Investigators. Empagliflozin and clinical outcomes in patients with type 2 diabetes mellitus, established cardiovascular disease, and chronic kidney disease. *Circulation* 2018;137:119–129
14. Kohler S, Zeller C, Iliev H, Kaspers S. Safety and tolerability of empagliflozin in patients with type 2 diabetes: pooled analysis of phase I-III clinical trials. *Adv Ther* 2017;34:1707–1726
15. Inzucchi SE, Iliev H, Pfarr E, Zinman B. Empagliflozin and assessment of lower-limb amputations in the EMPA-REG OUTCOME trial. *Diabetes Care* 2018;41:e4–e5
16. Johnsson KM, Ptaszynska A, Schmitz B, Sugg J, Parikh SJ, List JF. Vulvovaginitis and balanitis in patients with diabetes treated with dapagliflozin. *J Diabetes Complications* 2013;27:479–484
17. Rosiak M, Grzeszczak S, Kosior DA, Postuła M. Emerging treatments in type 2 diabetes: focus on canagliflozin. *Ther Clin Risk Manag* 2014;10:683–689
18. Schernthaner G, Drexel H, Moshkovich E, et al. SGLT2 inhibitors in T2D and associated comorbidities - differentiating within the class. *BMC Endocr Disord* 2019;19:64
19. Macha S, Mattheus M, Halabi A, Pinnetti S, Woerle HJ, Broedl UC. Pharmacokinetics, pharmacodynamics and safety of empagliflozin, a sodium glucose cotransporter 2 (SGLT2) inhibitor, in subjects with renal impairment. *Diabetes Obes Metab* 2014;16:215–222
20. Geerlings S, Fonseca V, Castro-Diaz D, List J, Parikh S. Genital and urinary tract infections in diabetes: impact of pharmacologically-induced glucosuria. *Diabetes Res Clin Pract* 2014;103:373–381
21. Neuen BL, Young T, Heerspink HJL, et al. SGLT2 inhibitors for the prevention of kidney failure in patients with type 2 diabetes: a systematic review and meta-analysis. *Lancet Diabetes Endocrinol* 2019;7:845–854
22. Perkovic V, Jardine MJ, Neal B, et al.; CREDESCENCE Trial Investigators. Canagliflozin and renal outcomes in type 2 diabetes and nephropathy. *N Engl J Med* 2019;380:2295–2306
23. Heerspink HJL, Stefánsson BV, Correa-Rotter R, et al.; DAPA-CKD Trial Committees and Investigators. Dapagliflozin in patients with chronic kidney disease. *N Engl J Med* 2020;383:1436–1446
24. American Diabetes Association. 11. Microvascular complications and foot care: *Standards of Medical Care in Diabetes—2021*. *Diabetes Care* 2021;44(Suppl. 1):S151–S167
25. Kidney Disease: Improving Global Outcomes (KDIGO) Diabetes Work Group. KDIGO 2020 clinical practice guideline for diabetes management in chronic kidney disease. *Kidney Int Suppl* 2020;98: S1–S115
26. Wiviott SD, Raz I, Bonaca MP, et al.; DECLARE-TIMI 58 Investigators. Dapagliflozin and cardiovascular outcomes in type 2 diabetes. *N Engl J Med* 2019;380:347–357
27. Yavin Y, Mansfield TA, Ptaszynska A, Johnsson K, Parikh S, Johnsson E. Effect of the SGLT2 inhibitor dapagliflozin on potassium levels in patients with type 2 diabetes mellitus: a pooled analysis. *Diabetes Ther* 2016;7:125–137
28. Oshima M, Jardine MJ, Agarwal R, et al. Insights from CREDESCENCE trial indicate an acute drop in estimated glomerular filtration rate during treatment with canagliflozin with implications for clinical practice. *Kidney Int* 2021;99:999–1009
29. Weir MR, Slee A, Sun T, et al. Effects of canagliflozin on serum potassium in the CANagliflozin cardioVascular Assessment Study (CANVAS) Program. *Clin Kidney J* 2020;14:1396–1402
30. Agarwal R, Joseph A, Anker SD, et al.; FIDELIO-DKD Investigators. Hyperkalemia risk with finerenone: results from the FIDELIO-DKD Trial. *J Am Soc Nephrol* 2022;33:225–237
31. Bakris GL, Agarwal R, Anker SD, et al.; FIDELIO-DKD Investigators. Effect of finerenone on chronic kidney disease outcomes in type 2 diabetes. *N Engl J Med* 2020;383:2219–2229
32. Neal B, Perkovic V, Mahaffey KW, et al.; CANVAS Program Collaborative Group. Canagliflozin and cardiovascular and renal events in type 2 diabetes. *N Engl J Med* 2017;377:644–657
33. Jardine MJ, Zhou Z, Mahaffey KW, et al.; CREDESCENCE Study Investigators. Renal, cardiovascular, and safety outcomes of canagliflozin by baseline kidney function: a secondary analysis of the CREDESCENCE randomized trial. *J Am Soc Nephrol* 2020;31:1128–1139