

Supplementary Online Content

Yosipovitch G, Mills KC, Nattkemper LA, et al. Association of pain and itch with depth of invasion and inflammatory cell constitution in skin cancer: results of a large clinicopathologic study. *JAMA Dermatol*. Published online July 23, 2014. doi: 10.1001/jamadermatol.2014.895.

eTable 1. Frequency of Itch and Pain in All Cancer Types

eTable 2. Frequency of Itch and Pain by Neoplasm Type

eTable 3. Comparison of Itch VAS Scores for Lesions That Report Itch and Pain to Those With Itch Only

eFigure 1. Consort Flow Diagram

eFigure 2. Representative Images of Inflammation Type With Cancer Type

This supplementary material has been provided by the authors to give readers additional information about their work.

eTable 1. Frequency of Itch and Pain in All Cancer Types

	Frequency	Percent
Pain with no Itch	38	11.28
Itch with no Pain	68	20.18
Itch and Pain	57	16.91

¹Frequency of 2 missing, due to no reported VAS scores.

eTable 2. Frequency of Itch and Pain by Neoplasm Type

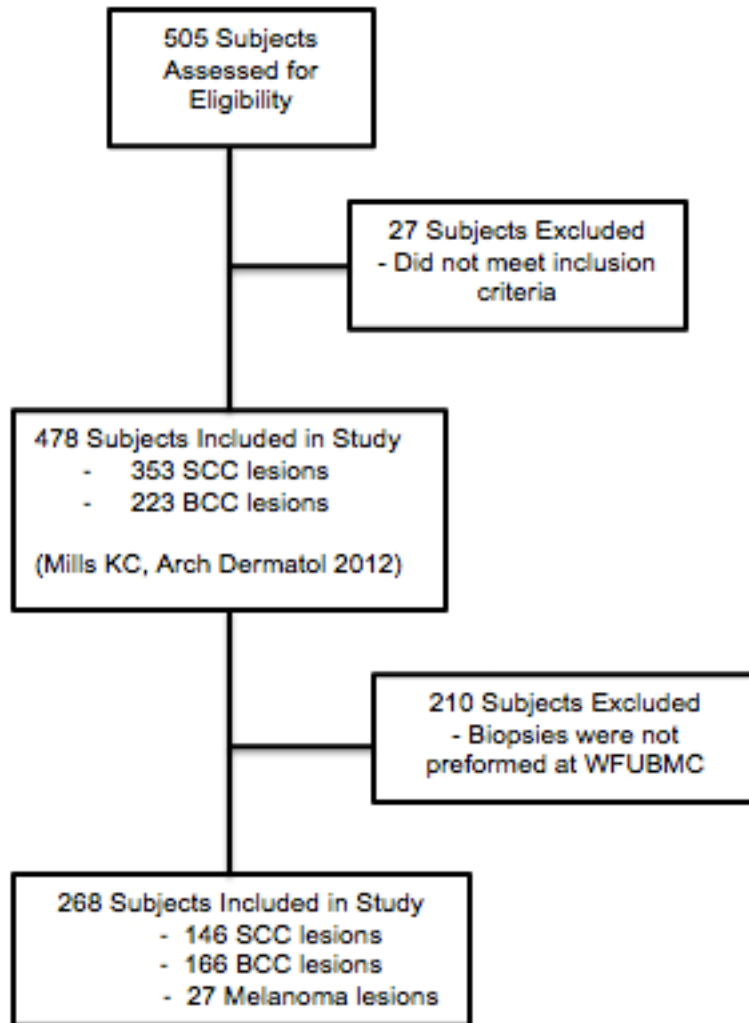
	Basal	Squamous	Melanoma	Total
No Itch, No Pain	99	52	23	174
Pain with no Itch	13	25	0	38
Itch with no Pain	33	32	3	68
Itch and Pain	20	36	1	57
Total	165	145	27	337

Frequency of 2 missing, due to no reported VAS scores.

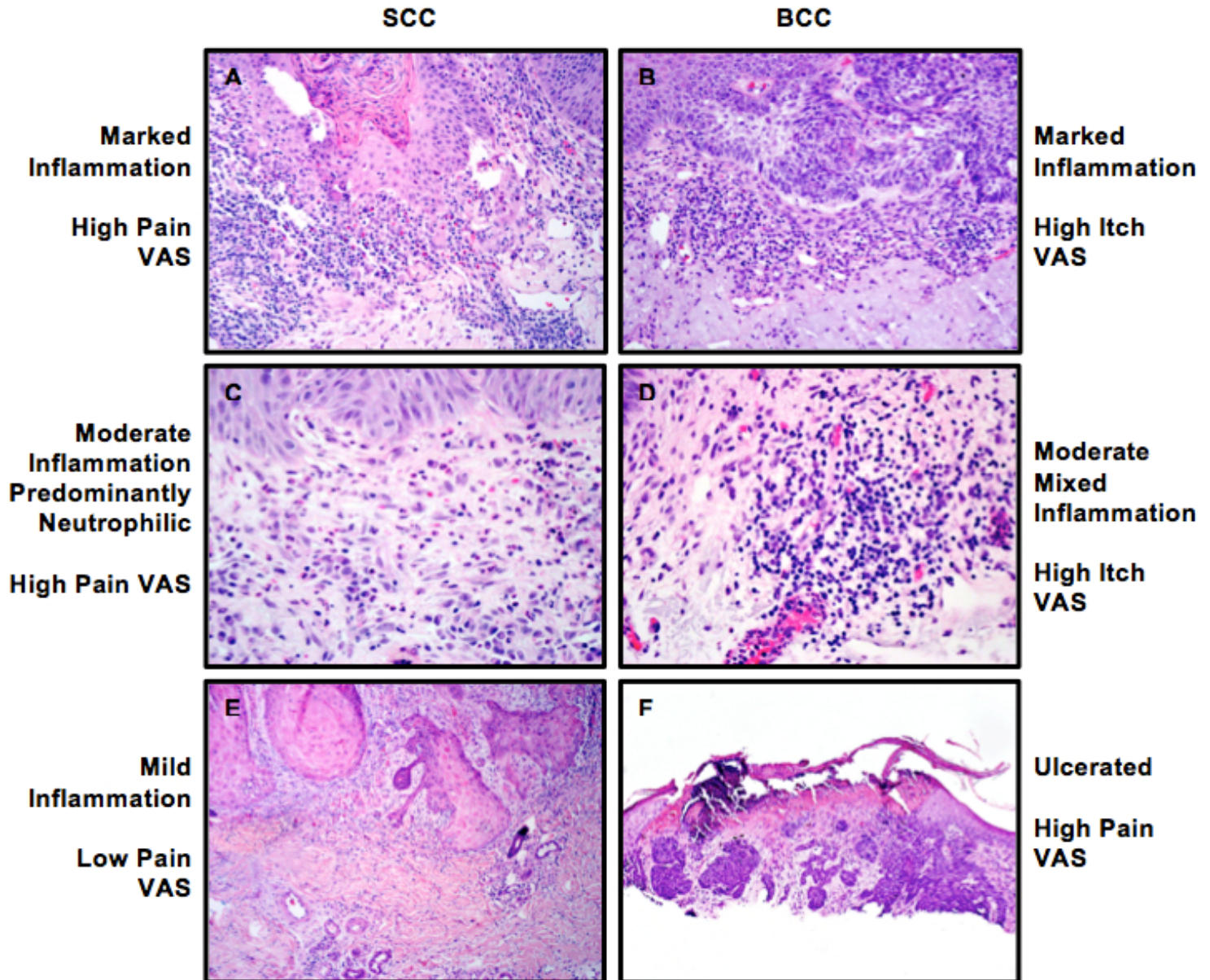
eTable 3. Comparison of Itch VAS Ratings for Lesions That Report Itch and Pain to Those With Itch Only

	N	Mean Itch VAS	Std Dev	Minimum	Maximum
All Cancer Types					
Itch with no Pain	68	3.78	1.98	1.00	8.00
Itch and Pain	57	3.93	2.12	1.00	9.00
BCC					
Itch with no Pain	33	3.48	1.82	1.00	8.00
Itch and Pain	20	4.20	2.04	1.00	8.00
SCC					
Itch with no Pain	32	4.19	2.10	1.00	8.00
Itch and Pain	36	3.75	2.20	1.00	9.00
Melanoma					
Itch and Pain	1	5.00		5.00	5.00

Consort Flow Diagram



eFigure1. Consort Flow Diagram. This study included subjects from a previous study that had their lesions biopsied at Wake Forest Baptist Medical Center (WFUBMC).



eFigure 2. Representative Images of Inflammation Type With Cancer Type. (A) 20x representative image of a SCC in situ with an eosinophilic and lymphohistiocytic infiltrate that was scored as "Markedly Inflamed." (B) 40x representative image of a superficial BCC with a lymphohistiocytic infiltrate that was scored as "Markedly Inflamed." (C) 40x representative image of a SCC in situ with a significantly neutrophilic (>5%) infiltrate that was scored as "Moderately Inflamed." (D) 40x representative image of a superficial BCC with a mixed (neutrophilic and lymphohistiocytic) inflammatory infiltrate that was scored as "Moderately Inflamed." (E) 20x representative image of an invasive SCC with very little inflammation that was scored as "Mildly Inflamed." (F) 10x representative image of an ulcerated BCC.