

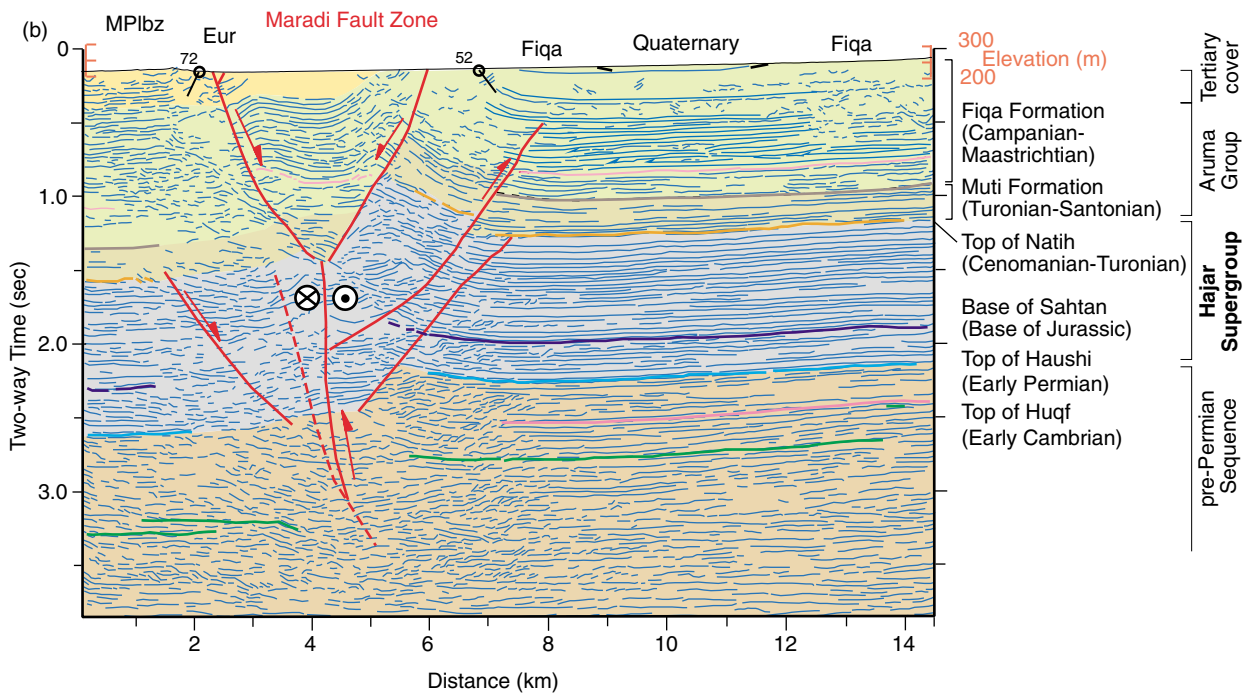
## ERRATA

*GeoArabia*, vol. 7, no. 1, p. 47–78.

### A crustal transect across the Oman Mountains on the eastern margin of Arabia

Ali I. Al-Lazki, Dogan Seber, Eric Sandvol and Muawia Barazangi  
(Cornell University)

1. Figure 7b, p. 57 was inadvertently printed without the fault lines and some of the seismic marker reflector lines. A new version of Figure 7b is printed below.



**Figure 7: (a) Migrated 2-D seismic reflection profile of line S50274 crossing the Maradi Fault Zone (see Figure 3 for location). (b) An interpretation of seismic line S50274 showing marker reflectors and relative motion within the Maradi Fault Zone. The fault zone has two styles of deformation: a strike-slip component (flower structure) and a reverse component inferred from the depth difference of the Natih Formation reflector (orange line) across the fault zone. Dip information is shown at surface in (b). MPIbz = Miocene-Pliocene Berzman Formation; Eur = Eocene Umm Er Radhuma Formation. Wrench faults: away from observer ⊗; toward observer ⊙.**

2. The e-mail addresses of three of the authors were given incorrectly on p. 78. The correct e-mail addresses are;

Ali I. Al-Lazki : aia2@cornell.edu  
Dogan Seber : seber@geology.cornell.edu  
Eric Sandvol : sandvol@geology.cornell.edu

*GeoArabia* apologizes for these errors.