

The regional seismic traverse in Figure 4 was printed without the time scale, GeoArabia apologizes for this oversight.

Geological Evolution of the Central Marib-Shabwa Basin, Yemen

Joe Brannan, Nimir Petroleum Ltd.,
Gurdip Sahota, Oryx Energy Company,
Keith D. Gerdes, Triton Resources (UK) Ltd.
and Jonathan A.L. Berry, Shell UK Exploration and Production

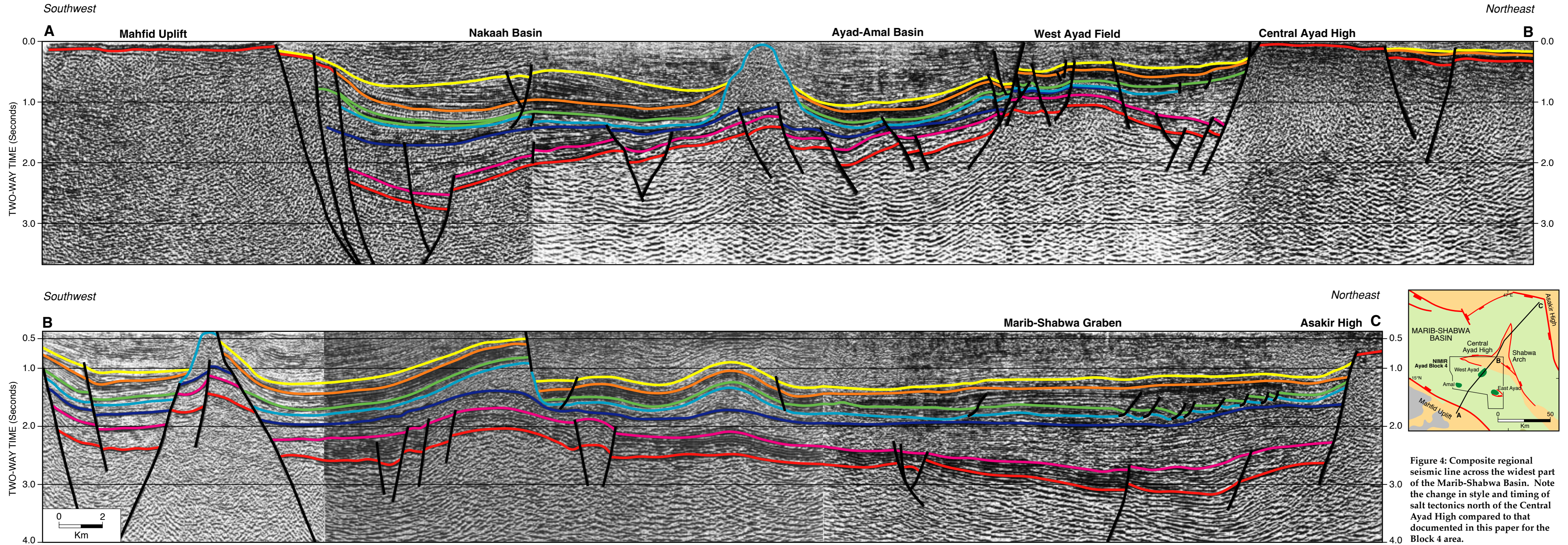


Figure 4: Composite regional seismic line across the widest part of the Marib-Shabwa Basin. Note the change in style and timing of salt tectonics north of the Central Ayad High compared to that documented in this paper for the Block 4 area.