

# Different loop arrangements of intramolecular human telomeric (3+1) G-quadruplexes in K<sup>+</sup> solution

Anh Tuân Phan\*, Kim Ngoc Luu and Dinshaw J. Patel\*

Structural Biology Program, Memorial Sloan-Kettering Cancer Center, New York, NY 10021, USA

Received August 1, 2006; Revised September 18, 2006; Accepted September 19, 2006

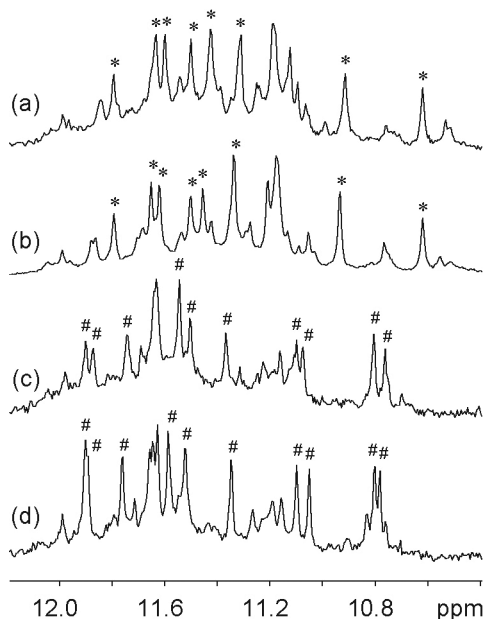
## ABSTRACT

Intramolecular G-quadruplexes formed by the human telomeric G-rich strand are promising anticancer targets. Here we show that four-repeat human telomeric DNA sequences can adopt two different intramolecular G-quadruplex folds in K<sup>+</sup> solution. The two structures contain the (3+1) G-tetrad core, in which three G-tracts are oriented in one direction and the fourth in the opposite direction, with one double-chain-reversal and two edgewise loops, but involve different loop

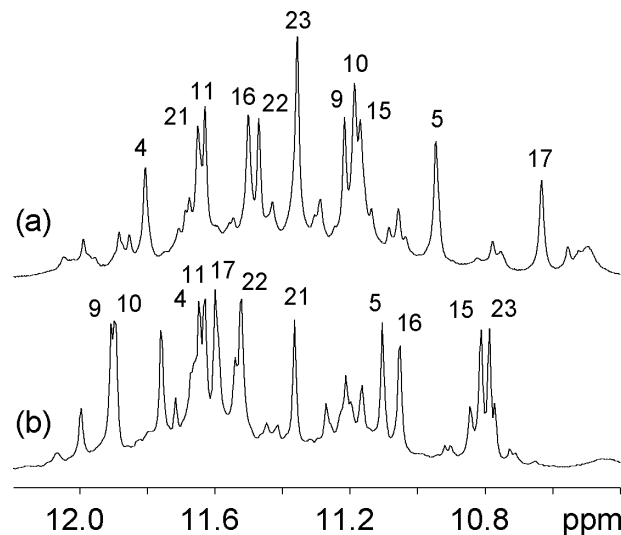
arrangements. This result indicates the robustness of the (3+1) core G-quadruplex topology, thereby suggesting it as an important platform for structure-based drug design. Our data also support the view that multiple human telomeric G-quadruplex conformations coexist in K<sup>+</sup> solution. Furthermore, even small changes to flanking sequences can perturb the equilibrium between different coexisting G-quadruplex forms.

## INTRODUCTION

Telomeres, the ends of eukaryotic chromosomes, are important for chromosome stability (1–3). Human telomeric DNA, ~4–14 kb long (4), is composed of (TTAGGG/CCCTAA)<sub>n</sub> repeats, with a 100–200 nt G-rich strand



**Figure 1.** Examples of imino proton spectra of human telomeric sequences in K<sup>+</sup> solution showing recognizable spectral patterns of two different G-quadruplex forms (labeled with asterisk (\*) and hash (#), respectively): (a) d[TTAGGG(TTAGGG)<sub>3</sub>TT], (b) d[TTAGGG(TTAGGG)<sub>3</sub>TT], (c) d[TTAGGG(TTAGGG)<sub>3</sub>] and (d) d[TTAGGG(TTAGGG)<sub>3</sub>].



**Figure 2.** Imino proton spectra of human telomeric sequences in K<sup>+</sup> solution, (a) d[TTAGGG(TTAGGG)<sub>3</sub>TT] and (b) d[TTAGGG(TTAGGG)<sub>3</sub>] (34). In each case, peaks for the major form are labeled with residue numbers obtained from unambiguous assignments.

\*To whom correspondence should be addressed. Tel: +65 6514 1915; Fax: +65 6794 1325; Email: phantuan@ntu.edu.sg

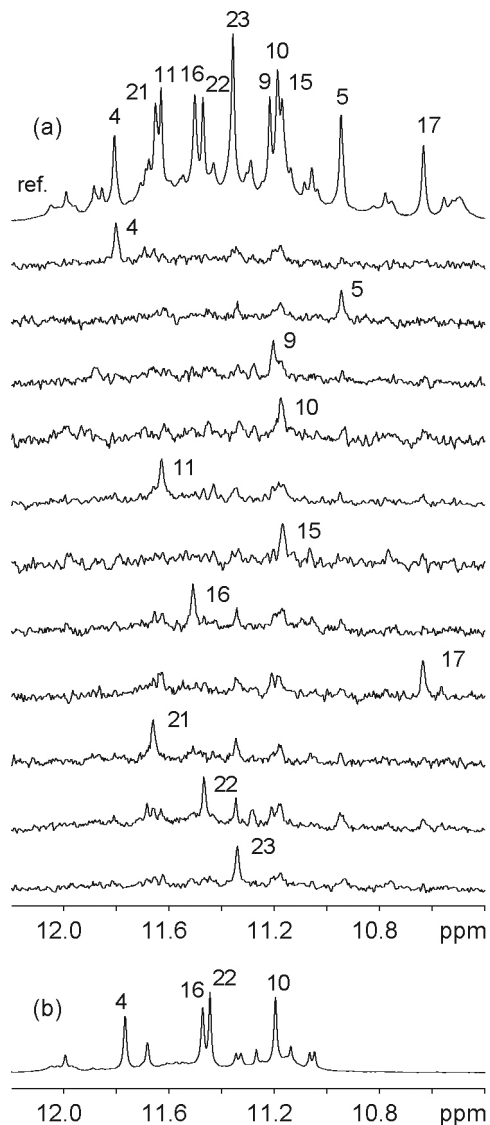
\*Correspondence may also be addressed to Dinshaw J. Patel at: Structural Biology Program, Memorial Sloan-Kettering Cancer Center, Box 557, 1275 York Avenue, New York, NY 10021, USA. Tel: +1 212 639 7207; Fax: +1 212 717 3066; Email: pateld@mskcc.org

Present address:

Anh Tuân Phan, Division of Physics and Applied Physics, School of Physical and Mathematical Sciences, Nanyang Technological University, SBS B3n-16, Singapore 637551

© 2006 The Author(s).

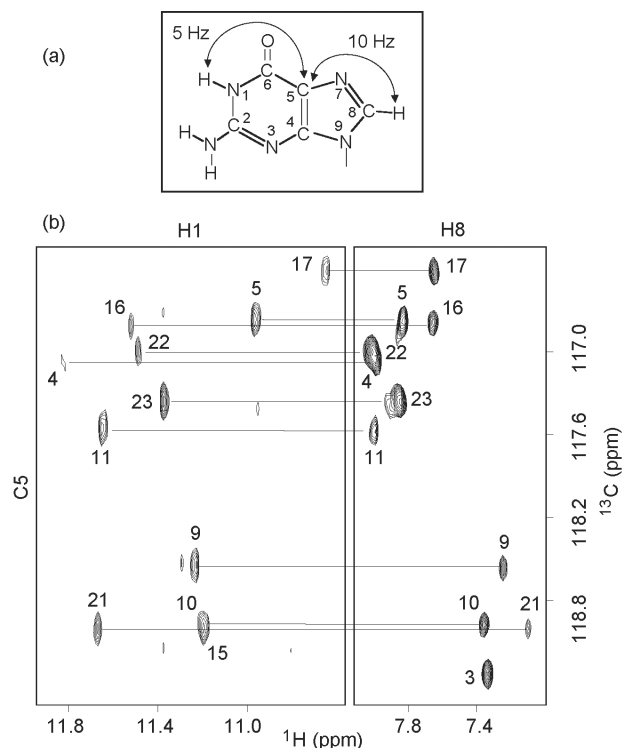
This is an Open Access article distributed under the terms of the Creative Commons Attribution Non-Commercial License (<http://creativecommons.org/licenses/by-nc/2.0/uk/>) which permits unrestricted non-commercial use, distribution, and reproduction in any medium, provided the original work is properly cited.



**Figure 3.** Imino proton spectra and assignments of the 25-nt human telomeric d[TAGGG(TTAGGG)<sub>3</sub>TT] sequence in K<sup>+</sup> solution. (a) Guanine imino proton spectra with assignments over the reference spectrum (ref). Imino protons were assigned in <sup>15</sup>N-filtered spectra of samples, 2% <sup>15</sup>N-labeled at the indicated positions. (b) Imino proton spectra after 1 h in D<sub>2</sub>O at 25°C.

overhang at 3' ends (5–7). Telomerase, an enzyme that can elongate this strand, is not activated in normal human somatic cells, but highly expressed in 80–85% cancer cells and helps to maintain the length of telomeres in these cells (8). G-rich sequences can form G-quadruplex structures (9–11) stabilized by cations such as Na<sup>+</sup> or K<sup>+</sup>. Intramolecular G-quadruplexes formed by the human telomeric G-rich strand are promising anticancer targets (1–3), as formation of such structures has been shown to inhibit the activity of telomerase (12–14).

The structure of intramolecular human telomeric G-quadruplexes is the subject of intense research (15–33) but still puzzling. Until recently only Na<sup>+</sup> solution (15) and K<sup>+</sup>-containing crystal (16) structures were available and these structures are very different from each other. In the former structure (15), guanines around each tetrad are



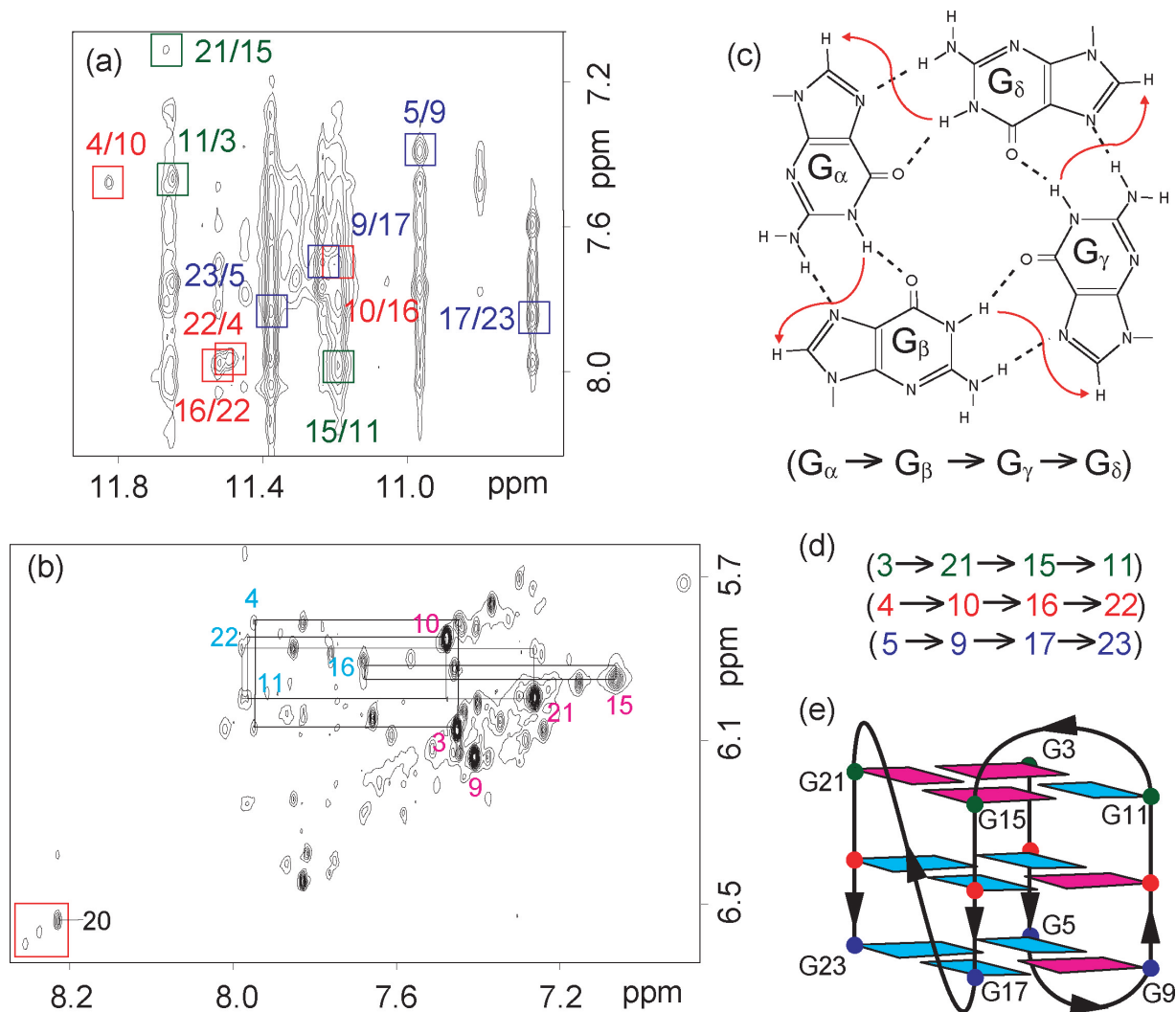
**Figure 4.** H8 proton assignments of the 25-nt human telomeric d[TAGGG(TTAGGG)<sub>3</sub>TT] sequence. (a) Long range J-couplings in a guanine. (b) Through-bond correlations between guanine imino and H8 protons via <sup>13</sup>C5 at natural abundance, using long range J-couplings shown in (a).

*syn•syn•anti•anti*, loops are successively edgewise–diagonal–edgewise and each G-tract has both a parallel and an antiparallel adjacent strands. In contrast, the crystal structure in the presence of K<sup>+</sup> revealed a completely different intramolecular G-quadruplex (16), in which all strands are parallel, guanines are *anti* and loops are double-chain-reversal. Because K<sup>+</sup> is much more abundant than Na<sup>+</sup> in cellular environments, the structure of telomeric G-quadruplexes in K<sup>+</sup> solution is most important. Data from many laboratories (17–33) indicated the presence of a mixture of several G-quadruplex forms in K<sup>+</sup> solution. Recently, we (34) and others (35,36) reported the folding topology of an intramolecular human telomeric G-quadruplex (Form 1) in K<sup>+</sup> solution, with our group also reporting on its solution structure (34). This so-called (3+1) G-quadruplex involves the following: one *anti•syn•syn•syn* and two *syn•anti•anti•anti* G-tetrads; one double-chain-reversal loop formed by the first TTA linker and two other edgewise loops; three G-tracts oriented in one direction and the fourth in the opposite direction. Here we report on a new intramolecular human telomeric G-quadruplex in K<sup>+</sup> solution. Intriguingly, this structure contains the same (3+1) core but differs from Form 1 by loop arrangements.

## MATERIALS AND METHODS

### Sample preparation

Unlabeled and site-specific low-enrichment (2% <sup>15</sup>N-labeled) oligonucleotides were synthesized on an ABI 392 DNA



**Figure 5.** Determination of G-quadruplex topology for the 25-nt human telomeric d[TAGGG(TTAGGG)<sub>3</sub>TT] sequence in K<sup>+</sup> solution. (a) NOESY spectrum (mixing time, 200 ms). Imino-H8 cross peaks that identify three G-tetrads (colored green, red and blue) are framed and labeled with the number of imino protons in the first position and that of H8 in the second position. (b) NOESY spectrum (mixing time, 100 ms). Rectangular H8-H1' patterns for 5'-*syn-anti-3'* steps are highlighted by black lines. Downfield-shifted peaks for A(H8-H1') are framed in a red box. Some peaks of G3 and G15 in (a) and (b) are broadened at 25°C, probably reflecting a motion at the top of the structure. (c) Characteristic guanine imino-H8 NOE connectivity patterns around a G<sub>α</sub>•G<sub>β</sub>•G<sub>γ</sub>•G<sub>δ</sub> tetrad as indicated with arrows (connectivity between G<sub>δ</sub> and G<sub>α</sub> implied). (d) Characteristic guanine imino-H8 NOE connectivities observed for G<sub>3</sub>•G<sub>21</sub>•G<sub>15</sub>•G<sub>11</sub> (green), G<sub>4</sub>•G<sub>10</sub>•G<sub>16</sub>•G<sub>22</sub> (red) and G<sub>5</sub>•G<sub>9</sub>•G<sub>17</sub>•G<sub>23</sub> (blue) tetrads. (e) Schematic structure of Form 2 human telomeric G-quadruplex. *anti* and *syn* guanines are colored cyan and magenta, respectively.

synthesizer and purified by HPLC (17). They were dialyzed successively against 50 mM KCl solution and against water. The strand concentration of the NMR samples was typically 0.5–5 mM; the solutions contained 70 mM KCl and 20 mM potassium phosphate (pH 7).

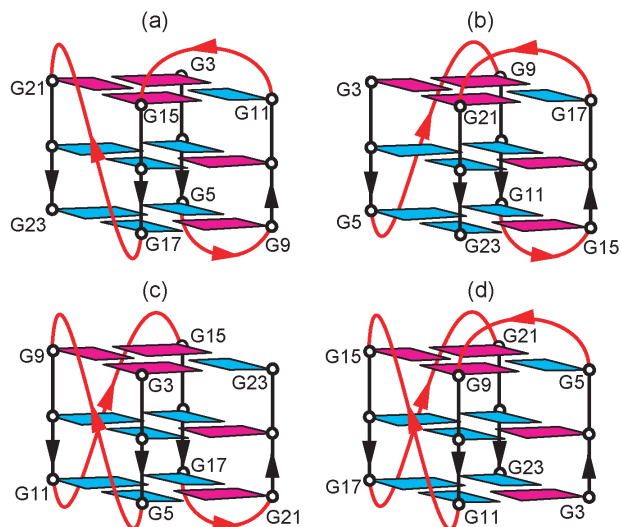
### NMR spectroscopy

Experiments were performed on 600 MHz Varian and 800 MHz Bruker spectrometers at 25°C. Resonances were assigned unambiguously by using site-specific low-enrichment labeling and through-bond correlations at natural abundance (37–39). Experiments in H<sub>2</sub>O used the jump-and-return (JR) water suppression (39,40) for detection.

## RESULTS AND DISCUSSION

### Favoring a new G-quadruplex conformation

We systematically examined NMR spectra of human telomeric sequences (21–27 nt) containing four G-tracts and found that in all cases there were mixtures of multiple G-quadruplexes in K<sup>+</sup> solution. However, certain spectral patterns could be recognized (Figure 1), which were apparently characteristic for different G-quadruplex forms, and the ratio between these forms varied among sequences (Figure 1). Possibly, some terminal residues could favor or disfavor a particular form by interacting with the loops (34). Indeed, NMR spectra (Figure 2) suggested that the 25-nt human telomeric d[TAGGG(TTAGGG)<sub>3</sub>TT] sequence adopts predominantly (~70%) a G-quadruplex in K<sup>+</sup> solution,



**Figure 6.** Schematic structures of possible intramolecular human telomeric (3+1) G-quadruplexes. (a) Form 2 observed for the d[ $\text{TAGGG}(\text{T-TAGGG})_3\text{TT}$ ] sequence in  $\text{K}^+$  solution (this work). (b) Form 1 observed for the d[ $\text{TAGGG}(\text{TTAGGG})_3$ ] sequence in  $\text{K}^+$  solution (34). (c and d) Models of intramolecular (3+1) G-quadruplexes with two double-chain-reversal loops. Loops are colored red; *anti* and *syn* guanines are colored cyan and magenta, respectively.

which is different from Form 1, the major form of the 23-nt human telomeric d[ $\text{TAGGG}(\text{TTAGGG})_3$ ] sequence reported previously (34).

#### Determination of G-quadruplex folding topology

Sharp linewidths ( $\sim 2\text{--}3$  Hz for the sharpest peaks at  $25^\circ\text{C}$ ) of the major form of this 25-nt sequence are consistent with a monomeric intramolecular G-quadruplex. Guanine imino protons were unambiguously assigned by the site-specific low-enrichment approach (37) using 2%  $^{15}\text{N}$ -labeled samples (Figure 3). Guanine H8 protons were assigned by natural-abundant through-bond correlations (38) to the already assigned imino protons (Figure 4). Some H8 proton assignments were independently confirmed in site-specific 2%  $^{15}\text{N}$ -labeled samples (37) (data not shown). Specific NOEs between imino and H8 protons (Figure 5a, c and d), established the fold (Form 2) of this G-quadruplex (Figure 5e), involving three G-tetrads: G3•G21•G15•G11, G4•G10•G16•G22 and G5•G9•G17•G23. The third linker T18-T19-A20 forms a double-chain-reversal loop, while the two other linkers T6-T7-A8 and T12-T13-A14 form edgewise loops. The G-tetrad core is of (3+1)-type (34,41–43), in which three G-tracts are oriented in one direction and the fourth in the opposite direction. The glycosidic conformations of the top G-tetrad are *anti*•*syn*•*syn*•*syn*, those of the two others are *syn*•*anti*•*anti*•*anti*, consistent with H1'-H8 NOE intensities observed for these residues (Figure 5b). This G-quadruplex fold is also consistent with other NOEs, such as the rectangular H8–H1' patterns (44) (Figure 5b) of four 5'-*syn*-*anti*-3' steps in the structure (Figure 5e). The G-quadruplex fold was supported by proton exchange data, which showed that imino protons of the central G-tetrad are the most protected from exchange with water (Figure 3b).

#### Comparison with related G-quadruplex structures

Like Form 1, Form 2 human telomeric G-quadruplex observed in  $\text{K}^+$  solution here (Figure 5e) is very different from the structures observed in  $\text{Na}^+$  solution or in a  $\text{K}^+$ -containing crystal, in terms of strand orientations, loop topologies and glycosidic conformations of guanines. Form 2 (Figure 6a) differs from Form 1 (Figure 6b) by loop arrangements: the double-chain-reversal loop is formed by the third linker instead of the first linker. The folding topology of Form 2 is similar to the (3+1) G-quadruplex formed by the four-repeat *Tetrahymena* telomeric sequence (42) and by a variant sequence of four G-tracts from the human *bcl-2* promoter (43). The three-repeat human telomeric sequence adopts a (3+1) G-quadruplex with yet another loop arrangement (41).

#### Possible intramolecular (3+1) G-quadruplexes

Figure 6 shows four possible intramolecular human telomeric (3+1) G-quadruplexes, in which the 5' end starts from different corners of the same G-tetrad core. It is worth mentioning that NMR spectra of the human telomeric d[ $\text{TAGGG}(\text{T-TAGGG})_3\text{TT}$ ] sequence show a downfield-shifted peak for A20(H8-H1') of Form 2 together with two other downfield-shifted minor A(H8-H1') peaks (red box, Figure 5b), which are characteristic of an adenine in the double-chain-reversal TTA loop (34). It is likely that the latter belong to minor species that contain double-chain-reversal loops, such as the parallel-stranded G-quadruplex observed in a  $\text{K}^+$ -containing crystal (16) or possibly different (3+1) G-quadruplex conformations shown in Figure 6.

#### CONCLUSION

We have determined the folding topology of a new intramolecular G-quadruplex conformation of the human telomere in  $\text{K}^+$  solution. Taken together with recent findings (34–36), this work has established that four-repeat human telomeric sequences can form two intramolecular (3+1) G-quadruplexes in  $\text{K}^+$  solution, which differ from each other only by the order of loop arrangements. This indicates the robustness of the (3+1) core G-quadruplex topology, first reported a decade ago (42), thereby suggesting it as an important platform for structure-based drug design. The presence of a mixture of multiple G-quadruplexes and the differential effects of terminal residues (or possible attached dyes) on the stability of different forms should be considered when one studies telomeric G-quadruplexes.

#### ACKNOWLEDGEMENTS

This research was supported by National Institutes of Health Grant GM34504. D.J.P. is a member of the New York Structural Biology Center supported by National Institutes of Health Grant GM66354. Funding to pay the Open Access publication charges for this article was provided by National Institutes of Health Grant GM34504.

*Conflict of interest statement.* None declared.

## REFERENCES

- Neidle, S. and Parkinson, G. (2002) Telomere maintenance as a target for anticancer drug discovery. *Nature Rev. Drug. Discov.*, **1**, 383–393.
- Hurley, L.H. (2002) DNA and its associated processes as targets for cancer therapy. *Nature Rev. Cancer*, **2**, 188–200.
- Mergny, J.L., Riou, J.F., Mailliet, P., Teulade-Fichou, M.P. and Gilson, E. (2002) Natural and pharmacological regulation of telomerase. *Nucleic Acids Res.*, **30**, 839–865.
- de Lange, T., Shiue, L., Myers, R.M., Cox, D.R., Naylor, S.L., Killery, A.M. and Varmus, H.E. (1990) Structure and variability of human chromosome ends. *Mol. Cell. Biol.*, **10**, 518–527.
- Makarov, V.L., Hirose, Y. and Langmore, J.P. (1997) Long G tails at both ends of human chromosomes suggest a C strand degradation mechanism for telomere shortening. *Cell*, **88**, 657–666.
- McElligott, R. and Wellinger, R.J. (1997) The terminal DNA structure of mammalian chromosomes. *EMBO J.*, **16**, 3705–3714.
- Wright, W.E., Tesmer, V.M., Huffman, K.E., Levene, S.D. and Shay, J.W. (1997) Normal human chromosomes have long G-rich telomeric overhangs at one end. *Genes Dev.*, **11**, 2801–2809.
- Kim, N.W., Piatyszek, M.A., Prowse, K.R., Harley, C.B., West, M.D., Ho, P.L., Coviello, G.M., Wright, W.E., Weinrich, S.L. and Shay, J.W. (1994) Specific association of human telomerase activity with immortal cells and cancer. *Science*, **266**, 2011–2015.
- Simonsson, T. (2001) G-quadruplex DNA structures - variations on a theme. *Biol. Chem.*, **382**, 621–628.
- Davis, J.T. (2004) G-quartets 40 years later: from 5'-GMP to molecular biology and supramolecular chemistry. *Angew. Chem. Int. Ed. Engl.*, **43**, 668–698.
- Phan, A.T., Kuryavyy, V. and Patel, D.J. (2006) DNA architecture: from G to Z. *Curr. Opin. Struct. Biol.*, **16**, 288–298.
- Zahler, A.M., Williamson, J.R., Cech, T.R. and Prescott, D.M. (1991) Inhibition of telomerase by G-quartet DNA structures. *Nature*, **350**, 718–720.
- Zaug, A.J., Podell, E.R. and Cech, T.R. (2005) Human POT1 disrupts telomeric G-quadruplexes allowing telomerase extension *in vitro*. *Proc. Natl Acad. Sci. USA*, **102**, 10864–10869.
- Oganesian, L., Moon, I.K., Bryan, T.M. and Jarstfer, M.B. (2006) Extension of G-quadruplex DNA by ciliate telomerase. *EMBO J.*, **25**, 1148–1159.
- Wang, Y. and Patel, D.J. (1993) Solution structure of the human telomeric repeat d[AG<sub>3</sub>(T<sub>2</sub>AG<sub>3</sub>)<sub>3</sub>] G-tetraplex. *Structure*, **1**, 263–282.
- Parkinson, G.N., Lee, M.P.H. and Neidle, S. (2002) Crystal structure of parallel quadruplexes from human telomeric DNA. *Nature*, **417**, 876–880.
- Phan, A.T. and Patel, D.J. (2003) Two-repeat human telomeric d(TAGGGTTAGGGT) sequence forms interconverting parallel and antiparallel G-quadruplexes in solution: distinct topologies, thermodynamic properties, and folding/unfolding kinetics. *J. Am. Chem. Soc.*, **125**, 15021–15027.
- Ying, L., Green, J.J., Li, H., Klenerman, D. and Balasubramanian, S. (2003) Studies on the structure and dynamics of the human telomeric G quadruplex by single-molecule fluorescence resonance energy transfer. *Proc. Natl Acad. Sci. USA*, **100**, 14629–14634.
- Redon, S., Bombard, S., Elizondo-Riojas, M.A. and Chottard, J.C. (2003) Platinum cross-linking of adenines and guanines on the quadruplex structures of the AG<sub>3</sub>(T<sub>2</sub>AG<sub>3</sub>)<sub>3</sub> and (T<sub>2</sub>AG<sub>3</sub>)<sub>4</sub> human telomere sequences in Na<sup>+</sup> and K<sup>+</sup> solutions. *Nucleic Acids Res.*, **31**, 1605–1613.
- He, Y., Neumann, R.D. and Panyutin, I.G. (2004) Intramolecular quadruplex conformation of human telomeric DNA assessed with <sup>125</sup>I-radioprobe. *Nucleic Acids Res.*, **32**, 5359–5367.
- Xu, Y. and Sugiyama, H. (2004) Highly efficient photochemical 2'-deoxyribonolactone formation at the diagonal loop of a 5-iodouracil-containing antiparallel G-quartet. *J. Am. Chem. Soc.*, **126**, 6274–6279.
- D'Isa, G., Galeone, A., Oliviero, G., Piccialli, G., Varra, M. and Mayol, L. (2004) Effect of gamma-hydroxypropano deoxyguanosine, the major acrolein-derived adduct, on monomolecular quadruplex structure of telomeric repeat d(TTAGGG)<sub>4</sub>. *Bioorg. Med. Chem. Lett.*, **14**, 5417–5421.
- Hazel, P., Huppert, J., Balasubramanian, S. and Neidle, S. (2004) Loop-length-dependent folding of G-quadruplexes. *J. Am. Chem. Soc.*, **126**, 16405–16415.
- Risitano, A. and Fox, K.R. (2005) Inosine substitutions demonstrate that intramolecular DNA quadruplexes adopt different conformations in the presence of sodium and potassium. *Bioorg. Med. Chem. Lett.*, **15**, 2047–2050.
- Rezler, E.M., Seenisamy, J., Bashyam, S., Kim, M.Y., White, E., Wilson, W.D. and Hurley, L.H. (2005) Telomestatin and diseleno saphyrin bind selectively to two different forms of the human telomeric G-quadruplex structure. *J. Am. Chem. Soc.*, **127**, 9439–9447.
- Rujan, I.N., Meloney, J.C. and Bolton, P.H. (2005) Vertebrate telomere repeat DNAs favor external loop propeller quadruplex structures in the presence of high concentrations of potassium. *Nucleic Acids Res.*, **33**, 2022–2031.
- Wlodarczyk, A., Grzybowski, P., Patkowski, A. and Dobek, A. (2005) Effect of ions on the polymorphism, effective charge, and stability of human telomeric DNA. Photon correlation spectroscopy and circular dichroism studies. *J. Phys. Chem. B*, **109**, 3594–3605.
- Qi, J. and Shafer, R.H. (2005) Covalent ligation studies on the human telomere quadruplex. *Nucleic Acids Res.*, **33**, 3185–3192.
- Vorlickova, M., Chladkova, J., Kejnovska, I., Fialova, M. and Kypr, J. (2005) Guanine tetraplex topology of human telomere DNA is governed by the number of (TTAGGG) repeats. *Nucleic Acids Res.*, **33**, 5851–5860.
- Ourliac-Garnier, I., Elizondo-Riojas, M.A., Redon, S., Farrell, N.P. and Bombard, S. (2005) Cross-links of quadruplex structures from human telomeric DNA by dinuclear platinum complexes show the flexibility of both structures. *Biochemistry*, **44**, 10620–10634.
- Li, J., Correia, J.J., Wang, L., Trent, J.O. and Chaires, J.B. (2005) Not so crystal clear: the structure of the human telomere G-quadruplex in solution differs from that present in a crystal. *Nucleic Acids Res.*, **33**, 4649–4659.
- Lee, J.Y., Okumus, B., Kim, D.S. and Ha, T. (2005) Extreme conformational diversity in human telomeric DNA. *Proc. Natl Acad. Sci. USA*, **102**, 18938–18943.
- Jaumot, J., Eritja, R., Tauler, R. and Gargallo, R. (2006) Resolution of a structural competition involving dimeric G-quadruplex and its C-rich complementary strand. *Nucleic Acids Res.*, **34**, 206–216.
- Luu, K.N., Phan, A.T., Kuryavyy, V., Lacroix, L. and Patel, D.J. (2006) Structure of the human telomere in K<sup>+</sup> solution: an intramolecular (3 + 1) G-quadruplex scaffold. *J. Am. Chem. Soc.*, **128**, 9963–9970.
- Ambrus, A., Chen, D., Dai, J., Bialis, T., Jones, R.A. and Yang, D. (2006) Human telomeric sequence forms a hybrid-type intramolecular G-quadruplex structure with mixed parallel/antiparallel strands in potassium solution. *Nucleic Acids Res.*, **34**, 2723–2735.
- Xu, Y., Noguchi, Y. and Sugiyama, H. (2006) The new models of the human telomere d[AGGG(TTAGGG)<sub>3</sub>] in K<sup>+</sup> solution. *Bioorg. Med. Chem.*, **14**, 5584–5591.
- Phan, A.T. and Patel, D.J. (2002) A site-specific low-enrichment <sup>15</sup>N, <sup>13</sup>C isotope-labeling approach to unambiguous NMR spectral assignments in nucleic acids. *J. Am. Chem. Soc.*, **124**, 1160–1161.
- Phan, A.T. (2000) Long-range imino proton-<sup>13</sup>C J-couplings and the through-bond correlation of imino and non-exchangeable protons in unlabeled DNA. *J. Biomol. NMR*, **16**, 175–178.
- Phan, A.T., Guéron, M. and Leroy, J.L. (2001) Investigation of unusual DNA motifs. *Methods Enzymol.*, **338**, 341–371.
- Plateau, P. and Guéron, M. (1982) Exchangeable proton NMR without base-line distortion using strong pulse sequences. *J. Am. Chem. Soc.*, **104**, 7310–7311.
- Zhang, N., Phan, A.T. and Patel, D.J. (2005) (3 + 1) Assembly of three human telomeric repeats into an asymmetric dimeric G-quadruplex. *J. Am. Chem. Soc.*, **127**, 17277–17285.
- Wang, Y. and Patel, D.J. (1994) Solution structure of the *Tetrahymena* telomeric repeat d(T<sub>2</sub>G<sub>4</sub>)<sub>4</sub> G-tetraplex. *Structure*, **2**, 1141–1156.
- Dai, J., Dexheimer, T.S., Chen, D., Carver, M., Ambrus, A., Jones, R.A. and Yang, D. (2006) An intramolecular G-quadruplex structure with mixed parallel/antiparallel G-strands formed in the human BCL-2 promoter region in solution. *J. Am. Chem. Soc.*, **128**, 1096–1098.
- Feigon, J., Koshlap, K.M. and Smith, F.W. (1995) <sup>1</sup>H NMR spectroscopy of DNA triplexes and quadruplexes. *Methods Enzymol.*, **261**, 225–255.