



The Clay Minerals Society

www.clays.org

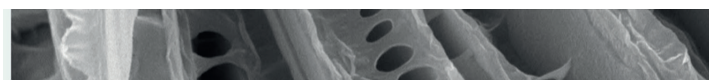
THE PRESIDENT'S CORNER



If you are reading this as a member of CMS, then I have a job for you. Please pass on details of the survey link below to any non-members you know that work with clays and ask them to complete it. The world of clays and clay minerals continues to stretch far and wide across many established and newly emerging research, technology, and industrial sectors, and as a Society we are keen to know: What it would take to encourage more clay-related

people to join our organisation, attend our conferences, submit papers to our journal, and nominate people for our awards? And of course, if you, one of these people with a connection to clays but not a member of CMS, are reading this, we would be delighted to hear your answers to our survey questions.

This will be the link: <https://forms.gle/rSN5m8wJTUSdUS597>.



Section 1 of 4

Clay Minerals Society non-member survey

The CMS would like to understand the needs of those clay mineralogists who have opted not to join our Society. Please take 5 min to complete our form. You could win a prize!

After section 1 Continue to next section

Section 2 of 4

Demographics

Description (optional)

1. Geographic location

Stephen Hillier, CMS President

JOURNAL ISSUE UPDATE

Here are some recent papers published at <https://www.springer.com/journal/42860>.

- **Molecular Modeling to Predict the Optimal Mineralogy of Smectites as Binders of Aflatoxin**, by Szczerba et al.
- **Effect of a Water Phase on the Swelling Pressure and Water Retention of an Unsaturated Bentonite–Sand Mixture with Insignificant Osmotic Suction**, by Lang and Baille.
- **Palygorskite Supporting Homogeneously Dispersed Ag Nanoparticles: Molten Salt Method and Enhanced Antibacterial Performance**, by He et al.

IMPORTANT REMINDER

Join CMS

Don't forget to renew your membership or join us! Please visit www.clays.org or contact the Business Office at cms@clays.org. There are tangible benefits to members. Additional benefits are also available for students, such as Student Research Grants (up to \$3000), Student Travel Awards (up to \$1000), and free access to the full text of *Clays and Clay Minerals*. Check out more benefits at https://www.clays.org/join_benefits_of_membership/.

YOUR SOCIETY YOUR VOTE

Vote in this year's election now. The deadline for voting is 1 May 2023. Follow the special button pasted on the home page: <https://www.clays.org/>.

Save the Date!

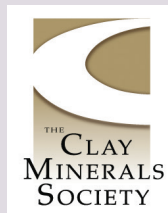
2023 The Clay Minerals Society Annual Meeting

UT Austin - JJ Pickle Research Campus - Commons Conference Center
10100 Burnet Road
Austin, TX 78758

May 20, 2023—May 25, 2023

DID YOU KNOW?

From CMS History



The CMS annual meeting and clay conference have a glorious history! The 1st Annual CMS meeting was held in conjunction with the 13th Annual Clay Minerals Conference in 1964 in Madison, WI, USA. This conference was a succession of the 1st National Conference of Clays and Clay Minerals in 1952, University of California at Berkeley, USA.