

Protection of CLL B cells by a follicular dendritic cell line is dependent on induction of Mcl-1

Irene M. Pedersen, Shinichi Kitada, Lorenzo M. Leoni, Juan M. Zapata, James G. Karras, Nobuhiro Tsukada, Thomas J. Kipps, Yong Sung Choi, Frank Bennett, and John C. Reed

Chronic lymphocytic leukemia (CLL) B cells have defects in apoptosis pathways and therefore accumulate in vivo. However, when removed from the patient and cultured in vitro, these malignant cells rapidly undergo apoptosis. Recent studies suggest that leukemia cell survival is influenced by interactions with nonleukemia cells in the microenvironment of lymph nodes, marrow, and other tissues. To model such cell-cell interactions in vitro, we cultured freshly isolated CLL B cells with a follicular dendritic cell line, HK. CLL B cells cocultured with HK cells were protected from apoptosis, either spontaneous or induced by treatment with anticancer drugs. Protection against spontaneous apoptosis could also be in-

duced by coculturing the CLL B cells with normal dendritic cells (DCs) or with a CD40-ligand (CD154)-expressing fibroblast cell line. Examination of the expression of several apoptosis-regulatory proteins revealed that coculture with HK cells or DCs induced up-regulation of the antiapoptotic Bcl-2 family protein Mcl-1 in CLL B cells, whereas CD40 ligation increased expression of Bcl-X_L. Cell-cell contact was required for HK-induced protection, and introducing neutralizing antibodies against various adhesion molecules showed that CD44 was involved in HK-mediated survival, whereas CD40, intercellular adhesion molecule-1 (ICAM-1) and vascular cell adhesion molecule-1 (VCAM-1) were not. Anti-CD44 antibodies

also blocked Mcl-1 induction by HK cells. Mcl-1 antisense oligonucleotides reduced leukemia cell expression of Mcl-1, and significantly suppressed HK-induced protection against apoptosis, whereas control oligonucleotides had no effect. Thus, HK cells protect CLL B cells against apoptosis, at least in part through a CD44-dependent mechanism involving up-regulation of Mcl-1, and this mechanism is distinct from that achieved by CD40 ligation. Consequently, the particular antiapoptotic proteins important for CLL survival may vary depending on the microenvironment. (Blood. 2002;100:1795-1801)

© 2002 by The American Society of Hematology

Introduction

B-cell chronic lymphocytic leukemia (B-CLL) is the most common form of leukemia in adults.^{1,2} Most of these neoplasms are of B-lymphocyte origin and express the CD5 antigen, in addition to other markers characteristic of mature B cells.^{1,3} B-CLL represents a quintessential example of a malignancy caused by defects in the regulation of programmed cell death (apoptosis) (reviewed in Dighiero et al⁴). Unlike normal B cells, which live only 5 to 7 days on average, the neoplastic cells of B-CLL are long lived, gradually accumulating in the patient's body owing primarily to failed cell turnover rather than rapid cell division.

Although CLL B cells exhibit characteristics consistent with prolonged cell survival in vivo, when cultured in vitro these cells often undergo spontaneous apoptosis.^{5,6} This observation suggests that the microenvironment that supports prolonged CLL B-cell survival in vivo is not generally recapitulated in vitro. Moreover, this phenomenon suggests that the selective survival advantage enjoyed by CLL B cells is not entirely autonomous, raising the possibility of manipulating CLL B-cell survival by iatrogenic means.

Modulators of CLL B-cell survival could include soluble factors or signals derived from cell-cell contact. Although several types of cells can potentially communicate with CLL B cells, a variety of studies have suggested a particularly important role for dendritic

cells.⁷ Using an immortalized, follicular dendritic cell line of tonsillar origin as a model, we explored some of the mechanisms by which such cells might support CLL B-cell survival. Our findings reveal a cell-based pathway for enhanced CLL B-cell survival, which is dependent on cell contact and induction of expression of the antiapoptotic protein Mcl-1.

Patients, materials, and methods

Patient specimens

Heparinized peripheral blood was obtained from patients diagnosed with CLL according to standard criteria.⁸ Procedures were conducted under the approval of the institutional review boards at the Burnham Institute and the University of California San Diego (La Jolla, CA) with all patients signing informed consent.⁸ Lymphocytes were isolated by Ficoll density-gradient centrifugation, and immunofluorescence flow cytometry verified that they were composed of greater than 90% CD5⁺CD19⁺CD23⁺ B cells.

Cell viability and apoptosis assay

CLL B cells were cultured at 2×10^6 /mL in Iscove modified Dulbecco medium (IMDM) containing 20% fetal calf serum (FCS), 1 mM L-glutamine, and antibiotics. Cell counts were performed by means of a

From The Burnham Institute, and University of California San Diego, Dept Medicine, La Jolla, CA; Laboratory of Cellular Immunology, Ochsner Foundation, New Orleans, LA; and Isis Pharmaceuticals, Carlsbad, CA.

Submitted November 8, 2001; accepted April 9, 2002.

Supported by the National Cancer Institute, National Institutes of Health grant CA 98099.

Reprints: John C. Reed, The Burnham Institute, 10901 N Torrey Pines Rd, La Jolla, CA 92037; e-mail: jreed@burnham.org.

The publication costs of this article were defrayed in part by page charge payment. Therefore, and solely to indicate this fact, this article is hereby marked "advertisement" in accordance with 18 U.S.C. section 1734.

© 2002 by The American Society of Hematology

bench-top mini-fluorescence-activated cell sorter (mini-FACS) (GUAVA Technologies, Hayward, CA) according to the manufacturer's instructions, and viable cell numbers were quantified on the basis of 7-aminoactinomycin D (7-AAD) exclusion. After 24 hours of incubation, at least 5×10^5 cells were recovered by centrifugation for evaluation of apoptotic cells with the use of double staining with annexin V-fluorescein isothiocyanide (annexin V-FITC) and propidium iodide (PI) (BioVision, St Pete Beach, FL), followed by flow cytometric analysis with the use of the FL-1 and FL-3 channels of a flow cytometer (FACSsort; Becton Dickinson, San Jose, CA), where apoptotic cells are defined as annexin V⁺ and PI⁻.

Cell cultures

Cells used for coculture experiments included HK cells (a follicular, dendritic cell line obtained from normal human tonsil⁹), peripheral blood dendritic cells (catalog no. cc-270; Cambrex Bioscience, Baltimore, MD), 3T3-murine fibroblasts, 3T3-human CD40 ligand (3T3-hCD40L) cells (gift from Dr G. Freeman),¹⁰ and ovarian cancer cell line OVCAR3 (American Type Culture Collection, Manassas, VA). These cells were cultured in 24-well plates until confluent. CLL B cells (2×10^6 per milliliter) were then cocultured with these adherent cell lines in IMDM containing 20% FCS, 1 mM L-glutamine, and antibiotics. In some cases, 10 μ g/mL neutralizing anti-CD44,¹¹ anti-intercellular adhesion molecule-1 (anti-ICAM-1) (MAB2146Z) (Chemicon, Temecula, CA), anti- β 1-integrin (catalog no. 05-232; Upstate Biotechnology, Lake Placid, NY), anti-CD40 (MA624.31) (Calbiochem, San Diego, CA), or anti-interleukin-6 receptor (anti-IL-6R) (catalog no. AF-227-NA; R&D Systems, Minneapolis, MN) antibodies was added to cultures. CLL B cells were recovered from plates with gentle agitation, and the percentage of apoptotic cells was determined by double staining with annexin V-FITC/PI, followed by flow cytometric analysis (5×10^5 cells per assay). Alternatively, cell lysates were prepared for immunoblot analysis. FACS light-scatter data confirmed negligible contamination of B-CLLs with the adherent cell lines.

Cell separation experiments

The role of soluble factors in HK cell-mediated protection of CLL B cells was explored by means of microporous membranes to separate HK and CLL B cells. Transwell chambers with cell-culture insets of 0.4- μ m pore diameter (Falcon, Franklin Lakes, NJ) were supplied with HK cells in RPMI medium containing 10% FCS and penicillin/streptomycin in the lower chamber. CLL B-cell suspensions were prepared (2×10^6 cells per milliliter) in the same medium and were added to the upper chamber after HK cells reached confluence. As a control, CLL B cells were cocultured with HK cells without a porous barrier. After incubation at 37°C overnight, CLL B cells were harvested, and cell viability was determined by annexin V-FITC assay. Data were collected by flow cytometry.

Preparation of conditioned medium (CM)

To prepare conditioned medium (CM) from cultures of HK and OVCAR3 cells, cells were cultured in 100-mm dishes in 10 mL complete medium until reaching confluence. Then, medium was replaced with 5 mL fresh complete medium, and cultures were continued for 3 days. The supernatants were harvested and either used directly or heated at 56°C for 30 minutes, before filtration (0.2 μ m). Freshly isolated CLL B cells were cultured with 50% to 100% CM, with the balance of the medium consisting of RPMI 1640 containing 10% FCS and penicillin/streptomycin. After 24 hours, the percentage of CLL B cells was determined as described above.

Electroporation of oligonucleotides

Mcl-1 antisense or random-sequence oligonucleotides (1 to 5 μ M) were introduced into B-CLL cells by electroporation. A suspension of 10^6 CLL B cells (0.5 mL) was added to electroporation cuvettes (0.4 cm) in IMDM. Oligonucleotides were then added to the cell suspensions and incubated on ice for 10 minutes. The cells were electroporated (750 to 1250V/cm and 900 μ F) by means of an instrument from Biorad (Hercules, CA) and were again incubated on ice for 10 minutes. Cells were washed once in IMDM containing 20% FCS, 1 mM L-glutamine, and antibiotics, and were then

resuspended at 2×10^6 /mL in the same medium and cultured for 24 hours prior to additional experimental procedures. As a control for monitoring uptake, FITC-labeled oligonucleotides were added to a cuvette (1 μ M, final concentration), and following electroporation, the cells were analyzed by FACS. As an additional control, the labeled oligonucleotide was incubated with CLL B cells without electroporation to determine the background level of spontaneous uptake.

Flow cytometric analysis of surface antigens

Cells were collected and washed twice in phosphate-buffered saline (PBS). Cells were incubated with 50 μ g/mL nonspecific human immunoglobulin G (IgG; Cappel, Durham, NC) on ice for 10 minutes to block Fc receptors. Cells were then incubated with FITC- or PE-conjugated purified monoclonal antibodies on ice for 1 hour. After incubation, cells were washed once with PBS, and the relative levels of surface antigens were assessed by FACS analysis, by means of the FL-1 or FL-2 channels of a flow cytometer (FACSsort; Becton Dickinson).

Immunoblot analysis

Cell lysates were prepared with the use of RIPA buffer (10 mM Tris [tris(hydroxymethyl)aminomethane], pH 7.4; 150 mM NaCl; 1% Triton \times 100; 0.5% deoxycholate; 0.1% sodium dodecyl sulfate [SDS], 5 mM EDTA [ethylenediaminetetraacetic acid]) containing protease inhibitors (complete tablets; Roche, Basel, Switzerland). Aliquots of protein samples (12.5 μ g) were subjected to SDS-polyacrylamide gel electrophoresis (SDS-PAGE) (4%-20% gradient gels from ISC BioExpress, Kaysville, UT) and immunoblot assay.^{12,13} Primary antibodies included Mcl-1,¹⁴ Bcl-X_L,¹⁵ Bcl-2,¹⁴ Bax,¹⁶ Bak,¹⁷ X-linked inhibitor of apoptosis (XIAP),¹⁸ FLIP (FLICE [FADD-like IL-beta-converting enzyme]-inhibitory protein),¹⁹ and β -actin (Sigma Immunochemicals, St Louis, MO). Immunodetection was accomplished with the use of horseradish peroxidase (HRPase)-conjugated secondary antibodies and an enhanced chemiluminescence (ECL) method (Amersham, Buckinghamshire, United Kingdom) involving exposure to x-ray film (Kodak XAR) (Rochester, NY).

Results

Coculture with the follicular dendritic cell line (HK) protects CLL B cells against spontaneous apoptosis

Freshly isolated CLL B cells (2×10^6 /mL) were cultured alone or together with the follicular, dendritic cell line HK. A time-course study was performed to determine the percentage of CLL B cells undergoing spontaneous apoptosis when cultured with or without HK cells, as determined by annexin V/PI staining. As shown in Figure 1A, HK cells induced sustained protection of primary leukemia cells against spontaneous apoptosis. Total cell counts were also monitored during the course of these experiments, quantifying the number of viable and dead cells on the basis of flow cytometric analysis of 7-AAD exclusions. HK cells reduced the decline in viable cell numbers that occurs when CLL B cells are placed into cultures (Figure 1B). The total number of CLL B cells recovered from cultures (including both viable and dead cells) was only slightly lower for cocultured CLL B cells compared with CLL B cells cultured alone (day 4, mean $1.5 \pm 0.4 \times 10^6$ /mL versus $1.9 \pm 0.3 \times 10^6$ /mL; $n = 3$ in triplicate cultures), suggesting that reduced recovery of dead or dying cells does not adequately account for the increased percentages of nonapoptotic viable cells upon coculture with HK cells.

HK coculture significantly reduced spontaneous apoptosis in all B-CLL specimens tested ($n = 14$), (Figure 1C, and data not shown). The percentage of CLL B cells undergoing apoptosis in vitro in 24 hours was reduced by HK cell coculture from an average

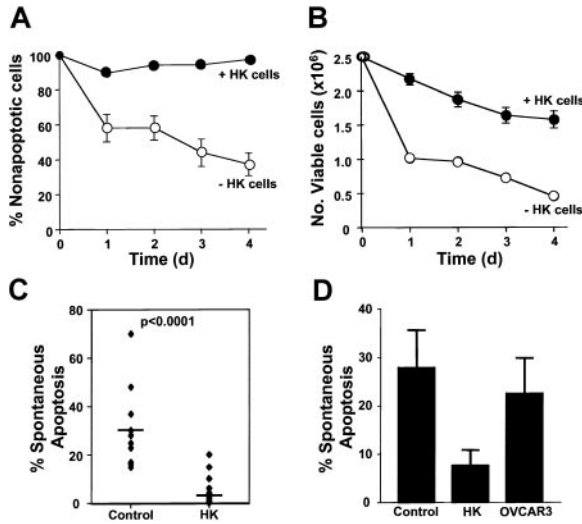


Figure 1. HK cells protect against spontaneous apoptosis of B-CLL cells. Freshly isolated B-CLL cells were cultured at 2×10^6 cells per milliliter alone; in coculture with a human, follicular, dendritic cell line (HK); or with an ovarian cell line (OVCAR3) at 1×10^5 cells per milliliter. The percentage of spontaneous apoptosis was measured by double staining with annexin V-FITC and PI, followed by flow cytometric analysis (mean \pm SD). (A) B-CLL cells were cultured alone or in coculture with HK cells for 24, 48, 72, or 96 hours before measuring apoptosis ($n = 9$). (B) Numbers of viable cells were monitored in cultures of CLL B cells on the basis of 7-AAD exclusion assay (mean \pm SD, $n = 3$). (C) Data are summarized for all 6 B-CLL specimens tested, with apoptosis measured at 24 hours. (D) CLL B cells were cocultured with either HK cells or OVCAR3 cells for 24 hours. Bars represent mean for each group ($n = 6$).

of 31% (range, 15%-70%) to 5% (range, 0%-20%) for the patient specimens analyzed ($n = 14$) ($P < .0001$). Furthermore, HK cell coculture protected CLL B cells from apoptosis induced by a variety of anticancer drugs (data not shown). The protective effect was specific, inasmuch as coculture with another adherent cell line (OVCAR3) did not induce significant protection (Figure 1D).

Protection by HK cells requires cell contact

Experiments analyzing the possible role for a soluble factor in the HK protective mechanism showed a dependence on cell-cell interactions, inasmuch as separation of HK and CLL and B cells by a microporous membrane abrogated protection (Figure 2A). These results were confirmed in experiments where CLL and B cells were cultured with conditioned medium harvested from cultures of HK cells. Soluble factors secreted from HK only slightly reduced apoptosis of cultured CLL B cells. Conditioned medium from OVCAR3 cells served as a control (Figure 2B).

Induction of antiapoptotic protein Mcl-1 by HK coculture

We examined the effect of HK coculture on the expression of several proteins known to regulate apoptosis, including antiapoptotic Bcl-2 family members. For these experiments, CLL B cells were cultured with either HK cells or, as a control, murine 3T3 fibroblasts or 3T3 cells expressing CD40L. The nonadherent leukemic cells were then recovered 24 hours later. A representative result is shown in Figure 3A. HK coculture induced an increase in Mcl-1 expression, whereas CD40L induced an increase in Bcl-X_L levels. Other apoptosis-regulatory proteins, including Bcl-2, Bax, Bak, and XIAP, were not affected by HK coculture (data not shown). Densitometric analysis of Mcl-1 protein levels in several B-CLL specimens analyzed confirmed that HK coculture reproducibly induces a significant increase in Mcl-1 expression, whereas

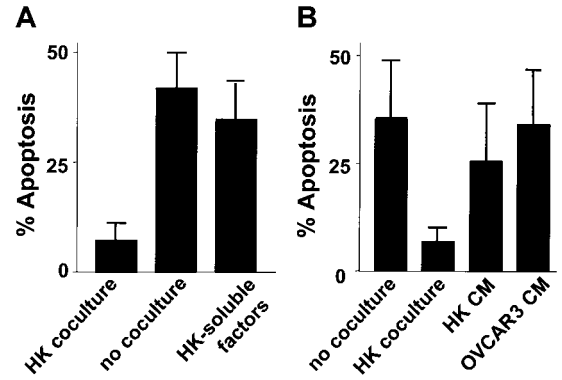


Figure 2. Effect of cell-cell contact on HK protection. (A) HK cells were plated in the lower chamber of transwell plates containing a porous membrane. CLL B cells (2×10^6 cells per milliliter) were plated in the upper chamber (no coculture). As a control, HK cells and CLL B cells were also cocultured together on the same side of filter ("coculture"). Simultaneously, B-CLL cells (2×10^6 cells per milliliter) were cultured with conditioned medium recovered from confluent HK cultures ("HK-soluble factors"). After 24 hours of culture, the CLL B cells were recovered, and the percentage of apoptosis was determined by annexin V-FITC/PI double staining, followed by flow cytometric analysis ($n = 4$). (B) Conditioned medium (cm) from cultures of HK or OVCAR3 cells was applied to cultures of CLL B cells at 50% (vol/vol), and the percentage of apoptotic cells was determined 1 day later as described above. As controls, CLL B cells were cultured in parallel without ("no coculture") or with ("HK coculture") HK cells before measurement of apoptosis percentages.

CD40 ligation does not (Figure 3B). The HK cell-mediated increase in Mcl-1 protein levels is not explained by contamination of CLL B cell samples with the follicular dendritic cells, inasmuch as pilot studies demonstrated that HK cells do not contain detectable Mcl-1 protein levels (data not shown). Levels of the antiapoptotic protein FLIP were also up-regulated by both HK coculture and CD40L (data not shown). Analysis of surface antigen expression on CLL B cells when cocultured with HK or 3T3-hCD40L cells provided further evidence that the HK cell survival pathway differs from CD40L, as expression of antigens known to be up-regulated by CD40L (CD54, CD80, and CD95) was not induced on CLL B cells cultured with HK cells (I.M.P., S.K., J.M.Z., J.C.R., unpublished observations, June 2002).

Freshly isolated dendritic cells also up-regulate Mcl-1 and protect CLL B cells

To explore whether apoptosis by HK cells applies to other types of dendritic cells, we tested the effects of coculturing CLL B cells with dendritic cells freshly prepared from peripheral blood by

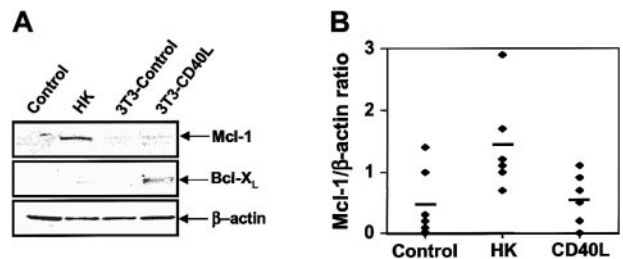


Figure 3. Effect of HK cells on levels of Mcl-1 in CLL B cells. (A) CLL B cells from representative patient specimens were cultured for 24 hours alone ("control"); with HK cells; with NIH3T3 control cells; or with NIH3T3-hCD40L cells. CLL B cells were recovered from cultures, and protein-containing lysates were prepared, normalized for total protein content (12.5 μ g per lane) and analyzed by SDS-PAGE/immunoblot assay with the use of antibodies specific for Mcl-1, Bcl-X_L or β -actin. (B) Mcl-1 and β -actin protein levels were assayed by SDS-PAGE and immunoblotted as above for 6 CLL B-cell samples. Data were quantified by scanning densitometry and expressed as a ratio ($n = 6$).

culture with granulocyte-macrophage colony-stimulating factor (GM-CSF) and IL-4. Similarly to HK cells, freshly prepared dendritic cells (DCs) protected CLL B cells from spontaneous apoptosis in vitro (Figure 4A). Coculture with normal DCs also induced Mcl-1 expression in CLL B cells (Figure 4B).

HK cell-induced protection against spontaneous apoptosis is dependent on Mcl-1

To explore the role of Mcl-1 in HK-mediated protection of CLL B cells, we introduced Mcl-1 antisense into CLL B cells by electroporation. With the use of FITC-conjugated oligonucleotides, electroporation conditions were optimized so that essentially all cells that survived electroporation (approximately 70%) took up oligonucleotides. Mcl-1 antisense oligonucleotides (1 μ M) markedly reduced the levels of Mcl-1 protein in CLL B cells, whereas control oligonucleotides did not (Figure 5). Mcl-1 antisense also partially abrogated the cytoprotective effect of HK cells (Figure 5). In contrast, cytoprotection induced by CD40L was not impaired by Mcl-1 antisense treatment (not shown). These results provide evidence that HK-induced protection against spontaneous apoptosis in CLL B cells is dependent at least in part on Mcl-1.

HK-induced protection is dependent on CD44 ligation

Because cell-cell contact was determined to be important for HK cell-mediated protection of CLL B cells, we examined whether specific adhesion molecules might be required for HK-induced protection. To this end, we introduced neutralizing antibodies against various surface antigens known to be expressed on HK or CLL B cells²⁰ into cocultures, ascertaining their effect on CLL B-cell apoptosis. Blocking antibodies recognizing CD44 inhibited HK-induced protection of CLL B cells, whereas neutralizing antibodies directed against CD40, ICAM-1, and β 1-integrin did not (Figure 6). As HK cells have been shown to secrete IL-6,²¹ which is known to induce Mcl-1 expression in B cells,²² we also analyzed whether IL-6 was involved in HK-induced protection. However, neutralizing anti-IL-6R antibodies had no effect on CLL B-cell apoptosis in HK cell cocultures (data not shown).

Finally, to explore the relation of CD44 to the induction of Mcl-1 expression by HK cells, we examined the effects of neutralizing anti-CD44 antibodies on Mcl-1 protein levels in CLL B cells. As shown in Figure 6, blocking CD44 resulted in decreased levels of Mcl-1 protein in CLL B cells, indicating that HK induces Mcl-1 via a CD44-dependent mechanism.

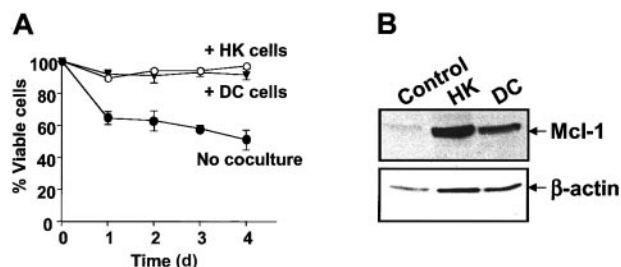


Figure 4. Effect of dendritic cells on CLL B-cell apoptosis and Mcl-1 expression. (A) CLL B cells were cultured alone or together with either HK or normal dendritic cells. Apoptosis was measured by annexin V-FITC/PI double staining by means of flow cytometric analysis at various times after initiation of culture ($n = 5$). (B) Protein lysates were prepared after 24 hours and analyzed by SDS-PAGE/immunoblot assay with the use of antibodies specific for Mcl-1 and β -actin.

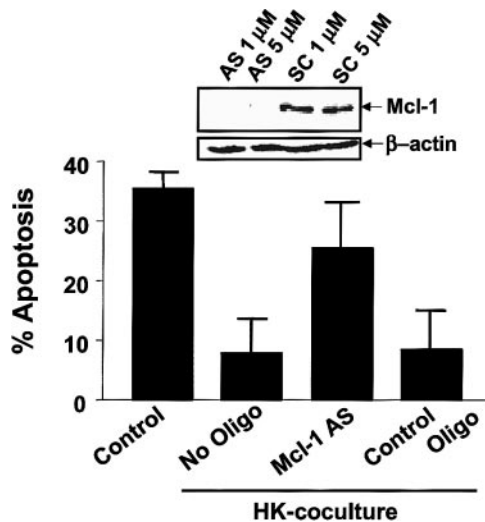


Figure 5. Effect of Mcl-1 antisense oligonucleotides on HK protection against spontaneous apoptosis. B-CLL cells from a representative patient specimen were cultured for 24 hours alone or together with HK, in the presence or absence of 1 to 5 μ M antisense (AS) or random (scrambled [SC]) control oligonucleotides. Oligonucleotides were introduced into CLL B cells by electroporation (750 to 1250 V/cm and 900 μ F) prior to coculture. The CLL B cells were recovered from cultures, and the percentage of apoptosis was determined by annexin V-FITC/PI double staining, with the use of flow cytometric analysis ($n = 4$). Simultaneously, protein-containing lysates were prepared, and 12.5 μ g per lane protein from each lysate was analyzed by SDS-PAGE/immunoblot assay with the use of antibodies specific for Mcl-1 or β -actin. (One representative experiment of a total of 4 is presented.)

Discussion

CLL B cells display characteristics consistent with a defect in programmed cell death and exhibit prolonged survival in vivo. When recovered from peripheral blood or lymphoid tissues, more

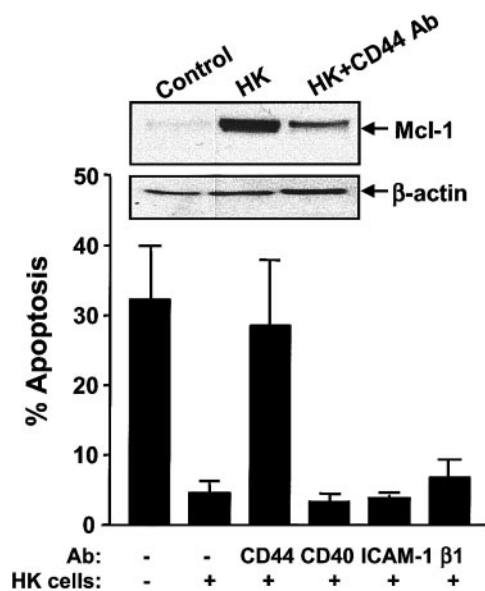


Figure 6. CD44 is required for HK-induced protection of CLL B cells. CLL B cells were cultured for 24 hours alone or together with HK cells in the presence or absence of 10 μ g/mL CD44, CD40, ICAM-1, or β 1-integrin neutralizing antibodies. CLL B cells were recovered from cultures, and the percentage of apoptotic cells was determined by annexin V-FITC/PI double staining by means of flow cytometric analysis ($n = 7$). Simultaneously, protein-containing lysates were prepared, and 12.5 μ g per lane protein from each lysate was analyzed by SDS-PAGE/immunoblot assay with the use of antibodies specific for Mcl-1 or β -actin. (One representative experiment of a total of 3 is presented.)

than 95% of these cells are typically in G_0/G_1 and exhibit surface markers of quiescent inactivated B cells (reviewed in Dighiero et al,⁴ Montserrat et al,²³ O'Brien et al,²⁴ and Caligaris-Cappio²⁵). In contrast, B-CLL cells in vitro die spontaneously and can be difficult to keep alive in culture. Recent studies suggest that leukemic cell survival can be influenced by interactions with nonleukemic cells in the microenvironment of lymph nodes, marrow, and other tissues.^{26,27} This observation suggests that microenvironments exist in vivo that create survival niches for B-CLL cells.

In an effort to establish a convenient model that might mimic some aspects of the in vivo microenvironment relevant to B-CLL survival, we cocultured freshly isolated CLL B cells with the follicular dendritic cell line HK.¹¹ We observed that leukemic B cells are able to survive in vitro for prolonged periods when cultured with HK cells. The adhesion of CLL B cells to HK cells appears to be critical for enhanced B-CLL survival, because B-CLL cells die when separated from HK cells by a microporous membrane. Moreover the cytoprotective effect of HK cells was not supplanted by HK cell-conditioned medium, suggesting that soluble factors are inadequate to recapitulate the survival benefits afforded by this dendritic cell line.

Evidence has been presented that survival signals can be provided by interactions between adhesion proteins expressed on B-CLL cells and their ligands in the microenvironment.²⁸ Lagneaux and coworkers²⁶ have found that survival of B-CLL cells can be induced by bone marrow (BM) stromal cells, through an integrin-dependent mechanism. Burger et al^{29,30} have described interactions between specialized synovial "nurselike" cells, which protect B-CLL cells through a stromal cell-derived factor-1 (SDF-1) and CD106 (vascular cell adhesion molecule-1 [VCAM-1])–dependent mechanism. Contact with BM stromal cells has also been reported to induce proliferation and sustain survival of acute lymphoblastic leukemia (ALL) cells in culture.^{31,32} CLL B-cell survival in vitro can also be promoted through direct contact with immobilized substrata produced from fibronectin, correlating with an increase in the ratio of Bcl-2 to Bax.³³ In addition, it has recently been shown that IL-6 produced by endothelial cells inhibits apoptosis of B-CLL cells.³⁴ Thus, multiple environmental signals may modulate the survival and clonal expansion of neoplastic B cells in vivo.

Follicular dendritic cells have similarly been implicated in providing signals that stimulate B-cell lymphoma proliferation and survival.^{9,35} Circumstantial evidence has also suggested that follicular dendritic cells may also modify the natural history of the disease CLL.⁷ The follicular dendritic cell-like cell line HK has previously been shown to induce survival of lymphoma cells.³⁵ Here, we extend the observations on HK cells, showing they also provide survival signals to freshly isolated CLL B cells.

To explore the mechanism underlying the enhanced survival afforded by coculture with HK cells, we introduced neutralizing antibodies against various adhesion molecules expressed on HK or CLL cells. These experiments provided evidence of CD44 involvement in the HK-induced protection, whereas a role for CD40, ICAM-1, and VCAM-1 was not observed (Figure 6). It remains to be determined whether CD44 is required on HK cells, CLL B cells, or both for promoting survival of CLL cells. Nevertheless, we determined that blocking CD44 ligation decreased Mcl-1 protein levels in CLL B cells cocultured with HK cells, suggesting that HK-mediated up-regulation of Mcl-1 is dependent on CD44. As HK cells have been reported to secrete IL-6,²¹ which has been shown to promote B-cell survival through Mcl-1 up-regulation,^{21,22} we also tested whether IL-6 is involved in HK-mediated protection.

However, neutralizing antibodies against IL-6R did not abrogate the HK effect on apoptosis of CLL B cells, indicating that IL-6 is not critical to the HK cell mechanism of cytoprotection.

We examined the effects of HK cells on expression of several apoptosis-regulating proteins in B-CLLs, making comparisons with the well-studied protective mechanism of CD40 ligation. HK dendritic cells increased levels of the antiapoptotic protein Mcl-1 in CLL B cells, whereas CD40L stimulation increased expression of another antiapoptotic Bcl-2 family protein, Bcl-X_L (Figure 3A). Differences in the mechanism of cytoprotection afforded by HK dendritic cells versus CD40 ligation were also evident through studies of surface antigen expression, showing that CD40L induces increases in expression of CD54, CD80, and CD95 on CLL B cells whereas HK cells do not (data not shown). In this regard, the signaling pathways leading to *MCL-1* versus *BCL-X* gene expression are thought to be distinctly different. It is known that a prominent consequence of CD40 activation is induction of nuclear factor- κ (NF- κ B)/Rel transcription factors.³⁶⁻³⁸ The *BCL-X* gene promoter is directly induced by NF- κ B, as well as by the signal transducer and activator of transcription (Stat), Ets, and activator protein-1 (AP-1) transcription factor families.^{36,39,40} In contrast, STAT binding protein (SIE) and CRE-2 (cAMP [cyclic adenosine monophosphate] response element) *cis*-acting elements are located in the *MCL-1* gene promoter. It is thought that the CRE-2 element is activated via the phosphatidylinositol 3'-kinase (PI3K)/AKT pathway.⁴¹ In this regard, GM-CSF and IL-3 have been found to activate the PI3K/AKT pathways, leading to increases in *MCL-1* mRNA and Mcl-1 protein in multiple myeloma cells.^{42,43} Also, a role for Janus kinase (Jak)/Stat pathways in *MCL-1* gene regulation has been suggested by studies of multiple myeloma cells stimulated with IL-6.⁴² Differences in the specific Stat family members employed or combinatorial interactions of promoter-bound Stat's with other transcription factors may explain the observed differences in the control of *MCL-1* and *BCL-X* gene expression. Other explanations are also possible, including regulation at posttranscriptional steps affecting gene expression. Furthermore, regulation of Bcl-X_L and Mcl-1 protein expression levels could also be achieved by increasing the half-life of the proteins. In this regard, Mcl-1 has been shown to have a very short half-life.^{44,45}

Similarly to the HK cell line, freshly isolated dendritic cells also up-regulated Mcl-1 in CLL B cells (Figure 4B). This finding suggests that induction of Mcl-1 expression in CLL B cells may be a common survival mechanism invoked by interactions of CLL B cells with dendritic cells. It should be noted, however, that multiple types of dendritic cells may exist in vivo, and thus our findings do not necessarily apply to all dendritic cell populations.

Experiments with antisense oligonucleotides provided evidence that Mcl-1 is functionally important for HK cell-mediated protection of CLL B cells from apoptosis in vitro. This observation is interesting in light of the high levels of Bcl-2 protein that exists in most CLL B cells (reviewed in Reed and Kitada⁴⁶), implying that Bcl-2 alone is inadequate for maintaining survival of CLL B cells.

Although redundancy clearly exists in the functions of many members of the Bcl-2 family, these proteins can also play unique, nonredundant roles in physiology. For example, the phenotypes of *bcl-2*^{-/-}, *mcl-1*^{-/-}, and *bcl-x*^{-/-} gene knockout mice are strikingly different, implying specific nonredundant roles for each of these *bcl-2* family gene members in vivo.⁴⁷⁻⁴⁹ At the biochemical level, insights into the biological functions of the Bcl-2, Mcl-1, and Bcl-X_L proteins have come from analysis of the proteins with which they interact. For example, while Bcl-2, Bcl-X_L, and Mcl-1 have in common the ability to heterodimerize with Bax and

neutralize its cell death-inducing activity, only Mcl-1 binds to the proapoptotic protein Bok.^{50,51} The intracellular locations of the Bcl-2, Bcl-X_L, and Mcl-1 proteins are also partly different within cells, providing further suggestions of nonredundant roles. In this regard, the Mcl-1 protein appears to localize predominantly to endoplasmic reticulum and nuclear envelope, with relatively little association with mitochondrial membranes.⁴⁵ In contrast, a substantial proportion of Bcl-2 and Bcl-X_L is associated with mitochondria inside cells.^{52,53} Further evidence suggesting unique and complementary functions for antiapoptotic Bcl-2 family member proteins in B cells has come from correlative studies showing that the combination of up-regulated Bcl-X_L and Mcl-1 is associated with superior cell survival, compared with the up-regulation of the either of these antiapoptotic proteins alone in resting B-lymphocytes.⁵⁴ Similarly, it has been reported that memory B cells achieve extended survival through expression of high levels of both Bcl-2 and Bcl-X_L.⁵⁵

Given that most B-CLL cells contain high levels of Bcl-2, it is tempting to speculate that the combination of Mcl-1 and Bcl-2 might provide superior protection against spontaneous apoptosis or against apoptosis induced in vivo by iatrogenic or physiological cell death stimuli, such as chemotherapeutic drugs, cytolytic T-cells, and glucocorticoids. Alternatively, the in vivo dynamics of *MCL-1* and *BCL-2* gene regulation in B-CLL cells may create

situations in which either Bcl-2 or Mcl-1 but not both of these antiapoptotic proteins are present, thus affording B-CLL cells that have the capacity to express both genes a greater advantage, when confronted with apoptotic stimuli in vivo. In this regard, it may be relevant that higher levels of Mcl-1 protein have been associated with failure to obtain complete remission in B-CLL patients treated with chemotherapy.¹³ Also, the anti-CD20 antibody rituximab has been reported to down-regulate Mcl-1 (but not Bcl-2) protein levels in B-CLL patients in vivo, sometimes correlating with activation of caspases in the circulating leukemic cells of these patients.⁵⁶ When these results are taken into consideration, it seems that Mcl-1 may play a prominent role in the in vivo survival of B-CLLs, thus raising the possibility of targeting therapeutic intervention toward this antiapoptotic member of the Bcl-2 family. Thus, while *BCL-2* antisense oligonucleotide therapy for B-CLL is currently being explored in clinical trials, the collective findings also suggest opportunities for use of *MCL-1* antisense therapy in this disease.

Acknowledgment

We thank April C. Sawyer and R. Cornell for manuscript preparation.

References

- Caligaris-Cappio F, Hamblin TJ. B-cell chronic lymphocytic leukemia: a bird of a different feather. *J Clin Oncol*. 1999;17:399-408.
- Wingo PA, Tong T, Bolden S. Cancer Statistics, 1995. *CA Cancer J Clin*. 1995;45:8-30.
- Dameshek W. Chronic lymphocytic leukemia: an accumulative disease of immunologically incompetent lymphocytes. *Blood*. 1967;29:566-584.
- Dighiero G, Travade P, Chevret S, Fenaux P, Chastang C, Binet J-L. B-cell chronic lymphocytic leukemia: present status and future directions. *Blood*. 1991;78:1901-1914.
- Collins RJ, Verschuer LA, Harmon BV, Prentice RL, Pope JH, Kerr JF. Spontaneous programmed death (apoptosis) of B-chronic lymphocytic leukaemia cells following their culture in vitro. *Br J Haematol*. 1989;71:343-350.
- McConkey DJ, Aguilar-Santelises M, Hartzell P, et al. Induction of DNA fragmentation in chronic B-lymphocytic leukemia cells. *J Immunol*. 1991;146:1072-1076.
- Chilosi M, Pizzolo G, Caligaris-Cappio F, et al. Immunohistochemical demonstration of follicular dendritic cells in bone marrow involvement of B-cell chronic lymphocytic leukemia. *Cancer*. 1985;56:328-332.
- Cheson BD, Bennett JM, Grever M, et al. National Cancer Institute-sponsored Working Group guidelines for chronic lymphocytic leukemia: revised guidelines for diagnosis and treatment. *Blood*. 1996;87:4990-4997.
- Choe J, Li L, Zhang X, Gregory CD, Choi YS. Distinct role of follicular dendritic cells and T cells in the proliferation, differentiation, and apoptosis of a centroblast cell line, L3055. *J Immunol*. 2000;164:56-63.
- Schattner EJ, Elkon KB, Yoo D, et al. CD40 ligation induces Apo-1/Fas expression on human B lymphocytes and facilitates apoptosis through the Apo-1/Fas pathway. *J Exp Med*. 1995;182:1557-1565.
- Kim HS, Zhang X, Klyushnenkova E, Choi YS. Stimulation of germinal center B lymphocyte proliferation by an FDC-like cell line, HK. *J Immunol*. 1995;155:1101-1109.
- Krajewski S, Zapata JM, Reed JC. Detection of multiple antigens on Western blots. *Anal Biochem*. 1996;236:221-228.
- Kitada S, Andersen J, Akar S, et al. Expression of apoptosis-regulating proteins in chronic lymphocytic leukemia: correlations with in vitro and in vivo chemoresponses. *Blood*. 1998;91:3379-3389.
- Krajewski S, Bodrug S, Gascoyne R, Berean K, Krajewska M, Reed JC. Immunohistochemical analysis of Mcl-1 and Bcl-2 proteins in normal and neoplastic lymph nodes. *Am J Pathol*. 1994;145:515-525.
- Krajewski S, Krajewska M, Shabaik A, et al. Immunohistochemical analysis of in vivo patterns of Bcl-X expression. *Cancer Res*. 1994;54:5501-5507.
- Krajewski S, Blomqvist C, Franssila K, et al. Reduced expression of pro-apoptotic gene Bax is associated with poor response rates to combination chemotherapy and shorter survival in women with metastatic breast adenocarcinoma. *Cancer Res*. 1995;55:4471-4478.
- Krajewski S, Krajewska M, Reed JC. Immunohistochemical analysis of in vivo patterns of Bak expression, a pro-apoptotic member of the Bcl-2 protein family. *Cancer Res*. 1996;56:2849-2855.
- Tamm I, Kornblau SM, Segall H, et al. Expression and prognostic significance of IAP-family genes in human cancers and myeloid leukemias. *Clin Cancer Res*. 2000;6:1796-1803.
- Scaffidi C, Medema JP, Kramer PH, Peter ME. FLICE is predominantly expressed as two functionally active isoforms, caspase-8/a and caspase-8/b. *J Biol Chem*. 1997;272:26953-26958.
- Kim HS, Zhang X, Choi YS. Activation and proliferation of follicular dendritic cell-like cells by activated T lymphocytes. *J Immunol*. 1994;153:2951-2961.
- Kagami Y, Jung J, Choi YS, et al. Establishment of a follicular lymphoma cell line (FLK-1) dependent on follicular dendritic cell-like cell line HK. *Leukemia*. 2001;15:148-156.
- Altmeyer A, Simmons RC, Krajewski S, Reed JC, Bornkamm GW, Kiang SC. Reversal of EBV immortalization precedes apoptosis in IL-6-induced human B cell terminal differentiation. *Immunity*. 1997;7:667-677.
- Montserrat E, Binet JL, Dighiero G, et al. Chronic lymphoproliferative disorders. *Rev Invest Clin*. 1994(suppl):52-58.
- O'Brien S, del Giglio A, Keating M. Advances in the biology and treatment of B-cell chronic lymphocytic leukemia. *Blood*. 1995;85:307-318.
- Caligaris-Cappio F. B-chronic lymphocytic leukemia: a malignancy of anti-self B cells. *Blood*. 1996;87:2615-2620.
- Lagneaux L, Delforge A, Bron D, De Bruyn C, Strychkmans P. Chronic lymphocytic leukemic B cells but not normal cells are rescued from apoptosis by contact with normal bone marrow stromal cells. *Blood*. 1998;91:2387-2396.
- Panayiotidis P, Jones D, Ganeshaguru K, Foroni L, Hoffbrand AV. Human bone marrow stromal cells prevent apoptosis and support the survival of chronic lymphocytic leukaemia cells in vitro. *Br J Haematol*. 1996;92:97-103.
- Caligaris-Cappio F. Biology of chronic lymphocytic leukemia. *Rev Clin Exp Hematol*. 2000;4:5-21.
- Burger JA, Tsukada N, Burger M, Zvaifler NJ, Dell'Aquila M, Kipps TJ. Blood-derived nurse-like cells protect chronic lymphocytic leukemia B cells from spontaneous apoptosis through stromal cell-derived factor-1. *Blood*. 2000;96:2655-2663.
- Burger JA, Zvaifler NJ, Tsukada N, Firestein GS, Kipps TJ. Fibroblast-like synoviocytes support B-cell pseudoemperipolesis via a stromal cell-derived factor-1 and CD106 (VCAM-1)-dependent mechanism. *J Clin Invest*. 2001;107:305-315.
- Bradstock K, Bianchi A, Makrynika V, Filshie R, Gottlieb D. Long-term survival and proliferation of precursor-B acute lymphoblastic leukemia cells on human bone marrow stroma. *Leukemia*. 1996;10:813-820.
- Manabe A, Murti KG, Coustan-Smith E, et al. Adhesion-dependent survival of normal and leukemic human B lymphoblasts on bone marrow stromal cells. *Blood*. 1994;83:758-766.
- Ricciardi MR, Petrucci MT, Gregori C, et al. Reduced susceptibility to apoptosis correlates with

- kinetic quiescence in disease progression of chronic lymphocytic leukaemia. *Br J Haematol*. 2001;113:391-399.
34. Moreno A, Villar ML, Cámara C, et al. Interleukin-6 dimers produced by endothelial cells inhibit apoptosis of B-chronic lymphocytic leukemia cells. *Blood*. 2001;97:242-249.
 35. Petrasch S, Brittinger G, Wacker HH, Schmitz J, Kosco-Vilbois M. Follicular dendritic cells in non-Hodgkin's lymphomas. *Leuk Lymphoma*. 1994;15:33-43.
 36. Lee HH, Dadgostar H, Cheng Q, Shu J, Cheng G. NF- κ B-mediated up-regulation of bcl-x and bfl-1/a1 is required for CD40 survival signaling in B lymphocytes. *Proc Natl Acad Sci U S A*. 1999;96:9136-9141.
 37. Wang Z, Karras J, Howard R, Rothstein T. Induction of Bcl-X by CD40 engagement rescues slg-induced apoptosis in murine B cells. *J Immunol*. 1995;155:3722-3725.
 38. Yeh WC, Shahinian A, Speiser D, et al. Early lethality, functional NF-KB activation, and increased sensitivity to TNF-induced cell death in TRAF2-deficient mice. *Immunity*. 1997;7:715-725.
 39. Grad JM, Zeng XR, Boise LH. Regulation of Bcl-xL: a little bit of this and a little bit of STAT. *Curr Opin Oncol*. 2000;12:543-549.
 40. Sevilla L, Zaldumbide A, Pognonec P, Boulukos KE. Transcriptional regulation of the bcl-x gene encoding the anti-apoptotic Bcl-xL protein by Ets, Rel/NFkappaB, STAT and AP1 transcription factor families. *Histol Histopathol*. 2001;16:595-601.
 41. Wang J-M, Chao J-R, Chen W, Kuo M-L, Yen JJ-Y, Yang-Yen H-F. The antiapoptotic gene mcl-1 is up-regulated by the phosphatidylinositol 3-kinase/Akt signaling pathway through a transcription factor complex containing CREB. *Mol Cell Biol*. 1999;19:6195-6206.
 42. Puthier D, Bataille R, Amiot M. IL-6 up-regulates mcl-1 in human myeloma cells through JAK/STAT rather than ras/MAP kinase pathway. *Eur J Immunol*. 1999;29:3945-3950.
 43. Epling-Brunette PK, Zhong B, Bai F, et al. Cooperative regulation of Mcl-1 by Janus kinase/stat and phosphatidylinositol 3-kinase contribute to granulocyte-macrophage colony-stimulating factor-delayed apoptosis in human neutrophils. *J Immunol*. 2001;166:7486-7495.
 44. Kozopas KM, Yang T, Buchan HL, Zhou P, Craig R. Mcl-1, a gene expressed in programmed myeloid cell differentiation, has sequence similarity to Bcl-2. *Proc Natl Acad Sci U S A*. 1993;90:3516-3520.
 45. Yang T, Kozopas KM, Craig RW. The intracellular distribution and pattern of expression of Mcl-1 overlap with, but are not identical to, those of Bcl-2. *J Cell Biol*. 1995;128:1173-1184.
 46. Reed JC, Kitada S. Apoptosis regulation and Bcl-2 family gene expression in chronic lymphocytic leukemia. *Semin Oncol*. 2002;29:10-24.
 47. Rinkenberger J, Horning S, Klocke B, Roth K, Korsmeyer S. Mcl-1 deficiency results in peri-implantation embryonic lethality. *Genes Dev*. 2000;14:23-27.
 48. Motoyama N, Wang F, Roth KA, et al. Massive cell death of immature hematopoietic cells and neurons in Bcl-X-deficient mice. *Science*. 1995;267:1506-1510.
 49. Veis DJ, Sorenson CM, Shutter JR, Korsmeyer SJ. Bcl-2-deficient mice demonstrate fulminant lymphoid apoptosis, polycystic kidneys, and hypopigmented hair. *Cell*. 1993;75:229-240.
 50. Bodrug SE, Aimé-Sempé C, Sato T, Krajewski S, Hanada M, Reed JC. Biochemical and functional comparisons of Mcl-1 and Bcl-2 proteins: evidence for a novel mechanism of regulating Bcl-2 family protein function. *Cell Death Differ*. 1995;2:173-182.
 51. Hsu Y-T, Wolter KG, Youle RJ. Cytosol-to-membrane redistribution of members of Bax and Bcl-X_L during apoptosis. *Proc Natl Acad Sci U S A*. 1997;94:3668-3672.
 52. Krajewski S, Tanaka S, Takayama S, Schibler MJ, Fenton W, Reed JC. Investigation of the subcellular distribution of the bcl-2 oncoprotein: residence in the nuclear envelope, endoplasmic reticulum, and outer mitochondrial membranes. *Cancer Res*. 1993;53:4701-4714.
 53. Zamzami N, Marzo I, Susin S, et al. The thiol crosslinking agent diamide overcomes the apoptosis-inhibitory effect of Bcl-2 by enforcing mitochondrial permeability transition. *Oncogene*. 1998;16:1055-1063.
 54. Lomo J, Blomhoff H, Jacobsen S, Krajewski S, Reed J, Smeland E. Interleukin-13 in combination with CD40 ligand potentially inhibits apoptosis in human B lymphocytes: upregulation of Bcl-xL and Mcl-1. *Blood*. 1997;89:4415-4424.
 55. Bovia F, Nabili-Tehrani AC, Werner-Favre C, Barnett M, Kindler V, Zubler RH. Quiescent memory B cells in human peripheral blood co-express bcl-2 and bcl-x(L) anti-apoptotic proteins at high levels. *Eur J Immunol*. 1998;28:4418-4423.
 56. Byrd JC, Kitada S, Flinn I, et al. The mechanism of tumor cell clearance by rituximab in vivo in patients with B-cell chronic lymphocytic leukemia: evidence of caspase activation and apoptosis induction. *Blood*. 2002;99:1038-1043.