



## Long-term risk of second malignancy and cardiovascular disease after Hodgkin lymphoma treatment

Flora E. van Leeuwen<sup>1</sup> and Andrea K. Ng<sup>2</sup>

<sup>1</sup>Division of Psychosocial Research and Epidemiology, Department of Epidemiology, Netherlands Cancer Institute, Amsterdam, The Netherlands; and <sup>2</sup>Department of Radiation Oncology, Brigham and Women's Hospital and Dana-Farber Cancer Institute, Harvard Medical School, Boston, MA

Long-term survivors of Hodgkin lymphoma (HL) experience several late adverse effects of treatment, with second malignant neoplasms (SMNs) and cardiovascular diseases (CVDs) being the leading causes of death in these patients. Other late effects have also been identified, such as pulmonary dysfunction, endocrinopathies (thyroid dysfunction, infertility), neck muscle atrophy, and persistent fatigue. HL survivors have two- to fourfold increased risks to develop SMNs and CVD compared with the general population. With respect to SMNs, radiotherapy is associated with 1.5- to 15-fold increased risk of solid malignancies. The relative risk (RR) of solid tumors increases steadily with increasing follow-up time from 5 to 15 years since radiotherapy, and remains elevated for at least 40 years. The RR of solid SMNs increases strongly with younger age at first treatment. Risks of lung, breast, and gastrointestinal (GI) cancers increase with higher radiation dose. Alkylating agent chemotherapy, especially procarbazine, does not only increase risk of leukemia but also of solid malignancies, in particular, cancers of the lung and GI tract. In contrast, gonadotoxic chemotherapy decreases the risk of radiation-associated breast cancer, through induction of premature menopause. Smoking appears to multiply the radiation- and chemotherapy-associated risks of lung cancer. Both radiotherapy and chemotherapy for HL may cause cardiovascular toxicity. Radiotherapy increases the risk of coronary heart disease, valvular heart disease, congestive heart failure (HF), and pericarditis, whereas anthracycline-containing chemotherapy increases the risks of HF and valvular heart disease. Cardiovascular toxicity following radiotherapy is usually observed from 5 to at least 35 years after therapy, whereas anthracycline-related toxicity is already observed during treatment, up to at least 25 years. The joint effects of anthracyclines, radiotherapy, and conventional cardiovascular risk factors (eg, hypertension, smoking, and physical inactivity) appear to be additive rather than multiplicative. HL survivors need lifelong risk-based screening for selected SMNs and CVDs. Furthermore, preventive strategies should include lifestyle and drug-based interventions to minimize exposure to conventional risk factors for cancer and CVD.

### Learning Objectives

- Know treatment-related risk factors for the development of second malignancy and CVDs after HL
- Be aware of the content of use surveillance guidelines for HL survivors, aimed at reduction of morbidity and mortality from second malignancy and CVDs

### Introduction

Since the introduction of modern radiotherapy and combination chemotherapy in the 1960s, Hodgkin lymphoma (HL) has become a highly curable malignancy with 5-year survival rates of more than 80%.<sup>1</sup> However, the life expectancy and quality of life of HL survivors are reduced by the occurrence of late adverse treatment effects.<sup>2-5</sup> The vast majority of HL survivors experience one or more physical and/or psychosocial problems.<sup>6-8</sup> Common late effects include second and subsequent malignant neoplasms (SMNs), several cardiovascular diseases (CVDs), thyroid dysfunction, subfertility, premature menopause,

and fatigue.<sup>7-17</sup> In addition to this wide range of physical late effects, many HL survivors face psychosocial problems that may or may not be linked to specific treatments, but significantly reduce their quality of life. These include impaired memory and concentration, depression and anxiety, sexual problems, and problems with employment and insurances.<sup>8,18,19</sup>

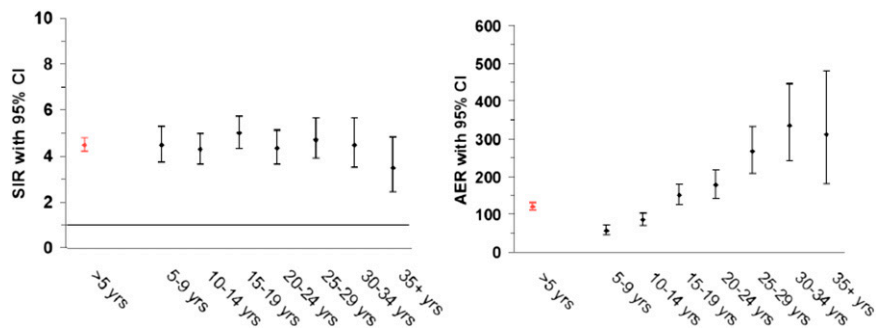
This review will focus on the risk of second malignancy and CVD after HL treatment, because these late effects contribute most to the substantial excess mortality after HL treatment.<sup>1,2,5,20,21</sup> Although HL is the major cause of excess death in the first 10 to 15 years after diagnosis, excess mortality after this period is mainly due to second malignancies and CVD.<sup>2,5</sup>

### Risk of second malignancy

Increased risks of solid tumors in irradiated HL patients and of leukemia in chemotherapy-treated patients have been reported consistently in the literature.<sup>14,21,22</sup> In a recent study that included HL patients treated from 1965 to 2000,<sup>9</sup> the excess risk of second malignancy remained significantly increased beyond 35 years after

Conflict-of-interest disclosure: The authors declare no competing financial interests.

Off-label drug use: None disclosed.



**Figure 1.** Risk (SIR and AER) of new malignancies after HL according to follow-up interval. CI, confidence interval; yrs, years.

HL treatment (Figure 1),<sup>9</sup> with a 40-year cumulative incidence of second cancer estimated at 43.6% (Figure 2).<sup>9</sup> The largest standardized incidence ratios (SIRs) are observed for leukemia (SIR = 10-30), followed by connective tissue, pleura and thyroid cancer, and non-HL (SIR = 6-20).<sup>9,12,21,23</sup> Moderately increased risks (SIR = 2-7) are observed for a large number of solid tumors, such as cancers of the lung, breast, stomach, esophagus, colon/rectum, cervix, mouth and pharynx, and melanoma.<sup>9,12,23-25</sup> Absolute excess risk (AER) is the best risk measure to express burden of disease. HL patients experience an excess of about 85 to 125 malignancies per 10000 patients per year, over and above the background rate. Solid tumors account for the large majority of excess cancers (60 to 100 per 10000 patients per year), and of those, breast and lung cancer account for the largest proportion of excess malignancies.<sup>9,12,21,23-27</sup>

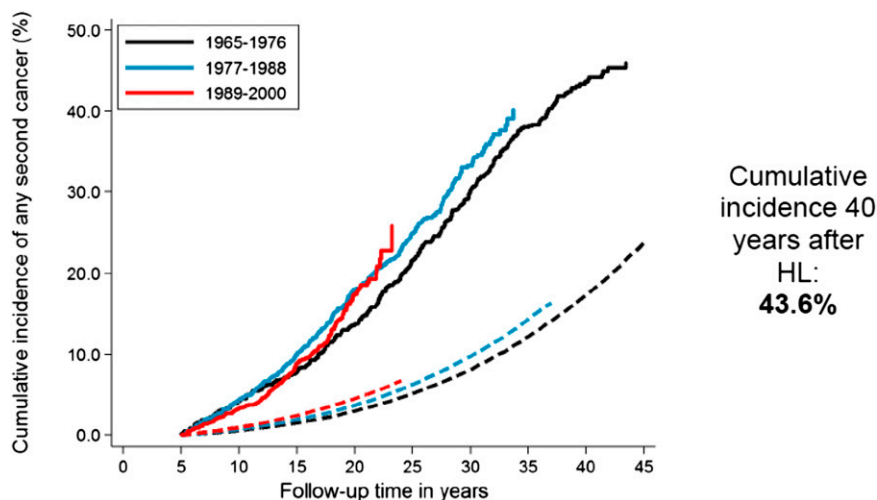
The SIR of solid tumors is minimally elevated in the 1- to 4-year follow-up period, but becomes significantly increased from 5 to >30 years since first treatment.<sup>9,14,24-26</sup> For several tumor sites (breast, thyroid, and esophagus), the excess risk does not become apparent until after 10 to 15 years of observation. Hodgson et al<sup>12</sup> modeled relative risks (RRs) and found no indication for increasing or decreasing RRs beyond 10 years of follow up. Due to the rising background incidence of cancer with age, long-term survivors experience strongly increasing AERs of solid malignancy. In a recent report with very long-term follow up, HL survivors in their 60s or 70s experienced 1.7 and 3.1 excess cancers per 100 patients per year, on

top of a background cancer incidence of 1.3 and 2.1 per 100 patients per year, respectively.<sup>9</sup>

The literature uniformly shows that the SIRs of various solid tumors increase strongly with younger age at first treatment.<sup>9,12,23,28</sup> The effect is strongest for breast cancer.<sup>24,25</sup> Both for breast and non-breast solid malignancies, AERs strongly increase with older attained age, indicating the increasing burden of excess cancers with advancing age of HL survivors.<sup>9,12,24</sup> Thirty years after treatment, at attained ages of  $\leq 51$  years, the cumulative incidence of breast cancer in survivors treated before age 21 was as high as 26%,<sup>25,28</sup> which is comparable to the risk of breast cancer gene mutation carriers.<sup>26,29</sup>

For lung cancer, SIRs do not decrease with increasing age at HL treatment as strongly as for breast and gastrointestinal tract cancers; the SIR was still 5.2-fold increased for patients treated at ages 35 to 51 years.<sup>24</sup> Also, increased SIRs for lung cancer appears to become manifest earlier (5 to 9 years from first treatment) than for breast and gastrointestinal tract cancers.<sup>9,24</sup>

Although alkylating chemotherapy is the main cause of acute myeloid leukemia after HL,<sup>30</sup> elevated risks of solid cancers following HL have been largely attributed to radiation therapy (RT).<sup>9,12,21,23,27</sup> For a number of solid malignancies (lung, breast, stomach, and pancreas), the risk has been shown to increase strongly and linearly



**Figure 2.** Cumulative incidence of solid malignancy after HL according to calendar period of treatment. Solid lines represent the observed incidence; and dashed lines the expected incidence in the general population.

**Table 1. Risk of lung cancer in patients with HL according to type of treatment and smoking category**

Treatment of Hodgkin disease		RR (95% CI) by smoking category (# of case patients; control patient)*	
Radiation $\geq$ 5 Gy	Alkylating agents	Non-smoker, light, other†	Moderate-heavy‡
No	No	1.0§	6.0 (1.9-20.4)
Yes	No	7.2 (2.9-21.2)	20.2 (6.8-68)
No	Yes	4.3 (1.8-11.7)	16.8 (6.2-53)
Yes	Yes	7.2 (2.8-21.6)	49.1 (15.1-187)

Adapted from Travis et al.<sup>31</sup>

\*Represents estimated tobacco smoking habit 5 years before diagnosis date of lung cancer and corresponding date in control patients, with the use of information recorded up to 1 year before these dates.

†This group includes nonsmokers, light current cigarette smokers (<1 pack per day), former cigarette smokers, smokers of cigar and pipes only, and patients from whom tobacco smoking habit was not stated.

‡Moderate (1 to 2 packs per day) and heavy (>2 packs per day) current cigarette smokers.

§Reference group.

with higher radiotherapy doses.<sup>31-35</sup> For example, compared with a dose of <4 Gy to affected breast site, the RR of breast cancer rises from 4.1 for 7 to 23 Gy to an eightfold increase for more than 40.5 Gy.<sup>31</sup> For lung cancer, the increased RRs from smoking appeared to multiply the elevated risks from radiotherapy (Table 1),<sup>31</sup> implying that there are large AERs for lung cancer among irradiated patients who smoke, whereas nonsmokers experience little excess risk from radiation.<sup>31,36</sup> It was estimated that 9.6% of all lung cancers after HL were due to treatment, 24% were due to smoking, and 63% were due to treatment and smoking in combination.<sup>31</sup>

Radiation field size is an important risk factor for solid cancer risk. For breast cancer, it has been shown that smaller radiation volumes than mantle field are associated with substantially lower risk,<sup>9,26,28</sup> which is important in view of the smaller field sizes currently used in HL treatment.<sup>9,37</sup> Furthermore, alkylating chemotherapy and pelvic radiotherapy appear to reduce the risk of radiotherapy-associated breast cancer, due to the high frequency of premature menopause after chemotherapy.<sup>9,26,28,32,33</sup> A long vs short duration of intact ovarian function after radiation was a strong predictor of subsequent breast cancer risk. Women with <10 years of intact ovarian function after radiotherapy had a 70% decreased risk of breast cancer compared with women with 10 to 20 years of ovarian function after irradiation, whereas those with >20 years of intact ovarian function after radiotherapy had 5.3-fold increased risk of breast cancer.<sup>28</sup> These results indicate that ovarian hormones are a crucial factor to promote breast tumorigenesis once radiotherapy has produced an initiating event.

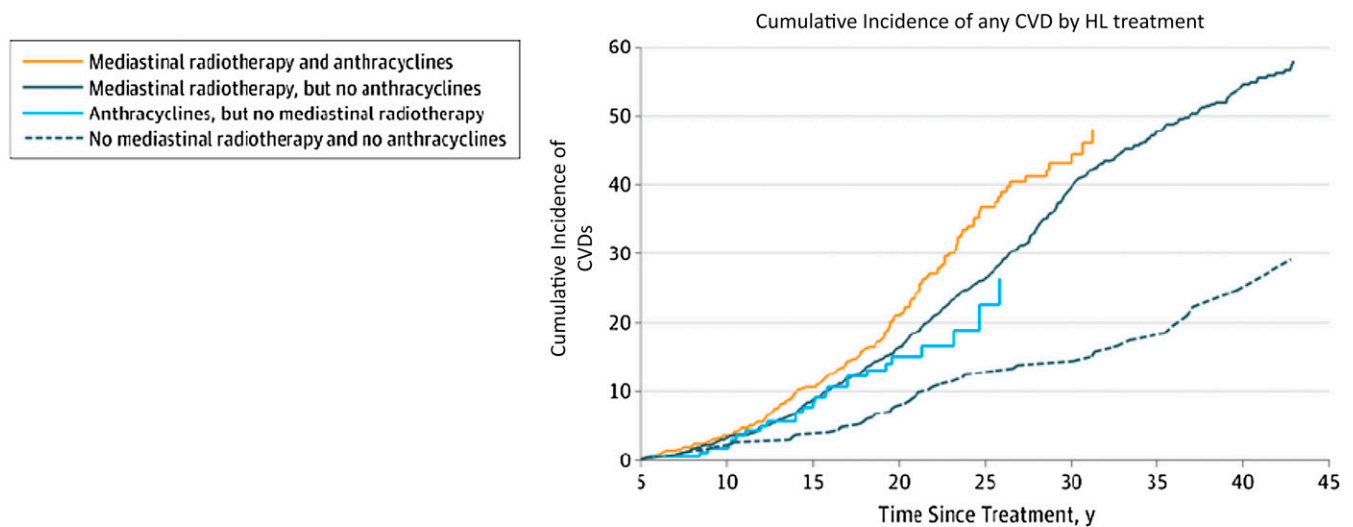
Several studies have observed that not only radiotherapy but also alkylating chemotherapy can substantially increase the risk of solid malignancy, in particular risks of lung cancer,<sup>31,38</sup> stomach, and pancreatic cancer.<sup>9,34,35</sup> Lung cancer risk after HL is increased two to greater than fourfold with increasing number of cycles of alkylating agent-containing chemotherapy, particularly nitrogen mustard, vincristine, procarbazine, and prednisolone.<sup>31,38,39</sup> For stomach cancer risk, a strong association with cumulative procarbazine dose was observed.<sup>34</sup> Although additive effects of chemotherapy and radiotherapy have been observed for lung cancer,<sup>31</sup> supramultiplicative effects were recently reported for stomach cancer. Radiation doses to the stomach of  $\geq$ 25 Gy combined with exposure to high-dose procarbazine ( $\geq$ 5600 mg/m<sup>2</sup>) were associated with a 78-fold increased risk of stomach cancer, compared with RRs of 2.8 and 1.2 for exposure to  $\geq$ 25 Gy of radiation alone and exposure to high-dose procarbazine ( $\geq$ 5600 mg/m<sup>2</sup>) alone, respectively.<sup>34</sup> A

recent study on risk factors for pancreatic cancer after HL also showed increasing risk with a larger number of alkylating agent-containing cycles of chemotherapy. The RR of pancreatic cancer for patients treated with both subdiaphragmatic radiation ( $\geq$ 10 Gy to affected subsite of pancreas) and  $\geq$ 6 alkylating agent cycles, compared with patients with neither treatment, was 17.9. The joint effect of these 2 treatments was significantly greater than additive and nonsignificantly greater than multiplicative. High risks were especially observed among patients receiving  $\geq$ 8400 mg/m<sup>2</sup> of procarbazine with nitrogen mustard or  $\geq$ 3900 mg/m<sup>2</sup> of cyclophosphamide.<sup>35</sup>

A recent Dutch study examined whether HL patients treated in the 1989 to 2000 period, when less toxic treatments had been introduced, had a lower risk of second malignancy than patients treated in the 1965 to 1988 period.<sup>9</sup> Although the cumulative incidence of leukemia was significantly lower in the most recent treatment era, no such decrease was observed for solid malignancies, even though smaller radiotherapy volumes were associated with lower risk in multivariable analysis, especially for breast cancer. The surprising absence of a declining overall risk of solid malignancy was attributed to a number of factors, such as later than expected wide application of changes in radiotherapy policy and changes in chemotherapy regimens. Trends in breast cancer risk were examined in more detail. Although a larger proportion of more recently treated female HL survivors had received less extensive supradiaphragmatic irradiation, there was little evidence that women treated in the most recent period (1989 to 2000) experienced lower breast cancer risk. Interpretation of the surprising absence of a decline in second breast cancers with less radiation exposure was complicated. Firstly, apparently the changes in RT policies were not applied widely enough yet to lower breast cancer risk. Secondly, the absence of a decrease in breast cancer incidence could be partly attributed to earlier breast cancer detection in more recently treated women because of increased screening.<sup>9</sup> Furthermore, the introduction of less gonadotoxic chemotherapy appeared to have influenced breast cancer risk. In the earlier periods, high doses of alkylating agents were frequently used, often causing premature menopause, which is associated with lower risk of radiation-associated breast cancer.

### Risk of CVD

Both radiotherapy involving the heart and anthracycline-containing chemotherapy can increase the risk of CVD in HL survivors. Radiation-induced CVD includes coronary heart disease (CHD), valvular heart disease (VHD), myocardial dysfunction, electrical



No. at risk	5	10	15	20	25	30	35	40	45
Mediastinal radiotherapy and anthracyclines	604	492	364	180	46	14	1	0	0
Mediastinal radiotherapy, but no anthracyclines	1448	1269	1097	848	552	273	119	30	30
Anthracyclines, but no mediastinal radiotherapy	169	139	105	59	13	6	1	0	0
No mediastinal radiotherapy and no anthracyclines	302	270	249	158	158	110	55	16	16

No. of events	5	10	15	20	25	30	35	40	45
Mediastinal radiotherapy and anthracyclines	22	39	47	39	9	2	0	0	0
Mediastinal radiotherapy, but no anthracyclines	48	75	102	119	123	58	32	32	32
Anthracyclines, but no mediastinal radiotherapy	3	10	8	3	1	0	0	0	0
No mediastinal radiotherapy and no anthracyclines	6	5	11	11	3	5	5	5	5

**Figure 3.** Cumulative incidence of CVDs after HL according to treatment, with death from any cause as a competing risk.

conduction abnormalities, and pericardial disease<sup>14,20,40</sup> Anthracyclines can, depending on the cumulative dose, lead to both acute cardiomyopathy and chronic cardiac complications (especially heart failure [HF]).<sup>41,42</sup> Radiation- and anthracycline-associated cardiac damage have a different pathogenesis, which also appears to differ from the general population. Radiation may damage the endothelium of blood vessels.<sup>43</sup> In large arteries, this damage may lead to accelerated atherosclerosis and an increased risk of vascular stenosis and thromboembolism.<sup>44</sup> Animal studies have shown that radiation predisposes to the formation of unstable plaques, that are more likely to rupture and cause a fatal heart attack or stroke. Cardiotoxicity following anthracyclines is typically associated with loss of myocardial mass, leading to progressive cardiac remodelling and dysfunction.<sup>40</sup>

Prospective screening studies among HL survivors demonstrate that clinically significant cardiovascular abnormalities, like coronary artery stenosis, coronary artery calcifications, reduced left ventricular dimensions, VHD, and conduction defects, are very common, even in asymptomatic survivors.<sup>45-48</sup>

Large cohort studies of HL survivors show a two- to sevenfold increased risk of cardiac death (mainly myocardial infarction [MI]), depending on the age of the patients (stronger risk increases for radiotherapy at younger ages), treatment regimens used, and follow-up time.<sup>2,5,49,50</sup> Furthermore, three- to sixfold increased SIRs of CHD, VHD, and HF are observed in patients treated for HL relative to the general population, also after long-term follow up.<sup>11,51,52</sup> The persistence of increased SIRs over prolonged follow-up times is of concern because they imply increasing AERs over time, due to the rising incidence of CVDs with age.

van Nimwegen et al recently examined long-term CVD risk in 2524 5-year survivors of HL who were treated in The Netherlands between 1965 and 1996. After 35 years of follow up, HL survivors still had a four- to sixfold increased SIR of CHD or HF compared with the general population, corresponding to 81 865 excess events of CHD and HF per 10 000 person-years.<sup>11</sup> Within the cohort, 40-year cumulative incidence of CVD was 50%. In patients treated before 25 years of age, the highest RRs were seen (for CHD and VHD, as well as HF), but substantial AERs were also observed for patients treated at older ages. For patients treated before 25 years of age, cumulative incidences at 60 years were 20%, 31%, and 11% for CHD, VHD, and HF as first events, respectively. Patients treated before 25 years of age reached a given cumulative incidence 10 to 20 years earlier than patients treated at an older age. For example, a 50-year-old survivor treated before 25 years of age experienced the same absolute risk as a 61-year-old survivor treated at 35 to 50 years of age.<sup>11</sup>

In the Dutch HL cohort, mediastinal radiotherapy increased the risks of developing CHD (2.7-fold), VHD (6.6-fold), and also HF (2.7-fold), as first cardiovascular events.<sup>11</sup> Anthracycline-containing chemotherapy increased the risks of VHD (1.5-fold) and HF (threefold) as first cardiovascular events. Patients treated with mediastinal radiotherapy had a 40-year cumulative incidence of any CVD of 54.6% compared with 24.7% in patients not treated with mediastinal radiotherapy or anthracyclines. The cumulative incidence of CVD after HL according to treatment exposure is shown in Figure 3.<sup>11</sup> After 20 years of follow up, anthracycline-associated risks of VHD and HF (as first events) were still significantly elevated.

Another large study assessed CVD risk in 9 trials conducted by the European Organization for Research and Treatment of Cancer in the

**Table 2. Summary of follow-up recommendations for HL survivors according to NCCN, COG, and the Dutch BETER Consortium according to types of major late effects**

Treatment exposures	NCCN	COG	Dutch BETER consortium
Second malignancy	<p>Breast cancer: Annual mammography and breast MRI screening, to start 8- to 10-y post-treatment, or at age 40, whichever comes first, for women with a history of chest RT between ages 10 and 30 y</p> <p>Lung cancer: Consider chest imaging for survivors with &gt;30 pack-y history of smoking</p> <p>Colorectal cancer: Colonoscopy every 10 y for survivors age <math>\geq 50</math>, or by the age 40 for survivors at increased risk for colorectal cancer due to treatment history</p> <p>Skin cancer: Counseling on skin cancer risks</p>	<p>Breast cancer: Annual breast self-examination beginning at puberty until age 25, then every 6 mo Annual mammogram and breast MRI, beginning 8 y after radiation or at age 25, whichever occurs last</p> <p>Lung cancer: Imaging and surgery and/or oncology consultation, as clinically indicated</p> <p>Colorectal cancer: Colonoscopy every 5 y, beginning at 10 y after radiation or at age 35, whichever comes first, for patients with RT of <math>\geq 30</math> Gy to the abdominal and/or pelvic region</p> <p>Thyroid nodule/cancer: Yearly thyroid examination</p> <p>Skin cancer: Annual dermatologic examination and monthly skin self-examination in patients with prior RT exposures</p>	<p>Breast cancer: Screening only recommended for women with a history of RT to chest and/or axillae before age 40: Age 25-30: annual clinical breast examination and MRI Age 30-60: annual clinical breast examination, mammography, and MRI Age 60-70: biennial clinical breast examination and mammography Age 70-75: biennial mammography through population screening</p> <p>Thyroid nodule/cancer: See screening for thyroid dysfunction At this moment, screening for lung cancer, colorectal cancer, and skin cancer are not recommended, as evidence is lacking that this is effective in reducing morbidity and mortality</p>
CVD	<p>Cardiac disease: Consider stress test and echocardiogram at 10-y intervals after treatment of patients with a history of chest RT</p> <p>Carotid disease: Consider carotid ultrasound at 10-y intervals in patients with a history of neck RT</p> <p>CVD risk factors: Annual blood pressure, lipids, and aggressive management of cardiovascular risk factors</p>	<p>Cardiac disease: Periodic echocardiogram and ECG with frequency dependent on age at treatment exposure and cumulative doses in patients with a history of treatment with anthracyclines or chest RT</p> <p>Carotid disease: Examination for diminished carotid pulses and carotid bruits in patients treated with neck RT</p>	<p>Screening only recommended after: Cardiotoxic CT with cumulative doses equivalent to doxorubicin <math>\geq 300</math> mg/m<sup>2</sup> Chest RT only or combined with cardiotoxic CT, independent of dose</p> <p>CVD: Echocardiogram every 5 y if treated with cardiotoxic CT; only once, 15 y after diagnosis, when treated with RT only Every 5 y, up to age 70: physical examination (eg, blood pressure), lipids, glucose, biomarkers (BNP or NTproBNP) ECG once 5 y after diagnosis</p>
Endocrinopathies	<p>Hypothyroidism: Annual TSH for patients with a history of neck irradiation</p> <p>Infertility: Reproductive counseling</p>	<p>Hypothyroidism: Annual TSH, free T4</p> <p>Infertility: Periodic follicle-stimulating FSH LH, and estradiol screening in patients with exposure to alkylating agents or pelvic RT</p>	<p>Thyroid dysfunction: For patients with a history of neck RT: Every 1-3 y palpation of thyroid gland Annual TSH, if abnormal: free T4</p> <p>Infertility: When treated with alkylating CT or RT to gonadal region (before age 40 in women: counseling about reduced fertility span Men: testosterone if hypogonadism is suspected; women: LH, FSH, and estradiol</p>

BNP, B-type natriuretic peptide; COG, Children's Oncology Group; CT, chemotherapy; ECG, electrocardiogram; FSH, follicle-stimulating hormone; LH, luteinizing hormone; MRI, magnetic resonance imaging; T4, thyroxine; TSH, thyroid stimulating hormone.

period from 1964 to 2004.<sup>15</sup> In multivariable analysis, mean heart radiation dose and the cumulative dose of anthracyclines had a statistically significant effect on CVD risk. The hazard ratio for radiotherapy was 1.015 per 1 Gy increase in mean heart dose. For the cumulative dose of anthracyclines in doxorubicin-equivalents, the hazard ratio was 1.077 per 50 mg/m<sup>2</sup> anthracycline.

Data on the possible interaction between chemotherapy and radiotherapy, and risk of cardiac diseases are scarce. Several studies suggest that anthracycline-containing chemotherapy further increases the radiotherapy-related risk of VHD and HF by two- to threefold compared with radiotherapy alone.<sup>11,51,53</sup> This effect was additive in a recent report<sup>11</sup> and more than additive in another study.<sup>53</sup>

Three recent case-control studies addressed the shape of the radiation dose-response curve for CHD and VHD after HL treatment.<sup>54-56</sup> The first study included 325 patients diagnosed with CHD as their first cardiovascular event after HL.<sup>56</sup> Radiation charts and simulation radiographs were used to estimate mean heart dose for all cases and 1204 matched controls. The median interval between HL and CHD was 19 years. Risk of CHD increased linearly with increasing mean heart dose (excess RR per Gy: 7.4%), with a 2.5-fold increased risk for patients receiving a mean heart dose of 20 Gy (compared with no mediastinal RT). In the study of risk factors for VHD after HL, the radiation dose-response relationship was linear with upward curvature.<sup>54</sup> A similar case-control study of cardiomyopathy and HF after HL showed a linear relationship with the mean left ventricular dose (MLVD). Relative to 0 Gy, HF rates following MLVDs of 1-15, 16-20, 21-25, and  $\geq 26$  Gy were 1.27, 1.65, 3.84, and 4.39, respectively ( $P < .001$ ). Anthracycline-containing chemotherapy increased the HF rate by a factor of 2.83, and there was no significant interaction with MLVD. Twenty-five year cumulative risks of HF following MLVDs of 0-15 Gy, 16-20 Gy, and  $\geq 21$  Gy were 4.4%, 6.2%, and 13.3%, respectively, in patients treated without anthracycline-containing chemotherapy, and 11.2%, 15.9%, and 32.9%, respectively, in patients treated with anthracyclines.<sup>55</sup>

The establishment of a clear radiation dose-response for different CVDs implies substantially lower CVD risks for more recently treated HL patients who received involved-node or involved-site radiotherapy and lower radiation doses.

An important question is whether conventional cardiovascular risk factors influence CVD risk in survivors who received cardiotoxic treatments and whether such factors modify treatment-related risk of CVD. Several studies show that hypertension, hypercholesterolemia, diabetes, and recent smoking do increase CVD risk in HL and childhood cancer survivors,<sup>51-53,56,57</sup> but few studies could examine risk modification. Two recent reports show additive effects of smoking on the risks of CVD from mediastinal radiotherapy and anthracyclines.<sup>11,56</sup> The above case-control study of risk factors for CHD after HL treatment showed that hypertension was an independent risk factor for CHD (RR = 1.85), which added to the radiotherapy-associated risk but did not modify it.<sup>56</sup> However, a recent study in childhood cancer survivors showed that the combined effect of chest radiotherapy plus hypertension resulted in potentiation of risk for major cardiac events beyond that anticipated on the basis of an additive effect.<sup>57</sup> Two studies examined the effects of physical inactivity on CVD risk after HL.<sup>56,58</sup> Jones et al found a lower risk of treatment-related cardiac events in childhood HL survivors who reported  $\geq 9$  metabolic equivalent hours per week, which is equivalent to  $\sim 2$  to 2.5 hours of cycling or walking.<sup>58</sup> van Nimwegen et al also showed that patients with a high level of physical activity ( $\geq 4$  hours a week of walking, cycling, or sports) had a considerably lower risk of developing CHD than patients who were inactive ( $< 1$  hour a week) (RR = 0.52).<sup>56</sup>

The above findings underline the importance of control of conventional CVD risk factors, including maintenance or adoption of a healthy lifestyle after HL treatment. Both additive and supra-additive effects of conventional CVD risk factors and treatment imply that early diagnosis and appropriate management of CVD risk factors may substantially reduce the risk of premature cardiac disease.

Treatment of HL has changed dramatically over time. The risk of radiotherapy-related CVD after HL is expected to decrease

significantly over time, because fewer patients receive combined modality treatment and radiotherapy policies have changed.<sup>37,59</sup> If radiotherapy is applied, the target volumes are smaller, 3-dimensional conformal radiotherapy planning is used, and the applied dose is lower.<sup>37</sup> Additional advanced techniques such as deep-inspiration breath-hold and intensity modulated RT with butterfly techniques further significantly reduce doses to the heart and cardiac substructures.<sup>60,61</sup> The risk of anthracycline-related HF, however, likely increases because of the increased use of anthracyclines. A recent report showed that cumulative incidence curves of CVD were similar for HL patients treated from 1965 to 1974, 1975 to 1984, and 1985 to 1995, implying that a large population of survivors remains at increased CVD risk for many years to come.<sup>11</sup>

### Surveillance for late effects

The need for long-term follow up of HL survivors is increasingly recognized, as illustrated by the publication of surveillance guidelines for HL and childhood HL survivors, with special attention to key late effects such as SMNs and CVD. The National Comprehensive Cancer Network (NCCN) and the Dutch Better Care After HL: Evaluation of Long-Term Treatment Effects and Screening Recommendations (BETER) consortium provide guidelines for monitoring for late effects specifically for HL survivors 5 years after initial treatment, including types of testing and their timing.<sup>62,63</sup> The long-term follow-up guidelines from the Children's Oncology Group present detailed recommendations according to specific treatment exposures and potential impact to body sites, several of which are also relevant to HL survivors.<sup>64</sup> Table 2 shows surveillance recommendations from the 3 groups according to late effect types. It should be realized that the evidence underlying most screening guidelines is rather limited. Although much has been published about the magnitude of the risks and treatment-related risk factors for late effects, much less is known about the diagnostic value, efficacy, and cost-effectiveness of different screening methods. For several guidelines, evidence from other relevant high-risk groups was used, which might be inappropriate because the pathogenesis of treatment-associated SMNs and CVD may differ from that in the general population. Because many guidelines are in fact based on expert opinion, there are large differences between them. Although all agree on annual breast cancer screening with mammography and MRI, starting 8 years after chest RT, recommendations regarding screening for lung and colorectal cancers and CVD differ greatly. Evaluation of the current screening guidelines in terms of diagnostic value and cost-effectiveness is therefore crucially important, as well as timely updates of the guidelines. Also, as new agents and novel radiotherapy techniques are introduced for HL, additional time is needed for their late effects to be fully appreciated, and current follow-up recommendations for HL survivors need to be updated accordingly.

Although survivorship care for childhood cancer survivors has become well organized in many countries over the past decade,<sup>65-67</sup> structured survivorship care for HL survivors is, unfortunately, largely lacking. In some countries, (subgroups of) HL survivors have been recalled for screening. For example, in the United Kingdom, female HL survivors treated with mantle field radiotherapy at a young age have been recalled and invited for breast cancer screening,<sup>68</sup> and in The Netherlands, all HL survivors are invited to visit a special survivorship clinic.<sup>62</sup> Evaluation of adherence (by survivors and physicians) to such programs is important. Furthermore, preventive strategies should include lifestyle and drug-based interventions to minimize exposure to conventional risk factors for cancer and CVD.



## Correspondence

Flora E. van Leeuwen, Department of Epidemiology, Division of Psychosocial Research and Epidemiology Netherlands, Cancer Institute Plesmanlaan 121, 1066 CX Amsterdam, The Netherlands; e-mail: f.v.leeuwen@nki.nl.

## References

1. Favier O, Heutte N, Stamatoullas-Bastard A, et al; European Organization for Research and Treatment of Cancer (EORTC) Lymphoma Group and the Groupe d'Etudes des Lymphomes de l'Adulte (GELA). Survival after Hodgkin lymphoma: causes of death and excess mortality in patients treated in 8 consecutive trials. *Cancer*. 2009;115(8):1680-1691.
2. Ng AK, Bernardo MP, Weller E, et al. Long-term survival and competing causes of death in patients with early-stage Hodgkin's disease treated at age 50 or younger. *J Clin Oncol*. 2002;20(8):2101-2108.
3. Kiserud CE, Loge JH, Fosså A, Holte H, Cvancarova M, Fosså SD. Mortality is persistently increased in Hodgkin's lymphoma survivors. *Eur J Cancer*. 2010;46(9):1632-1639.
4. Hodgson DCGE, Grunfeld E, Gunraj N, Del Giudice L. A population-based study of follow-up care for Hodgkin lymphoma survivors: opportunities to improve surveillance for relapse and late effects. *Cancer*. 2010;116(14):3417-3425.
5. Aleman BM, van den Belt-Dusebout AW, Klokmann WJ, Van't Veer MB, Bartelink H, van Leeuwen FE. Long-term cause-specific mortality of patients treated for Hodgkin's disease. *J Clin Oncol*. 2003;21(18):3431-3439.
6. Matasar MJ, Ford JS, Riedel ER, Salz T, Oeffinger KC, Straus DJ. Late morbidity and mortality in patients with Hodgkin's lymphoma treated during adulthood. *J Natl Cancer Inst*. 2015;107(4):djv018.
7. Abrahamson AF, Loge JH, Hannisdal E, Holte H, Kvaløy S. Socio-medical situation for long-term survivors of Hodgkin's disease: a survey of 459 patients treated at one institution. *Eur J Cancer*. 1998;34(12):1865-1870.
8. Schultz PN, Beck ML, Stava C, Vassilopoulou-Sellin R. Health profiles in 5836 long-term cancer survivors. *Int J Cancer*. 2003;104(4):488-495.
9. Schaapveld M, Aleman BMP, van Eggermond AM, et al. Second cancer risk up to 40 years after treatment for Hodgkin's lymphoma. *N Engl J Med*. 2015;373(26):2499-2511.
10. van Eggermond AM, Schaapveld M, Lugtenburg PJ, et al. Risk of multiple primary malignancies following treatment of Hodgkin lymphoma. *Blood*. 2014;124(3):319-327, quiz 466.
11. van Nimwegen FA, Schaapveld M, Janus CP, et al. Cardiovascular disease after Hodgkin lymphoma treatment: 40-year disease risk. *JAMA Intern Med*. 2015;175(6):1007-1017.
12. Hodgson DC, Gilbert ES, Dores GM, et al. Long-term solid cancer risk among 5-year survivors of Hodgkin's lymphoma. *J Clin Oncol*. 2007;25(12):1489-1497.
13. Swerdlow AJ, Cooke R, Bates A, et al; England and Wales Hodgkin Lymphoma Follow-up Group. Risk of premature menopause after treatment for Hodgkin's lymphoma. *J Natl Cancer Inst*. 2014;106(9):dju207.
14. Ng AK, van Leeuwen FE. Hodgkin lymphoma: late effects of treatment and guidelines for surveillance. *Semin Hematol*. 2016;53(3):209-215.
15. Maraldo MV, Giusti F, Vogelius IR, et al; European Organisation for Research and Treatment of Cancer (EORTC) Lymphoma Group. Cardiovascular disease after treatment for Hodgkin's lymphoma: an analysis of nine collaborative EORTC-LYSA trials. *Lancet Haematol*. 2015;2(11):e492-e502.
16. van der Kaaij MAE, Heutte N, Meijnders P, et al. Premature ovarian failure and fertility in long-term survivors of Hodgkin's lymphoma: a European Organisation for Research and Treatment of Cancer Lymphoma Group and Groupe d'Etude des Lymphomes de l'Adulte Cohort Study. *J Clin Oncol*. 2012;30(3):291-299.
17. van der Kaaij MAE, Heutte N, Le Stang N, et al; European Organisation for Research and Treatment of Cancer: EORTC Lymphoma Group; Groupe d'Etude des Lymphomes de l'Adulte. Gonadal function in males after chemotherapy for early-stage Hodgkin's lymphoma treated in four subsequent trials by the European Organisation for Research and Treatment of Cancer: EORTC Lymphoma Group and the Groupe d'Etude des Lymphomes de l'Adulte. *J Clin Oncol*. 2007;25(19):2825-2832.
18. Flechtner H, Rüffer J-U, Henry-Amar M, et al. Quality of life assessment in Hodgkin's disease: a new comprehensive approach. First experiences from the EORTC/GELA and GHSG trials. EORTC Lymphoma Cooperative Group. Groupe d'Etude des Lymphomes de l'Adulte and German Hodgkin Study Group. *Ann Oncol*. 1998;9(suppl 5):S147-S154.
19. Oerlemans S, Mols F, Nijziel MR, Lybeert M, van de Poll-Franse LV. The impact of treatment, socio-demographic and clinical characteristics on health-related quality of life among Hodgkin's and non-Hodgkin's lymphoma survivors: a systematic review. *Ann Hematol*. 2011;90(9):993-1004.
20. Aleman BMP, Cutter DJ. Cardiovascular and pulmonary late effects. In: Engert A, Younes A, eds. *Hodgkin Lymphoma: A Comprehensive Overview Hematologic Malignancies*. Cham, Switzerland: Springer International Publishing; 2014:411-425.
21. Hodgson DC, van Leeuwen FE. Second malignancy risk after treatment of Hodgkin lymphoma. In: Engert A, Younes A, eds. *Hodgkin Lymphoma: A Comprehensive Overview Hematologic Malignancies*. Cham, Switzerland: Springer International Publishing; 2014:375-409.
22. Dores GM, Coté TR, Travis LB. New malignancies following Hodgkin lymphoma, non-Hodgkin lymphoma, and myeloma. In: Curtis RE, Freedman DM, Ron E, Ries LAG, Hacker DG, Edwards BK, Tucker MA, Fraumeni JF Jr, eds. *New Malignancies Among Cancer Survivors: SEER Cancer Registries, 1973-2000*. Bethesda, MD: NIH Publications; 2006; NIH Publ No. 05-5302.
23. Swerdlow AJ, Barber JA, Hudson GV, et al. Risk of second malignancy after Hodgkin's disease in a collaborative British cohort: the relation to age at treatment. *J Clin Oncol*. 2000;18(3):498-509.
24. Dores GM, Metayer C, Curtis RE, et al. Second malignant neoplasms among long-term survivors of Hodgkin's disease: a population-based evaluation over 25 years. *J Clin Oncol*. 2002;20(16):3484-3494.
25. Bhatia S, Yasui Y, Robison LL, et al; Late Effects Study Group. High risk of subsequent neoplasms continues with extended follow-up of childhood Hodgkin's disease: report from the Late Effects Study Group. *J Clin Oncol*. 2003;21(23):4386-4394.
26. Swerdlow AJ, Cooke R, Bates A, et al. Breast cancer risk after supra-diaphragmatic radiotherapy for Hodgkin's lymphoma in England and Wales: a National Cohort Study. *J Clin Oncol*. 2012;30(22):2745-2752.
27. Ng AK, Bernardo MV, Weller E, et al. Second malignancy after Hodgkin disease treated with radiation therapy with or without chemotherapy: long-term risks and risk factors. *Blood*. 2002;100(6):1989-1996.
28. De Bruin ML, Sparidans J, van't Veer MB, et al. Breast cancer risk in female survivors of Hodgkin's lymphoma: lower risk after smaller radiation volumes. *J Clin Oncol*. 2009;27(26):4239-4246.
29. Moskowitz CS, Chou JF, Wolden SL, et al. Breast cancer after chest radiation therapy for childhood cancer. *J Clin Oncol*. 2014;32(21):2217-2223.
30. Kaldor JM, Day NE, Clarke EA, et al. Leukemia following Hodgkin's disease. *N Engl J Med*. 1990;322(1):7-13.
31. Travis LB, Gospodarowicz M, Curtis RE, et al. Lung cancer following chemotherapy and radiotherapy for Hodgkin's disease. *J Natl Cancer Inst*. 2002;94(3):182-192.
32. Travis LB, Hill DA, Dores GM, et al. Breast cancer following radiotherapy and chemotherapy among young women with Hodgkin disease. *JAMA*. 2003;290(4):465-475.
33. van Leeuwen FE, Klokmann WJ, Stovall M, et al. Roles of radiation dose, chemotherapy, and hormonal factors in breast cancer following Hodgkin's disease. *J Natl Cancer Inst*. 2003;95(13):971-980.
34. Morton LM, Dores GM, Curtis RE, et al. Stomach cancer risk after treatment for Hodgkin lymphoma. *J Clin Oncol*. 2013;31(27):3369-3377.
35. Dores GM, Curtis RE, van Leeuwen FE, et al. Pancreatic cancer risk after treatment of Hodgkin lymphoma. *Ann Oncol*. 2014;25(10):2073-2079.
36. Gilbert ES, Stovall M, Gospodarowicz M, et al. Lung cancer after treatment for Hodgkin's disease: focus on radiation effects. *Radiat Res*. 2003;159(2):161-173.
37. Maraldo MV, Brodin NP, Aznar MC, Vogelius IR, et al. Estimated risk of cardiovascular disease and secondary cancers with modern highly conformal radiotherapy for early-stage mediastinal Hodgkin lymphoma. *Ann Oncol*. 2013;24(8):2113-2118.

38. Swerdlow AJ, Schoemaker MJ, Allerton R, et al. Lung cancer after Hodgkin's disease: a nested case-control study of the relation to treatment. *J Clin Oncol*. 2001;19(6):1610-1618.
39. Swerdlow AJ, Higgins CD, Smith P, et al. Second cancer risk after chemotherapy for Hodgkin's lymphoma: a collaborative British cohort study. *J Clin Oncol*. 2011;29(31):4096-4104.
40. Aleman BMP, Moser EC, Nuver J, et al. Cardiovascular disease after cancer therapy. *EJC Suppl*. 2014;12(1):18-28.
41. Lipshultz SE, Adams MJ, Colan SD, et al; American Heart Association Congenital Heart Defects Committee of the Council on Cardiovascular Disease in the Young, Council on Basic Cardiovascular Sciences, Council on Cardiovascular and Stroke Nursing, Council on Cardiovascular Radiology. Long-term cardiovascular toxicity in children, adolescents, and young adults who receive cancer therapy: pathophysiology, course, monitoring, management, prevention, and research directions: a scientific statement from the American Heart Association. [published correction appears in *Circulation*. 2013;128(19):e394]. *Circulation*. 2013;128(17):1927-1995.
42. Lipshultz SE, Cochran TR, Franco VI, Miller TL. Treatment-related cardiotoxicity in survivors of childhood cancer. *Nat Rev Clin Oncol*. 2013;10(12):697-710.
43. Stewart FA, Hoving S, Russell NS. Vascular damage as an underlying mechanism of cardiac and cerebral toxicity in irradiated cancer patients. *Radiat Res*. 2010;174(6):865-869.
44. Stewart FA, Heeneman S, Te Poele J, et al. Ionizing radiation accelerates the development of atherosclerotic lesions in ApoE<sup>-/-</sup> mice and predisposes to an inflammatory plaque phenotype prone to hemorrhage. *Am J Pathol*. 2006;168(2):649-658.
45. Daniëls LA, Krol SDG, de Graaf MA, et al. Impact of cardiovascular counseling and screening in Hodgkin lymphoma survivors. *Int J Radiat Oncol Biol Phys*. 2014;90(1):164-171.
46. Heidenreich PA, Schnittger I, Strauss HW, et al. Screening for coronary artery disease after mediastinal irradiation for Hodgkin's disease [published correction appears in *J Clin Oncol*. 2007;25(12):1635]. *J Clin Oncol*. 2007;25(1):43-49.
47. Küpeli S, Hazirolan T, Varan A, et al. Evaluation of coronary artery disease by computed tomography angiography in patients treated for childhood Hodgkin's lymphoma [published correction appears in *J Clin Oncol*. 2010;28(10):1808]. *J Clin Oncol*. 2010;28(6):1025-1030.
48. Girinsky T, M'Kacher R, Lessard N, et al. Prospective coronary heart disease screening in asymptomatic Hodgkin lymphoma patients using coronary computed tomography angiography: results and risk factor analysis. *Int J Radiat Oncol Biol Phys*. 2014;89(1):59-66.
49. Swerdlow AJ, Higgins CD, Smith P, et al. Myocardial infarction mortality risk after treatment for Hodgkin disease: a collaborative British cohort study. *J Natl Cancer Inst*. 2007;99(3):206-214.
50. Hancock SL, Tucker MA, Hoppe RT. Factors affecting late mortality from heart disease after treatment of Hodgkin's disease. *JAMA*. 1993;270(16):1949-1955.
51. Aleman BM, van den Belt-Dusebout AW, De Bruin ML, et al. Late cardiotoxicity after treatment for Hodgkin lymphoma. *Blood*. 2007;109(5):1878-1886.
52. Hull MC, Morris CG, Pepine CJ, Mendenhall NP. Valvular dysfunction and carotid, subclavian, and coronary artery disease in survivors of Hodgkin lymphoma treated with radiation therapy. *JAMA*. 2003;290(21):2831-2837.
53. Myrehaug S, Pintilie M, Tsang R, et al. Cardiac morbidity following modern treatment for Hodgkin lymphoma: supra-additive cardiotoxicity of doxorubicin and radiation therapy. *Leuk Lymphoma*. 2008;49(8):1486-1493.
54. Cutter DJ, Schaapveld M, Darby SC, et al. Risk of valvular heart disease after treatment for Hodgkin lymphoma. *J Natl Cancer Inst*. 2015;107(4):djv008.
55. Aleman BMP, van Nimwegen FA, Ntentas G, et al. A radiation dose-response relationship for risk of heart failure in survivors of Hodgkin lymphoma [abstract]. *Radiother Oncol*. 2016;119(suppl 1):S25. Abstract OC-0059.
56. van Nimwegen FA, Schaapveld M, Cutter DJ, et al. Radiation dose-response relationship for risk of coronary heart disease in survivors of Hodgkin lymphoma. *J Clin Oncol*. 2016;34(3):235-243.
57. Armstrong GT, Oeffinger KC, Chen Y, et al. Modifiable risk factors and major cardiac events among adult survivors of childhood cancer. *J Clin Oncol*. 2013;31(29):3673-3680.
58. Jones LW, Liu Q, Armstrong GT, et al. Exercise and risk of major cardiovascular events in adult survivors of childhood Hodgkin lymphoma: a report from the childhood cancer survivor study. *J Clin Oncol*. 2014;32(32):3643-3650.
59. Specht L, Yahalom J, Illidge T, et al; ILROG. Modern radiation therapy for Hodgkin lymphoma: field and dose guidelines from the International Lymphoma Radiation Oncology Group (ILROG). *Int J Radiat Oncol Biol Phys*. 2014;89(4):854-862.
60. Voong KR, McSpadden K, Pinnix CC, et al. Dosimetric advantages of a "butterfly" technique for intensity-modulated radiation therapy for young female patients with mediastinal Hodgkin's lymphoma. *Radiat Oncol*. 2014;9:94.
61. Aznar MC, Maraldo MV, Schut DA, et al. Minimizing late effects for patients with mediastinal Hodgkin lymphoma: deep inspiration breath-hold, IMRT, or both? *Int J Radiat Oncol Biol Phys*. 2015;92(1):169-174.
62. Dekker N, van 't Veer MB, Aleman BM, van Leeuwen FE, Raemaekers JM. The BETER survivorship care initiative for Hodgkin lymphoma; tailored survivorship care for late effects of treatment. *Ned Tijdschr Geneesk*. 2015;159:A9269.
63. National Comprehensive Cancer Network. Guidelines for monitoring for late effects in HL survivors. 2015. Version 2. Available at: [http://www.nccn.org/professionals/physician\\_gls/pdf/hodgkins.pdf](http://www.nccn.org/professionals/physician_gls/pdf/hodgkins.pdf). Accessed April 2016.
64. Children's Oncology Group. Long-Term Follow-Up Guidelines for Survivors of Childhood, Adolescent, and Young Adult Cancers. Version 4.0. 2014. Available at: <http://www.survivorshipguidelines.org>. Accessed April 2016.
65. McCabe MS, Partridge AH, Grunfeld E, Hudson MM. Risk-based health care, the cancer survivor, the oncologist, and the primary care physician. *Semin Oncol*. 2013;40(6):804-812.
66. Mulder RL, Kremer LCM, Hudson MM, et al; International Late Effects of Childhood Cancer Guideline Harmonization Group. Recommendations for breast cancer surveillance for female survivors of childhood, adolescent, and young adult cancer given chest radiation: a report from the International Late Effects of Childhood Cancer Guideline Harmonization Group. *Lancet Oncol*. 2013;14(13):e621-e629.
67. Armenian SH. Improving screening practices in childhood cancer survivors at risk for treatment-related heart failure. *J Clin Oncol*. 2014;32(35):3923-3925.
68. Howell SJ, Searle C, Goode V, et al. The UK national breast cancer screening programme for survivors of Hodgkin lymphoma detects breast cancer at an early stage. *Br J Cancer*. 2009;101(4):582-588.