

Fatal Blowhole Obstruction by Eel in Common Bottlenose Dolphins (*Tursiops truncatus*) in Florida, USA

Michelle Greenfield,^{1,2,5} Teresa Jablonski,¹ Anna Panike,³ David S. Rotstein,⁴ Judy St. Leger,² and Wendy Noke Durden¹ ¹Hubbs-SeaWorld Research Institute, 3830 S Highway A1A, #4-181, Melbourne Beach, Florida 32951, USA; ²College of Veterinary Medicine, Cornell University, 602 Tower Road, Ithaca, New York 14853, USA; ³Florida Fish and Wildlife Conservation Commission, Marine Mammal Pathobiology Laboratory, 3700 54th Ave S, St. Petersburg, Florida 33711, USA; ⁴Marine Mammal Pathology Services, 19117 Bloomfield Road, Olney, Maryland 20832, USA; ⁵Corresponding author (email: Mg2375@cornell.edu)

ABSTRACT: Esophageal and pharyngeal obstruction are commonly reported in marine mammals, but asphyxiation from blowhole and nasal cavity obstruction has been reported only rarely: in two long-finned pilot whales (*Globicephala melas*), several harbor porpoises (*Phocoena phocoena*), and one common bottlenose dolphin (*Tursiops truncatus*). We describe two cases of blowhole obstruction and subsequent asphyxiation in bottlenose dolphins caused by eels. A whip eel (*Bascanichthys scuticaris*) was found obstructing the blowhole of a deceased dolphin from the Indian River Lagoon, Florida, US (2011) and a shrimp eel (*Ophichthus gomesii*) was found obstructing the blowhole of a deceased dolphin from Tampa Bay, Florida (2020). Normally, the respiratory and digestive tracts of cetaceans do not communicate. Consuming large or oddly shaped prey can result in laryngeal displacement and subsequent interaction between the two systems. It is likely the eels entered the oral cavity while the dolphins were consuming or playing with prey, and laryngeal displacement enabled the eels to slither into and become stuck in the nasal passage, causing asphyxiation. These novel findings underscore the importance of continued investigation into causes of mortality in stranded marine mammals and can contribute to the knowledge of feeding ecology in bottlenose dolphins. As changing environmental conditions contribute to shifts in prey availability and abundance, mortality due to prey-related asphyxiation could become more common in odontocetes.

Key words: Asphyxiation, bottlenose dolphin, eel, mortality, *Tursiops truncatus*.

Common bottlenose dolphins (*Tursiops truncatus*) are resident in Florida's estuaries along the east (Indian River Lagoon; IRL) and US west coasts (Tampa Bay; Odell and Asper 1990; Urian et al. 2009). Life history patterns (Stolen and Barlow 2003; Wells 2014) and mortality causes have been well-studied in

these regions, including infectious disease (Bossart et al. 2003), anthropogenic factors (Wells et al. 1998; Stolen et al. 2013a), and biotoxins (Twiner et al. 2011). Asphyxiation, although uncommon, has been reported with peracute underwater entrapment involving fishing gear (Epple et al. 2020). Fatal asphyxiation caused by prey lodged in the pharynx, larynx, and esophagus has been reported in bottlenose dolphins (Mignucci-Giannoni et al. 2009; Stolen et al. 2013b) and harbor porpoises (*Phocoena phocoena*; Siebert et al. 2001). There is only one previously documented nasal cavity asphyxiation in bottlenose dolphins, in which a dab (*Limanda limanda*) occluded the nasal cavity of a dolphin off the coast of Wales (Perkins et al. 2015). Nasal obstruction by fish with subsequent asphyxiation also has been reported in two long-finned pilot whales (*Globicephala melas*) in the North Sea (IJsseeldijk et al. 2015) and in several harbor porpoises off the US west coast (Wilkin et al. 2012; Elliser et al. 2020; Gross et al. 2020).

We documented two cases of fatal blowhole obstruction in bottlenose dolphins, as part of long-term marine mammal stranding mortality projects in Florida. Complete necropsies were conducted, and tissue samples were processed for histologic evaluation, including, but not limited to, brain, heart, trachea, lung, liver, kidney, spleen, lymph nodes, bladder, skin, esophagus, stomach, pancreas, and intestine. On 8 February 2011, a 164-cm female bottlenose dolphin, estimated to be <2 yr old (Stolen and Barlow 2003), was recovered from the IRL (28.9590583, -80.873686). The carcass was in good nutritional condition with minimal decomposition. A 65-cm whip eel

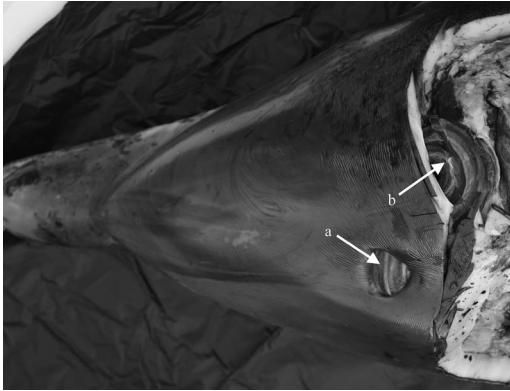


FIGURE 1. Whip eel (*Bascanichthys scuticaris*) in situ within the blowhole (a) and opened vestibular sac (b) of a 164-cm female bottlenose dolphin (*Tursiops truncatus*) observed on 8 February 2011 in the Indian River Lagoon, Florida, USA. Eel presence resulted in fatal obstructive asphyxiation. Rostrum is positioned to the left (Case 1, 2011).

(*Bascanichthys scuticaris*) was found coiled within the vestibular sac of the upper respiratory system. The broadside of the eel was visible at the blowhole opening, and its head was found in the vestibular sac to the right of the blowhole (Fig. 1). The walls of the vestibular sacs were thin and dilated due to the eel's presence. The lungs contained minimal froth, lungworms, and yellow calcareous deposits (common findings). The esophagus, larynx, and trachea were unremarkable. A nearly intact 15-cm fish and an intact shrimp were present in the forestomach. Histopathologic findings included chronic-active interstitial pneumonia, chronic renal interstitial nephritis, eosinophilic and granulomatous lymphadenitis, and granulomatous dermatitis. There was no evidence of systemic infection or organ-specific changes that would have significantly contributed to death. The findings were consistent with fatal obstructive asphyxiation from the eel in the nasal cavity.

A second dolphin was recovered in Tampa Bay (27.643591, -82.735391) on 9 March 2020. The 233-cm female carcass was moderately decomposed, in good nutritional condition (172 kg), and the mammary glands expressed milk. The head and caudal portion of a 63 cm shrimp eel (*Ophichthus gomesii*)



FIGURE 2. Shrimp eel (*Ophichthus gomesii*) in the blowhole and upper nasal passage of an adult female 233-cm bottlenose dolphin (*Tursiops truncatus*) observed on 9 March 2020 in Tampa Bay, Florida, USA. Eel presence resulted in fatal obstructive asphyxiation. Rostrum is positioned to the left (Case 2, 2020).

protruded from the blowhole (Fig. 2); the remaining portion was coiled in the distended vestibular sac. The larynx appeared normal. Approximately 150 mL of fish bones, otoliths, and lenses were present in the forestomach. A 5.2-cm-long stingray barb tracked from a well-healed penetration scar on the ventral right lateral aspect of the dolphin's thoracic region, through the parietal pleura and right lung into the pericardial sac. Scar tissue and numerous adhesions suggest that these findings were chronic, not the primary cause of mortality. Histopathologic findings included focal epicardial fibrosis corresponding to the stingray barb, plus mucosal edema, congestion, and hemorrhage of the nasal passage, corresponding to the site of eel entrapment. Cause of death was determined to be asphyxiation due to the eel obstructing the blowhole.

Odontocetes have a unique larynx, commonly referred to as the goosebeak, composed of an elongated epiglottic cartilage and paired elongated corniculate cartilages of the arytenoid (Fig. 3; Reidenberg and Laitman 1987). The goosebeak extends through a small opening in the roof of the pharynx, inserting into a vertical nasal passage. A palatopharyngeal sphincter muscle allows muscular control over the larynx and creates a laryngeal plug, generating greater separation between the respiratory and digestive tract than is seen

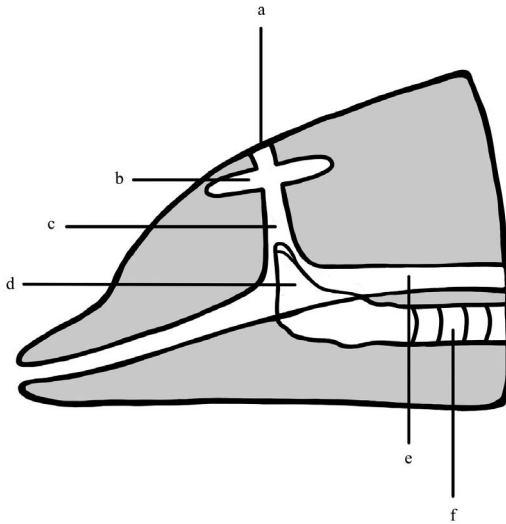


FIGURE 3. Bottlenose dolphin (*Tursiops truncatus*) upper respiratory anatomy: (a) blowhole, (b) vestibular sacs, (c) nasal passage, (d) goosebeak, (e) esophagus, (f) trachea.

in other mammals (Reidenberg and Laitman 1987). Normally, the respiratory and digestive tracts do not communicate, enabling prey ingestion underwater. Although choking and asphyxiation associated with fish ingestion is not unknown in bottlenose dolphins (Mignucci-Giannoni et al. 2009; Stolen et al. 2013b), there is only one previous reported case of nasal asphyxiation (Perkins et al. 2015). Since cetaceans rely upon their nasal passage for breathing, complete obstruction by a foreign body in the nasal cavities will result in insufficient intake of oxygen and subsequent death.

While not a common prey item, eel remains have been observed in the stomach content of bottlenose dolphins in the IRL, Sarasota Bay, Florida, and along the mid-Atlantic coast (Barros 1993; Barros and Wells 1998; Gannon and Waples 2004). In these asphyxiation cases, it is possible that during play or deglutition, the erratic movement of the eel in coordination with the dolphin's reaction allowed the eel access to the goosebeak and ultimately the nasal passage. Dolphins, particularly younger individuals, have been found to play with eels including letting them slither through their jaws (Brown and Norris 1956). In the first

case, perhaps the calf was playing with or practicing foraging on an uncommon prey item. Once lodged in the nasal passage, the eel would have impeded the dolphin's ability to breathe. Due to high energetic demands, adult females significantly increase food consumption during lactation; this can include targeting larger or riskier prey species (Reddy et al. 1994; Elliser et al. 2020). Given the strong closure mechanism of the blowhole, it is unlikely the eel entered the blowhole directly in case two but rather that it was consumed as prey.

Shifts to novel prey species such as those that are larger, have longer spines, or have higher agility can pose a risk to dolphins during consumption. In recent years, the IRL has undergone several large-scale ecosystem changes, resulting in catastrophic seagrass loss (Morris et al. 2016). Seagrass meadows provide critical habitat to prey species consumed by dolphins (Barros and Wells 1998); thus, it is feasible that significant IRL habitat alterations could result in shifts in prey consumption (Powell and Wells 2011). Similarly, on the west coast, long-lasting red tide blooms have resulted in massive fish-kills, which can deplete important fish populations and result in shifts in prey (Gannon et al. 2009). Although further research is necessary to understand the effects of shifting prey availability, our report provides evidence that there can be negative consequences associated with novel prey species.

Dolphins are considered obligate nasal breathers, but recent discoveries propose they can breathe through their mouths upon manipulation of the goosebeak (Dawson et al. 2017). One Hector's dolphin (*Cephalorhynchus hectori*) has been observed to breathe only through its mouth rather than blowhole (Dawson et al. 2017). Current hypotheses for this behavior include a blocked or injured blowhole, a tumor, or a foreign object stuck in its nasal passage. Although the duration of the eel's presence in the nasal passageways in case one is unknown, edema, congestion, and hemorrhage in case two suggests that death was acute. The eels also presented with minimal decomposition, sug-

gesting they were not in the nasal passageways very long before each dolphin's death. Accordingly, despite their capacity to shift breathing patterns, it is unlikely these dolphins did so, resulting in asphyxiation.

These novel findings underscore the importance of continued investigation into the cause of mortality in stranded marine mammals. Changing environmental conditions and the introduction of foreign species to new regions can contribute to shifts in prey availability and abundance (Stolen et al. 2013b; Elliser et al. 2020). Mortality due to asphyxiation involving some prey species could create a more significant threat to odontocetes at large.

We thank Volusia County Environmental Management: Rob Kirby, Shelly Webster, and staff and volunteers at the MMPL, particularly Brandon Bassett, Brittany Barbeau, Sean Tennant, and Tara Whitcomb for their assistance with these unusual cases. We are grateful to FWRI personnel Eric Post, Kim Bonvechio, and Theresa Warner for their assistance with eel species identification. This work was partially funded by the John H. Prescott Marine Mammal Rescue Assistance grant (NA10NMF4390253), SeaWorld Busch Gardens Conservation Fund, Discover Florida Ocean's License Plate, Brevard County Tourism and Development Council, and through the National Fish and Wildlife Foundation. Stranded dolphins were examined under a Stranding Agreement with NOAA Fisheries and through section 109 h of the Marine Mammal Protection Act.

LITERATURE CITED

- Barros, NB. 1993. *Feeding ecology and foraging strategies of bottlenose dolphins on the central east coast of Florida*. PhD dissertation, University of Miami, Coral Gables, Florida, 328 pp.
- Barros NB, Wells RS. 1998. Prey and feeding patterns of resident bottlenose dolphins (*Tursiops truncatus*) in Sarasota Bay, Florida. *J Mammal* 79:1045–1059.
- Bossart GD, Meisner R, Varela R, Mazzoil M, McCulloch S, Kilpatrick D, Friday R, Murdoch E, Mase B, Defran RH. 2003. Pathologic findings in stranded Atlantic bottlenose dolphins (*Tursiops truncatus*) from the Indian River Lagoon, Florida. *Fla Sci* 66: 226–238.
- Brown DH, Norris KS. 1956. Observations of captive and wild cetaceans. *J Mammal* 37:311–326.
- Dawson SM, Fordyce RE, Ridgway SH, Brough TE, Slooten E. 2017. Observations of a New Zealand dolphin (*Cephalorhynchus hectori*) breathing via its mouth. *Mar Mamm Sci* 33:350–355.
- Elliser CR, Calambokidis J, D'Alessandro DN, Duffield DA, Huggins JL, Rice J, Szczepaniak I, Webber M. 2020. Prey-related asphyxiation in harbor porpoises (*Phocoena phocoena*) along the U.S. west coast: Importance of American shad (*Alosa sapidissima*) on adult female harbor porpoise mortality. *Oceans* 1: 94–108.
- Epple AL, Daniel JT, Barco SG, Rotstein DS, Costidis AM. 2020. Novel necropsy findings linked to peracute underwater entrapment in bottlenose dolphins (*Tursiops truncatus*). *Front Mar Sci* 7:1–15.
- Gannon DP, Berens McCabe EJ, Camilleri SA, Gannon JG, Brueggen MK, Barleycorn AA, Palubok VI, Kirkpatrick GJ, Wells RS. 2009. Effects of *Karenia brevis* harmful algal blooms on nearshore fish communities in southwest Florida. *Mar Ecol Prog Ser* 378:171–186.
- Gannon DP, Waples DM. 2004. Diets of coastal bottlenose dolphins from the U.S. mid-Atlantic coast differ by habitat. *Mar Mamm Sci* 20:527–545.
- Gross S, Roller M, Haslob H, Grilo M, Lakemeyer J, Reckendorf A, Wohlsein P, Siebert U. 2020. Spatio-temporal accumulation of fatal pharyngeal entrapment of flatfish in harbour porpoises (*Phocoena phocoena*) in the German North Sea. *PeerJ* 8:e10160.
- Ijsseldijk LL, Leopold MF, Rebolledo ELB, Deaville R, Haelters J, Ijzer J, Jepson PD, Gröne A. 2015. Fatal asphyxiation in two long-finned pilot whales (*Globicephala melas*) caused by common soles (*Solea solea*). *PLoS One* 10:e0141951.
- Mignucci-Giannoni AA, Rosario-Delestre RJ, Alsina-Guerrero MM, Falcón-Matos L, Guzmán-Ramírez L, Williams EH, Bossart GD, Reidenberg JS. 2009. Asphyxiation in a bottlenose dolphin (*Tursiops truncatus*) from Puerto Rico due to choking on a black margate (*Anisotremus surinamensis*). *Aquat Mamm* 35:48–54.
- Morris LJ, Chamberlain RC, Jacoby CA. 2016. Summary report for the northern Indian River Lagoon. In: *Seagrass integrated mapping and monitoring report no. 2*, Yarbro LA, Carlson PR Jr, editors. Fish and Wildlife Research Institute Technical Report, TR-17 version 2. Florida Fish and Wildlife Research Institute, St. Petersburg, Florida, pp. 266–281.
- Odell DK, Asper ED. 1990. Distribution and movements of freeze-branded bottlenose dolphins in the Indian and Banana Rivers, Florida. In: *The bottlenose dolphin*, Leatherwood S, Reeves R, editors. Academic Press, San Diego, California, pp. 515–540.
- Perkins M, Deaville R, Penrose R, Jepson P. 2015. *Gluttony, the deadliest of the seven sins*. Poster BEH-09. Presented at the 29th European Cetacean Society Conference, Malta, 23–25 March, p. 112.
- Powell JR, Wells RS. 2011. Recreational fishing depredation and associated behaviors involving common

- bottlenose dolphins (*Tursiops truncatus*) in Sarasota Bay, Florida. *Mar Mamm Sci* 27:111–129.
- Reddy M, Kamolnick T, Curry C, Skaar D, Ridgeway S. 1994. Energy requirements for the bottlenose dolphin (*Tursiops truncatus*) in relation to sex, age, and reproductive status. *Mar Mamm Public Display Res* 1:26–31.
- Reidenberg JS, Laitman JT. 1987. Position of the larynx in odontoceti (toothed whales). *Anat Rec* 218:98–106.
- Siebert U, Wünschmann A, Weiss R, Frank H, Benke H, Frese K. 2001. Post-mortem findings in harbour porpoises (*Phocoena phocoena*) from the German North and Baltic Seas. *J Comp Pathol* 124:102–114.
- Stolen MK, Barlow J. 2003. A model life table for bottlenose dolphins (*Tursiops truncatus*) from the Indian River Lagoon system, Florida, U.S.A. *Mar Mamm Sci* 19:630–649.
- Stolen M, Durden WN, Mazza T, Barros N, St. Leger J. 2013a. Effects of fishing gear on bottlenose dolphins (*Tursiops truncatus*) in the Indian River Lagoon system, Florida. *Mar Mamm Sci* 29:356–364.
- Stolen M, St. Leger J, Durden WN, Mazza T, Nilson E. 2013b. Fatal asphyxiation in bottlenose dolphins (*Tursiops truncatus*) from the Indian River Lagoon. *PLoS One* 8:e66828.
- Twiner MJ, Fire S, Schwacke L, Davidson L, Wang Z, Morton S, Roth S, Balmer B, Rowles TK, Wells RS. 2011. Concurrent exposure of bottlenose dolphins (*Tursiops truncatus*) to multiple algal toxins in Sarasota Bay, Florida, USA. *PLoS One* 6:e17394.
- Urian KW, Hofmann S, Wells RS, Read AJ. 2009. Fine-scale population structure of bottlenose dolphins (*Tursiops truncatus*) in Tampa Bay, Florida. *Mar Mamm Sci* 25:619–638.
- Wells RS. 2014. Social structure and life history of bottlenose dolphins near Sarasota Bay, Florida: Insights from four decades and five generations. In: *Primates and cetaceans*, Yamagiwa J, Karczmarski L, editors. Springer, Tokyo, Japan, pp. 149–172.
- Wells RS, Hoffman S, Moore TL. 1998. Entanglement and mortality of bottlenose dolphins (*Tursiops truncatus*) in recreational fishing gear in Florida. *Fish Bull* 96:647–650.
- Wilkin SM, Cordaro J, Gulland FMD, Wheeler E, Dunkin R, Sigler T, Casper D, Berman M, Flannery M, Fire S, et al. 2012. An unusual mortality event of harbor porpoises (*Phocoena phocoena*) off central California: Increase in blunt trauma rather than an epizootic. *Aquat Mamm* 38:301–310.

Submitted for publication 4 February 2021.

Accepted 22 April 2021.