

# DNA Copy Number Variants of Known Glaucoma Genes in Relation to Primary Open-Angle Glaucoma

Yutao Liu,<sup>1,2</sup> Melanie E. Garrett,<sup>2</sup> Brian L. Yaspan,<sup>3</sup> Jessica Cooke Bailey,<sup>4</sup> Stephanie J. Loomis,<sup>5</sup> Murray Brilliant,<sup>6</sup> Donald L. Budenz,<sup>7</sup> William G. Christen,<sup>8</sup> John H. Fingert,<sup>9</sup> Douglas Gaasterland,<sup>10</sup> Terry Gaasterland,<sup>11</sup> Jae H. Kang,<sup>12</sup> Richard K. Lee,<sup>13</sup> Paul Lichter,<sup>14</sup> Sayoko E. Moroi,<sup>14</sup> Anthony Realini,<sup>15</sup> Julia E. Richards,<sup>14</sup> Joel S. Schuman,<sup>16</sup> William K. Scott,<sup>17</sup> Kuldev Singh,<sup>18</sup> Arthur J. Sit,<sup>19</sup> Douglas Vollrath,<sup>18</sup> Robert Weinreb,<sup>20</sup> Gadi Wollstein,<sup>16</sup> Donald J. Zack,<sup>21</sup> Kang Zhang,<sup>20</sup> Margaret A. Pericak-Vance,<sup>17</sup> Jonathan L. Haines,<sup>4</sup> Louis R. Pasquale,<sup>5,12</sup> Janey L. Wiggs,<sup>5</sup> R. Rand Allingham,<sup>22</sup> Allison E. Ashley-Koch,<sup>2</sup> and Michael A. Hauser<sup>2,22</sup>

<sup>1</sup>Department of Cellular Biology and Anatomy, Georgia Regents University, Augusta, Georgia, United States

<sup>2</sup>Department of Medicine, Duke University Medical Center, Durham, North Carolina, United States

<sup>3</sup>Genentech, Inc., San Francisco, California, United States

<sup>4</sup>Department of Epidemiology and Biostatistics, Case Western Reserve University, Cleveland, Ohio, United States

<sup>5</sup>Department of Ophthalmology, Massachusetts Eye & Ear, Boston, Massachusetts, United States

<sup>6</sup>Center for Human Genetics, Marshfield Clinic Research Foundation, Marshfield, Wisconsin, United States

<sup>7</sup>Department of Ophthalmology, University of North Carolina, Chapel Hill, North Carolina, United States

<sup>8</sup>Department of Medicine, Brigham and Women's Hospital, Boston, Massachusetts, United States

<sup>9</sup>Department of Ophthalmology and Visual Sciences, Carver College of Medicine, University of Iowa, Iowa City, Iowa, United States

<sup>10</sup>Eye Doctors of Washington, Chevy Chase, Maryland, United States

<sup>11</sup>Scripps Genome Center, University of California at San Diego, San Diego, California, United States

<sup>12</sup>Channing Division of Network Medicine, Brigham and Women's Hospital, Boston, Massachusetts, United States

<sup>13</sup>Bascom Palmer Eye Institute, University of Miami Miller School of Medicine, Miami, Florida, United States

<sup>14</sup>Department of Ophthalmology and Visual Sciences, University of Michigan, Ann Arbor, Michigan, United States

<sup>15</sup>Department of Ophthalmology, West Virginia University Eye Institute, Morgantown, West Virginia, United States;

<sup>16</sup>Department of Ophthalmology, UPMC Eye Center, University of Pittsburgh, Pittsburgh, Pennsylvania, United States

<sup>17</sup>Institute for Human Genomics, University of Miami Miller School of Medicine, Miami, Florida, United States

<sup>18</sup>Department of Ophthalmology, Stanford University, Palo Alto, California, United States

<sup>19</sup>Department of Ophthalmology, Mayo Clinic, Rochester, Minnesota, United States

<sup>20</sup>Department of Ophthalmology and Hamilton Glaucoma Center, University of California, San Diego, California, United States

<sup>21</sup>Wilmer Eye Institute, Johns Hopkins University Hospital, Baltimore, Maryland, United States

<sup>22</sup>Department of Ophthalmology, Duke University Medical Center, Durham, North Carolina, United States

Correspondence: Yutao Liu, 1460 Laney Walker Boulevard, CB1101, Augusta, GA 30912, USA; yutliu@gru.edu

Submitted: September 22, 2014

Accepted: November 6, 2014

Citation: Liu Y, Garrett ME, Yaspan BL, et al. DNA copy number variants of known glaucoma genes in relation to primary open-angle glaucoma. *Invest Ophthalmol Vis Sci.* 2014;55:8251-8258. DOI:10.1167/iovs.14-15712

**PURPOSE.** We examined the role of DNA copy number variants (CNVs) of known glaucoma genes in relation to primary open angle glaucoma (POAG).

**METHODS.** Our study included DNA samples from two studies (NEIGHBOR and GLAUGEN). All the samples were genotyped with the Illumina Human660W\_Quad\_v1 BeadChip. After removing non-blood-derived and amplified DNA samples, we applied quality control steps based on the mean Log R Ratio and the mean B allele frequency. Subsequently, data from 3057 DNA samples (1599 cases and 1458 controls) were analyzed with PennCNV software. We defined CNVs as those  $\geq 5$  kilobases (kb) in size and interrogated by  $\geq 5$  consecutive probes. We further limited our investigation to CNVs in known POAG-related genes, including *CDKN2B-AS1*, *TMC01*, *SIX1/SIX6*, *CAV1/CAV2*, the *LRP12-ZFPM2* region, *GAS7*, *ATOH7*, *FNDC3B*, *CYP1B1*, *MYOC*, *OPTN*, *WDR36*, *SRBD1*, *TBK1*, and *GALC*.

**RESULTS.** Genomic duplications of *CDKN2B-AS1* and *TMC01* were each found in a single case. Two cases carried duplications in the *GAS7* region. Genomic deletions of *SIX6* and *ATOH7* were each identified in one case. One case carried a *TBK1* deletion and another case carried a *TBK1* duplication. No controls had duplications or deletions in these six genes. A single control had a duplication in the *MYOC* region. Deletions of *GALC* were observed in five cases and two controls.

**CONCLUSIONS.** The CNV analysis of a large set of cases and controls revealed the presence of rare CNVs in known POAG susceptibility genes. Our data suggest that these rare CNVs may contribute to POAG pathogenesis and merit functional evaluation.

**Keywords:** DNA copy number variants, POAG, genetics, *SIX6*, *GAS7*

**G**laucoma is the second leading cause of irreversible blindness, affecting more than 60 million individuals worldwide, and it is considered to be a heterogeneous group of disorders.<sup>1-4</sup> Primary open-angle glaucoma (POAG) is the most common type and is inherited as a complex trait.<sup>2</sup> Clinically, POAG is characterized by progressive retinal ganglion cell death, optic nerve head excavation, and visual field loss.<sup>5,6</sup> Risk factors for POAG include increased age, elevated IOP, family history, and African ancestry.<sup>2,4,6</sup> Genetic factors have an important role in the pathogenesis of POAG. Family-based linkage studies have identified numerous genomic loci and several genes with varying contribution to POAG, including myocilin (*MYOC*), cytochrome P450 family 1 subfamily B polypeptide 1 (*CYP11B1*), optineurin (*OPTN*), TANK-binding kinase 1 (*TBKI*), and WD repeat domain 36 (*WDR36*).<sup>2,4,6-13</sup> Recently, genome-wide association studies (GWAS) of POAG in Iceland, Australia, Japan, and the United States have successfully identified and confirmed a number of genome-wide significant genetic associations in multiple genes, including caveolin 1/caveolin 2 (*CAV1/CAV2*), *CDKN2B* antisense RNA 1 (*CDKN2B-AS1*), transmembrane and coiled-coil domains 1 (*TMCO1*), SIX homeobox 1/SIX homeobox 6 (*SIX1/SIX6*), fibronectin type III domain containing 3B (*FNDC3B*), S1 RNA binding domain 1 (*SRBD1*), atonal homolog 7 (Drosophila) (*ATOH7*), and the chr8q22 region between zinc finger protein FOG family member 2 (*ZFPM2*), and low density lipoprotein receptor-related protein 12 (*LRP12*).<sup>14-27</sup> The IOP has been associated with variants in several genes, including *TMCO1*, ATP-binding cassette subfamily A (ABC1) member 1 (*ABCA1*) and growth arrest-specific 7 (*GAS7*).<sup>28,29</sup>

In addition, DNA copy number variants (i.e., genomic deletions and duplications) have been shown to have important roles in POAG.<sup>30-32</sup> Genomic deletions of galactosylceramidase (*GALC*) and duplications of *TBKI* have been reported to contribute to POAG pathogenesis.<sup>9,30,31,33,34</sup> A more comprehensive analysis of DNA deletions and duplications of known glaucoma-associated genes is needed to evaluate their possible contribution to the pathogenesis of POAG. To this end, we have studied DNA copy number variants in more than 1599 POAG cases and 1458 eye-examined controls, based on genotype data from the Illumina Human660W\_Quad BeadChip (Illumina, San Diego, CA, USA). Here, we report genomic deletions and duplications in a number of known glaucoma-associated genes and their relative contribution to POAG.

## MATERIALS AND METHODS

### Study Population

This study adhered to the tenets of the Declaration of Helsinki. Written informed consent was obtained from all study participants. We used POAG cases and controls from two separate glaucoma cohorts: the Glaucoma Genes and Environment (GLAUGEN) study (dbGaP Study Accession: phs000308.v1.p1, available in the public domain at <http://www.ncbi.nlm.nih.gov/gap>), which is part of the Gene, Environment Association Study consortium, and the National Eye Institute Glaucoma Human Genetics Collaboration (NEIGHBOR) study (dbGaP Study Accession: phs000238.v1.p1, available in the public domain at <http://www.ncbi.nlm.nih.gov/gap>). Both datasets have been described previously.<sup>20,22,35-42</sup> Briefly, the GLAUGEN study included 976 cases and 1140 controls from two population-based cohorts: the Nurses' Health Study (NHS) and the Health Professionals Follow-up Study (HPFS), as well as a clinic-based dataset, the Genetic Etiologies of POAG (GEP). The

Institutional Review boards of the Massachusetts Eye and Ear Infirmary, Harvard School of Public Health, and Brigham and Women's Hospital approved this study. The NEIGHBOR study consists of 2132 cases and 2290 controls from 12 sites. The institutional review boards of the University of Pittsburgh, Johns Hopkins University, Duke University, University of West Virginia, University of Miami, University of Michigan, Stanford University, Marshfield Clinic, and the University of California, San Diego approved the NEIGHBOR study.

Eligibility for POAG cases and controls has been described previously.<sup>20,35</sup> Briefly, POAG cases had reliable visual field tests showing characteristic visual field defects consistent with glaucomatous optic neuropathy. Elevation of IOP was not a criterion for inclusion. Patients with a diagnosis or history of a secondary glaucoma or ocular trauma were not considered as POAG cases. Trained glaucoma subspecialists reviewed the medical records for all POAG cases and controls to ensure they met inclusion criteria for the study. The examined control individuals were required to have normal optic nerves (cup-disc ratio  $\leq 0.6$ ) and normal IOP ( $\leq 21$  mm Hg).

### DNA Genotyping and DNA Copy Number Calling

All DNA samples were genotyped using the Illumina Human660W\_Quad\_v1 BeadChip at the Broad Institute (GLAUGEN), and the Center for Inherited Disease Research (CIDR) (NEIGHBOR).<sup>20,35</sup> To minimize batch effects, DNA samples were organized for equal representation of POAG cases and controls per 96-well plate from each study site. The details for DNA collection, extraction and plating, genotype calling, single nucleotide polymorphism (SNP) quality control, and the preliminary analyses in GLAUGEN and NEIGHBOR have been described previously.<sup>20,35</sup> After quality control, Illumina's GenomeStudio software was used to generate genotype calls, Log R ratio (LRR), and B allele frequency (BAF) using our established procedure.<sup>31</sup> To have a uniform comparison between cases and controls, we removed DNA samples that were whole genome amplified in vitro or were derived from buccal cells or nonblood samples due to their inconsistent copy number variance (CNV) performance compared to blood DNA sample.<sup>43</sup> Based on our previous experience in CNV analysis,<sup>31</sup> we selected PennCNV software (available in the public domain at [www.openbioinformatics.org](http://www.openbioinformatics.org)) to call the CNVs.<sup>44,45</sup> PennCNV software combines multiple sources of information, including LRR and BAF at each SNP marker, the distance between neighboring SNPs, and the allele frequency of SNPs. We applied PennCNV to genotyping data generated from Illumina arrays. During the analysis, we further eliminated DNA samples with a SD of the mean LRR  $> 0.4$  or with SD of the mean BAF  $> 0.1$ . We also removed DNA samples for which the total number of CNVs was 2 SDs higher than the mean number of CNVs across the entire dataset. After applying these rigorous quality control measures, 1156 POAG cases and 1079 controls from the NEIGHBOR dataset and 443 POAG cases and 379 controls from the GLAUGEN dataset remained for further analysis. To reduce false positives, we also required the CNVs to be at least 5 kilobases (kb) in size and interrogated by a minimum of five consecutive genotyping probes. We restricted our analysis to genomic regions containing glaucoma-associated genes, including *MYOC*, *OPTN*, *WDR36*, *CYP11B1*, *CDKN2B-AS1*, *TMCO1*, *SIX1/SIX6*, *CAV1/CAV2*, *SRBD1*, and the intergenic chr8q22 *LRP12-ZFPM2* region.

## RESULTS

The demographic characteristics of the NEIGHBOR and GLAUGEN participants included in the study are listed in

**TABLE 1.** Demographics of POAG Cases and Controls in the NEIGHBOR (1156 Cases and 1079 Controls) and GLAUGEN Datasets (443 Cases and 379 Controls)

	NEIGHBOR, <i>n</i> = 2235			GLAUGEN, <i>n</i> = 822		
	% Female	Mean Age ± SD	Family History of POAG, %	% Female	Mean Age ± SD	Family History of POAG, %
POAG Case	50.7	58.0 ± 12.7	40.4	56.9	65.3 ± 8.3	52.8
Control	60.4	68.0 ± 11.4	8.0	52.0	64.6 ± 9.5	12.1

Table 1. In the NEIGHBOR study, the mean age was 58.0 ± 12.7 years for the cases and 68.0 ± 11.4 for the controls. Similar proportions of female individuals were observed in cases (50.7%) and controls (60.4%). Approximately 40.4% of POAG cases and 8% of controls had a family history of glaucoma in first-degree relatives (i.e., biological parents, siblings, or children). The average number of CNVs (deletions and duplications) in NEIGHBOR was 104 for POAG cases and 103 for the controls. The average size of each CNV was approximately 32 kb for POAG cases and 31 kb for controls. For GLAUGEN samples, the mean age was 65.3 ± 8.3 years for the cases and 64.6 ± 9.5 years for the controls. The proportion of female individuals was similar between cases (56.9%) and controls (52.0%). Of the POAG cases and controls, 52.8% and 12.1%, respectively, had a family history of glaucoma in their first-degree relatives. The average number of CNVs in GLAUGEN was 150 for POAG cases and 163 for the controls. The average size of each CNV in GLAUGEN was approximately 66 kb for POAG cases and 66 kb for the controls.

We examined the genomic deletions and duplications in known POAG-associated genes, including *CAV1/CAV2*, *CDKN2B-AS1*, *TMCO1*, *SIX1/SIX6*, *FNDC3B*, *SRBD1*, chr8q22 region (*LRP12-ZFPF2*), *GAS7*, *CYP1B1*, *OPTN*, *MYOC*, *WDR36*, *TBK1*, *GALC*, and *ATOH7* (Table 2). No deletions or duplications were detected in the *CAV1/CAV2*, *CYP1B1*, or *OPTN* genomic regions in our cohorts. As shown in the Figure, we identified one case with a genomic duplication that spans

the *CDKN2B* gene and an intronic region of *CDKN2B-AS1* as well as another case with a duplication that spans a majority of the *TMCO1* genomic region. Both cases with these duplications were diagnosed in their late 40s with elevated IOPs (>21 mm Hg) and a large vertical cup-to-disc ratio (vCDR) of 0.9 in both eyes. Additionally, in both cases, there was a history of glaucoma in first-degree relatives. A genomic deletion spanning the *SLX6* gene and the 5'-end of *CI4ORF39* gene was identified in one POAG case. This patient had an elevated IOP (>21 mm Hg) and a large vCDR (0.8 in the affected eye) with a positive family history of glaucoma in the first-degree relatives. Two POAG cases with elevated IOPs (>21 mm Hg) carried duplications that span *MYH13*, *MYH8*, *MYH4*, *MYH1*, and the 5' end or upstream of the *GAS7* gene, which overlaps with the genomic region associated with IOP.<sup>28,46</sup> One of these patients had a family history of glaucoma, while the other did not. One POAG case carried a 184 kb *TBK1* deletion and another case carried an 886 kb *TBK1* duplication, which are CNVs of novel extent. These cases had normal tension glaucoma without a documented history of elevated IOPs (<21 mm Hg). Deletions in the *GALC* region were found in two controls (one with family history of glaucoma and another without family history) and five POAG cases all of which had elevated IOP (>21 mm Hg) and a positive family history of glaucoma. Deletions of the chr8q22 region (*LRP12-ZFPF2*) were identified in three cases and two controls (one with and another without family history of glaucoma). Duplications and

**TABLE 2.** Number of Individuals With DNA Copy Number Variants Within Known POAG-Associated Genes in NEIGHBOR (1156 Cases and 1079 Controls) and GLAUGEN (443 Cases and 379 Controls) Datasets

	NEIGHBOR				GLAUGEN				Total Combined			
	Genomic Deletion		Genomic Duplication		Genomic Deletion		Genomic Duplication		Deletion		Duplication	
	Case	Control	Case	Control	Case	Control	Case	Control	Case	Control	Case	Control
<i>CAV1/CAV2</i>	0	0	0	0	0	0	0	0	0	0	0	0
<i>CDKN2B-AS1</i>	0	0	1	0	0	0	0	0	0	0	1	0
<i>TMCO1</i>	0	0	1	0	0	0	0	0	0	0	1	0
<i>SIX1/SIX6</i>	1	0	0	0	0	0	0	0	1	0	0	0
<i>FNDC3B</i>	3	7	0	0	9	7	0	0	12	14	0	0
<i>SRBD1</i>	6	5	0	0	3	3	14	7	9	8	14	7
<i>LRP12-ZFPF2</i>	2	2	0	0	1	0	0	0	3	2	0	0
<i>GAS7</i>	0	0	1	0	0	0	1	0	0	0	2	0
<i>CYP1B1</i>	0	0	0	0	0	0	0	0	0	0	0	0
<i>OPTN</i>	0	0	0	0	0	0	0	0	0	0	0	0
<i>MYOC</i>	0	0	0	0	0	0	0	1	0	0	0	1
<i>WDR36</i>	0	1	5	3	0	1	3	2	0	2	8	5
<i>TBK1</i>	1	0	1	0	0	0	0	0	1	0	1	0
<i>GALC</i>	4	1	0	0	1	1	0	0	5	2	0	0
<i>ATOH7</i>	0	0	0	0	1	0	0	0	1	0	0	0

*CAV1/CAV2*, caveolin 1/caveolin 2; *CDKN2B-AS1*, CDKN2B antisense RNA 1; *TMCO1*, transmembrane and coiled-coil domains 1; *SIX1/SIX6*, SIX homeobox 1/SIX homeobox 6; *FNDC3B*, fibronectin type III domain containing 3B; *LRP12-ZFPF2*, low density lipoprotein receptor-related protein 12-zinc finger protein FOG family member 2; *GAS7*, growth arrest-specific 7; *CYP1B1*, cytochrome P450 family 1 subfamily B polypeptide 1; *OPTN*: optineurin; *MYOC*, myocilin; *WDR36*, WD repeat domain 36; *TBK1*, TANK-binding kinase 1; *GALC*, galactosylceramidase; *ATOH7*, atonal homolog 7 (*Drosophila*).

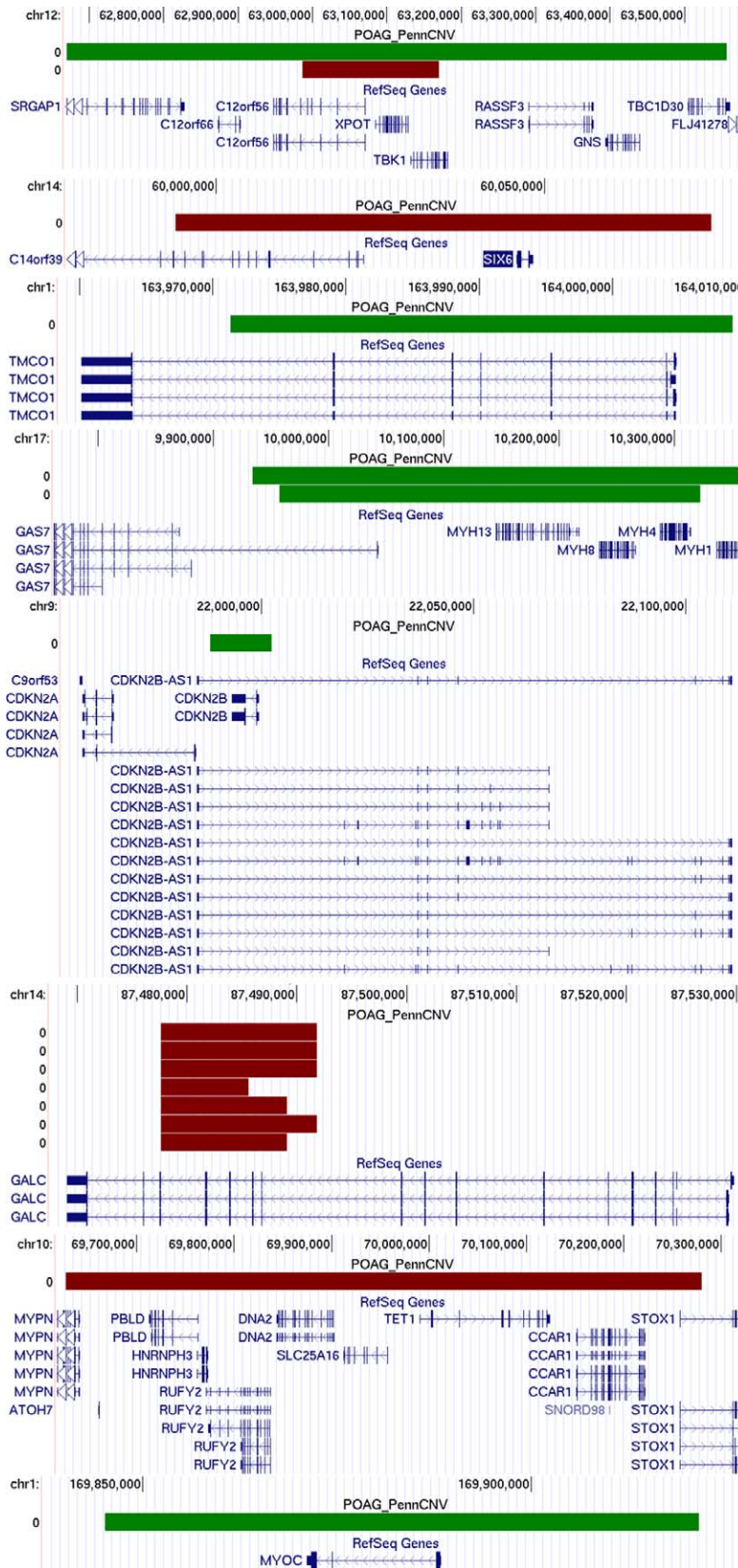


FIGURE. Representation of rare genetic duplications and deletions in known glaucoma-associated genes in UCSC human genome browser. *Green* represents genomic duplication and *red* represents genomic deletion. The boundary of these deletions and duplications is indicated by the *edge* of these bars.

deletions in the regions of *FNDC3B*, *SRBD1*, and *WDR36*, were equally distributed among POAG cases and controls (Table 2). A deletion in the *ATOH7* region was found in one POAG case. This case, with a cup-disc ratio of 0.6 in the left eye and 0.4 in the right eye, had an elevated IOP (>21 mm Hg), reproducible visual field loss, and a positive family history of glaucoma. A duplication in the *MYOC* region was identified in one control without a family history of glaucoma.

## DISCUSSION

To our knowledge, our study is the largest case-control analysis of CNVs in POAG, including over 3000 participants, and focusing on known POAG-associated genes. We identified a number of rare CNVs in known glaucoma genes, including *CDKN2B-AS1*, *TMCO1*, *SIX1/SIX6*, *GAS7*, *TBK1*, *GALC*, and *ATOH7*. Many CNVs were observed only in POAG patients. However, we also found that the CNVs in three genomic regions (*WDR36*, *FNDC3B*, and *SRBD1*) were relatively common with a frequency greater than 1% in our study. However, the frequencies were not significantly different between POAG cases and controls. The frequencies of these CNVs have not been reported previously to our knowledge.

Genomic duplications of *TBK1* have been specifically associated with POAG in normal tension glaucoma patients.<sup>9,33,34</sup> We also identified a genomic duplication of novel extent that spans *TBK1* in a POAG case with normal pressure. Our finding provided further support for the genetic contribution of *TBK1* duplication in normal tension glaucoma (NTG) pathogenesis. Additionally, for the first time we have identified a genomic deletion of *TBK1* in an NTG patient. These results suggested that duplication and deletion of *TBK1* contribute to glaucoma. The *TBK1* gene encodes a kinase that phosphorylates optineurin, which also is known to cause NTG.<sup>10,47,48</sup> Both *TBK1* and *OPTN* participate in autophagy and NF- $\kappa$ B signaling,<sup>4,8,49</sup> suggesting that *TBK1* CNVs may cause disease by dysregulating these pathways. However, further work is necessary to determine the responsible molecular events.

Variants in *TMCO1* and *GAS7* genes recently have been associated with IOP and POAG.<sup>28,29,50,51</sup> However, it remains unclear how the protein products from these two genes regulate IOP and affect POAG development. Mutations in *TMCO1* have been associated with craniofacial dysmorphism, skeletal anomalies, mental retardation (OMIM #614123) and cerebro-facio-thoracic dysplasia (OMIM #614132).<sup>52-55</sup> Ocular phenotypes, including IOP elevation or glaucoma, have not been reported previously in patients carrying *TMCO1* mutations.<sup>52-54</sup> However, most of these patients, aged from 3 to 39 years, have macrocephaly, fusion of cervical or thoracic spine, and prominent cerebrospinal fluid (CSF) space,<sup>54</sup> which might affect CSF pressure. Decreased CSF pressure has been proposed as a risk factor for glaucoma by increasing the translamellar pressure difference.<sup>56-58</sup> The *GAS7* gene, as part of the growth arrest-specific gene family, is involved in neurite outgrowth and motor neuron function associated with muscle strength maintenance.<sup>59,60</sup> The *GAS7* regulates the expression of *RUNX2* and its dependent transcriptional expression. Mutations in *GAS7* increase body fat levels and decrease bone density in mouse models.<sup>61</sup> Although variants in the *GAS7* genomic region have been associated with IOP level and POAG risk,<sup>28,62</sup> the mechanism remains unknown. In addition, ocular phenotypes, including altered IOP, have not been described in the *GAS7*-deficient mouse.<sup>59</sup> The presence of duplications of *GAS7* overlapping with IOP-associated regions in two glaucoma patients, but not controls, supports the potential involvement of *GAS7* in POAG. However, this does not exclude the possible role of other genes contained within the duplicated region.

We also identified a rare duplication of *CDKN2B/CDKN2B-AS1* in a POAG case. Variants in this genomic region have been associated with POAG, especially with normal-tension glaucoma and advanced glaucoma.<sup>16,17,20,50,63</sup> Elevated levels of *CDKN2B-AS1*<sup>64</sup> suppress the expression of cell cycle regulators *CDKN2A* and *CDKN2B*. Thus, duplication of *CDKN2B-AS1* intronic region might increase risk of POAG by elevating gene expression to suppress the expression of *CDKN2A* and *CDKN2B*. Of course the actual mechanism remains unknown at this time. Recently, two groups reported that *SIX6* is the gene associated with POAG in the *SIX1/SIX6* genomic region.<sup>38,65</sup> We identified a heterozygous deletion in the *SIX6* region. The homozygous loss of *SIX6* function in human patients, including homozygous deletion of a large genomic region containing *SIX6* gene, has been reported to be associated with variable degrees of retinal hypoplasia, absence of the optic chiasm and optic nerve, and bilateral anophthalmia.<sup>66-68</sup> However, the individual we have identified with a heterozygous deletion in *SIX6* has a much less severe phenotype. It has been proposed that the level of *SIX6* expression is associated with POAG although the exact mechanism remains unknown.<sup>38,65</sup> Deletions of the *GALC* genomic region also have been associated with POAG risk.<sup>31</sup> In this study we identified more *GALC* deletions in cases compared to controls. Although the distribution of deletions between cases and controls was not significantly different, it provides further support on the potential contribution of this gene to POAG.<sup>4</sup> Variants in *ATOH7* have been associated with optic disc size and vertical cup-to-disc ratio<sup>14,69,70</sup> as well as POAG.<sup>16,25,71</sup> The *ATOH7* knockout mouse lacks retinal ganglion cells and optic nerves.<sup>72</sup> Deletion of a remote enhancer of *ATOH7* disrupts retinal neurogenesis and causes nonsyndromic congenital retinal nonattachment.<sup>73</sup> Homozygous *ATOH7* mutations were reported in patients with global eye developmental defects, including microphthalmia.<sup>74</sup> The POAG case with a heterozygous deletion of *ATOH7* represents an intermediate phenotype, suggesting the dosage effect of *ATOH7*. This is the first report of *ATOH7* deletion in a POAG patient.

We acknowledge that this study had several limitations. First, the detection of CNVs in our samples was based on an Illumina SNP-genotyping array and computational algorithm. Even though this array was designed with the ability to detect CNVs, there are nonetheless limitations to the number of SNP/CNV probes and their ability to detect CNVs. Second, our study focused on genes and loci that have a known or suspected association with POAG and, as such, does not provide information on novel associations, which would have been unlikely due to the uncommon occurrence of CNVs in general. Due to the small number of CNVs in cases and controls, the statistically significant association could not be demonstrated. The frequency of these CNVs in these known glaucoma genes have not yet been reported. This study was designed to lend support to known genes and examine the potential role of gene dosage mechanisms in POAG. Recently, three new studies identified several new genes associated with POAG.<sup>26,27,29</sup> However, these results were not available in time to be included in our analysis. Third, these CNVs have not been confirmed by other technologies, such as comparative genomic hybridization array or probe-based real time PCR. Fourth, in this set of unrelated cases and controls, we are not able to demonstrate that interesting CNVs associated with POAG exhibited familial segregation.

In summary, we reported the analysis of DNA copy number variants of known glaucoma-associated genes in two large POAG case-control sets—NEIGHBOR and GLAUGEN. We identified DNA duplications or deletions in the *CDKN2B-AS1*, *TMCO1*, *SIX1/SIX6*, *GAS7*, *ATOH7*, *TBK1*, and *GALC* genomic

regions in POAG cases. These data suggested that rare CNVs in known glaucoma-associated genes may contribute to POAG pathogenesis potentially through gene dosage effects, and merit further analysis and functional evaluation.

### Acknowledgments

The authors thank all the study participants, without whom this work would not have been possible. The authors thank Hemin Chin, PhD, for institutional support, the Center for Inherited Disease Research, where genotyping services for the NEIGHBOR study were provided, and Cynthia Grosskreutz, Teresa Chen, Doug Rhee, A. Tim Johnson, Judie F. Charlton, Katy Downs, and the Collaborative Initial Glaucoma Treatment Study (CIGTS) investigators and Advanced Glaucoma Intervention Study (AGIS) investigators who helped identify patients and controls for these studies. A full listing of collaborators for GLAUGEN can be found in dbGap at The Primary Open-Angle Glaucoma Genes and Environment (GLAUGEN) Study. Study Accession: phs000308.v1.p1. <http://www.ncbi.nlm.nih.gov/projects/gap>. December 21, 2010.

Supported by The Harvard Glaucoma Center of Excellence and Margolis fund (Boston, MA, USA; LRP and JLW); Research to Prevent Blindness, Inc. (New York, NY, USA; LRP, JER and JLW); The Arthur Ashley Foundation (LRP); The Glaucoma Research Foundation (San Francisco, CA, USA), Bright Focus Foundation (formerly called American Health Assistance Foundation, Clarksburg, MD, USA), the Glaucoma Foundation (New York, NY USA), and National Eye Institute Grant R01EY023242 (YL). The NEIGHBORHOOD consortium is supported by National Institutes of Health/National Eye Institute (NIH/NEI; Bethesda, MD, USA) Grant R01EY022305. The maintenance of the Nurses' Health Study and Health Professionals Follow-up was supported by NIH Grants CA87969, CA49449, UM1 CA167552, and HL35464, allowing these health professionals to contribute to this analysis. The following grants from the National Human Genome Research Institute (Bethesda, MD, USA) supported GLAUGEN: HG004728 (LRP), HG004424 (Broad Institute to support genotyping), and HG004446 (Cathy C. Laurie, University of Washington, Seattle, WA, USA, to support genotype data cleaning and analysis). Genotyping services for the NEIGHBOR study were provided by the Center for Inherited Disease Research (CIDR) and were supported by the National Eye Institute through Grant HG005259-01 (JLW). In addition, CIDR is funded through a federal contract number HHSN268200782096C from the NIH to The Johns Hopkins University. The NEI, through American Recovery and Reinvestment Act (ARRA) Grants EY015872 (JLW) and EY019126 (MAH), supported the collection and processing of samples for the NEIGHBOR dataset. Funding for the collection of cases and controls was provided by NIH Grants EY015543 (RRA), EY006827 (DG), HL073389 (Elizabeth R. Hauser), P30-EY005722, EY13315 (MAH), EY09611 (Susan E. Hankinson), EY015473 (LRP), EY009149 (PRL), HG004608 (CAM), EY008208 (Felipe A. Medeiros), EY015473 (LRP), EY012118 (MAP-V), EY015682 (TR), EY011671 (JER), EY09580 (JER), EY023512 (JHF), EY013178 (JSS), EY015872 (JLW), EY010886 (JLW), EY009847 (JLW), EY011008 (Linda M. Zangwill), EY144428 (KZ), EY144448 (KZ), and EY18660 (KZ). Supported in part by NIH Grant T32EY021453 (BLX, JNCB).

Disclosure: **Y. Liu**, None; **M.E. Garrett**, None; **B.L. Yaspan**, None; **J.C. Bailey**, None; **S.J. Loomis**, None; **M. Brilliant**, None; **D.L. Budenz**, None; **W.G. Christen**, None; **J.H. Fingert**, None; **D. Gaasterland**, None; **T. Gaasterland**, None; **J.H. Kang**, None; **R.K. Lee**, None; **P. Lichter**, None; **S.E. Moroi**, None; **A. Realini**, None; **J.E. Richards**, None; **J.S. Schuman**, None; **W.K. Scott**, None; **K. Singh**, None; **A.J. Sit**, None; **D. Vollrath**, None; **R. Weinreb**, None; **G. Wollstein**, None; **D.J. Zack**, None; **K. Zhang**, None; **M.A. Pericak-Vance**, None; **J.L. Haines**, None; **L.R. Pasquale**, None; **J.L. Wiggs**, None; **R.R. Allingham**, None; **A.E. Ashley-Koch**, None; **M.A. Hauser**, None

### References

1. Tham YC, Li X, Wong TY, Quigley HA, Aung T, Cheng CY. Global prevalence of glaucoma and projections of glaucoma burden through 2040: a systematic review and meta-analysis. *Opthalmology*. 2014;121:2081-2090.
2. Allingham RR, Liu Y, Rhee DJ. The genetics of primary open-angle glaucoma: a review. *Exp Eye Res*. 2009;88:837-844.
3. Liu Y, Allingham RR. Genetics of glaucoma. *Encyclopedia of Life Sciences (ELS)*. Chichester, UK: John Wiley & Sons Ltd; 2010.
4. Liu Y, Allingham RR. Molecular genetics in glaucoma. *Exp Eye Res*. 2011;93:331-339.
5. Allingham RR, Shields MB. *Shields' Textbook of Glaucoma*. 6th ed. Philadelphia, PA: Wolters Kluwer/Lippincott Williams & Wilkins Health; 2011.
6. Fan BJ, Wiggs JL. Glaucoma: genes, phenotypes, and new directions for therapy. *J Clin Invest*. 2010;120:3064-3072.
7. Fan BJ, Wang DY, Lam DS, Pang CP. Gene mapping for primary open angle glaucoma. *Clin Biochem*. 2006;39:249-258.
8. Fingert JH. Primary open-angle glaucoma genes. *Eye (Lond)*. 2011;25:587-595.
9. Fingert JH, Robin AL, Stone JL, et al. Copy number variations on chromosome 12q14 in patients with normal tension glaucoma. *Hum Mol Genet*. 2011;20:2482-2494.
10. Rezaie T, Child A, Hitchings R, et al. Adult-onset primary open-angle glaucoma caused by mutations in optineurin. *Science*. 2002;295:1077-1079.
11. Monemi S, Spaeth G, DaSilva A, et al. Identification of a novel adult-onset primary open-angle glaucoma (POAG) gene on 5q22.1. *Hum Mol Genet*. 2005;14:725-733.
12. Stoilov I, Akarsu AN, Sarfarazi M. Identification of three different truncating mutations in cytochrome P4501B1 (CYP1B1) as the principal cause of primary congenital glaucoma (Buphthalmos) in families linked to the GLC3A locus on chromosome 2p21. *Hum Mol Genet*. 1997;6:641-647.
13. Pasutto F, Chavarria-Soley G, Mardin CY, et al. Heterozygous loss-of-function variants in CYP1B1 predispose to primary open-angle glaucoma. *Invest Ophthalmol Vis Sci*. 2010;51:249-254.
14. Khor CC, Ramdas WD, Vithana EN, et al. Genome-wide association studies in Asians confirm the involvement of ATOH7 and TGFBR3, and further identify CARD10 as a novel locus influencing optic disc area. *Hum Mol Genet*. 2011;20:1864-1872.
15. Ramdas WD, van Koolwijk LM, Ikram MK, et al. A genome-wide association study of optic disc parameters. *PLoS Genet*. 2010;6:e1000978.
16. Fan BJ, Wang DY, Pasquale LR, Haines JL, Wiggs JL. Genetic variants associated with optic nerve vertical cup-to-disc ratio are risk factors for primary open angle glaucoma in a US Caucasian population. *Invest Ophthalmol Vis Sci*. 2011;52:1788-1792.
17. Burdon KP, Crawford A, Casson RJ, et al. Glaucoma risk alleles at CDKN2B-AS1 are associated with lower intraocular pressure, normal-tension glaucoma, and advanced glaucoma. *Opthalmology*. 2012;119:1539-1545.
18. Cao D, Jiao X, Liu X, et al. CDKN2B polymorphism is associated with primary open-angle glaucoma (POAG) in the Afro-Caribbean population of Barbados, West Indies. *PLoS One*. 2012;7:e39278.
19. Wiggs JL, Kang JH, Yaspan BL, et al. Common variants near CAV1 and CAV2 are associated with primary open-angle glaucoma in Caucasians from the USA. *Hum Mol Genet*. 2011;20:4707-4713.

20. Wiggs JL, Yaspan BL, Hauser MA, et al. Common variants at 9p21 and 8q22 are associated with increased susceptibility to optic nerve degeneration in glaucoma. *PLoS Genet.* 2012;8:e1002654.
21. Thorleifsson G, Walters GB, Hewitt AW, et al. Common variants near CAV1 and CAV2 are associated with primary open-angle glaucoma. *Nat Genet.* 2010;42:906-909.
22. Lu Y, Vitart V, Burdon KP, et al. Genome-wide association analyses identify multiple loci associated with central corneal thickness and keratoconus. *Nat Genet.* 2013;45:155-163.
23. Meguro A, Inoko H, Ota M, Mizuki N, Bahram S. Genome-wide association study of normal tension glaucoma: common variants in SRBD1 and ELOVL5 contribute to disease susceptibility. *Ophthalmology.* 2010;117:1331-1338.
24. Liu Y, Hauser MA, Akafo SK, et al. Investigation of known genetic risk factors for primary open angle glaucoma in two populations of African ancestry. *Invest Ophthalmol Vis Sci.* 2013;54:6248-6254.
25. Ramdas WD, van Koolwijk LM, Lemij HG, et al. Common genetic variants associated with open-angle glaucoma. *Hum Mol Genet.* 2011;20:2464-2471.
26. Gharahkhani P, Burdon KP, Fogarty R, et al. Common variants near ABCA1, AFAP1 and GMD5 confer risk of primary open-angle glaucoma. *Nat Genet.* 2014;46:1120-1125.
27. Chen Y, Lin Y, Vithana EN, et al. Common variants near ABCA1 and in PMM2 are associated with primary open-angle glaucoma. *Nat Genet.* 2014;46:1115-1119.
28. van Koolwijk LM, Ramdas WD, Ikram MK, et al. Common genetic determinants of intraocular pressure and primary open-angle glaucoma. *PLoS Genet.* 2012;8:e1002611.
29. Hysi PG, Cheng CY, Springelkamp H, et al. Genome-wide analysis of multi-ancestry cohorts identifies new loci influencing intraocular pressure and susceptibility to glaucoma. *Nat Genet.* 2014;46:1126-1130.
30. Davis LK, Meyer KJ, Schindler EI, et al. Copy number variations and primary open-angle glaucoma. *Invest Ophthalmol Vis Sci.* 2011;52:7122-7133.
31. Liu Y, Gibson J, Wheeler J, et al. GALC deletions increase the risk of primary open-angle glaucoma: the role of Mendelian variants in complex disease. *PLoS One.* 2011;6:e27134.
32. Liu Y, Whigham BT, Wheeler J, et al. The role of lysyl oxidase-like 1 DNA copy number variants in exfoliation glaucoma. *Mol Vis.* 2012;18:2976-2981.
33. Kawase K, Allingham RR, Meguro A, et al. Confirmation of TBK1 duplication in normal tension glaucoma. *Exp Eye Res.* 2012;96:178-180.
34. Ritch R, Darbro B, Menon G, et al. TBK1 gene duplication and normal-tension glaucoma. *JAMA Ophthalmol.* 2014;132:544-548.
35. Wiggs JL, Hauser MA, Abdrabou W, et al. The NEIGHBOR consortium primary open-angle glaucoma genome-wide association study: rationale, study design, and clinical variables. *J Glaucoma.* 2012;22:517-525.
36. Cornelis MC, Agrawal A, Cole JW, et al. The Gene, Environment Association Studies consortium (GENEVA): maximizing the knowledge obtained from GWAS by collaboration across studies of multiple conditions. *Genet Epidemiol.* 2010;34:364-372.
37. Loomis SJ, Kang JH, Weinreb RN, et al. Association of CAV1/CAV2 genomic variants with primary open-angle glaucoma overall and by gender and pattern of visual field loss. *Ophthalmology.* 2014;121:508-516.
38. Carnes MU, Liu YP, Allingham RR, et al. Discovery and functional annotation of SIX6 variants in primary open-angle glaucoma. *PLoS Genet.* 2014;10:e1004372.
39. Ulmer M, Li J, Yaspan BL, et al. Genome-wide analysis of central corneal thickness in primary open-angle glaucoma cases in the NEIGHBOR and GLAUGEN consortia. *Invest Ophthalmol Vis Sci.* 2012;53:4468-4474.
40. Bailey JN, Yaspan BL, Pasquale LR, et al. Hypothesis-independent pathway analysis implicates GABA and Acetyl-CoA metabolism in primary open-angle glaucoma and normal-pressure glaucoma. *Hum Genet.* 2014;133:1319-1330.
41. Pasquale LR, Loomis SJ, Weinreb RN, et al. Estrogen pathway polymorphisms in relation to primary open angle glaucoma: an analysis accounting for gender from the United States. *Mol Vis.* 2013;19:1471-1481.
42. Ozel AB, Moroi SE, Reed DM, et al. Genome-wide association study and meta-analysis of intraocular pressure. *Hum Genet.* 2014;133:41-57.
43. Sun F, Reichenberger EJ. Saliva as a source of genomic DNA for genetic studies: review of current methods and applications. *Oral Health Dent Manag.* 2014;13:217-222.
44. Dellinger AE, Saw SM, Goh LK, Scielstad M, Young TL, Li YJ. Comparative analyses of seven algorithms for copy number variant identification from single nucleotide polymorphism arrays. *Nucleic Acids Res.* 2010;38:e105.
45. Wang K, Li M, Hadley D, et al. PennCNV: an integrated hidden Markov model designed for high-resolution copy number variation detection in whole-genome SNP genotyping data. *Genome Res.* 2007;17:1665-1674.
46. Gharahkhani P, Burdon KP, Fogarty R, et al. Common variants near ABCA1, AFAP1 and GMD5 confer risk of primary open-angle glaucoma. *Nat Genet.* 2014;46:1120-1125.
47. Morton S, Hesson L, Peggie M, Cohen P. Enhanced binding of TBK1 by an optineurin mutant that causes a familial form of primary open angle glaucoma. *FEBS Lett.* 2008;582:997-1002.
48. Park BC, Shen X, Samaraweera M, Yue BY. Studies of optineurin, a glaucoma gene: Golgi fragmentation and cell death from overexpression of wild-type and mutant optineurin in two ocular cell types. *Am J Pathol.* 2006;169:1976-1989.
49. Weidberg H, Elazar Z. TBK1 mediates crosstalk between the innate immune response and autophagy. *Sci Signal.* 2011;4:pe39.
50. Burdon KP, Macgregor S, Hewitt AW, et al. Genome-wide association study identifies susceptibility loci for open angle glaucoma at TMCO1 and CDKN2B-AS1. *Nat Genet.* 2011;43:574-578.
51. Sharma S, Burdon KP, Chidlow G, et al. Association of genetic variants in the TMCO1 gene with clinical parameters related to glaucoma and characterization of the protein in the eye. *Invest Ophthalmol Vis Sci.* 2012;53:4917-4925.
52. Alanay Y, Erguner B, Utine E, et al. TMCO1 deficiency causes autosomal recessive cerebropathic dysplasia. *Am J Med Genet A.* 2014;164A:291-304.
53. Caglayan AO, Per H, Akgumus G, et al. Whole-exome sequencing identified a patient with TMCO1 defect syndrome and expands the phenotypic spectrum. *Clin Genet.* 2013;84:394-395.
54. Xin B, Puffenberger EG, Turben S, Tan H, Zhou A, Wang H. Homozygous frameshift mutation in TMCO1 causes a syndrome with craniofacial dysmorphism, skeletal anomalies, and mental retardation. *Proc Natl Acad Sci U S A.* 2010;107:258-263.
55. Pehlivan D, Karaca E, Aydin H, et al. Whole-exome sequencing links TMCO1 defect syndrome with cerebro-facio-thoracic dysplasia. *Eur J Hum Genet.* 2014;22:1145-1148.
56. Fleischman D, Allingham RR. The role of cerebrospinal fluid pressure in glaucoma and other ophthalmic diseases: A review. *Saudi J Ophthalmol.* 2013;27:97-106.
57. Jonas JB, Wang N. Cerebrospinal fluid pressure and glaucoma. *J Ophthalmic Vis Res.* 2013;8:257-263.
58. Wang N, Yang D, Jonas JB. Low cerebrospinal fluid pressure in the pathogenesis of primary open-angle glaucoma: epiphe-

- nomenon or causal relationship? The Beijing Intracranial and Intraocular Pressure (iCOP) study. *J Glaucoma*. 2013;22(suppl 5):S11-S12.
59. Huang BT, Chang PY, Su CH, Chao CC, Lin-Chao S. Gas7-deficient mouse reveals roles in motor function and muscle fiber composition during aging. *PLoS One*. 2012;7:e37702.
  60. You JJ, Lin-Chao S. Gas7 functions with N-WASP to regulate the neurite outgrowth of hippocampal neurons. *J Biol Chem*. 2010;285:11652-11666.
  61. Chao CC, Hung FC, Chao JJ. Gas7 is required for mesenchymal stem cell-derived bone development. *Stem Cells Int*. 2013; 2013:137010.
  62. Nag A, Venturini C, Small KS, et al. A genome-wide association study of intra-ocular pressure suggests a novel association in the gene FAM125B in the TwinsUK cohort. *Hum Mol Genet*. 2014;23:3343-3348.
  63. Pasquale LR, Loomis SJ, Kang JH, et al. CDKN2B-AS1 genotype-glaucoma feature correlations in primary open-angle glaucoma patients from the United States. *Am J Ophthalmol*. 2013;155: 342-353.
  64. Wan G, Mathur R, Hu X, et al. Long non-coding RNA ANRIL (CDKN2B-AS) is induced by the ATM-E2F1 signaling pathway. *Cell Signal*. 2013;25:1086-1095.
  65. Iglesias AI, Springelkamp H, van der Linde H, et al. Exome sequencing and functional analyses suggest that SIX6 is a gene involved in an altered proliferation-differentiation balance early in life and optic nerve degeneration at old age. *Hum Mol Genet*. 2014;23:1320-1332.
  66. Li X, Perissi V, Liu F, Rose DW, Rosenfeld MG. Tissue-specific regulation of retinal and pituitary precursor cell proliferation. *Science*. 2002;297:1180-1183.
  67. Gallardo ME, Lopez-Rios J, Fernaud-Espinosa I, et al. Genomic cloning and characterization of the human homeobox gene SIX6 reveals a cluster of SIX genes in chromosome 14 and associates SIX6 hemizyosity with bilateral anophthalmia and pituitary anomalies. *Genomics*. 1999;61:82-91.
  68. Elliott J, Maltby EL, Reynolds B. A case of deletion 14(q22.1->q22.3) associated with anophthalmia and pituitary abnormalities. *J Med Genet*. 1993;30:251-252.
  69. Macgregor S, Hewitt AW, Hysi PG, et al. Genome-wide association identifies ATOH7 as a major gene determining human optic disc size. *Hum Mol Genet*. 2010;19:2716-2724.
  70. Chen JH, Wang D, Huang C, et al. Interactive effects of ATOH7 and RFTN1 in association with adult-onset primary open-angle glaucoma. *Invest Ophthalmol Vis Sci*. 2012;53:779-785.
  71. Mabuchi F, Sakurada Y, Kashiwagi K, Yamagata Z, Iijima H, Tsukahara S. Association between genetic variants associated with vertical cup-to-disc ratio and phenotypic features of primary open-angle glaucoma. *Ophthalmology*. 2012;119: 1819-1825.
  72. Brown NL, Patel S, Brzezinski J, Glaser T. Math5 is required for retinal ganglion cell and optic nerve formation. *Development*. 2001;128:2497-2508.
  73. Ghiasvand NM, Rudolph DD, Mashayekhi M, Brzezinski JA, Goldman D, Glaser T. Deletion of a remote enhancer near ATOH7 disrupts retinal neurogenesis, causing NCRNA disease. *Nat Neurosci*. 2011;14:578-586.
  74. Khan K, Logan CV, McKibbin M, et al. Next generation sequencing identifies mutations in Atonal homolog 7 (ATOH7) in families with global eye developmental defects. *Hum Mol Genet*. 2012;21:776-783.