

# No Relation Between the Severity of Corneal Nerve, Epithelial, and Keratocyte Cell Morphology With Measures of Dry Eye Disease in Type 1 Diabetes

Maryam Ferdousi,<sup>1</sup> Ioannis N. Petropoulos,<sup>2</sup> Alise Kalteniece,<sup>1</sup> Shazli Azmi,<sup>1</sup> Georgios Ponirakis,<sup>2</sup> Nathan Efron,<sup>3</sup> Handrean Soran,<sup>1</sup> and Rayaz Ahmed Malik<sup>1,2</sup>

<sup>1</sup>Institute of Cardiovascular Sciences, Faculty of Biology, Medicine and Health, University of Manchester and NIHR/Wellcome Trust Clinical Research Facility, Manchester, United Kingdom

<sup>2</sup>Weill Cornell Medicine-Qatar, Research Division, Qatar Foundation, Education City, Doha, Qatar

<sup>3</sup>Institute of Health and Biomedical Innovation, Queensland University of Technology, Brisbane, Queensland, Australia

Correspondence: Rayaz Ahmed Malik, Weill Cornell Medicine-Qatar & University of Manchester School of Medicine, Institute of Cardiovascular Sciences, 46 Grafton Street, Core Technology Facility, Manchester M13 9NT, UK; ram2045@qatar-med.cornell.edu.

Submitted: July 20, 2018

Accepted: September 27, 2018

Citation: Ferdousi M, Petropoulos IN, Kalteniece A, et al. No relation between the severity of corneal nerve, epithelial, and keratocyte cell morphology with measures of dry eye disease in type 1 diabetes. *Invest Ophthalmol Vis Sci.* 2018;59:5525-5530. <https://doi.org/10.1167/iovs.18-25321>

**PURPOSE.** Patients with diabetes have a propensity to develop dry eye symptoms (DES), with reduced tear secretion and corneal sensitivity. The underlying pathologic basis of DES was explored in patients with Type 1 diabetes.

**METHODS.** Forty-two patients with Type 1 diabetes mellitus (T1DM) (age:  $49.21 \pm 2.53$  years, duration of diabetes:  $29.98 \pm 2.64$  years) and 25 control subjects (age:  $48.70 \pm 2.84$  years) underwent assessment of DES using a validated dry eye questionnaire, and tear stability and tear production were assessed using tear breakup time (TBUT) and Schirmer's test, respectively. Corneal confocal microscopy was undertaken to quantify corneal nerve fiber density (CNFD), branch density (CNBD), fiber length (CNFL), keratocyte density (KD), and corneal epithelial basal cell (CEBC) density and area.

**RESULTS.** The prevalence of DES was significantly higher ( $P = 0.03$ ), and TBUT ( $P = 0.006$ ), corneal sensation ( $P < 0.0001$ ), CNFD ( $P = 0.001$ ), CNBD ( $P = 0.001$ ), CNFL ( $P = 0.003$ ), and KD ( $P = 0.04$ ) were significantly lower in patients with T1DM compared to control subjects. However, these measures did not differ significantly between T1DM patients with and without dry eye. There was no correlation between DES and TBUT or corneal nerve keratocyte and CEBC morphology.

**CONCLUSIONS.** DES and TBUT are significantly increased in patients with T1DM, but are not related to corneal nerve, basal epithelial, or keratocyte cell morphology.

**Keywords:** dry eye, type 1 diabetes mellitus, corneal confocal microscopy, corneal epithelial basal cells, keratocytes, corneal nerves

The most common eye complication of diabetes is retinopathy; however, several additional complications including cataract, glaucoma, refractive alterations, and dry eye contribute to the morbidity of diabetic eye disease.<sup>1,2</sup> Indeed, dry eye has a reported prevalence of ~54.3% and is associated with an increased risk of epithelial defects and corneal ulcers in patients with diabetes.<sup>3-5</sup> Diabetic keratopathy can manifest as recurrent corneal erosions, ulceration, and delayed wound healing after surgery,<sup>6</sup> superficial punctate keratopathy, and neurotrophic keratitis.<sup>5,7</sup> Early manifestations of diabetic keratopathy include eye discomfort,<sup>8</sup> reduced corneal sensitivity,<sup>9</sup> and decreased tear stability<sup>9,10</sup> and secretion.<sup>11,12</sup> The International Dry Eye Workshop defined dry eye as a "multifactorial disease of the tears and ocular surface that result in symptoms of discomfort and visual disturbance and tear film instability with potential damage to the ocular surface and is accompanied by increased osmolality of the tear film and inflammation of the ocular surface."<sup>13</sup>

Multiple risk factors may predispose to dry eye symptoms (DES), with diabetes being a major risk factor.<sup>14</sup> While the exact underlying mechanisms for dry eye are unclear in diabetes, dry eye syndrome correlates with hemoglobin A1c (HbA1c) levels<sup>4</sup>

and may also be associated with peripheral neuropathy and abnormal tear secretion.<sup>15,16</sup> DES was diagnosed in 76.5% of subjects with diabetic neuropathy compared to 44.4% in subjects without diabetic neuropathy.<sup>8</sup> Some studies suggest that denervation of the lacrimal gland and the accessory palpebral gland may reduce tear film reflex secretion in diabetes.<sup>9,17</sup> Lacrimal gland innervation is derived from the ophthalmic branch of the trigeminal nerve, and stimulation of trigeminal nerve receptors in the cornea mediates activation of these glands.<sup>18</sup> Hence corneal nerve degeneration may lead to a reduction in corneal nerve sensitivity,<sup>19</sup> reduced reflex-induced lacrimal gland secretion, and dry eye.<sup>20</sup> A reduction in corneal sensitivity may also cause increased evaporation of tears due to a reduced blink rate.<sup>13</sup> These abnormalities may lead to a reduction in corneal epithelial cell densities and further contribute to a loss of corneal integrity in diabetes.<sup>21</sup>

Within the cornea, stromal keratocytes play an important role in maintaining corneal stability and transparency by releasing cytokines and growth factors<sup>22-24</sup> and also contribute to corneal nerve regeneration.<sup>25</sup> Studies have demonstrated abnormal hyperreflectivity of keratocytes in patients with Sjogren's syndrome and dry eye<sup>26,27</sup> and increased density of



activated keratocytes in patients with dry eye due to Graves' orbitopathy.<sup>28</sup> However, few studies have assessed keratocyte density (KD) and morphology in diabetic patients with dry eye.<sup>29,30</sup>

In vivo corneal confocal microscopy (IVCCM) demonstrates significant abnormalities in corneal nerve, epithelial, and endothelial cell morphology in patients with Type 2 diabetes.<sup>31</sup> Patients with dry eye, with and without primary Sjogren's syndrome, show a reduction in superficial epithelial cell density but no change in corneal subbasal and stromal nerve density or basal epithelial cell density.<sup>32</sup> In a recent study of 53 patients with Type 1 diabetes mellitus (T1DM), an abnormality in tear film stability, secretion, and lipid layer quality was related to corneal sensitivity and the severity of somatic neuropathy, but corneal structure was not evaluated.<sup>33</sup> In a larger study of 243 patients with Type 2 diabetes, dry eye was related to retinopathy, but not neuropathy, and corneal structure was not assessed.<sup>34</sup>

We have undertaken a detailed evaluation of DES in relation to tear function, corneal nerve, basal epithelial cell, and stromal keratocyte cell morphology in patients with T1DM.

## MATERIALS AND METHODS

### Study Subjects

This study was approved by the North Manchester Research Ethics Committee and adhered to the tenets of the Declaration of Helsinki. Forty-two participants with T1DM (age:  $49.21 \pm 2.53$  years) and 25 age-matched control subjects (age:  $48.70 \pm 2.84$  years) were studied. Informed written consent was obtained from all participants. Exclusion criteria included any cause of neuropathy other than diabetes, including malignancy, connective tissue or infectious disease, deficiency of vitamin B12 or folate, chronic renal failure, liver failure, and active diabetic foot ulceration. In addition, participants with Graves' disease, rheumatoid arthritis, or a history of wearing contact lenses, laser treatment, ocular trauma, or those who worked in a dusty environment were excluded. Patients and controls did not report the use of any medication to treat dry eye.

### Clinical and Ophthalmic Assessment

All participants underwent assessment of body mass index (BMI), HbA1c, lipid profile, and neuropathy using the neuropathy disability score (NDS). Dry eye symptoms were recorded and scored using question 7 of the Dry Eye Questionnaire (DEQ),<sup>35</sup> which includes five subquestions regarding the presence, severity, and frequency of DES (see Supplementary Fig. S1). In question 1, patients were asked about the five main symptoms of dry eyes, and in questions 2 to 5, they were asked about the intensity and frequency of these symptoms on a numeric rating scale ranging from 0 to 5, that is, from no to very intense symptoms. Dry eye was determined on the basis of a history of ocular discomfort, including a burning sensation, itchiness, gritty sensation, redness, and excessive tearing, based on the questionnaire. Patients with at least two out of six symptoms were considered to have dry eye.

All participants underwent general ocular surface and eyelid examination using slit-lamp biomicroscopy (Slit Lamp BC 900; Haag-Streit UK, Harlow, UK) to evaluate the presence of other ocular complications. Corneal sensitivity was assessed using a noncontact corneal aesthesiometer (NCCA) (Glasgow Caledonian University, Glasgow, Scotland, UK).<sup>19</sup>

The standard tear breakup time (TBUT) was assessed by applying moistened fluorescein strips to the conjunctival sac with minimal stimulation. The subject was then asked to gently blink five times to make sure that the fluorescein mixed adequately with the tear film. The time between the last blink and the appearance of the first corneal black spot in the tear film was used to define the TBUT and was averaged from three readings.<sup>36</sup> The Schirmer I test was performed without local anesthetic using a standard Schirmer strip (Dina strip Schirmer-Plus; GECIS, Villemorant, France) hooked for 5 minutes on the lateral one-third of the lower lid and quantified by measuring the length of wet strip in millimeters.<sup>10</sup>

### Corneal Confocal Microscopy

All study subjects were scanned with a laser IVCCM (Heidelberg Retinal Tomograph III Rostock Cornea Module HRT III RCM (Heidelberg Engineering GmbH, Heidelberg, Germany) in the center of the cornea using a section mode according to our previously published protocol.<sup>37</sup>

### Image Analysis

Six good-quality images from the center of the cornea (three from each eye) were selected following our protocol for image selection.<sup>38</sup> Image analysis was performed using our previously validated purpose-designed fully automated software (ACCMetrics; The University of Manchester, Manchester, UK).<sup>39</sup> Corneal nerve morphologic parameters included nerve fiber density (CNFD), the number of main nerve fibers/mm<sup>2</sup>; nerve branch density (CNBD), the number of branch points on the main nerves/mm<sup>2</sup>; and nerve fiber length (CNFL), the total length of nerves mm/mm<sup>2</sup>. Two high-resolution images of the basal cell layer immediately anterior to the subbasal nerve layer were captured. The AlConfocal Rapid Image Evaluation System, 2-dimensional version (ARIEs 2D) (Alcon Research Ltd, Fort Worth, TX, USA),<sup>40</sup> was used in the manual mode to quantify corneal epithelial basal cell density (CEBCD) and area (CEBCA). Two high-resolution anterior, mid, and posterior stromal images (three per eye) were selected for KD analysis. The very first high-quality image after Bowman's layer was selected for the anterior stroma and the very first high-quality image before Descemet's layer was selected for the posterior stroma with an image between the anterior and posterior stroma being selected for the midstroma.

Keratocyte cells were manually quantified using purpose-designed manual software (CCMetrics; The University of Manchester) and were identified as hyperreflective cells against the dark background in the stroma.<sup>41</sup> Mean KD was counted as the number of cells per square millimeter (cells/mm<sup>2</sup>) in the anterior, mid, and posterior stroma.

### Statistical Analysis

Statistical analysis was undertaken using IBM SPSS v19.0 (Chicago, IL, USA). All the data were expressed as mean  $\pm$  SE and analysis included descriptive and frequency statistics. To test for statistical differences, independent sample *t*-tests (Mann-Whitney *U* test for nonparametric) were used between the two groups and 1-way ANOVA with Bonferroni adjustment was used among groups. Correlations were measured by calculating the Pearson correlation coefficient (Spearman for nonparametric) for continuous variables and Pearson's  $\chi^2$  test of independence and a Fisher's exact test for categorical variables. For all comparisons  $P < 0.05$  was considered to be significant.

**TABLE 1.** Clinical, Demographic, and Ophthalmic Characteristics in Patients With T1DM and Age-Matched Control Subjects

Parameters	Controls	T1DM
Number	25	42
Age, y	48.70 ± 2.84	49.21 ± 2.53
Sex (female/male)	(14/11)	(15/27)
Ethnicity (Asian/European)	(4/21)	(5/37)
Duration of diabetes, y	0	29.98 ± 2.64*
Smoking, cigarettes/d	0.4 ± 2	1.63 ± 4.3
HbA1c, mmol/mol	34.56 ± 0.82	69.03 ± 3.31*
BMI	26.78 ± 1.16	28.01 ± 0.74
NDS, 0–10	0.48 ± 0.25	2.28 ± 0.47†
Retinopathy	0	38.1%, 16/42*
Laser treatment	0	21.4%, 9/42*
Prevalence of dry eye, %	24	50§
Eye dryness symptoms, 0–6	0.61 ± 0.26	1.26 ± 0.25
Frequency of eye dryness symptoms, 0–4	1 ± 0.26	0.87 ± 0.18§
Intensity of dryness in the morning, 0–5	0.26 ± 0.12	1.03 ± 0.23§
Intensity of dryness in the afternoon, 0–5	0.22 ± 0.15	0.61 ± 0.20
Intensity of disturbance, 0–5	0.30 ± 0.15	1.26 ± 0.26§
TBUT, s	8.5 ± 1.08	5.39 ± 0.4‡
Schirmer test, mm	10.7 ± 1.64	9.27 ± 1.36

All data are presented as mean ± SE. All symbols represent statistically significant differences compared with controls.

\*  $P < 0.0001$ .

†  $P = 0.004$ .

‡  $P = 0.006$ .

§  $P < 0.05$ .

## RESULTS

### Clinical and Peripheral Neuropathy Assessment

Forty-two patients with T1DM (age 49.21 ± 2.53; duration of diabetes 29.98 ± 2.64 years) and 25 healthy control subjects (age 48.70 ± 2.84) were assessed. There were no significant differences in age, sex, ethnicity, BMI, or smoking history between patients with T1DM and controls (Table 1). HbA1c ( $P < 0.0001$ ), NDS ( $P = 0.004$ ), prevalence of retinopathy ( $P < 0.0001$ ), and previous laser treatment ( $P < 0.0001$ ) were significantly greater in patients with T1DM (Table 1).

### Dry Eye Assessment

The prevalence (50% vs. 24%,  $P = 0.03$ ), frequency ( $P = 0.02$ ), and intensity ( $P = 0.02$ ) of DES, particularly in the morning,

**TABLE 2.** Corneal Nerve, Corneal Epithelial Cell, and Keratocyte Morphology in Patients With T1DM and Age-Matched Healthy Controls

Parameters	Controls	T1DM
NCCA, mb	0.46 ± 0.08	1.15 ± 0.16*
CNFD, no./mm <sup>2</sup>	27.34 ± 0.96	21.21 ± 1.56†
CNBD, no./mm <sup>2</sup>	38.25 ± 2.82	25.64 ± 2.20†
CNFL, mm/mm <sup>2</sup>	16.04 ± 0.57	13.23 ± 0.69‡
KD, no./mm <sup>2</sup>	434.24 ± 6.17	397.52 ± 11.57§
CEBC density, no./mm <sup>2</sup>	7492.29 ± 123	7402.25 ± 75.07
CEBC area, μm <sup>2</sup>	134.50 ± 2.19	136.17 ± 1.40

All data are presented as mean ± SE. All symbols represent statistically significant differences compared with controls.

\*  $P < 0.0001$ .

†  $P = 0.001$ .

‡  $P = 0.003$ .

§  $P = 0.04$ .

were significantly higher in patients with T1DM compared to controls (Table 1). Patients with T1DM demonstrated a significantly lower TBUT ( $P = 0.006$ ), but no difference in the Schirmer test compared to controls.

### In Vivo Corneal Confocal Microscopy and Corneal Sensation

Corneal sensation threshold was significantly ( $P < 0.0001$ ) higher and CNFD ( $P = 0.001$ ), CNBD ( $P = 0.001$ ), CNFL ( $P = 0.003$ ) and KD ( $P = 0.04$ ) were significantly lower in patients with T1DM compared to control subjects (Table 2). CEBC density and area did not differ significantly between patients with T1DM and controls and did not correlate with age, sex, HbA1c, duration of diabetes, or corneal nerve morphology.

### T1DM Patients With and Without Dry Eye

T1DM patients without dry eye had a significant reduction in TBUT ( $P = 0.02$ ) and CNBD ( $P = 0.05$ ) compared to healthy control subjects. However, when comparing T1DM patients with and without dry eye there was no significant difference in corneal sensitivity, corneal nerve morphology, or CEBC density or area (Fig.; Table 3). A significant inverse correlation ( $r = -0.53$ ,  $P = 0.02$ ) was observed between TBUT and HbA1c, but not with corneal nerve morphology or CEBC density and size.

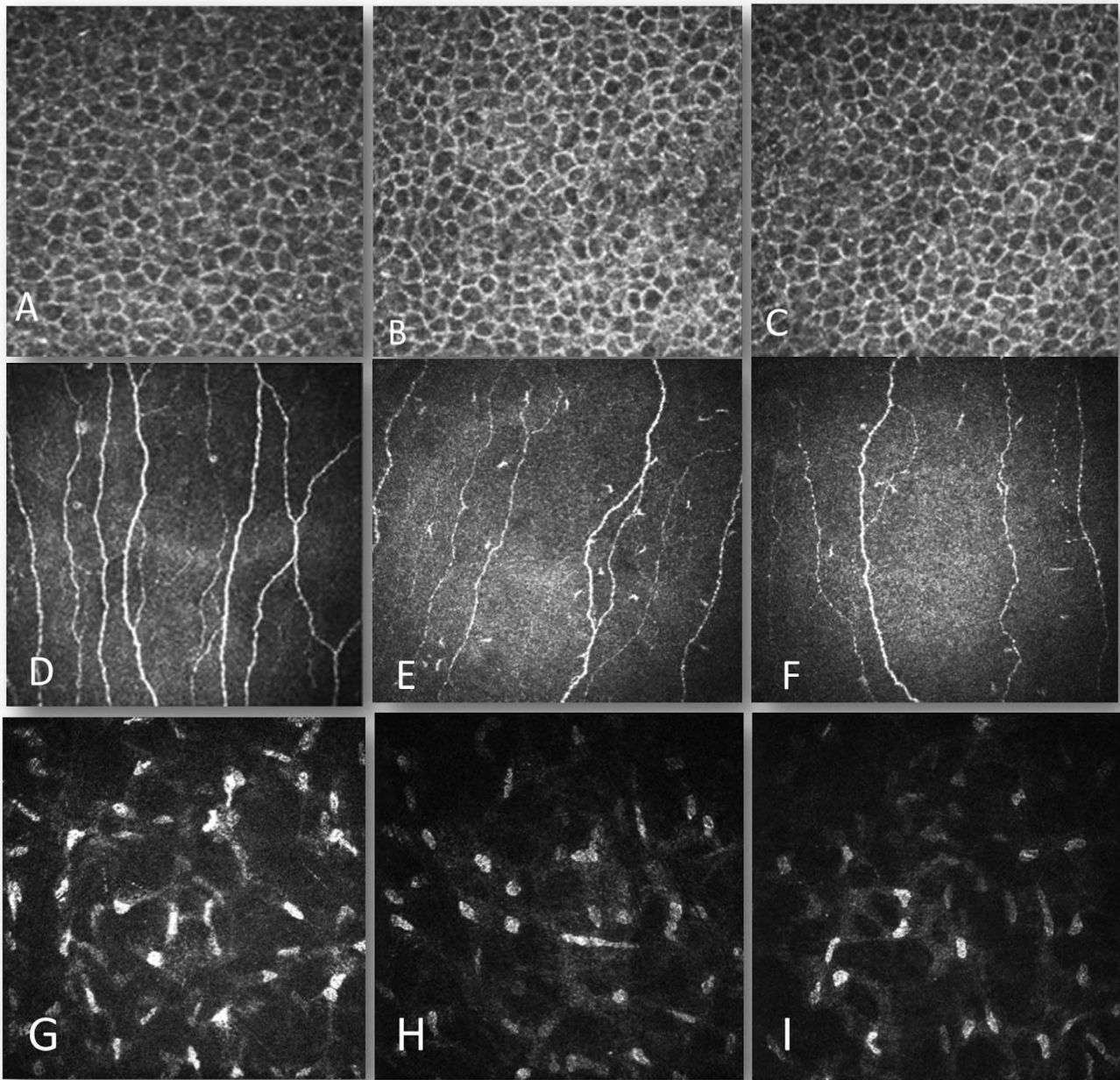
KD was significantly reduced in patients with T1DM compared to healthy controls ( $P = 0.04$ ), but did not differ between patients with and without dry eye. Mean KD showed a significant inverse correlation with NDS ( $r = -0.51$ ,  $P = 0.003$ ) and HbA1c ( $r = -0.4$ ,  $P = 0.05$ ).

## DISCUSSION

In the present study we have shown an increased prevalence and severity of dry eye disease and a significantly lower TBUT in patients with T1DM, consistent with a previous study.<sup>33</sup> Our study also shows an inverse correlation between TBUT and poor glycemic control, in agreement with the studies by Ozdemir et al.<sup>17</sup> and Najafi et al.<sup>34</sup> However, our study shows no significant difference in TBUT and Schirmer's test in diabetic patients with and without symptoms of dry eye, confirming a poor correlation between tests of dry eye and symptoms.<sup>42</sup>

Experimental and clinical studies consistently report structural, functional, and metabolic alterations in the corneas of patients with diabetes.<sup>4,16,21,37,43–45</sup> Indeed it has been postulated that diabetic keratopathy is related to corneal denervation and epithelial cell alterations.<sup>7</sup> However, few human studies have directly related DES with structural and functional alterations in the cornea. We have previously used IVCCM to show significant corneal nerve, epithelial, endothelial, and keratocyte cell abnormalities in patients with diabetes.<sup>31,46–48</sup> In the present study we also show a significant reduction in CNFD, CNBD, and CNFL. Corneal nerves play an important role in maintaining the anatomic integrity of the ocular surface and supply trophic factors that maintain epithelial cell morphology.<sup>5</sup> In a recent experimental study, a reduction in the length of the subbasal nerve plexus was associated with a reduction in corneal epithelial cell density.<sup>49</sup> However, these findings have not been translated to patients, as Chang et al.<sup>50</sup> and Ishibashi et al.<sup>44</sup> have reported no association between CEBC density and corneal nerve morphology in Type 2 diabetes mellitus (T2DM) patients. In the present study we also demonstrate no association between CEBC density or area and corneal nerve morphology and no difference between T1DM patients with and without dry eye.





**FIGURE.** Corneal confocal microscopy images of corneal epithelial basal cells, subbasal nerves, and keratocytes in a control subject (A, D, G), a patient with T1DM without dry eye (B, E, H), and a patient with T1DM and dry eye (C, F, I), respectively.

Benitez del Castillo et al.<sup>52</sup> also observed no significant change in the density of CEBCs in patients with and without dry eye syndrome. A reduction in corneal nerve morphology has been proposed to lead to reduced corneal sensitivity and lacrimal gland dysfunction with reduced tear production and tear stability. In the present study we show no association between corneal sensitivity and corneal nerve abnormalities with subjective symptoms of dry eye or tear stability and production.

In the present study we also show a significant reduction in keratocyte cell density in patients with T1DM, in agreement with previous studies.<sup>31,51</sup> We also show a significant correlation between KD and HbA1c, which could be due to an accumulation of advanced glycation end products and keratocyte apoptosis.<sup>52,53</sup> However, there was no significant difference in T1DM patients with and without dry eye.

A limitation of the current study is the subjective nature of a self-reported questionnaire to evaluate dry eye. Indeed, previous studies have shown a poor relationship between objective tests like the Schirmer test and TBUT with self-reports.<sup>54,55</sup> The evaluation of tear composition may provide insights into the underlying mechanisms of dry eye disease, but to date has been limited to T2DM. A small tear proteomic study in eight patients with T2DM and dry eye syndrome showed increased expression of apoptosis-related proteins, immunity-, and inflammation-related proteins as well as glycometabolic proteins.<sup>56</sup> A recent study has shown increased levels of tear insulin-like growth factor binding protein-3, which correlated with corneal nerve fiber length and branch density in patients with T2DM, but there was no difference between patients with and without dry eye.<sup>57</sup>

**TABLE 3.** Clinical and Demographic Characteristics, Corneal Nerve, Corneal Basal Epithelial, and Keratocyte Cell Morphology in T1DM Patients With and Without Dry Eye Compared to the Healthy Controls Without Dry Eye

Parameters	Controls No Dry Eye	T1DM No Dry Eye	T1DM Dry Eye
Number	19	23	19
Age, y	45.8 ± 2.91	49.97 ± 3.56	48.3 ± 3.65
Smoking, cigarettes/d	0.53 ± 2.2	0.96 ± 3.3	2.50 ± 5.3
HbA1c, mmol/mol	33.54 ± 0.7	67.90 ± 4.37*	70.53 ± 5.23*
Duration of diabetes, y	0	29.49 ± 3.90	30.56 ± 3.53
Retinopathy, %	0	30.4	47.4
Laser treatment, %	0	21.7	47.4
TBUT, s	8.81 ± 1.09	5.3 ± 0.37‡	5.4 ± 0.65†
Schirmer test, mm	10.18 ± 1.50	10.43 ± 2.37	8.35 ± 1.62
NCCA, mb	0.43 ± 0.07	0.99 ± 0.15	1.34 ± 0.31†
CNFD, no./mm <sup>2</sup>	27.37 ± 1.2	22.15 ± 2.33	20.62 ± 2.02§
CNBD, no./mm <sup>2</sup>	38.88 ± 3.5	26.88 ± 3.22§	24.12 ± 2.95†
CNFL, mm/mm <sup>2</sup>	16.07 ± 0.73	13.49 ± 1.05	12.92 ± 0.87
KD, no./mm <sup>2</sup>	433.12 ± 6.64	417.11 ± 11.31‡	382.63 ± 20.07†
CEBC density, no./mm <sup>2</sup>	7409.16 ± 129.6	7327.5 ± 97.4	7493.6 ± 116.2
CEBC area, μm <sup>2</sup>	135.94 ± 2.49	137.5 ± 1.85	134.56 ± 2.151

All data are presented as mean ± SE. All symbols represent statistically significant differences compared with controls.

\*  $P < 0.0001$ .

†  $P = 0.01$ .

‡  $P = 0.02$ .

§  $P = 0.04$ .

In conclusion, while corneal nerve, KD, and CEBC morphological abnormalities occur in patients with T1DM, they do not relate to the occurrence or severity of dry eye. This suggests that these abnormalities may occur independent of each other or that younger patients with T1DM may differ from older T2DM patients. Nevertheless, given the severe consequences of diabetic keratopathy, further studies exploring the underlying basis of this abnormality are warranted.

### Acknowledgments

Supported by an award from the Juvenile Diabetes Research Foundation International (JDRF) (27-2008-362). This study was undertaken in the National Institute for Health Research/Wellcome Trust Clinical Research Facility at Central Manchester University Hospitals NHS Foundation Trust. The Greater Manchester Comprehensive Local Research Network facilitated this research. Mitra Tavakoli undertook corneal confocal microscopy in a small proportion of patients and was partially involved in the study design.

Disclosure: **M. Ferdousi**, None; **I.N. Petropoulos**, None; **A. Kalteniece**, None; **S. Azmi**, None; **G. Ponirakis**, None; **N. Efron**, None; **H. Soran**, None; **R.A. Malik**, None

### References

- Stur M, Egger S, Haas A, et al. Diagnosis, therapy and follow up of diabetic eye disease [in German]. *Wien Klin Wochenschr.* 2012;124(suppl 2):50-57.
- Khan A, Petropoulos IN, Ponirakis G, Malik RA. Visual complications in diabetes mellitus: beyond retinopathy. *Diabetic Med.* 2017;34:478-484.
- Manaviat MR, Rashidi M, Afkhami-Ardekani M, Shoja MR. Prevalence of dry eye syndrome and diabetic retinopathy in type 2 diabetic patients. *BMC Ophthalmol.* 2008;8:10.
- Seifart U, Stempel I. The dry eye and diabetes mellitus [in German]. *Ophthalmologe.* 1994;91:235-239.
- Sacchetti M, Lambiase A. Diagnosis and management of neurotrophic keratitis. *Clin Ophthalmol.* 2014;8:571-579.
- Lutty GA. Effects of diabetes on the eye. *Invest Ophthalmol Vis Sci.* 2013;54:ORSF81-ORSF87.
- Inoue K, Okugawa K, Amano S, et al. Blinking and superficial punctate keratopathy in patients with diabetes mellitus. *Eye (Lond).* 2005;19:418-421.
- Achtsidis V, Eleftheriadou I, Kozanidou E, et al. Dry eye syndrome in subjects with diabetes and association with neuropathy. *Diabetes Care.* 2014;37:e210-e211.
- Cousen P, Cackett P, Bennett H, Swa K, Dhillon B. Tear production and corneal sensitivity in diabetes. *J Diabetes Complications.* 2007;21:371-373.
- Dogru M, Katakami C, Inoue M. Tear function and ocular surface changes in noninsulin-dependent diabetes mellitus. *Ophthalmology.* 2001;108:586-592.
- Myers J, Goebbels U, Dzeikan G, et al. Exercise training and myocardial remodeling in patients with reduced ventricular function: one-year follow-up with magnetic resonance imaging. *Am Heart J.* 2000;139:252-261.
- Lv H, Li A, Zhang X, et al. Meta-analysis and review on the changes of tear function and corneal sensitivity in diabetic patients. *Acta Ophthalmol.* 2014;92:e96-e104.
- Herrero-Vanrell R, Peral A. International Dry Eye Workshop (DEWS). Update of the disease [in Spanish]. *Arch Soc Esp Ophthalmol.* 2007;82:733-734.
- Yang WJ, Yang YN, Cao J, et al. Risk factors for dry eye syndrome: a retrospective case-control study. *Optom Vis Sci.* 2015;92:e199-e205.
- Inoue K, Kato S, Ohara C, Numaga J, Amano S, Oshika T. Ocular and systemic factors relevant to diabetic keratoepitheliopathy. *Cornea.* 2001;20:798-801.
- Sanchez-Thorin JC. The cornea in diabetes mellitus. *Int Ophthalmol Clin.* 1998;38:19-36.
- Ozdemir M, Buyukbese MA, Cetinkaya A, Ozdemir G. Risk factors for ocular surface disorders in patients with diabetes mellitus. *Diabetes Res Clin Pract.* 2003;59:195-199.
- Kaiserman I, Kaiserman N, Nakar S, Vinker S. Dry eye in diabetic patients. *Am J Ophthalmol.* 2005;139:498-503.
- Tavakoli M, Kallinikos PA, Efron N, Boulton AJ, Malik RA. Corneal sensitivity is reduced and relates to the severity of neuropathy in patients with diabetes. *Diabetes Care.* 2007;30:1895-1897.
- Benitez-Del-Castillo JM, Acosta MC, Wassfi MA, et al. Relation between corneal innervation with confocal microscopy and



- corneal sensitivity with noncontact esthesiometry in patients with dry eye. *Invest Ophthalmol Vis Sci.* 2007;48:173-181.
21. Quadrado MJ, Popper M, Morgado AM, Murta JN, Van Best JA. Diabetes and corneal cell densities in humans by in vivo confocal microscopy. *Cornea.* 2006;25:761-768.
  22. West-Mays JA, Dwivedi DJ. The keratocyte: corneal stromal cell with variable repair phenotypes. *Int J Biochem Cell Biol.* 2006;38:1625-1631.
  23. Zhang L, Anderson MC, Liu CY. The role of corneal stroma: a potential nutritional source for the cornea. *J Nat Sci.* 2017;3:e428.
  24. Muller LJ, Pels E, Vrensen GF. The specific architecture of the anterior stroma accounts for maintenance of corneal curvature. *Br J Ophthalmol.* 2001;85:437-443.
  25. Yam GH, Williams GP, Setiawan M, et al. Nerve regeneration by human corneal stromal keratocytes and stromal fibroblasts. *Sci Rep.* 2017;7:45396.
  26. Tuominen IS, Kontinen YT, Vesaluoma MH, Moilanen JA, Helinto M, Tervo TM. Corneal innervation and morphology in primary Sjogren's syndrome. *Invest Ophthalmol Vis Sci.* 2003;44:2545-2549.
  27. Villani E, Galimberti D, Viola F, Mapelli C, Ratiglia R. The cornea in Sjogren's syndrome: an in vivo confocal study. *Invest Ophthalmol Vis Sci.* 2007;48:2017-2022.
  28. Villani E, Viola F, Sala R, et al. Corneal involvement in Graves' orbitopathy: an in vivo confocal study. *Invest Ophthalmol Vis Sci.* 2010;51:4574-4578.
  29. Alhatem A, Cavalcanti B, Hamrah P. In vivo confocal microscopy in dry eye disease and related conditions. *Semin Ophthalmol.* 2012;27:138-148.
  30. Benitez-del-Castillo JM, Acosta MC, Wassfi MA, et al. Relation between corneal innervation with confocal microscopy and corneal sensitivity with noncontact esthesiometry in patients with dry eye. *Invest Ophthalmol Vis Sci.* 2007;48:173-181.
  31. Bitirgen G, Ozkagnici A, Malik RA, Kerimoglu H. Corneal nerve fibre damage precedes diabetic retinopathy in patients with type 2 diabetes mellitus. *Diabet Med.* 2014;31:431-438.
  32. Benitez del Castillo JM, Wasfy MA, Fernandez C, Garcia-Sanchez J. An in vivo confocal masked study on corneal epithelium and subbasal nerves in patients with dry eye. *Invest Ophthalmol Vis Sci.* 2004;45:3030-3035.
  33. Misra SL, Patel DV, McGhee CN, et al. Peripheral neuropathy and tear film dysfunction in type 1 diabetes mellitus. *J Diabetes Res.* 2014;2014:848659.
  34. Najafi L, Malek M, Valojerdi AE, et al. Dry eye and its correlation to diabetes microvascular complications in people with type 2 diabetes mellitus. *J Diabetes Complications.* 2013;27:459-462.
  35. Begley CG, Caffery B, Chalmers RL, Mitchell GL; Dry Eye Investigation (DREI) Study Group. Use of the dry eye questionnaire to measure symptoms of ocular irritation in patients with aqueous tear deficient dry eye. *Cornea.* 2002;21:664-670.
  36. Cho P, Leung L, Lam A, Choi A. Tear break-up time: clinical procedures and their effects. *Ophthalmic Physiol Opt.* 1998;18:319-324.
  37. Tavakoli M, Malik RA. Corneal confocal microscopy: a novel non-invasive technique to quantify small fibre pathology in peripheral neuropathies. *J Vis Exp.* 2011;47:2194.
  38. Kalteniece A, Ferdousi M, Adam S, et al. Corneal confocal microscopy is a rapid reproducible ophthalmic technique for quantifying corneal nerve abnormalities. *PLoS One.* 2017;12:e0183040.
  39. Petropoulos IN, Alam U, Fadavi H, et al. Rapid automated diagnosis of diabetic peripheral neuropathy with in vivo corneal confocal microscopy. *Invest Ophthalmol Vis Sci.* 2014;55:2071-2078.
  40. Sindt CW, Lay B, Bouchard H, Kern JR. Rapid image evaluation system for corneal in vivo confocal microscopy. *Cornea.* 2013;32:460-465.
  41. Zheng T, Le Q, Hong J, Xu J. Comparison of human corneal cell density by age and corneal location: an in vivo confocal microscopy study. *BMC Ophthalmol.* 2016;16:109.
  42. Najafi L, Malek M, Valojerdi AE, Khamseh ME, Aghaei H. Dry eye disease in type 2 diabetes mellitus; comparison of the tear osmolarity test with other common diagnostic tests: a diagnostic accuracy study using STARD standard. *J Diabetes Metab Disord.* 2015;14:39.
  43. Tavakoli M, Quattrini C, Abbott C, et al. Corneal confocal microscopy: a novel noninvasive test to diagnose and stratify the severity of human diabetic neuropathy. *Diabetes Care.* 2010;33:1792-1797.
  44. Ishibashi F, Kawasaki A, Yamanaka E, Kosaka A, Uetake H. Morphometric features of corneal epithelial basal cells, and their relationship with corneal nerve pathology and clinical factors in patients with type 2 diabetes. *J Diabetes Investig.* 2013;4:492-501.
  45. Yoon KC, Im SK, Seo MS. Changes of tear film and ocular surface in diabetes mellitus. *Korean J Ophthalmol.* 2004;18:168-174.
  46. Tavakoli M, Mitu-Pretorian M, Petropoulos IN, et al. Corneal confocal microscopy detects early nerve regeneration in diabetic neuropathy after simultaneous pancreas and kidney transplantation. *Diabetes.* 2013;62:254-260.
  47. Petropoulos IN, Alam U, Fadavi H, et al. Corneal nerve loss detected with corneal confocal microscopy is symmetrical and related to the severity of diabetic polyneuropathy. *Diabetes Care.* 2013;36:3646-3651.
  48. Ziegler D, Papanas N, Zhivov A, et al. Early detection of nerve fiber loss by corneal confocal microscopy and skin biopsy in recently diagnosed type 2 diabetes. *Diabetes.* 2014;63:2454-2463.
  49. Cai D, Zhu M, Petroll WM, Koppaka V, Robertson DM. The impact of type 1 diabetes mellitus on corneal epithelial nerve morphology and the corneal epithelium. *Am J Pathol.* 2014;184:2662-2670.
  50. Chang PY, Carrel H, Huang JS, et al. Decreased density of corneal basal epithelium and subbasal corneal nerve bundle changes in patients with diabetic retinopathy. *Am J Ophthalmol.* 2006;142:488-490.
  51. Kalteniece A, Ferdousi M, Azmi S, Marshall A, Soran H, Malik RA. Keratocyte density is reduced and related to corneal nerve damage in diabetic neuropathy. *Invest Ophthalmol Vis Sci.* 2018;59:3584-3590.
  52. Kim J, Kim C-S, Sohn E, Jeong I-H, Kim H, Kim JS. Involvement of advanced glycation end products, oxidative stress and nuclear factor-kappaB in the development of diabetic keratopathy. *Graefes Arch Clin Exp Ophthalmol.* 2011;249:529-536.
  53. Watanabe H, Katakami C, Miyata S, Negi A. Corneal disorders in KKAY mouse: a type 2 diabetes model. *Japan J Ophthalmol.* 2002;46:130-139.
  54. Nichols KK, Nichols JJ, Mitchell GL. The lack of association between signs and symptoms in patients with dry eye disease. *Cornea.* 2004;23:762-770.
  55. McCarty CA, Bansal AK, Livingston PM, Stanislavsky YL, Taylor HR. The epidemiology of dry eye in Melbourne, Australia. *Ophthalmology.* 1998;105:1114-1119.
  56. Li B, Sheng M, Xie L, et al. Tear proteomic analysis of patients with type 2 diabetes and dry eye syndrome by two-dimensional nano-liquid chromatography coupled with tandem mass spectrometry. *Invest Ophthalmol Vis Sci.* 2014;55:177-186.
  57. Stuard WL, Titone R, Robertson DM. Tear levels of insulin-like growth factor binding protein 3 correlate with subbasal nerve plexus changes in patients with type 2 diabetes mellitus. *Invest Ophthalmol Vis Sci.* 2017;58:6105-6112.