

Applying Artificial Intelligence in Pediatric Clinical Trials: Potential Impacts and Obstacles

Henry P. Foote, MD; Michael Cohen-Wolkowicz, MD, PhD; Christopher J. Lindsell, PhD; and Christoph P. Hornik, MD, MPH, PhD

ABBREVIATIONS AI, artificial intelligence; EHR, electronic health record

KEYWORDS artificial intelligence; clinical trials; machine learning; pediatrics; trial design

J Pediatr Pharmacol Ther 2024;29(3):336–340

DOI: 10.5863/1551-6776-29.3.336

Introduction

Recent articles in this *Journal* have discussed the role of artificial intelligence (AI) in research writing and manuscript preparation, recognizing its immense power to streamline the scientific publication workflow as well as addressing concerns for academic integrity and unvalidated output.^{1,2} These opportunities and obstacles extend throughout the clinical research landscape. Clinical trials in the pediatric population are particularly challenging and may benefit considerably from AI where both existing and novel therapies are understudied and most drugs continue to be used off-label without adequate dosing, efficacy, and safety data to inform prescribing.³ Challenges persist with dose and endpoint selection, patient and disease heterogeneity, and patient recruitment.⁴ The great potential for AI is to reduce the high cost and time investments of traditional randomized controlled trials by overcoming the many population-specific barriers with innovative strategies.

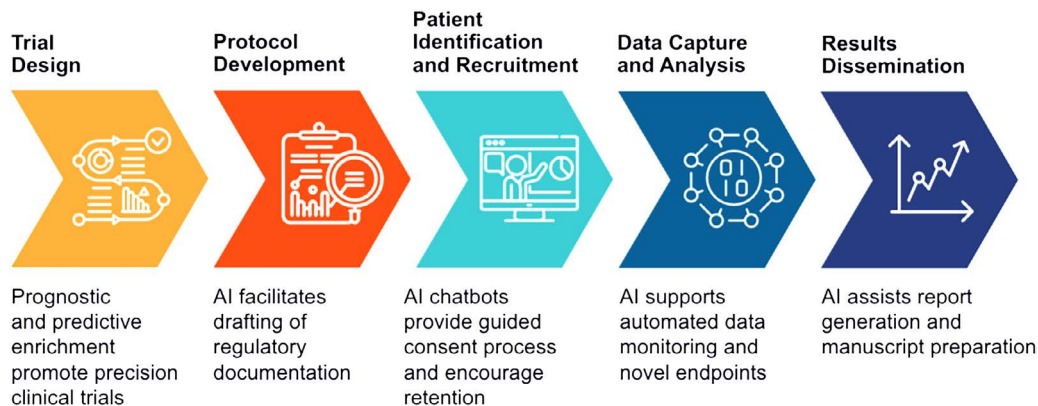
AI has the capability to improve numerous aspects of the clinical trial process to help overcome these hurdles. The spectrum of available methods ranges from traditional regression models to deep learning neural networks that allow for predicting outcomes from complex inputs such as multilayer cross-sectional images or time series electronic health record (EHR) data.⁵ Natural language processing and large language models use computational techniques to analyze the content and meaning of text, supporting both data extraction and text generation.^{6,7} Such models can collate relevant clinical trial data from multiple studies, facilitating meta-analyses and future trial development.⁸ Additionally, they can aid the technical writing required in trial development through drafting protocols, patient consent forms, or review board documentation.⁷ Here we discuss potential applications of these methods, collectively referred to as AI, across key areas in pediatric clinical trials (Figure). In presenting the opportunities, we also highlight the critical risks and concerns that must be addressed as novel applications continue

to emerge at an accelerated pace. Finally, given the broad potential applications of AI, we will limit our focus primarily on its role in clinical trials, recognizing its transformative potential spans across preclinical drug development, clinical pharmacology, and clinical decision support.^{9–11}

Patient and Treatment Selection

Because AI improves the ability to accurately predict patient outcomes, we expect the promise of precision clinical trials to be realized, potentially allowing for shorter, smaller, and more cost-efficient trials.¹² Prognostic enrichment (including patients more likely to have an outcome) and predictive enrichment (including patients more likely to benefit from therapy) are recognized strategies for increasing trial efficiency.¹³ As just one of many examples, a recent study applied a mortality risk score to adults with heart failure in 4 community and 5 clinical trial cohorts, finding that selecting higher-risk patients would markedly increase the expected event rate and could reduce trial size by almost 70%.¹⁴ Conversely, in adults with sepsis, prospectively selecting only those patients at moderate risk of death could have resulted in a positive clinical trial of a polyclonal anti-tumor necrosis factor- α fragment antibody by excluding those too sick to benefit from treatment as well as those whose health would have improved regardless of trial arm.¹⁵

Predictive enrichment techniques have been commonly used in the field of oncology, which has established a data-rich environment with a combination of genetic profiles, tumor markers, and multiple targeted therapies. Studies in adults have combined genomic profiles of a patient's tumor with outcomes from prior trials to predict progression-free survival and select the therapy of most likely benefit.^{16,17} The use of AI in pediatric oncology is more nascent with approaches largely based on retrospective analysis of published studies rather than prospective applications.¹⁸ Interestingly, there has been much progress in the more challenging

Figure. Proposed use cases for AI throughout the pediatric clinical trial life cycle.

AI, artificial intelligence.

environment of pediatric septic shock where decisions must be made rapidly, often without rich data. Strategies for prognostic enrichment were reported a decade ago and have evolved rapidly to include both prognostic and predictive strategies within the same cohort.^{19,20} Recently, a study of pediatric patients with sepsis generated pediatric sepsis phenotypes with 4 distinct biomarker profiles differing in their clinical trajectories.²¹ Consistent with studies in adults, there were children likely to benefit from anti-inflammatory therapies, whereas others might possibly be harmed.²²

Prognostic and predictive enrichment strategies have the potential to support precision clinical trial design. To ensure benefit across pediatric populations, much work is needed to define disease-specific data patterns that reliably support diagnosis and prognosis. Successful AI will likely incorporate diverse inputs including laboratory and multi-omic data, as well as dynamically tracked data generated both in the course of health care and through wearable technology.²³ As participant selection strategies integrate ever-more data sources, it will be critical to ensure availability of information among those most at risk of inequity, and for whom existing data may be incomplete or inaccurate. Inadvertently excluding those without access to the technologies needed to generate data, or for whom data privacy is paramount, becomes a primary concern to ensure equitable data capture. Indeed, the need for adequate data security is a primary challenge for adopting AI into clinical trials.²⁴

Patient Identification and Recruitment

AI has the potential to streamline patient identification and recruitment as well as to facilitate ongoing communication with patients and their families throughout a trial. AI can combine structured data, such as diagnosis codes, with unstructured data from clinical notes to provide a curated population to then manually screen for trial eligibility, significantly improving

screening efficiency.²⁵ Trial-centric strategies, in which a patient population is assessed on criteria for a specific trial, and patient-centric strategies, in which known trials are matched to a specific patient, have both been proposed.²⁶ One study reviewed 215 pediatric oncology patients across 55 trials and found that AI could cut screening workload by up to 90%.²⁷ Importantly, AI can maintain both high sensitivity and negative predictive value to ensure identification of all potentially eligible patients.²⁸ In addition to cohort identification, embedding AI within the EHR can allow for real-time identification of patients for whom timeliness of intervention is critical, such as in the emergency department or intensive care unit.^{29,30} Going beyond simply identifying potentially eligible patients, recent studies have used clinical, demographic, and trial characteristics to predict whether patients would agree to consent for a clinical trial.^{31,32}

Identifying potential participants and predicting who would be most likely to consent is presumed to decrease resources required for patient recruitment, yet it will be essential to ensure inequity is not perpetuated by integrating bias into the recruitment pipeline. This is a critical risk in the use of AI for recruitment. For example, Ni et al³¹ found that Black children and those with income less than 50% of the poverty line were less likely to consent to a clinical trial in a pediatric emergency department than White children and those from households with higher income. Selecting trial participants based on likelihood of consent would exclude Black children and those living in poverty. Women and minorities are consistently underrepresented in clinical trials, and equitable enrollment must actively seek out these groups rather than avoiding approaching them for consent.³³ Encouragingly, an AI tool was able to evaluate how adjusting eligibility criteria could allow for inclusion of more women in a nationwide database of adults with lung cancer, indicating similar analyses should be applied to pediatric populations.³⁴

Beyond the existing use cases where AI is used to identify potential cohorts for study, we suggest AI has the potential to disrupt the recruitment process. Generative AI has the capability of interacting through audio, visual, and written interfaces by using language and context specific to the user. We expect the scenario to emerge where children and their guardians can engage with a multimodal chatbot to learn more about the research and to answer questions specific to the potential participant's lived context. Such an interaction could be guided to ensure understanding of the research and completion of a valid consent process. The chatbot could remain available through the life cycle of a trial and be personalized to optimize participant engagement and retention. In addition to solving regulatory hurdles to such a use case, it will be critical to ensure that such technology does not cross the line from being informative to being coercive. As these technologies become more personalized, associated institutional review board and regulatory oversight will be needed to ensure adequate protections for both patient and patient health information.

Data Capture and Analysis

Clinical trials traditionally require labor-intensive and costly manual data entry for safety and endpoint documentation. AI is already being used to extract real-world data from the EHR, as well as to detect data anomalies that may occur in the data entry process.^{35,36} Automated extraction allows for increased complexity of outcomes; in addition to structured clinical data such as length of stay or mortality, AI can analyze disease trajectories, medical images, and clinical notes.³⁷ The analysis of time-series data, especially from existing monitoring devices and wearable technology, can provide rich information and minimize trial burden on families.²⁴ Further, AI could be used to define novel trial endpoints. For example, wearable data have shown potential in measuring attention-deficit/hyperactivity disorder and sleep problems in children, and AI analysis of interaction with a digital app may improve autism detection.^{38–40} Similarly, AI image interpretation has comparable accuracy to trained specialists in detecting breast cancer screening mammograms and discriminating malignant from benign skin lesions.^{41,42}

Today, trial endpoints are typically manually adjudicated. While this can contribute significant cost and time burden to trials, it is a necessary process for minimizing bias and ensuring endpoints are related to the study intervention or procedures.⁴³ Automating endpoint evaluation could standardize assessment and hasten trial completion.⁴⁴ In adult heart failure, AI has demonstrated equivalent performance to a manual adjudication process.⁴⁵

As algorithms for automating measurements multiply, there is increasing urgency for validating AI-generated

endpoints for use in clinical trials. Extracting accurate EHR data requires efficient data processing as well as robust methods for dealing with biases in EHR data, including missing data points or patients lost to follow-up.^{46,47} As with consent, there is the potential for AI to interact with participants, providers, and investigators to maximize the completeness and quality of data. One might even imagine the scenario where a chatbot engages with a participant to assess patient-reported outcomes in a culturally responsive manner while also considering their age and language ability.

Risks and Limitations

A foundational pillar for advancing AI in clinical trials must be to vet its application with a degree of scrutiny that matches the potential harm to participants and patients. If inequity and error persist in the generation of evidence, structural inequity will continue. The recent Executive Order on the Safe, Secure, and Trustworthy Development and Use of Artificial Intelligence details the critical necessity for adequate oversight and regulation to ensure adherence to best practices and minimization of harm for these rapidly evolving technologies.⁴⁸ Using AI to generate technical writings that are subsequently reviewed by personnel with appropriate expertise and training may not warrant regulation. However, AI that affects patient selection or data measurement, analysis, or interpretation will require a regulatory framework to ensure appropriate patient protections and to limit furthering disparities in patient care.⁴⁹ Without such oversight, AI trained on existing data in which there are discrepancies in care or outcomes between groups will perpetuate bias.⁵⁰ Any use of AI that diminishes trustworthiness and representativeness of clinical trials must be avoided at all costs.

AI tools only perform well if their input data match the clinically relevant population. AI must be trained on diverse cohorts, which will require collaboration and data sharing across medical centers and institutions.⁴⁹ Like with drug therapies, in which dosing or efficacy in children should not be merely extrapolated from adult trials, AI must also be validated for population- and disease-specific cohorts prior to deployment. The exponential increase in publications evaluating AI for clinical applications must be accompanied with transparent reporting of model performance with adherence to reporting guidelines such as CONSORT-AI, with careful attention to prospective validation.^{51–53} Generative AI is at particular risk for factual errors, and for bias and harm, when responding to clinical questions or developing scientific reports.^{54,55} Guardrails will be critical for any application using text generation, and for now, such applications are expected to require manual auditing to ensure the veracity of the provided text.

Overall, there is great potential for AI to streamline the clinical trial, from initial protocol development

through results dissemination and manuscript preparation. Coupling AI with advances in trial design, such as for pragmatic trials and master protocols testing multiple drugs in the same platform, has the potential to facilitate the completion of pediatric clinical trials across therapies and populations.

Article Information

Affiliations. Department of Pediatrics (HPF, MC-W, CPH), Duke University Medical Center, Durham, NC; Duke Clinical Research Institute (MC-W, CJL, CPH), Durham, NC; Department of Biostatistics and Bioinformatics (CJL), Duke University School of Medicine, Durham, NC.

Correspondence. Christoph P. Hornik, MD, PhD, MPH; christoph.hornik@duke.edu

Disclosures. The authors declare no conflicts or financial interest in any product or service mentioned in this editorial, including equipment, employment, gifts, and honoraria.

Ethical Approval and Informed Consent. Not applicable.

Acknowledgements. Henry P. Foote is supported by NICHD of the National Institutes of Health (NIH) under award number T32HD094671. Michael Cohen-Wolkowicz receives support for research from the NIH (1U24-MD016258), National Institute of Allergy and Infectious Diseases (HHSN2722015000061, 1K24-AI143971), US Food and Drug Administration (5U18-FD006298), and industry for drug development in adults and children. Christopher J. Lindsell reports grants to institution from NIH, CDC, and DoD; contracts to institution from Entegron, Endpoint Health, BioMerieux, Biomeme, Novartis, and AstraZeneca; income from VUMC, Emory University, and Rocket Pharmaceuticals for research services; stock options in Bioscape Digital; patents for risk stratification in sepsis and septic shock held by Cincinnati Children's Hospital Medical Center; and income from ACTS for service as Editor-In-Chief of the *Journal of Clinical and Translational Science*. Christoph P. Hornik receives salary support for research from NIH, FDA, the Burroughs Wellcome Fund, and other sponsors for drug development in adults and children (<https://dcric.org/about-us/conflict-of-interest>).

Submitted. January 10, 2024

Accepted. January 18, 2024

Copyright. Pediatric Pharmacy Association. All rights reserved. For permissions, email: membership@pediatricpharmacy.org

References

1. Biswas SS. ChatGPT for research and publication: a step-by-step guide. *J Pediatr Pharmacol Ther.* 2023;28(6):576–584.
2. Reed MD. Artificial Intelligence—AI—and The Journal of Pediatric Pharmacology and Therapeutics. *J Pediatr Pharmacol Ther.* 2023;28(4):284–286.
3. O'Hara K, Martin JH, and Schneider JJ. Barriers and challenges in performing pharmacokinetic studies to inform dosing in the neonatal population. *Pharmacy.* 2020;8(1):16.
4. Torok RD, Li JS, Kannankeril PJ, et al. Recommendations to enhance pediatric cardiovascular drug development: report of a multi-stakeholder think tank. *J Am Heart Assoc.* 2018;7(4):e007283.
5. Hinton G. Deep learning—a technology with the potential to transform health care. *JAMA.* 2018;320(11):1101–1102.
6. Hirschberg J, Manning CD. Advances in natural language processing. *Science.* 2015;349(6245):261–266.
7. Ghim JL, Ahn S. Transforming clinical trials: the emerging roles of large language models. *Transl Clin Pharmacol.* 2023;31(3):131–138.
8. Gates A, Gates M, Sim S, et al. Creating efficiencies in the extraction of data from randomized trials: a prospective evaluation of a machine learning and text mining tool. *BMC Med Res Methodol.* 2021;21(1):169.
9. Johnson M, Patel M, Phipps A, et al. The potential and pitfalls of artificial intelligence in clinical pharmacology. *CPT Pharmacometrics Syst Pharmacol.* 2023;12(3):279–284.
10. Vamathevan J, Clark D, Czodrowski P, et al. Applications of machine learning in drug discovery and development. *Nature Rev Drug Discovery.* 2019;18(6):463–477.
11. Ramgopal S, Sanchez-Pinto LN, Horvat CM, et al. Artificial intelligence-based clinical decision support in pediatrics. *Pediatr Res.* 2023;93(2):334–341.
12. Lee CS, Lee AY. How artificial intelligence can transform randomized controlled trials. *Transl Vis Sci Technol.* 2020;9(2):9.
13. Harrer S, Shah P, Antony B, Hu J. Artificial intelligence for clinical trial design. *Trends Pharmacol Sci.* 2019;40(8):577–591.
14. Jering KS, Campagnari C, Claggett B, et al. Improving clinical trial efficiency using a machine learning-based risk score to enrich study populations. *Eur J Heart Fail.* 2022;24(8):1418–1426.
15. Wong HR, Lindsell CJ. An enrichment strategy for sepsis clinical trials. *Shock.* 2016;46(6):632–634.
16. Huang C, Clayton EA, Matyunina LV, et al. Machine learning predicts individual cancer patient responses to therapeutic drugs with high accuracy. *Sci Rep.* 2018;8(1):16444.
17. Schperberg AV, Boichard A, Tsigelny IF, et al. Machine learning model to predict oncologic outcomes for drugs in randomized clinical trials. *Int J Cancer.* 2020;147(9):2537–2549.
18. Ramesh S, Chokkara S, Shen T, et al. Applications of artificial intelligence in pediatric oncology: a systematic review. *JCO Clin Cancer Inform.* 2021;5:1208–1219.
19. Wong HR, Atkinson SJ, Cvijanovich NZ, et al. Combining prognostic and predictive enrichment strategies to identify children with septic shock responsive to corticosteroids. *Crit Care Med.* 2016;44(10):1000–1003.
20. Atkinson SJ, Cvijanovich NZ, Thomas NJ, et al. Corticosteroids and pediatric septic shock outcomes: a risk stratified analysis. *PLoS One.* 2014;9(11):e112702.
21. Qin Y, Kernan KF, Fan Z, et al. Machine learning derivation of four computable 24-h pediatric sepsis phenotypes to facilitate enrollment in early personalized anti-inflammatory clinical trials. *Crit Care.* 2022;26(1):128.
22. Wong HR, Hart KW, Lindsell CJ, Sweeney TE. External corroboration that corticosteroids may be harmful to septic shock endotype A patients. *Crit Care Med.* 2021;49(1):e98–e101.

23. Subbiah V. The next generation of evidence-based medicine. *Nat Med*. 2023;29(1):49–58.
24. Inan OT, Tenaerts P, Prindville SA, et al. Digitizing clinical trials. *NPJ Digit Med*. 2020;3:101.
25. Cai T, Cai F, Dahal KP, et al. Improving the efficiency of clinical trial recruitment using an ensemble machine learning to assist with eligibility screening. *ACR Open Rheumatol*. 2021;3(9):593–600.
26. Kaskovich S, Wyatt KD, Oliwa T, et al. Automated matching of patients to clinical trials: a patient-centric natural language processing approach for pediatric leukemia. *JCO Clin Cancer Inform*. 2023;7:e2300009.
27. Ni Y, Wright J, Perentesis J, et al. Increasing the efficiency of trial-patient matching: automated clinical trial eligibility pre-screening for pediatric oncology patients. *BMC Med Inform Decis Mak*. 2015;15:28.
28. Idnay B, Dreisbach C, Weng C, Schnall R. A systematic review on natural language processing systems for eligibility prescreening in clinical research. *J Am Med Inform Assoc*. 2021;29(1):197–206.
29. Kanbar LJ, Wissel B, Ni Y, et al. Implementation of machine learning pipelines for clinical practice: development and validation study. *JMIR Med Inform*. 2022;10(12):e37833.
30. Haddad T, Helgeson JM, Pomerleau KE, et al. Accuracy of an artificial intelligence system for cancer clinical trial eligibility screening: retrospective pilot study. *JMIR Med Inform*. 2021;9(3):e27767.
31. Ni Y, Beck AF, Taylor R, et al. Will they participate: predicting patients' response to clinical trial invitations in a pediatric emergency department. *J Am Med Inform Assoc*. 2016;23(4):671–680.
32. Vazquez J, Abdelrahman S, Byrne LM, et al. Using supervised machine learning classifiers to estimate likelihood of participating in clinical trials of a de-identified version of ResearchMatch. *J Clin Transl Sci*. 2020;5(1):e42.
33. Geller SE, Koch AR, Roesch P, et al. The more things change, the more they stay the same: a study to evaluate compliance with inclusion and assessment of women and minorities in randomized controlled trials. *Acad Med*. 2018;93(4):630–635.
34. Liu R, Rizzo S, Whipple S, et al. Evaluating eligibility criteria of oncology trials using real-world data and AI. *Nature*. 2021;592(7855):629–633.
35. Churova V, Vyskovsky R, Marsalova K, et al. Anomaly detection algorithm for real-world data and evidence in clinical research: implementation, evaluation, and validation study. *JMIR Med Inform*. 2021;9(5):e27172.
36. Cheng AC, Banasiewicz MK, Johnson JD, et al. Evaluating automated electronic case report form data entry from electronic health records. *J Clin Transl Sci*. 2023;7(1):e29.
37. Goulooze SC, Zwep LB, Vogt JE, et al. Beyond the randomized clinical trial: innovative data science to close the pediatric evidence gap. *Clin Pharmacol Ther*. 2020;107(4):786–795.
38. Naseri Jahfari A, Tax D, Reinders M, van der Bilt I. Machine learning for cardiovascular outcomes from wearable data: systematic review from a technology readiness level point of view. *JMIR Med Inform*. 2022;10(1):e29434.
39. Kim WP, Kim HJ, Pack SP, et al. Machine learning-based prediction of attention-deficit/hyperactivity disorder and sleep problems with wearable data in children. *JAMA Netw Open*. 2023;6(3):e233502.
40. Perochon S, Di Martino JM, Carpenter KLH, et al. Early detection of autism using digital behavioral phenotyping. *Nat Med*. 2023;29(10):2489–2497.
41. Esteva A, Kuprel B, Novoa RA, et al. Dermatologist-level classification of skin cancer with deep neural networks. *Nature*. 2017;542(7639):115–118.
42. Rodriguez-Ruiz A, Lang K, Gubern-Merida A, et al. Stand-alone artificial intelligence for breast cancer detection in mammography: comparison with 101 radiologists. *J Natl Cancer Inst*. 2019;111(9):916–922.
43. Godolphin PJ, Bath PM, Algra A, et al. Cost-benefit of outcome adjudication in nine randomised stroke trials. *Clin Trials*. 2020;17(5):576–580.
44. Hernandez AF, Lindsell CJ. The future of clinical trials: artificial to augmented to applied intelligence. *JAMA*. 2023;330(21):2061–2063.
45. Cunningham JW, Singh P, Reeder C, et al. Natural language processing for adjudication of heart failure in a multicenter clinical trial: a secondary analysis of a randomized clinical trial [published online ahead of print Nov 11, 2023]. *JAMA Cardiol*. 2023. doi: 10.1001/jamacardio.2023.4859
46. Goldstein BA, Navar AM, Pencina MJ, Ioannidis JP. Opportunities and challenges in developing risk prediction models with electronic health records data: a systematic review. *J Am Med Inform Assoc*. 2017;24(1):198–208.
47. Tang S, Davarmanesh P, Song Y, et al. Democratizing EHR analyses with FIDDLE: a flexible data-driven preprocessing pipeline for structured clinical data. *J Am Med Inform Assoc*. 2020;27(12):1921–1934.
48. Executive Order on the Safe, Secure, and Trustworthy Development and Use of Artificial Intelligence. 2023.
49. Weissler EH, Naumann T, Andersson T, et al. The role of machine learning in clinical research: transforming the future of evidence generation. *Trials*. 2021;22(1):537.
50. Farmer N, Osei Baah F, Williams F, et al. Use of a community advisory board to build equitable algorithms for participation in clinical trials: a protocol paper for HoPeNET. *BMJ Health Care Inform*. 2022;29(1):e100453.
51. Liu Q, Huang R, Hsieh J, et al. Landscape analysis of the application of artificial intelligence and machine learning in regulatory submissions for drug development from 2016 to 2021. *Clin Pharmacol Ther*. 2023;113(4):771–774.
52. Pattathil N, Zhao JZL, Sam-Oyerinde O, Felfeli T. Adherence of randomised controlled trials using artificial intelligence in ophthalmology to CONSORT-AI guidelines: a systematic review and critical appraisal. *BMJ Health Care Inform*. 2023;30(1):e100757.
53. Liu X, Cruz Rivera S, Moher D, et al. Reporting guidelines for clinical trial reports for interventions involving artificial intelligence: the CONSORT-AI extension. *Nat Med*. 2020;26(9):1364–1374.
54. Singhal K, Azizi S, Tu T, et al. Large language models encode clinical knowledge. *Nature*. 2023;620(7972):172–180.
55. Hua HU, Kaakour AH, Rachitskaya A, et al. Evaluation and comparison of ophthalmic scientific abstracts and references by current artificial intelligence chatbots. *JAMA Ophthalmol*. 2023;141(9):819–824.