

Numerical analysis of hydraulic jumps using OpenFOAM

Arnau Bayon-Barrachina and Petra Amparo Lopez-Jimenez

ABSTRACT

The present paper deals with a hydraulic jump study, characterization and numerical modeling. Hydraulic jumps constitute a common phenomenon in the hydraulics of open channels that increases the shear stress on streambeds, so promoting their erosion. A three-dimensional computational fluid dynamics model is proposed to analyze hydraulic jumps in horizontal smooth rectangular prismatic open-air channels (i.e., the so-called classical hydraulic jump). Turbulence is modeled using three widely used Reynolds-averaged Navier–Stokes (RANS) models, namely: Standard $k - \varepsilon$, RNG $k - \varepsilon$, and SST $k - \omega$. The coexistence of two fluids and the definition of an interface between them are treated using a volume method in Cartesian grids of several element sizes. An innovative way to deal with the outlet boundary condition that allows the size of the simulated domain to be reduced is presented. A case study is conducted for validation purposes ($FR_1 \sim 6.10$, $Re_1 \sim 3.5 \cdot 10^5$): several variables of interest are computed (sequent depths, efficiency, roller length, free surface profile, etc.) and compared to previous studies, achieving accuracies above 98% in all cases. In the light of the results, the model can be applied to real-life cases of design of hydraulic structures.

Key words | hydraulic jump, open channel, OpenFOAM, RANS, k-epsilon, k-omega

Arnau Bayon-Barrachina (corresponding author)
 Petra Amparo Lopez-Jimenez
 Department of Hydraulic and Environmental
 Engineering,
 Universitat Politècnica de València,
 Cami de Vera, s/n,
 46022 Valencia,
 Spain
 E-mail: arbabar@iiaa.upv.es

NOMENCLATURE

ANN	artificial neural network	h	water depth
SPH	smoothed particle hydrodynamics	H	hydraulic head
CFD	computational fluid dynamics	ΔH	energy drop
DNS	direct numerical simulation	η	hydraulic jump efficiency
LES	large eddy simulation	Γ	dimensionless water depth
RANS	Reynolds-averaged Navier–Stokes	k	turbulent kinetic energy
RNG	re-normalization group	ε	dissipation rate of turbulent kinetic energy
SST	shear stress transport	ω	specific dissipation rate of turbulent kinetic energy
FVM	finite volume method	μ	dynamic viscosity
VOF	volume of fluid	μ_t	turbulent eddy dynamic viscosity
u	freestream velocity	ν	kinematic viscosity
u_c	compression velocity	ν_t	turbulent eddy kinematic viscosity
u_τ	shear velocity	P_k	production of turbulent kinetic energy
p	pressure	P_b	effect of buoyancy
t	time	Y_M	effect of dilatation
q	inlet flow rate	S_k, S_ε	modulus of mean rate-of-strain tensor
x_i	Cartesian reference system component	$C_{1\varepsilon}, C_{2\varepsilon}, C_{3\varepsilon}$	model parameters
f_b	body forces	$\sigma_k, \sigma_\varepsilon$	model parameters
ρ	fluid density		

doi: 10.2166/hydro.2015.041

g	acceleration of gravity
Δx	mesh element size
C_μ	model parameter
α	water fraction in mesh element
Fr	Froude number
Re	water-height-based Reynolds number
Ma	Mach number
Cr	Courant number
w	channel width
x_1	position of hydraulic jump toe
x_2	position of roller end
x_3	position of hydraulic jump end
X	dimensionless longitudinal coordinate
L_j	length of hydraulic jump
L_r	length of roller
ξ_i	generic flow property of fluid “ i ”
Y	ratio of sequent depths
y^+	dimensionless wall distance
u^+	dimensionless velocity
E_i	error in variable i results
R^2	coefficient of determination
*	superindex relative to classical hydraulic jump
1	subindex relative to supercritical flow
2	subindex relative to subcritical flow

INTRODUCTION

Hydraulic jumps are the most used method to dissipate energy in hydraulic structures and they occur in water flows suddenly changing from a supercritical regime to subcritical. This virulent phenomenon is characterized by large pressure and velocity fluctuations, air entrainment and turbulent dissipation processes. It can therefore trigger erosion processes or scour on hydraulic structures with calamitous consequences. By definition, hydraulic jumps occur in gravity-driven flows when the Froude number (ratio of inertia to gravitational forces) drops below unity. The Froude number is a dimensionless number of fluid mechanics that, in horizontal channels at a given section i , can be computed as

Equation (1) indicates

$$Fr_i = \frac{u_i}{\sqrt{gh_i}} \quad (1)$$

where u_i is flow freestream velocity, g is acceleration of gravity, and h_i is water depth. Despite the fact that the nature of hydraulic jumps is essentially chaotic, within a certain range of approaching Froude numbers (Fr_1), this phenomenon can, to a certain extent, become stable. According to Hager (1992), stabilized hydraulic jumps occur when $Fr_1 \in [4.5, 9.0]$. Lower values produce transition jumps, characterized by low efficiencies and the formation of long waves of irregular period, whereas higher Froude numbers produce choppy jumps, which are unstable and prone to flow detachment and wave and spray formation. For this reason, most stilling basin design guidelines, such as that of the US Bureau of Reclamation (Peterka 1984), recommend aiming for Froude number values that produce stabilized hydraulic jumps.

Characterizing and analyzing this phenomenon is of paramount importance from both the technical and the environmental point of view. Hager (1992) and Chanson (2013) performed extensive reviews on the attempts to study this phenomenon throughout history. Some of these works focused on a theoretical comprehension of the characteristic features of the classical hydraulic jump. The so-called classical hydraulic jump is defined by Hager (1992) as the hydraulic jump that occurs in smooth horizontal prismatic rectangular channels. Resch & Leutheusser (1972) performed a thorough study on air entrapment and energy dissipation processes depending on the inlet flow characteristics. Gualtieri & Chanson (2007) extended this analysis to a wider range of inlet flow conditions.

Most of the studies performed up until now have focused on the analysis of easily-measurable external macroscopic variables using an experimental approach. This can be explained partially by the difficulty in measuring certain variables using non-intrusive acoustic and optical methods in highly aerated flows (Murzyn *et al.* 2005). However, since the 1970s, coinciding with the emergence of computational fluid dynamics (CFD), more and more studies on the hydraulic jump are conducted by means of numerical methods. In this regard, computational techniques brought a brand new

approach to water engineering modeling. For example, some hard-to-model phenomena, such as heat transfer (Thomas *et al.* 1990) or coupled biological processes (Muttill & Chau 2006), could be for the first time implemented thanks to numerical methods. This implied a whole paradigm shift and so the literature on this topic is vast: e.g., Ma *et al.* (2011), among others, modeled hydraulic jumps using different CFD techniques; Caisley *et al.* (1999) managed to reproduce accurately a hydraulic jump in a canoe chute using FLOW-3D; and Bombardelli *et al.* (2011) used this commercial software to successfully model a stepped spillway following a similar approach to that proposed here. Other approaches different from CFD have also been used in all kinds of water engineering applications, e.g., De Padova *et al.* (2013) successfully reproduced a hydraulic jump using smoothed particle hydrodynamics (SPH) techniques.

However, as Murzyn & Chanson (2009a) state, mathematical models still have problems in reproducing the physics of certain hydraulic phenomena, although they can contribute to their better comprehension. As Romagnoli *et al.* (2009) remark, an entire comprehension of the hydraulic jump internal flow features and turbulence structures has not been achieved so far. For Murzyn & Chanson (2009a), the main features of hydraulic jumps that have not been fully understood are the following: fluid mixing, bubble break-up and coalescence, free surface turbulent interactions, and wave formation and breaking processes.

Other authors have used a CFD approach to analyze hydraulic jumps in terms of shear stresses, potential erosion on stream boundaries and other more practical applications (Chanson 2000). Liu & Garcia (2008) published a model combining the CFD code OpenFOAM and the Exner Equation to model erosion and sedimentation processes in hydraulic structures using mesh deformation.

Nevertheless, despite the increasing number of publications in this area, in the numerical modeling of hydraulic structures and water engineering applications, deterministic models (e.g., CFD) are overwhelmed in number by their statistical counterparts, also known as 'black box' models (Chau *et al.* 2005). Thus, several authors used artificial neural networks (ANNs) to successfully predict the scour that occurs at hydraulic structures, such as bridge piers (Toth & Brandimarte 2011) or culvert outlets (Liriano & Day 2001). Taormina *et al.* (2012) and Cheng

et al. (2005) used ANN to successfully predict aquifer discharge processes. Farhodi *et al.* (2010) used fuzzy logic methods to analyze the scour downstream of stilling basins. Other authors used one-dimensional and two-dimensional approaches to reproduce the flow in similar geometries (Dewals *et al.* 2004). However, in hydraulic engineering, flows are generally strongly three-dimensional (Ahmed & Rajaratnam 1997). Therefore, the use of a fully three-dimensional deterministic model, such as proposed here, allows its application to a wider range of cases. Comparisons among different numerical methods to model hydrological and hydraulic phenomena can be found in the literature (Chen & Chau 2006; Wu *et al.* 2009).

The main goal of this work is to propose a fully three-dimensional CFD-based method to model classical hydraulic jumps using the open source platform OpenFOAM. The use of freely available open source codes allows a continuous community-based improvement of the model and avoids having to pay for costly software licenses. In this sense, other models can be found, also reproducing hydraulic jumps using OpenFOAM (Romagnoli *et al.* 2009; Witt *et al.* 2013). However, different outlet boundary conditions are herein presented. This change constitutes an asset as it allows the model boundaries to be brought closer to the hydraulic jump, which involves a significant saving of computational resources.

A case study is also conducted, where several variables of interest, such as hydraulic jump efficiency or roller length, are computed and compared to previous analytical and experimental studies. The sensitivity of the model to certain parameters, such as mesh element size, turbulence model used or boundary conditions, is assessed.

As discussed in later sections, given the accuracy of the results that have been achieved, this model is fully applicable to more complex geometries where hydraulic jumps have to be investigated, such as dam spillways, stilling basins and river rapids to name but a few.

METHODS

Geometry and mesh

In this model of the hydraulic jump, the geometry to discretize is rather simple: the domain consists of a prismatic

rectangular channel. For this discretization, two big categories of approaches are normally used, namely: unstructured and structured meshing.

Unstructured meshes are generally better suited for a selective refinement, so preventing the over-refinement of regions where no large gradients of property are expected (Kim & Boysan 1999). Besides, these meshes fit better into complex geometries, show less closure issues and their arbitrary topology makes automatizing the meshing process easier (Biswas & Strawn 1998). Nevertheless, none of these advantages applies to the case under study, as the geometry is extremely simple and no mesh refinement is required.

Some authors state that mesh non-orthogonality does not affect results as long as the skewness of its elements is kept low enough (Huang & Prosperetti 1994). Nevertheless, structured meshes tend to be more accurate than their unstructured counterparts *ceteris paribus* (Biswas & Strawn 1998). Besides, structured meshing algorithms are generally more straightforward to implement and faster to execute. According to Keyes *et al.* (2000) structured meshing algorithms present a more regular access to memory, which significantly reduces its latency. Also, as discussed below, in multiphase flows, topologically orthogonal meshes with their axis aligned with the fluid interface tend to show fewer numerical problems. For all these reasons, a static

structured rectangular hexahedral mesh is considered the best choice.

In some cases, meshes can be slightly refined in the vicinity of solid boundaries for accurately resolving the flow features in boundary layers, where larger property gradients occur. This may result in the formation of highly skewed elements, although this is not a real issue as long as orthogonality between the mesh axes and solid boundaries is ensured (Hirsch 2007). However, in this case, experience demonstrates that the mesh element size necessary to capture the freestream flow features is not smaller than that necessary to resolve the boundary layer features. As a consequence, cubic mesh elements of uniform size Δx are used throughout the entire domain (see Figure 1). The optimum mesh element size is highly case specific, so it is determined by means of a mesh sensitivity analysis.

Numerical model

Water level of open channel flows can be obtained by shallow wave approaches. However, they are not sufficient when modeling complex geometries as only a water depth value is assigned to each point on the streambed. In cases where a full description of the flow characteristics is necessary, resolving the Navier–Stokes Equations becomes a must.

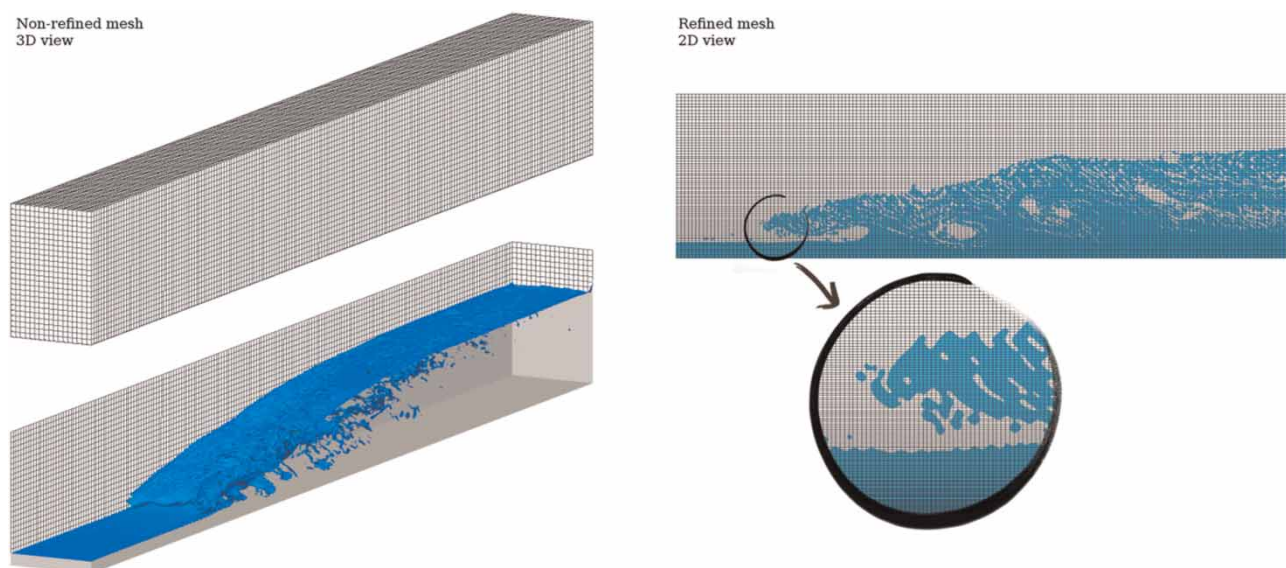


Figure 1 | Example of a mesh used in the model with zoom on the jump toe region.

Equations (2) and (3) are the Navier–Stokes Equations for mass and momentum conservation in their incompressible form. Unfortunately, their complete analytical resolution has not been achieved so far, so numerical models are necessary to approximate a solution to every problem involving fluid motion.

$$\nabla \bar{u} = 0 \quad (2)$$

$$\frac{\partial \bar{u}}{\partial t} + \bar{u} \cdot \nabla \bar{u} = -\frac{1}{\rho} \nabla p + \nu \nabla^2 \bar{u} + \bar{f}_b \quad (3)$$

where u is velocity, p is pressure, t is time, ρ is density, ν is kinematic viscosity, and f_b is body forces (gravity and surface tension). The flow is assumed to be incompressible in order to save computational resources and so density varying terms have been canceled out. This assumption can be done as Mach numbers (ratio of the flow velocity to the sound velocity) are below the commonly accepted threshold of $Ma < 0.3$ (Young *et al.* 2010).

A wealth of algorithms has been developed to approximate numerically the Navier–Stokes Equations during the last decades. Nevertheless, none of them constitutes a perfect solution as their performance is highly case specific. Indeed, this is a topic extensively discussed in the literature (Jang *et al.* 1986; Barton 1998). It is important to remark that the algorithm performances are generally assessed in terms of computation requirements and stability as, eventually, all algorithms should converge to a similar solution. The most widely used algorithm to execute stationary simulations and normally the default option in all CFD codes is the SIMPLE algorithm (Patankar & Spalding 1972). Several improvements to its original implementation, such as SIMPLER or SIMPLEC, have been made since the model was developed. One of the most used variations is the PISO algorithm (Issa 1985). However, problems may arise when dealing with multiphase flows where phase changes are abrupt or the density difference is large (Brennan 2001). To overcome this issue, an algorithm was developed combining the best features of SIMPLE and PISO; the so-called PIMPLE (OpenFOAM 2011). This algorithm merges the outer-correction tools of SIMPLE with the inner-corrector loop of PISO in order to achieve a more robust and generalizable pressure-velocity coupling (Rodrigues *et al.* 2011).

Hence, the PIMPLE algorithm is used here as a good compromise between computation requirements and stability. This algorithm is implemented in OpenFOAM, a freely available open source platform constituted by all sorts of C++ applications and libraries to solve all kinds of continuum mechanics problems (Weller *et al.* 1998). This code uses a tensorial approach and object-oriented programming techniques following the widely known finite volume method (FVM), first used by McDonald (1971). An in-depth explanation of the algorithm implementation can be found in the PhD theses of Jasak (1996), Ubbink (1997) and Rusche (2002).

Water surface tracking

The coexistence and interaction of several fluids and the way that the interface among them is defined is of paramount importance in numerical modeling of multiphase flows. Complex algorithms must be developed to model this phenomenon, whose stability and accuracy have a strong influence on the model final results (Hyman 1984). Surface tracking methods fall into two families of approaches, namely: the surface methods and the volume methods. On the one hand, surface methods explicitly define the free interface either using a Lagrangian approach, i.e., tracking a set of surface marker particles (Daly 1969), or using a Eulerian approach, i.e., defining functions that determine the free surface position (Osher & Sethian 1988). These methods present topology issues when dealing with highly deformed flows and breaking surfaces. For this reason, they are not considered appropriate to model hydraulic jumps.

On the other hand, volume methods adapt better to this kind of phenomena, but do not define a neat flow interface explicitly. Instead, a surface tracking method has to be implemented in the model. Some models use a Eulerian–Lagrangian approach (particles on fluid methods) combining a Eulerian flow resolution with particle tracking (Harlow & Welch 1965). However, in three-dimensional models, the large number of necessary particles makes the computational cost of this approach unaffordable. For this reason, an entirely Eulerian approach is used in the present model. This kind of approach proved to be more computationally efficient as it only has to deal with a single

variable value per mesh element (Ubbink 1997). This variable is an indicator property (α) expressing the proportion of one fluid or another that every mesh element contains. Its distribution throughout the domain is modeled by approximating an additional convection transport equation (Equation (4)). This implies considering both fluids, A and B, as a single multiphase fluid, whose properties are treated as weighted averages according to the fraction occupied by one fluid or another in each mesh element (see Equation (5)). This results in a set of α values between 0 and 1 throughout the entire modeled domain but no clear water-air interface is defined a priori.

$$\frac{\partial \alpha}{\partial t} + \nabla \cdot (\bar{u}\alpha) = 0 \quad (4)$$

$$\xi = \xi_a \alpha + \xi_b (1 - \alpha) \quad (5)$$

where α is fluid fraction, u is velocity, t is time, and ξ represents a flow generic property. As regards the method used to clean up the misty zones and so define a neat interface, a wealth of approaches has been developed during the last decades. The traditional line techniques, such as SLIC (Noh & Woodward 1976), PLIC (Youngs 1984) or FLAIR (Ashgriz & Poo 1991), provided the first viable solutions to the surface definition issue in volume methods. However, they present problems of generalization to unstructured meshes. The donor-acceptor methods, such as the original implementation of the VOF (Hirt & Nichols 1981), have been widely used in the past, but they are prone to show false interface deformation issues.

In the present model, an interface compression algorithm is implemented in order to overcome the aforementioned issues. This method adds an extra term in the left-hand side of Equation (4): $\nabla \cdot (\bar{u}_c \alpha [1 - \alpha])$, where \bar{u}_c is a compression velocity with normal direction to the fluid interface. Multiplying \bar{u}_c by $\alpha [1 - \alpha]$ ensures that it will only affect those regions where the flow fraction is close to 0.5 (Rusche 2002).

Flow aeration

The aeration of a water flow modifies its volume, depth, density, and compressibility (Carvalho 2002), thus affecting

the momentum transfer. It also reduces the scour risk by cavitation (Bung & Schlenkhoff 2010) and the shear stresses on the channel boundaries (Chanson 1994). Therefore, this is a phenomenon of paramount importance in highly aerated flows such as hydraulic jumps, bores, breaking waves, etc. Unfortunately, surface tracking methods per se cannot reproduce phenomena smaller than the mesh element size, such as bubbles and droplets, or the entrainment of large amounts of air (Toge 2012). To overcome this issue, additional air entrainment models are implemented. In low-aerated flows, a Eulerian-Lagrangian approach is possible, where the Navier-Stokes Equations are resolved and air is treated as a set of discrete particles. With larger air fractions, this approach is no longer possible and an entirely Eulerian method is necessary. Eulerian-Eulerian approaches yield better results than their Eulerian-Lagrangian counterparts in the latter case. Despite the fact that they require longer computation times, in entirely Eulerian approaches, buoyancy, drag and lift forces are taken into account. For this reason, in the case of the model proposed here, a Eulerian-Eulerian approach is implemented.

Turbulence

Turbulence features can either be resolved down to their lowest scales (direct numerical simulation (DNS)), if the mesh is accordingly fine, or modeled under a wealth of different approaches. Despite the application of DNS models to multiphase flows having been reported (Borue *et al.* 1995), in most cases turbulence features are partial or completely modeled in common engineering applications.

Large eddy simulation (LES) approaches are also feasible to model multiphase flows. Nevertheless, the most used technique is the Reynolds-averaged Navier-Stokes (RANS). In these models, the so-called Reynolds stresses are averaged to find a closure to the Navier-Stokes Equations. To do so, additional transport equations are implemented in order to model the behavior of flow turbulence. Among the available models, the performance of three of the most used is here studied. The assessed models are the Standard $k - \epsilon$ (Lauder & Sharma 1974), the RNG $k - \epsilon$ (Yakhot *et al.* 1992) and the SST $k - \omega$

(Menter 1993). The Standard $k - \varepsilon$ model has been widely used in this kind of applications (López & Garcia 2001). Its formulation is depicted in Equations (6) and (7)

$$\frac{\partial}{\partial t}(\rho k) + \frac{\partial}{\partial x_i}(\rho k u_i) = \frac{\partial}{\partial x_j} \left[\left(\mu + \frac{\mu_t}{\sigma_k} \right) \frac{\partial k}{\partial x_j} \right] + P_k + P_b - \rho \varepsilon - Y_M + S_k \quad (6)$$

$$\frac{\partial}{\partial t}(\rho \varepsilon) + \frac{\partial}{\partial x_i}(\rho \varepsilon u_i) = \frac{\partial}{\partial x_j} \left[\left(\mu + \frac{\mu_t}{\sigma_\varepsilon} \right) \frac{\partial \varepsilon}{\partial x_j} \right] + C_{1\varepsilon} \frac{\varepsilon}{k} (P_k + C_{3\varepsilon} P_b) - C_{2\varepsilon} \rho \frac{\varepsilon^2}{k} + S_\varepsilon \quad (7)$$

where k is turbulent kinetic energy, ε is the dissipation rate of k , t is time, ρ is density, x_i is the coordinate in the i axis, μ is dynamic viscosity, μ_t is turbulent dynamic viscosity, P_k is production of turbulent kinetic energy, P_b is the buoyancy effect, Y_M is the dilatation effect, and S_k and S_ε are the moduli of mean rate-of-strain tensor. The remaining terms, (C_μ , $C_{1\varepsilon}$, $C_{2\varepsilon}$, $C_{3\varepsilon}$, σ_k , and σ_ε) are model parameters that, in the Standard $k - \varepsilon$ model, are 0.09, 1.44, 1.92, -0.33 , 1.0, and 1.3, respectively.

The RNG $k - \varepsilon$ model formulation differs from that of the Standard $k - \varepsilon$, essentially, in the values of the aforementioned parameters. These changes seem to improve the model results to such an extent that, according to Bradshaw (1996), the RNG $k - \varepsilon$ is the most used model in hydraulic applications.

Several authors claim that $k - \varepsilon$ models are not suitable to model large adverse-pressure gradient flows (Menter 1993; Wilcox 1998). To overcome this issue, $k - \omega$ models were first introduced by Wilcox (1998). Their implementation is significantly different from that of $k - \varepsilon$, as the dissipation rate of turbulence kinetic energy (ε) is not modeled. Instead, a transport equation for its relative value ($\omega = \varepsilon/k$) is implemented. Among them, the SST $k - \omega$ (Menter 1993) proved to perform better than the Standard and the baseline (BSL) $k - \omega$.

The suitability of one model or another is highly case specific and differences from using one model or another are normally remarkable. Hence, in order to determine which model performs best at a reasonable computational cost, a sensitivity analysis is conducted. To do so, simulations are run using the three RANS models discussed above *ceteris paribus*.

Boundary conditions

The boundary conditions imposed to force the hydraulic jump to occur consist of a supercritical flow inlet, a subcritical flow outlet, smooth bottom and side walls and an upper open air patch (see Figure 2). At the inlet, in order to fulfill the desired Froude number, a water depth (h_1) and a potential velocity profile are imposed using a Dirichlet boundary condition. The pressure value is defined as a null von Neumann boundary condition, so forcing a hydrostatic profile. As regards the inlet variables of the RANS model, i.e., k , ε , and ω , they cannot be directly estimated from measurements. Instead, they are set to an arbitrary low value and a short initial stretch of channel is added in order for the flow to develop while approaching the hydraulic jump.

As regards the outlet, the subcritical water height that forces the hydraulic jump to occur within the simulated domain (h_2) has to be imposed. This variable has to be obtained by iteratively testing values until the resulting hydraulic jump remains stable within the domain. Normally, a subcritical water height and a hydrostatic profile should be imposed at the outlet by means of a Dirichlet water level boundary condition. This, combined with a null Von Neumann boundary condition for velocity, would allow the flow to leave the domain freely. However, the imposition of a subcritical outlet by means of this approach in OpenFOAM appears to cause stability issues.

Indeed, to the knowledge of the authors, all cases of hydraulic jump simulations using OpenFOAM reported in the literature, such as Romagnoli *et al.* (2009) or Witt *et al.* (2013), have had to bypass this issue. To do so, they added an additional stretch of channel with an obstacle on the streambed, such as a step, a gate or a ramp, followed by a conventional free outlet.

In the present model, this problem is overcome by imposing a velocity profile at the outlet and so letting the hydrostatic profile develop, as is done at the inlet boundary condition. Assuming mass conservation, this approach univocally produces a given water height. This avoids having to model the aforementioned extra stretch of channel. As this implies bringing the boundary conditions closer to the phenomenon under study, comparative simulations are run in order to assess the model sensitivity to the boundary condition type.

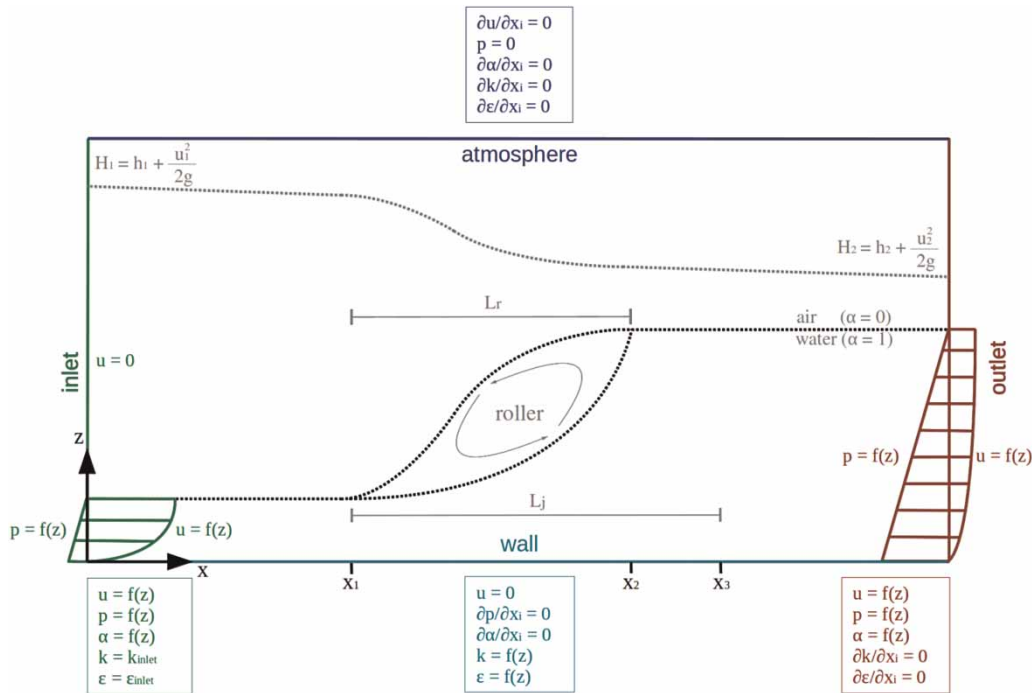


Figure 2 | General scheme of a hydraulic jump and boundary conditions used in the model.

A no-slip condition is imposed at the walls and roughness is not considered (Hager 1992). An atmospheric boundary condition is imposed at the top of the channel to allow fluids to enter and leave the channel. This is achieved by imposing a null Von Neumann condition to all variables except for pressure, which is set to zero (atmospheric pressure). Figure 2 summarizes the model's boundary conditions and some of its most relevant variables.

Wall treatment

The way the boundary layer is treated is of paramount importance in fluid modeling. Von Karman (1930) established a universal law of the wall which defines the flow velocity profiles in the boundary layer. Velocity (u) and distance to wall (y) are adimensionalized using the shear velocity (u_τ) and the viscosity (ν), respectively

$$y^+ = y \frac{u_\tau}{\nu} \quad (8)$$

$$u^+ = \frac{u}{u_\tau} \quad (9)$$

The lowest y^+ regions, the so-called viscous sublayer (Schlichting & Gersten 2000), are characterized by large gradients of velocity and other properties and the predominance of viscous effects. To avoid having to resolve these regions, wall functions are often used in CFD models. These functions are imposed as boundary conditions on solid patches to avoid the use of excessively fine meshes, with the subsequent saving of computational resources. As a consequence, the model mesh has to be refined so that the y^+ coordinate of the center of all mesh elements in touch with solid walls be somewhere between the buffer and the logarithmic sublayers ($y^+ \sim 30$). It is important not to over-refine meshes when using wall functions. If this happens, wall functions will be modeling the viscous sublayer, whereas the model itself would be resolving the flow in this region. This controversy may cause finer meshes to yield less accurate results.

In terms of accuracy, the best choice would be to use a low Reynolds number model with no wall function at all. However, this implies refining the mesh to such an extent that the computational cost may become unaffordable. There is a vast literature on improvements to the original implementation of wall functions, such as Johnson &

Launder (1982), but most of the solutions proposed have not been adopted by most CFD codes. This is due to the fact that, despite these approaches being valid from a theoretical point of view, many of them may cause stability issues (Blocken *et al.* 2007).

In this research, a high Reynolds number wall function for RANS models and smooth solid surfaces is implemented. The boundary layer in a case of these characteristics is likely to be slightly skewed (Taylor 1959). Nevertheless, as the flow mainstream direction is completely longitudinal, a bi-dimensional wall function is used for the sake of simplicity.

Discretization schemes

As regards the discretization schemes used to make the CFD model partial differential equations numerically approximable, a good choice always must be a good compromise between accuracy and stability. In spatial discretization, upwind models are generally preferred to downwind approaches as the latter tend to show severe stability issues. Compared to central differencing schemes, upwind approaches are slower, but also less diffusive and so more accurate. The problem is that, when abrupt property gradients occur, the latter schemes may require limiters in order to prevent spurious oscillations (Blazek 2005). Once limited, upwind schemes, such as Van Leer's (1982), are very appealing to discretize abruptly varied properties. The only drawback is that, when limited, these schemes become first-order accurate.

In the present model, the fluid fraction divergence terms (α) are discretized using a limited Van Leer approach due to its abruptly variable nature. In the case of the RANS model variables, divergence terms are discretized using an unlimited upwind approach as they are less prone to cause stability issues. The velocity divergence terms are discretized using a central differencing scheme in order to avoid possible instabilities as well as to reduce computation times. Also, all gradient and interpolation terms of the model are discretized using this approach. Gaussian standard FVM is used to interpolate the variable values from cell centers to their faces. To save computational resources, as this mesh is strictly Cartesian, no orthogonality corrector is applied.

As regards the discretization of time derivatives, explicit schemes tend to be computationally lighter than their implicit homologues. However, they are also more unstable, especially, in simulations with skewed meshes (Blazek 2005) or when solving RANS equations (Lafon & Yee 1992). Therefore, implicit time discretization schemes are preferred in this model. This implies slightly longer computation times and eventual accuracy problems due to phenomena such as wave damping (Casulli & Cattani 1994), but also higher stability. Hence, a first-order accurate bounded implicit Euler scheme is used to discretize time derivative terms.

The time step length is variable throughout the simulation resolution process. Its value is automatically updated after every time step in order to ensure that the maximum Courant number never overcomes a threshold of $Cr < 0.75$, ensuring convergence and stability of simulations.

Postprocessing

The variables analyzed and compared to previous studies are now discussed. The reference values to which model results are compared are denoted by a superscript asterisk (*).

The sequent depth (Y), i.e., the ratio of subcritical to supercritical flow depth (h_1 and h_2 , respectively), is a characteristic parameter of hydraulic jumps. According to Belanger (1841), it can be estimated as a function of the approaching Froude number using a series of simplifications of the Momentum Equation. Nevertheless, in channels of low aspect ratio (h_1/w), side walls can play an important role and this equation is no longer valid. In this regard, Murzyn & Chanson (2008) claim that scale effects can play an important role in channels of aspect ratio above 0.1. To overcome this issue, Hager & Bremen (1989) proposed the following approach introducing the Blasius Equation to account for side wall friction effects, resulting

$$Y^* = \frac{h_2}{h_1} = \frac{1}{2} \cdot \left[\sqrt{1 + 8 \cdot Fr_1^2} - 1 \right] \cdot \left[1 - 0.7 [\log Re_1]^{-2.5} e^{Fr_1/8} \right] \cdot \left[1 - 3.25 \frac{h_1}{w} e^{Fr_1/7} (\log Re_1)^{-3} \right] \quad (10)$$

where h_1 is supercritical water depth, w is channel width, Fr_1 is approaching Froude number, and Re_1 is the

supercritical height-based Reynolds number. Another relevant variable of hydraulic jumps is the roller length (L_r), i.e., the stretch right downstream of the jump toe where water recirculation occurs and most of the air entrainment occurs. Some authors, such as Murzyn & Chanson (2009b), define the roller length as the hydraulic jump region over which the water height increases monotonically. However, in this study the stagnation point is used as a criterion to delimit the roller end. Hager (1992) proposes the following expression to estimate the roller length

$$L_r^* = -12 h_1 + 100 \cdot h_1 \cdot \tan h \frac{Fr_1}{12.5} \quad (11)$$

The efficiency of hydraulic jumps is defined as the ratio of the energy drop to the upstream hydraulic head. These variables are obtained from Equation (12) as a function of water height (h_i), flow velocity (u_i) and acceleration of gravity (g). Equation (13) represents how hydraulic jump efficiency is computed. According to Hager & Sinniger (1985), in classical hydraulic jumps, the latter variable can be estimated as a function of the approaching Froude number using Equation (14)

$$H_i = h_i + \frac{u_i^2}{2g} \quad (12)$$

$$\eta = \frac{\Delta H}{H_1} = \frac{H_1 - H_2}{H_1} \quad (13)$$

$$\eta^* = \left(1 - \frac{\sqrt{2}}{Fr_1}\right)^2 \quad (14)$$

Water surface levels are a variable of paramount importance in the design of hydraulic structures. Its accurate estimation is crucial for a proper stilling basin design that avoids bank overflows. In the present work, the average water surface levels are numerically computed and compared to the expression by Bakhmeteff & Matzke (1936)

$$\Gamma^*(x) = \tan h(1.5 \cdot X) \quad (15)$$

where $\Gamma(x)$ is water level at x (h_i), non-dimensionalized following Equation (16), where h_1 and h_2 are the

supercritical and subcritical water levels, respectively. The variable X is the non-dimensional longitudinal coordinate (x), computed as a function of x_1 (hydraulic jump toe position) and x_2 (roller end position) as Equation (17) indicates

$$\Gamma(x) = \frac{h_i - h_2}{h_1 - h_2} \quad (16)$$

$$X = \frac{x - x_1}{x_2 - x_1} \quad (17)$$

The nature of hydraulic jumps is highly chaotic and unstable, and so most of its characteristic variables show a quasi-periodic behavior (i.e., patterns can eventually be observed, but their characteristic period is not constant). For this reason, it is crucial to extend sufficiently the simulation time to avoid bias in the results. The authors observe that stability of the solution can be assumed when the residuals of all the variables drop below the 10^{-3} threshold and the water content of the whole modeled channel stays stable during at least 10 s.

Case study

A case study is conducted for validation purposes. The simulated case consists of a prismatic rectangular channel of dimensions $6.00 \times 0.50 \times 0.75$ m (length, width, and height). The inlet flow is $q = 0.177 \text{ m}^3/\text{s}$ and the supercritical depth is $h_1 = 0.070$ m. Hence, the inlet velocity is $u_1 = 5.057$ m/s. The subcritical depth is obtained following the procedure discussed above in this section. The density and the kinematic viscosity are $\rho = 1,000 \text{ kg/m}^3$ and $\nu = 10^{-6} \text{ m}^2/\text{s}$.

The approaching Froude and Reynolds numbers are $Fr_1 = 6.125$ and $Re_1 = 3.54 \cdot 10^5$. A case of Fr_1 between 6 and 7 is considered optimum for model validation as it corresponds to the middle of the range of Fr_1 values recommended by the US Bureau of Reclamation (Peterka 1984). This approaching Froude number is assumed to be representative of the behavior of all stabilized hydraulic jumps, as described by Hager (1992).

As discussed above in this section, a mesh, turbulence and boundary condition model sensitivity analysis is conducted. Each of the turbulence models mentioned above

(Standard $k - \epsilon$, RNG $k - \epsilon$, and SST $k - \omega$) is tested in four different sized meshes. The mesh element sizes assessed are 7.00, 7.50, 7.78, and 8.75 mm, which means meshes of 6.511, 6.360, 4.737, and 3.467 million cells, respectively. To fulfill the wall treatment function hypothesis, it is checked in all cases that the y^+ coordinate mostly remains in the range of values between 20 and 70.

RESULTS AND DISCUSSION

Graphic analysis

A visual analysis of the model results leads to the conclusion that a stabilized hydraulic jump is reached (see Figure 3). All the characteristic features of this kind of jump described by Hager (1992) can be observed, namely: compact and stable appearance, low wave generation, gradual bubble deaeration, vortex formation within the roller, no flow separation in the entering jet, etc. Figure 3 shows how, downstream of the hydraulic jump where bubble deaeration occurs, hydrostatic pressure and velocity profiles quickly reappear. Also, the deaeration of large bubbles can be observed

throughout the region where streamlines cut the water free surface. Downstream of that, despite waves and small bubbles not disappearing completely, the characteristics of developed flows can be observed again.

Figure 3 shows the wide span of bubble sizes that occur in the turbulent shear and the recirculation region of hydraulic jumps. Chanson (1994) found experimentally that the range of bubble sizes in hydraulic jumps can extend over several orders of magnitude. The average bubble size rapidly decreases longitudinally. This is due to the fact that large bubbles cannot stay long in the recirculation region as shear stresses break them up and buoyancy forces tend to expel them (Babb & Aus 1981). Small bubbles are not deaerated so quickly. Indeed, they can be dragged by advection forces throughout long distances until buoyancy finally expels them.

Sensitivity analysis

As discussed above, a mesh, turbulence, and boundary condition model sensitivity analysis is conducted in order to determine the best combination to achieve accurate results at an affordable computational cost.

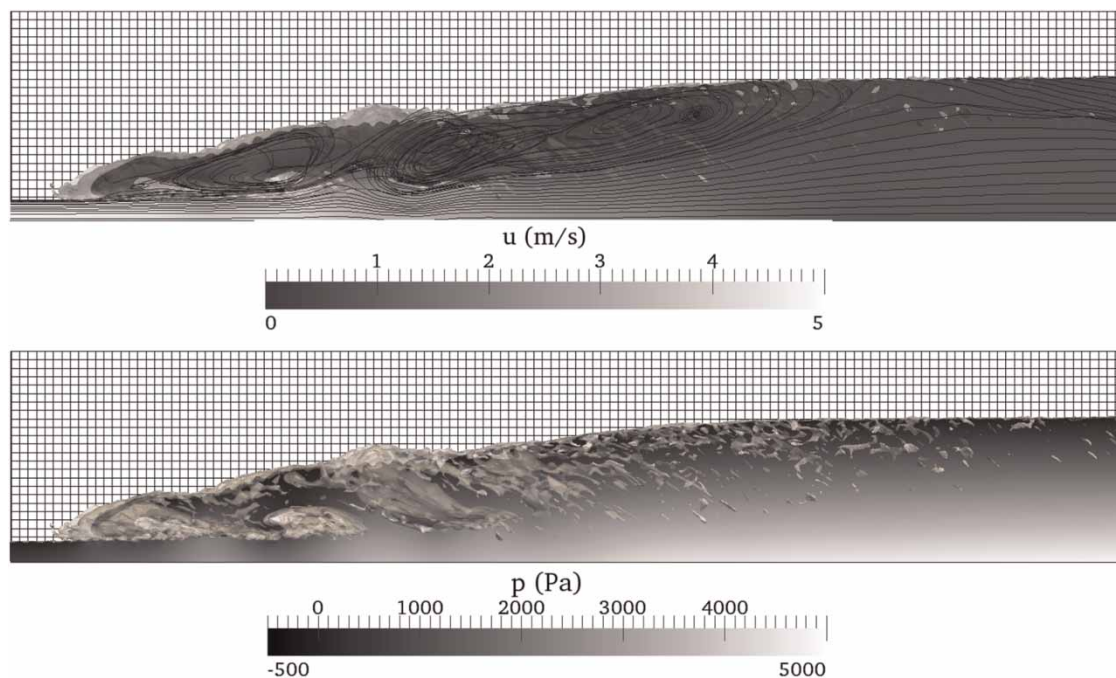


Figure 3 | Instant representation of bubble formation and velocity and pressure fields.

As regards the outlet boundary condition used, Figure 4 shows examples of hydraulic jumps simulated using both approaches. A closer comparison between them shows no significant effect on the model outcome accuracy. Although an instant comparison, such as that in Figure 4, shows differences in water level profile and flow aeration, these differences completely disappear when results are averaged. No undesirable effects, such as wave formation, occur despite the new approach implying bringing the boundary conditions significantly closer to the phenomenon under study. The domain reduction achieves computation times up to 30% shorter in some cases.

The three tested turbulence models show small influence on the sequent depth (Y) estimations. The most accurate model is the RNG $k-\varepsilon$, followed by the SST $k-\omega$ and the Standard $k-\varepsilon$, although all errors are below 4%. The inflexion point in the accuracy of the all

models can be clearly observed at a mesh size of 7.50 mm, thus the RNG $k-\varepsilon$ model with 7.50 mm size mesh is the most accurate approach.

As regards the estimation of roller lengths, the SST $k-\omega$ model appears not to be able to capture accurately this variable. The Standard $k-\varepsilon$ model shows a reasonable accuracy (all errors are below 6%) and low sensitivity to mesh size, which is an asset. However, RNG $k-\varepsilon$ is even more accurate and shows a perfect monotonically decreasing trend in errors, although the model is also highly sensitive to mesh size variations. The RNG $k-\varepsilon$ model with 7.00 mm size mesh appears to be the most accurate approach in the roller length prediction.

The prediction of the hydraulic jump efficiency achieves the highest accuracy values, with the error of all models below 2%. The Standard $k-\varepsilon$ with 7.00 mm size mesh is the most accurate (0.1%) but, as observed in Figure 5, the

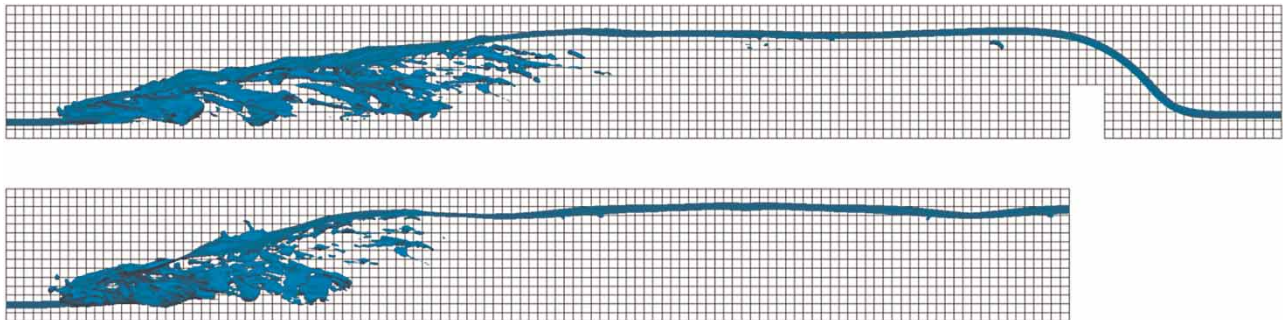


Figure 4 | Instant comparison of hydraulic jumps simulated using two different outlet boundary conditions: the traditional approach (top) and a new approach (bottom).

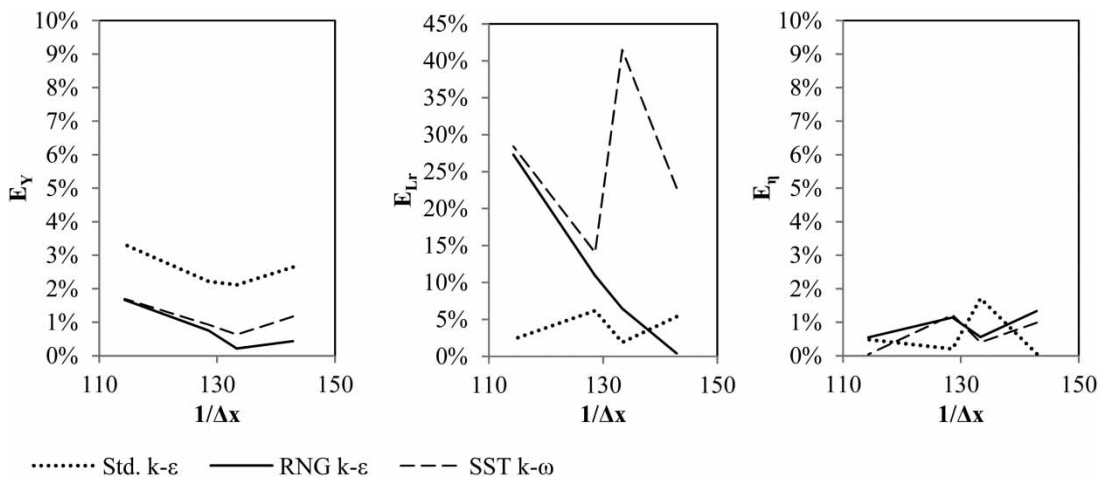


Figure 5 | Mesh and turbulence model sensitivity analysis – relative errors in the computation of sequent depths (Y), roller lengths (L_r), and hydraulic jump efficiency (η) with respect to bibliography.

sensitivity of this variable to the model parameters is extremely low.

All further discussion on the results and model validation is exclusively conducted using the results of the RNG $k - \varepsilon$ model with 7.00 mm size mesh. This is because this approach achieved the most accurate results in the most sensitive variable (i.e., roller length) while being reasonably accurate in the prediction of the less sensitive variables.

Quantitative analysis

The mean subcritical water depth obtained from the CFD model is $h_2 = 0.553$ m, which leads to a mean ratio of sequent depths of $Y = 7.916$. Following Equation (10), the reference value for this variable in classical hydraulic jumps is $Y^* = 7.951$. This means that the model yields a value approximately 0.4% lower than that obtained using the expression proposed by Hager & Bremen (1989).

Regarding the mean roller length, the model yields a mean value of $L_r = 2.320$ m, being $L_{r,*} = 2.330$ m the value computed using Equation (11). This implies an underestimation of only 0.4%. The accuracy in the prediction of this variable is crucial, as the largest shear stresses on the

streambed generally occur within this stretch. In stilling basin design cases, this can be very helpful in order to determine the region of the structure that must be protected against scour.

Following Equation (13), the mean efficiency of the hydraulic jump is $\eta = 58.2\%$. This agrees with the result obtained from Equation (14) (Hager & Sinniger 1985), which estimates an efficiency of 59.0%, with only a 1.3% error. The good agreement in the computation of these three variables compared to other works is depicted in Figure 6.

The comparison of water surfaces to previous studies (Bakhmeteff & Matzke 1936) proves the consistency of the model presented herein. Figure 7 shows the mean water levels computed using the three different turbulence models. The most accurate RANS model is the Standard $k - \varepsilon$ ($R^2 = 99.6\%$), followed by the RNG $k - \varepsilon$ ($R^2 = 99.2\%$) and the SST $k - \omega$ ($R^2 = 98.5\%$). It can be deduced from the above that turbulence models exert very little effect on the water free surface definition in average terms.

Nevertheless, an instant observation of the evolution of this variable shows that SST $k - \omega$ models produce a more unstable and bursting water surface with high bubble and

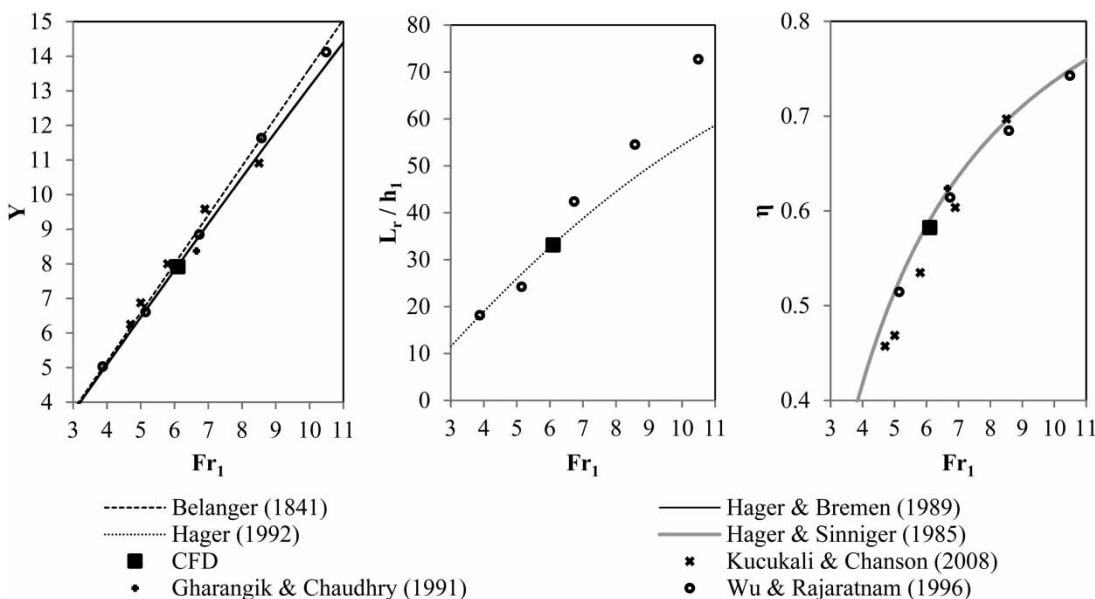


Figure 6 | CFD model result comparison with previous analytical and experimental works. The analyzed variables are: sequent depth (Y), roller length (L_r), and hydraulic jump efficiency (η).

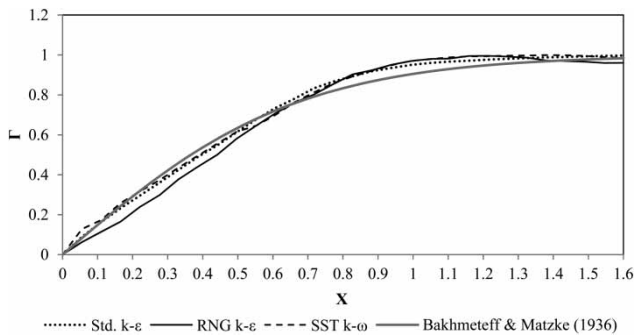


Figure 7 | Water free surface level according to turbulence model used compared to previous studies.

spray production. Both $k - \varepsilon$ models produce smoother surfaces, even though the Standard $k - \varepsilon$ is also the model that yields a more uniform and less turbulent free surface.

Table 1 shows the accuracy of the model according to the variable predicted using the most accurate approach (RNG $k - \varepsilon$ turbulence model with 7.0 mm size mesh). It can be deduced from such accurate results that the model proposed herein is validated and so can be applied to real-life design cases.

CONCLUSIONS

A three-dimensional CFD model for transient multiphase incompressible flow is developed in order to predict the behavior of classical hydraulic jumps. After analyzing the effects on the results of several model parameters, such as the mesh refinement degree, the turbulence model or the boundary conditions, a stable hydraulic jump and accurate results are obtained. The model is built using exclusively free open source code, which implies avoiding expensive software licenses. Also, a problem found in other cases where OpenFOAM is used to model hydraulic jumps is

Table 1 | RNG $k - \varepsilon$ with 7.0 mm mesh model outcome and analytical/experimental data comparison

Variable	Model output	Reference result	Accuracy
Sequent depth (Y)	7.916	7.951	99.6%
Roller length (L_r)	2.320 m	2.330 m	99.6%
Efficiency (η)	58.2%	59.0%	98.7%
Surface (Γ)	—	—	99.2%

addressed and solved. This problem involves the outlet boundary condition, where an additional stretch of channel with an obstacle attached to its bottom has to be added in order to force the subcritical flow to occur. Using the approach proposed in this paper, this additional stretch of channel can be removed by modifying the outlet boundary condition, with the subsequent saving of computational resources (up to 30% in some cases) with no effects on the model accuracy whatsoever.

A case study of approaching Froude number $Fr_1 = 6.125$ is simulated and the results are compared to previous studies of similar characteristics, such as that of Hager (1992) and Wu & Rajaratnam (1996). The roller length appears to be the most sensitive variable to model parameters (the SST $k - \omega$ is not even able to capture this magnitude). Some hydraulic jump variables are better reproduced in comparison with other authors' results, such as the sequent depth (error of only 0.4%), whereas others show lower accuracies, e.g., the hydraulic efficiency (error of 1.3%). The water free surface is accurately reproduced by all turbulence models in average terms, the Standard $k - \varepsilon$ being the most accurate approach. An instant observation of the results shows that the SST $k - \omega$ model surface looks more turbulent than its $k - \varepsilon$ counterparts. In any case, the accuracy of all of the variables analyzed is above 98% in all cases so the model can be considered validated.

In the light of the results, the model is ready to be applied to real-life design cases, such as dam stilling basins, stepped spillways, river rapids, meandering channels, etc. As discussed above, the most accurate turbulence model in this kind of application is the RNG $k - \varepsilon$, although very fine meshes are necessary to ensure good performance and this model proved to be slightly slower than the Standard $k - \varepsilon$. The latter turbulence model could be a better choice in cases where low computational requirements are preferred without compromising accuracy excessively. The Standard $k - \varepsilon$ also proved capable of reproducing the average water free surface slightly better.

As for future work, the model is currently being used in similar applications, both theoretical, such as triangular, circular and radial hydraulic jumps, and real-life cases. Also, the air entrainment and concentration distribution in hydraulic jumps is being studied using this model and compared with experimental data.

ACKNOWLEDGEMENTS

This research was conducted thanks to the funding provided by the VALi+D R&D Program of the Generalitat Valenciana (Spain). It would not have been possible without the contribution of Daniel Valero and Beatriz Nacher of the Hydraulics Laboratory of the School of Civil Engineering (Universitat Politècnica de València).

REFERENCES

- Ahmed, F. & Rajaratnam, N. 1997 **Three-dimensional turbulent boundary layers: a review**. *Journal of Hydraulic Research* **35**, 81–98.
- Ashgriz, N. & Poo, J. 1991 **FLAIR: flux line-segment model for advection and interface reconstruction**. *Journal of Computational Physics* **93**, 449–468.
- Babb, A. & Aus, H. 1981 **Measurements of air in flowing water**. *Journal of Hydraulics Division ASCE* **107**, 1615–1630.
- Bakhmeteff, B. A. & Matzke, A. E. 1936 **The hydraulic jump in terms of dynamic similarity**. *Transactions ASCE* **100**, 630–680.
- Barton, I. 1998 **Comparison of SIMPLE-and PISO-type algorithms for transient flows**. *International Journal for Numerical Methods in Fluids* **26**, 459–483.
- Belanger, J. 1841 *Notes sur l'Hydraulique*. Ecole Royale des Ponts et Chaussées, Paris, France.
- Biswas, R. & Strawn, R. C. 1998 **Tetrahedral and hexahedral mesh adaptation for CFD problems**. *Applied Numerical Mathematics* **26**, 135–151.
- Blazek, J. 2005 *Computational Fluid Dynamics: Principles and Applications*. Elsevier, Amsterdam.
- Blocken, B., Stathopoulos, T. & Carmeliet, J. 2007 **CFD simulation of the atmospheric boundary layer: wall function problems**. *Atmospheric Environment* **41**, 238–252.
- Bombardelli, F. A., Meireles, I. & Matos, J. 2011 **Laboratory measurements and multi-block numerical simulations of the mean flow and turbulence in the non-aerated skimming flow region of steep stepped spillways**. *Environmental Fluid Mechanics* **11**, 263–288.
- Borue, V., Orszag, S. & Staroslesky, I. 1995 **Interaction of surface waves with turbulence: direct numerical simulations of turbulent open channel flow**. *Journal of Fluid Mechanics* **286**, 1–23.
- Bradshaw, P. 1996 **Understanding and prediction of turbulent flow**. *International Journal of Heat and Fluid Flow* **18**, 45–54.
- Brennan, D. 2001 *The Numerical Simulation of Two-Phase Flows in Settling Tanks*. Imperial College of Science, Technology and Medicine, London, UK.
- Bung, D. & Schlenkhoff, A. 2010 **Self-aerated skimming flow on embankment stepped spillways: the effect of additional micro-roughness on energy dissipation and oxygen transfer**. In: *1st IAHR European Congress*, May, Edinburgh, UK.
- Caisley, M. E., Bombardelli, F. A. & Garcia, M. H. 1999 **Hydraulic model study of a Canoe Chute for low-head Dams in Illinois (HES 63)**. *Hydraulic Engineering Series* **63**. <http://hdl.handle.net/2142/12214>.
- Carvalho, R. 2002 *Acções hidrodinâmicas em estruturas hidráulicas: modelação computacional do ressalto hidráulico*. Universidade de Coimbra, Portugal.
- Casulli, V. & Cattani, E. 1994 **Stability, accuracy and efficiency of a semi-implicit method for three-dimensional shallow water flow**. *Computers & Mathematics with Applications* **27**, 99–112.
- Chanson, H. 1994 **Drag reduction in open channel flow by aeration and suspended load**. *Journal of Hydraulic Research* **32**, 87–101.
- Chanson, H. 2000 **Boundary shear stress measurements in undular flows: application to standing wave bed forms**. *Water Resources Research* **36**, 3063–3076.
- Chanson, H. 2013 **Hydraulics of aerated flows: qui pro quo?** *Journal of Hydraulic Research* **51**, 223–243.
- Chau, K., Wu, C. & Li, Y. 2005 **Comparison of several flood forecasting models in Yangtze River**. *Journal of Hydrologic Engineering ASCE* **10**, 485–491.
- Chen, W. & Chau, K. 2006 **Intelligent manipulation and calibration of parameters for hydrological models**. *International Journal of Environment and Pollution* **28**, 432–447.
- Cheng, C., Chau, K., Sun, Y. & Lin, J. 2005 **Long-term prediction of discharges in Manwan Reservoir using artificial neural network models**. *Advances in Neural Networks* 1040–1045.
- Daly, B. J. 1969 **A technique for including surface tension effects in hydrodynamic calculations**. *Journal of Computational Physics* **4**, 97–117.
- De Padova, D., Mossa, M., Sibilla, S. & Torti, E. 2013 **3D SPH modelling of hydraulic jump in a very large channel**. *Journal of Hydraulic Research* **51**, 158–173.
- Dewals, B., André, S., Schleiss, A. & Pirotton, M. 2004 **Validation of a quasi-2D model for aerated flows over stepped spillways for mild and steep slopes**. In: *Proceedings of the 6th International Conference of Hydroinformatics*, pp. 63–70.
- Farhodi, J., Hosseini, S. & Sedghi-Asl, M. 2010 **Application of neuro-fuzzy model to estimate the characteristics of local scour downstream of stilling basins**. *Journal of Hydroinformatics* **12**, 201–211.
- Gharangik, A. M. & Chaudhry, M. H. 1991 **Numerical simulation of hydraulic jump**. *Journal of Hydraulic Engineering ASCE* **117**, 1195–1211.
- Gualtieri, C. & Chanson, H. 2007 **Experimental analysis of Froude number effect on air entrainment in the hydraulic jump**. *Environmental Fluid Mechanics* **7**, 217–238.
- Hager, W. H. 1992 *Energy Dissipators and Hydraulic Jump*. Springer, Berlin/New York.
- Hager, W. H. & Bremen, R. 1989 **Classical hydraulic jump: sequent depths**. *Journal of Hydraulic Research* **27**, 565–583.
- Hager, W. H. & Sinniger, R. 1985 **Flow characteristics of the hydraulic jump in a stilling basin with an abrupt bottom rise**. *Journal of Hydraulic Research* **23**, 101–113.

- Harlow, F. H. & Welch, J. E. 1965 Numerical calculation of time-dependent viscous incompressible flow of fluid with free surface. *Physics of Fluids* **8**, 2182.
- Hirsch, C. 2007 *Numerical Computation of Internal and External Flows: The Fundamentals of Computational Fluid Dynamics*. Butterworth-Heinemann, London, p. 1.
- Hirt, C. & Nichols, B. 1981 Volume of fluid (VOF) method for the dynamics of free boundaries. *Journal of Computational Physics* **39**, 201–225.
- Huang, H. & Prosperetti, A. 1994 Effect of grid orthogonality on the solution accuracy of the two-dimensional convection-diffusion equation. *Numerical Heat Transfer* **26** (1), 1–20.
- Hyman, J. M. 1984 Numerical methods for tracking interfaces. *Physica D: Nonlinear Phenomena* **12**, 396–407.
- Issa, R. I. 1985 Solution of the implicitly discretized fluid flow equations by operator-splitting. *Journal of Computational Physics* **62**, 40–65.
- Jang, D., Jetli, R. & Acharya, S. 1986 Comparison of the PISO, SIMPLER, and SIMPLEC algorithms for the treatment of the pressure-velocity coupling in steady flow problems. *Numerical Heat Transfer, Part A: Applications* **10**, 209–228.
- Jsak, H. 1996 *Error Analysis and Estimation for the Finite Volume Method with Applications to Fluid Flows*. PhD thesis, Imperial College of Science, Technology and Medicine, London, UK.
- Johnson, R. & Launder, B. 1982 Discussion of ‘on the calculation of turbulent heat transport downstream from an abrupt pipe expansion’. *Numerical Heat Transfer, Part A Applications* **5**, 493–496.
- Keyes, D., Ecer, A., Satofuka, N., Fox, P. & Periaux, J. 2000 *Parallel Computational Fluid Dynamics '99: Towards Teraflops, Optimization and Novel Formulations*. Elsevier, Amsterdam.
- Kim, S.-E. & Boysan, F. 1999 Application of CFD to environmental flows. *Journal of Wind Engineering and Industrial Aerodynamics* **81**, 145–158.
- Kucukali, S. & Chanson, H. 2008 Turbulence measurements in the bubbly flow region of hydraulic jumps. *Experimental Thermal and Fluid Science* **33**, 41–53.
- Lafon, A. & Yee, H. 1992 On the numerical treatment of nonlinear source terms in reaction-convection equations. In: *AIAA 30th Aerospace Sciences Meeting and Exhibition*, Reno, Nevada.
- Launder, B. E. & Sharma, B. I. 1974 Application of the energy-dissipation model of turbulence to the calculation of flow near a spinning disc. *Letters in Heat and Mass Transfer* **1**, 131–138.
- Liriano, S. & Day, R. 2001 Prediction of scour depth at culvert outlets using neural networks. *Journal of Hydroinformatics* **3**, 231–238.
- Liu, X. & Garcia, M. H. 2008 Three-dimensional numerical model with free water surface and mesh deformation for local sediment scour. *Journal of Waterway, Port, Coastal, and Ocean Engineering*. *ASCE* **134**, 203–217.
- Lopez, F. & Garcia, M. H. 2001 Mean flow and turbulence structure of open-channel flow through non-emergent vegetation. *Journal of Hydraulic Engineering ASCE* **127**, 392–402.
- Ma, J., Oberai, A. A., Lahey Jr, R. T. & Drew, D. A. 2011 Modeling air entrainment and transport in a hydraulic jump using two-fluid RANS and DES turbulence models. *Heat and Mass Transfer* **47**, 911–919.
- McDonald, P. W. 1971 *The Computation of Transonic Flow Through Two-Dimensional Gas Turbine Cascades. Paper 71-GT-89*. American Society of Mechanical Engineers.
- Menter, F. R. 1993 *Zonal two equation k-omega turbulence models for aerodynamic flows*. AIAA paper 2906, 1993.
- Murzyn, F. & Chanson, H. 2008 Experimental assessment of scale effects affecting two-phase flow properties in hydraulic jumps. *Experiments in Fluids* **45**, 513–521.
- Murzyn, F. & Chanson, H. 2009a *Two-Phase Gas-Liquid Flow Properties in The Hydraulic Jump: Review and Perspectives*. Nova Science Publishers, Hauppauge, NY.
- Murzyn, F. & Chanson, H. 2009b Experimental investigation of bubbly flow and turbulence in hydraulic jumps. *Environmental Fluid Mechanics* **2**, 143–159.
- Murzyn, F., Mouaze, D. & Chaplin, J. 2005 Optical fibre probe measurements of bubbly flow in hydraulic jumps. *International Journal of Multiphase Flow* **31**, 141–154.
- Muttill, N. & Chau, K.-W. 2006 Neural network and genetic programming for modelling coastal algal blooms. *International Journal of Environment and Pollution* **28**, 223–238.
- Noh, W. F. & Woodward, P. 1976 SLIC (simple line interface calculation). In: *Proceedings of the Fifth International Conference on Numerical Methods in Fluid Dynamics, June 28–July 2, 1976*. Twente University, Enschede, The Netherlands, pp. 330–340.
- OpenFOAM 2011 *OpenFOAM: The Open Source CFD Toolbox User Guide*. The Free Software Foundation Inc. <http://foam.sourceforge.net/docs/Guides-a4/UserGuide.pdf> (accessed 1 December 2013).
- Osher, S. & Sethian, J. A. 1988 Fronts propagating with curvature-dependent speed: algorithms based on Hamilton-Jacobi formulations. *Journal of Computational Physics* **79**, 12–49.
- Patankar, S. & Spalding, D. 1972 A calculation procedure for heat, mass and momentum transfer in three-dimensional parabolic flows. *Journal of Heat and Mass Transfer* **15**, 1787–1806.
- Peterka, A. J. 1984 *Hydraulic design of stilling basins and energy dissipaters*. Engineering Monograph no. 25. US Bureau of Reclamation.
- Resch, F. & Leutheusser, H. 1972 Reynolds stress measurements in hydraulic jumps. *Journal of Hydraulic Research* **10**, 409–430.
- Rodrigues, M. A., Padrela, L., Geraldés, V., Santos, J., Matos, H. A. & Azevedo, E. G. 2011 Theophylline polymorphs by atomization of supercritical antisolvent induced suspensions. *The Journal of Supercritical Fluids* **58**, 303–312.
- Romagnoli, M., Portapila, M. & Morvan, H. 2009 Computational simulation of a hydraulic jump. *Mecanica Computacional*. **XXVIII**, 1661–1672.
- Rusche, H. 2002 *Computational Fluid Dynamics of Dispersed Two-Phase Flows at High Phase Fractions*. PhD thesis, Imperial College of Science, Technology and Medicine, London, UK.

- Schlichting, H. & Gersten, K. 2000 *Boundary-Layer Theory*. Springer, Berlin.
- Taormina, R., Chau, K.-W. & Sethi, R. 2012 [Artificial neural network simulation of hourly groundwater levels in a coastal aquifer system of the Venice lagoon](#). *Engineering Applications of Artificial Intelligence* **25**, 1670–1676.
- Taylor, E. S. 1959 The skewed boundary layer. *Journal of Basic Engineering, Transactions ASME, Series D* **81**, 297–304.
- Thomas, S., Hankey, W., Faghri, A. & Swanson, T. 1990 [One-dimensional analysis of the hydrodynamic and thermal characteristics of thin film flows including the hydraulic jump and rotation](#). *Journal of Heat Transfer ASME* **112**, 728–735.
- Toge, G. E. 2012 *The Significance of Froude Number in Vertical Pipes: a CFD study*. University of Stavanger, Norway.
- Toth, E. & Brandimarte, L. 2011 [Prediction of local scour depth at bridge piers under clear-water and live-bed conditions: comparison of literature formulae and artificial neural networks](#). *Journal of Hydroinformatics* **13**, 812–824. doi: 10.2166/hydro.2011.065.
- Ubbink, O. 1997 *Numerical Prediction of Two Fluid Systems with Sharp Interfaces*. PhD thesis, Imperial College of Science, Technology and Medicine, London, UK.
- Van Leer, B. 1982 Flux-vector splitting for the Euler equations. In: *Eighth International Conference on Numerical Methods in Fluid Dynamics*, 28 June–2 July 1982, Aachen. Springer, pp. 507–512.
- Von Karman, T. 1930 Mechanische Ähnlichkeit und Turbulenz. *Nachrichten von der Gesellschaft der Wissenschaften zu Göttingen, Fachgruppe 1 (Mathematik)* **5**, 58–76.
- Weller, H., Tabor, G., Jasak, H. & Fureby, C. 1998 [A tensorial approach to computational continuum mechanics using object-oriented techniques](#). *Computers in Physics* **12**, 620–631.
- Wilcox, D. 1998 *Turbulence modelling for CFD*. DCW Industries, La Canada, CA, USA.
- Witt, A., Gulliver, J. & Shen, L. 2013 [Bubble Visualization in a Simulated Hydraulic Jump](#). The Smithsonian/NASA Astrophysics Data System. <http://arxiv.org/pdf/1310.2635v1.pdf> (accessed on 14 February 2014).
- Wu, C., Chau, K. & Li, Y. 2009 [Predicting monthly streamflow using data-driven models coupled with data-preprocessing techniques](#). *Water Resources Research* **45**, 1–23. doi: 10.1029/2007WR006737.
- Wu, S. & Rajaratnam, N. 1996 [Transition from hydraulic jump to open channel flow](#). *Journal of Hydraulic Engineering ASCE* **122**, 526–528.
- Yakhot, V., Orszag, S., Thangam, S., Gatski, T. & Speziale, C. 1992 [Development of turbulence models for shear flows by a double expansion technique](#). *Physics of Fluids A: Fluid Dynamics (1989–1993)* **4**, 1510–1520.
- Young, D. F., Bruce, R. M., Okiishi, Th. H. & Huebsch, W. W. 2010 *A Brief Introduction to Fluid Mechanics*. John Wiley & Sons, London.
- Youngs, D. L. 1984 An interface tracking method for a 3D Eulerian hydrodynamics code. *Technical Report* **44**, 35–35.

First received 20 March 2014; accepted in revised form 1 February 2015. Available online 13 March 2015