



activity (Logothetis et al., 2010; Chkhenkeli et al., 2004; Kinoshita et al., 2004). Thus, our findings suggest that ECoG electrical stimulation can evoke memories when it inhibits local neuronal spiking in a way that mimics the neural activity that appears when a memory is retrieved normally.

## METHODS

### Patient

A right-handed male patient in his thirties with drug-resistant epilepsy was surgically implanted with ECoG electrodes to identify epileptiform brain regions for potential resection. He had suffered simple partial, complex partial, and secondarily generalized convulsions since age 5. Clinically, his seizures typically started with a vague sense of *deja vu*, but not vivid memories (nothing related to his HS). MRI scans did not reveal any lesions, but scalp recordings suggested temporal lobe onset (potentially bilateral). Pre-operative testing revealed normal scores on memory and IQ tests without any major localizing or lateralizing findings. The patient was treated with levetiracetam, oxcarbazepine, and pregabalin as an outpatient, but these were withdrawn during our stimulation and cognitive testing sessions.

The ECoG electrodes were strips that were placed on the surface of widespread cortical regions, including bilateral temporal lobes, left occipital cortex, right frontal cortex, and left parietal cortex (see Supplementary Figure S1 available on-line at <http://jacobslab.biomed.drexel.edu/stimulation/>). Each electrode was manufactured by Ad-Tech Medical Instrument Corporation and had a 4-mm conductive surface. The electrodes remained implanted for 4 weeks while the patient was connected to a clinical recording system and waited for epileptiform activity that would guide doctors in potential resective surgery. This recording system (Grass-Telefactor Corp., West Warwick, RI) measured ECoG activity with a 512-Hz sampling rate. During this monitoring interval, in free time between clinical interactions the patient performed cognitive tasks on a bedside laptop computer (Jacobs & Kahana, 2010; Jerbi et al., 2009). All testing and data collection (including anonymized video) was approved by the University of Pennsylvania's Institutional Review Board.

During ECoG monitoring, the patient did not experience his typical seizures. Two short focal epileptiform runs were captured (one right temporal and one left temporal), but they were not useful for resection planning and did not occur near the times of our testing sessions. Because a single seizure focus could not be clearly identified, the electrodes were eventually explanted without resective surgery. Overall, we have no reason to believe the patient's neurological characteristics affected our research findings.

### Stimulation

During ECoG monitoring, the patient underwent a routine preoperative functional stimulation mapping procedure to

identify areas eloquent for motor and speech function, as well as a research procedure to identify sites involved in memory encoding (for the Methods and Results of this experimental procedure, see the Supplemental Material available at <http://jacobslab.biomed.drexel.edu/stimulation/>). This research procedure attempted to use electrical stimulation to modulate memory performance, and 11 stimulation sites were chosen because they exhibited ECoG activity related to memory formation (Sederberg, Kahana, Howard, Donner, & Madsen, 2003). Stimulations were conducted with a Grass Technologies S88 device. The site described in the text was the only location where stimulation caused an unusual behavior; no stimulations caused significant modulations in memory performance. In the first stimulation session when HS memories were evoked, stimulations consisted of 300- $\mu$ sec biphasic pulses at 50 Hz for a duration of 1 sec. In the second, the stimulations were 600- $\mu$ sec biphasic pulses at 50 Hz for 2.8 sec.

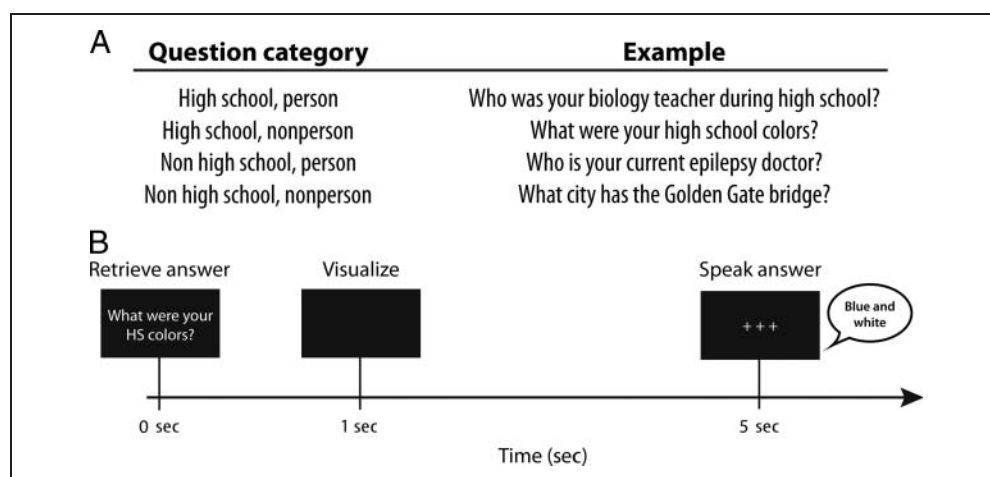
### HS Memory Task

During normal ECoG recording without stimulation, the patient performed a remote memory task that we designed to identify potential neural activity related to HS. This task asked the patient to recall and visualize the answers to questions from various categories (Figure 2A), including information related to his HS. There were 32 questions, eight from each of four categories: HS person, HS non-person, non-HS person, and non-HS nonperson. Questions were chosen by the authors without having specific knowledge of any of the patient's HS experience. All person-related questions were included as controls because the electrode of interest was located near face-responsive cortical regions (Kanwisher, McDermott, & Chun, 1997). All of the HS questions concerned autobiographical information. Of the non-HS person questions, five concerned autobiographical information and the other three queried non-autobiographical information (the nonautobiographical questions are numbered 17, 23, and 24 in Supplementary Table 1, available on-line). The non-HS nonperson questions were nonautobiographical queries of geographical locations, which were selected as a control group because the electrode of interest was near regions that have been implicated in spatial processing (Epstein & Kanwisher, 1998).

In each trial, the patient viewed a single question. Each question appeared at the center of the laptop computer screen, and the patient was instructed to press a key after reading it (Figure 2B). Then the computer screen went blank, and the patient was asked to silently visualize the answer with his eyes closed. The computer emitted a tone after 3800–4200 msec (uniformly distributed) to indicate that the visualization period was over and that the patient should open his eyes. Then three fixation crosses appeared on the screen and the patient spoke the answer aloud. The patient could pause briefly before pressing a key to advance to the next trial. The task consisted 10 blocks, and we encouraged the patient to take a several-minute



**Figure 2.** The custom memory task we designed to examine the neural representation of HS memories in this patient. (A) The four categories of questions during the memory task. (B) A timeline of the retrieval, visualization, and vocalization phases of each task trial.



throughout the patient’s monitoring. This afforded us the unique opportunity to examine neural activity at the stimulation site during normal cognition. We hypothesized that by recording normal brain activity here, it could reveal a distinctive neural pattern that would explain why stimulation caused memory retrieval.

Following the stimulation sessions, the patient participated in our custom-designed HS memory task (Figure 2). Our data analyses from this task sought to identify distinctive patterns of neuronal activity related to processing HS information. We computed the amplitude of ECoG activity at each electrode for each of various frequency bands and time intervals after each question appeared on the screen. Then we tested whether the amplitude of neuronal activity in each band varied according to whether HS or non-HS questions were viewed. Across all electrodes, viewing HS questions elicited a distinctive pattern of neuronal activity that was significant at only one site—the same electrode (Electrode 17) where stimulation elicited HS memories (Figure 3A). We examined activity at this site in more detail and found that the contrast between viewing HS and non-HS questions was reflected neurally by changes in the amplitude of activity in the high-gamma band (65–150 Hz) from ~350 to ~450 msec after the question appeared ( $p < 10^{-6}$ ,  $t$  test; Figure 3B). Figure 3C details the timecourse of the neuronal activity at this site, revealing that both HS and non-HS stimuli caused an increase in the amplitude of high-gamma activity after question onset. The magnitude of this increase was larger for non-HS questions than HS questions, resulting in an attenuation of high-gamma ECoG activity for retrieving HS information. The pattern was unaffected by whether the patient answered questions about people or nonpeople (Figure 3D).

High-gamma ECoG activity is caused by a broadband signal that is highly correlated with the rate of local neuronal spiking (Ray & Maunsell, 2011; Jacobs, Manning, & Kahana, 2010; Manning et al., 2009; Miller, Sorensen, Ojemann, & den Nijs, 2009). Thus, the lower high-gamma amplitude for HS questions suggests that the population

of neurons at this site was less active when the patient retrieved HS memories. More broadly, these findings suggest that neurons at this site are part of a network that represents the concept “high school” in this patient’s brain.

We considered the hypothesis that apparent HS-related neuronal activity could result from other interquestion differences, such as HS questions being more difficult. By asking the patient to rate each question according to how difficult it was to visualize its answer (Supplementary Table 1, available on-line), we found that HS questions had slightly lower visualizability ( $p = .03$ ) and RTs ( $p = .11$ ) than non-HS questions. We used a multivariate linear model to distinguish which of these factors (HS/non-HS, visualizability, RT, and their interactions) best predicted the observed neuronal activity. This analysis indicates that the distinctive activity at this site was most closely related to the concept of HS, as the HS factor was the only significant predictor of neuronal activity ( $p = .02$ ), unlike visualizability or RT ( $ps > .3$ ).

Given the distinctive HS-related high-gamma activity that appeared at this electrode, we conducted follow-up analyses to characterize the functional role of the cortex at this site. First, we characterized neural responses to individual stimuli within each of the four categories, inspired by recent studies showing detailed neural correlates of individual brain states (Jacobs & Kahana, 2009; Kriegeskorte, Formisano, Sorger, & Goebel, 2007). To do this, we tested for differences in the amplitude of neuronal activity for individual questions within each category using four one-way ANOVAs. We computed the mean amplitude of high-gamma ECoG activity 300–450 msec after each question appearance. For three of the categories (all except HS people) this signal differed significantly ( $ps < .01$ ) across individual questions in that category (Figure 4). For example, in the HS nonpeople category, there was an especially large activation for the question “Who was your main rival high school, if you had to pick one?” This suggests that there is a hierarchy of neuronal responses at this site, with some neurons representing information about specific memories (Jacobs & Kahana, 2009), in addition to

coarser neural activity that distinguishes HS and non-HS information.

Previous work reported specific cortical regions that play a role in representing autobiographical memories (Cabeza & St. Jacques, 2007; Svoboda, McKinnon, & Levine, 2006; Gilboa, Winocur, Grady, Hevenor, & Moscovitch, 2004; Piefke, Weiss, Zilles, Markowitsch, & Fink, 2003; Fink et al., 1996). Thus, we considered that the HS-related activity we observed could be a part of a broader cortical network that represents autobiographical information in general. To test whether activity at this location represented general autobiographical information, we scrutinized neural responses to the questions from the non-HS people category, which included both autobiographical and nonautobiographical queries. Across these questions, we observed significantly attenuated activity for autobiographical information compared with nonautobiographical information ( $p < .001$ ,  $t$  test). This suggests that the cortical networks that represent autobiographical and HS information in this person overlap or are related. However, we confirmed that the HS and autobiographical effects at this site are at least partially independent, as we still observed significantly lower high-gamma activity for HS information compared with non-HS information when we restricted the

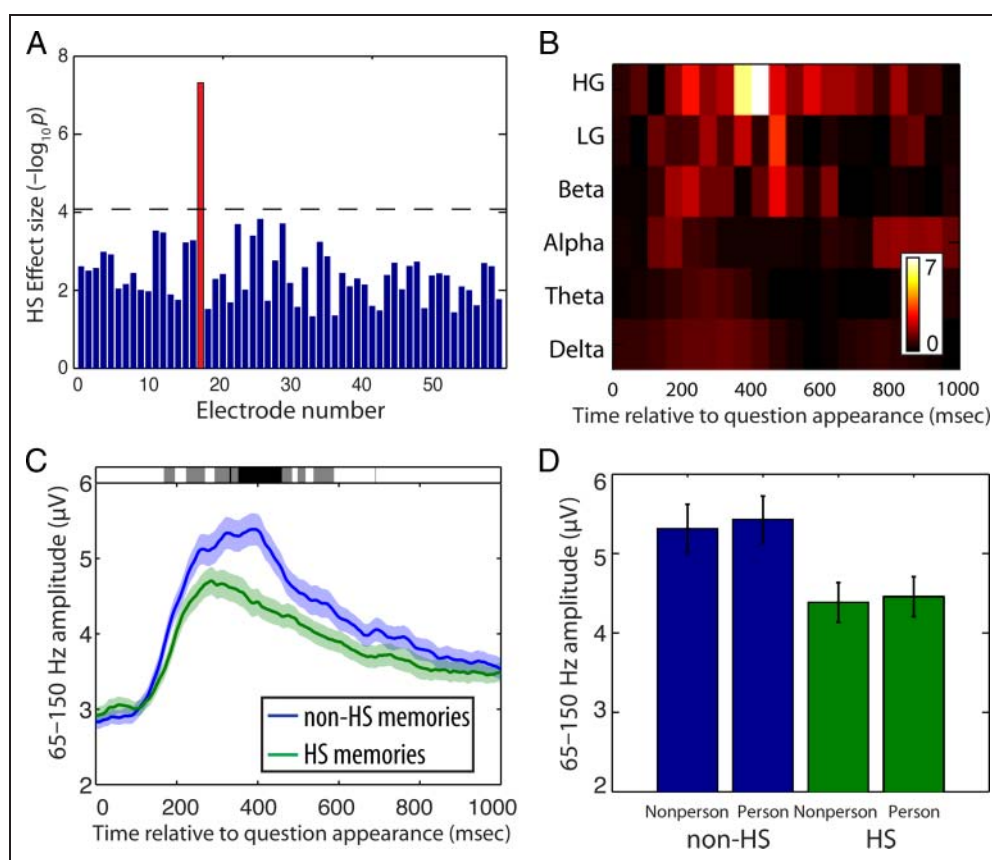
comparison with only include autobiographical questions ( $p < .02$ ,  $t$  test).

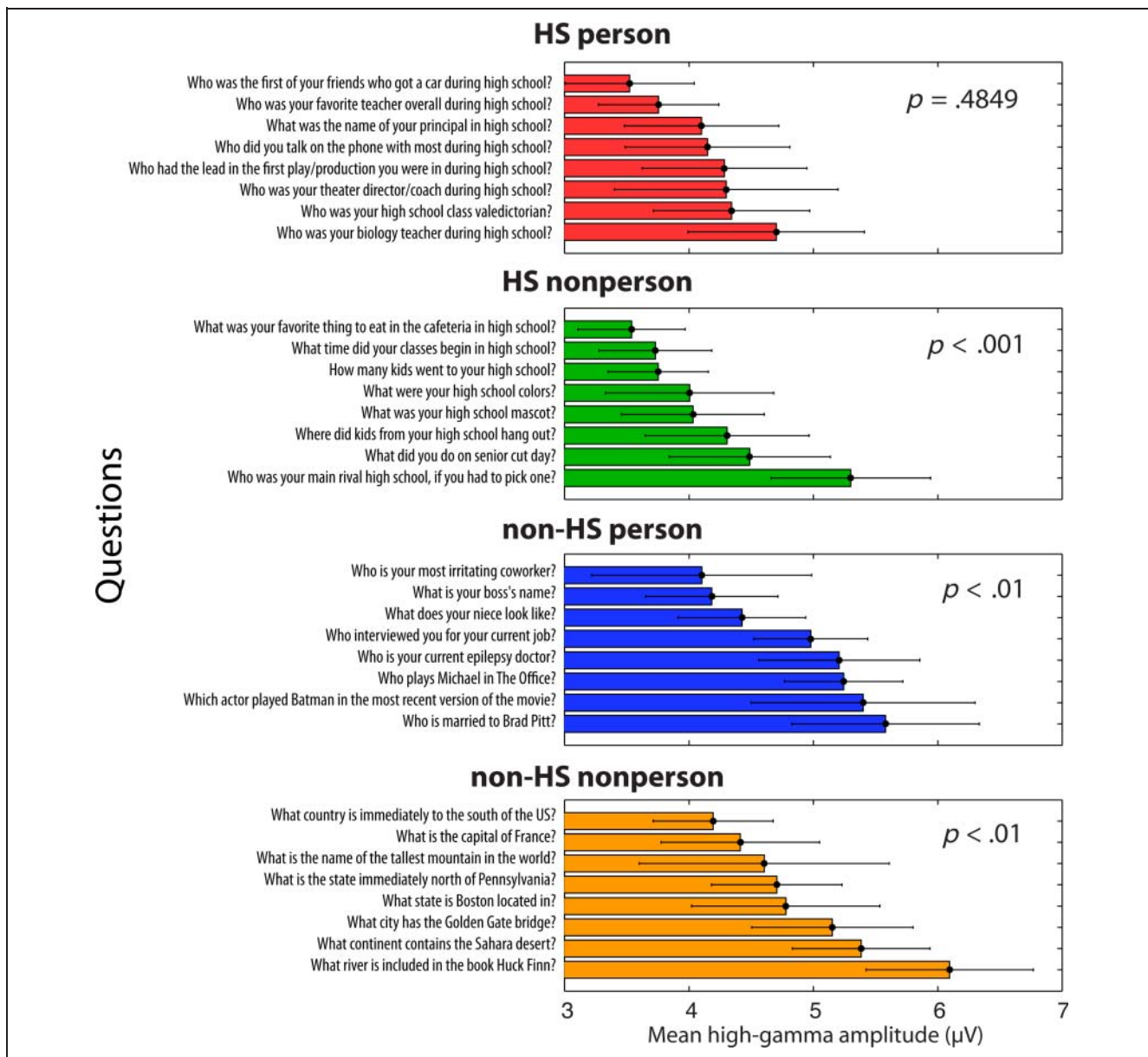
We also conducted an ERP analysis of this site (Luck, 2005). ERPs for all question types exhibited a P400 response (Figure 5A), similar to previous recordings in the human ventral-temporal lobe (Nobre, Allison, & McCarthy, 1994). However, unlike the high-gamma patterns described above, the ERP did not distinguish between HS and non-HS memories (Figure 5B; Bonferroni-corrected  $ps > .05$ ). The fact that we did not observe an ERP effect is not necessarily surprising, as other recent ECoG studies also reported that ERPs and high-gamma activity respond in complementary ways (Engell & McCarthy, 2010; Vidal et al., 2010).

### Analysis of Memory Visualization

In addition to examining neural activity when the patient retrieved each question's answer, we also analyzed the visualization phase of each trial. This analysis was motivated by recent studies suggesting that visualizing information would elicit neuronal activity similar to the patterns observed when the information was initially processed

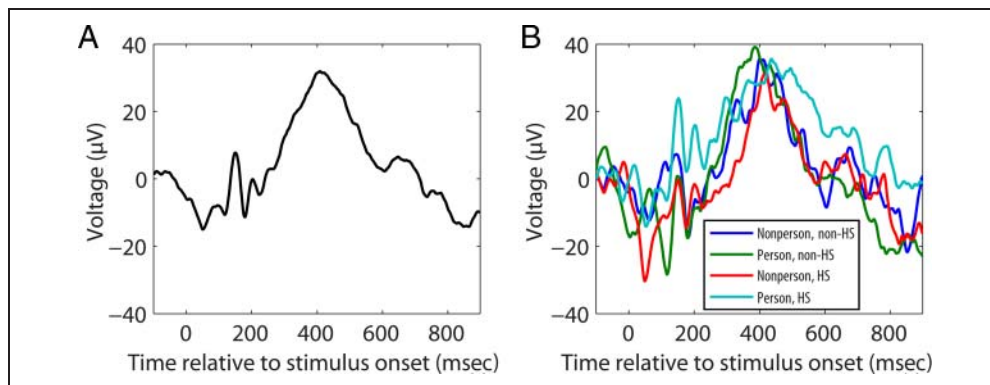
**Figure 3.** HS-related ECoG activity. (A) The significance of the difference in ECoG amplitude between HS and non-HS stimuli at each electrode ( $-\log_{10}(p)$ ). The bar for each electrode is computed by identifying the minimum  $p$  value across two-sided  $t$  tests that were performed at each frequency band and time interval between HS and non-HS stimuli. Red bar indicates Electrode 17. Dotted line indicates the significance threshold ( $p < .01$ ; Bonferroni-corrected). (B) Significance of HS-related power changes at Electrode 17 for various frequency ranges and time intervals. HG denotes the 65–150 Hz “high gamma” band; LG denotes the 30–55 Hz “low gamma” band. The color at each point indicates the  $-\log_{10} p$  value from a  $t$  test comparing the amplitude of activity between answering questions on HS and non-HS topics. (C) Timecourse of the activity at this site after stimulus onset. Shaded regions indicate 95% confidence intervals, computed across the different presentations of questions from each category. Gray shading at top indicates differences at  $p < .001$ ; black shading denotes  $p < 10^{-6}$ . (D) The mean amplitude of high-gamma activity 350–450 msec after question onset for each stimulus category. Error bars indicate 95% confidence intervals.

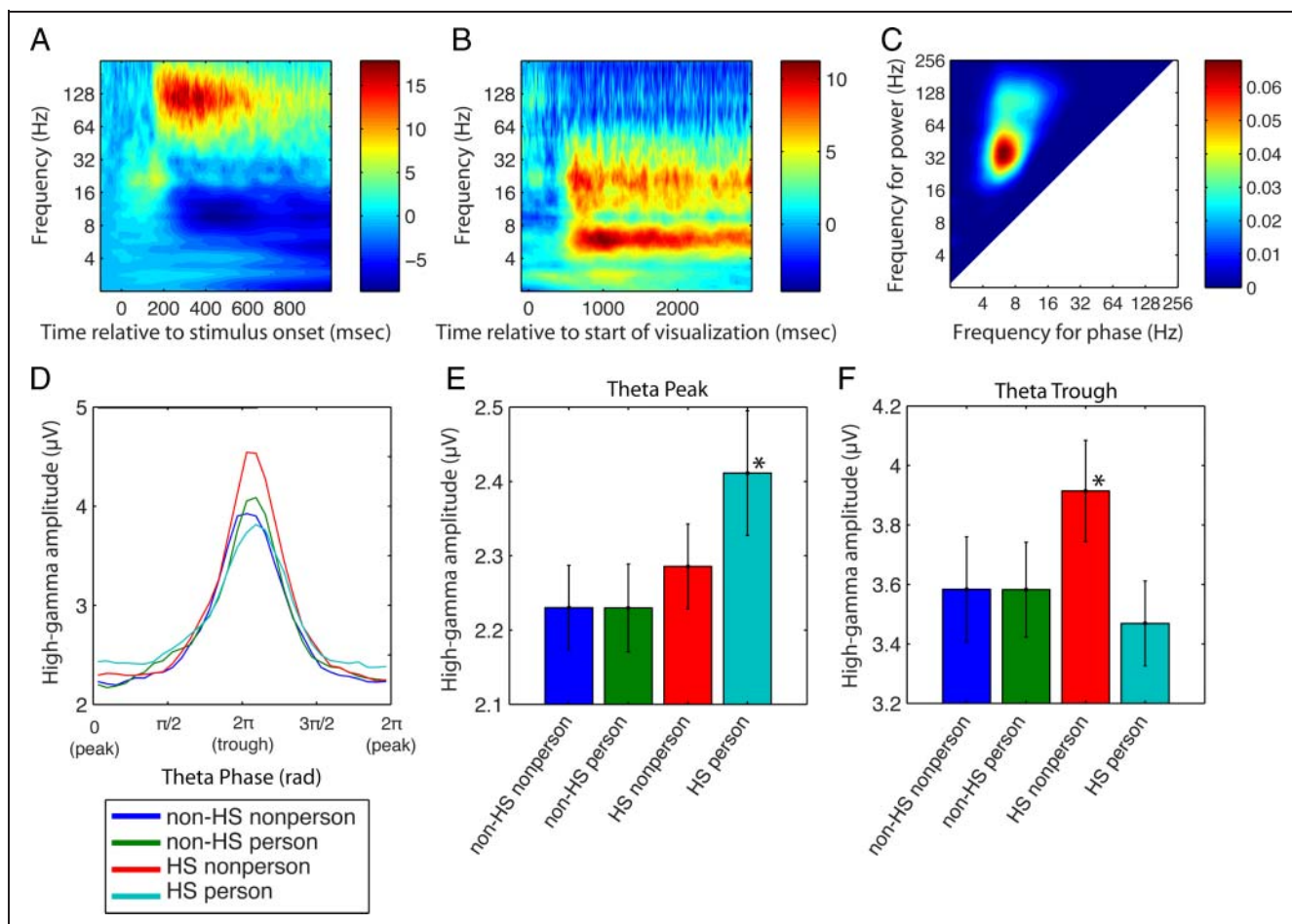




**Figure 4.** High-gamma activity for individual questions. Graphs depict the amplitudes of high-gamma responses at Electrode 17 to individual questions from different categories. Labels on the left side of plot indicate the text of each question; error bars denote 95% confidence intervals (computed across the 10 times each question was presented). The  $p$  value inside each plot comes from a one-way ANOVA comparing the responses within each group.

**Figure 5.** ERP analysis at the site where stimulation induced retrieval of HS information. (A) Mean ERP computed after the presentation of all questions. The signal was baseline-corrected relative to the 100-msec period preceding question onset. (B) ERPs computed separately for the presentations of questions from each category. There were no significant differences between the ERPs for these groups.





**Figure 6.** Neuronal activity related to stimulus visualization. (A) The mean power spectrum after viewing each question during the memory retrieval interval. The color at each point indicates the power change (decibels) relative to the mean power in the baseline period (the 100 msec before stimulus onset). (B) Mean power spectrum during the visualization of each question's answer. (C) Analysis of PAC. Color at each location indicates the magnitude of coupling ( $r^2$ ) from a circular-linear regression where low-frequency phase is used to predict the amplitude of high-frequency activity. (D) The amplitude of high-gamma activity during visualization for each question category, as a function of theta ( $4\text{--}8$  Hz) phase. (E) High-gamma activity during visualization at the peak phase of theta ( $0^\circ \pm 45^\circ$ ). Asterisks denote groups with significant elevations (post hoc  $t$  tests,  $p < .01$ ). Error bars denote 95% confidence intervals computed across trials. (F) High-gamma activity during visualization at the theta trough ( $180^\circ \pm 45^\circ$ ).

(Harrison & Tong, 2009; Polyn, Natu, Cohen, & Norman, 2005).

Whereas memory retrieval was characterized by elevated high-gamma activity at this site (Figure 6A), during visualization there were prominent theta ( $4\text{--}8$  Hz) and beta ( $20\text{--}30$  Hz) oscillations (Figure 6B). The amplitude of theta and beta activity did not vary with the stimulus category ( $p > .05$ ). We examined whether these visualization-related oscillations were involved in PAC, a phenomenon where the amplitude of a high-frequency signal dynamically varies with the phase of a slower oscillation (Voytek et al., 2010; Sirota et al., 2008; Tort et al., 2008; Canolty et al., 2006; Lakatos et al., 2005; Mormann et al., 2005). We measured PAC by using a linear model to identify the variation ( $r^2$ ) in the amplitude of high-frequency activity that could be explained by the phase of a slower oscillation (Penny et al., 2008; Fisher, 1993). Figure 6C depicts the results of our PAC analyses across widespread frequencies,

showing that during stimulus visualization there was PAC between theta oscillations and two higher-frequency signals: one at  $\sim 40$  Hz ("low gamma") and the other at  $\sim 100$  Hz ("high gamma").

We examined whether the detailed patterning of PAC varied with the category of the visualized stimulus, in line with predictions of theoretical models suggesting that oscillatory phase coupling is involved in memory maintenance (Buzsáki, 2005; Jensen & Lisman, 2005). For each question category, we computed the amplitude of high-frequency activity at four theta phase bins (peak, trough, ascending, and descending). Overall, the amplitude of high-gamma activity was elevated at the theta trough for all categories, consistent with previous work (Canolty et al., 2006). However, at particular theta phases, the amplitude of high-gamma activity varied with the category of the visualized memory (fixed-effect ANOVA,  $p < .005$ ; Figure 6D); this effect was absent for low gamma ( $p > .1$ ).

This result was driven by two patterns: At the theta peak, neural activity was greater when the patient visualized HS person memories (Figure 6E;  $p < 10^{-4}$ , post hoc *t* test) and at the trough activity was elevated for HS nonperson memories (Figure 6F;  $p < .005$ ). Thus, activity at this site represented HS-related information both during memory retrieval and visualization, but the nature of these coding schemes differed.

## DISCUSSION

In spite of decades of work (Selimbeyoglu & Parvizi, 2010; Gloor, 1990; Halgren et al., 1978; Penfield, 1938), we still have not gained a solid understanding of why brain stimulation causes some patients to experience spontaneous memory recall. Here, by recording normal brain activity at a site where stimulation caused memory retrieval, it revealed for the first time a distinctive neural pattern that helps explain this phenomenon mechanistically.

At a site where stimulation caused retrieval of HS memories, we observed that there was less high-gamma ECoG activity for remembering HS information compared with other categories during normal cognition in the absence of stimulation. High-gamma activity is a robust correlate of neuronal spiking, as demonstrated by recent work showing that both of these signals are related to broadband ECoG activity (Jacobs et al., 2010; Manning et al., 2009; Miller et al., 2007, 2009). Thus, the lower level of high-gamma activity at this site indicates that the population of neurons here are less active when the patient normally retrieves HS memories.

Unlike microelectrodes, the clinical ECoG electrodes that we used record the aggregate activity of  $\sim 5 \times 10^5$  neurons (Miller et al., 2009). The fact that we are able to observe HS-related neuronal activity with this type of electrode suggests that this patient has a contiguous group of neurons at this ventral-temporal location that are part of a network that encodes the “high school-ness” of a memory. More broadly, this suggests that other neurons in the human temporal lobe may be clustered spatially such that nearby neurons respond to similar abstract categories. In this way, our findings extend recent studies identifying distinct category-specific cortical regions, such as those responding to faces, places, animals, or tools (Dahl, Logothetis, & Kayser, 2009; Mitchell et al., 2008; Beauchamp, Argall, Bodurka, Duyn, & Martin, 2004; Martin & Chao, 2001; Epstein & Kanwisher, 1998; Kanwisher et al., 1997). However, unlike these regions, which are generally consistent across individuals (Tsao, Moeller, & Freiwald, 2008; Epstein & Kanwisher, 1998; Kanwisher et al., 1997), it is unlikely that all humans have HS patches of cortex, as many developed and well-functioning humans are unaware of this concept. Instead, it seems likely that neurons representing abstract information like HS develop this responsiveness through experience.

An important broader issue is understanding how a patch of neurons that encodes HS-related information fits

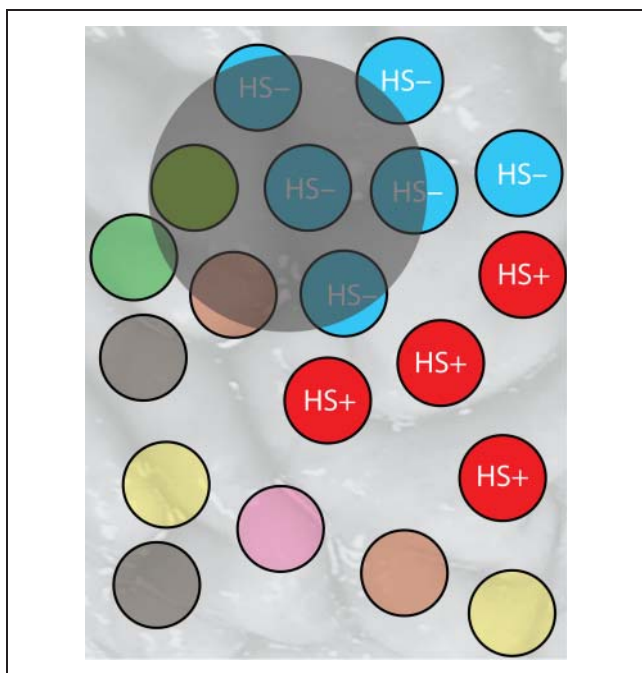
into the larger-scale organization of the human brain. One possibility is that the HS region borders areas that encode memories from nearby periods, such as elementary school or college. We could not examine this issue in this patient because of time constraints. However, we did find that neurons in this same region also participate more generally in representing autobiographical memories (Cabeza & St. Jacques, 2007; Fink et al., 1996). This suggests that the HS patch in this patient may be part of a hierarchy, being situated near or among cells that represent various types of autobiographical information more generally.

We hypothesize that electrical stimulation at a site can evoke a memory if normal recordings from that area reveal distinctive neural activity when retrieving that memory compared with others. This interpretation is consistent with the data reported here and with current knowledge about the electrophysiology of brain stimulation. The type of ECoG stimulation that we used is generally thought to inhibit local activity (Kinoshita et al., 2004; Dostrovsky et al., 2000) via activation of inhibitory interneurons (Logothetis et al., 2010). Thus, our findings suggest that ECoG stimulation causes memory retrieval by causing a pattern of inhibition that is similar to the attenuated activity that appears at that area when the memory is retrieved normally. Observing a lower level of activity for a particular class of stimulus might be considered surprising, based on the common observations of individual neurons that increase their firing for particular stimuli or categories (e.g., Quiroga, Reddy, Kreiman, Koch, & Fried, 2005; Tovee, Rolls, Treves, & Bellis, 1993). However, this type of pattern has been repeatedly observed in larger-scale brain recordings that measure entire neuronal populations, such as functional imaging (Shmuel, Augath, Oeltermann, & Logothetis, 2006) or local field potentials (Lachaux et al., 2008; Freeman & Schneider, 1982).

During normal memory retrieval, this patient’s “HS patch” exhibited increased activity compared with the baseline for all questions, but the magnitude of this increase was significantly smaller for HS questions. One potential explanation for this pattern is that there are distinct populations of neurons at this site (Figure 7), including one that is specifically inhibited when representing the concept of HS (“HS–”) as well as others that activate for retrieval of various memories. The recording electrode could have measured the average activity of both populations and thus recorded less overall high-gamma activity for HS questions. Following this model, stimulation could have elicited HS memories because it inhibited various cells including the HS subpopulation. However, additional work is necessary to test this model by revealing how individual memories are represented at the scale of individual neurons.

In our interpretation, stimulation at Electrode 17 caused this patient to experience HS memory retrieval because it partially replicated a neural pattern that was normally present during recall of HS information. Gloor (1990) hypothesized that stimulation-induced memory retrieval occurs because the stimulation creates a local pattern of





**Figure 7.** Illustration of a hypothetical organization of the cortex where stimulation evoked memories of HS. When the patient recalls HS memories, individual cortical columns (small circles) may exhibit decreased (“HS−”; blue) or increased (“HS+”; red) activity. The small unlabeled circles represent columns where neuronal activity does not specifically encode HS-related information but may activate for various other memories. The electrode where we observed HS-related ECoG activity is represented by the large shaded circle, which overlies several HS− columns.

activation that is filled in by activity at other brain sites, leading to a global state that approximates the brain state of a remote memory. Our data support Gloor’s theory by revealing that there can be a robust correspondence between activity at the stimulation site during normal cognition and the neural correlate of the memory evoked when that location is stimulated. We note that our interpretation and that of Gloor contradict Penfield’s general view on stimulation-induced memory retrieval. Penfield generally argued that there was no relation between the location of the stimulated cortex and the content of the spontaneously recalled memory. Instead, he suggested that the details of a memory elicited by stimulation were random: “The experience that appears...when stimulation is begun...seems to depend on chance. It may be recent or it may come from childhood many years before.” (Penfield, 1958). To the contrary, our findings show that, at least in some cases, there is a correspondence between activity at the stimulation site during normal cognition and the properties of the memory that is evoked when that location is stimulated. Consistent with our interpretation, we note that some of Penfield’s case reports did describe instances where repeated stimulations at one site elicited the same memory (Penfield, 1975).

Although our findings showed that stimulation at this site was sufficient to evoke HS memories, we do not be-

lieve that this is necessarily the only cortical region where neurons in this patient store HS memories or, more generally, that memories are stored solely at individual cortical locations. Previous research clearly showed that stimulation at widespread brain regions can cause memory retrieval, including both neocortical and limbic structures (Barbeau et al., 2005; Bartolomei et al., 2004; Gloor et al., 1982; Halgren et al., 1978). Consistent with this, we believe that various memories are stored throughout distributed brain networks. We note that unlike some previous studies (Bartolomei et al., 2004; Penfield & Perot, 1963; Jackson, 1879), we observed that HS memory retrieval occurred without after-discharges. More work is necessary to understand the potential involvement of afterdischarges in stimulation-related memory retrieval.

Unlike the retrieval interval, during visualization we observed robust theta and beta oscillations. This was not entirely unexpected because previous studies implicated these oscillations in memory maintenance (Kopell, Whittington, & Kramer, 2011; Engel & Fries, 2010; Lee, Simpson, Logothetis, & Rainer, 2005; Raghavachari et al., 2001). However, we were surprised to find that the HS person and HS nonperson categories were represented by increased neuronal activity at different theta phases (Figure 6). Neuronal oscillations have been shown to enhance information coding by revealing oscillatory phases when spikes are most informative (Fries, 2009; Jacobs, Kahana, Ekstrom, & Fried, 2007; Lakatos et al., 2005; Lee et al., 2005) and to help represent order information with different oscillatory phases representing positions in a sequence (Siegel, Warden, & Miller, 2009; Jensen & Lisman, 2005). However, our results are the first to suggest that activity at a neocortical site occurred at separate phases for different stimulus categories.

## Conclusion

In conclusion, we found a detailed correspondence between the activity at a cortical region during normal memory retrieval and the behavioral effect of electrically stimulating that site. Our findings offer an explanation for the neuronal basis of stimulation-induced memory recall by indicating that stimulation induces memory retrieval by artificially reinstating brain patterns from normal cognition. An additional novel finding we made is identifying a patch of cortex where neurons encode information about an abstract concept (i.e., “high school”). A challenge for future researchers is to map how abstract information is represented in the human brain more generally and determine whether this coding follows spatial organizational schemes analogous to the ones observed in sensory regions (Van Essen & Maunsell, 1983; Penfield & Boldrey, 1937).

## Acknowledgments

We are grateful to the patient for his generous participation in our study. We thank Drs. Michael Kahana, Brian Litt, Gordon

Baltuch, Nikos Logothetis, Morris Moscovitch, Peter Crino, Sean Polyn, and Mijail Serruya for helpful scientific discussions. We are appreciative to Jonathan Miller, Joshua Magarik, Ryan Williams, and Marc Countache for technical assistance. This work was supported by NIH grants R21-NS067316, 2R01-MH61975, and T32-NS054575, and the Dana Foundation.

Reprint requests should be sent to Dr. Joshua Jacobs, School of Biomedical Engineering, Science and Health Systems, Drexel University, Philadelphia, PA 19104, or via e-mail: Joshua.Jacobs@drexel.edu or Dr. Bradley Lega, Department of Neurosurgery, University of Pennsylvania, Philadelphia, PA 19104, or via e-mail: Bradley.Lega@uphs.upenn.edu.

## REFERENCES

- Barbeau, E., Wendling, F., Régis, J., Duncan, R., Poncet, M., & Chauvel, P. (2005). Recollection of vivid memories after perirhinal region stimulations: Synchronization in the theta range of spatially distributed brain areas. *Neuropsychologia*, *43*, 1329–1337.
- Bartolomei, F., Barbeau, E., Gavaret, M., Guye, M., McGonigal, A., & Régis, J. (2004). Cortical stimulation study of the role of rhinal cortex in déjà vu and reminiscence of memories. *Neurology*, *63*, 858.
- Beauchamp, M., Argall, B., Bodurka, J., Duyn, J., & Martin, A. (2004). Unraveling multisensory integration: Patchy organization within human STS multisensory cortex. *Nature Neuroscience*, *7*, 1190–1192.
- Buzsáki, G. (2005). Theta rhythm of navigation: Link between path integration and landmark navigation, episodic and semantic memory. *Hippocampus*, *15*, 827–840.
- Cabeza, R., & St. Jacques, P. (2007). Functional neuroimaging of autobiographical memory. *Trends in Cognitive Sciences*, *11*, 219–227.
- Canolty, R. T., Edwards, E., Dalal, S. S., Soltani, M., Nagarajan, S. S., & Kirsch, H. E. (2006). High gamma power is phase-locked to theta oscillations in human neocortex. *Science*, *313*, 1626–1628.
- Chkhenkeli, S., Sramka, M., Lortkipanidze, G., Rakviashvili, T., Bregvadze, E., & Magalashvili, G. (2004). Electrophysiological effects and clinical results of direct brain stimulation for intractable epilepsy. *Clinical Neurology and Neurosurgery*, *106*, 318–329.
- Dahl, C., Logothetis, N., & Kayser, C. (2009). Spatial organization of multisensory responses in temporal association cortex. *Journal of Neuroscience*, *29*, 11924.
- Dostrovsky, J., Levy, R., Wu, J., Hutchison, W., Tasker, R., & Lozano, A. (2000). Microstimulation-induced inhibition of neuronal firing in human globus pallidus. *Journal of Neurophysiology*, *84*, 570.
- Engel, A., & Fries, P. (2010). Beta-band oscillations-signalling the status quo? *Current Opinion in Neurobiology*, *20*, 156–165.
- Engell, A., & McCarthy, G. (2010). Selective attention modulates face-specific induced gamma oscillations recorded from ventral occipitotemporal cortex. *Journal of Neuroscience*, *30*, 8780.
- Epstein, R. A., & Kanwisher, N. (1998). A cortical representation of the local visual environment. *Nature*, *392*, 598–601.
- Fink, G., Markowitsch, H., Reinkemeier, M., Bruckbauer, T., Kessler, J., & Heiss, W. (1996). Cerebral representation of one's own past: Neural networks involved in autobiographical memory. *The Journal of Neuroscience*, *16*, 4275.
- Fisher, N. I. (1993). *Statistical analysis of circular data*. Cambridge, England: Cambridge University Press.
- Freeman, W., & Schneider, W. (1982). Changes in spatial patterns of rabbit olfactory EEG with conditioning to odors. *Psychophysiology*, *19*, 44–56.
- Fries, P. (2009). Neuronal gamma-band synchronization as a fundamental process in cortical computation. *Annual Review of Neuroscience*, *32*, 209–224.
- Gilboa, A., Winocur, G., Grady, C., Hevenor, S., & Moscovitch, M. (2004). Remembering our past: Functional neuroanatomy of recollection of recent and very remote personal events. *Cerebral Cortex*, *14*, 1214.
- Gloor, P. (1990). Experiential phenomena of temporal lobe epilepsy: Facts and hypotheses. *Brain*, *113*, 1673.
- Gloor, P., Olivier, A., Quesney, L., Andermann, F., & Horowitz, S. (1982). The role of the limbic system in experiential phenomena of temporal lobe epilepsy. *Annals of Neurology*, *12*, 129–144.
- Halgren, E., Walter, R., Cherlow, D., & Crandall, P. (1978). Mental phenomena evoked by electrical stimulation of the human hippocampal formation and amygdala. *Brain*, *101*, 83.
- Harrison, S., & Tong, F. (2009). Decoding reveals the contents of visual working memory in early visual areas. *Nature*, *458*, 632–635.
- Jackson, J. (1879). On affection of speech from disease of the brain. *Brain*, *2*, 323.
- Jacobs, J., & Kahana, M. J. (2009). Neural representations of individual stimuli in humans revealed by gamma-band ECoG activity. *Journal of Neuroscience*, *29*, 10203–10214.
- Jacobs, J., & Kahana, M. J. (2010). Direct brain recordings fuel advances in cognitive electrophysiology. *Trends in Cognitive Sciences*, *14*, 162–171.
- Jacobs, J., Kahana, M. J., Ekstrom, A. D., & Fried, I. (2007). Brain oscillations control timing of single-neuron activity in humans. *Journal of Neuroscience*, *27*, 3839–3844.
- Jacobs, J., Manning, J., & Kahana, M. (2010). Response to Miller: “Broadband” vs. “high gamma” electrocorticographic signals. *Journal of Neuroscience*, *30*. Available on-line at www.jneurosci.org.
- Jensen, O., & Lisman, J. E. (2005). Hippocampal sequence-encoding driven by a cortical multi-item working memory buffer. *Trends in Neurosciences*, *28*, 67–72.
- Jerbi, K., Ossandon, T., Hamame, C., Senova, S., Dalal, S., & Jung, J. (2009). Task-related gamma-band dynamics from an intracerebral perspective: Review and implications for surface EEG and MEG. *Human Brain Mapping*, *30*, 1758–1771.
- Kanwisher, N., McDermott, J., & Chun, M. M. (1997). The fusiform face area: A module in human extrastriate cortex specialized for face perception. *Journal of Neuroscience*, *17*, 4302.
- Kinoshita, M., Ikeda, A., Matsumoto, R., Begum, T., Usui, K., & Yamamoto, J. (2004). Electric stimulation on human cortex suppresses fast cortical activity and epileptic spikes. *Epilepsia*, *45*, 787–791.
- Kopell, N., Whittington, M., & Kramer, M. (2011). Neuronal assembly dynamics in the beta1 frequency range permits short-term memory. *Proceedings of the National Academy of Sciences, U.S.A.*, *108*, 3779.
- Kriegeskorte, N., Formisano, E., Sorger, B., & Goebel, R. (2007). Individual faces elicit distinct response patterns in human anterior temporal cortex. *Proceedings of the National Academy of Sciences, U.S.A.*, *104*, 20600.
- Lachaux, J. P., Jung, J., Mainy, N., Dreher, J. C., Bertrand, O., & Bacia, M. (2008). Silence is golden: Transient neural deactivation in the prefrontal cortex during attentive reading. *Cerebral Cortex*, *18*, 443–450.
- Lakatos, P., Shah, A., Knuth, K., Ulbert, I., Karmos, G., & Schroeder, C. (2005). An oscillatory hierarchy controlling neuronal excitability and stimulus processing

- in the auditory cortex. *Journal of Neurophysiology*, *3*, 1904–1911.
- Lee, H., Simpson, G., Logothetis, N., & Rainer, G. (2005). Phase locking of single neuron activity to theta oscillations during working memory in monkey extrastriate visual cortex. *Neuron*, *45*, 147–156.
- Logothetis, N., Augath, M., Murayama, Y., Rauch, A., Sultan, F., & Goense, J. (2010). The effects of electrical microstimulation on cortical signal propagation. *Nature Neuroscience*, *13*, 1283–1291.
- Luck, S. J. (2005). *An introduction to the event-related potential technique*. Cambridge, MA: MIT Press.
- Manning, J. R., Jacobs, J., Fried, I., & Kahana, M. (2009). Broadband shifts in LFP power spectra are correlated with single-neuron spiking in humans. *Journal of Neuroscience*, *29*, 13613–13620.
- Martin, A., & Chao, L. (2001). Semantic memory and the brain: Structure and processes. *Current Opinion in Neurobiology*, *11*, 194–201.
- Miller, K., Leuthardt, E. C., Schalk, G., Rao, R. P. N., Anderson, N. R., & Moran, D. W. (2007). Spectral changes in cortical surface potentials during motor movement. *Journal of Neuroscience*, *27*, 2424.
- Miller, K., Sorensen, L., Ojemann, J., & den Nijs, M. (2009). Power-law scaling in the brain surface electric potential. *PLoS Computational Biology*, *5*, e1000609.
- Mitchell, T., Shinkareva, S., Carlson, A., Chang, K., Malave, V., & Mason, R. (2008). Predicting human brain activity associated with the meanings of nouns. *Science*, *320*, 1191.
- Mormann, F., Fell, J., Axmacher, N., Weber, B., Lehnertz, K., & Elger, C. (2005). Phase/amplitude reset and theta-gamma interaction in the human medial temporal lobe during a continuous word recognition memory task. *Hippocampus*, *15*, 890–900.
- Nobre, A., Allison, T., & McCarthy, G. (1994). Word recognition in the human inferior temporal lobe. *Nature*, *372*, 260–263.
- Ojemann, G. (1991). Cortical organization of language. *Journal of Neuroscience*, *11*, 2281.
- Penfield, W. (1938). The cerebral cortex in man: I. The cerebral cortex and consciousness. *Archives of Neurology & Psychiatry*, *40*, 417.
- Penfield, W. (1958). Some mechanisms of consciousness discovered during electrical stimulation of the brain. *Proceedings of the National Academy of Sciences, U.S.A.*, *44*, 51.
- Penfield, W. (1975). *The mystery of the mind*. Princeton, NJ: Princeton University Press.
- Penfield, W., & Boldrey, E. (1937). Somatic motor and sensory representation in the cerebral cortex of man as studied by electrical stimulation. *Brain*, *60*, 389–443.
- Penfield, W., & Perot, P. (1963). The brain's record of auditory and visual experience. *Brain*, *86*, 595–696.
- Penny, W., Duzel, E., Miller, K., & Ojemann, J. (2008). Testing for nested oscillation. *Journal of Neuroscience Methods*, *174*, 50–61.
- Piefke, M., Weiss, P., Zilles, K., Markowitsch, H., & Fink, G. (2003). Differential remoteness and emotional tone modulate the neural correlates of autobiographical memory. *Brain*, *126*, 650.
- Polyn, S. M., Natu, V. S., Cohen, J. D., & Norman, K. A. (2005). Category-specific cortical activity precedes retrieval during memory search. *Science*, *310*, 1963–1966.
- Quiroga, R. Q., Reddy, L., Kreiman, G., Koch, C., & Fried, I. (2005). Invariant visual representation by single neurons in the human brain. *Nature*, *435*, 1102–1107.
- Raghavachari, S., Rizzuto, D. S., Caplan, J. B., Kirsch, M. P., Bourgeois, B., & Madsen, J. R. (2001). Gating of human theta oscillations by a working memory task. *Journal of Neuroscience*, *21*, 3175–3183.
- Ray, S., & Maunsell, J. (2011). Different origins of gamma rhythm and high-gamma activity in macaque visual cortex. *PLoS Biology*, *9*, e1000610.
- Sederberg, P. B., Kahana, M. J., Howard, M. W., Donner, E. J., & Madsen, J. R. (2003). Theta and gamma oscillations during encoding predict subsequent recall. *Journal of Neuroscience*, *23*, 10809–10814.
- Selimbeyoglu, A., & Parvizi, J. (2010). Electrical stimulation of the human brain: Perceptual and behavioral phenomena reported in the old and new literature. *Frontiers in Human Neuroscience*, *4*, 46.
- Shmuel, A., Augath, M., Oeltermann, A., & Logothetis, N. (2006). Negative functional MRI response correlates with decreases in neuronal activity in monkey visual area V1. *Nature Neuroscience*, *9*, 569–577.
- Siegel, M., Warden, M., & Miller, E. (2009). Phase-dependent neuronal coding of objects in short-term memory. *Proceedings of the National Academy of Sciences, U.S.A.*, *106*, 21341.
- Sirota, A., Montgomery, S., Fujisawa, S., Isomura, Y., Zugaro, M., & Buzsáki, G. (2008). Entrainment of neocortical neurons and gamma oscillations by the hippocampal theta rhythm. *Neuron*, *60*, 683–697.
- Spencer, S. (1994). The relative contributions of MRI, SPECT, and PET imaging in epilepsy. *Epilepsia*, *35*(Suppl. 6), S72–S89.
- Svoboda, E., McKinnon, M., & Levine, B. (2006). The functional neuroanatomy of autobiographical memory: A meta-analysis. *Neuropsychologia*, *44*, 2189–2208.
- Tort, A., Kramer, M., Thorn, C., Gibson, D., Kubota, Y., & Graybiel, A. (2008). Dynamic cross-frequency couplings of local field potential oscillations in rat striatum and hippocampus during performance of a T-maze task. *Proceedings of the National Academy of Sciences, U.S.A.*, *105*, 20517.
- Tovee, M., Rolls, E., Treves, A., & Bellis, R. (1993). Information encoding and the responses of single neurons in the primate temporal visual cortex. *Journal of Neurophysiology*, *70*, 640–654.
- Tsao, D., Moeller, S., & Freiwald, W. (2008). Comparing face patch systems in macaques and humans. *Proceedings of the National Academy of Sciences, U.S.A.*, *105*, 19514.
- Van Essen, D., & Maunsell, J. (1983). Hierarchical organization and functional streams in the visual cortex. *Trends in Neurosciences*, *6*, 370–375.
- Vidal, J. R., Ossandon, T., Jerbi, K., Dalal, S. S., Minotti, L., & Ryvlin, P. (2010). Category-specific visual responses: An intracranial study comparing gamma, beta, alpha and ERP response selectivity. *Frontiers in Human Neuroscience*, *4*, 12.
- Voytek, B., Canolty, R., Shestyuk, A., Crone, N., Parvizi, J., & Knight, R. (2010). Shifts in gamma phase-amplitude coupling frequency from theta to alpha over posterior cortex during visual tasks. *Frontiers in Human Neuroscience*, *4*, Article 191.