

SARS-CoV-2 surrogate (*Phi6*) environmental persistence within free-living amoebae

Rafik Dey ^{a,*}, Elena Dlusskaya ^b and Nicholas J. Ashbolt ^c

^a School of Public Health, University of Alberta, Edmonton, AB, Canada

^b Faculty of Agricultural, Life & Environmental Sciences, University of Alberta, Edmonton, AB, Canada

^c Faculty of Science and Engineering, Southern Cross University, Gold Coast, QLD, Australia

*Corresponding author. E-mail: rafik@ualberta.ca

 RD, 0000-0002-4532-1751; ED, 0000-0003-4027-9221; NJA, 0000-0002-3853-0096

ABSTRACT

The reported persistence of SARS-CoV-2 virions in aquatic environments highlights the need to better understand potential mechanisms that may prolong its dissemination. We evaluated the possibility that amoebae might serve as transport hosts by studying the interaction of the enveloped bacteriophage Phi6, as a potential surrogate along with one of the most common amoebae in engineered aquatic environments, *Vermamoeba vermiformis*. Using microscopy, imaging flow cytometry and bacteriophage cell culture, our results imply that the SARS-CoV-2 surrogate triggers amoebic mitochondria and induced apoptosis to promote viral persistence in trophozoites. Furthermore, virus-infected amoebae were still infectious after 2 months within FLA cysts. These results suggest that amoebae could contribute to the environmental persistence of SARS-CoV-2, including disinfection processes. In addition, amoebae could be a successful model system for understanding respiratory virus-eukaryotic biology at the cellular and molecular levels.

Key words: apoptosis, bacteriophage Phi6, environmental persistence, free-living amoebae, mitochondria, SARS-CoV-2, transmission

HIGHLIGHTS

- Amoebic mitochondria serve as a support organelle platform for the SARS-CoV-2 surrogate persistence.
- Long-term stability of RNA enveloped viruses in amoeba-forming cysts.
- Free-living amoebae as a potential vector and environmental reservoir for RNA enveloped viruses.

INTRODUCTION

Free-living amoebae (FLA) are ubiquitous in natural and engineered aquatic and moist environments (Jadin 1973; Rodríguez-Zaragoza 1994; Lau & Ashbolt 2009; Samba-Louaka *et al.* 2019), and known natural environmental reservoirs for a plethora of respiratory pathogens and a vector of human water-associated infections (Rowbotham 1986; Essig *et al.* 1997; la Scola *et al.* 2003; Lamoth & Greub 2010; Bousbia *et al.* 2013; Santos-Montañez *et al.* 2015; Taylor-Mulneix *et al.* 2017). Increasing evidence suggests that FLA are potential environmental reservoirs for human viruses (enteric and respiratory) (Danes & Cerva 1981; la Scola *et al.* 2005; Mattana *et al.* 2006; Scheid & Schwarzenberger 2012; Boratto *et al.* 2014; Hsueh & Gibson 2015; Atanasova *et al.* 2018; Folkins *et al.* 2020), but how the virus infect and survive in amoeba hosts is unclear. To date, there is also no epidemiologic evidence for waterborne transmission of COVID-19, unlike SARS-CoV-1 demonstrated via wastewater aerosols (Yu *et al.* 2014). However, we have recently reported that enveloped human respiratory syncytial virus (RSV) persists within various FLA genera and could be transmitted via extracellular amoebal-vesicles in the respiratory size range (Dey *et al.* 2021).

While the environmental persistence underlying severe acute respiratory syndrome coronavirus 2 (SARS-CoV-2-induced COVID-19) is subject to intense investigation (Chin *et al.* 2020; Fukuta *et al.* 2021; Sala-Comorera *et al.* 2021), any potential role played by FLA is unreported. Since viral RNA of SARS-CoV-2 have been detected in various waste/water systems (Ahmed *et al.* 2020; Bivins *et al.* 2020; Haramoto *et al.* 2020; la Rosa *et al.* 2020; Rimoldi *et al.* 2020; Wu *et al.* 2020a; de Oliveira *et al.* 2021), and the presence of biota increased the aquatic persistence of infectious SARS-CoV-2 (Sala-Comorera

This is an Open Access article distributed under the terms of the Creative Commons Attribution Licence (CC BY 4.0), which permits copying, adaptation and redistribution, provided the original work is properly cited (<http://creativecommons.org/licenses/by/4.0/>).

et al. 2021), we considered the possibility that amoebae might serve as natural hosts and increase its persistence for environmental dispersal.

We tested the amoeba-host hypothesis by studying the interaction of the enveloped bacteriophage Phi6 surrogate, a dsRNA phage of the *Cystoviridae* family that has been a popular model for studying enveloped RNA viruses including coronaviruses SARS-CoV-1 and SARS-CoV-2 (Casanova & Weaver 2015; Aquino De Carvalho *et al.* 2017; Prussin *et al.* 2018; Silverman & Boehm 2020; di Novo *et al.* 2021; Ma *et al.* 2021; Pino *et al.* 2021; Vatter *et al.* 2021); and its association with one of the most common amoeba in human aquatic environments *Vermamoeba vermiformis* (Jadin 1973; de Moura *et al.* 1985; Bradbury 2014; Delafont *et al.* 2018).

MATERIALS AND METHODS

Propagation and purification of bacteriophages

Bacteriophages Phi6 (HER-102) and its host strain *Pseudomonas syringae* HB10Y#3 (HER-1102) were purchased from the Félix d'Hérelle Reference Center for Bacterial Viruses (Université Laval, QC, Canada). Bacteriophage Phi6 was propagated in the host strain; the host culture was grown in BBL Trypticase Soy Broth (BD, Ref# 211768) at 26 °C and 250 rpm. The overnight stock culture was added (20% v/v) to fresh Tryptic Soy Broth that also contained 5 mM of each CaCl₂ and MgCl₂ and incubated for 2 h. Then, the exponentially growing host was infected with the Phi6 bacteriophage, and the incubation was continued overnight without shaking. Overnight lysates were centrifuged at 4,000 g for 30 min to precipitate host cell debris and supernatant was filtered through a 0.22 mm syringe filter (Merck Millipore, REF # SLGS033SS) into a sterile Amicon Ultra 100 K centrifugal filter device (Merck Millipore, REF # UFC910024). The Ultra 100 K device was centrifuged again at 4,000 g for 20 min to remove growth media. The bacteriophage-containing retentate that remained on the filter part of the device (about 250 µL) was treated with DNase I (Roche Diagnostics, cat # 10104159001) to remove residual host DNA. Twenty-five microliters of 10× DNase I buffer (100 mM Tris HCl, pH 7.5, 25 mM MgCl₂, and 5 mM CaCl₂ in MQ water) and 2 µL of 2.5 mg/mL DNase I, dissolved in storage buffer (20% glycerol in 75 mM NaCl), were added and the retentate was incubated for 45 min at 37 °C. All chemicals were purchased from Sigma unless stated otherwise. After the incubation, bacteriophage was rinsed with 10 mL of 1× HyClone PBS (HyClone Laboratories, REF #SH30256.02) and resuspended in PBS to the original volume.

Amoebae growth conditions

The amoeba used in this study was *V. vermiformis* (ATCC 50237) isolated from a hospital cooling tower drain. Amoebae were grown in tissue culture flasks in SCGYEM (Serum-Casein-Glucose-Yeast-Extract-Medium: ATCC medium 1021) at 25 °C in a 5% CO₂ incubator. The trophozoites were maintained in exponential growth phase by sub-culturing every 3–4 days in fresh SCGYEM, and then harvested by tapping the flasks to dislodge surface-adhered cells and washed three times with sterile distilled water with centrifugation to remove carried-over nutrients in the supernatants. Experiments were carried out in 15 mL screw-cap tubes, using 10 mL of medium.

Phi6 infectivity assays

V. vermiformis and Phi6 were co-cultured at a ratio of 1:100 in conical Falcon tubes, vortexed to favour phages interaction with amoebae and then transferred to 6-well culture plates (Fisher Scientific 130185). After 72 h incubation at 30 °C, Phi6 phages were released from amoeba trophozoites by lysing the FLA by passing the sample through a sterile 20-gauge syringe needles (BD, Franklin lakes, USA 304827) five to six times. To assess the number of internalized phages, the viral titer (plaque-forming units per mL, PFU mL⁻¹) was employed and determined by double-layer agar assay as described by Fedorenko *et al.* (2020) with minor modification. Briefly, solid and soft trypticase soy agar was prepared from BBL Trypticase Soy Broth with the addition of 1.5 and 0.6% agar, respectively. Then, 0.015% of Triphenyltetrazolium Chloride was added to the sloppy agar to increase the contrast of the plaques against the host lawn due to the formation of pink-coloured formazan by the actively growing bacteria. The concentration of internalized phages was compared with a control of Phi6-only (without *V. vermiformis*). The total number of Phi6 phage (with or without FLA) was established by performing serial 10-fold dilutions of the co-culture medium containing lysed amoebae and phages that were subsequently spread in triplicate.

Data were analyzed by means of Student's *t*-test and are means ± SEM of three independent experiments.

Induction of cyst state in *V. vermiformis*

After incubating the phages with amoeba trophozoites for 24 h, amoebae cells were washed with PBS to remove extracellular and surface-bound phages and resuspended in 5 mL sterile distilled water in culture flasks and stored at 4 °C. After 2 months, aliquots from the amoeba cysts were collected for TEM analysis and the other aliquots from the same experimental samples were resuspended in tissue culture flasks in fresh SCGYEM medium at 25 °C for 72 h for a full trophozoites state recovery. The intracellular phage concentrations (PFU mL⁻¹) were estimated with the culture method as previously described.

Imaging flow cytometry analysis

Since staining with Acridine Orange (AO) is a reliable method for identifying RNA within cells by showing an intense red fluorescence (Keeble & Jay 1962; Doynikova & Vekshin 2019), Phi6 phages were pre-stained with AO (ThermoFisher A3568) for 10 min, after staining the phages were washed and filtered through an Amicon-Ultra-15 Ultracel™ 100 K centrifugal filter unit (EMD Millipore UFC910024) several times to remove residual AO. Unexposed amoebae to AO-Phi6 provided as a control to assess if any presence of autofluorescence in the AO channel (see Supplementary Material, Figure S1).

ImageStream® cytometry analysis and the instrument gating strategy for FLA was performed as previously described (Dey *et al.* 2019). Briefly, *V. vermiformis* trophozoites were infected for 24 h with AO-Phi6 at MOI of 100, washed and resuspended in PBS prior to processing through the ImageStream®X Mark II (Millipore Sigma). Cells were examined at 60× magnification. Analysis was performed using the IDEAS software (Amnis®, Seattle) and cells (fluorescent phages and amoebae) were identified based on bright-field morphology, size, and red fluorescence signal.

Transmission electron microscopy

V. vermiformis trophozoites were co-cultured with Phi6 at an MOI of 100 on Thermanox® cover slips (Thermo Fisher 174985). After decanting the medium, amoebae were fixed at room temperature with 2.5% glutaraldehyde and 0.1M sodium cacodylate buffer (Electron Microscopy Sciences 15960). The samples were submitted for processing at the imaging core at the University of Alberta, Faculty of Biological sciences. Sectioned and carbon-coated samples were observed with a Hitachi H-7650 transmission electron microscope.

RESULTS AND DISCUSSION

AO-Phi6 phages were shown by ImageStream® flow cytometry to be internalised within the amoeba (Figure 1(a)) and further examined by transmission electron microscopy (TEM). The phage particles were observed attachment at the amoeba cell surface and present within numerous *V. vermiformis* replicative phagosomes (Figure 1(b)). Like human RSV, an enveloped

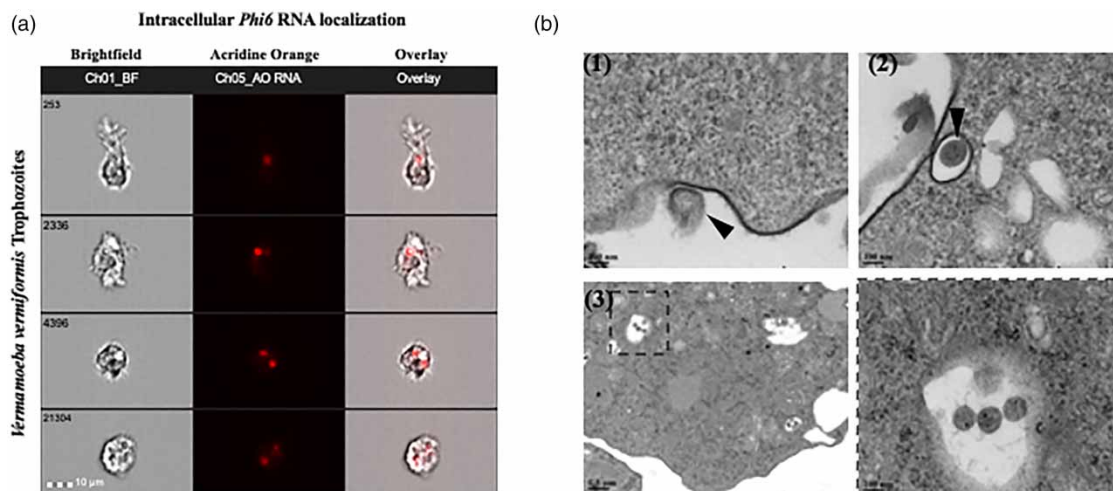


Figure 1 | Bacteriophage Phi6 internalization. (a) Localization of internalized AO-Phi6 RNA particles in live amoebae using ImageStream® flow cytometry. (b) Transmission electron micrographs of thin sections of *V. vermiformis* cells incubated with Phi6 phages for 6 h. Phi6 particles (black arrowheads) are seen at the cell surface (1), within cytoplasmic vesicle (2), and within food vacuoles (3).

human pathogen we have shown to subvert amoebal innate immunity (Dey *et al.* 2021), Phi6 altered the host mitochondrial ultrastructure at 24 h post-infection (Figure 2(a)), with swollen mitochondria and cristae disappearance by 48 h (Figure 2(b)). At 72 h post-infection, amoebae cells showed depletion of all organelles with characteristics of apoptotic cells (Figure 2(c)). Also present in Figure 2(c), are intracellular clusters of phages within apoptotic amoeba cytosol. Of note, similar results were obtained with the FLA *Willertia magna* and *Acanthamoeba polyphaga*, indicating that the observed phenomenon was not limited to a single amoebic species (see Supplementary Material, Figure S2). To determine if internalized phages remained infectious, we performed a quantitative analysis of the intracellular phage population at 72 h post-infection. The intracellular phages were released by lysing the amoebae and then used to infect their host bacteria for quantification of the recovered phages by titration analysis. The results revealed that the phages retained their infectious capacity during the 72 h incubation period with titres peaking at $\sim 10^6$ PFU mL^{-1} , at a similar infectivity to Phi6-only controls (Figure 2(d)).

Hence, the surrogate Phi6 appears to rapidly induce amoeba apoptosis by targeting their mitochondria in order to remain infectious within 'ghost' host cells. Given the bacterial origin of mitochondria, the high mutation rates and expanded host range of the RNA-Phi6 phage (Duffy *et al.* 2006; Ferris *et al.* 2007; Ford *et al.* 2014); our results imply that the amoebic mitochondria served as a support structure for Phi6 phage persistence. Mitochondria are dynamic multifunctional organelles involved in a variety of cellular and metabolic processes including ATP production, Ca^{2+} homeostasis, and programmed cell death (Twig *et al.* 2008). An increasing number of pathogens, including viruses and bacteria, have been shown to directly or indirectly alter mitochondrial function and dynamics leading to cell death (James & Martinou 2008; Ohta & Nishiyama 2011; Kim *et al.* 2013; Ding *et al.* 2017). Interestingly and like Phi6 phage, SARS-CoV-1 and SARS-CoV-2 also target mitochondrial functions to proliferate and subsequently disseminate by killing host cells (Yan *et al.* 2004; Bordi *et al.* 2006; Shi *et al.* 2014; Gordon *et al.* 2020; Singh *et al.* 2020; Wu *et al.* 2020b; Zhu *et al.* 2020; Flynn *et al.* 2021). Additionally, evidence of evolutionary affinity between cystoviruses (*Pseudomonas* bacteriophages) and the dsRNA viruses infecting diverse

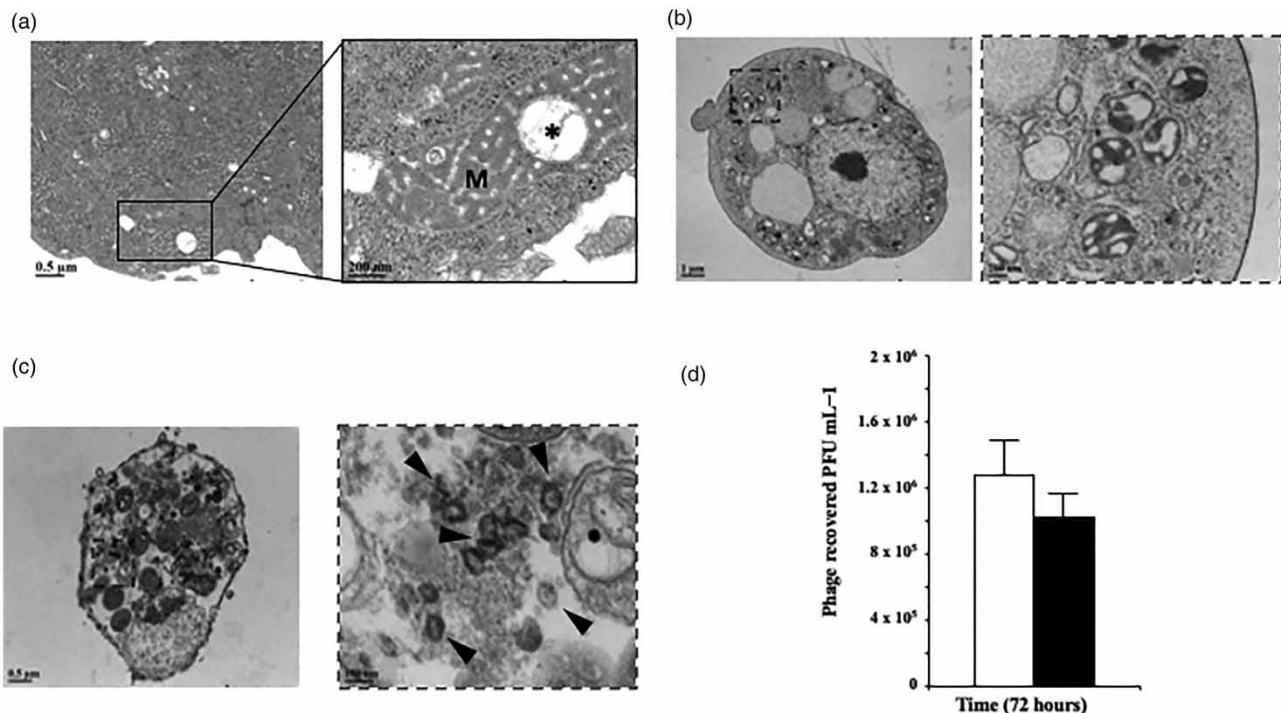


Figure 2 | *Phi6* infection induces mitochondrial alteration and cell apoptosis. Ultrastructure analysis of *Phi6*-infected *V. vermiformis* cells showing: (a) at 24 h post-infection, TEM of altered mitochondria (M) with dilated cristae and separation of the mitochondrial outer membrane (star). (b) The ultrastructure of various altered mitochondria and abnormal organelles after 48 h post-infection. (c) At 72 h post-infection, TEM showing apoptotic amoeba with depletion of all organelles. In the zoomed images, altered and swollen mitochondria with loss of cristae in infected cells are shown in (a and b). *Phi6* particles (black arrowheads) within apoptotic amoeba cell is also shown in (c). (d) Quantification of internalized *Phi6* phages from *V. vermiformis* trophozoites. Amoebae were incubated with phages for 72 h. Control *Phi6* alone (white bar) and *Phi6*-containing amoeba trophozoites (black bar) analyzed by plaque assay.

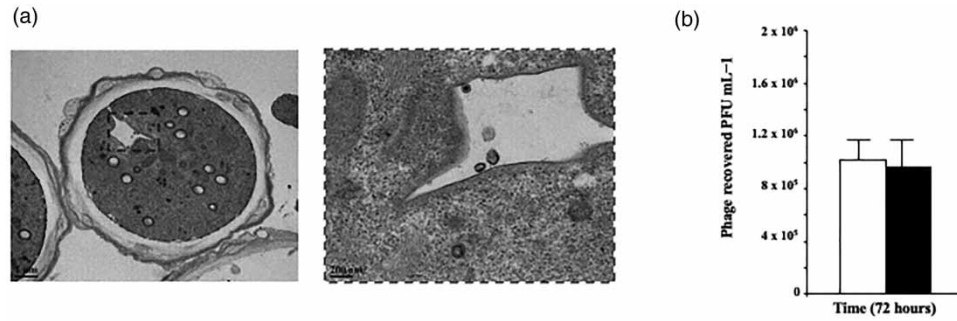


Figure 3 | Ultrastructure visualization and persistence of Phi6-containing amoeba cysts. (a) Transmission electron microscopy (TEM) of Phi6 particles contained within *V. vermiformis* cyst phagosome after 2 months of co-culture. (b) Infectivity assay of Phi6 phages from *V. vermiformis* cysts. Amoebae were incubated with phages for 2 months. Control Phi6 alone (white bar) and Phi6-containing amoeba cysts (black bar).

eukaryotic hosts has been presented (Poranen & Bamford 2012; el Omari *et al.* 2013; Pflug *et al.* 2014; Koonin *et al.* 2015; Wolf *et al.* 2018). Thus, complementary phylogenetic and comparative genomic analysis with human coronaviruses against their persistence within amoebae, and in particular, SARS-CoV-2 is needed. This subversion of amoebae innate immunity by Phi6 may have important implications for a better understanding of RNA enveloped viruses disease pathogenesis, which could make amoebae a suitable model system for understanding respiratory virus-eukaryotic biology at the cellular and molecular levels. Further studies are required to elucidate the precise mechanisms by which RNA viruses affect amoebic mitochondrial dynamics, initiate and regulate apoptotic cell death.

Since amoebic cysts are highly resistant to various harsh environmental stressors, thereby protecting their intracellular microbes and readily aerosolized to enhance dispersal from engineered water systems (Aksozek *et al.* 2002; Lambrecht *et al.* 2017; Borges *et al.* 2019), we also investigated the stability of Phi6 phage inside *V. vermiformis* cysts. TEM analysis showed that at 2 months after the infection vacuoles still contained infectious viruses in *V. vermiformis* cysts (Figure 3(a) and 3(b)). It has been shown that during viral respiratory diseases investigations, FLA cysts were isolated from the air where patients being nursed and from patients' upper respiratory tract (Wang & Feldman 1967; Kingston & Warhurst 1969). Consequently, it is reasonable to hypothesize that amoeba cysts may also be a vehicle and an intermediate environmental host for SARS-CoV-2 transmission through inhalation, and possibly also within the nasal-pharyngeal track where similar amoeba have long been known to reside (Skocil *et al.* 1972; Cabello-Vílchez *et al.* 2014). It is, therefore, conceivable that amoebae cysts containing infectious RNA viruses could be protected against disinfecting agents/conditions and easily dispersed via aerosols. Thus, future studies are necessary to explore these possibilities.

CONCLUSION

Here, we successfully demonstrate the persistence of an infectious SARS-CoV-2 surrogate (Phi6 phage) within active amoebal trophozoites and dormant cysts. Prospectively, viral respiratory pathogens persistence and stability could be maintained by colonizing amoebae in water systems. However, further research is required to confirm the comparability of the fate of Phi6 within amoebae with the viruses of interest (i.e., SARS-CoV-1 and SARS-CoV-2).

It is noteworthy that our work sheds light on the environmental fate of FLA-associated enveloped viruses and raises new questions regarding the persistence of human-pathogenic RNA viruses in nature. Our study also exemplifies the utility of including amoebae as an environmental reservoir when conducting risk assessment for emerging RNA enveloped viruses in aquatic environments.

ACKNOWLEDGEMENTS

These studies were supported by Alberta Innovates (grant #201300490), Alberta, and the Canadian Institute for Health Research (CIHR grant TGEHIPR 150713), Canada. We would like to thank Arlene Oatway for help with transmission electron microscopy (Microscopy Facility Biological Sciences, University of Alberta).

DATA AVAILABILITY STATEMENT

All relevant data are included in the paper or its Supplementary Information.

REFERENCES

- Ahmed, W., Angel, N., Edson, J., Bibby, K., Bivins, A., O'Brien, J. W., Choi, P. M., Kitajima, M., Simpson, S. L., Li, J., Tschärke, B., Verhagen, R., Smith, W. J. M., Zaugg, J., Dierens, L., Hugenholtz, P., Thomas, K. v. & Mueller, J. F. 2020 First confirmed detection of SARS-CoV-2 in untreated wastewater in Australia: a proof of concept for the wastewater surveillance of COVID-19 in the community. *Science of the Total Environment* **728**. <https://doi.org/10.1016/j.scitotenv.2020.138764>.
- Aksozek, A., McClellan, K., Howard, K., Niederkorn, J. Y. & Alizadeh, H. 2002 Resistance of *Acanthamoeba castellanii* cysts to physical, chemical, and radiological conditions. *Journal of Parasitology* **88**. [https://doi.org/10.1645/0022-3395\(2002\)088\[0621:roacct\]2.0.co;2](https://doi.org/10.1645/0022-3395(2002)088[0621:roacct]2.0.co;2).
- Aquino De Carvalho, N., Stachler, E. N., Cimabue, N. & Bibby, K. 2017 Evaluation of Phi6 persistence and suitability as an enveloped virus surrogate. *Environmental Science and Technology* **51**. <https://doi.org/10.1021/acs.est.7b01296>.
- Atanasova, N. D., Dey, R., Scott, C., Li, Q., Pang, X. L. & Ashbolt, N. J. 2018 Persistence of infectious enterovirus within free-living amoebae – a novel waterborne risk pathway? *Water Research* **144**. <https://doi.org/10.1016/j.watres.2018.07.023>.
- Bivins, A., Greaves, J., Fischer, R., Yinda, K. C., Ahmed, W., Kitajima, M., Munster, V. J. & Bibby, K. 2020 Persistence of SARS-CoV-2 in water and wastewater. *Environmental Science and Technology Letters* **7**. <https://doi.org/10.1021/acs.estlett.0c00730>.
- Boratto, P. V. M., Dornas, F. P., Andrade, K. R., Rodrigues, R., Peixoto, F., Silva, L. C. F., la Scola, B., Costa, A. O., de Almeida, G. M. F., Kroon, E. G. & Abrahão, J. S. 2014 Amoebas as mimivirus bunkers: increased resistance to UV light, heat and chemical biocides when viruses are carried by amoeba hosts. *Archives of Virology* **159**. <https://doi.org/10.1007/s00705-013-1924-z>.
- Bordi, L., Castilletti, C., Falasca, L., Ciccocanti, F., Calcaterra, S., Rozera, G., di Caro, A., Zaniratti, S., Rinaldi, A., Ippolito, G., Piacentini, M. & Capobianchi, M. R. 2006 Bcl-2 inhibits the caspase-dependent apoptosis induced by SARS-CoV without affecting virus replication kinetics. *Archives of Virology* **151**. <https://doi.org/10.1007/s00705-005-0632-8>.
- Borges, I., Rodrigues, R. A. L., Dornas, F. P., Almeida, G., Aquino, I., Bonjardim, C. A., Kroon, E. G., la Scola, B. & Abrahão, J. S. 2019 Trapping the enemy: *Vermamoeba vermiformis* circumvents *Faustovirus Mariensis* dissemination by enclosing viral progeny inside cysts. *Journal of Virology* **93**. <https://doi.org/10.1128/jvi.00312-19>.
- Bousbia, S., Papazian, L., Saux, P., Forel, J. M., Auffray, J. P., Martin, C., Raoult, D. & la Scola, B. 2013 Serologic prevalence of amoeba-associated microorganisms in intensive care unit pneumonia patients. *PLoS ONE* **8**. <https://doi.org/10.1371/journal.pone.0058111>.
- Bradbury, R. S. 2014 Free-living amoebae recovered from human stool samples in Strongyloides agar culture. *Journal of Clinical Microbiology*. <https://doi.org/10.1128/JCM.02738-13>.
- Cabello-Vílchez, A. M., Mena, R., Zuñiga, J., Cermeño, P., Martín-Navarro, C. M., González, A. C., López-Arencibia, A., Reyes-Batlle, M., Piñero, J. E., Valladares, B. & Lorenzo-Morales, J. 2014 Endosymbiotic *Mycobacterium chelonae* in a *Vermamoeba vermiformis* strain isolated from the nasal mucosa of an HIV patient in Lima, Peru. *Experimental Parasitology* **145**. <https://doi.org/10.1016/j.exppara.2014.02.014>.
- Casanova, L. M. & Weaver, S. R. 2015 Inactivation of an enveloped surrogate virus in human sewage. *Environmental Science and Technology Letters* **2**. <https://doi.org/10.1021/acs.estlett.5b00029>.
- Chin, A. W. H., Chu, J. T. S., Perera, M. R. A., Hui, K. P. Y., Yen, H.-L., Chan, M. C. W., Peiris, M. & Poon, L. L. M. 2020 Stability of SARS-CoV-2 in different environmental conditions. *The Lancet Microbe* **1**. [https://doi.org/10.1016/s2666-5247\(20\)30003-3](https://doi.org/10.1016/s2666-5247(20)30003-3).
- Danes, L. & Cerva, L. 1981 Survival of polioviruses and echoviruses in *Acanthamoeba castellanii* cultivated in vitro. *Journal of Hygiene Epidemiology Microbiology and Immunology* **25**, 169–74.
- de Moura, H., Salazar, H. C., Fernandes, O., Lisboa, D. C. & de Carvalho, F. G. 1985 Free-living amoebae in human bowel: evidence of parasitism. *Revista do Instituto de Medicina Tropical de Sao Paulo* **27**. <https://doi.org/10.1590/s0036-46651985000300007>.
- Delafont, V., Rodier, M. H., Maisonneuve, E. & Cateau, E. 2018 *Vermamoeba vermiformis*: a free-living amoeba of interest. *Microbial Ecology*. <https://doi.org/10.1007/s00248-018-1199-8>.
- de Oliveira, L. C., Torres-Franco, A. F., Lopes, B. C., Santos, B. S. Á. d. S., Costa, E. A., Costa, M. S., Reis, M. T. P., Melo, M. C., Polizzi, R. B., Teixeira, M. M. & Mota, C. R. 2021 Viability of SARS-CoV-2 in river water and wastewater at different temperatures and solids content. *Water Research* **195**. <https://doi.org/10.1016/j.watres.2021.117002>.
- Dey, R., Rieger, A. M., Stephens, C. & Ashbolt, N. J. 2019 Interactions of *Pseudomonas aeruginosa* with *Acanthamoeba polyphaga* observed by imaging flow cytometry. *Cytometry Part A* **95**. <https://doi.org/10.1002/cyto.a.23768>.
- Dey, R., Folkins, M. A. & Ashbolt, N. J. 2021 Extracellular amoebal-vesicles: potential transmission vehicles for respiratory viruses. *NPJ Biofilms and Microbiomes* **7**. <https://doi.org/10.1038/s41522-021-00201-y>.
- Ding, L., Buckwalter, J. A. & Martin, J. A. 2017 DAMPs synergize with cytokines or fibronectin fragment on inducing chondrolysis but lose effect when acting alone. *Mediators of Inflammation* **2017**. <https://doi.org/10.1155/2017/2642549>.
- di Novo, N. G., Carotenuto, A. R., Mensitieri, G., Fraldi, M. & Pugno, N. M. 2021 Modeling of virus survival time in respiratory droplets on surfaces: a new rational approach for antiviral strategies. *Frontiers in Materials* **8**. <https://doi.org/10.3389/fmats.2021.631723>.
- Doynikova, A. N. & Vekshin, N. L. 2019 Detection of RNA hydrolysis with binase by acridine orange fluorescence. *Applied Biochemistry and Microbiology* **55**. <https://doi.org/10.1134/S0003683819050028>.

- Duffy, S., Turner, P. E. & Burch, C. L. 2006 Pleiotropic costs of niche expansion in the RNA bacteriophage $\phi 6$. *Genetics* **172**. <https://doi.org/10.1534/genetics.105.051136>.
- el Omari, K., Sutton, G., Ravantti, J. J., Zhang, H., Walter, T. S., Grimes, J. M., Bamford, D. H., Stuart, D. I. & Mancini, E. J. 2013 Plate tectonics of virus shell assembly and reorganization in phage $\phi 8$, a distant relative of mammalian reoviruses. *Structure* **21**. <https://doi.org/10.1016/j.str.2013.06.017>.
- Essig, A., Heinemann, M., Simnacher, U. & Marre, R. 1997 Infection of *Acanthamoeba castellanii* by *Chlamydia pneumoniae*. *Applied and Environmental Microbiology* **63**. <https://doi.org/10.1128/aem.63.4.1396-1399.1997>.
- Fedorenko, A., Grinberg, M., Orevi, T. & Kashtan, N. 2020 Survival of the enveloped bacteriophage Phi6 (a surrogate for SARS-CoV-2) in evaporated saliva microdroplets deposited on glass surfaces. *Scientific Reports* **10**. <https://doi.org/10.1038/s41598-020-79625-z>.
- Ferris, M. T., Joyce, P. & Burch, C. L. 2007 High frequency of mutations that expand the host range of an RNA virus. *Genetics* **176**. <https://doi.org/10.1534/genetics.106.064634>.
- Flynn, R. A., Belk, J. A., Qi, Y., Yasumoto, Y., Wei, J., Alfajaro, M. M., Shi, Q., Mumbach, M. R., Limaye, A., DeWeirdt, P. C., Schmitz, C. O., Parker, K. R., Woo, E., Chang, H. Y., Horvath, T. L., Carette, J. E., Bertozzi, C. R., Wilen, C. B. & Satpathy, A. T. 2021 Discovery and functional interrogation of SARS-CoV-2 RNA-host protein interactions. *Cell* **184**. <https://doi.org/10.1016/j.cell.2021.03.012>.
- Folkens, M. A., Dey, R. & Ashbolt, N. J. 2020 Interactions between human reovirus and free-living amoebae: implications for enteric virus disinfection and aquatic persistence. *Environmental Science and Technology* **54**. <https://doi.org/10.1021/acs.est.0c02896>.
- Ford, B. E., Sun, B., Carpino, J., Chapler, E. S., Ching, J., Choi, Y., Jhun, K., Kim, J. D., Lallo, G. G., Morgenstern, R., Singh, S., Theja, S. & Dennehy, J. J. 2014 Frequency and fitness consequences of bacteriophage $\phi 6$ host range mutations. *PLoS ONE* **9**. <https://doi.org/10.1371/journal.pone.0113078>.
- Fukuta, M., Mao, Z. Q., Morita, K. & Moi, M. L. 2021 Stability and infectivity of SARS-CoV-2 and viral RNA in water, commercial beverages, and bodily fluids. *Frontiers in Microbiology* **12**. <https://doi.org/10.3389/fmicb.2021.667956>.
- Gordon, D. E., Jang, G. M., Bouhaddou, M., Xu, J., Obernier, K., White, K. M., O'Meara, M. J., Rezelj, V. v., Guo, J. Z., Swaney, D. L., Tummino, T. A., Hüttenhain, R., Kaake, R. M., Richards, A. L., Tutuncuoglu, B., Fournier, H., Batra, J., Haas, K., Modak, M., Kim, M., Haas, P., Polacco, B. J., Braberg, H., Fabius, J. M., Eckhardt, M., Soucheray, M., Bennett, M. J., Cakir, M., McGregor, M. J., Li, Q., Meyer, B., Roesch, F., Vallet, T., MacKain, A., Miorin, L., Moreno, E., Naing, Z. Z. C., Zhou, Y., Peng, S., Shi, Y., Zhang, Z., Shen, W., Kirby, I. T., Melnyk, J. E., Chirba, J. S., Lou, K., Dai, S. A., Barrio-Hernandez, I., Memon, D., Hernandez-Armenta, C., Lyu, J., Mathy, C. J. P., Perica, T., Pilla, K. B., Ganesan, S. J., Saltzberg, D. J., Rakesh, R., Liu, X., Rosenthal, S. B., Calviello, L., Venkataramanan, S., Liboy-Lugo, J., Lin, Y., Huang, X. P., Liu, Y. F., Wankowicz, S. A., Bohn, M., Safari, M., Ugar, F. S., Koh, C., Savar, N. S., Tran, Q. D., Shengjuler, D., Fletcher, S. J., O'Neal, M. C., Cai, Y., Chang, J. C. J., Broadhurst, D. J., Klippsten, S., Sharp, P. P., Wenzell, N. A., Kuzuoglu-Ozturk, D., Wang, H. Y., Trenker, R., Young, J. M., Cavero, D. A., Hiatt, J., Roth, T. L., Rathore, U., Subramanian, A., Noack, J., Hubert, M., Stroud, R. M., Frankel, A. D., Rosenberg, O. S., Verba, K. A., Agard, D. A., Ott, M., Emerman, M., Jura, N., von Zastrow, M., Verdini, E., Ashworth, A., Schwartz, O., d'Enfert, C., Mukherjee, S., Jacobson, M., Malik, H. S., Fujimori, D. G., Ideker, T., Craik, C. S., Floor, S. N., Fraser, J. S., Gross, J. D., Sali, A., Roth, B. L., Ruggero, D., Taunton, J., Kortemme, T., Beltrao, P., Vignuzzi, M., García-Sastre, A., Shokat, K. M., Shoichet, B. K. & Krogan, N. J. 2020 A SARS-CoV-2 protein interaction map reveals targets for drug repurposing. *Nature* **583**. <https://doi.org/10.1038/s41586-020-2286-9>.
- Haramoto, E., Malla, B., Thakali, O. & Kitajima, M. 2020 First environmental surveillance for the presence of SARS-CoV-2 RNA in wastewater and river water in Japan. *Science of the Total Environment* **737**. <https://doi.org/10.1016/j.scitotenv.2020.140405>.
- Hsueh, T. Y. & Gibson, K. E. 2015 Interactions between human norovirus surrogates and *Acanthamoeba* spp. *Applied and Environmental Microbiology* **81**. <https://doi.org/10.1128/AEM.00649-15>.
- Jadin, J. B. 1973 Hypothesis about adaptation to man and animals of amoebae of the limax group. *Parasite* **48**. <https://doi.org/10.1051/parasite/1973482199>.
- James, D. I. & Martinou, J. C. 2008 Mitochondrial dynamics and apoptosis: a painful separation. *Developmental Cell*. <https://doi.org/10.1016/j.devcel.2008.08.011>.
- Keeble, S. A. & Jay, R. F. 1962 Fluorescent staining for the differentiation of intracellular ribonucleic acid and deoxyribonucleic acid. *Nature* **193**. <https://doi.org/10.1038/193695a0>.
- Kim, S. J., Khan, M., Quan, J., Till, A., Subramani, S. & Siddiqui, A. 2013 Hepatitis B virus disrupts mitochondrial dynamics: induces fission and mitophagy to attenuate apoptosis. *PLoS Pathogens* **9**. <https://doi.org/10.1371/journal.ppat.1003722>.
- Kingston, D. & Warhurst, D. C. 1969 Isolation of amoebae from the air. *Journal of Medical Microbiology* **2**. <https://doi.org/10.1099/00222615-2-1-27>.
- Koonin, E. v., Dolja, V. v. & Krupovic, M. 2015 Origins and evolution of viruses of eukaryotes: the ultimate modularity. *Virology*. <https://doi.org/10.1016/j.virol.2015.02.039>.
- Lambrecht, E., Baré, J., Sabbe, K. & Houf, K. 2017 Impact of *Acanthamoeba* cysts on stress resistance of *Salmonella enterica* Serovar Typhimurium, *Yersinia enterocolitica* 4/O:3, *Listeria monocytogenes* 1/2a, and *Escherichia coli* O:26. *Applied and Environmental Microbiology* **83**. <https://doi.org/10.1128/AEM.00754-17>.
- Lamoth, F. & Greub, G. 2010 Amoebal pathogens as emerging causal agents of pneumonia. *FEMS Microbiology Reviews*. <https://doi.org/10.1111/j.1574-6976.2009.00207.x>.
- la Rosa, G., Iaconelli, M., Mancini, P., Bonanno Ferraro, G., Veneri, C., Bonadonna, L., Lucentini, L. & Suffredini, E. 2020 First detection of SARS-CoV-2 in untreated wastewaters in Italy. *Science of the Total Environment* **736**. <https://doi.org/10.1016/j.scitotenv.2020.139652>.

- la Scola, B., Boyadjiev, I., Greub, G., Khamis, A., Martin, C. & Raoult, D. 2003 Amoeba-resisting bacteria and ventilator-associated pneumonia. *Emerging Infectious Diseases* **9**. <https://doi.org/10.3201/eid0907.030065>.
- la Scola, B., Marrie, T. J., Auffray, J. P. & Raoult, D. 2005 Mimivirus in pneumonia patients. *Emerging Infectious Diseases* **11**. <https://doi.org/10.3201/eid1103.040538>.
- Lau, H. Y. & Ashbolt, N. J. 2009 The role of biofilms and protozoa in legionella pathogenesis: implications for drinking water. *Journal of Applied Microbiology*. <https://doi.org/10.1111/j.1365-2672.2009.04208.x>.
- Ma, B., Linden, Y. S., Gundy, P. M., Gerba, C. P., Sobsey, M. D. & Linden, K. G. 2021 Inactivation of coronaviruses and phage phi6 from irradiation across UVC wavelengths. *Environmental Science and Technology Letters* **8**. <https://doi.org/10.1021/acs.estlett.1c00178>.
- Mattana, A., Serra, C., Mariotti, E., Delogu, G., Fiori, P. L. & Cappuccinelli, P. 2006 *Acanthamoeba castellanii* promotion of in vitro survival and transmission of coxsackie B3 viruses. *Eukaryotic Cell* **5**. <https://doi.org/10.1128/EC.5.4.665-671.2006>.
- Ohta, A. & Nishiyama, Y. 2011 Mitochondria and viruses. *Mitochondrion*. <https://doi.org/10.1016/j.mito.2010.08.006>.
- Pflug, A., Guilligay, D., Reich, S. & Cusack, S. 2014 Structure of influenza A polymerase bound to the viral RNA promoter. *Nature* **516**. <https://doi.org/10.1038/nature14008>.
- Pino, N. J., Rodriguez, D. C., Cano, L. C. & Rodriguez, A. 2021 Detection of SARS-CoV-2 in wastewater is influenced by sampling time, concentration method, and target analyzed. *Journal of Water and Health*. <https://doi.org/10.2166/wh.2021.133>.
- Poranen, M. M. & Bamford, D. H. 2012 Assembly of large icosahedral double-stranded RNA viruses. *Advances in Experimental Medicine and Biology* **726**. https://doi.org/10.1007/978-1-4614-0980-9_17.
- Prussin, A. J., Schwake, D. O., Lin, K., Gallagher, D. L., Buttling, L. & Marr, L. C. 2018 Survival of the enveloped virus phi6 in droplets as a function of relative humidity, absolute humidity, and temperature. *Applied and Environmental Microbiology* **84**. <https://doi.org/10.1128/AEM.00551-18>.
- Rimoldi, S. G., Stefani, F., Gigantiello, A., Polesello, S., Comandatore, F., Mileto, D., Maresca, M., Longobardi, C., Mancon, A., Romeri, F., Pagani, C., Cappelli, F., Roscioli, C., Moja, L., Gismondo, M. R. & Salerno, F. 2020 Presence and infectivity of SARS-CoV-2 virus in wastewaters and rivers. *Science of the Total Environment* **744**. <https://doi.org/10.1016/j.scitotenv.2020.140911>.
- Rodríguez-Zaragoza, S. 1994 Ecology of free-living amoebae. *Critical Reviews in Microbiology* **20**. <https://doi.org/10.3109/10408419409114556>.
- Rowbotham, T. J. 1986 Current views on the relationships between amoebae, legionellae and man. *Israel Journal of Medical Sciences* **22**, 678–689.
- Sala-Comorera, L., Reynolds, L. J., Martin, N. A., O'Sullivan, J. J., Meijer, W. G. & Fletcher, N. F. 2021 Decay of infectious SARS-CoV-2 and surrogates in aquatic environments. *Water Research* **201**. <https://doi.org/10.1016/j.watres.2021.117090>.
- Samba-Louaka, A., Delafont, V., Rodier, M. H., Cateau, E. & Héchard, Y. 2019 Free-living amoebae and squatters in the wild: ecological and molecular features. *FEMS Microbiology Reviews*. <https://doi.org/10.1093/femsre/fuz011>.
- Santos-Montañez, J., Benavides-Montañón, J. A., Hinz, A. K. & Vadyvaloo, V. 2015 *Yersinia pseudotuberculosis* IP32953 survives and replicates in trophozoites and persists in cysts of *Acanthamoeba castellanii*. *FEMS Microbiology Letters* **362**. <https://doi.org/10.1093/femsle/fnv091>.
- Scheid, P. & Schwarzenberger, R. 2012 *Acanthamoeba* spp. as vehicle and reservoir of adenoviruses. *Parasitology Research* **111**. <https://doi.org/10.1007/s00436-012-2828-7>.
- Shi, C.-S., Qi, H.-Y., Boularan, C., Huang, N.-N., Abu-Asab, M., Shelhamer, J. H. & Kehrl, J. H. 2014 SARS-coronavirus open reading frame-9b suppresses innate immunity by targeting mitochondria and the MAVS/TRAF3/TRAF6 signalosome. *The Journal of Immunology* **193**. <https://doi.org/10.4049/jimmunol.1303196>.
- Silverman, A. I. & Boehm, A. B. 2020 Systematic review and meta-analysis of the persistence and disinfection of human coronaviruses and their viral surrogates in water and wastewater. *Environmental Science and Technology Letters*. <https://doi.org/10.1021/acs.estlett.0c00313>.
- Singh, K. K., Chaubey, G., Chen, J. Y. & Suravajhala, P. 2020 Decoding SARS-CoV-2 hijacking of host mitochondria in Covid-19 pathogenesis. *American Journal of Physiology – Cell Physiology*. <https://doi.org/10.1152/ajpcell.00224.2020>.
- Skocil, V., Dvorák, R., Stěrba, J., Slajs, J., Serbus, C. & Cerva, L. 1972 Epidemiological study of the incidence of amoebas of the limax group in military communities. V. Relation between the presence of amoebas of the limax group in nasal swabs and a pathological finding in nasal mucosa. *Journal of Hygiene Epidemiology Microbiology and Immunology* **16**, 101–106.
- Taylor-Mulneix, D. L., Soumana, I. H., Linz, B. & Harvill, E. T. 2017 Evolution of *Bordetellae* from environmental microbes to human respiratory pathogens: amoebae as a missing link. *Frontiers in Cellular and Infection Microbiology* **7**. <https://doi.org/10.3389/fcimb.2017.00510>.
- Twig, G., Elorza, A., Molina, A. J. A., Mohamed, H., Wikstrom, J. D., Walzer, G., Stiles, L., Haigh, S. E., Katz, S., Las, G., Alroy, J., Wu, M., Py, B. F., Yuan, J., Deeney, J. T., Corkey, B. E. & Shirihai, O. S. 2008 Fission and selective fusion govern mitochondrial segregation and elimination by autophagy. *EMBO Journal* **27**. <https://doi.org/10.1038/sj.emboj.7601963>.
- Vatter, P., Hoenes, K. & Hessling, M. 2021 Photoinactivation of the coronavirus surrogate phi6 by visible light. *Photochemistry and Photobiology* **97**. <https://doi.org/10.1111/php.13352>.
- Wang, S. S. & Feldman, H. A. 1967 Isolation of *Hartmannella* species from human throats. *New England Journal of Medicine* **277**. <https://doi.org/10.1056/nejm196711302772204>.
- Wolf, Y. I., Kazlauskas, D., Iranzo, J., Lucía-Sanz, A., Kuhn, J. H., Krupovic, M., Dolja, V. v. & Koonin, E. v. 2018 Origins and evolution of the global RNA virome. *mBio* **9**. <https://doi.org/10.1128/mBio.02329-18>.

- Wu, F., Zhang, J., Xiao, A., Gu, X., Lee, W. L., Armas, F., Kauffman, K., Hanage, W., Matus, M., Ghaeli, N., Endo, N., Duvallet, C., Poyet, M., Moniz, K., Washburne, A. D., Erickson, T. B., Chai, P. R., Thompson, J. & Alm, E. J. 2020a SARS-CoV-2 titers in wastewater are higher than expected from clinically confirmed cases. *mSystems* **5**. <https://doi.org/10.1128/msystems.00614-20>.
- Wu, K. E., Fazal, F. M., Parker, K. R., Zou, J. & Chang, H. Y. 2020b RNA-GPS Predicts SARS-CoV-2 RNA residency to host mitochondria and nucleolus. *Cell Systems* **11**. <https://doi.org/10.1016/j.cels.2020.06.008>.
- Yan, H., Xiao, G., Zhang, J., Hu, Y., Yuan, F., Cole, D. K., Zheng, C. & Gao, G. F. 2004 SARS coronavirus induces apoptosis in Vero E6 cells. *Journal of Medical Virology* **73**. <https://doi.org/10.1002/jmv.20094>.
- Yu, I. T. S., Qiu, H., Tse, L. A. & Wong, T. W. 2014 Severe acute respiratory syndrome beyond Amoy Gardens: completing the incomplete legacy. *Clinical Infectious Diseases* **58**. <https://doi.org/10.1093/cid/cit797>.
- Zhu, N., Wang, W., Liu, Z., Liang, C., Wang, W., Ye, F., Huang, B., Zhao, L., Wang, H., Zhou, W., Deng, Y., Mao, L., Su, C., Qiang, G., Jiang, T., Zhao, J., Wu, G., Song, J. & Tan, W. 2020 Morphogenesis and cytopathic effect of SARS-CoV-2 infection in human airway epithelial cells. *Nature Communications* **11**. <https://doi.org/10.1038/s41467-020-17796-z>.

First received 21 July 2021; accepted in revised form 12 September 2021. Available online 24 September 2021