


## Phytoremediation in sustainable wastewater management: an eco-friendly review of current techniques and future prospects

Madhuben Sharma, Sameeksha Rawat \* and Ajay Rautela

School of Advanced Engineering, University of Petroleum and Energy Studies, Bidholi, Energy Acres, Dehradun, Uttarakhand 248007, India

\*Corresponding author. E-mail: sameeksha712rawat@gmail.com; sameeksha.rawat@ddn.upes.ac.in

 SR, 0009-0009-1177-2026

### ABSTRACT

The sustainable wastewater treatment method known as phytoremediation is reviewed in this paper, with particular attention paid to important technologies including phytoextraction, rhizofiltration, phytostabilization, phytodegradation, and phytovolatilization. The study emphasizes the effectiveness of phytoextraction for heavy metal contamination using hyperaccumulator plants. It also highlights the versatility of phytoremediation by presenting compelling case examples in various situations. This environmentally friendly strategy offers affordable answers to the worldwide water pollution challenge and is in accordance with the growing demand for environmentally aware techniques. Phytoremediation – which emphasizes methods like phytoextraction – becomes a more viable path forward for wastewater pollution mitigation as environmental stewardship advances. By fusing theoretical understanding with real-world implementations, the article advances the conversation on sustainable wastewater treatment while reinforcing phytoremediation’s promise for a more environmentally friendly future.

**Key words:** phytodegradation, phytoextraction, phytoremediation, phytostabilization, phytovolatilization, rhizofiltration

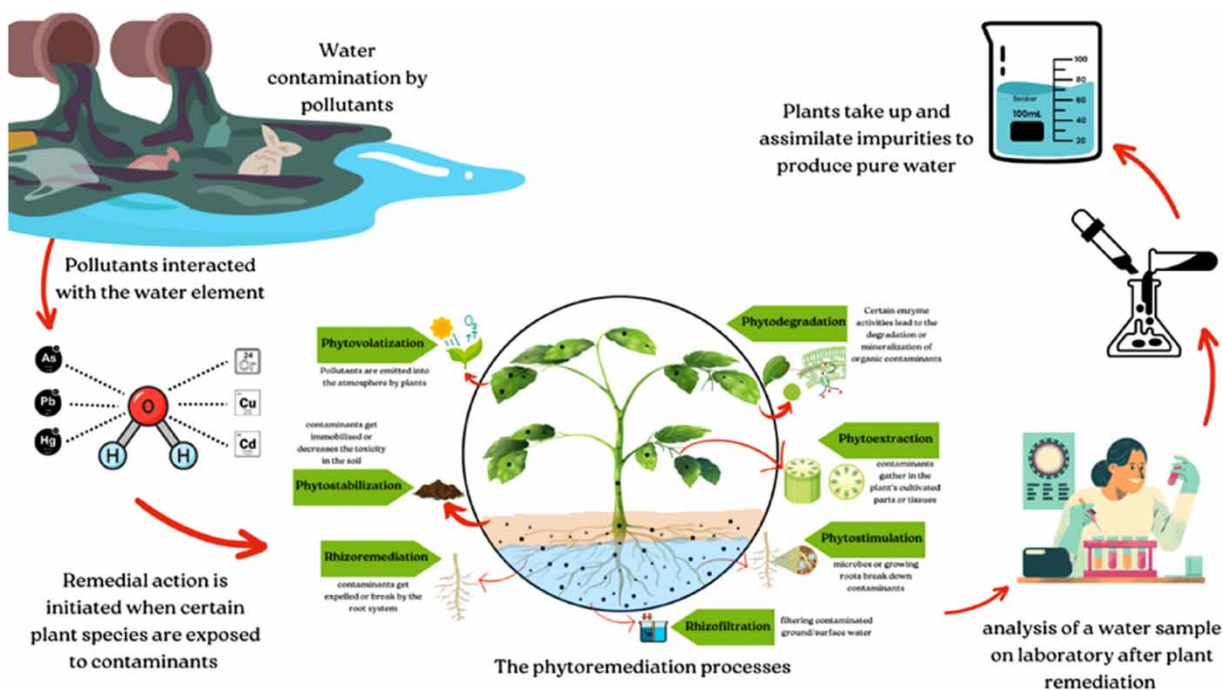
### HIGHLIGHTS

- Phytoremediation, an eco-friendly method utilizing plants for pollutant removal.
- Cost-effective, reduces the need for extensive infrastructure.
- Challenges include time-consuming processes, site-specific efficacy, and plant species selection.
- Both advantages and challenges are crucial for optimal use in diverse remediation scenarios.

---

This is an Open Access article distributed under the terms of the Creative Commons Attribution Licence (CC BY-NC-ND 4.0), which permits copying and redistribution for non-commercial purposes with no derivatives, provided the original work is properly cited (<http://creativecommons.org/licenses/by-nc-nd/4.0/>).

## GRAPHICAL ABSTRACT



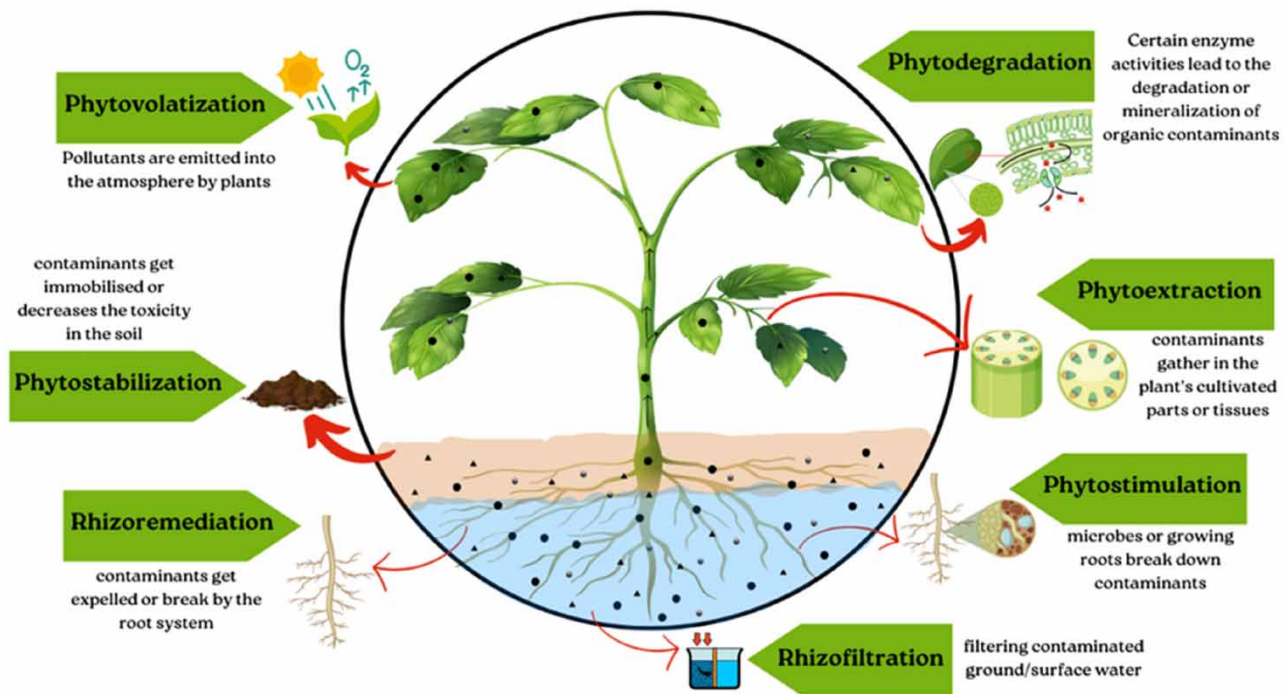
## 1. INTRODUCTION

Water, a crucial natural resource, sustains life and environments. The two primary categories of natural water resources, surface water and groundwater, play indispensable roles in meeting various human needs. However, the escalating demands resulting from climate change, rapid population growth, overexploitation of natural resources, and accelerated industrialization have imposed immense pressure on freshwater reserves (Calzadilla *et al.* 2011; Connell 2018). The exacerbation of this situation is compounded by industrial activities near water bodies, agricultural runoff, and the release of untreated sewage, collectively contributing to the deterioration of water quality (Azizullah *et al.* 2011; Meghla *et al.* 2013; Weldemariam 2013). Globally, nearly 2 million metric tons of wastewater are dumped into water bodies, particularly affecting poorer nations where surface water bodies receive a significant proportion of untreated industrial effluents and raw sewage (Azizullah *et al.* 2011).

The repercussions of this pollution are severe, with the enrichment of wastewater by heavy metals (HMs) posing threats to human health, plants, and animals (Jeevanantham *et al.* 2019). It is clear from these challenges that wastewater must be treated before being released into an aquatic environment. Wastewater treatment is an essential concern in order to provide clean drinking water and preserve biodiversity. Wastewater treatment aligns with the essential components of the 2030 Sustainable Development Goals (SDGs), contributing to sustainable development by addressing poverty and illness. Traditional wastewater treatment methods, such as distillation systems or using physicochemical techniques like ion exchange, adsorption, reverse osmosis, and UV treatment, have been utilized. However, these techniques often generate sludge and are time-consuming, expensive, and inefficient (Ahila *et al.* 2020; Ali *et al.* 2020).

In recent years, an environmentally friendly technology, phytoremediation, has gained prominence as an alternative for wastewater treatment. Initially explored by Boyd in 1970, phytoremediation employs selected vascular plants to destroy, extract, or isolate pollutants from polluted environments. Subsequent research by Cowgill and others focused on eliminating HMs from wastewater (Outridge & Noller 1991; Ali *et al.* 2013; Rezanian *et al.* 2015; Sricoth *et al.* 2018; Ting *et al.* 2018). Some of these techniques are discussed in Figure 1.

Certain plants, termed hyperaccumulators, exhibit the remarkable ability to accumulate substantial quantities of HMs (Andrianisa *et al.* 2008). These plants are suitable for remediation because they can retain HMs in their tissues without experiencing significant damage. Phytoremediation emerges as a viable, economical, and efficient cleanup technique for treating



**Figure 1** | Different phytoremediation approaches used for wastewater treatment.

groundwater, wastewater, and contaminated soil. Plant species, namely *Eichhornia* sp., *Salvinia* sp., duckweed, *Azollasp.*, *Typha* sp., *Scirpus* sp., *Limnocharisflava*, *Potamogeton* sp., *Myriophyllum* sp., *Spartina* sp., *Cyperus* sp., and *Phragmites* sp., have demonstrated significant potential in eliminating HMs from wastewater (Soda *et al.* 2012; Rodríguez & Brisson 2015).

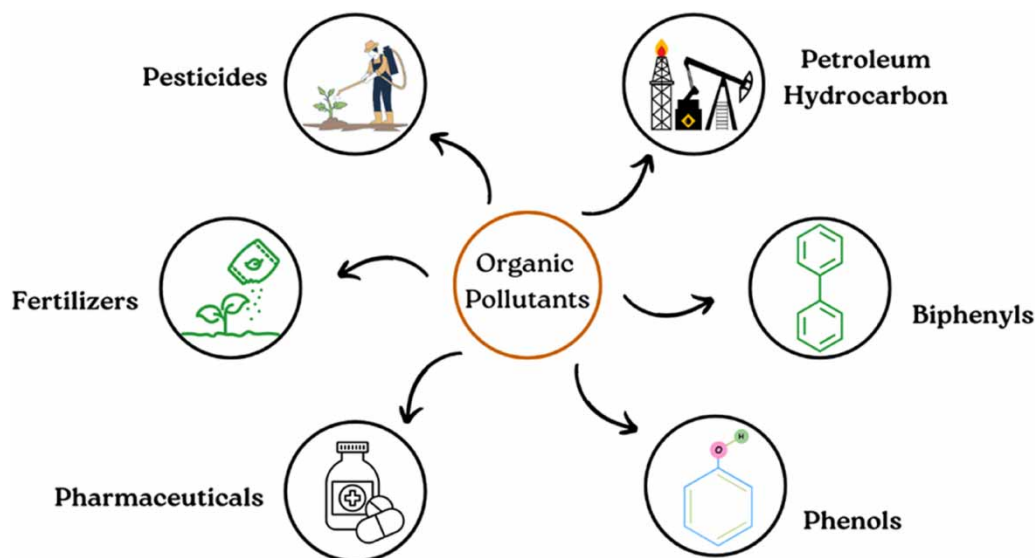
This study provides a comprehensive analysis of phytoremediation as a sustainable wastewater treatment technique. It delves into the fundamental mechanisms, efficiency, and applications of phytoremediation in various environments. The article proceeds to illustrate the adaptability of phytoremediation through various case studies in diverse environmental contexts, highlighting its potential in addressing the contemporary challenges of water pollution.

## 2. TYPES OF WASTEWATER CONTAMINANTS

Water bodies face contamination from numerous sources, introducing varied contaminants that impair both environmental and human well-being. The two primary types of pollutants are inorganic pollutants and organic pollutants.

### 2.1. Organic pollutants

Industries heavily depend on various dyes and chemicals for the synthesis of diverse products, notably cosmetics, medicines, and clothing. Despite their industrial benefits, concerns are mounting over their environmental repercussions, specifically focusing on waterborne organic pollutants characterized by extended half-lives (Baqar *et al.* 2017). Waterborne organic pollutants pose substantial threats to human health, animal populations, and marine life. The spectrum of adverse effects includes severe diseases like learning disabilities, cancer, and birth defects, as well as reproductive, behavioral, and immunological discrepancies in both animals and humans. Organisms along the waterborne food chain, encompassing humans, eagles, polar bears, and killer whales, accumulate these pollutants, resulting in harmful effects and, in some instances, fatalities. Researchers have established connections between waterborne organic pollutants and conditions such as breast cancer, tumor initiation, and elevation in humans. The impact of these pollutants is notably perilous for children, with persistent organic pollutants hindering cell development in this demographic (Tahir *et al.* 2022). Waterborne organic pollutants encompass a range of substances with carbon-based molecular structures. Some of the examples of organic pollutants are represented in Figure 2. Out of these, pesticides and petroleum hydrocarbons will be discussed in subsequent sections.



**Figure 2** | Various natural and anthropogenic sources of organic pollutants.

Recent reports underscore the global contamination of water sources by a diverse array of organic pollutants, including pharmaceutical waste, dyes, and pesticides, precipitating severe environmental challenges. The unregulated discharge of untreated waterborne organic pollutants into water systems poses harmful effects on living organisms and ecosystems (Madima *et al.* 2020). Carrying carcinogenic potential, toxicity, and mutagenic properties, many waterborne organic pollutants, particularly dyes, exhibit high toxicity even at low concentrations (Yang 2011; Shanker *et al.* 2017). Moreover, the intricate structures of these waterborne contaminants render them extremely impervious to biodegradation and impervious to conservative physical and biological oxidation treatments.

### 2.1.1. Pesticides

The destiny of pesticides in the environment is intricately linked to their physicochemical properties, particularly their water solubility determined by the octanol–water partition coefficient and their mobility and persistence in the soil. Beyond inherent properties, water pollution from pesticides is influenced by numerous factors, including climatic conditions (precipitation, temperature, wind, and humidity), cultivation practices, hydrogeological characteristics, application speed, soil type (organic matter content and texture), frequency, product amounts, seasonality, and trophic status (Worrall & Kolpin 2004; Carles *et al.* 2019).

Pesticides, classified by target species such as fungicides, insecticides, and herbicides, are extensively used in both urban settings and agricultural farmland (De *et al.* 2014). Fungicides, utilized to prevent fungus infection in seeds or plants, are applied either before the presence of fungus or after infection. Insecticides, employed to control insects, and herbicides, designed to eliminate weeds, are prevalent in farmlands and other areas (Syafurudin *et al.* 2021). Pesticides can also be categorized on the basis of their mode of action, like agents that repel, destroy, or mitigate (Mahmood *et al.* 2016), and through a more scientific approach considering their chemical composition.

These chemicals, partly soluble in water, elicit more concern for their residues in foods than in drinking water. Pesticides that are synthetic and organic, such as DDT, endrin, aldrin, and chlorinated hydrocarbons like chlordane, have a tendency to build up in food chains. Even though they are extremely hazardous, organophosphorus chemicals like malathion and diazinon, which were created as alternatives to chlorinated hydrocarbon pesticides, break down quickly in the environment and lose their presence in groundwater. Since carbamate insecticides have a limited ability to bind to soil particles, they may find their way into surface waters as a substitute for chlorinated hydrocarbons (Riyaz *et al.* 2022).

### 2.1.2. Petroleum hydrocarbons

Marine petroleum hydrocarbons have two primary sources: natural (diagenetic or biogenic) and anthropogenic (pyrogenic or petrogenic) (Adeniji *et al.* 2017). Diagenetic sources result from transformations in sediment, while biogenic hydrocarbons



originate from living organisms. Natural seepage serves as a prevalent route for these hydrocarbons to infiltrate marine water (Kvenvolden & Cooper 2003). Anthropogenic hydrocarbons, more prevalent in the environment, result from several human activities such as urbanization, transportation, industrialization, oil operations, shipping, fishing, and storage (Sakari *et al.* 2008; Strother *et al.* 2013).

Oil industries, particularly during production, refining, transportation, and storage processes, play a substantial role in water pollution through the discharge of oily wastewater (Al-Futaisi *et al.* 2007). Accidental spills, frequently occurring on ships, oil platforms, and during oil transportation, result in hydrocarbon pollution in water. This leads to petroleum products forming a water-resistant film on seawater, hindering oxygen exchange, and causing harm to marine life (Obida *et al.* 2018). The increased use of vehicle oil, a major contributor to petroleum hydrocarbon contamination in water, results in runoff from oil drops onto the ground, eventually washing into water streams (Mfarrej *et al.* 2023).

## 2.2. Inorganic pollutants

The formidable presence of inorganic pollutants, specifically HM ions, constitutes a severe threat to organisms, influenced by both anthropogenic and geological factors (Tarannum & Khan 2020). The escalation of harmful pollutants in water results directly from the increasing social, agricultural, industrial, and domestic activities. There are several ways that inorganic contaminants enter natural ecosystems. Non-point contributors, including agriculture plant wastewater, and point sources like treatment centers located across the city, pharmaceutical, cosmetics, and sanitary industries contribute to contamination. Groundwater pollution is influenced by interactions involving leaching from agricultural fields, rivers, and sewage networks (Ebele *et al.* 2017).

Inorganic pollutants encompass industrial waste, nutrients, HM, and sediments (Zhang *et al.* 2020), out of which HM and nutrients are discussed in a subsequent section. Although many of these pollutants exist naturally, human activities like agriculture, mining, and industrial processes have escalated their amounts in the environment (Madima *et al.* 2020). Most inorganic pollutants are not biodegradable, and when they build up in the body, they can cause serious health problems (Lu & Astruc 2018). The global prevalence of inorganic pollutants, especially HM such as zinc (Zn), lead (Pb), iron (Fe), cadmium (Cd), chromium (Cr), arsenic (As), cobalt (Co), and nickel (Ni), represents an urgent environmental concern affecting both developing and developed nations (Baruah *et al.* 2016; Bashir *et al.* 2019; Malik *et al.* 2019). These carcinogenic, non-biodegradable, and highly toxic metals necessitate prompt removal from water before release into the environment (Malik *et al.* 2017; Talaiekhosani & Rezaia 2017; Abdi *et al.* 2018).

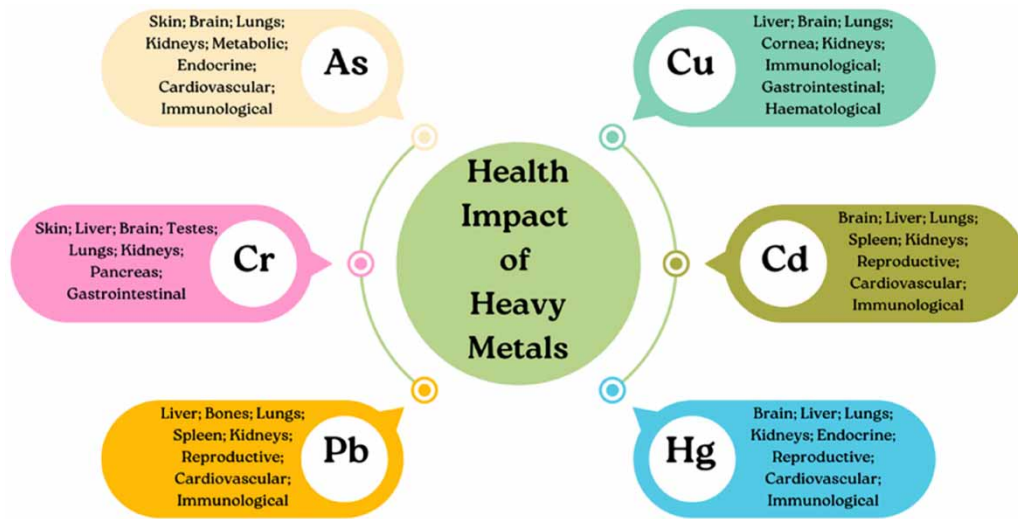
### 2.2.1. Heavy metals

The HM contamination is often linked to industrial wastewater; it is noteworthy that in developing regions, these contaminants extend to various water sources such as lakes (Archundia *et al.* 2017; Xu *et al.* 2017), domestic wastewater seepage (El Khatib *et al.* 2012), rivers (Mwanamoki *et al.* 2015), and groundwater (Kumarasinghe *et al.* 2017; Sridhar *et al.* 2017). The introduction of these metals into the environment results from improper waste discarding, diverse agricultural practices, and industrial activities (Chowdhury *et al.* 2016). Essential for the growth of living organisms, HM like copper (Cu), Zn, Cr, and Fe become challenging due to their tenacious nature, leading to bioaccumulation in humans and animals through contaminated water consumption (Joseph *et al.* 2019). Figure 3 illustrates the harmful effects of various HMs on diverse parts of the human body.

Categorized among the most perilous substances due to their deadly nature (Järup 2003), HM infiltrates water from several industrial sources, including mining, metal plating, painting, tanneries, fertilizers, and batteries (Javadian 2014; Mahmud *et al.* 2016). Whether directly or indirectly, metals like Co, As, mercury (Hg), Pb, Cu, Cd, Zn, Ni, and Cr enter water bodies and persist in various oxidation states for extended periods (Yadav *et al.* 2019). Urban pollution contributes HM through polluted air, dust, and sediment, with these contaminants traveling over long distances in both non-biological and biological forms. The biological form is particularly significant, posing heightened risks to humans and ecosystems. Therefore, the imperative remains for the elimination of HM ions from contaminated wastewater before discharge into water bodies (Yadav *et al.* 2019).

### 2.2.2. Nutrients (phosphorus and nitrogen)

The excessive loading of nutrients, particularly nitrogen (N) and phosphorus (P), stands as a critical ecological concern and a prominent water quality issue in contemporary surface water bodies (Badruzzaman *et al.* 2012). While these nutrients are vital for the persistence of aquatic organisms, their excessive loading can have adverse effects on the designated usage of



**Figure 3** | Impact of HMs on human body.

water (Freeman *et al.* 2009). Nutrient enrichment in water bodies results from a combination of natural and anthropogenic sources, with several factors influencing the loading process, including bioavailability, source output, loading mode, location, seasonal variation, specification, and concentration (Withers & Jarvie 2008).

The primary catalyst for the increased loading of nutrients into water resources is linked to the production of agricultural food (Han & Allan 2012). Multiple sources contribute to the excess nutrient loading in water bodies, including potential influence from climate change, inappropriate land usage and management, and intensive and poor farming practices (Wang *et al.* 2010; Castillo *et al.* 2014; Giri *et al.* 2014). Significantly, the primary sources of N and P pollution in water bodies are the result of sewage effluents originating from detergents and human waste and excess agricultural nutrients (Bayram *et al.* 2013).

By understanding and harnessing the capabilities of plants, phytoremediation emerges as a promising approach to mitigate the diverse range of contaminants threatening water ecosystems. A profound understanding of the intricate interactions between these contaminants and water ecosystems is essential for formulating effective remediation strategies. Phytoremediation, grounded in plant-mediated processes, emerges as a promising and sustainable approach to water purification. The upcoming section delves into how plants actively engage in improving water pollution, emphasizing a nature-centric strategy that holds considerable promise for transforming environmental remediation methodologies.

### 3. PHYTOREMEDIATION MECHANISMS

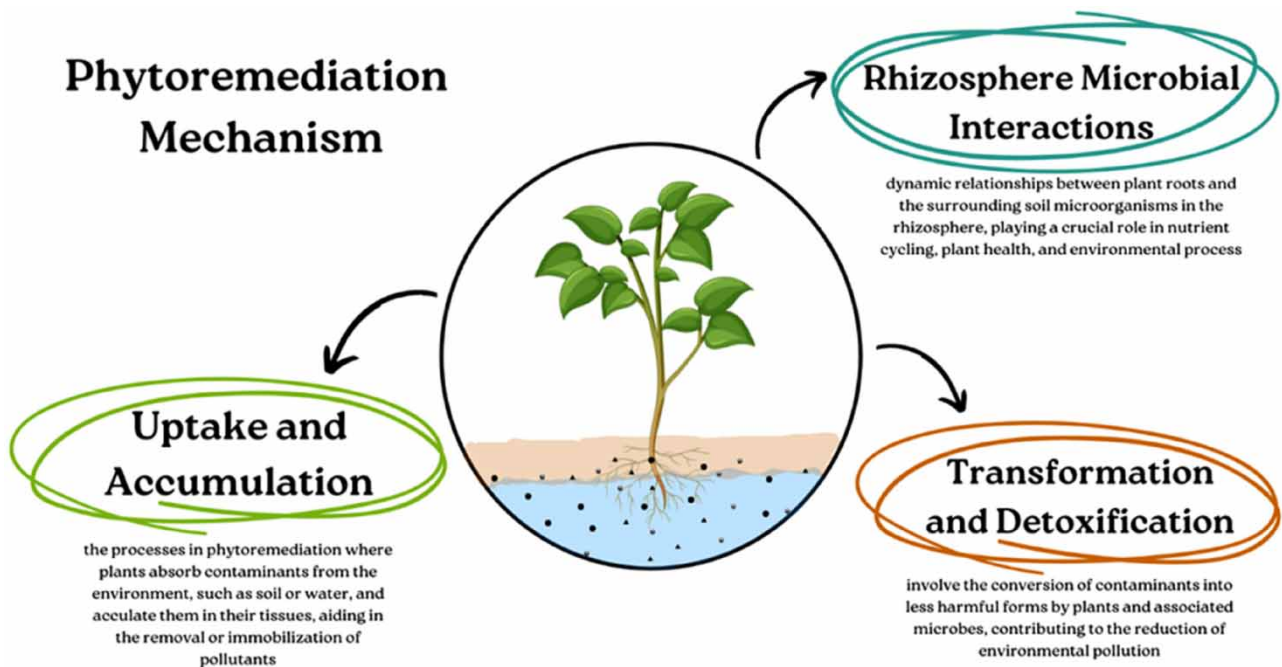
Phytoremediation, an eco-friendly remediation approach, depends on diverse mechanisms utilized by plants to alleviate the impact of contaminants in wastewater. A profound comprehension of these mechanisms is essential for enhancing the efficiency of phytoremediation strategies. Figure 4 intricately displays the fundamental mechanisms involved in the process.

#### 3.1. Uptake and accumulation

The initiation of phytoremediation involves the absorption of pollutants by plant roots, functioning as natural filters that selectively draw pollutants from the surrounding water (Abdel-Shafy & Mansour 2018). This process engages physiological mechanisms facilitating the transport of contaminants from water into plant tissues. A thorough examination of factors influencing uptake efficiency becomes crucial for judiciously selecting plant species across phytoremediation applications (Kvesitadze *et al.* 2015).

#### 3.2. Transformation and detoxification

Subsequent to the absorption of contaminants, plants undergo biochemical processes for the transformation and detoxification of pollutants (Singh & Jain 2003). This involves metabolic activities within plant cells, leading to the conversion of toxic substances into less harmful forms. A thorough investigation into the enzymatic pathways governing this transformation provides insights into the potential of different plant species to detoxify specific contaminants (Jabeen *et al.* 2009).



**Figure 4** | A flowchart of the mechanisms involved in phytoremediation.

### 3.3. Rhizosphere microbial interactions

The rhizosphere, influenced by root secretions, plays a pivotal role in the phytoremediation process. Microorganisms within this zone actively contribute to contaminant degradation and nutrient cycling. A detailed exploration of interactions between plant roots and rhizospheric microbes offers valuable insights into microbial-assisted mechanisms that enhance the overall efficiency of phytoremediation (Agarwal *et al.* 2020).

Understanding these fundamental phytoremediation mechanisms is vital for the development of sustainable and effective wastewater treatment strategies. Subsequent sections will explore specific phytoremediation types and explore case studies demonstrating the application of these mechanisms in diverse environmental contexts.

## 4. TYPES OF PHYTOREMEDIATION

Phytoremediation, an innovative plant-based method for *in-situ* elimination of HMs from contaminated environments, has gained global attention (Liu *et al.* 2020; Yang *et al.* 2020). As an application of plant sciences, phytoremediation seeks to harness the natural capabilities of plants to improve living conditions for humans. This approach utilizes the symbiotic relationship between rhizosphere organisms and plant physiology to eliminate persistent or hazardous contaminants from soils and waterways, particularly in regions with limited waterway pollution treatment (Schwitzguébel *et al.* 2011).

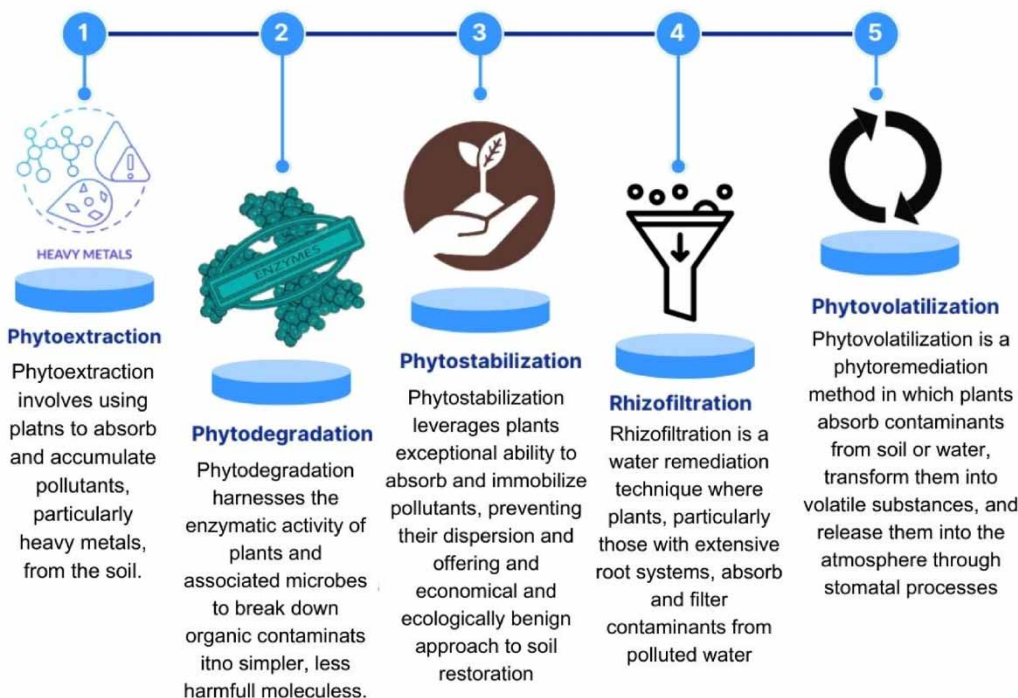
The versatility of phytoremediation extends its applicability to various purposes, including wastewater treatment, purification of surface and groundwater, recovery of soil affected by natural disasters, and the elimination of excessive nutrients from water basins (Dordio & Carvalho 2013). Notably, this technique comprises five approaches – phytoextraction, phytodegradation, phytostabilization, rhizofiltration, and phytovolatilization (Figure 5) – which will be discussed in subsequent sections. The use of plant-based remediation techniques not only addresses environmental pollution but also contributes to sustainable and eco-friendly solutions for managing diverse forms of contaminants in different environments.

### 4.1. Phytoextraction

Phytoextraction, a technique involving the cultivation of plants in polluted areas with the ability to accumulate HMs, facilitates the harvesting of metal-enriched biomass upon maturity (Pajević *et al.* 2016). This method aids in removing contaminants from the soil. The efficacy of phytoextraction as an environmentally friendly approach depends on the ability of plants to absorb and store metals in their aerial parts, considering metal availability for absorption. Typically, the collected

## Phytoremediation Techniques

Phytoremediation techniques harness the natural capabilities of plants to remediate environmental contaminants.



**Figure 5** | Illustration of several phytoremediation approaches used to harness the natural abilities of plants for environmental remediation.

biomass is either composted or incinerated, with limited recycling for further use (Prasad & De Oliveira Freitas 2003; Bhargava *et al.* 2012). Several essential plant characteristics contribute to successful phytoextraction, including the ability to cover a broad area, rapid growth, substantial biomass production, flexibility in harvesting, and the capacity to accumulate various HMs in their harvestable sections (Jabeen *et al.* 2009; Seth 2012).

Phytoextraction processes are generally categorized as induced or continuous. Continuous phytoextraction involves using plants that accumulate toxins throughout their entire life cycle, while induced phytoextraction employs chelators to increase toxin growth at specific stages of plant development (Starck 2005; Mukhopadhyay & Maiti 2010; Materac *et al.* 2015). Table 1 provides insights into various researchers utilizing phytoextraction technology for toxin removal, employing diverse plant species and methodologies.

The effectiveness of phytoextraction is determined by the plant's growth rate, biomass production, and root depth. *Alyssum* species, for example, have been demonstrated to efficiently reduce the amounts of soil metals (Dehghani *et al.* 2021). It is efficient; up to a 60–70% reduction in soil metal concentrations which can be achieved by hyperaccumulator plants such as *Alyssum*. A high output of biomass is essential; certain species, such as Indian mustard (*Brassica juncea*), may generate 20–30 tons of biomass yearly per hectare (Farooq & Khanday 2020). Depending on pollution levels, the process can take multiple growing seasons to accomplish considerable metal reduction; this can take up to five years. Phytoextraction can be used on a wide scale, particularly in agricultural and industrial areas where there is lot of soil pollution (DalCorso *et al.* 2019; Bhat *et al.* 2022).

Phytoextraction is a widely recommended green remediation approach, however it still has a lot of practical limits and needs further study. It takes a lot of time and administrative work, which prevents it from being quickly installed in hotspots with high levels of contamination. The ability of HMs to accumulate is hampered by insect attacks and diseases they cause. The efficiency of phytoextraction is influenced by various environmental factors, including pollutant distribution



**Table 1** | Research studies on phytoextraction and phytodegradation techniques

Type of Wastewater	Plant species used	Pollutants	Outcomes	Reference
Phytoextraction Technique				
Artificial wastewater	Wetland plant species	Cu, Cr, and Ni	More than 97% of pollutants such as Cu (8.8%), Cr (20.5%), and Ni (14.4%) were removed from the wastewater.	Liu <i>et al.</i> (2010)
Synthetic wastewater	<i>Arundo donax</i>	As	<i>A. donax</i> plants can treat polluted waters containing As concentrations up to 600 µg L <sup>-1</sup> .	Mirza <i>et al.</i> (2010)
Aqueous solution	<i>Potamogeton pusillus</i>	Cu, Cr	<i>P. pusillus</i> is capable of accumulating a significant amount of Cu and Cr from individual solutions (either Cu <sup>2+</sup> or Cr <sup>+6</sup> ).	Monferrán <i>et al.</i> (2012)
Biosolids – end product of wastewater treatment process	Willows ( <i>Salix</i> × <i>reichardtii</i> A. Kerner)	Cd, Zn, Ni, Cu	Flood-irrigation with reclaimed water to grow willows in a dry climate. The reclaimed water can also change biosolids properties, which will influence the effectiveness of willows to extract different metals.	Laidlaw <i>et al.</i> (2015)
Simulated polluted river water	<i>Iris sibirica</i>	Cd	The average removal rate of Cd from the wastewater could reach 91.8%. Wastewater polluted by Cd could be treated effectively using microcosmic subsurface vertical flow-constructed wetlands with the <i>I. sibirica</i> plant.	Gao <i>et al.</i> (2015)
Wastewater	<i>Tradescantia pallida</i>	Cr (VI)	Maximum Cr(VI) removal efficiency was 97.2–98.3%, and maximum total Cr removal efficiency was 86–88.2%.	Sinha <i>et al.</i> (2017)
Municipal sewage sludge	Jatar ( <i>Rosa multiflora</i> Thunb. ex Murray) and Virginia fanpetals ( <i>Sida hermaphrodita</i> Rusby)	HMs (Cr, Ni, Cu, Zn, Cd, Pb)	Virginia fanpetals were more efficient in the phytoextraction of Cr, Ni, Cu, Zn, and Cd from the sewage sludge than the multiflora rose. Multiflora rose phytoextracted greater amounts of Pb from the sewage sludge.	Antonkiewicz <i>et al.</i> (2017)
Wastewater	<i>Limnobium laevigatum</i>	Cr, Zn, Pb, Ni	The accumulation of Pb, Cr, Ni, and Zn in roots was higher than in leaves of <i>L. laevigatum</i> . This species can be considered a hyperaccumulator of Ni and Zn.	Arán <i>et al.</i> (2017)
Sewage effluent irrigated sandy soil	Sorghum ( <i>Sorghum bicolor</i> )	Aluminium (Al), Zn, manganese (Mn), Cd, Ni, Cu, Fe, Cr	Soil amendments caused contradictory effects on the elements phytoavailability. All amendments increased phytoextraction of Cd, Cu, and Ni compared to control. Sulfur, triple superphosphate, and phosphoric acid immobilized Al, Cr, and Fe. Sugar beet factory lime decreased phytoextraction of Al, Fe, Mn, and Zn. Drinking water treatment residual increased phytoextraction of Al, Cr, and Fe.	Shaheen <i>et al.</i> (2017)
Wastewater	<i>P. trichocarpa</i> × <i>P. deltoides</i>	Boron (B)	High B aqueous concentrations lead to high B accumulation in plant tissue and negatively impact plant biomass. Clone 195–529 had the highest B accumulation and tolerance. Varying salinity levels range from beneficial	Chen <i>et al.</i> (2017a)

(Continued.)

Table 1 | Continued

Type of Wastewater	Plant species used	Pollutants	Outcomes	Reference
Wastewater	<i>Tradescantia pallida</i>	Cr (VI)	to harmful for poplar growth and B removal. Best results achieved for an influent pH of 7 with a maximum Cr(VI) removal efficiency of 97.2–98.3% and a maximum total Cr removal efficiency of 86–88.2%. Excellent Cr uptake potential of <i>T. pallida</i> .	Sinha <i>et al.</i> (2017)
Untreated industrial/municipal effluent	Swollen duckweed ( <i>Lemna gibba</i> Linn.) and lesser duckweed ( <i>Lemna aequinoctialis</i> Welw.)	Ni, Pb, and Cd	Final metal removal percentages: Ni (97%) > Pb (94%) > Cd (90%) when treated with <i>Lemna gibba</i> L. Lesser duckweed did not survive under experimental conditions. <i>Lemna gibba</i> L. is a good candidate for phytoremediation of wastewater.	Bokhari <i>et al.</i> (2019)
Mine wastewater	Klara ( <i>Salix viminalis</i> × <i>S. schwerinii</i> × <i>S. dasyclados</i> )	Cu, Ni, Zn	Lime and N100 stimulate plant growth and phytoextraction efficiency. Klara shows considerable potential to uptake Cu, Zn, and Ni.	Salam <i>et al.</i> (2019)
Industrial wastewater	Dhab ( <i>Desmostachya bipinnata</i> ), Sporobolus ( <i>Sporobolus arabicus</i> ), Kallar ( <i>Leptochloa fusca</i> ), and Para grass ( <i>Brachiaria mutica</i> )	Pb, Cd	Root Pb concentration was highest in <i>B. mutica</i> , followed by <i>D. bipinnata</i> and <i>L. fusca</i> , whereas <i>S. arabicus</i> showed depressed growth, minimum shoot metal accumulation, and uptake potential. <i>B. mutica</i> could be the suitable option to remediate industrial wastewater.	Ullah <i>et al.</i> (2020)
Distillery wastewater	<i>Ricinus communis</i> L.	Cr, Fe, Cu, Pb, Zn, Ni, Mn	<i>Ricinus communis</i> L. shows phytoremediation potential of metals. Reduction of BOD, COD, and metals is >70% using <i>Ricinus communis</i> L.	Tripathi <i>et al.</i> (2021)
Wastewater	Vetiver grass ( <i>Chrysopogon zizanioides</i> )	Cr (VI)	Reduction in Cr(VI) concentration : 5 ppm (87%), 10 ppm (51%), 30 ppm (28%), and 70 ppm (12%). Potential of vetiver grass in phytoextraction of Cr(VI) and its hyperaccumulator potential for other HMs.	Masinire <i>et al.</i> (2020)
Industrial wastewater	<i>Scirpus grossus</i> .	Pb	Pb removal in water: efficiency (99.9%), error (0.2%), absorption by plants (5,160.18 mg/kg with 10.6% error). HFSFCW under optimum conditions with no bioaugmentation might be a feasible choice for the treatment of Pb-contaminated water.	Tangahu <i>et al.</i> (2022)
Municipal and industrial wastewater	<i>Typha latifolia</i> L.	Cd, Cr, Cu, Pb, and Zn	<i>Typha latifolia</i> L. was shown to have acceptable performance.	Haghnazar <i>et al.</i> (2021)
Textile wastewater	<i>Lemna minor</i> L. and <i>Typha latifolia</i> L.	Pb, Cr, and Cu	<i>T. latifolia</i> and <i>L. minor</i> showed higher efficacy for textile effluent treatment under citric acid.	Ishaq <i>et al.</i> (2021)
Textile and tannery wastewater	Duckweed ( <i>Lemna minor</i> L.)	Cd, Cr, Pb, Cu, and Ni	HMs concentration increased under acetic acid up to: Cr (116 & 422%); Cd (106 & 416%); Pb (72 & 351%); Cu (76 & 346%); and Ni (41 & 328%).	Farid <i>et al.</i> (2022)

(Continued.)

Table 1 | Continued

Type of Wastewater	Plant species used	Pollutants	Outcomes	Reference
Phytodegradation Technique				
Agro-industrial wastewater	Water hyacinth ( <i>Eichhornia crassipes</i> )	P pesticide ethion	Accumulated ethion in water hyacinth plants decreased in: shoots (55–91%) and roots (74–81%).	Xia & Ma (2006)
Aqueous solution	<i>Azolla filiculoides</i>	Bisphenol A (BPA)	BPA removal: 60–90% Removal efficiency: more than 90% (BPA concentration = 5 ppm & amount of biomass = 0.9 gr).	Zazouli <i>et al.</i> (2014)
Municipal wastewater treatment plants	Wetland ( <i>Cyperus alternifolius</i> L.)	Oxybenzone (OBZ)	Higher accumulation of OBZ occurs in roots rather than in shoots.	Chen <i>et al.</i> (2017b)
Urban wastewater	<i>T. angustifolia</i> L.	1,2-Dichloroethane (1,2-DCA)	1,2-DCA removal: 100% (after 95 days) Removal efficiency: 18% (with addition of compost).	Al-Baldawi (2018)
Industrial wastewater	Duckweed ( <i>Spirodela polyrhiza</i> )	Amoxicillin	Amoxicillin reduction: 84.6–100%.	Singh <i>et al.</i> (2018)
Industrial wastewater	Duckweed ( <i>Spirodela polyrhiza</i> )	Ofloxacin (OFX)	OFX reduction: 93.73–98.36%.	Singh <i>et al.</i> (2019)
Industrial wastewater	<i>Canna indica</i>	Atenolol (ATL), diclofenac (DCF), carbamazepine (CBZ)	Microbial degradation: 80–93%.	Ravichandran & Philip (2022)

irregularities, soil pH, temperature variations, and moisture content (Prasad *et al.* 2022). Large-scale soil disposal raises environmental concerns even when the cleanup is completed quickly and all pollutants are eliminated (Robinson *et al.* 2015). Another significant challenge linked to the phytoextraction approach is the potential for food chain contamination due to the direct introduction of accumulated metals from plant biomass into the environment, if not managed appropriately (Mahar *et al.* 2016). Addressing these issues requires continued research and development to optimize phytoextraction methods and ensure safe and effective remediation.

Recent technological advancements in the last several years have brought new, creative, and effective ways to maximize the potential of phytoextraction. Genetic engineering and selective breeding can introduce or overexpress genes for metal tolerance, translocation, hyperaccumulation, and detoxification in plants with rapid growth and high biomass production (Prasad *et al.* 2022). As a result, phytoextraction's practical usefulness is much improved. There have been encouraging findings about HM accumulation in a number of genetically modified plants. For example, owing to the overexpression of the  $\gamma$ -glutamylcysteine synthetase enzyme, *Silene cucbalus*, *Populus angustifolia*, and *Nicotiana tabacum* have shown excessive accumulation of HMs (Fulekar *et al.* 2009). It has also been observed that overexpressing *Saccharomyces cerevisiae*'s YCF1 vacuolar transporter increases the absorption of complexes containing As, Cd, and Hg. According to Yadav *et al.* (2010), transgenically modified *Arabidopsis thaliana* exhibited a four-fold increase in Cd absorption when compared to wild-type plants. These advancements show how genetic alterations may greatly increase the efficacy and efficiency of phytoextraction, making it a more practical choice for extensive environmental rehabilitation.

#### 4.2. Phytodegradation

Phytodegradation involves harnessing the enzymatic activity of plants and their associated microbes to convert organic contaminants into simpler molecules (Lakshmi *et al.* 2017). This process relies on plants' capacity to produce necessary enzymes that initiate the breakdown of xenobiotics (Alkio *et al.* 2005). The accomplishment of phytodegradation hinges on collaborative interactions among soil, water, microbes, and plants, with the plant's role being pivotal in providing a surface area for

bacteria colonization around the shoot and root. This, in turn, enhances microbial activity, facilitating the breakdown of carbon substrates (Lakshmi *et al.* 2017).

Researchers suggest that phytodegradation is applicable in various habitats, encompassing surface and groundwater, soil, as well as river sediments and sludges (Edwards & Dixon 2004; Malecka & Tomaszewska 2005; Materac *et al.* 2015). Table 1 succinctly presents key findings from several studies, highlighting the adaptability and efficiency of phytodegradation in addressing challenges posed by organic pollution in diverse environmental contexts. The versatility of phytodegradation as a method for breaking down organic contaminants underscores its potential in addressing environmental pollution concerns across different scenarios.

Plants with broad root systems and quick growth, such as poplar (*Populus* spp.) and willow (*Salix* spp.), are frequently employed. For some organic pollutants, such as polycyclic aromatic hydrocarbons, phytodegradation can reach a degradation efficiency of up to 90% (Alagić *et al.* 2015). Large regions of soil and water polluted by organic pollutants, such as industrial waste sites and agricultural runoff areas, respond well to this treatment approach. Although phytodegradation is a promising method for treating wastewater, there are a number of limitations that prevent its widespread use. The heterogeneity in plant species' capacities to absorb and decompose certain pollutants is a significant problem that can lead to uneven treatment results. Climate variables like pH, temperature, and the availability of nutrients have a big influence on how well phytodegradation works (Qadir *et al.* 2020; Ullah *et al.* 2023). Depending on the pollution and the surrounding circumstances, the process might take months or years, and it is comparatively slow. When severe or mixed metal contamination occurs, its applicability is more constrained (He *et al.* 2022).

The efficacy and applicability of this green remediation strategy have been greatly increased by developments in phytodegradation methods. Among the most recent developments is the use of genetically engineered plants that express enzymes that more efficiently degrade a variety of organic contaminants (Rai *et al.* 2020). For example, plants are able to break down complex organic pollutants like pesticides, medicines, and industrial chemicals since genes encoding for enzymes like laccases, peroxidases, and cytochrome P450 monooxygenases have been inserted into the plants (Takkar *et al.* 2022). Further research has demonstrated that the creation of symbiotic plant–microbe systems in which some microorganisms aid in the process of degradation can accelerate the rate at which pollutants decompose (Padhan *et al.* 2021). These developments in biotechnology, along with the improvement of growing conditions and plant species selection, have strengthened and increased the viability of phytodegradation as a wastewater treatment and pollution mitigation technique.

### 4.3. Phytostabilization

Phytostabilization relies on plants' exceptional ability to absorb and store pollutants, leading to their immobilization or solidification (Chandekar & Godbole 2015). This approach effectively hinders the dispersion of pollutants through precipitation runoff, inhibiting their entry into groundwater and migration to surface soil. Plants selected for phytostabilization exhibit desirable characteristics, such as a robust root system that promotes the adsorption and accumulation of pollutants in tissues. The absorption of pollutants and their conversion into less soluble composites in the rhizosphere further enhances the efficacy of phytostabilization (Segura & Ramos 2013; Materac *et al.* 2015).

By employing plants to stabilize pollutants and impede their movement via wind or water, phytostabilization aims to reduce the bioavailability of toxins (Lakshmi *et al.* 2017). This method becomes particularly valuable when an extended phytoextraction process is impractical, making phytostabilization an economical and ecologically benign restoration technique. It proves especially suitable for soils with high metal content and widespread pollution (Wong 2003; Alkorta *et al.* 2010; Dary *et al.* 2010).

Researchers have implemented phytostabilization techniques to address various types of pollutants in wastewater. Table 2 offers an overview of some of these studies, emphasizing the adaptability and efficacy of phytostabilization in dealing with contamination issues. These methods stand out as a valuable tool in the arsenal of phytoremediation strategies, providing sustainable solutions for environmental restoration in the face of diverse pollution challenges.

Plants with extensive root systems, such as legumes and grasses, are frequently utilized because they aid in immobilizing contaminants. By using this technique, HM bioavailability can be decreased by up to 80% (Ogundola *et al.* 2022). Plants with large root biomass, like vetiver grass, are very productive and may produce ten to fifteen tons of root mass per hectare. Large-scale land reclamation operations are most suited for phytostabilization, particularly in mining and waste sites where controlling the spread of pollutants is essential (Gnansounou *et al.* 2017; Bakshe & Jugade 2023). Although a promising method for treating wastewater, phytostabilization has a number of important drawbacks. It works less well in places



**Table 2** | Research studies on phytostabilization and rhizofiltration techniques

Type of wastewater	Plant species used	Pollutant	Outcomes	References
<b>Phytostabilization Technique</b>				
Mining wastewater	Wetland plants ( <i>Phragmites mauritianus</i> and <i>Typha</i> spp.)	Co, Cu, Pb	<i>P. mauritianus</i> and <i>Typha</i> spp. provide the potential for phytostabilization.	Nabuyanda <i>et al.</i> (2022)
Land-derived wastewater	<i>Avicennia marina</i>	Pb, Cu, and Zn	<i>A. marina</i> has shown the ability compartmentalization of HMs.	Nath <i>et al.</i> (2014)
Canal wastewater	<i>Vossia cuspidate</i> (Roxb.) and <i>Griff.</i>	Cr, Pb, Cu, Al, Zn, and Cd,	Spring plants accumulated the highest concentrations in: root (Cr, Cu, Pb); and lowest in: shoot (Al, Cd, Cr, Zn).	Galal <i>et al.</i> (2017)
Lake water	<i>Ranunculus sceleratus</i>	Mn, Ni, Zn, Cd, Cu, Pb	Bioaccumulation factor (BF): 27.1 (Ni) > 20.0 (Zn) > 16.4 (Cd) > 7.7 (Cu) > 3.9 (Mn) > 3.6 (Pb).	Farahat & Galal (2018)
Industrial wastewater	<i>Petunia hybrida</i> L. and <i>Nicotiana glauca</i> L.	Ni, Cd, Pb, Cu, Cr, Mn, and Zn	Both are suitable for treatment of HMs in wastewater.	Khan <i>et al.</i> (2019)
Mining wastewater	<i>S. grossus</i>	Fe and Al	Boosts the phytostabilization of Al and Fe.	Ismail <i>et al.</i> (2020)
Wastewater	<i>Salix</i> species ( <i>Salix myrsinifolia</i> and <i>Salix schwerinii</i> )	Lanthanum (La)	<i>Salix</i> could be a suitable candidate to accumulate rare earth elements.	Mohsin <i>et al.</i> (2022)
Swine wastewater	<i>Eucalyptus grandis</i>	Cu	It can be used for phytostabilization.	Negrini <i>et al.</i> (2022)
Sewage wastewater	Wetland plants ( <i>Typha latifolia</i> and <i>Phragmites australis</i> )	Cu, Cd, Pb, Cr, Zn, and As	Both are suitable for phytostabilization.	Xiong <i>et al.</i> (2024)
Stormwater	<i>Phragmites australis</i> and <i>Iris pseudacorus</i>	Cd	Both have accumulated the highest Cd in roots than shoots. Appropriate for removing Cd polluted sites.	Mohsin <i>et al.</i> (2023)
<b>Rhizofiltration Technique</b>				
Industrial wastewater	Water hyacinth ( <i>Eichhornia crassipes</i> (Mart.) Solms)	Fe	Water hyacinth grown under poor-nutrient conditions is ideal to remove Fe.	Jayaweera <i>et al.</i> (2008)
Groundwater	Bean ( <i>Phaseolus vulgaris</i> L.) and Sunflower ( <i>Helianthus annuus</i> L.)	U	Removal efficiency for: sunflower (80%); bean (60–80%). U removal via rhizofiltration exceeded 90%.	Lee & Yang (2010)
Contaminated nutrient solution	Lettuce ( <i>Pistia stratiotes</i> L.)	Cd and Pb	Pb treatment: transpiration rate decreases. Cd treatment: transpiration rate increases.	Vesely <i>et al.</i> (2011)
Aqueous environment	<i>Azolla pinnata</i>	Pb (II)	Efficiency of Pb removal depends on exposure duration. Max. uptake of Pb : 1,383 mg Kg <sup>-1</sup> Reduction in Pb conc.: 83%.	Thayaparan & Iqbal (2013)
Eutrophic water	<i>Pistia stratiotes</i>	Pb, Cr, and Ni	Uptake of Ni is higher than others.	Abubakar <i>et al.</i> (2014)
Wastewater	<i>Phragmites australis</i>	As		

(Continued.)

Table 2 | Continued

Type of wastewater	Plant species used	Pollutant	Outcomes	References
Domestic wastewater	<i>Pistia stratiotes</i>	Chemical oxygen demand (COD)	Effective way to enhance rhizofiltration. Max. absolute growth rate: 13.51–16.54 g <sub>dw</sub> /day. Avg. biomass productivity: 5.808 g <sub>dw</sub> /m <sup>2</sup> days.	Pardo <i>et al.</i> (2016) (Olguín <i>et al.</i> (2017)
Industrial wastewater	Pea ( <i>Pisum Sativum</i> L.)	Tetracycline	Cost-effective strategy Wastewater can be reused for irrigation.	Yagoubi <i>et al.</i> (2023)
Dairy wastewater	<i>Coleus scutellarioides</i> and <i>Portulaca oleracea</i>	Total suspended solids (TSS), total dissolved solids (TDS), biochemical oxygen demand (BOD), COD, total phosphorus (TP), phosphate (PO <sub>4</sub> <sup>3-</sup> ), and total nitrogen (TN)	Reduction: 79.43% (TSS); 64.36% (TDS); 82.36% (BOD); 81.86% (COD); 75.55% (TP) (Das & Paul 2023) 74.67% (TN).	Das & Paul (2023)
Domestic wastewater	<i>Scirpus grossus</i>	Ibuprofen and paracetamol	Removal efficiency: 45% (Ibuprofen); 31% (Paracetamol).	Falahi <i>et al.</i> (2022)

where quick contamination removal is necessary. Choosing suitable plant species that can tolerate elevated pollution levels and diverse environmental circumstances is crucial to the effectiveness of this technique (Shen *et al.* 2022). The effectiveness of phytostabilization can be significantly impacted by soil parameters like pH, moisture content, and nutrient availability. There is also an environmental concern regarding the possibility of contaminant leakage or transport to non-target locations (Lacalle *et al.* 2023). The practical use of phytostabilization for wastewater treatment is made more difficult by the gradual stability of pollutants and the possibility of bioaccumulation in plant tissues.

In order to improve the immobilization of pollutants in soil and sediments, recent developments in phytostabilization approaches for wastewater treatment have concentrated on the employment of specific plants and biotechnological interventions. Scientists have discovered and employed hyperaccumulator plants, which are exceptionally effective in ensnaring HMs and other contaminants in their root zones. This prevents the pollutants from migrating into groundwater and lowers their bioavailability. It has also been demonstrated that the combination of rhizosphere engineering and mycorrhizal fungus enhances plant growth and pollutant stabilization capacities (Singh *et al.* 2022; Khan *et al.* 2023). Plants with improved resistance to hazardous conditions and higher phytostabilization effectiveness have also been developed via the use of genetic engineering techniques. These developments increase the efficiency of phytostabilization in the long term for treating polluted wastewater.

#### 4.4. Rhizofiltration

Rhizofiltration proves to be a valuable technique for tackling surface wastewater resulting from industrial and agricultural activities, with plants playing a critical role in the remediation process. In this method, plants are either exposed to wastewater soaked in their roots or submerged in purified water. The success of rhizofiltration hinges on selecting plants resistant to low oxygen concentrations, processing a large and rapidly developing root system, yielding substantial biomass, and demonstrating high tolerance to toxic compounds (Srivastava *et al.* 2014; Materac *et al.* 2015).

Supported by a study led by Raskin & Ensley (2000), the effectiveness of rhizofiltration is substantiated, demonstrating that plant roots actively absorb contaminants and HMs from their surroundings. Furthermore, this technique can reduce the ability of sediment to carry metals, particularly in cases of excessive metal deposition (Radziemska *et al.* 2017; DalCorso *et al.* 2019; Bakshe & Jugade 2023). Rhizofiltration has proven successful in handling HMs such as Pb, Cu, Co, Cd, uranium (U), and As, which are often challenging to remove using conventional techniques. This economically viable and ecologically benign approach deploys plant roots to collect and eliminate these HMs from polluted water streams (Srivastava *et al.* 2021; Elehinafe *et al.* 2022).

Over the past decade, researchers worldwide have delved into rhizofiltration using various plant species, establishing its efficiency in eliminating HMs from wastewater. Table 2 provides a summary of researchers contributing to rhizofiltration technology, showcasing the diverse plant species employed for contaminant removal. This method underscores the adaptability and utility of rhizofiltration in long-term water remediation projects, emphasizing its role as an effective and sustainable solution for addressing water pollution.

Aquatic plants, such as water hyacinth (*Eichhornia crassipes*) and duckweed (*Lemna minor*), are widely used because of their great resistance to water contaminants. These are useful for up to 95% reduct (Kristanti & Hadibarata 2023; Zhou *et al.* 2023). For every tonne of dry biomass, plants can acquire 1–2 kg of HMs. Ponds and other little bodies of water can be treated by rhizofiltration. Biomass management and disposal requirements prevent it from being scaled to bigger aquatic bodies (Newete & Byrne 2016). Rhizofiltration is an efficient method for treating wastewater, although it has several drawbacks. The effectiveness of the technique could be jeopardized due to varying pollutant concentrations, which can be higher than the tolerance limit of plants (Kafle *et al.* 2022). It is important yet difficult to maintain ideal conditions, especially for large-scale applications, such as pH, temperature, and nutrient availability. The possibility of pollutants being released again into the environment through the roots of plants calls for cautious management and control methods (Bakshe & Jugade 2023).

The effectiveness and scalability of rhizofiltration as wastewater treatment technology have been the focus of recent improvements. The creation of specific plant species and hybrid systems that enhance the absorption and removal of pollutants from wastewater are examples of innovations (DalCorso *et al.* 2019). Plants with improved metal accumulation and tolerance have been created through genetic engineering. The efficacy of rhizofiltration has been boosted by its combination with other treatment techniques, including built wetlands and bioreactors. The microbial communities connected to plant roots have been optimized by developments in our knowledge of plant–microbe interactions, which have further enhanced the removal of contaminants (Thijs *et al.* 2016; Agrahari & Kumar 2024).

#### 4.5. Phytovolatilization

Phytovolatilization represents a method in which pollutants are converted into hazardous compounds by green plants, utilizing the plant's stomata to release volatile substances into the surrounding environment (Pivetz 2001; Ghosh & Singh 2005; Leguizamo *et al.* 2017). Throughout this process, plants absorb pollutants from water or soil, converting them into less dangerous forms, and releasing them into the atmosphere. Plants naturally manage and transport numerous gases, including water vapor (H<sub>2</sub>O), carbon dioxide (CO<sub>2</sub>), oxygen (O<sub>2</sub>), ethylene (C<sub>2</sub>H<sub>4</sub>), and signaling chemicals (Materac *et al.* 2015). The activation of systems that carry volatile organic compounds (VOCs) throughout the plant occurs based on the physiology of both the plant and the properties of the contaminant (Collins *et al.* 2006; Dettenmaier *et al.* 2009; Limmer & Burken 2014, 2016). Phytovolatilization finds frequent application in removing organic contaminants such as trichloroethylene (C<sub>2</sub>HCl<sub>3</sub>), benzene (C<sub>6</sub>H<sub>6</sub>), nitrobenzene (C<sub>6</sub>H<sub>5</sub>NO<sub>2</sub>), phenol (C<sub>6</sub>H<sub>5</sub>OH), and atrazine (C<sub>8</sub>H<sub>14</sub>ClN<sub>5</sub>) from soil and water, as well as HMs like Hg, selenium (Se), or As (Komives & Gullner 2005; Gonçalves *et al.* 2007; Wang *et al.* 2009).

Pollutants like Se and Hg are volatilized by plants like mustard and poplar. Under ideal circumstances, this process can volatilize up to 70–80% of certain pollutants. Depending on the kind of plant and surrounding conditions, the rate varies greatly; certain plants can release up to 50 g of Hg per hectare per year (Awgchew & Nigussie 2022). Areas with particular pollutants that may be safely volatilized can benefit from phytovolatilization (Qadir *et al.* 2020). The widely utilized wastewater treatment method known as phytovolatilization is restricted in its applicability due to a number of limitations. Potential volatile chemical releases into the atmosphere, which can lead to air pollution and endanger the health of those around, are a significant problem. Sites with a combination of contaminants or areas subject to stringent air quality laws are less appropriate for it. A number of variable environmental factors, including soil type, temperature, and humidity, as well as plant species, have a substantial impact on the effectiveness of this method (Limmer & Burken 2016).

The efficiency and efficacy of phytovolatilization as a wastewater treatment method have been the subject of recent improvements. By adding or overexpressing genes linked to the detoxification and emission processes, genetic engineering has been used to improve plants' capacity to volatilize toxins, such as HMs and organic pollutants (Kafle *et al.* 2022; Mamun *et al.* 2024). Plant species with stronger volatilization capacity and quicker growth rates have emerged as a result of improvements in plant breeding and selection. The more accurate manipulation of plant physiology has been made possible by advances in our knowledge of the molecular processes behind contaminant absorption, transport, and volatilization (Anas *et al.* 2020; Mahboob *et al.* 2023). To improve overall treatment efficiency, novel ways to combine phytovolatilization

with other green technologies such as phytoremediation and artificial wetlands have also been investigated. As a result of all these developments, phytovolatilization is becoming a more viable and efficient wastewater treatment option.

As we navigate through the complexities of phytoremediation techniques, each method uncovers the unique role plants play in mitigating environmental contaminants. From phytoextraction's metal accumulation to phytodegradation's enzymatic breakdown of organics and the immobilization in phytostabilization, the upcoming section will delve into the critical aspect of selecting suitable plants for wastewater treatment. Understanding the diverse strategies employed by plants in phytoremediation mechanisms sets the stage for exploring how specific plant species, with their hyperaccumulation abilities, tolerance, and growth characteristics, become pivotal in constructing effective and sustainable solutions for wastewater treatment.

## 5. SELECTION OF SUITABLE PLANTS FOR WASTEWATER TREATMENTS

The remarkable capacity of plants to naturally accumulate HMs has gained increasing attention from the environmental science community and remediation approaches (Lajayer *et al.* 2019). This special ability arises from the intricate relationships between plants and the surrounding soil, where roots serve as the primary point of contact for metal absorption. HMs, including Zn, Pb, and Cd, are specifically absorbed by plants through a combination of metabolic and transport routes (Jabeen *et al.* 2009). These metals can be absorbed and stored in various plant parts, such as roots, leaves, and stems, creating a natural filtration system for pollutants in the soil. Effective wastewater treatment through phytoremediation hinges on the careful selection of plant species that exhibit specific traits conducive to the remediation process.

This section explores three pivotal aspects in the selection of suitable plants: hyperaccumulators, tolerance and adaption, and growth characteristics. Notably, certain plant species are termed hyperaccumulators, signifying their extraordinary ability to accumulate large quantities of HMs without experiencing harm (Muszyńska & Hanus-Fajerska 2015). The potential of leveraging this inherent ability to mitigate HM contamination in wastewater treatment through phytoremediation projects is considerable. Such projects offer a sustainable and environmentally friendly method for addressing the challenges associated with HM pollution.

By delving into the characteristics of hyperaccumulators and understanding their role in the phytoremediation process, researchers can strategically choose plant species that maximize metal accumulation in wastewater treatment scenarios. Table 3 presents the methods of phytoremediation, the mechanisms of pollutant removal, and the selection criteria for plant species. Additionally, considering the tolerance and adaptation mechanisms of plants in polluted environments, along with assessing growth characteristics, contributes to the development of robust and effective phytoremediation strategies. As we explore these critical aspects of plant selection, the subsequent sections will delve into the precise details of how these traits influence the success of wastewater treatment projects through phytoremediation.

### 5.1. Hyperaccumulators

Hyperaccumulators, a specific subclass of accumulator plants, are commonly found in naturally mineralized soils, showcasing a unique ability to collect elevated concentrations of metals in their leaves (Bhargava *et al.* 2012). Unlike other plants, hyperaccumulators can accumulate metals in their above-ground tissues without displaying any poisoning symptoms (Baker *et al.* 2020). These extraordinary plants are distributed across various regions, including Europe, North America, New Caledonia, and South Africa, thriving in soils abundant in metal content (Baker 1989).

The classification of a plant as a hyperaccumulator hinges on its capacity to accumulate metals beyond the Ni-toxicity threshold of 10–15  $\mu\text{g g}^{-1}$ , with concentrations exceeding 1  $\text{mg g}^{-1}$  Ni in the shoot. Threshold values have been established for each HM based on its unique phytotoxicity, providing a systematic approach to characterizing hyperaccumulation (Rascio & Navari-Izzo 2011). The efficiency of hyperaccumulators in eradicating HMs from polluted soils is influenced by the rate of biomass generation and the bioconcentration factor (BCF), representing the ratio of metal content in soil to shoot tissue. The roots play a vital role in absorbing and cleansing metals while sustaining growth, absorption, and biomass generation (Guerinot & Salt 2001; Clemens *et al.* 2002; McGrath & Zhao 2003). Hyperaccumulators typically exhibit BCF values higher than 1, occasionally surpassing 50–100, sparking ongoing discussions about the relationship between metal hyperaccumulation and tolerance (Bhargava *et al.* 2012).

More than 0.2% of angiosperms, representing a significant proportion, display the remarkable phenomenon of hyperaccumulation of HM ions (Rascio & Navari-Izzo 2011). This phenomenon extends across a diverse range of more than 450 vascular plant species representing 45 angiosperm groups, including those within the *Cyperaceae*, *Asteraceae*, *Brassicaceae*, *Caryophyllaceae*, *Fabaceae*, *Cunoniaceae*, *Lamiaceae*, *Flacourtiaceae*, *Poaceae*, *Euphorbiaceae*, and *Violetaceae* families



**Table 3** | Phytoremediation includes processes/mechanisms for contaminant removal and selection criteria of plant species (Yadav *et al.* 2018)

Approach	Pollutants	Mechanism	Selection criteria of plant species
Phytoextraction	Ni, Pb, Zn, Cd, Cu with EDTA addition for radionuclides, Pb, short chained aliphatic compounds, and pentachlorophenol	Hyperaccumulation	Tolerance to high metal-accumulation capability, high metal concentrations, accumulation of trace elements in above-ground parts, rapid growth rate, extended root system for exploring large soil volumes, easy to harvest, easy agricultural management, high translocation factor, resistance to pathogens and pests, good adaptation to prevailing environmental and climate conditions, repulse herbivores to avoid food chain contamination.
Phytodegradation	Herbicides – alachlor, atrazine, chlorinated aliphatic compounds – trichloroethylene (TCE), mixtures benzene toluene ethylbenzene and xylene (BTEX), nutrients – $\text{NH}_4^+$ , $\text{NO}_3^-$ , $\text{PO}_4^{3-}$ , 2,4,6-trinitrotoluene (TNT), ammunition wastes, rapid detonating explosive (RDX)	Plant degradation	Vegetation should be easy to maintain, hardy and easy growing, tolerance to water logging and drought conditions, deep rooting plants such as willow, poplar, aspen, cottonwood etc., transform the toxic substances into less toxic or non-toxic products, and high transpiration rate.
Phytostabilization	Cd, Pb, As, Zn, Cr, Cu, U, Se, hydrophobic organics – polychlorinated biphenyl (PCBs), polycyclic aromatic hydrocarbons (PAHs), furans, dioxins, DDT, pentachlorophenol, dieldrin	Complexation	Ability to keep translocation of metals from roots to shoots as flat as possible, ability to develop extended and abundant root systems, capacity to retain contaminants in roots or rhizosphere (excluder mechanism).
Rhizofiltration	Heavy metals such as Cd, Pb, Ni, Zn, Cu, Radionuclides – Sr, Cs, hydrophobic organics, U, and radionuclides	Rhizosphere accumulation	High adsorption surface, metal-resistant plants, terrestrial plants preferred because of fibrous and much longer root system, tolerance of hypoxia,
Phytovolatilization	Chlorinated solvents like trichloroethylene, carbon tetrachloride, tetrachloroethylene, methylene chloride, 1,1,1-trichloroethane, carbon tetrachloride, Se, Hg ion	Volatilization by leaves	Contaminants could be transformed to less-toxic substances, Hg ion may be transformed into less-toxic substance, ability to use terrestrial/aquatic plants for, <i>ex-situ</i> or <i>in-situ</i> application, species other than hyperaccumulators may be used, metabolites or contaminants released to atmosphere subject to more effective or rapid natural degradation processes (such as photodegradation).

(Padmavathiamma & Li 2007). Beyond their ecological and physiological significance, the interest in hyperaccumulator plants has surged due to the potential utility of their accumulation features. This interest opens avenues for practical applications, like the development of phytoremediation techniques for wastewater treatment or HM-contaminated soils (Rascio & Navari-Izzo 2011).

## 5.2. Tolerance and adaptation

Within the realm of phytoremediation, the success of plants in remediating formidable environmental conditions hinges on their resilience, illustrated by a delicate interplay of tolerance and adaptation. With an increase in contamination, plants demonstrate their capacity to withstand heightened pollutant levels and adjust to the distinctive conditions prevalent in wastewater environments (Mahar *et al.* 2016). As HM ions permeate the cellular domain, plants deploy sophisticated tolerance strategies to counteract the associated toxicity (Dalvi & Bhalerao 2013). Detoxification becomes crucial when surplus HM ions accumulate within the cytosol, compelling plants to mitigate their toxic effects. This intricate process involves chelation, where HM ions form complexes with ligands, diminishing the concentrations of free metal ions to benign levels (Manara 2012).

Various inorganic and organic ligands within the cytoplasm play pivotal roles in mediating HM chelation, encompassing metallothioneins, organic acids, phytochelatins, amino acids, and cell wall polyphenols/pectins/proteins (Gupta *et al.* 2013). For example, by complexing and decreasing the bioavailability of HM, organic acids stop them from remaining free ions in the cytoplasm. This intricate interplay of tolerance mechanisms and adaptive responses unveils plants' remarkable ability to navigate and mitigate the challenges posed by diverse contaminants, offering profound insights into the selection of robust species for effective phytoremediation (Yan *et al.* 2020).

### 5.3. Growth characteristics

In the realm of phytoremediation, the growth characteristics of chosen plants emerge as pivotal determinants of wastewater treatment efficacy. Factors like rapid growth (Abdelkrim *et al.* 2019), extensive root systems (Abdelhameed & Metwally 2019), and significant biomass yield are instrumental contributors to the efficient removal of pollutants (Aken 2008). These desirable growth attributes not only enhance the overall phytoremediation process but also facilitate cost-effective and sustainable approaches to wastewater treatment. A profound understanding and effective utilization of the growth characteristics specific to each plant species become imperative for optimizing their potential in environmental cleanup endeavors.

The ability of hyperaccumulator plants to flourish under elevated levels of HM can be attributed to multiple biochemical pathways that help maintain lower metal concentrations in the cytoplasm as compared to the soil, safeguarding cytoplasmic organelles from the toxic effects of HMs (Nedjimi 2009). Hyperaccumulator plants efficiently accumulate substantial quantities of HMs in their above-ground parts during normal growth and reproduction, with some exhibiting the capacity to accumulate non-essential HMs, such as Pb, Ag, Cd, and Hg, which lack functions (Nedjimi & Daoud 2009). The efficacy of phytoextraction is further heightened by plants with a high growth rate, resulting in a huge quantity of plant biomass coupled with a deeper root system (Nedjimi 2021).

## 6. CASE STUDIES ON PHYTOREMEDIATION

Phytoremediation is an environmentally friendly and sustainable method to clean up contaminated environments. It has been successfully used in various case studies. Remediating HM-contaminated soils with hyperaccumulator plants, such as *Alyssum* species, is one prominent example (Li *et al.* 2003). By accumulating and concentrating metals like Zn and Ni in their tissues, these plants have demonstrated the potential to lower soil metal concentrations. Wetland plants, for instance, *Phragmites australis*, have also been successfully used to cleanse water tainted with contaminants like petroleum hydrocarbons (Williams 2002). A thorough model for wastewater stabilization pond optimization is provided by Ali & Üçüncü (2023), which provides insightful information on enhancing the effectiveness of wastewater treatment methods, such as phytoremediation. Tahiri *et al.* (2023) assesses the presence of pharmaceutical compounds in wastewaters and aquatic environments, highlighting the need for effective treatment solutions such as phytoremediation to address emerging contaminants. In order to assess the efficacy of phytoremediation in enhancing groundwater safety and lowering health risks, Nguyen & Huynh (2023) provide a thorough description of groundwater quality and relate it to human health. These case studies demonstrate how phytoremediation may be used to remediate polluted land and water in a sustainable manner, highlighting its adaptability in tackling a variety of environmental issues. A comprehensive understanding of phytoremediation through a detailed bibliographical table featuring additional case studies is displayed in Table 4.

## 7. ADVANTAGES AND CHALLENGES OF PHYTOREMEDIATION

As a potential technique for cleaning up the environment, phytoremediation has a number of advantages and implementation-related challenges. One significant advantage is that it is environmentally friendly since plants use their own natural mechanisms to remove pollutants, which reduces the need for large-scale infrastructure (Futughe *et al.* 2020; Lata & Siddharth 2021). Furthermore, phytoremediation is economical, particularly in contrast to more conventional remediation techniques. The technique also improves esthetics, as well-chosen plants enhance the esthetic appeal of green places and aid in ecological restoration (Farraji *et al.* 2016).

There are obstacles in the way of widely using phytoremediation, though. In order to see significant effects, the approach might be lengthy and patient (Babu *et al.* 2021). Based on site-specific factors including soil composition and climate, phytoremediation's efficacy may differ (Jaskulak *et al.* 2020). It is important to select the right plant species for the area and toxins present, and the possibility of contaminants being released back into the ecosystem after plants are harvested is one of the

**Table 4** | Bibliographical table on various case studies

Type of water	Plant species used	Pollutants	Concluding remarks	References
Wastewater	<i>Lemna minor</i>	Dyes (Congo red and methylene blue)	After a 24-day period, it decreased Congo red by up to 25% and methylene blue by up to 99%.	Wibowo <i>et al.</i> (2023a, 2023b)
Household and Industrial wastewater	Water lettuce (WL), pennywort (PW), duckweed (DW), and alligator weed (AW)	Pb, Zn, ammonia (NH <sub>3</sub> ), PO <sub>4</sub> , sulfate (SO <sub>4</sub> ), potassium (K)	Compared to other treatments, AW was shown to have the greatest potential for phytoremediation.	Raza <i>et al.</i> (2023)
Swine wastewater	<i>Pistia stratiotes</i>	Cu	It was shown that NO controls the phytoremediation of wastewater for Cu.	Liu <i>et al.</i> (2023)
Textile wastewater	<i>Spirodela polyrhiza</i> (L.) Schleid.	COD, color, calcium (Ca), Fe, Ni, Cd, nitrate (NO <sub>3</sub> ), PO <sub>4</sub> , SO <sub>4</sub> ,	Final reduction up to 77.36, 91.70, 61.65, 69.41, 89.30, 88.37, 70.85, 73.11, and 75.49%, respectively.	Parihar & Malaviya (2023)
Wastewater	<i>Pistia stratiotes</i> and <i>Eichhornia crassipes</i>	BOD, Fe, COD, Mn, PO <sub>4</sub> , NH <sub>4</sub> , NO <sub>2</sub> , NO <sub>3</sub>	They are potential plants for phytoremediation.	Wibowo <i>et al.</i> (2023a)
HMs-contaminated wastewater	<i>Amaranthus hybridus</i> (Indian <i>chola</i> )	HMs (Ni, Fe, Sr)	<i>A. hybridus</i> has the possibility to be a Fe, Sr, and Ni hyperaccumulator.	Jha <i>et al.</i> (2023)
Antibiotics-contaminated wastewater	Coontail ( <i>Ceratophyllum demersum</i> )	Tetracycline	Coontail is suitable for managing antibiotic-contaminated waste water.	Ali <i>et al.</i> (2023)
Antibiotic-contaminated water	<i>Cyperus papyrus</i>	Fluoroquinolone	A progressive recognition of phytoremediation methods.	Chen <i>et al.</i> (2023)
Dairy wastewater	Water fern ( <i>Azolla pinnata</i> R. Br.)	pH, electrical conductivity (EC), TDS, TP, total Kjeldahl's and, N	Maximum significant reduction efficiency of pollutants ( $p < 0.05$ )	Goala <i>et al.</i> (2021)
Olive mill wastewater	<i>Myrtus communis</i> L. and <i>Punica granatum</i> L.	Organics, phenolics, TN, and TP	It was observed that elimination rates were around 10 times higher.	Petoussi & Kalogerakis (2022)
Pulp and paper industry wastewater	<i>Momordica doica</i> and <i>Cannabis sativa</i> ; <i>Tribulus terrestris</i> and <i>P. hysterophorus</i>	HMs (Fe, Cd, As, Cr)	Most of the indigenous plants had hyperaccumulating tendencies.	Sharma <i>et al.</i> (2021)
Well water and treated wastewater	Vetiver ( <i>Chrysopogon zizanioides</i> ), Pampas ( <i>Cortaderia selloana</i> )	Total hardness (TH), TDS	Compared to employing vetiver for phytoremediation, the use of Pampas grass for surface and subsurface drippers and for both kinds of water is much greater ( $P < 0.05$ ).	Mirzaee <i>et al.</i> (2021)
Sulfonamides polluted wastewater	<i>Cyperus papyrus</i>	Sulfonamides	The results confirm that sulfonamides can be bioremediated and offer fresh information on what happens to sulfonamides throughout the phytoremediation process.	Chen <i>et al.</i> (2021)
Paperboard mill wastewater	Vetiver grass ( <i>Chrysopogon zizanioides</i> )	EC, TDS, total soluble salts, COD, BOD, TN, P, K, Pb, Cd	It has a bright future for creating an economical, long-lasting process for detoxifying pollutants from wastewater produced in paperboard mills.	Davamani <i>et al.</i> (2021)

(Continued.)

Table 4 | Continued

Type of water	Plant species used	Pollutants	Concluding remarks	References
Olive mill wastewater	<i>Cyperus alternifolius</i> L. and <i>Vertiveria zizanioides</i> (L.) Nash	Total organic compounds (TOC), TN, phenolic compounds	These species may be employed as an environmentally friendly way to clean effluent from high-strength olive mills that has been diluted.	Goren <i>et al.</i> (2021)
Secondary treated domestic wastewater	<i>S. molesta</i>	N and P	The <i>S. molesta</i> plants weighing the most (280 g) were more effective in eliminating the extra nutrients found in the influent samples.	Mustafa & Hayder (2021)
Pulp and paper industry wastewater	<i>Bacillus</i> sp. PS-6	Fe, Pb, Ni, Mn, Zn, Cu, Cd, and As	The reduction of HM levels in wastewater following in-situ phytoremediation was demonstrated by the results.	Sharma <i>et al.</i> (2021)
Urban wastewater	Water hyacinths	Greenhouse gases	The findings imply that even in challenging circumstances, water hyacinths had strong capabilities for removing N and P.	Qin <i>et al.</i> (2020)
Dairy wastewater	Macrophytes ( <i>Cyperus articulatus</i> , <i>Eichhornia crassipes</i> , <i>Eleocharis interstincta</i> and <i>Typha domingensis</i> )	BOD, TP, TN	Dairy wastewater may be treated and its nutrients cycled using aquatic macrophytes.	Queiroz <i>et al.</i> (2020)

challenges. Despite these challenges, further study and technical developments hope to increase phytoremediation's effectiveness and adaptability, making it a practical and long-term solution for dealing with environmental pollution. To optimize phytoremediation's potential in various remediation circumstances, it is essential to comprehend both the potential advantages and challenges.

## 8. COMPARATIVE ANALYSIS OF PHYTOREMEDIATION TECHNIQUES IN WASTEWATER TREATMENT

There are several wastewater techniques available through phytoremediation, each having advantages and disadvantages of their own. The most important factor to compare when contrasting various strategies is their efficacy. Heavy metals like Ni and As are effectively removed from wastewater by hyperaccumulators such as *Alyssum* and *Pteris vittate* (Syta *et al.* 2020). Wetland plants that use phytoextraction and biosorption, such as *Juncus* (rush) and *Typha* (cattail), are also good at eliminating heavy metals (Ali *et al.* 2020). While certain species, like *Vetiveria zizanioides* (vetiver) and *Salix* (willow), can breakdown pesticides and solvents by phytodegradation (Khan *et al.* 2020; Kafle *et al.* 2022).

The growth conditions of various plants are important factors in determining their efficiencies. *Eichhornia crassipes* (water hyacinth) and *Lemna* (duckweed) are examples of hydrophytes that do well in wet environments and are excellent at removing nutrients (Lu *et al.* 2018). They do, however, need steady water levels and may grow invasive. Because they are suited to land-based systems, terrestrial plants like *Sorghum* and *Rudbeckia* are helpful in the treatment of industrial wastewater. For these plants to flourish, more watering and soil amendments might be needed (Gawronski *et al.* 2011).

The viability of phytoremediation is also affected by maintenance and management issues. Perennials need less frequent replanting but can be more difficult to manage than annuals due to their slower growth rates, which make them simpler to harvest yet necessitate replanting every season. Different plants have different nutritional requirements. Others require high nutrient levels for optimal development, which might be difficult to achieve in nutrient-poor wastewater. On the other hand, other plants can survive with low nutrient levels but may be less efficient in removing contaminants (Ajayi & Ogunbayo 2012; Slocombe *et al.* 2020).

A key consideration in the decision-making process is cost and economic viability. The selection of plants, preparation of the site, and installation might result in significant upfront expenses when putting up a phytoremediation system. This initial cost can be minimized, though, by selecting inexpensive or native plants (Fernandez 2014). Phytoremediation sometimes uses



less energy than certain mechanical or chemical treatment techniques, but operational expenses still include possible replanting, harvesting, and continuous upkeep.

## 9. FUTURE PROSPECTS

Sustainable wastewater management needs innovation and improvements in the field of phytoremediation. Plants that have undergone genetic modification may be better able to absorb and break down pollutants. Hybrid systems provide comprehensive purification solutions by integrating phytoremediation with other techniques. The global reach of phytoremediation is increased by robust plant species that flourish in a variety of temperatures. Economic analysis shed light on large-scale, cost-effective solutions. A climate that is ready for adoption is nurtured by regulatory frameworks. The modern monitoring systems guarantee real-time effectiveness evaluation. The initiatives for public education spread the seeds of knowledge about the ecological effects of phytoremediation. The green solutions are incorporated into urban areas for sustainable development through integration with urban planning. Phytoremediation helps in purifying water sources by addressing HMs and newly discovered pollutants. Phytoremediation is expected to be a key component of sustainable wastewater treatment in the future.

Phytoremediation is more practically feasible in locations with appropriate soil and climate since plants need certain conditions to grow and eliminate pollutants. Sites that face severe environmental conditions or high pollution levels may provide difficulties that reduce the viability of phytoremediation. A disadvantage for circumstances needing quick cleanup is that phytoremediation often works over a longer period of time than more instantaneous chemical or mechanical treatments. Therefore, even if the technique seems promising, its use will rely on technological considerations as well as a thorough site evaluation and timeline consideration.

Several policy recommendations might be taken into consideration to facilitate the application of phytoremediation techniques:

- (1) Governments ought to offer grants and financial incentives for the advancement of phytoremediation technology research and development. Through this investment, biotechnology, plant breeding, and hybrid treatment technologies may all be advanced and made more widely available and efficient.
- (2) Adoption of phytoremediation in the management of polluted sites might be aided by the establishment of precise rules and regulations. Policies should guarantee that pollutants are adequately handled and disposed of, as well as the safe management of plant biomass.
- (3) Encouraging cooperation between government, business, and academic institutions can result in the creation of creative ideas and the effective execution of phytoremediation initiatives. Collaborations can facilitate the exchange of best practices, resources, and information.
- (4) By raising understanding of the advantages and drawback of phytoremediation, public education campaigns can help these technologies gain traction and acceptability. Adoption can also be accelerated by educating industry executives and legislators about successful case studies.
- (5) Promoting pilot initiatives and testing grounds can yield important information on how well phytoremediation works under different circumstances. These initiatives can direct larger-scale deployments and contribute to the development of technological confidence.

Policymakers may handle environmental pollution more effectively and sustainably by addressing these factors and fostering an atmosphere that encourages the development and use of phytoremediation.

## 10. CONCLUSION

Phytoremediation, which includes important technologies including phytoextraction, rhizofiltration, phytostabilization, phytodegradation, and phytovolatilization, is a very flexible and sustainable wastewater treatment method. Phytoextraction is a promising approach that can successfully treat HM contamination through the use of hyperaccumulator plants. The case studies that are being presented highlight the practical success of phytoremediation in a variety of wastewater, demonstrating both its cost-effectiveness and environmental friendliness in addressing the problems associated with water pollution worldwide. The use of plants in remediation strategies – especially when it comes to techniques like phytoextraction – offers hope for a cleaner and greener future as we navigate the terrain of environmental stewardship and makes a significant contribution to the discussion about sustainable wastewater treatment methods.

## ACKNOWLEDGEMENT

The authors extend their appreciation to the Department of University of Petroleum & Energy Studies (UPES), Dehradun, and UPES for granting access to library facilities for conducting this research.

## DATA AVAILABILITY STATEMENT

All relevant data are included in the paper or its Supplementary Information.

## CONFLICT OF INTEREST

The authors declare there is no conflict.

## REFERENCES

- Abdelhameed, R. E. & Metwally, R. A. 2019 Alleviation of cadmium stress by arbuscular mycorrhizal symbiosis. *International Journal of Phytoremediation* **21** (7), 663–671.
- Abdelkrim, S., Jebara, S. H., Saadani, O., Chiboub, M., Abid, G., Mannai, K. & Jebara, M. 2019 Heavy metal accumulation in *Lathyrus sativus* growing in contaminated soils and identification of symbiotic resistant bacteria. *Archives of Microbiology* **201** (1), 107–121.
- Abdel-Shafy, H. I., Mansour, M. S. M., 2018 Phytoremediation for the Elimination of Metals, Pesticides, PAHs, and Other Pollutants from Wastewater and Soil. In: *Phytobiont and Ecosystem Restitution* (Kumar, V., Kumar, M. & Prasad, R., eds). Springer, Singapore, pp. 101–136.
- Abdi, G., Alizadeh, A., Zinadini, S. & Moradi, G. 2018 Removal of dye and heavy metal ion using a novel synthetic polyethersulfone nanofiltration membrane modified by magnetic graphene oxide/metformin hybrid. *Journal of Membrane Science* **552**, 326–335.
- Abubakar, M. M., Ahmad, M. M. & Getso, B. U. 2014 Rhizofiltration of heavy metals from eutrophic water using *pistia stratiotes* in a controlled environment. *IOSR Journal of Environmental Science, Toxicology and Food Technology* **8** (6), 01–03.
- Adeniji, A. O., Okoh, O. O. & Okoh, A. I. 2017 Analytical methods for the determination of the distribution of total petroleum hydrocarbons in the water and sediment of aquatic systems: A review. *Journal of Chemistry* **2017**, 1–13.
- Agarwal, P., Giri, B. S. & Rani, R. 2020 Unravelling the role of rhizospheric plant-Microbe synergy in phytoremediation: A genomic perspective. *Current Genomics* **21** (5), 334–342.
- Agrahari, S. & Kumar, S. 2024 Emerging and futuristic phyto-technologies for sustainable wastewater treatment with resource recovery and economical aspects. *Journal of Water Process Engineering* **65**, 105753.
- Ahila, K. G., Ravindran, B., Muthunarayanan, V., Nguyen, D. D., Nguyen, X. C., Chang, S. W., Nguyen, V. K. & Thamaraiselvi, C. 2020 Phytoremediation potential of freshwater macrophytes for treating Dye-Containing wastewater. *Sustainability* **13** (1), 329.
- Ajayi, T. O. & Ogunbayio, A. O. 2012 Achieving environmental sustainability in wastewater treatment by phytoremediation with water hyacinth (*Eichhornia crassipes*). *Journal of Sustainable Development* **5** (7), 80–90.
- Aken, B. V. 2008 Transgenic plants for phytoremediation: Helping nature to clean up environmental pollution. *Trends in Biotechnology* **26** (5), 225–227.
- Alagić, S. Ć., Maluckov, B. S. & Radojičić, V. B. 2015 How can plants manage polycyclic aromatic hydrocarbons? May these effects represent a useful tool for an effective soil remediation? A review. *Clean Technologies and Environmental Policy* **17** (3), 597–614.
- Al-Baldawi, I. A. 2018 Removal of 1,2-Dichloroethane from real industrial wastewater using a sub-surface batch system with *Typha angustifolia* L. *Ecotoxicology and Environmental Safety* **147**, 260–265.
- Al-Futaisi, A., Jamrah, A., Yaghi, B. & Taha, R. 2007 Assessment of alternative management techniques of tank bottom petroleum sludge in Oman. *Journal of Hazardous Materials* **141** (3), 557–564.
- Ali, H. Q. & Üçüncü, O. 2023 Modeling and optimizing wastewater stabilization ponds for domestic wastewater treatment. *Civil Engineering Journal* **9** (11), 2834–2846.
- Ali, H., Khan, E. & Sajad, M. A. 2013 Phytoremediation of heavy metals – concepts and applications. *Chemosphere* **91** (7), 869–881.
- Ali, S., Abbas, Z., Rizwan, M., Zaheer, I., Yavaş, İ., Ünay, A., Abdel-DAIM, M., Bin-Jumah, M., Hasanuzzaman, M. & Kalderis, D. 2020 Application of floating aquatic plants in phytoremediation of heavy metals polluted water: A review. *Sustainability* **12** (5), 1927.
- Ali, M. F., Ali, Q. A., Ridha, M. J. M., Mohammed, S. J. & Bohan, H. R. 2023 Phytoremediation of tetracycline via the coontail *ceratophyllum demersum* in antibiotics-contaminated water. *Biocatalysis and Agricultural Biotechnology* **53**, 102887.
- Alkio, M., Tabuchi, T. M., Wang, X. & Colón-Carmona, A. 2005 Stress responses to polycyclic aromatic hydrocarbons in *Arabidopsis* include growth inhibition and hypersensitive response-like symptoms. *Journal of Experimental Botany* **56** (421), 2983–2994.
- Alkorta, I., Becerril, J. M. & Garbisu, C. 2010 Phytostabilization of metal contaminated soils. *Reviews on Environmental Health* **25** (2), 135–146.
- Anand, V. S. S., Singh, P., Roy, A., Pallavi, S., Bist, V., Kaur, J., Srivastava, S., Katiyar, R. & Srivastava, S. 2021 Microbial systems as a source of novel genes for enhanced phytoremediation of contaminated soils. In: *Microbe Mediated Remediation of Environmental Contaminants* (Kumar, A., Singh, V. K., Singh, P. & Mishra, V. K., eds). Elsevier, Cambridge, pp. 177–198.

- Anas, M., Liao, F., Verma, K. K., Sarwar, M. A., Mahmood, A., Chen, Z. L., Li, Q., Zeng, X. P., Liu, Y. & Li, Y. R. 2020 Fate of nitrogen in agriculture and environment: Agronomic, eco-physiological and molecular approaches to improve nitrogen use efficiency. *Biological Research* **53** (1), 47.
- Andrianisa, H. A., Ito, A., Sasaki, A., Aizawa, J. & Umita, T. 2008 Biotransformation of arsenic species by activated sludge and removal of bio-oxidised arsenate from wastewater by coagulation with ferric chloride. *Water Research* **42** (19), 4809–4817.
- Antonkiewicz, J., Kolodziej, B. & Bielińska, E. J. 2017 Phytoextraction of heavy metals from municipal sewage sludge by *Rosa multiflora* and *Sida hermaphrodita*. *International Journal of Phytoremediation* **19** (4), 309–318.
- Arán, D. S., Harguinteguy, C. A., Fernandez-Cirelli, A. & Pignata, M. L. 2017 Phytoextraction of Pb, Cr, Ni, and Zn using the aquatic plant *Limnium laevigatum* and its potential use in the treatment of wastewater. *Environmental Science and Pollution Research* **24** (22), 18295–18308.
- Archundia, D., Duwig, C., Spadini, L., Uzu, G., Guédron, S., Morel, M. C., Cortez, R., Ramos, O. R., Chincheros, J. & Martins, J. M. F. 2017 How uncontrolled urban expansion increases the contamination of the Titicaca lake basin (El Alto, La Paz, Bolivia). *Water, Air, & Soil Pollution* **228** (1), 44.
- Awgchew, H. & Nigussie, A. 2022 To cite this article: Ashenafi nigussie, haymanot awgchew. phytoremediation of heavy metal-Contaminated soils: An overview of principles and expectations for fundamental techniques. *American Journal of Environmental Science and Engineering* **6** (2), 80–90.
- Azizullah, A., Khattak, M. N. K., Richter, P. & Häder, D. P. 2011 Water pollution in Pakistan and its impact on public health – A review. *Environment International* **37** (2), 479–497.
- Babu, S. M. O. F., Hossain, M. B., Rahman, M. S., Rahman, M., Ahmed, A. S. S., Hasan, M. M., Rakib, A., Emran, T. B., Xiao, J. & Simal-Gandara, J. 2021 Phytoremediation of toxic metals: A sustainable green solution for clean environment. *Applied Sciences* **11** (21), 10348.
- Badruzzaman, M., Pinzon, J., Oppenheimer, J. & Jacangelo, J. G. 2012 Sources of nutrients impacting surface waters in Florida: A review. *Journal of Environmental Management* **109**, 80–92.
- Baker, A. J. M. 1989 Terrestrial higher plants which hyperaccumulate metallic elements, A review of their distribution. *Biorecovery* **1**, 81–126.
- Baker, A. J. M., McGrath, S. P., Reeves, R. D., Smith, J. A. C., 2020 Metal Hyperaccumulator Plants: A Review of the Ecology and Physiology of a Biological Resource for Phytoremediation of Metal-Polluted Soils. In: *Phytoremediation of Contaminated Soil and Water* (Terry, N. & Banuelos, G. S., eds). Taylor & Francis, Boca Raton, 1st edn, pp. 85–107.
- Bakshe, P. & Jugade, R. 2023 Phytostabilization and rhizofiltration of toxic heavy metals by heavy metal accumulator plants for sustainable management of contaminated industrial sites: A comprehensive review. *Journal of Hazardous Materials Advances* **10**, 100293.
- Baqar, M., Arslan, M., Sadeq, Y., Mahmood, A., Qadir, A. & Ahmad, S. R. 2017 Persistent organic pollutants in Pakistan: Potential threat to ecological integrities in terms of genotoxicity and oxidative stress. *Human and Ecological Risk Assessment: An International Journal* **23** (6), 1249–1271.
- Baruah, S., Khan, M. N. & Dutta, J. 2016 Perspectives and applications of nanotechnology in water treatment. *Environmental Chemistry Letters* **14** (1), 1–14.
- Bashir, A., Malik, L. A., Ahad, S., Manzoor, T., Bhat, M. A., Dar, G. N. & Pandith, A. H. 2019 Removal of heavy metal ions from aqueous system by ion-exchange and biosorption methods. *Environmental Chemistry Letters* **17** (2), 729–754.
- Bayram, A., Önsoy, H., Bulut, V. N. & Akinçi, G. 2013 Influences of urban wastewaters on the stream water quality: A case study from Gumushane Province, Turkey. *Environmental Monitoring and Assessment* **185** (2), 1285–1303.
- Bhargava, A., Carmona, F. F., Bhargava, M. & Srivastava, S. 2012 Approaches for enhanced phytoextraction of heavy metals. *Journal of Environmental Management* **105**, 103–120.
- Bhat, S. A., Bashir, O., Ul Haq, S. A., Amin, T., Rafiq, A., Ali, M., Américo-Pinheiro, J. H. P. & Sher, F. 2022 Phytoremediation of heavy metals in soil and water: An eco-friendly, sustainable and multidisciplinary approach. *Chemosphere* **303**, 134788.
- Bokhari, S. H., Mahmood-Ul-Hassan, M. & Ahmad, M. 2019 Phytoextraction of Ni, Pb and, Cd by duckweeds. *International Journal of Phytoremediation* **21** (8), 799–806.
- Calzadilla, A., Rehdanz, K. & Tol, R. S. J. 2011 Water scarcity and the impact of improved irrigation management: A computable general equilibrium analysis. *Agricultural Economics* **42** (3), 305–323.
- Carles, L., Gardon, H., Joseph, L., Sanchís, J., Farré, M. & Artigas, J. 2019 Meta-analysis of glyphosate contamination in surface waters and dissipation by biofilms. *Environment International* **124**, 284–293.
- Castillo, C. R., Güneralp, İ. & Güneralp, B. 2014 Influence of changes in developed land and precipitation on hydrology of a coastal Texas watershed. *Applied Geography* **47**, 154–167.
- Chandekar, N. & Godbole, B. J. 2015 A review on phytoremediation A sustainable solution for treatment of kitchen wastewater. *International Journal of Science and Research* **6** (2), 1850–1855.
- Chen, Z., Taylor, A. A., Astor, S. R., Xin, J. & Terry, N. 2017a Removal of boron from wastewater: Evaluation of seven poplar clones for B accumulation and tolerance. *Chemosphere* **167**, 146–154.
- Chen, F., Huber, C. & Schröder, P. 2017b Fate of the sunscreen compound oxybenzone in *Cyperus alternifolius* based hydroponic culture: Uptake, biotransformation and phytotoxicity. *Chemosphere* **182**, 638–646.
- Chen, J., Liu, S. S., He, L. X., Cheng, Y. X., Ye, P., Li, J., Ying, G. G., Wang, Y. J. & Yang, F. 2021 The fate of sulfonamides in the process of phytoremediation in hydroponics. *Water Research* **198**, 117145.

- Chen, J., Liu, S. S., Wu, Q., Huang, W. J., Yang, F., Wang, Y. J., He, L. X., Ying, G. G., Chen, W. L. & Chen, C. E. 2023 Removal, fate, and bioavailability of fluoroquinolone antibiotics in a phytoremediation system with four wetland plants: Combining dynamic DGT and traditional methods. *Science of The Total Environment* **881**, 163464.
- Chowdhury, S., Mazumder, M. A. J., Al-Attas, O. & Husain, T. 2016 Heavy metals in drinking water: Occurrences, implications, and future needs in developing countries. *Science of The Total Environment* **569–570**, 476–488.
- Clemens, S., Ichael, M., Palmgren, G. & Krämer, U. 2002 A long way ahead: Understanding and engineering plant metal accumulation. *Trends in Plant Science* **7** (7), 309–315.
- Collins, C., Fryer, M. & Grosso, A. 2006 Plant uptake of non-ionic organic chemicals. *Environmental Science and Technology* **40** (1), 45–52.
- Connell, D. W., 2018 Pollution in tropical aquatic systems. In: (Connell, D. W. & Hawker, D. W., eds), CRC Press, Boca Raton.
- DalCorso, G., Fasani, E., Manara, A., Visioli, G. & Furini, A. 2019 Heavy metal pollutions: State of the Art and innovation in phytoremediation. *International Journal of Molecular Sciences* **20** (14), 3412.
- Dalvi, A. A. & Bhalerao, S. A. 2013 Response of plants towards heavy metal toxicity: An overview of avoidance, tolerance and uptake mechanism. *Annals of Plant Sciences* **2** (9), 362–368.
- Dary, M., Chamber-Pérez, M. A., Palomares, A. J. & Pajuelo, E. 2010 'In situ' phytostabilisation of heavy metal polluted soils using *Lupinus luteus* inoculated with metal resistant plant-growth promoting rhizobacteria. *Journal of Hazardous Materials* **177** (1–3), 323–330.
- Das, P. & Paul, K. K. 2023 Hydroponic rhizofiltration of dairy wastewater by *Coleus Scutellarioides* and *Portulaca Oleracea*. *Journal of Water Process Engineering* **52**, 103589.
- Davamani, V., Parameshwari, C. I., Arulmani, S., John, J. E. & Poornima, R. 2021 Hydroponic phytoremediation of paperboard mill wastewater by using vetiver (*Chrysopogon zizanioides*). *Journal of Environmental Chemical Engineering* **9** (4), 105528.
- De, A., Bose, R., Kumar, A. & Mozumdar, S. 2014 Pesticide Application in India. In: *Targeted Delivery of Pesticides Using Biodegradable Polymeric Nanoparticles*. Springer, New Delhi, pp. 7–9.
- Dehghani, S., Zupfer, K. R., Vasiluk, L., Dutton, M. D., Bellantino-Perco, M. & Hale, B. A. 2021 Modeling phytoremediation of aged soil Ni from anthropogenic deposition using *Alyssum murale*. *Chemosphere* **267**, 128861.
- Dettenmaier, E. M., Doucette, W. J. & Bugbee, B. 2009 Chemical hydrophobicity and uptake by plant roots. *Environmental Science and Technology* **43** (2), 324–329.
- Dordio, A. V. & Carvalho, A. J. P. 2013 Organic xenobiotics removal in constructed wetlands, with emphasis on the importance of the support matrix. *Journal of Hazardous Materials* **252–253**, 272–292.
- Ebele, A. J., Abdallah, M. A. E. & Harrad, S. 2017 Pharmaceuticals and personal care products (PPCPs) in the freshwater aquatic environment. *Emerging Contaminants* **3** (1), 1–16.
- Edwards, R. & Dixon, D. P., 2004 Metabolism of Natural and Xenobiotic Substrates by the Plant Glutathione S-Transferase Superfamily. In: *Molecular Ecotoxicology of Plants* (Sandermann, H., ed.). Springer, Berlin, pp. 17–50.
- Elehinafe, F. B., Agboola, O., Vershima, A. D. & Bamigboye, G. O. 2022 Insights on the advanced separation processes in water pollution analyses and wastewater treatment – A review. *South African Journal of Chemical Engineering* **42**, 188–200.
- Falahi, O. A. A. L., Abdullah, S. R. S., Hasan, H. A., Othman, A. R., Ewadh, H. M., Al-Baldawi, I. A., Sharuddin, S. S. N., Kurniawan, S. B. & Ismail, N. 'I. 2022 Elimination of mixed ibuprofen and paracetamol from spiked domestic wastewater via a pilot continuous aerated subsurface constructed wetland system. *Journal of Water Process Engineering* **50**, 103308.
- Farahat, E. A. & Galal, T. M. 2018 Trace metal accumulation by *Ranunculus sceleratus*: Implications for phytostabilization. *Environmental Science and Pollution Research* **25** (5), 4214–4222.
- Farid, M., Sajjad, A., Asam, Z. U. Z., Zubair, M., Rizwan, M., Abbas, M., Farid, S., Ali, S., Alharby, H. F., Alzahrani, Y. M. & Alabdallah, N. M. 2022 Phytoremediation of contaminated industrial wastewater by duckweed (*Lemna minor* L.): Growth and physiological response under acetic acid application. *Chemosphere* **304**, 135262.
- Farooq, S. & Khanday, M. U. D. 2020 Phytoremediation of heavy metals: A strategy for the removal of toxic metals from the environment using plants. *International Journal of Chemical Studies* **8** (3), 318–326.
- Farraji, H., Zaman, N. Q., Tajuddin, R. & Faraji, H. 2016 Advantages and disadvantages of phytoremediation: A concise review. *International Journal of Environmental Science and Technology* **2**, 69–75.
- Fernandez, M. A. L. 2014 *Phytoremediation of Different Wastewaters Using Energy Crops*. PhD thesis.
- Freeman, A. M., Lamon, E. C. & Stow, C. A. 2009 Nutrient criteria for lakes, ponds, and reservoirs: A Bayesian TREED model approach. *Ecological Modelling* **220** (5), 630–639.
- Fulekar, M. H., Singh, A. & Bhaduri, A. M. 2009 Genetic engineering strategies for enhancing phytoremediation of heavy metals. *African Journal of Biotechnology* **8** (4), 529–535.
- Futughe, A. E., Purchase, D. & Jones, H., 2020 Phytoremediation Using Native Plants. In: *Phytoremediation* (Shmaefsky, B., ed.). Springer, Cham, pp. 285–327.
- Galal, T. M., Gharib, F. A., Ghazi, S. M. & Mansour, K. H. 2017 Phytostabilization of heavy metals by the emergent macrophyte *Vossia cuspidata* (Roxb.) Griff.: A phytoremediation approach. *International Journal of Phytoremediation* **19** (11), 992–999.
- Gao, J., Zhang, J., Ma, N., Wang, W., Ma, C. & Zhang, R. 2015 Cadmium removal capability and growth characteristics of *Iris sibirica* in subsurface vertical flow constructed wetlands. *Ecological Engineering* **84**, 443–450.
- Gawronski, S. W., Greger, M., Gawronska, H., 2011 Plant Taxonomy and Metal Phytoremediation. In: *Detoxification of Heavy Metals* (Sherameti, I. & Varma, A., eds). Springer, Berlin, Heidelberg, pp. 91–109.



- Ghosh, M. & Singh, S. P. 2005 Asian journal on energy and environment A review on phytoremediation of heavy metals and utilization of it's by products. *Asian Journal of Energy and Environment* **6** (04), 214–231.
- Giri, S., Nejadhashemi, A. P., Woznicki, S. & Zhang, Z. 2014 Analysis of best management practice effectiveness and spatiotemporal variability based on different targeting strategies. *Hydrological Processes* **28** (3), 431–445.
- Gnansounou, E., Alves, C. M. & Raman, J. K. 2017 Multiple applications of vetiver grass-a review. *International Journal of Education and Learning Systems* **2**, 125–141.
- Goala, M., Yadav, K. K., Alam, J., Adelodun, B., Choi, K. S., Cabral-Pinto, M. M. S., Hamid, A. A., Alhoshan, M., Ali, F. A. A. & Shukla, A. K. 2021 Phytoremediation of dairy wastewater using *Azolla pinnata*: Application of image processing technique for leaflet growth simulation. *Journal of Water Process Engineering* **42**, 102152.
- Gonçalves, J. F., Becker, A. G., Cargnelutti, D., Tabaldi, L. A., Pereira, L. B., Battisti, V. & Schetinger, M. R. 2007 Cadmium toxicity causes oxidative stress and induces response of the antioxidant system in cucumber seedlings. *Brazilian Journal of Plant Physiology* **19**, 223–232.
- Goren, A. Y., Yucel, A., Sofuoglu, S. C. & Sofuoglu, A. 2021 Phytoremediation of olive mill wastewater with *Vetiveria zizanioides* (L.) Nash and *Cyperus alternifolius* L. *Environmental Technology and Innovation* **24**, 1–12.
- Guerinot, M. L. & Salt, D. E. 2001 Fortified foods and phytoremediation. Two sides of the same coin. *Plant Physiology* **125** (1), 164–167.
- Gupta, D. K., Corpas, F. J., Palma, J. M., 2013 Role of Phytochelatins in Heavy Metal Stress and Detoxification Mechanisms in Plants. In: *Heavy Metal Stress in Plants* (Gupta, D., Corpas, F. & Palma, J., eds). Springer, Berlin, Heidelberg.
- Haghnazar, H., Hudson-Edwards, K. A., Kumar, V., Pourakbar, M., Mahdavianpour, M. & Aghayani, E. 2021 Potentially toxic elements contamination in surface sediment and indigenous aquatic macrophytes of the Bahmanshir River, Iran: Appraisal of phytoremediation capability. *Chemosphere* **285**, 131446.
- Han, H. & Allan, J. D. 2012 Uneven rise in N inputs to the lake Michigan Basin over the 20th century corresponds to agricultural and societal transitions. *Biogeochemistry* **109** (1–3), 175–187.
- He, M., Xu, Z., Hou, D., Gao, B., Cao, X., Ok, Y. S., Rinklebe, J., Bolan, N. S. & Tsang, D. C. W. 2022 Waste-derived biochar for water pollution control and sustainable development. *Nature Reviews Earth & Environment* **3** (7), 444–460.
- Ishaq, H. K., Farid, M., Zubair, M., Alharby, H. F., Asam, Z. U. Z., Farid, S., Bamagoos, A. A., Alharbi, B. M., Shakoor, M. B., Ahmad, S. R., Rizwan, M. & Ali, S. 2021 Efficacy of *Lemna minor* and *Typha latifolia* for the treatment of textile industry wastewater in a constructed wetland under citric acid amendment: A lab scale study. *Chemosphere* **283**, 131107.
- Ismail, N., Abdullah, S. R. S. I., Idris, M., Kurniawan, S. B., Halmi, M. I. E., Sbani, N. H. A., Jehawi, O. H. & Hasan, H. A. 2020 Applying rhizobacteria consortium for the enhancement of *Scirpus grossus* growth and phytoaccumulation of Fe and Al in pilot constructed wetlands. *Journal of Environmental Management* **267**, 110643.
- Jabeen, R., Ahmad, A. & Iqbal, M. 2009 Phytoremediation of heavy metals: Physiological and molecular mechanisms. *The Botanical Review* **75** (4), 339–364.
- Järup, L. 2003 Hazards of heavy metal contamination. *British Medical Bulletin* **68** (1), 167–182.
- Jaskulak, M., Grobelak, A. & Vandenbulcke, F. 2020 Modelling assisted phytoremediation of soils contaminated with heavy metals – main opportunities, limitations, decision making and future prospects. *Chemosphere* **249**, 126196.
- Javadian, H. 2014 Application of kinetic, isotherm and thermodynamic models for the adsorption of Co(II) ions on polyaniline/polypyrrole copolymer nanofibers from aqueous solution. *Journal of Industrial and Engineering Chemistry* **20** (6), 4233–4241.
- Jayaweera, M. W., Kasturiarachchi, J. C., Kularatne, R. K. A. & Wijeyekoon, S. L. J. 2008 Contribution of water hyacinth (*Eichhornia crassipes* (Mart.) Solms) grown under different nutrient conditions to Fe-removal mechanisms in constructed wetlands. *Journal of Environmental Management* **87** (3), 450–460.
- Jeevanantham, S., Saravanan, A., Hemavathy, R. V., Kumar, P. S., Yaashikaa, P. R. & Yuvaraj, D. 2019 Removal of toxic pollutants from water environment by phytoremediation: A survey on application and future prospects. *Environmental Technology & Innovation* **13**, 264–276.
- Jha, G., Kawatra, N. & Dubey, A. 2023 Phytoremediation of selected heavy metals contaminated water by *Amaranthus hybridus* in hydroponic system. *Materials Today: Proceedings* **90**, 12–17.
- Joseph, L., Jun, B. M., Flora, J. R. V., Park, C. M. & Yoon, Y. 2019 Removal of heavy metals from water sources in the developing world using low-cost materials: A review. *Chemosphere* **229**, 142–159.
- Kafle, A., Timilsina, A., Gautam, A., Adhikari, K., Bhattarai, A. & Aryal, N. 2022 Phytoremediation: Mechanisms, plant selection and enhancement by natural and synthetic agents. *Environmental Advances* **8**, 100203.
- Khan, A. H. A., Nawaz, I., Yousaf, S., Cheema, A. S. & Iqbal, M. 2019 Soil amendments enhanced the growth of *Nicotiana glauca* L. and *Petunia hybrida* L. by stabilizing heavy metals from wastewater. *Journal of Environmental Management* **242**, 46–55.
- Khan, M. I., Cheema, S. A., Anum, S., Niazi, N. K., Azam, M., Bashir, S., Ashraf, I. & Qadri, R., 2020 Phytoremediation of Agricultural Pollutants. In: *Phytoremediation* (Shmaefsky, B., ed.). Springer, Cham, pp. 27–81.
- Khan, S., Masoodi, T. H., Pala, N. A., Murtaza, S., Mugloo, J. A., Sofi, P. A., Zaman, M. U., Kumar, R. & Kumar, A. 2023 Phytoremediation prospects for restoration of contamination in the natural ecosystems. *Water* **15** (8), 1498.
- Khatib, R., El Lartiges, B. S., Samrani, A., El Faure, P., Houhou, J. & Ghanbaja, J. 2012 Speciation of organic matter and heavy metals in urban wastewaters from an emerging country. *Water, Air, & Soil Pollution* **223** (8), 4695–4708.
- Komives, T. & Gullner, G. 2005 Phase I xenobiotic metabolic systems in plants. *Z Naturforsch* **60**, 179–185.



- Kristanti, R. A. & Hadibarata, T. 2023 [Phytoremediation of contaminated water using aquatic plants, its mechanism and enhancement](#). *Current Opinion in Environmental Science & Health* **32**, 100451.
- Kumarasinghe, U., Inoue, Y., Saito, T., Nagamori, M., Sakamoto, Y., Mowjood, M. I. M. & Kawamoto, K. 2017 [Temporal variations in perched water and groundwater qualities at an open solid waste dumpsite in Sri Lanka](#). *International Journal of GEOMATE* **13** (38), 1–8.
- Kvenvolden, K. A. & Cooper, C. K. 2003 [Natural seepage of crude oil into the marine environment](#). *Geo-Marine Letters* **23** (3–4), 140–146.
- Kvesitadze, G., Khatishashvili, G., Sadunishvili, T., Kvesitadze, E., 2015 [Plants for Remediation: Uptake, Translocation and Transformation of Organic Pollutants](#). In: *Plants, Pollutants and Remediation* (Öztürk, M., Ashraf, M., Aksoy, A., Ahmad, M. & Hakeem, K., eds). Springer, Dordrecht, pp. 241–308.
- Lacalle, R. G., Bernal, M. P., Álvarez-Robles, M. J. & Clemente, R. 2023 [Phytostabilization of soils contaminated with As, Cd, Cu, Pb and Zn: Physicochemical, toxicological and biological evaluations](#). *Soil & Environmental Health* **1** (2), 100014.
- Laidlaw, W. S., Baker, A. J. M., Gregory, D. & Arndt, S. K. 2015 [Irrigation water quality influences heavy metal uptake by willows in biosolids](#). *Journal of Environmental Management* **155**, 31–39.
- Lajayer, B. A., Moghadam, N. K., Maghsoodi, M. R., Ghorbanpour, M. & Kariman, K. 2019 [Phytoextraction of heavy metals from contaminated soil, water and atmosphere using ornamental plants: Mechanisms and efficiency improvement strategies](#). *Environmental Science and Pollution Research* **26** (9), 8468–8484.
- Lakshmi, K. S., Sailaja, V. H. & Reddy, M. A. 2017 [Phytoremediation – A promising technique in waste water treatment](#). *International Journal of Scientific Research and Management* **5** (6), 5480–5489.
- Lata, S. & Siddharth, 2021 [Sustainable and eco-friendly approach for controlling industrial wastewater quality imparting succour in water-energy nexus system](#). *Energy Nexus* **3**, 100020.
- Lee, M. & Yang, M. 2010 [Rhizofiltration using sunflower \(\*Helianthus annuus\* L.\) and bean \(\*Phaseolus vulgaris\* L. var. \*vulgaris\*\) to remediate uranium contaminated groundwater](#). *Journal of Hazardous Materials* **173** (1–3), 589–596.
- Leguizamo, M. A. O., Gómez, W. D. F. & Sarmiento, M. C. G. 2017 [Native herbaceous plant species with potential use in phytoremediation of heavy metals, spotlight on wetlands – A review](#). *Chemosphere* **168**, 1230–1247.
- Li, Y. M., Chaney, R. L., Brewer, E. P., Angle, J. S. & Nelkin, J. 2003 [Phytoextraction of nickel and cobalt by hyperaccumulator \*Alyssum\* species grown on nickel-contaminated soils](#). *Environmental Science & Technology* **37** (7), 1463–1468.
- Limmer, M. A. & Burken, J. G. 2014 [Plant translocation of organic compounds: Molecular and physicochemical predictors](#). *Environmental Science & Technology Letters* **1** (2), 156–161.
- Limmer, M. & Burken, J. 2016 [Phytovolatilization of organic contaminants](#). *Environmental Science & Technology* **50** (13), 6632–6643.
- Liu, J. G., Li, G. H., Shao, W. C., Xu, J. K. & Wang, D. K. 2010 [Variations in uptake and translocation of copper, chromium and nickel among nineteen wetland plant species](#). *Pedosphere* **20** (1), 96–103.
- Liu, Z., Chen, B., Wang, L., Urbanovich, O., Nagorskaya, L., Li, X. & Tang, L. 2020 [A review on phytoremediation of mercury contaminated soils](#). *Journal of Hazardous Materials* **400**, 123138.
- Liu, J., Chen, K., Zhang, R., Hou, T., Yang, P., Zhang, K., Yang, F. & Pan, J. 2023 [Effects of nitric oxide on the phytoremediation of swine wastewater by \*Pistia stratiotes\* under copper stress](#). *Journal of Cleaner Production* **424**, 138680.
- Lu, F. & Astruc, D. 2018 [Nanomaterials for removal of toxic elements from water](#). *Coordination Chemistry Reviews* **356**, 147–164.
- Lu, B., Xu, Z., Li, J. & Chai, X. 2018 [Removal of water nutrients by different aquatic plant species: An alternative way to remediate polluted rural rivers](#). *Ecological Engineering* **110**, 18–26.
- Madima, N., Mishra, S. B., Inamuddin, I. & Mishra, A. K. 2020 [Carbon-based nanomaterials for remediation of organic and inorganic pollutants from wastewater. A review](#). *Environmental Chemistry Letters* **18** (4), 1169–1191.
- Mahar, A., Wang, P., Ali, A., Awasthi, M. K., Lahori, A. H., Wang, Q., Li, R. & Zhang, Z. 2016 [Challenges and opportunities in the phytoremediation of heavy metals contaminated soils: A review](#). *Ecotoxicology and Environmental Safety* **126**, 111–121.
- Mahboob, W., Yang, G. & Irfan, M. 2023 [Crop nitrogen \(N\) utilization mechanism and strategies to improve N use efficiency](#). *Acta Physiologiae Plantarum* **45** (4), 52.
- Mahmood, I., Imadi, S. R., Shazadi, K., Gul, A., Hakeem, K. R., 2016 [Effects of Pesticides on Environment](#). In: *Plant, Soil and Microbes* (Hakeem, K., Akhtar, M. & Abdullah, S., eds). Springer International Publishing, Cham, pp. 253–269.
- Mahmud, H. N. M. E., Huq, A. K. O. & Yahya, R. B. 2016 [The removal of heavy metal ions from wastewater/aqueous solution using polypyrrole-based adsorbents: A review](#). *RSC Advances* **6** (18), 14778–14791.
- Malecka, A. & Tomaszewska, B. 2005 [Reactive oxygen species in plant cells and antioxidative defence systems](#). *Postepy Biologii Komórki* **32**, 311–325.
- Malik, D. S., Jain, C. K. & Yadav, A. K. 2017 [Removal of heavy metals from emerging cellulosic low-cost adsorbents: A review](#). *Applied Water Science* **7** (5), 2113–2136.
- Malik, L. A., Bashir, A., Qureashi, A. & Pandith, A. H. 2019 [Detection and removal of heavy metal ions: A review](#). *Environmental Chemistry Letters* **17** (4), 1495–1521.
- Mamun, A. A., Rahman, M. M., Huq, M. A., Rahman, M. M., Rana, M. R., Rahman, S. T., Khatun, M. L. & Alam, M. K. 2024 [Phytoremediation: A transgenic perspective in omics era](#). *Transgenic Research* **33**, 1–20.
- Manara, A., 2012 [Plant Responses to Heavy Metal Toxicity](#). In: *Plants and Heavy Metals* (Furini, A., ed.). Springer, Dordrecht, pp. 27–53.
- Masinire, F. F., Adenuga, D. O., Tichapondwa, S. M. & Chirwa, E. M. N. 2020 [Remediation of Chromium\(VI\) containing wastewater using \*Chrysopogon zizanioides\* \(Vetiver Grass\)](#). *Chemical Engineering Transactions* **79**, 385–390.

- Materac, M., Wyrwicka, A. & Sobiecka, E. 2015 Phytoremediation techniques in wastewater treatment. *Environmental Biotechnology* **11** (1), 10–13.
- McGrath, S. P. & Zhao, F. J. 2003 'Phytoextraction of metals and metalloids from contaminated soils. *Current Opinion in Biotechnology* **14** (3), 277–282.
- Meghla, N. T., Islam, M. S., Ali, M. A., Suravi, S. & Sultana, N. 2013 Assessment of physicochemical properties of water from the Turag River in Dhaka City, Bangladesh. *International Journal of Current Microbiology and Applied Sciences* **2** (5), 110–122.
- Mfarrej, M. F. B., Wang, X., Fahid, M., Saleem, M. H., Alatawi, A., Ali, S., Shabir, G., Zafar, R., Afzal, M. & Fahad, S. 2023 Floating treatment wetlands (FTWs) is an innovative approach for the remediation of petroleum hydrocarbons-Contaminated water. *Journal of Plant Growth Regulation* **42** (3), 1402–1420.
- Mirza, N., Mahmood, Q., Pervez, A., Ahmad, R., Farooq, R., Shah, M. M. & Azim, M. R. 2010 Phytoremediation potential of *Arundo donax* in arsenic-contaminated synthetic wastewater. *Bioresource Technology* **101** (15), 5815–5819.
- Mirzaee, M. M., ZakeriNia, M. & Farasati, M. 2021 The effects of phytoremediation of treated urban wastewater on the discharge of surface and subsurface drippers (Case study: Gorgan wastewater treatment plant in northern Iran). *Cleaner Engineering and Technology* **4**, 100210.
- Mohsin, M., Salam, M. M. A., Nawrot, N., Kaipainen, E., Lane, D. J., Wojciechowska, E., Kinnunen, N., Heimonen, M., Tervahauta, A., Peräniemi, S., Sippula, O., Pappinen, A. & Kuittinen, S. 2022 Phytoextraction and recovery of rare earth elements using willow (*Salix spp.*). *Science of the Total Environment* **809**, 1–12.
- Mohsin, M., Nawrot, N., Wojciechowska, E., Kuittinen, S., Szczepańska, K., Dembska, G. & Pappinen, A. 2023 Cadmium accumulation by *Phragmites australis* and *Iris pseudacorus* from stormwater in floating treatment wetlands microcosms: Insights into plant tolerance and utility for phytoremediation. *Journal of Environmental Management* **331**, 117339.
- Monferrán, M. V., Pignata, M. L. & Wunderlin, D. A. 2012 Enhanced phytoextraction of chromium by the aquatic macrophyte *Potamogeton pusillus* in presence of copper. *Environmental Pollution* **161**, 15–22.
- Mukhopadhyay, S. & Maiti, S. K. 2010 Phytoremediation of metal mine waste. *Applied Ecology and Environmental Research* **8** (3), 207–222.
- Mustafa, H. M. & Hayder, G. 2021 Cultivation of *S. molesta* plants for phytoremediation of secondary treated domestic wastewater. *Ain Shams Engineering Journal* **12** (3), 2585–2592.
- Muszyńska, E. & Hanus-Fajerska, E. 2015 Why are heavy metal hyperaccumulating plants so amazing? *Biotechnologia* **96** (4), 265–271.
- Mwanamoki, P. M., Devarajan, N., Niane, B., Ngelinkoto, P., Thevenon, F., Nlandu, J. W., Mpiana, P. T., Prabakar, K., Mubedi, J. I., Kabele, C. G., Wildi, W. & Poté, J. 2015 Trace metal distributions in the sediments from river-reservoir systems: Case of the Congo river and lake Ma Vallée, Kinshasa (Democratic Republic of Congo). *Environmental Science and Pollution Research* **22** (1), 586–597.
- Nabuyanda, M. M., Kelderman, P., Bruggen, J. v. & Irvine, K. 2022 Distribution of the heavy metals Co, Cu, and Pb in sediments and *Typha spp.* And *Phragmites mauritianus* in three Zambian wetlands. *Journal of Environmental Management* **304**, 114133.
- Nath, B., Chaudhuri, P. & Birch, G. 2014 Assessment of biotic response to heavy metal contamination in *Avicennia marina* mangrove ecosystems in Sydney Estuary, Australia. *Ecotoxicology and Environmental Safety* **107**, 284–290.
- Nedjimi, B. 2009 Can calcium protect *Atriplex halimus* subsp. *schweinfurthii* against cadmium toxicity? *Acta Botanica Gallica* **156** (3), 391–397.
- Nedjimi, B. 2021 Phytoremediation: A sustainable environmental technology for heavy metals decontamination. *SN Applied Sciences* **3** (3), 286.
- Nedjimi, B. & Daoud, Y. 2009 Cadmium accumulation in *Atriplex halimus* subsp. *schweinfurthii* and its influence on growth, proline, root hydraulic conductivity and nutrient uptake. *Flora – Morphology, Distribution, Functional Ecology of Plants* **204** (4), 316–324.
- Negrini, A., Silva, R. F., Welter, P. D., Giovenardi, A. R., Soriani, H. H. & Ros, C. O. 2022 Swine wastewater compost and arbuscular mycorrhizal fungi in the growth and accumulation of copper in *Eucalyptus grandis*. *Rhizosphere* **24**, 100624.
- Newete, S. W. & Byrne, M. J. 2016 The capacity of aquatic macrophytes for phytoremediation and their disposal with specific reference to water hyacinth. *Environmental Science and Pollution Research* **23** (11), 10630–10643.
- Nguyen, T. G. & Huynh, N. T. H. 2023 Characterization of groundwater quality and human health risk assessment. *Civil Engineering Journal* **9** (3), 618–628.
- Obida, C. B., Blackburn, G. A., Whyatt, J. D. & Semple, K. T. 2018 Quantifying the exposure of humans and the environment to oil pollution in the Niger Delta using advanced geostatistical techniques. *Environment International* **111**, 32–42.
- Ogundola, A. F., Adebayo, E. A. & Ajao, S. O. 2022 Phytoremediation: The ultimate technique for reinstating soil contaminated with heavy metals and other pollutants. In: *Phytoremediation Technology for the Removal of Heavy Metals and Other Contaminants From Soil and Water* (Kumar, V., Shah, M. P. & Shahi, S. K., eds). Elsevier, Amsterdam, pp. 19–49.
- Olguín, E. J., García-López, D. A., González-Portela, R. E. & Sánchez-Galván, G. 2017 Year-round phytofiltration lagoon assessment using *Pistia stratiotes* within a pilot-plant scale biorefinery. *Science of The Total Environment* **592**, 326–333.
- Outridge, P. M. & Noller, B. N., 1991 Accumulation of Toxic Trace Elements by Freshwater Vascular Plants. In: *Reviews of Environmental Contamination and Toxicology* (Ware, G. W., ed.). Springer, New York, pp. 1–63.
- Padhan, D., Rout, P. P., Kundu, R., Adhikary, S., Padhi, P. P., 2021 Bioremediation of Heavy Metals and Other Toxic Substances by Microorganisms. In: *Soil Bioremediation* (Parray, J. A., Mahmoud, A. H. A. E. & Sayyedpp, R., eds). Wiley, Hoboken, pp. 285–329.
- Padmavathamma, P. K. & Li, L. Y. 2007 Phytoremediation technology: Hyper-accumulation metals in plants. *Water, Air, and Soil Pollution* **184** (1–4), 105–126.

- Pajević, S., Borišev, M., Nikolić, N., Arsenov, D. D., Orlović, S., Župunski, M., 2016 Phytoextraction of heavy metals by fast-growing trees: A review. In: *Phytoremediation: Management of Environmental Contaminants* (Ansari, A., Gill, S., Gill, R., Lanza, G. & Newman, L., eds). Springer, Cham, pp. 29–64.
- Pardo, T., Martínez-Fernández, D., la Fuente, C., Clemente, R., Komárek, M. & Bernal, M. P. 2016 Maghemite nanoparticles and ferrous sulfate for the stimulation of iron plaque formation and arsenic immobilization in *Phragmites australis*. *Environmental Pollution* **219**, 296–304.
- Parihar, A. & Malaviya, P. 2023 Textile wastewater phytoremediation using *Spirodela polyrhiza* (L.) Schleid. assisted by novel bacterial consortium in a two-step remediation system. *Environmental Research* **221**, 115307.
- Petoussi, M. A. & Kalogerakis, N. 2022 Olive mill wastewater phytoremediation employing economically important woody plants. *Journal of Environmental Management* **302**, 114076.
- Pivetz, B. E. 2001 *Phytoremediation of Contaminated Soil and Ground Water at Hazardous Waste Sites*. U.S. Environmental Protection Agency, Office of Research and Development, Office of Solid Waste and Emergency Response, Washington, DC.
- Prasad, M. N. V. & de Oliveira Freitas, H. M. 2003 Metal hyperaccumulation in plants – biodiversity prospecting for phytoremediation technology. *Electronic Journal of Biotechnology* **6** (3), 285–321.
- Prasad, J., Tiwari, S., Singh, B. K. & Dubey, N. K. 2022 Phytoextraction of heavy metals: Challenges and opportunities. In: *Phytoremediation Technology for the Removal of Heavy Metals and Other Contaminants From Soil and Water* (Kumar, V., Shah, M. P. & Shahi, S. K., eds). Elsevier, Amsterdam, pp. 173–187.
- Qadir, A., Hameed, M. A., Zafar, M. S. B., Farooqi, Z. U. R., Younas, F., Hussain, M. M. & Mohy-Ud-Din, W. 2020 Phytoremediation of inorganic pollutants: An eco-friendly approach, its types and mechanisms. *Plant and Environment* **2** (01), 110–130.
- Qin, H., Diao, M., Zhang, Z., Visser, P. M., Zhang, Y., Wang, Y. & Yan, S. 2020 Responses of phytoremediation in urban wastewater with water hyacinths to extreme precipitation. *Journal of Environmental Management* **271**, 1–10.
- Queiroz, R. C. S., Maranduba, H. L., Hafne, M. B., Rodrigues, L. B. & Neto, J. A. A. 2020 Life cycle thinking applied to phytoremediation of dairy wastewater using aquatic macrophytes for treatment and biomass production. *Journal of Cleaner Production* **267**, 122006.
- Radziemska, M., Vaverková, M. & Baryła, A. 2017 Phytostabilization – management strategy for stabilizing trace elements in contaminated soils. *International Journal of Environmental Research and Public Health* **14** (9), 958.
- Rai, P. K., Kim, K. H., Lee, S. S. & Lee, J. H. 2020 Molecular mechanisms in phytoremediation of environmental contaminants and prospects of engineered transgenic plants/microbes. *Science of The Total Environment* **705**, 135858.
- Rascio, N. & Navari-Izzo, F. 2011 Heavy metal hyperaccumulating plants: How and why do they do it? And what makes them so interesting? *Plant Science* **180** (2), 169–181.
- Raskin, I. & Ensley, B. D. 2000 *Phytoremediation of Toxic Metals*. John Wiley and Sons, New Jersey.
- Ravichandran, M. K. & Philip, L. 2022 Assessment of the contribution of various constructed wetland components for the removal of pharmaceutically active compounds. *Journal of Environmental Chemical Engineering* **10** (3), 107835.
- Raza, M., Nosheen, A., Yasmin, H., Naz, R., Shah, S. M. U., Ambreen, J. & El-Sheikh, M. A. 2023 Application of aquatic plants alone as well as in combination for phytoremediation of household and industrial wastewater. *Journal of King Saud University – Science* **35** (7), 102805.
- Rezania, S., Ponraj, M., Talaiekhazani, A., Mohamad, S. E., Md Din, M. F., Taib, S. M., Sabbagh, F. & Sairan, F. M. 2015 Perspectives of phytoremediation using water hyacinth for removal of heavy metals, organic and inorganic pollutants in wastewater. *Journal of Environmental Management* **163**, 125–133.
- Riyaz, M., Ahmad Shah, R., Sivasankaran, K., 2022 Pesticide Residues: Impacts on Fauna and the Environment. In: *Biodegradation Technology of Organic and Inorganic Pollutants* (Mendes, K. F., De Sousa, R. & Mielke, K. C., eds). IntechOpen, London, pp. 39.
- Robinson, B. H., Anderson, C. W. N. & Dickinson, N. M. 2015 Phytoextraction: Where's the action? *Journal of Geochemical Exploration* **151**, 34–40.
- Rodríguez, M. & Brisson, J. 2015 Pollutant removal efficiency of native versus exotic common reed (*Phragmites australis*) in North American treatment wetlands. *Ecological Engineering* **74**, 364–370.
- Sakari, M., Zakaria, M. P., Md. Junos, M. B., Annuar, N. A., Yun, H. Y., Heng, Y. S., Syed Zainuddin, S. M. H. & Chai, K. L. 2008 Spatial distribution of petroleum hydrocarbon in sediments of major rivers from east coast of peninsular Malaysia. *Coastal Marine Science* **32** (1), 9–18.
- Salam, M. M. A., Mohsin, M., Pulkkinen, P., Pelkonen, P. & Pappinen, A. 2019 Effects of soil amendments on the growth response and phytoextraction capability of a willow variety (*S. viminalis* × *S. schwerinii* × *S. dasyclados*) grown in contaminated soils. *Ecotoxicology and Environmental Safety* **171**, 753–770.
- Schwitzguébel, J. P., Comino, E., Plata, N. & Khalvati, M. 2011 Is phytoremediation a sustainable and reliable approach to clean-up contaminated water and soil in Alpine areas? *Environmental Science and Pollution Research* **18** (6), 842–856.
- Segura, A. & Ramos, J. L. 2013 Plant–bacteria interactions in the removal of pollutants. *Current Opinion in Biotechnology* **24** (3), 467–473.
- Seth, C. S. 2012 A review on mechanisms of plant tolerance and role of transgenic plants in environmental clean-up. *The Botanical Review* **78** (1), 32–62.
- Shaheen, S. M., Shams, M. S., Khalifa, M. R., El-Dali, M. A. & Rinklebe, J. 2017 Various soil amendments and environmental wastes affect the (im)mobilization and phytoavailability of potentially toxic elements in a sewage effluent irrigated sandy soil. *Ecotoxicology and Environmental Safety* **142**, 375–387.



- Shanker, U., Rani, M. & Jassal, V. 2017 Degradation of hazardous organic dyes in water by nanomaterials. *Environmental Chemistry Letters* **15** (4), 623–642.
- Sharma, P., Tripathi, S., Chaturvedi, P., Chaurasia, D. & Chandra, R. 2021 Newly isolated *Bacillus* sp. PS-6 assisted phytoremediation of heavy metals using *Phragmites communis*: Potential application in wastewater treatment. *Bioresource Technology* **320**, 124353.
- Shen, X., Dai, M., Yang, J., Sun, L., Tan, X., Peng, C., Ali, I. & Naz, I. 2022 A critical review on the phytoremediation of heavy metals from environment: Performance and challenges. *Chemosphere* **291**, 132979.
- Singh, O. V. & Jain, R. K. 2003 Phytoremediation of toxic aromatic pollutants from soil. *Applied Microbiology and Biotechnology* **63** (2), 128–135.
- Singh, V., Pandey, B. & Suthar, S. 2018 Phytotoxicity of amoxicillin to the duckweed *Spirodela polyrhiza*: Growth, oxidative stress, biochemical traits and antibiotic degradation. *Chemosphere* **201**, 492–502.
- Singh, V., Pandey, B. & Suthar, S. 2019 Phytotoxicity and degradation of antibiotic ofloxacin in duckweed (*Spirodela polyrhiza*) system. *Ecotoxicology and Environmental Safety* **179**, 88–95.
- Singh, B. S. M., Singh, D. & Dhal, N. K. 2022 Enhanced phytoremediation strategy for sustainable management of heavy metals and radionuclides. *Case Studies in Chemical and Environmental Engineering* **5**, 100176.
- Sinha, V., Manikandan, N. A., Pakshirajan, K. & Chaturvedi, R. 2017 Continuous removal of Cr(VI) from wastewater by phytoextraction using *Tradescantia pallida* plant based vertical subsurface flow constructed wetland system. *International Biodeterioration & Biodegradation* **119**, 96–103.
- Slocombe, S. P., Zúñiga-Burgos, T., Chu, L., Wood, N. J., Camargo-Valero, M. A. & Baker, A. 2020 Fixing the broken phosphorus cycle: Wastewater remediation by microalgal polyphosphates. *Frontiers in Plant Science* **11**, 982.
- Soda, S., Hamada, T., Yamaoka, Y., Ike, M., Nakazato, H., Saeki, Y., Kasamatsu, T. & Sakurai, Y. 2012 Constructed wetlands for advanced treatment of wastewater with a complex matrix from a metal-processing plant: Bioconcentration and translocation factors of various metals in *Acorus gramineus* and *Cyperus alternifolius*. *Ecological Engineering* **39**, 63–70.
- Sricoth, T., Meeinkuirt, W., Pichtel, J., Taerprayoon, P. & Saengwilai, P. 2018 Synergistic phytoremediation of wastewater by two aquatic plants (*Typha angustifolia* and *Eichhornia crassipes*) and potential as biomass fuel. *Environmental Science and Pollution Research* **25** (6), 5344–5358.
- Sridhar, S. G. D., Sakthivel, A. M., Sangunathan, U., Balasubramanian, M., Jenefer, S., Rafik, M. M. & Kanagaraj, G. 2017 Heavy metal concentration in groundwater from besant nagar to sathankuppam, south chennai, tamil nadu, India. *Applied Water Science* **7** (8), 4651–4662.
- Srivastava, S., Sounderajan, S., Udas, A. & Suprasanna, P. 2014 Effect of combinations of aquatic plants (*Hydrilla*, *Ceratophyllum*, *Eichhornia*, *Lemna* and *Wolffia*) on arsenic removal in field conditions. *Ecological Engineering* **73**, 297–301.
- Starck, Z. 2005 Plant responses to the abiotic environmental stresses-acclimatization and adaptation. *Grassland Sci Pol* **8**, 173–154.
- Strother, T., Lowry, S., Fisher Scientific, T. & Barbara Bravo, U. 2013 *Measurement of Dispersed Oil in Water Using an Infrared Analysis Method*. Available from: <https://analysis.rs/wp-content/uploads/2022/01/9132023968-min.pdf> (accessed 01 August 2024).
- Syafrudin, M., Kristanti, R. A., Yuniarto, A., Hadibarata, T., Rhee, J., Al-onazi, W. A., Algarni, T. S., Almarri, A. H. & Al-Mohaimed, A. M. 2021 Pesticides in drinking water – A review. *International Journal of Environmental Research and Public Health* **18** (2), 468.
- Sytar, O., Ghosh, S., Malinska, H., Zivcak, M. & Brestic, M. 2020 Physiological and molecular mechanisms of metal accumulation in hyperaccumulator plants. *Physiologia Plantarum*, ppl. **13285**, 148–166.
- Tahir, M. B., Nawaz, T., Nabi, G., Sagir, M., Khan, M. I. & Malik, N. 2022 Role of nanophotocatalysts for the treatment of hazardous organic and inorganic pollutants in wastewater. *International Journal of Environmental Analytical Chemistry* **102** (2), 491–515.
- Tahiri, V., Denaj, A. & Prenga, D. 2023 Assessment of the presence of pharmaceutical compounds in wastewaters and in aquatic environment. *Journal of Human, Earth, and Future* **4**, 3.
- Takkar, S., Shandilya, C., Agrahari, R., Chaurasia, A., Vishwakarma, K., Mohapatra, S., Varma, A. & Mishra, A. 2022 Green technology: Phytoremediation for pesticide pollution. In: *Phytoremediation Technology for the Removal of Heavy Metals and Other Contaminants From Soil and Water* (Kumar, V., Shah, M. P. & Shahi, S. K., eds). Elsevier, Amsterdam, pp. 353–375.
- Talaiekhozani, A. & Rezanian, S. 2017 Application of photosynthetic bacteria for removal of heavy metals, macro-pollutants and dye from wastewater: A review. *Journal of Water Process Engineering* **19**, 312–321.
- Tangahu, B. V., Abdullah, S. R. S., Basri, H., Idris, M., Anuar, N. & Mukhlisin, M. 2022 Lead (Pb) removal from contaminated water using constructed wetland planted with *Scirpus grossus*: Optimization using response surface methodology (RSM) and assessment of rhizobacterial addition. *Chemosphere* **291**, 132952.
- Tarannum, N., Khan, R., 2020 Cost-Effective Green Materials for the Removal of Pesticides from Aqueous Medium. In: *Green Materials for Wastewater Treatment. Environmental Chemistry for A Sustainable World* (Naushad, M. & Lichtfouse, E., eds). Springer, Cham, pp. 99–130.
- Thayaparan, M. & Iqbal, S. S. 2013 Rhizofiltration of Pb by *Azolla pinnata*. *International Journal of Environmental Sciences* **3** (6), 1811–1821.
- Thijs, S., Sillen, W., Rineau, F., Weyens, N. & Vangronsveld, J. 2016 Towards an enhanced understanding of plant–Microbiome interactions to improve phytoremediation: Engineering the metaorganism. *Frontiers in Microbiology* **7**, 341.
- Ting, W. H. T., Tan, I. A. W., Salleh, S. F. & Wahab, N. A. 2018 Application of water hyacinth (*Eichhornia crassipes*) for phytoremediation of ammoniacal nitrogen: A review. *Journal of Water Process Engineering* **22**, 239–249.

- Tripathi, S., Sharma, P., Purchase, D. & Chandra, R. 2021 Distillery wastewater detoxification and management through phytoremediation employing *Ricinus communis* L. *Bioresource Technology* **333**, 1–7.
- Ullah, S., Iqbal, Z., Mahmood, S., Akhtar, K. & Ali, R. 2020 Phytoextraction potential of different grasses for the uptake of cadmium and lead from industrial wastewater. *Soil & Environment* **39** (1), 77–86.
- Ullah, S., Liu, Q., Wang, S., Jan, A. U., Sharif, H. M. A., Ditta, A., Wang, G. & Cheng, H. 2023 Sources, impacts, factors affecting Cr uptake in plants, and mechanisms behind phytoremediation of Cr-contaminated soils. *Science of The Total Environment* **899**, 165726.
- Veselý, T., Tlustoš, P. & Száková, J. 2011 The Use of water lettuce (*Pistia Stratiotes* L.) for Rhizofiltration of a highly polluted solution by cadmium and lead. *International Journal of Phytoremediation* **13** (9), 859–872.
- Wang, J., Zhang, C. B. & Jin, Z. X. 2009 The distribution and phytoavailability of heavy metal fractions in rhizosphere soils of *Paulownia fortunei* (seem) Hems near a Pb/Zn smelter in Guangdong, PR China. *Geoderma* **148** (3–4), 299–306.
- Wang, X., Shang, S., Yang, W., Clary, C. R. & Yang, D. 2010 Simulation of land use–soil interactive effects on water and sediment yields at watershed scale. *Ecological Engineering* **36** (3), 328–344.
- Weldemariam, M. M. 2013 Physico-chemical analysis of Gudbahri river water of Wukro, Eastern Tigray, Ethiopia. *International Journal of Scientific and Research Publications* **3** (11), 1–4.
- Wibowo, Y. G., Nugraha, A. T. & Rohman, A. 2023a Phytoremediation of several wastewater sources using *Pistia stratiotes* and *Eichhornia crassipes* in Indonesia. *Environmental Nanotechnology, Monitoring & Management* **20**, 100781.
- Wibowo, Y. G., Syahnur, M. T., Al-Azizah, P. S., Gintha, D. A., Lululangi, B. R. G. & Sudibyo, 2023b Phytoremediation of high concentration of ionic dyes using aquatic plant (*Lemna minor*): A potential eco-friendly solution for wastewater treatment. *Environmental Nanotechnology, Monitoring & Management* **20**, 100849.
- Williams, J. B. 2002 Phytoremediation in wetland ecosystems: Progress, problems, and potential. *Critical Reviews in Plant Sciences* **21** (6), 607–635.
- Withers, P. J. A. & Jarvie, H. P. 2008 Delivery and cycling of phosphorus in rivers: A review. *Science of The Total Environment* **400** (1–3), 379–395.
- Wong, M. H. 2003 Ecological restoration of mine degraded soils, with emphasis on metal contaminated soils. *Chemosphere* **50** (6), 775–780.
- Worrall, F. & Kolpin, D. W. 2004 Aquifer vulnerability to pesticide pollution – combining soil, land-use and aquifer properties with molecular descriptors. *Journal of Hydrology* **293** (1–4), 191–204.
- Xia, H. & Ma, X. 2006 Phytoremediation of ethion by water hyacinth (*Eichhornia crassipes*) from water. *Bioresource Technology* **97** (8), 1050–1054.
- Xiong, R., Li, Y., Gao, X., Xue, Y., Huang, J., Li, N., Chen, C. & Chen, M. 2024 Distribution and migration of heavy metals in the sediment-plant system: Case study of a large-scale constructed wetland for sewage treatment. *Journal of Environmental Management* **349**, 119428.
- Xu, Y., Wu, Y., Han, J. & Li, P. 2017 The current status of heavy metal in lake sediments from China: Pollution and ecological risk assessment. *Ecology and Evolution* **7** (14), 5454–5466.
- Yadav, R., Arora, P., Kumar, S. & Chaudhury, A. 2010 Perspectives for genetic engineering of poplars for enhanced phytoremediation abilities. *Ecotoxicology* **19** (8), 1574–1588.
- Yadav, K. K., Gupta, N., Kumar, A., Reece, L. M., Singh, N., Rezania, S. & Khan, S. A. 2018 Mechanistic understanding and holistic approach of phytoremediation: A review on application and future prospects. *Ecological Engineering* **120**, 274–298.
- Yadav, V. B., Gadi, R. & Kalra, S. 2019 Clay based nanocomposites for removal of heavy metals from water: A review. *Journal of Environmental Management* **232**, 803–817.
- Yagoubi, A., Mahjoubi, Y., Giannakis, S., Rzigui, T., Djebali, W. & Chouari, R. 2023 The silver lining of antibiotic resistance: Bacterial-mediated reduction of tetracycline plant stress via antibiopathy. *Plant Physiology and Biochemistry* **204**, 108093.
- Yan, A., Wang, Y., Tan, S. N., Yusof, M. L. M., Ghosh, S. & Chen, Z. 2020 Phytoremediation: A promising approach for revegetation of heavy metal-polluted land. *Frontiers in Plant Science* **11**, 1–15.
- Yang, M. 2011 A current global view of environmental and occupational cancers. *Journal of Environmental Science and Health, Part C* **29** (3), 223–249.
- Yang, C., Ho, Y. N., Inoue, C. & Chien, M. F. 2020 Long-term effectiveness of microbe-assisted arsenic phytoremediation by *Pteris vittata* in field trials. *Science of The Total Environment* **740**, 140137.
- Zazouli, M. A., Mahdavi, Y., Bazrafshan, E. & Balarak, D. 2014 Phytodegradation potential of bisphenolA from aqueous solution by *Azolla filiculoides*. *Journal of Environmental Health Science and Engineering* **12** (1), 1–6.
- Zhang, Y., Zhao, Y., Xu, Z., Su, H., Bian, X., Zhang, S., Dong, X., Zeng, L., Zeng, T., Feng, M., Li, L. & Sharma, V. K. 2020 Carbon quantum dots implanted CdS nanosheets: Efficient visible-light-driven photocatalytic reduction of Cr(VI) under saline conditions. *Applied Catalysis B: Environmental* **262**, 118306.
- Zhou, Y., Stepanenko, A., Kishchenko, O., Xu, J. & Borisjuk, N. 2023 Duckweeds for phytoremediation of polluted water. *Plants* **12** (3), 589.

First received 13 June 2024; accepted in revised form 24 August 2024. Available online 3 September 2024