

NETWORK NEURO SCIENCE

an open access  journal



Check for
updates

Citation: Hilger, K., & C. J. Fiebach. (2019). ADHD symptoms are associated with the modular structure of intrinsic brain networks in a representative sample of healthy adults. *Network Neuroscience*, 3(2), 567–588. https://doi.org/10.1162/netn_a_00083

DOI:
https://doi.org/10.1162/netn_a_00083

Supporting Information:
https://doi.org/10.1162/netn_a_00083

Received: 21 August 2018
Accepted: 6 March 2019

Competing Interests: The authors have declared that no competing interests exist.

Corresponding Author:
Kirsten Hilger
hilger@psych.uni-frankfurt.de



Handling Editor:
Caterina Gratton

Copyright: © 2019
Massachusetts Institute of Technology
Published under a Creative Commons
Attribution 4.0 International
(CC BY 4.0) license



RESEARCH

ADHD symptoms are associated with the modular structure of intrinsic brain networks in a representative sample of healthy adults

Kirsten Hilger ^{1,2} and Christian J. Fiebach ^{1,2,3}

¹Department of Psychology, Goethe University Frankfurt, Frankfurt am Main, Germany

²DeA Center for Individual Development and Adaptive Education, Frankfurt am Main, Germany

³Brain Imaging Center, Goethe University Frankfurt, Frankfurt am Main, Germany

Keywords: ADHD, Symptom strength, Nonclinical, Graph theory, Modularity, Brain networks

ABSTRACT

Attention-deficit/hyperactivity disorder (ADHD) is one of the most common neurodevelopmental disorders with significant and often lifelong effects on social, emotional, and cognitive functioning. Influential neurocognitive models of ADHD link behavioral symptoms to altered connections between and within functional brain networks. Here, we investigate whether network-based theories of ADHD can be generalized to understanding variations in ADHD-related behaviors within the normal (i.e., clinically unaffected) adult population. In a large and representative sample, self-rated presence of ADHD symptoms varied widely; only 8 out of 291 participants scored in the clinical range. Subject-specific brain network graphs were modeled from functional MRI resting-state data and revealed significant associations between (nonclinical) ADHD symptoms and region-specific profiles of between-module and within-module connectivity. Effects were located in brain regions associated with multiple neuronal systems including the default-mode network, the salience network, and the central executive system. Our results are consistent with network perspectives of ADHD and provide further evidence for the relevance of an appropriate information transfer between task-negative (default-mode) and task-positive brain regions. More generally, our findings support a dimensional conceptualization of ADHD and contribute to a growing understanding of cognition as an emerging property of functional brain networks.

AUTHOR SUMMARY

Neurocognitive models of ADHD link behavioral symptoms to altered connections between and within functional brain networks. We investigate whether these network-based theories of ADHD can be generalized to ADHD-related behaviors within the normal adult population. Subject-specific brain graphs were modeled from functional MRI resting-state data of a large and representative sample ($N = 291$). Significant associations between ADHD-related behaviors and region-specific profiles of between-module and within-module connectivity were observed in brain regions associated with multiple functional systems including the default-mode network, the salience network, and the central executive system. Our results support a dimensional conceptualization of ADHD and enforce network-based models of ADHD by providing further evidence for the relevance of an appropriate information transfer between task-negative (default-mode) and task-positive brain regions.

INTRODUCTION

ADHD is one of the most commonly diagnosed neurodevelopmental disorders with a world-wide prevalence of ~5.3% (Polanczyk et al., 2007). Affected patients suffer from symptoms of inattention, impulsivity, and hyperactivity. Although symptoms typically start in childhood, ~30–50% of patients are also affected during adult life (Balint et al., 2008), showing persistent problems in social functioning, lower academic success, and higher risk for psychiatric problems (Bussing et al., 2010; Fischer et al., 1990). ADHD has long been treated as a categorical concept ignoring considerable symptom variability across (Mostert et al., 2015) and within persons over time (Biederman et al., 2000). In line with a more dimensional conceptualization of ADHD (Marcus et al., 2012), recent research, however, demonstrates that even nonclinical variations in ADHD symptoms significantly impact cognitive functioning and psychological well-being (Brown & Casey, 2016; Groen et al., 2018).

Neuroimaging studies identified associations between ADHD and a wide range of variations in brain structure and function. Reductions in gray matter volume are frequent and most consistently found in prefrontal regions, basal ganglia, and cerebellum (Frodal & Skokauskas, 2012; Konrad et al., 2018). ADHD-related reductions in structural brain connections were observed in cortico-striato-thalamico-cortical loops (Cortese et al., 2013; Konrad et al., 2010), corpus callosum (Pastura et al., 2016; Van Ewijk et al., 2014), and the cerebellar peduncles (Ashtari et al., 2005; Nagel et al., 2011). Functional neuroimaging (see Cortese et al., 2012; McCarthy et al., 2014; and Norman et al., 2016, for meta-analyses) additionally indicates altered patterns of neural activation during different cognitive tasks, most prominently reduced activation in task-positive regions (executive control network, ventral attention/salience network, striatum; Seeley et al., 2007) and lower levels of task-related deactivation in task-negative regions (default-mode network; Raichle et al., 2001). Investigations of task-free (i.e., resting-state) fMRI have demonstrated disturbed functional connectivity patterns (Rubia, 2018; Konrad et al., 2018), which have been proposed as an intrinsic neural characteristic of ADHD (Castellanos & Aoki, 2016).

Current neurocognitive models of ADHD focus on altered connectivity patterns between functional brain networks: The *default-mode interference hypothesis* (Sonuga-Barke & Castellanos, 2007) postulates that ADHD-related fluctuations and variability in attention and cognition (Castellanos et al., 2005) result from an inadequate regulation of the default-mode network by task-positive networks, which according to this model increases the likelihood of spontaneous and distracting intrusions of introspective thought into ongoing cognitive processes. Empirical support comes from studies reporting increased interactions (decreased anticorrelations) between the default-mode and task-positive networks (Sun et al., 2012; Mills et al., 2018; Mowinckel et al., 2017) as well as systematic hyperactivation in default-mode regions during cognitive tasks (Cortese et al., 2012; see also the *systems-neuroscience model* of ADHD proposed by these authors). Recent studies broadened the focus toward three-network models of ADHD, proposing that stronger interactions between salience and default-mode network relative to weaker interactions between salience and central executive network reflect a deficient ability of the salience network to adaptively switch between central executive and default-mode network in response to current task demands (Choi et al., 2013).

Graph-theoretical network analysis has emerged as a valuable method for studying network properties of the human brain (Sporns, 2011a, 2011b). Brain networks can be partitioned into subnetworks (communities/modules) that share topological properties and supposedly fulfill specific cognitive or behavioral functions (Sporns & Betzel, 2016). Taking into account this modular structure of the human brain makes it possible to examine region-specific interactions

Modules:

A subnetwork/community of nodes that are densely interconnected with each other, but only sparsely connected to other network nodes.

between and within different networks in a quantifiable manner, and to test neurocognitive models of ADHD. The first graph-theoretical investigations of ADHD-related network organization (Lin et al., 2014; Barttfeld et al., 2014), however, studied modularity only at a whole-brain level, that is, as global property of the entire brain. Accordingly, this work cannot inform about altered connection patterns between or within different networks/modules as postulated by neurocognitive theories of ADHD. Here, we aim at relating graph-theoretical network analysis more directly to network models of ADHD by analyzing two local graph-theoretical measures that provide complementary information about a brain region's connections within and between different modules.

Finally, it is noteworthy that empirical support for network models of ADHD comes primarily from categorical studies of ADHD, that is, group-level comparisons between patients and controls (Sun et al., 2012; Choi et al., 2013). As outlined above, this approach ignores recent advances toward a more dimensional understanding of ADHD (Marcus et al., 2012). As of now, it accordingly remains unclear whether network models of ADHD are valid only for clinically affected persons or whether they may also inform more generally about mechanisms linking between-person variation in brain network organization to variation in cognition. To address this question, we applied graph-theoretical modularity analyses to a large and representative sample of $N = 291$ adults.

METHODS

The current study was conducted with data acquired at the Nathan S. Kline Institute for Psychiatric Research and online distributed as part of the 1000 Functional Connectomes Project INDI (NKI Rockland Sample; Nooner et al., 2012; http://fcon_1000.projects.nitrc.org/indi/enhanced/). Experimental procedures were approved by the NKI Institutional Review Board (no. 239708), and informed written consent was obtained from all participants. Note that data acquisition, preprocessing, and graph-theoretical analyses are to a large degree identical with a previous publication from our research group, which, however, focused on a different outcome measure (Hilger et al., 2017b). The code used in the current study has been deposited on GitHub at <https://github.com/KirstenHilger/ADHD-Modularity> (<https://doi.org/10.5281/zenodo.2574588>).

Participants

Three hundred and one participants with complete phenotypical and neuroimaging data were selected from the Enhanced NKI Rockland sample. Two participants were excluded because of medication with methylphenidate, which can alter neural activation related to ADHD symptoms (Shafritz et al., 2004); eight participants were excluded because of high in-scanner motion, that is, mean framewise displacement (FD) > 0.2 mm. Thus, our final sample comprises 291 participants (18–60 years, $M = 39.34$, $SD = 13.80$; 189 women; handedness: 251 right, 21 left, 19 ambidextrous). ADHD symptoms were assessed with the Conners' Adult ADHD Rating Scales (Conners et al., 1999; Self Report, Short Version/CAARS-S:S), from which four subscale scores (Inattention/Memory Problems, Hyperactivity/Restlessness, Impulsivity/Emotional Lability, and Problems with Self-Concept) as well as the total Index of ADHD symptoms were computed. The ADHD Index was used as variable of interest in all graph analyses. Potential differences in brain network organization due to different levels of intelligence (e.g., Hilger et al., 2017a; Van den Heuvel et al., 2009) were controlled by using the Full Scale Intelligence Quotient (FSIQ; Wechsler Abbreviated Scale of Intelligence, WASI, Wechsler, 1999; range 68–135, $M = 99.22$, $SD = 12.50$) as covariate of no interest.

Conners' Adult ADHD Rating Scales (CAARS-S:S):

A self-rating questionnaire accessing four dimensions of ADHD-related behaviors (Inattention/Memory Problems, Hyperactivity/Restlessness, Impulsivity/Emotional Lability, and Problems with Self-Concept).

fMRI Data Acquisition

Resting-state fMRI data were acquired on a 3Tesla whole-body MRI scanner (MAGNETOM Trio Tim, Siemens, Erlangen, Germany). A T2*-weighted BOLD-sensitive gradient-echo EPI sequence was measured with the following parameter: 38 transversal axial slices of 3-mm thickness, 120 volumes, field of view (FOV) 216 × 216 mm, repetition time (TR) 2,500 ms, echo time (TE) 30 ms, flip angle 80°, voxel size 3 × 3 × 3 mm, acquisition time 5.05 min. Furthermore, three-dimensional high-resolution anatomical scans were obtained for coregistration with a sagittal T1-weighted, Magnetization Prepared-Rapid Gradient Echo sequence (176 sagittal slices, FOV 250 × 250 mm, TR 1,900 ms, TE 2.5 ms; flip angle 9°, voxel size 1 × 1 × 1 mm, acquisition time 4.18 min).

fMRI Data Preprocessing

Preprocessing of neuroimaging data was conducted using the freely available software packages AFNI (<http://afni.nimh.nih.gov/afni>) and FSL (<http://www.fmrib.ox.ac.uk/fsl/>). The first four EPI volumes were discarded to allow for signal equilibration. Next steps comprised slice-time correction, three-dimensional motion correction, time-series despiking, and spatial smoothing (6-mm-FWHM Gaussian kernel). Four-dimensional mean-based intensity normalization was performed, and data were temporally filtered with a band-pass filter of 0.005–0.1 Hz. Linear and quadratic trends were removed, and all individual EPI volumes were normalized to the MNI152 template (3 × 3 × 3 mm resolution) by using nonlinear transformations and each individual's anatomical scan. Finally, nine nuisance signals were regressed out, that is, six motion parameters (rigid body transformation) as well as regressors for cerebrospinal fluid (intra-axial), white matter, and global mean signal that were calculated by averaging (AFNI, 3dmaskave) voxel-wise BOLD time series within subject-specific masks resulting from FSL's automatic segmentation (FAST) of the anatomical image. FD was calculated on the basis of the six motion parameters indicating translation/rotation in three directions between two consecutive volumes, $FD_i = |\Delta d_{ix}| + |\Delta d_{iy}| + |\Delta d_{iz}| + |\Delta \alpha_i| + |\Delta \beta_i| + |\Delta \gamma_i|$ (Power et al., 2012); subjects with mean $FD > 0.2$ mm were excluded ($N = 8$; see above). In-scanner motion (mean FD) was not significantly related to the variable of interest, that is, ADHD Index ($r = -0.05$, $p = 0.409$). Nevertheless, to further minimize potential remaining influences of head motion on the observed effects, we added mean FD as a control variable in all individual difference analyses. For subsequent graph analyses, data were downsampled by a factor of two, resulting in individual maps of 6 × 6 × 6 mm resolution. The preprocessing scripts used in the current study were released by the 1000 Functional Connectomes Project and are available for download at http://www.nitrc.org/projects/fcon_1000.

Intrinsic connectivity:
Task-independent correlation between nodal activation time series measured during resting state, suggested to represent innate properties of functional brain networks.

Graph-Theoretical Analyses of Intrinsic Connectivity

Individual brain graphs were constructed on the base of all 5,411 gray matter voxels in the brain, which served as nodes for the respective graphs. Network edges were modeled between nodes showing high positive correlations of BOLD signal time series. Edges between physically close nodes (< 20 mm) were excluded, as they may result from motion artifacts and spuriously high correlations induced by shared nonbiological signals (Power et al., 2011). Community detection and the subsequent graph metrics were calculated for five separate graphs defined by five proportional thresholds (representing the top 10%, 15%, 20%, 25%, and 30% of strongest edges, i.e., highest correlations), which also excluded all negative network edges (Murphy et al., 2009). The subject-specific averages of graph metrics across these five thresholds were

used in all following analyses (see also Hilger et al., 2017b). Finally, all graphs were binarized (as recommended for individual difference analyses; Van Wijk et al., 2010).

Global Modularity

To study the modular organization of intrinsic brain networks, each individual network graph was parcellated into several functionally distant communities or modules. To this end, we applied the standard Louvain algorithm (Blondel et al., 2008), which finds the optimal modular partition in an iterative procedure by maximizing the *global modularity* Q (Newman & Girvan, 2004):

$$Q = \sum_{s=1}^m \left[\frac{l_{in\ s}}{L} - \left(\frac{k_s}{2L} \right)^2 \right] \tag{1}$$

Here, m represents the number of modules, $l_{in\ s}$ is the number of edges inside module s , L reflects the total number of edges in the network, and k_s represents the total degree of the nodes in module s . Thus, the first term of Formula 1 represents the actual fraction of within-module edges relative to all edges in the network, whereas the second term represents the expected fraction of within-module edges. When the first term (actual within-module edges) is much higher than the second term (expected within-module edges), many more edges are present inside module s than expected by chance. In this case, the *global modularity* Q , which results from summing up these differences over all modules m in the network, increases. Usually, modularity values above 0.3 are taken as an indicator of a network’s modular organization (Fortunato & Barthélemy, 2007). In addition to *global modularity* Q , we calculated three further whole-brain measures of modular network organization for the final module partition of each participant, that is, *number of modules*, *average module size*, and *variability in module size*.

Node-specific modularity measures. Node-specific analyses of network modularity were conducted using *participation coefficient* p_i and *within-module degree* z_i . The *participation coefficient* p_i assesses the diversity of each node’s connections across all modules in the brain (Bertolero et al., 2017) and is defined as:

$$p_i = 1 - \sum_{m \in M} \left(\frac{k_i(m)}{k_i} \right)^2 \tag{2}$$

Here, k_i is the degree of node i and thus represents the number of edges directly attached to node i ; $k_i(m)$ refers to the subset of edges linking node i to other nodes within the same module m (Rubinov & Sporns, 2010; Guimerà & Amaral, 2005). p_i is 1 when a node is equally connected to all modules within the network, while it is 0 when all of its connections are to one single module (Bertolero et al., 2015, 2017, 2018; Sporns & Betzel, 2016). *Within-module degree* z_i , in contrast, represents within-module connectivity and is defined as:

$$z_i = \frac{k_i(m_i) - \bar{k}(m_i)}{\sigma^{k(m_i)}} \tag{3}$$

Here, m_i is the module of node i , $k_i(m_i)$ represents the number of connections within the node’s own module (i.e., the within-module degree of node i), and $\bar{k}(m_i)$ and $\sigma^{k(m_i)}$ are the mean and standard deviation of the within-module degree distribution of module m_i (Guimerà & Amaral, 2005). Nodes that are highly connected to nodes within their own module receive positive values of z_i , whereas nodes with low levels of connectivity within their own module are characterized by negative values (Sporns & Betzel, 2016). All graph-theoretical network

Modularity (Q):
A global graph-theoretical measure representing the extent to which nodes show nontrivial community organization relative to network null models.

Participation coefficient (p_i):
A node-specific graph-theoretical measure representing the diversity of a node’s connectivity to nodes in other modules.

Within-module degree z-score (z_i):
A nodal graph-theoretical measure representing the amount of interconnectedness of a given node within its own module (within-module connectivity).

analyses were conducted in python by using the open-source software *network-tools* (Ekman & Linssen, 2015).

Node-type analysis. Functional cartography (Guimerà & Amaral, 2005) relies on the above-described node-specific metrics (i.e., *participation coefficient* p_i , *within-module degree* z_i) and can be used to assign each network node into one of seven different classes, which are in turn characteristic for the node's role in within- and between-module communication (see Figure 1C). As suggested in the original work of Guimerà and Amaral (2005) and used in previous studies (Sporns et al., 2011), nodes with *within-module degree* $z_i \geq 1$ were classified as hubs (17.86% of all nodes) and nodes with $z_i < 1$ were classified as nonhubs. On the basis of the *participation coefficient* p_i , nonhubs were further classified as *ultra-peripheral* ($p_i \leq 0.05$), *peripheral* ($0.05 < p_i \leq 0.62$), *nonhub connector* ($0.62 < p_i \leq 0.80$), or *nonhub kinless nodes* ($p_i > 0.80$), whereas hubs were classified as *provincial* ($p_i \leq 0.30$), *connector* ($0.30 < p_i \leq 0.75$), or *kinless hubs* ($p_i > 0.75$).

ADHD symptoms and differences in modular network organization. The primary aim of the present study was to examine whether or not individual differences in the strength of ADHD-related behavior, in a nonclinical sample, are associated with individual differences in modular brain network organization. Therefore, partial correlations were calculated between the Conners' ADHD Index and global measures of modular brain organization, that is, *global modularity* Q , *number of modules*, *average module size*, and *variability in module size*, as well as whole-brain proportions of the seven node types. In these analyses, we controlled for effects of age, sex, handedness, FSIQ, and mean FD , and excluded outliers, that is, subjects with values $> 3 SD$ above/below the mean of the respective variable of interest. Statistical significance was accepted at $p < 0.05$, however, correcting for multiple comparisons by using Bonferroni correction, resulting in p -thresholds of .013 for global modularity measures (4 analyses) and .007 for node-type proportions (7 analyses). To quantify the evidence in favor of the null hypothesis (absence of an association) for nonsignificant correlation results, we calculated Bayes factors (BF_{01} ; Jeffreys, 1961; Wetzels & Wagenmakers, 2012) by using Bayesian linear regression and the default prior (Rouder & Morey, 2012) as implemented in JASP (Version 0.8.6; <https://jasp-stats.org>). Substantial evidence for the null was accepted at $BF_{01} > 3$ (Jeffreys, 1961).

Finally, associations between Conners' ADHD Index and node-specific (voxel-wise) measures of modular network organization (i.e., *within-module degree* z_i , *participation coefficient* p_i) were examined using regression models in the Statistic Parametric Mapping software (Wellcome Department of Imaging Neuroscience, UK), again controlling for age, sex, handedness, intelligence (FSIQ), and mean FD . The resultant p values were FWE-corrected for multiple comparisons with Monte Carlo-based cluster-level thresholding as implemented in AFNI (Forman et al., 1995), whereby an overall threshold of $p < 0.05$ was achieved by combining a voxel threshold of $p < 0.005$ with a cluster-based extent threshold of $k > 26$ voxels (3dClustSim; AFNI version August 2016; voxel size $3 \times 3 \times 3$ mm; 10,000 permutations; Ward, 2000).

RESULTS

ADHD-Related Behavior

A descriptive characterization of the distribution of self-rated ADHD symptoms as assessed with the Conners' Adult ADHD Rating Scale (CAARS) is presented in Figure 1A and B (see

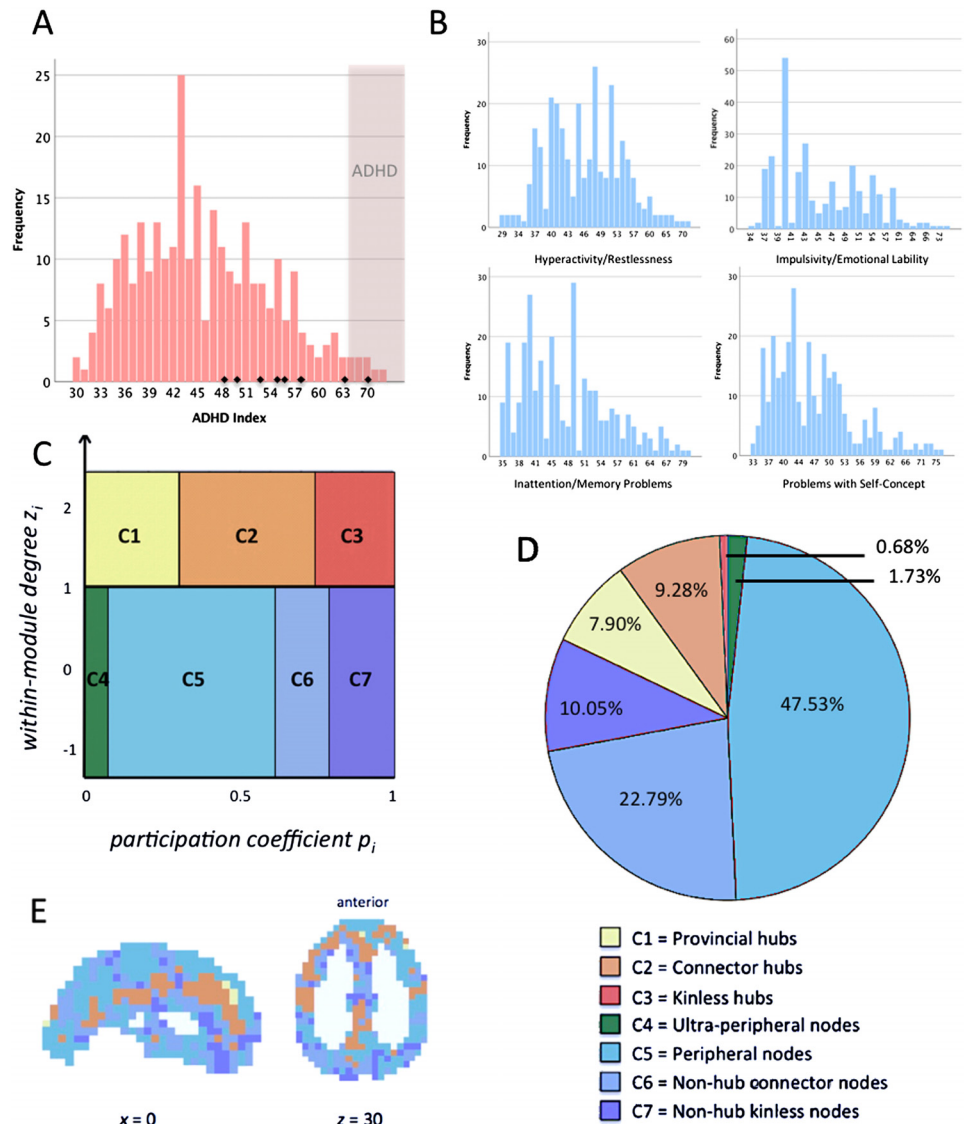


Figure 1. Frequency plots of CAARS subscales and illustration of node-type analysis. (A) Frequency histogram of Conners' ADHD Index t -scores. Values > 65 describe the 95–98th percentile, are interpreted as “much above average” and suggest the presence of ADHD (Conners et al., 1999). The respective area is depicted in light red. Subjects with clinical ADHD diagnosis are illustrated as small black diamonds in the histogram. (B) Frequency histograms of t -scores of CAARS subscales. (C) Seven node types defined as a function of their profile of between-module and within-module connectivity, that is, *participation coefficient* p_i and *within-module degree* z_i . Adapted from Guimerà and Amaral (2005); functional cartography; see Methods. (D) Proportions of node types within the whole brain and across all subjects. The proportions of node types were calculated for each subject separately and averaged across all participants afterwards. (E) Anatomical distribution of node types within the whole brain, depicted here for exemplary purposes for one subject. Hubs ($z_i > 1$) are illustrated in warm colors (yellow to red), nonhub nodes ($z_i \leq 1$) are illustrated in cool colors (green to blue). Subject-specific values of *participation coefficient* p_i and *within-module degree* z_i as well as the respective proportions of node types within the whole brain were calculated for proportionally thresholded and binarized graphs (five different cutoffs, i.e., the top 10%, 15%, 20%, 25%, or 30% of strongest edges were used to model the graph). Individual node-type proportions were calculated by averaging across the five thresholds and averaged across all subjects afterward. The x - and z -coordinates represent coordinates of the Montreal Neurological Institute template brain (MNI152).

Table 1. Descriptive statistics of the CAARS scales and global modularity measures

	<i>M</i>	<i>SD</i>	<i>Median</i>	<i>Min</i>	<i>Max</i>
ADHD symptoms					
ADHD Index	8.36	5.13	8.00	0	28
Inattention	3.82	3.83	4.00	0	13
Hyperactivity	4.42	2.65	4.00	0	12
Impulsivity	3.07	2.32	2.00	0	12
Self-concept problems	4.24	3.22	4.00	0	15
Whole-brain modularity measures					
Global modularity	0.37	0.03		0.30	0.48
Number of modules	3.54	0.33		2.80	4.80
Average module size	1,572.35	1,37.98		1,149.01	2,073.07
Variability in module size	371.04	161.55		94.49	1,105.95

Note. *M*, mean; *SD*, standard deviation; *Min*, minimum value observed across all participants; *Max*, maximum value observed across all participants. Statistics for the whole-brain modularity measures refer to subject-specific values after averaging across all graph-defining thresholds, that is, 10%, 15%, 20%, 25%, or 30%. The variables *average module size* and *variability in module size* were measures in nodes.

also Table 1). As expected for a representative adult sample, the distribution is positively (i.e., right) skewed and the majority of participants exhibited ADHD Index values clearly below the threshold for ADHD diagnosis, that is, *t*-scores < 65 (Conners et al., 1999). Nevertheless, we observed considerable variation between participants in the global ADHD Index (Figure 1A) and its four subscales, that is, inattention, impulsivity, hyperactivity, problems with self-concept (Figure 1B), suggesting that the CAARS is well suited for describing nonclinical between-person variations in ADHD-related behavior. Note that although eight participants reported a clinical diagnosis of ADHD, only one of them fulfilled the CAARS' ADHD criteria. Nevertheless, all participants with clinical diagnosis fell within the upper half of the distribution (Figure 1A).

Modular Brain Network Organization

Table 1 reports descriptive statistics for global characteristics of modular network organization, that is, *global modularity Q*, *number of modules*, *average module size*, and *variability in module size*. Mean values for *global modularity Q* were all greater than 0.3, indicating a clear modular organization in all participants (Fortunato & Barthélemy, 2007). The proportions of functionally different node types (Figure 1C and D) are likely to influence the global information flow (Van den Heuvel & Sporns, 2013), and are thus also considered as global properties of modular network organization. As we would assume for a network whose overall organization is characterized by substantial modularity and small-worldness (Gallos et al., 2012; Sporns & Betzel, 2016), only a minority of nodes were characterized as hubs (i.e., connector, provincial, or kinless hubs; in total 17.86%), and the most common node types were peripheral nodes and nonhub connector nodes. For most participants, the anatomical distribution of node types matched observations of previous studies (see, e.g., Meunier et al., 2010): For example, connector hubs were localized along the midline and on the borders between anatomically segregated cortices, whereas less important nodes were observed in more peripheral and functionally specialized regions. Figure 1E visualizes this anatomical distribution for one randomly selected participant (see also Hilger et al., 2017b).

The group-average spatial distribution of the two nodal measures, *participation coefficient* p_i and *within-module degree* z_i , matched nearly perfectly the distribution we recently published

for a slightly larger subsample from the same dataset (see Figure 1 in Hilger et al., 2017b), and is therefore not visualized again. Network nodes with high values of *participation coefficient* p_i were located in medial prefrontal (i.e., anterior and mid-cingulate) cortex, anterior insula, inferior frontal gyrus, superior temporal gyrus, medial temporal structures (amygdala, hippocampus), inferior parietal lobule, posterior cingulate cortex/precuneus, and in the thalamus. Nodes with high *within-module degree* z_i were observed in large parts of medial prefrontal cortex (again including anterior and mid-cingulate cortex), supplementary motor area, lateral superior and middle frontal gyri, anterior insula, postcentral gyrus, temporo-parietal junction, posterior cingulate cortex/precuneus, middle occipital/lingual gyrus, and in the cuneus.

LOCAL BUT NOT GLOBAL MEASURES OF MODULAR BRAIN NETWORK ORGANIZATION ARE ASSOCIATED WITH ADHD SYMPTOMS

Neither global measures of modular organization (*global modularity* Q , *number of modules*, *average module size*, and *variability in module size*) nor the whole-brain proportions of node types were significantly associated with Conners' ADHD Index (Table 2). Bayes factors exceeded 3 in only two out of 11 analyses, indicating that despite the relatively large sample of almost 300 participants, further evidence would be needed to achieve robust support against an association between ADHD symptoms and global modularity measures.

However, we observed significant associations between Conners' ADHD Index and node-specific characteristics (Table 3–5; Figure 2 and Figure 3). Thus, although individual variation in ADHD-related behaviors did not relate to global properties of modularity, there was a systematic association with the embedding of specific brain regions into the communication between and within different modules. Positive associations between ADHD Index and *participation coefficient* p_i were observed in five clusters, that is, in left and right posterior insula (extending laterally into the superior temporal gyri), anterior cingulate cortex, posterior-medial superior frontal gyrus (supplementary motor area), as well as in the left inferior parietal lobe (primarily

Table 2. ADHD symptoms and global modularity measures

	$r_{part.}$	$p_{part.}$	BF ₀₁ -Reg.
Whole-brain modularity measures			
Global modularity	0.11	0.056	0.62
Number of modules	−0.09	0.150	1.36
Average module size	0.08	0.213	1.95
Variability in module size	−0.02	0.781	3.47
Whole-brain proportions of node types			
Ultra-peripheral nodes	0.01	0.813	3.78
Peripheral nodes	0.06	0.363	2.29
Nonhub connector nodes	−0.07	0.229	2.30
Nonhub kinless nodes	−0.10	0.103	0.98
Provincial hubs	0.09	0.148	1.33
Connector hubs	−0.07	0.252	2.56
Kinless hubs	−0.07	0.255	2.58

Note. $r_{part.}$, Pearson's correlation coefficient for the partial correlation controlling for effects of age, sex, handedness, mean FD and $FSIQ$; $p_{part.}$, p value of significance for the partial correlation; BF₀₁-Reg., Bayes factor in favor of the null hypothesis (i.e., absence of correlation). Bayes factors were calculated for linear regression models predicting ADHD Index values by the respective whole-brain measure of modular network organization or whole-brain proportions of node types, respectively, whereas effects of age, sex, handedness, mean FD , and $FSIQ$ were controlled.

Table 3. ADHD symptoms and participation coefficient

Brain Region	BA	Hem	x	y	z	t_{max}	k
Positive association							
Posterior inula*	13	L	-33	-9	9	3.78	325
Posterior inula, putamen*	13	R	33	18	0	3.48	207
Anterior cingulate cortex	24	L	-6	18	24	3.26	44
Superior medial frontal gyrus*	6	L	-18	-3	69	3.27	38
Inferior parietal lobe*	40	L	-57	-36	21	4.91	250
Negative association							
Anterior cingulate cortex	32, 9	L	-9	36	30	3.27	37
Middle frontal gyrus	6	R	33	-12	45	3.22	53
Supplementary motor area	8, 6	L	-6	18	57	3.65	49
Posterior fusiform gyrus	20, 36	L	-51	-36	-27	4.08	49
Intraparietal sulcus*	40	R	33	-36	48	3.33	90
Posterior cingulate cortex		R	12	-39	9	3.71	26
Middle temporal gyrus	37, 19	R	57	-63	0	3.77	91
Inferior parietal lobe	40	R	57	-39	51	3.08	36

Note. BA, approximate Brodmann's area; Hem, hemisphere; L, left; R, right; regions with significant effects in both measures (between-module and within-module connectivity) are marked with an asterisk (*) and separately listed in Table 5; coordinates refer to the Montreal Neurological Institute template brain (MNI); t_{max} , maximum t statistic in the cluster; k , cluster size in voxels of size $3 \times 3 \times 3$ mm.

supramarginal gyrus). Negative associations were observed in eight clusters, including anterior cingulate gyrus, right lateral middle frontal gyrus, left supplementary motor area, left posterior fusiform gyrus, right intraparietal sulcus, right posterior cingulate cortex/precuneus, posterior middle temporal gyrus adjacent to the occipital cortex, and in the right inferior parietal lobe (Table 3 and Figure 2).

Concerning within-module connectivity, ADHD Index was positively associated with *within-module degree* z_i in six clusters of nodes (see Table 4 and Figure 3). Two extensive temporal clusters were observed bilaterally, comprising not only lateral temporal cortices but also the amygdalae, hippocampi, and anterior fusiform gyri. Furthermore, two large central clusters were identified that extended across central and postcentral sulci, from precentral and postcentral gyri to the supramarginal gyri and anterior parts of intraparietal sulci. Smaller clusters were observed in supplementary motor area and superior portions of left post- and precentral gyri (paracentral lobule). Negative associations between ADHD Index and *within-module degree* z_i were observed in 13 node clusters. Four of those clusters were located medially, in inferior parts of medial frontal gyrus (border to rostral anterior cingulate cortex), in superior parts of postero-medial frontal gyrus, dorsal anterior cingulate cortex, and the precuneus. More laterally located clusters comprised nearly the entire bilateral insulae and reached laterally into the inferior frontal, superior temporal, and inferior parietal lobes (supramarginal gyri), as well as medially into the putamen. Further negatively associated node clusters were observed in right middle and inferior temporal gyri, bilateral thalami, bilateral posterior fusiform gyri, left posterior cingulate cortex, and right inferior occipital cortex. In general, the spatial distribution of significantly associated network nodes showed a surprisingly high degree of interhemispheric symmetry for both measures.

In several brain regions, self-rated ADHD-related behaviors were associated with both, *participation coefficient* and *within-module degree*. These involve nine of the above-described

Table 4. ADHD symptoms and within-module degree

Brain Region	BA	Hem	x	y	z	t_{max}	k
Positive association							
Supplementary motor area	8, 6	R/L	0	30	60	3.50	49
Temporal cortex, amygdala, hippocampus, fusiform gyrus	38, 20, 28	R	27	6	-33	5.31	577
Temporal cortex, amygdala, hippocampus, fusiform gyrus	20, 38	L	-33	-21	-33	4.63	606
Precentral gyrus, postcentral gyrus, inferior parietal lobe*	3, 40	R	42	-33	51	6.28	619
Precentral gyrus, postcentral gyrus, inferior parietal lobe	3, 40	L	-45	-33	51	5.22	397
Paracentral lobule	6, 4	L	-12	-42	72	3.73	171
Negative association							
Medial frontal gyrus	11, 32, 25	R	3	30	-15	3.96	119
Anterior cingulate cortex	24	R	9	18	24	3.70	27
Insula, putamen, superior temporal gyrus, inferior frontal gyrus, inferior parietal lobule*	13, 22, 40	L	-48	9	-3	5.23	862
Insula, putamen, superior temporal gyrus, inferior frontal gyrus, inferior parietal lobule*	13, 47, 22	R	33	0	15	5.54	606
Superior medial frontal gyrus*	6, 32, 24	L	-12	-3	63	5.37	497
Midde temporal gyrus	21, 20	R	63	-6	-21	3.93	43
Thalamus		R	15	-18	9	4.02	29
Thalamus		L	-28	-24	6	3.44	30
Posterior fusiform gyrus	37, 19	L	-36	-48	-12	4.38	187
Posterior fusiform gyrus		R	36	-57	-6	3.27	33
Posterior cingulate cortex	30	L	-24	-66	21	3.70	47
Precuneus	19, 7, 31	R/L	6	-78	33	3.79	57
Inferior occipital gyrus	18	R	27	-84	-12	4.09	79

Note. BA, approximate Brodmann's area; Hem, hemisphere; L, left; R, right; regions with significant effects in both measures (between-module and within-module connectivity) are marked with an asterisk (*) and separately listed in Table 5; coordinates refer to the Montreal Neurological Institute template brain (MNI); t_{max} , maximum t statistic in the cluster; k , cluster size in voxels of size $3 \times 3 \times 3$ mm.

Table 5. ADHD symptoms and effects in both participation coefficient and within-module degree

Brain Region	BA	Hem	x	y	z	k
Positive association with p_i and negative association with z_i						
Posterior insula, superior temporal gyrus, putamen	13, 22	L	-57	0	9	237
Posterior insula, putamen	13	R	27	-15	9	137
Superior medial frontal gyrus	6	L	-21	-6	69	29
Inferior parietal lobe	40	L	-69	-39	24	67
Positive association with z_i and negative association with p_i						
Intraparietal sulcus	40	R	27	-36	45	79

Note. BA, approximate Brodmann's area; Hem, hemisphere; L, left; R, right; coordinates refer to the Montreal Neurological Institute template brain (MNI); t_{max} , maximum t statistic in the cluster; k , cluster size in voxels of size $3 \times 3 \times 3$ mm.

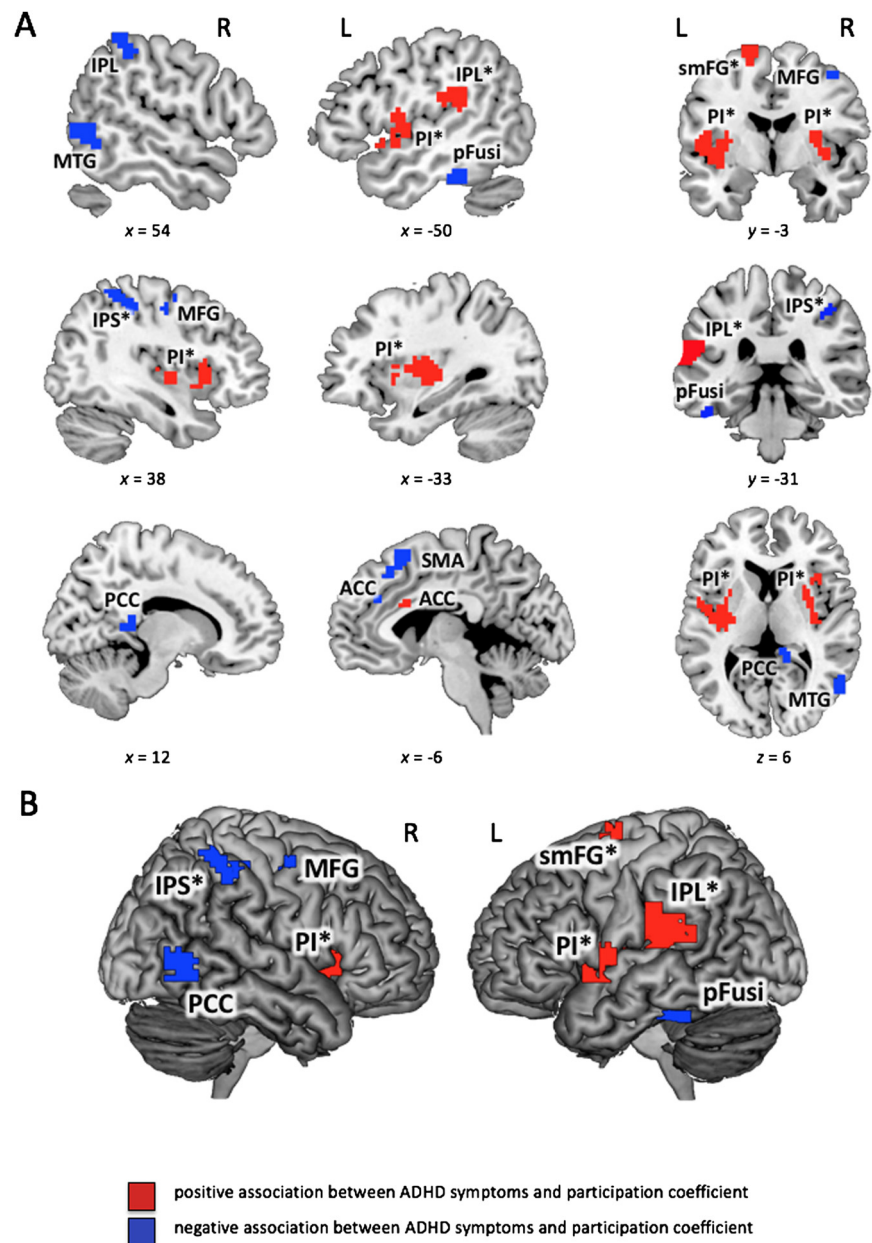


Figure 2. Significant associations between Conners' ADHD Index and participation coefficient (see also Table 3). Participation coefficient p_i (see Methods for details) was calculated for binarized and proportionally thresholded graphs using five thresholds (graphs were defined by the top 10%, 15%, 20%, 25%, or 30% of strongest edges). Input for analyses were the individual mean maps for participation coefficient p_i , which were calculated by averaging across these five thresholds for each participant separately. Statistic parametric maps of participation coefficient p_i are shown at a voxel-level threshold of $p < 0.005$ (uncorrected) combined with a cluster-level threshold of $k > 26$ voxels, corresponding to an overall family-wise error corrected threshold of $p < 0.05$ (see Methods). Clusters with effects in both (between-module and within-module connectivity, i.e., p_i and z_i) are marked with an asterisk (see also Table 5). (A) Slice view, the x -, y -, and z -coordinates represent coordinates of the Montreal Neurological Institute template brain (MNI152). (B) Render view, projection to the surface of the brain, search depth 12 voxels. PI, posterior insula; IPL, inferior parietal lobe; IPS, intraparietal sulcus; ACC, anterior cingulate cortex; MFG, middle frontal gyrus; SMA, supplementary motor area; pFusi, posterior fusiform gyrus; PCC, posterior cingulate cortex; MTG, middle temporal gyrus; smFG, superior medial frontal gyrus.

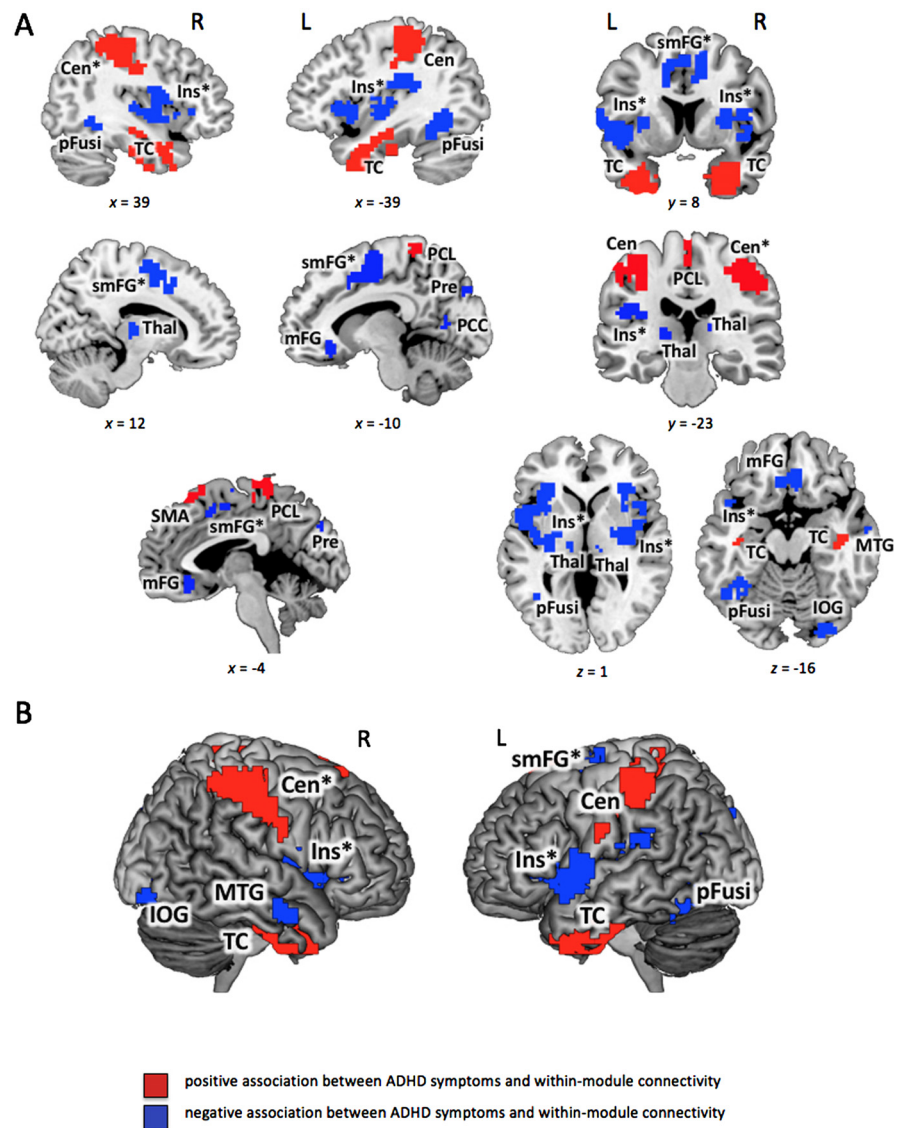


Figure 3. Significant associations between Conners' ADHD Index and within-module degree (see also Table 4). *Within-module degree* z_i (see Methods for details) was calculated for binarized and proportionally thresholded graphs using five thresholds (graphs were defined by the top 10%, 15%, 20%, 25%, or 30% of strongest edges). Input for analyses were the individual mean maps for *within-module degree* z_i , which were calculated by averaging across these five thresholds for each participant separately. Statistic parametric maps of *within-module degree* z_i are shown at a voxel-level threshold of $p < 0.005$ (uncorrected) combined with a cluster-level threshold of $k > 26$ voxels, corresponding to an overall family-wise error corrected threshold of $p < 0.05$ (see Methods). Clusters with effects in both (between-module and within-module connectivity, i.e., p_i and z_i) are marked with an asterisk (see also Table 5). (A) Slice view, the x -, y -, and z -coordinates represent coordinates of the Montreal Neurological Institute template brain (MNI152). (B) Render view, projection to the surface of the brain, search depth 12 voxels. TC, temporal cluster comprising also amygdala, hippocampus, and parts of fusiform gyrus; Cen, central cluster spreading across central and postcentral sulci from precentral gyri and postcentral gyri to the inferior parietal lobes (comprising supramarginal gyri and anterior parts of intraparietal sulci); PCL, paracentral lobule; mFG, medial frontal gyrus; Ins, insular cluster comprising also parts of putamen, superior temporal gyrus, inferior frontal gyrus and inferior parietal lobe; MTG, middle temporal gyrus; pFusi, posterior fusiform gyrus; Pre, precuneus; IOG, inferior occipital gyrus; smFG, superior medial frontal gyrus; Thal, Thalamus; SMA, supplementary motor area.

clusters (marked with an asterisk in Figures 2 and 3; cf. also Table 5). In participants with higher ADHD Index, posterior insulae, left postero-medial superior frontal gyrus, and left inferior parietal lobe showed higher *participation coefficient* along with relatively lower *within-module degree*. The opposite pattern, that is, lower *participation coefficient* and higher *within-module degree* was observed in the right intraparietal sulcus.

Similar effects were observed for the four subscales of the CAARS (see Supporting Information Tables S1 and S2 for associations with global measures; Hilger & Fiebach, 2019).

POST HOC ANALYSES

One of the few studies that so far investigated the association between ADHD and graph-theoretical brain network characteristics observed higher *global modularity* in patients with ADHD (Lin et al., 2014), which is not consistent with our results. To understand if choices of analysis strategies (here: group comparison vs. correlative approach) may have caused this difference, we compared in a post hoc analysis the 20 subjects with the highest ADHD Index with those 20 participants exhibiting the lowest score, in our sample. Also here, we found no significant differences in *global modularity Q* ($t = 1.46$; $p = 0.15$) or any of the other global measures reported above (*number of modules*: $t = 0.71$, $p = 0.48$; *average module size*: $t = 0.60$, $p = 0.54$; *variability in module size*: $t = 0.67$, $p = 0.50$).

To explore the possibility that alterations in *global modularity* may be restricted to clinically affected subjects (as observed, e.g., for autism: Rudie et al., 2013; or Alzheimer's disease: De Haan et al., 2012), we conducted a further post hoc analysis on the current data and compared *global modularity Q* values of the eight subjects with a clinical ADHD diagnosis with those of all other subjects. Also here, we did not observe a significant difference (Mann-Whitney *U*-test, one-tailed, $z = 0.62$, $p = 0.27$). However, this test relies on a comparison of 283 healthy subjects with only 8 affected patients. Thus, we finally compared also the 8 subjects with ADHD diagnosis with the 20 subjects of the first post hoc analysis (20 persons with lowest ADHD Index). Also here, there was no significant difference (Mann-Whitney *U*-test, one-tailed, $z = 0.08$, $p = 0.47$). Similar results were obtained for all other global network measures (*number of modules*: $z = 1.16$, $p = 0.12$; *average module size*: $z = 0.62$, $p = 0.27$; *variability in module size*: $z = 0.53$, $p = 0.58$).

For comparability with studies that investigated the relationship between ADHD and functional connectivity strength within or between standard (i.e., group-average) brain networks (e.g., Sidlauskaite et al., 2016), we applied a canonical 400-node parcellation (Schaefer et al., 2018) to each individual's functional MR scan and then assigned each node to one of seven well-established functional brain networks, that is, visual, somato-motor, dorsal attention, ventral attention, limbic, fronto-parietal, or default-mode network (Yeo et al., 2011). Examining the relationship of connectivity strength between/within these networks and ADHD-related behaviors, we observed no significant effects (Pearson correlation controlled for effects of age, sex, handedness, FSIQ, and mean *FD*; all $r < 0.11$, $p > 0.056$; Bonferroni corrected threshold: $p = 0.0018$; see Supporting Information Table S3; Hilger & Fiebach, 2019).

To assess the possibility that our estimates of functional connectivity (and thus also our graph-theoretical measures) may have been affected by distance-dependent motion artifacts that could remain in the data even after motion correction (Power et al., 2012; Ciric et al., 2017), we calculated for each edge the correlation between (a) the association of its functional connectivity strength with mean *FD*, and (b) the Euclidean distance between the two nodes of this respective edge (Ciric et al., 2018; note that for computational reasons this analysis is

also based on the 400-node parcellation of Schaefer et al., 2018; see also above). As illustrated in Supporting Information Figure S1 (Hilger & Fiebach, 2019), we observed no indications of distance-dependent artifacts. As further post hoc control analysis addressing potential influences of head motion, we tested whether there is a relationship between the ADHD Index and the number of low-motion frames ($FD < 0.2$ mm) in our sample. This was not the case ($r = 0.01$; $p = 0.93$). Nevertheless, we repeated all our analyses with the number of low-motion frames as covariate of no interest (rather than mean FD) and observed that the graph-theoretical results were almost unchanged, that is, only slight changes were observed in respect to p_i and z_i (see Supporting Information Tables S5–S7 and Supporting Information Figures S2 and S3; Hilger & Fiebach, 2019). Thus, these control analyses provide no evidence for influences of residual, distance-dependent motion artifacts on our results.

Last, to further characterize the functional role of the areas significantly associated with ADHD, we examined whether (a) ADHD-related brain regions have generally higher *participation coefficient* than other regions of the brain (which would make them important as intermodule connectors in the sense of, e.g., the so-called diverse club; Bertolero et al., 2017) and (b) whether ADHD-related brain regions have generally higher *within-module degree* than other regions of the brain, which would indicate a function as local hubs within their own modules. To this end, we extracted mean (group-average) values of *participation coefficient* p_i and *within-module degree* z_i from all significant clusters (Tables 3 and 4) and determined their rank position within the whole-brain (group-average) distributions. In respect to *participation coefficient*, all ADHD-associated regions scored around the center (rank positions between 20% and 80%), that is, not in the extremes of the whole-brain p_i -distribution (see Supporting Information Table S4; Hilger & Fiebach, 2019). Although most ADHD-related brain regions were also located around the center of the z_i -distribution, we observed very high z_i values (rank position $>80\%$) in middle frontal gyrus, anterior cingulate cortex, precuneus, and in both central clusters, and very low z_i values (rank position $<20\%$) in posterior cingulate cortex, left posterior fusiform gyrus, and in both temporal clusters.

DISCUSSION

The current study investigated whether ADHD-related behaviors are associated with one of the key determinants of human brain function, i.e., brain network modularity. In contrast to previous studies that relied on ADHD vs. control group comparisons, we here applied a correlative approach investigating the appearance of ADHD symptoms across a broad range of variation. These ADHD-related behaviors correlated with region-specific but not global aspects of modularity, consistent with neurocognitive models of ADHD relating intrinsic connectivity between functional brain networks to ADHD. Our results extend these models to the nonclinical range of attention and executive functions.

No Association Between ADHD Symptoms and Global Modularity

The *default-mode interference hypothesis* (Sonuga-Barke & Castellanos, 2007) postulates stronger connectivity between the default-mode network and task-positive regions, that is, a shift toward more integration and less segregation between these networks. This assumption was recently supported by two group-comparison studies that observed higher connectivity between default-mode network and task-positive regions in ADHD patients during cognitive tasks (Mills et al., 2018; Mowinckel et al., 2017). We found no direct support for this assumption in our nonclinical sample (post hoc analysis; functional connectivity between standard networks). The graph-theoretical measure of global modularity considers simultaneously

all connections within the entire network and indicates the general level of network segregation. Changes in global modularity can therefore occur in the presence of stronger or weaker connectivity between particular networks. Lin et al. (2014) reported higher global modularity of intrinsic functional brain networks in ADHD. This result, however, could not be replicated by Barttfeld et al. (2014), and further evidence from clinical ADHD samples is currently lacking. In our study focusing on behavioral variation across a broad nonclinical range, we also did not find support for an association with *global modularity*. However, despite the relatively large sample size, our data cannot be considered as strong evidence (in terms of Bayes factors) against the presence of such associations.

Although previous studies reported significant alterations in *global modularity* in patients with psychiatric conditions (Rudie et al., 2013; De Haan et al., 2012), it is still unclear whether global modularity relate to individual differences in cognitive abilities in the unimpaired brain (Stevens et al., 2012; Liang et al., 2016). We therefore speculated previously (Hilger et al., 2017b) that differences in modular network organization might become pronounced at a global level only in persons with severe neurological or psychiatric diseases. However, a post hoc analysis of the current data (albeit underpowered) suggests that the eight ADHD-diagnosed subjects in the present sample did not differ in terms of *global modularity* from subjects without diagnosis.

Region-Specific Connectivity Profiles Are Associated with ADHD Symptoms

In general, modular brain networks are organized in a way that balances functional integration and functional segregation (Gallos et al., 2012). Whereas the coordination and integration of different cognitive processes has been suggested to rely on exchange of information between different modules (high *participation coefficient*), the effectiveness of specific cognitive functions may be supported by less diverse, more focused processing of information within only one or between only few circumscribed modules (low *participation coefficient*; Bertolero et al., 2015, 2017; Gratton et al., 2012; Warren et al., 2014).

High within-module connectivity reflects that a node or brain region has strong influence on (or is highly influenced by) other nodes within the same functional module, and is therefore thought to facilitate more segregated specific cognitive functions (Warren et al., 2014; Gratton et al., 2012). In contrast, low values reflect less influence and more flexible (or independent) coupling to nodes within their modules. We observed region-specific patterns of positive and negative associations between nonclinical ADHD symptoms and within-module degree, suggesting that not only between-module interactions but also the quality of information flow within specific modules may be relevant for ADHD. Recent empirical evidence suggests further that both higher and lower levels of integration or segregation are important for cognitive performance (Cohen & D'Esposito, 2016; Hilger et al., 2017b). Our results support this and provide converging evidence from the domain of ADHD-associated behaviors. However, our outcome measure spans a wide range of behaviors and cognitive attitudes from impulsivity to self-esteem, and thus lacks the specificity needed to relate specific cognitive subfunctions to specific patterns of connectivity.

Nine mostly bilaterally located brain regions demonstrated significant effects in both *participation coefficient* and *within-module degree*. Interestingly, these associations were of opposite directions in all cases, that is, high p_i /low z_i , or vice versa. This may indicate that in persons with higher ADHD Index the connectivity profile of these regions may be biased toward one type of information flow (distributed across modules or focused within modules). ADHD-associated regions, however, do not seem to have particular node-properties (post hoc

analysis). The mechanisms linking individual variations in modular brain network organization and subclinical variations in attention and executive functioning are thus not localized to particularly integrative (members of the diverse club; Bertolero et al., 2017) or particularly locally central regions.

Partial Support for Network Models of ADHD

ADHD is a complex phenomenon, involving atypical neural activation in distributed brain regions (Cortese et al., 2012; Dickstein et al., 2006), dysfunction of specific neural networks (Sidlauskaite et al., 2016; Konrad & Eickhoff, 2010), and fundamental alterations in intrinsic connectivity (Zhang et al., 2016; Di Martino et al., 2013). To reiterate, both two- and three-network theories specifically suggest altered connectivity between the default-mode and task-positive brain networks (Sonuga-Barke & Castellanos, 2007; Cortese et al., 2012). At the most general level, our results support these network-based models by demonstrating significant and systematic relationships between functional brain network organization and variations in ADHD-related behaviors. General support for existing models also comes from our observation of localized rather than global effects, which is consistent with the focus on specific intermodule connection patterns in the current literature (Sripada et al., 2014; Choi et al., 2013). Although we did not observe associations of between-module connectivity strength with ADHD when using a standard network partition (post hoc analysis), in our main analyses (based on individual partitions) we found lower within-module connectivity in circumscribed clusters adjacent to classical default-mode networks in persons with higher ADHD Index. This is in line with previous studies with ADHD samples (e.g., Kessler et al., 2014; Castellanos et al., 2008; Sripada et al., 2014) and suggests that altered default-mode network connectivity profiles might also exist in subjects with nonclinical difficulties in attention and executive function. It is plausible to assume that this association is less pronounced within the healthy range, and the use of individualized network partitions might have helped to detect such co-variations within our nonclinical sample. Future research will be required to clarify how this alteration of within-module connectivity may relate to the diminished suppression of default-mode network activation that was suggested as cause of distracting intrusions and attentional lapses in ADHD (Sonuga-Barke & Castellanos, 2007).

Our results can also be related to recent three-network theories of ADHD, which propose stronger interactions between salience network and default-mode network, relative to weaker interactions between salience network and central executive network (Choi et al., 2013; for review see Castellanos & Aoki, 2016). As we observed significant associations in regions associated with the default-mode, salience, and central executive networks, in general our results support three-network theories. Nonetheless, both metrics studied here allow no conclusions about directionality of these connections, for example, to which brain regions the salience network is connected more strongly.

Importantly, the associations reported in the current study were observed across a broad and continuous range of nonclinical behavioral variations. They may thus represent more general mechanisms linking intrinsic network organization to variations in behaviors that in “extreme” expressions are associated with ADHD. This supports continuous conceptualizations of ADHD (Marcus et al., 2012) and suggests that ADHD is not only the extreme end in terms of behavioral variations (Levy et al., 1997) but also in terms of biological variations.

Limitations

The CAARS ADHD Index has a high validity (Kooij et al., 2008; Erhardt et al., 1999). Nevertheless, there was no perfect match between those participants with highest ADHD Index

and those reporting a clinical diagnosis. Furthermore, it has been demonstrated that different ADHD measures can lead to slightly different results (Kooij et al., 2008), so that the dependency on the predictor measure may be addressed by future research. A second limitation is the rather short duration of the resting-state scan. Although similar scan lengths are common in current functional connectivity research and although it has been shown that even less than 2 min of fMRI can be used to build robust individual connectotypes (Miranda-Dominguez et al., 2014), it has recently been demonstrated that short scan durations can lead to systematic biases in graph-theoretical measures, for example, reduced global modularity estimates (Gordon et al., 2017). Our rather large dataset may compensate for this problem to a certain degree, but future work will have to replicate the present results in datasets with longer scan durations. Finally, even though resting-state connectivity supposedly reflects fundamental organizational principles of the human brain (Biswal et al., 1995), and functional connectivity during cognitive demands may rely on these intrinsic properties (Cole et al., 2014, 2016), we consider it an important issue for future research to investigate whether the same associations persist in the presence of cognitive tasks.

Conclusion

We demonstrate that nonclinical variations in ADHD symptoms relate significantly to the modular organization of human functional brain networks. Even though ADHD-related behaviors seem to vary independent of *global modularity* differences, region-specific profiles of between-module and within-module connectivity covary with the self-rated presence of (nonclinical) ADHD symptoms. Our results support a network perspective of ADHD and suggest that intrinsic functional connections between and within neuronal systems are relevant for a comprehensive understanding of individual variations in ADHD-related cognition and behavior.

ACKNOWLEDGMENTS

The authors thank Caterina Gawrilow for valuable comments on an earlier version of this manuscript. Data were provided by the Nathan S. Kline Institute for Psychiatric Research (NKI), founded and operated by the New York State Office of Mental Health. Principal support for acquisition of the data used in this project was provided by the NIMH BRAINS R01MH094639-01 grant for the principle investigator Michael Milham. Funding for the decompression and augmentation of administrative and phenotypic protocols was provided by a grant from the Child Mind Institute (1FDN2012-1). Additional personnel support was provided by the Center for the Developing Brain at the Child Mind Institute, as well as NIMH R01MH081218, R01MH083246, and R21MH084126.

DATA AVAILABILITY STATEMENT

The data used in the present work were made available by the 1000 Functional Connectomes Project INDI and can be accessed under the following link: http://fcon_1000.projects.nitrc.org/indi/enhanced/. The code used in the current study has been deposited on GitHub at <https://github.com/KirstenHilger/ADHD-Modularity> (<https://doi.org/10.5281/zenodo.2574588>).

AUTHOR CONTRIBUTIONS

Kirsten Hilger: Conceptualization; Formal Analysis; Project Administration; Visualization; Writing - Original Draft. Christian Fiebach: Conceptualization; Supervision; Writing - Original Draft.

FUNDING INFORMATION

Christian J. Fiebach, German Research Foundation (DFG), AwardID: FI848/6-1. Michael P. Milham, Child Mind Institute, NY 10022, USA, Award ID: 1FDN2012-1, support for generating the publicly available Enhanced NKI Rockland dataset. Francisco Xavier Castellanos, National Institute of Mental Health (<http://dx.doi.org/10.13039/1000000025>), Award ID: R01MH081218, support for generating the publicly available Enhanced NKI Rockland dataset. Francisco Xavier Castellanos, National Institute of Mental Health (<http://dx.doi.org/10.13039/1000000025>), Award ID: R01MH083246, support for generating the publicly available Enhanced NKI Rockland dataset. Francisco Xavier Castellanos, National Institute of Mental Health (<http://dx.doi.org/10.13039/1000000025>), AwardID: R21MH084126, support for generating the publicly available Enhanced NKI Rockland dataset. Michael P. Milham, National Institute of Mental Health (<http://dx.doi.org/10.13039/1000000025>), Award ID: R01MH094639-01, support for generating the publicly available Enhanced NKI Rockland dataset.

REFERENCES

Ashtari, M., Kumra, S., Bhaskar, S. L., Clarke, T., Thaden, E., Cervellione, K. L., . . . Ardekani, B. A. (2005). Attention-deficit/hyperactivity disorder: A preliminary diffusion tensor imaging study. *Biological Psychiatry*, *57*(5), 448–455. <https://doi.org/10.1016/j.biopsych.2004.11.047>

Balint, S., Czobor, P., Mészáros, A., Simon, V., & Bitter, L. (2008). Neuropsychological impairments in adult attention deficit hyperactivity disorder: a literature review. *Psychiatria Hungarica*, *23*(5), 324–335.

Barttfeld, P., Petroni, A., Báez, S., Urquina, H., Sigman, M., Cetkovich, M., . . . Ibañez, A. (2014). Functional connectivity and temporal variability of brain connections in adults with attention deficit/hyperactivity disorder and bipolar disorder. *Neuropsychobiology*, *69*(2), 65–75. <https://doi.org/10.1159/000356964>

Bertolero, M. A., Yeo, B. T. T., & D’Esposito, M. (2015). The modular and integrative functional architecture of the human brain. *PNAS*, *112*(49), E6798–807. <https://doi.org/10.1073/pnas.1510619112>

Bertolero, M. A., Yeo, B. T. T., & D’Esposito, M. (2017). The diverse club. *Nature Communications*, *8*(1), 1–10. <https://doi.org/10.1038/s41467-017-01189-w>

Bertolero, M. A., Yeo, B. T. T., Bassett, D. S., & D’Esposito, M. (2018). A mechanistic model of connector hubs, modularity and cognition. *Nature Human Behaviour*, *2*, 5–7. <https://doi.org/10.1038/s41562-018-0420-6>

Biederman, J., Mick, E., & Faraone, S. V. (2000). Age-dependent decline of symptoms of attention deficit hyperactivity disorder: Impact of remission definition and symptom type. *American Journal of Psychiatry*, *157*, 816–818.

Biswal, B., Yetkin, F. Z., Haughton, V. M., & Hyde, J. S. (1995). Functional connectivity in the motor cortex of resting human brain using echo-planar MRI. *Magnetic Resonance in Medicine*, *34*(August 2015), 537–541. <https://doi.org/10.1002/mrm.1910340409>

Blondel, V. D., Guillaume, J.-L., Lambiotte, R., & Lefebvre, E. (2008). Fast unfolding of communities in large networks. *Journal of Statistical Mechanics: Theory and Experiment*, P10008. <https://doi.org/10.1088/1742-5468/2008/10/P10008>

Brown, A. J., & Casey, B. M. (2016). Subclinical ADHD-symptoms are associated with executive-functioning and externalizing problems in college students without ADHD-diagnoses. *Journal of Educational and Developmental Psychology*, *6*(1), 204–220. <http://doi.org/10.5539/jedp.v6n1p204>

Bussing, R., Mason, D. M., Bell, L., Porter, P., & Garvan, C. (2010). Adolescent outcomes of childhood attention-deficit/hyperactivity disorder in a diverse community sample. *Journal of the American Academy of Child and Adolescent Psychiatry*, *49*(6), 595–605. <https://doi.org/10.1097/00004583-201006000-00008>

Carragher, N., Krueger, R. F., Eaton, N. R., Markon, K. E., Keyes, K. M., Blanco, C., . . . Hasin, D. S. (2014). ADHD and the externalizing spectrum: Direct comparison of categorical, continuous, and hybrid models of liability in a nationally representative sample. *Social Psychiatry and Psychiatric Epidemiology*, *49*, 1307–1317. <https://dx.doi.org/10.1007/s00127-013-0770-3>

Castellanos, F. X., Sonuga-Barke, E. J. S., Scheres, A., Di Martino, A., Hyde, C., & Walters, J. R. (2005). Varieties of attention-deficit/hyper-activity disorder-related intra-individual variability. *Biological Psychiatry*, *57*, 1416–1423.

Castellanos, F. X., & Aoki, Y. (2016). Intrinsic functional connectivity in attention-deficit/hyperactivity disorder: A science in development. *Biological Psychiatry: Cognitive Neuroscience and Neuroimaging*, *1*(3), 253–261. <https://doi.org/10.1016/j.bpsc.2016.03.004>

Castellanos, F. X., Margulies, D. S., Kelly, C., Uddin, L. Q., Ghaffari, M., Kirsch, A., . . . Milham, M. P. (2008). Cingulate-precuneus interactions: A new locus of dysfunction in adult attention-deficit/hyperactivity disorder. *Biological Psychiatry*, *63*, 332–337. <https://doi.org/10.1016/j.biopsych.2007.06.025>

Choi, J., Jeong, B., Lee, S. W., & Go, H. J. (2013). Aberrant development of functional connectivity among resting state-related functional networks in medication-naïve ADHD children. *PLoS ONE*, *8*(12), e83516. <https://doi.org/10.1371/journal.pone.0083516>

Ciric, R., Wolf, D. H., Power, J. D., Roalf, D. R., Baum, G. L., Ruparel, K., . . . Bassett, D. S. (2017). Benchmarking of participant-level confound regression strategies for the

Downloaded from http://direct.mit.edu/neh/article-pdf/31/2/567/1092689/neh_a_00083.pdf by guest on 19 March 2025

- control of motion artifact in studies of functional connectivity. *NeuroImage*, 154(March), 174–187. <https://doi.org/10.1016/j.neuroimage.2017.03.020>
- Ciric, R., Rosen, A. F. G., Erus, G., Cieslak, M., Adebimpe, A., Cook, P. A., . . . Satterthwaite, T. D. (2018). Mitigating head motion artifact in functional connectivity MRI. *Nature Protocols*, 13(12), 2801–2826. <https://doi.org/10.1038/s41596-018-0065-y>
- Cohen, J. R., & D’Esposito, M. (2016). The segregation and integration of distinct brain networks and their relationship to cognition. *Journal of Neuroscience*, 36(48), 12083–12094. <https://doi.org/10.1523/JNEUROSCI.2965-15.2016>
- Cole, M. W., Bassett, D. S., Power, J. D., Braver, T. S., & Petersen, S. E. (2014). Intrinsic and task-evoked network architectures of the human brain. *Neuron*, 83(1), 238–251. <https://doi.org/10.1016/j.neuron.2014.05.014>
- Cole, M. W., Ito, T., Bassett, D. S., & Schultz, D. H. (2016). Activity flow over resting-state networks shapes cognitive task activations. *Nature Neuroscience*, 19(12), 1718–1726. <https://doi.org/10.1038/nn.4406>
- Conners, C. K., Erhardt, D., & Sparrow, E. (1999). *Conners’ Adult ADHD Rating Scales* (CAARS). North Tonawanda, NY: Multi-Health Systems, Inc.
- Cortese, S., Kelly, C., Chabernaud, C., Proal, E., Di Martino, A., Milham, M. P., & Castellanos, F. X. (2012). Toward systems neuroscience of ADHD: A meta-analysis of 55 fMRI studies. *The American Journal of Psychiatry*, 169(10), 1038–1055. <https://doi.org/10.1176/appi.ajp.2012.11101521>
- Cortese, S., Imperati, D., Zhou, J., Proal, E., Klein, R. G., Mannuzza, S., . . . Castellanos, F. X. (2013). White matter alterations at 33-year follow-up in adults with childhood attention-deficit/hyperactivity disorder. *Biological Psychiatry*, 74(8), 591–598. <https://doi.org/10.1016/j.biopsych.2013.02.025>
- Dickstein, S. G., Bannon, K., Castellanos, F. X., & Milham, M. P. (2006). The neural correlates of attention deficit hyperactivity disorder: An ALE meta-analysis. *Journal of Child Psychology and Psychiatry and Allied Disciplines*, 47(10), 1051–1062. <https://doi.org/10.1111/j.1469-7610.2006.01671.x>
- Di Martino, A., Zuo, X. N., Kelly, C., Grzadzinski, R., Mennes, M., Schvarcz, A., . . . Milham, M. P. (2013). Shared and distinct intrinsic functional network centrality in autism and attention-deficit/hyperactivity disorder. *Biological Psychiatry*, 74(8), 623–632. <https://doi.org/10.1016/j.biopsych.2013.02.011>
- De Haan, W., Van der Flier, W. M., Koene, T., Smits, L. L., Scheltens, P., & Stam, C. J. (2012). Disrupted modular brain dynamics reflect cognitive dysfunction in Alzheimer’s disease. *NeuroImage*, 59(4), 3085–3093. <https://doi.org/10.1016/j.neuroimage.2011.11.055>
- Erhardt, D., Epstein, J. N., Conners, C. K., Parker, J. D. A., & Sitarenios, G. (1999). Self-ratings of ADHD symptoms in adults II: Reliability, validity, and diagnostic sensitivity. *Journal of Attention Disorders*, 3(3), 153–158.
- Ekman, M., & Linssen, C. (2015). Network-tools: Large-scale brain network analysis in python. Available at: <https://zenodo.org/record/14803#.WtYf1o5w1JMw>
- Fischer, M., Barkley, R. A., Edelbrock, C. S., & Smallish, L. (1990). The adolescent outcome of hyperactive children diagnosed by research criteria: II. Academic, attentional, and neuropsychological status. *Journal of Consulting and Clinical Psychology*, 58, 580–588.
- Forman, S. D., Cohen, J. D., Fitzgerald, M., Eddy, W. F., Mintun, M. A., & Noll, D. C. (1995). Improved assessment of significant activation in functional magnetic resonance imaging (fMRI): Use of a cluster-size threshold. *Magnetic Resonance in Medicine*, 33(5), 636–647.
- Fortunato, S., & Barthélemy, M. (2007). Resolution limit in community detection. *PNAS*, 104(1), 36–41. <https://doi.org/10.1073/pnas.0605965104>
- Frodl, T., & Skokauskas, N. (2012). Meta-analysis of structural MRI studies in children and adults with attention deficit hyperactivity disorder indicates treatment effects. *Acta Psychiatrica Scandinavica*, 125(2), 114–126.
- Gallos, L. K., Makse, H. A., & Sigman, M. (2012). A small world of weak ties provides optimal global integration of self-similar modules in functional brain networks. *PNAS*, 109(8), 2825–2830. <https://doi.org/10.1073/pnas.1106612109>
- Gordon, E. M., Laumann, T. O., Gilmore, A. W., Newbold, D. J., Greene, D. J., Berg, J. J., . . . Dosenbach, N. U. F. (2017). Precision functional mapping of individual human brains. *Neuron*, 95(4), 791–807. <https://doi.org/10.1016/j.neuron.2017.07.011>
- Gratton, C., Nomura, E. M., Pérez, F., & D’Esposito, M. (2012). Focal brain lesions to critical locations cause widespread disruption of the modular organization of the brain. *Journal of Cognitive Neuroscience*, 24(6), 1275–1285. https://doi.org/10.1162/jocn_a_00222
- Groen, Y., den Heijer, A. E., Fuermaier, A. B. M., Althaus, M., & Tucha, O. (2018). Reduced emotional empathy in adults with subclinical ADHD: Evidence from the empathy and systemizing quotient. *ADHD Attention Deficit and Hyperactivity Disorders*, 10(2), 141–150. <https://doi.org/10.1007/s12402-017-0236-7>
- Guimerà, R., & Amaral, N. (2005). Cartography of complex metabolic networks. *Nature*, 433, 895–900. <https://doi.org/10.1088/1742-5468/2005/02/P02001>
- Hilger, K., Ekman, M., Fiebach, C. J., & Basten, U. (2017a). Efficient hubs in the intelligent brain: Nodal efficiency of hub regions in the salience network is associated with general intelligence. *Intelligence*, 60, 10–25. <https://doi.org/10.1016/j.intell.2016.11.001>
- Hilger, K., Ekman, M., Fiebach, C. J., & Basten, U. (2017b). Intelligence is associated with the modular structure of intrinsic brain networks. *Scientific Reports*, 7, 16088. <https://doi.org/10.1038/s41598-017-15795-7>
- Hilger, K., & Fiebach, C. J. (2019). Supporting information for “ADHD symptoms are associated with the modular structure of intrinsic brain networks in a representative sample of healthy adults.” *Network Neuroscience*, 3(2), 567–588. https://doi.org/10.1162/netn_a_00083
- Jeffreys. (1961). *Theory of probability*. Oxford UK: Oxford University Press.
- Kessler, D., Angstadt, M., Welsh, R. C., & Sripada, C. (2014). Modality-spanning deficits in attention-deficit/hyperactivity disorder in functional networks, gray matter, and white matter. *Journal of Neuroscience*, 34, 16555–16566.
- Konrad, K., Di Martino, A., & Aoki, Y. (2018). Brain volumes and intrinsic brain connectivity in ADHD. In Banaschewski, T., Coghill,

- C., & Zuddas, A. (Eds.), *Oxford Textbook of Attention Deficit Hyperactivity Disorder*. Oxford, UK: Oxford University Press.
- Konrad, K., & Eickhoff, S. B. (2010). Is the ADHD brain wired differently? A review on structural and functional connectivity in attention deficit hyperactivity disorder. *Human Brain Mapping, 31*(May), 904–916. <https://doi.org/10.1002/hbm.21058>
- Konrad, A., Dielentheis, T. F., El Masri, D., Bayerl, M., Fehr, C., Gesierich, T., . . . Winterer, G. (2010). Disturbed structural connectivity is related to inattention and impulsivity in adult attention deficit hyperactivity disorder. *European Journal of Neuroscience, 31*(5), 912–919. <https://doi.org/10.1111/j.1460-9568.2010.07110.x>
- Kooij, J. J. S., Boonstra, A. M., Willemsen-Swinkels, S. H. N., Bekker, E. M., Noord, I., & Buitelaar, J. K. (2008). Reliability, validity, and utility of instruments for self-report and informant report regarding symptoms of Attention-Deficit/Hyperactivity Disorder (ADHD) in adult patients. *Journal of Attention Disorders, 11*(4), 445–458.
- Levy, F., Hay, D., McStephen, M., Wood, C., & Waldman, I. (1997). Attention-deficit hyperactivity disorder: A category or a continuum? Genetic analysis of a large-scale twin study. *Journal of the American Academy of Child and Adolescent Psychiatry, 1*, 121–124. <https://dx.doi.org/10.1097/00004583-199706000-00009>
- Liang, X., Zou, Q., He, Y., & Yang, Y. (2016). Topologically reorganized connectivity architecture of default-mode, executive-control, and salience networks across working memory task loads. *Cerebral Cortex, 26*, 1501–1511. <https://doi.org/10.1093/cercor/bhu316>
- Lin, P., Sun, J., Yu, G., Wu, Y., Yang, Y., Liang, M., & Liu, X. (2014). Global and local brain network reorganization in attention-deficit/hyperactivity disorder. *Brain Imaging and Behavior, 8*(4), 558–569. <https://doi.org/10.1007/s11682-013-9279-3>
- Marcus, D. K., Norris, A. L., & Coccaro, E. F. (2012). The latent structure of attention deficit/hyperactivity disorder in an adult sample. *Journal of Psychiatric Research, 46*, 782–789. <https://dx.doi.org/10.1016/j.jpsychires.2012.03.010>
- McCarthy, H., Skokauskas, N., & Frodl, T. (2014). Identifying a consistent pattern of neural function in attention deficit hyperactivity disorder: A meta-analysis. *Psychological Medicine, 44*(4), 869–880. <https://doi.org/10.1017/S0033291713001037>
- Meunier, D., Lambiotte, R., & Bullmore, E. T. (2010). Modular and hierarchically modular organization of brain networks. *Frontiers in Neuroscience, 4*(December), 1–11. <https://doi.org/10.3389/fnins.2010.00200>
- Mills, B. D., Miranda-Dominguez, O., Mills, K., Earl, E., Cordova, M., Painter, J., . . . Fair, D. A. (2018). ADHD and attentional control: Impaired segregation of task positive and task negative brain networks. *Network Neuroscience, 2*(2), 200–217.
- Miranda-Dominguez, O., Mills, B. D., Carpenter, S. D., Grant, K. A., Kroenke, C. D., Nigg, J. T., & Fair, D. A. (2014). Connectotyping: Model based fingerprinting of the functional connectome. *PLoS ONE, 9*(11), e111048. <https://doi.org/10.1371/journal.pone.0111048>
- Mostert, J. C., Hoogman, M., Onnink, A. M. H., van Rooij, D., van Rhein, D., van Hulzen, K. J. E., . . . Franke, B. (2015). Similar subgroups based on cognitive performance parse heterogeneity in adults with ADHD and healthy controls. *Journal of Attention Disorders, 22*(3), 281–292.
- Mowinckel, A. M., Alnæs, D., Pedersen, M. L., Ziegler, S., Fredriksen, M., Kaufmann, T., . . . Biele, G. (2017). Increased default-mode variability is related to reduced task-performance and is evident in adults with ADHD. *NeuroImage: Clinical, 16*, 369–382. <https://doi.org/10.1016/j.nicl.2017.03.008>
- Murphy, K., Birn, R. M., Handwerker, D. A., Jones, T. B., & Bandettini, P. A. (2009). The impact of global signal regression on resting state correlations: Are anticorrelated networks introduced? *NeuroImage, 44*(3), 893–905. <https://dx.doi.org/10.1016/j.neuroimage.2008.09.036>
- Nagel, B. J., Bathula, D., Herting, M., Schmitt, C., Kroenke, C. D., Fair, D., & Nigg, J. T. (2011). Altered white matter microstructure in children with attention-deficit/hyperactivity disorder. *Journal of the American Academy of Child and Adolescent Psychiatry, 50*(3), 283–292. <https://doi.org/10.1016/j.jaac.2010.12.003>
- Newman, M. E. J., & Girvan, M. (2004). Finding and evaluating community structure in networks. *Physical Review E, 69*, 016113.
- Nooner, K. B., Colcombe, S. J., Tobe, R. H., Mennes, M., Benedict, M. M., Moreno, A. L., . . . Milham, M. P. (2012). The NKI-Rockland sample: A model for accelerating the pace of discovery science in psychiatry. *Frontiers in Neuroscience, 6*(October), 152. <https://doi.org/10.3389/fnins.2012.00152>
- Norman, L. J., Carlisi, C., Lukito, S., Hart, H., Mataix-Cols, D., Radua, J., & Rubia, K. (2016). Structural and functional brain abnormalities in attention-deficit/hyperactivity disorder and obsessive-compulsive disorder: A comparative meta-analysis. *JAMA Psychiatry, 73*(8), 815–825. <https://doi.org/10.1001/jamapsychiatry.2016.0700>
- Pastura, G., Doering, T., Gasparetto, E. L., Mattos, P., & Araújo, A. P. (2016). Exploratory analysis of diffusion tensor imaging in children with attention deficit hyperactivity disorder: evidence of abnormal white matter structure. *ADHD Attention Deficit and Hyperactivity Disorders, 8*(2), 65–71. <https://doi.org/10.1007/s12402-015-0185-y>
- Polanczyk, G., De Lima, M. S., Horta, B. L., Biederman, J., & Rohde, L. A. (2007). The worldwide prevalence of ADHD: A systematic review and meta-regression analysis. *American Journal of Psychiatry, 164*(6), 942–948. <https://doi.org/10.1176/appi.ajp.164.6.942>
- Power, J. D., Cohen, A. L., Nelson, S. M., Wig, G. S., Barnes, K. A., Church, J. A., . . . Petersen, S. E. (2011). Functional network organization of the human brain. *Neuron, 72*(4), 665–678. <https://dx.doi.org/10.1016/j.neuron.2011.09.006>
- Power, J. D., Barnes, K. A., Snyder, A. Z., Schlaggar, B. L., & Petersen, S. E. (2012). Spurious but systematic correlations in functional connectivity MRI networks arise from subject motion. *NeuroImage, 59*(3), 2142–2154. <https://doi.org/10.1016/j.neuroimage.2011.10.018>
- Raichle, M. E., MacLeod, a. M., Snyder, A. Z., Powers, W. J., Gusnard, D. A., & Shulman, G. L. (2001). A default mode of brain function. *PNAS, 98*(2), 676–682. <https://doi.org/10.1073/pnas.98.2.676>
- Rouder, J. N., & Morey, R. D. (2012). Default bayes factors for model selection in regression. *Multivariate Behavioral Research, 47*(6), 877–903. <https://doi.org/10.1080/00273171.2012.734737>
- Rubia, K. (2018). ADHD and brain function. In Banaschewski, T., Coghill, C., & Zuddas, A. (Eds.), *Oxford Textbook of Attention*

- Deficit Hyperactivity Disorder. Oxford, UK: Oxford University Press.
- Rubinov, M., & Sporns, O. (2010). Complex network measures of brain connectivity: uses and interpretations. *NeuroImage*, 52(3), 1059–1069. <https://doi.org/10.1016/j.neuroimage.2009.10.003>
- Rudie, J. D., Brown, J. A., Beck-Pancer, D., Hernandez, L. M., Dennis, E. L., Thompson, P. M., . . . Dapretto, M. (2013). Altered functional and structural brain network organization in autism. *NeuroImage: Clinical*, 2(1), 79–94. <https://doi.org/10.1016/j.nicl.2012.11.006>
- Schaefer, A., Kong, R., Gordon, E. M., Laumann, T. O., Zuo, X.-N., Holmes, A. J., . . . Yeo, B. T. T. (2018). Local-global parcellation of the human cerebral cortex from intrinsic functional connectivity MRI. *Cerebral Cortex*, 28(9), 3095–3114. <https://doi.org/10.1093/cercor/bhx179>
- Seeley, W. W., Menon, V., Schatzberg, A. F., Keller, J., Glover, G. H., Kenna, H., . . . Greicius, M. D. (2007). Dissociable intrinsic connectivity networks for salience processing and executive control. *The Journal of Neuroscience: The Official Journal of the Society for Neuroscience*, 27(9), 2349–56. <https://doi.org/10.1523/JNEUROSCI.5587-06.2007>
- Shafritz, K. M., Marchione, K. E., Gore, J. C., Shaywitz, S. E., & Shaywitz, B. A. (2004). The effects of methylphenidate on neural systems of attention in attention deficit hyperactivity disorder. *American Journal of Psychiatry*, 161(11), 1990–1997. <https://doi.org/10.1176/appi.ajp.161.11.1990>
- Sidlauskaite, J., Sonuga-Barke, E., Roeyers, H., & Wiersma, J. R. (2016). Altered intrinsic organization of brain networks implicated in attentional processes in adult attention-deficit/hyperactivity disorder: A resting-state study of attention, default mode and salience network connectivity. *European Archives of Psychiatry and Clinical Neuroscience*, 266(4), 349–357. <https://doi.org/10.1007/s00406-015-0630-0>
- Sonuga-Barke, E. J. S., & Castellanos, F. X. (2007). Spontaneous attentional fluctuations in impaired states and pathological conditions: A neurobiological hypothesis. *Neuroscience & Biobehavioral Reviews*, 31, 977–986. <https://doi.org/10.1016/j.neubiorev.2007.02.005>
- Sporns, O., Honey, C. J., & Kötter, R. (2011). Identification and classification of hubs in brain networks. *PLoS ONE*, 10, e1049. <https://doi.org/10.1371/journal.pone.01049>
- Sporns, O. (2011a). *Networks of the Brain*. Cambridge, MA: The MIT Press.
- Sporns, O. (2011b). The human connectome: A complex network. *Annals of the New York Academy of Sciences*, 1224, 109–125. <https://doi.org/10.1111/j.1749-6632.2010.05888.x>
- Sporns, O., & Betzel, R. F. (2016). Modular brain networks. *Annual Review of Psychology*, 67, 613–640. <https://doi.org/10.1146/annurev-psych-122414-033634>
- Sripada, C., Kessler, D., Fang, Y., Welsh, R. C., Prem Kumar, K., & Angstadt, M. (2014). Disrupted network architecture of the resting brain in attention-deficit/hyperactivity disorder. *Human Brain Mapping*, 35(9), 4693–4705. <https://doi.org/10.1002/hbm.22504>
- Stevens, A. A., Tappan, S. C., Garg, A., & Fair, D. A. (2012). Functional brain network modularity captures inter- and intra-individual variation in working memory capacity. *PLoS One*, 7(1), e30468. <https://doi.org/10.1371/journal.pone.0030468>
- Sun, L., Cao, Q., Long, X., Sui, M., Cao, X., Zhu, C., . . . Wang, Y. (2012). Abnormal functional connectivity between the anterior cingulate and the default mode network in drug-naïve boys with attention deficit hyperactivity disorder. *Psychiatry Research - Neuroimaging*, 201(2), 120–127. <https://doi.org/10.1016/j.pscychresns.2011.07.001>
- Van den Heuvel, M. P., Stam, C. J., Kahn, R. S., & Hulshoff Pol, H. E. (2009). Efficiency of functional brain networks and intellectual performance. *Journal of Neuroscience*, 29(23), 7619–7624. <https://doi.org/10.1523/JNEUROSCI.1443-09.2009>
- Van den Heuvel, M. P., & Sporns, O. (2013). Network hubs in the human brain. *Trends in Cognitive Sciences*, 17(12), 683–696. <https://dx.doi.org/10.1016/j.tics.2013.09.012>
- Van Ewijk, H., Heslenfeld, D. J., Zwiers, M. P., Faraone, S. V., Luman, M., Hartman, C. A., . . . Oosterlaan, J. (2014). Different mechanisms of white matter abnormalities in attention-deficit/hyperactivity disorder: A diffusion tensor imaging study. *Journal of the American Academy of Child and Adolescent Psychiatry*, 53(7), 790–799. <https://doi.org/10.1016/j.jaac.2014.05.001>
- Van Wijk, B. C. M., Stam, C. J., & Daffertshofer, A. (2010). Comparing brain networks of different size and connectivity density using graph theory. *PLoS ONE*, 5(10), e13701. <https://doi.org/10.1371/journal.pone.0013701>
- Ward, B. D. (2000). *Simultaneous inference for FMRI data*. Retrieved from <http://stuff.mit.edu/afs/sipb.mit.edu/project/seven/doc/AFNI/AlphaSim.ps>
- Warren, D. E., Power, J. D., Bruss, J., Denburg, N. L., Waldron, E. J., Sun, H., . . . Tranel, D. (2014). Network measures predict neuropsychological outcome after brain injury. *PNAS*, 111(39), 14247–14252. <https://doi.org/10.1073/pnas.1322173111>
- Wechsler, D. (1999). *Wechsler Abbreviated Scale of Intelligence*. San Antonio, TX: Psychological Corporation, Harcourt Brace and Company.
- Wetzels, R., & Wagenmakers, E.-J. (2012). A default Bayesian hypothesis test for correlations and partial correlations. *Psychonomic Bulletin & Review*, 19, 1057–1064. <https://doi.org/10.3758/s13423-012-0295-x>
- Yeo, B. T. T., Krienen, F. M., Sepulcre, J., Sabuncu, M. R., Lashkari, D., Hollinshead, M., . . . Buckner, R. L. (2011). The organization of the human cerebral cortex estimated by intrinsic functional connectivity. *Journal of Neurophysiology*, 106, 1125–1165. <https://doi.org/10.1152/jn.00338.2011>
- Zhang, J., Cheng, W., Liu, Z., Zhang, K., Lei, X., Yao, Y., . . . Lu, G. (2016). Neural, electrophysiological and anatomical basis of brain-network variability and its characteristic changes in mental disorders. *Brain*, 139(8), 1–15. <https://doi.org/10.1093/aww151>