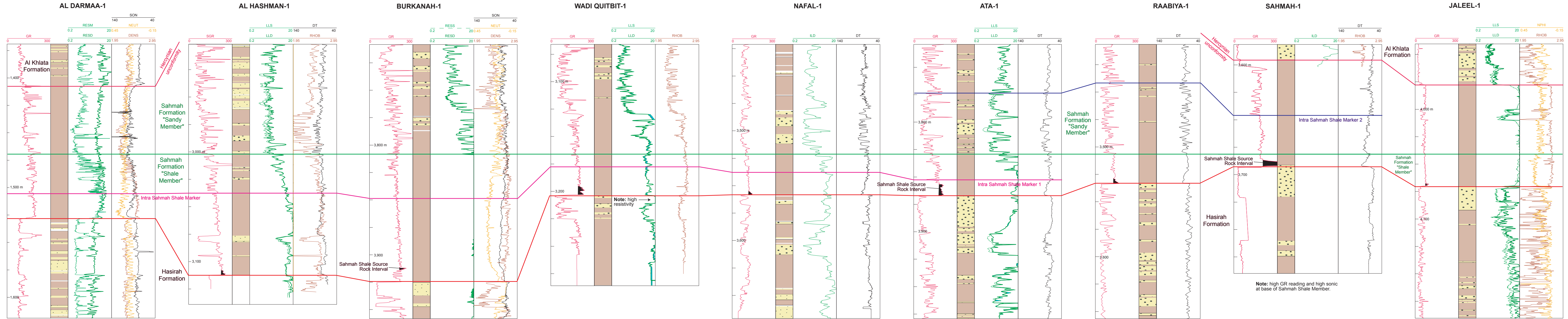


WELL LOG CORRELATION, SAHMAH SHALE MEMBER

Figure 7: Detailed correlation of the Sahmah Shale. Note the increased resistivity at the base of the shale in silt stringers in Burkanah-1. The high resistivity in the Hasirah sand in Ata-1 suggests the presence of hydrocarbon saturation. Correlation is flattened at top of the Sahmah Shale. Depth in meters below Rig Kelly Bushing (RKB).



Note: PDO considers the interval 3978 - 4072 mD in Jaleel-1 as part of the Saih Nihayda Formation without palynological support. However, the log profile suggest an alternative correlation as proposed here, hence the underlying sediments should more likely be assigned to the Hasirah Formation.