

Optimal operation of multi-reservoir systems: comparative study of three robust metaheuristic algorithms

Saeid Akbarifard, Mohammad Reza Sharifi, Kourosh Qaderi and Mohamad Reza Madadi

ABSTRACT

In this study, the capability of the recently introduced moth swarm algorithm (MSA) was compared with two robust metaheuristic algorithms: the harmony search (HS) algorithm and the imperialist competitive algorithm (ICA). First, the performance of these algorithms was assessed by seven benchmark functions having 2–30 dimensions. Next, they were compared for optimization of the complex problem of four-reservoir and 10-reservoir systems operation. Furthermore, the results of these algorithms were compared with nine other metaheuristic algorithms. Sensitivity analysis was performed to determine the appropriate values of the algorithms' parameters. The statistical indices coefficient of determination (R^2), root mean square error (RMSE), mean absolute error (MAE), mean square error (MSE), normalized MSE (NMSE), mean absolute percentage error (MAPE), and Willmott's index of agreement (d) were used to compare the algorithms' performance. The results showed that MSA was the superior algorithm for solving all benchmark functions in terms of obtaining the optimal value and saving CPU usage. ICA and HS were ranked next. When the dimensions of the problem were increased, the performance of ICA and HS dropped but MSA has still performed extremely well. In addition, the minimum CPU usage and the best solutions for the optimal operation of the four-reservoir system were obtained by MSA, with values of 269.7 seconds and 308.83, which are very close to the global optimum solution. Corresponding values for ICA were 486.73 seconds and 306.47 and for HS were 638.61 seconds and 264.61, which ranked them next. Similar results were observed for the 10-reservoir system; the CPU time and optimal value obtained by MSA were 722.5 seconds and 1,195.58 while for ICA they were 1,421.62 seconds and 1,136.22 and for HS they were 1,963.41 seconds and 1,060.76. The R^2 and RMSE values achieved by MSA were 0.951 and 0.528 for the four-reservoir system and 0.985 and 0.521 for the 10-reservoir system, which demonstrated the outstanding performance of this algorithm in the optimal operation of multi-reservoir systems. In a general comparison, it was concluded that among the 12 algorithms investigated, MSA was the best, and it is recommended as a robust and promising tool in the optimal operation of multi-reservoir systems.

Key words | evolutionary algorithms, reservoir operation, soft computing, test functions, water resources

HIGHLIGHTS

- This is the first application of robust MSA in the optimization of water resources.
- The capability of 11 metaheuristic algorithms in optimization of multi-reservoir systems was compared.
- MSA was the superior model in terms of CPU time and obtaining the optimal solution.

This is an Open Access article distributed under the terms of the Creative Commons Attribution Licence (CC BY 4.0), which permits copying, adaptation and redistribution, provided the original work is properly cited (<http://creativecommons.org/licenses/by/4.0/>).

doi: 10.2166/ws.2020.368

Saeid Akbarifard

Water Resources Engineering, Department of Hydrology and Water Resources, Faculty of Water and Environmental Engineering, Shahid Chamran University of Ahvaz, Ahvaz, Iran

Mohammad Reza Sharifi (corresponding author)

Department of Hydrology and Water Resources, Faculty of Water and Environmental Engineering, Shahid Chamran University of Ahvaz, Ahvaz, Iran
E-mail: msharifi@scu.ac.ir

Kourosh Qaderi

Department of Water Engineering, Faculty of Agriculture, Shahid Bahonar University of Kerman, Kerman, Iran

Mohamad Reza Madadi

Department of Water Engineering, University of Jiroft, Jiroft, Iran

INTRODUCTION

The optimal operation of reservoirs is one of the most important issues in water resources management, especially for multi-reservoir systems. Many control variables determine the operation strategies for scheduling a sequence of releases to meet a large number of demands for different users. Optimal reservoir operation defines the optimum policies to retain or release water from a reservoir at different periods of the year according to the inflows and demands.

To develop a comprehensive and optimal operation policy for a reservoir, the sources of uncertainties should be considered. The uncertainties may be due to different factors such as inaccurate predictive models, data scarcity, measurement and observation errors, the measurement site being unrepresentative, or problems in aggregating or disaggregating data. For a multi-reservoir system, the uncertainties may be caused by the stochastic nature of the system inputs (rainfall, reservoir inflow, evaporation, leakage, release, etc.), the nonlinearity of functions, the multiple constraints, the large number of decision variables, and other spatial and temporal variations of system components. Consideration of these uncertainties can help in the design of efficient operational policies and to develop robust predictive models.

Over the past few years, several evolutionary algorithms have been developed and applied to solving reservoir optimization problems (Table 1). They are considered to be very effective alternatives for solving complex optimization problems with either single or multiple objectives. These algorithms offer an expanded capability to systematically select the optimal solutions given the objectives and constraints (Labadie 2004). Garousi-Nejad *et al.* (2016) applied the firefly algorithm (FA) to optimal operation of reservoirs used for irrigation supply and hydropower production. The results demonstrated the superior performance of FA compared to genetic algorithms (GA) in terms of the convergence rate and obtaining optimal value. Qaderi *et al.* (2018) used a water cycle algorithm (WCA) to derive operating policy for a multi-reservoir system. They reported a high performance of WCA compared to other well-known algorithms. Ehteram *et al.* (2017) used the GA-krill hybrid for the optimization of multi-reservoir systems operation

and showed that it outperformed the traditional nonlinear programming models. Ehteram *et al.* (2018) successfully used the spider monkey algorithm (SMA) to optimize a multi-reservoir system with the aim of decreasing irrigation deficiencies. Asadieh & Afshar (2019) used the charged system search (CSS) algorithm to optimize water-supply and hydropower reservoir operation. The results demonstrated the robustness and superiority of the CSS algorithm in solving long-term reservoir operation problems, compared to alternative methods. Feng *et al.* (2019) proposed the k-means clustering method and extreme learning machine based on particle swarm optimization (PSO) for the operation rule derivation for two hydropower reservoirs in China. They reported the satisfactory performance of proposed method in real-world cases. Mohammadi *et al.* (2019) reported the high performance of the hybrid whale-genetic algorithm in the optimal operation of multi-reservoir benchmark systems. Using the long-term data of Hongjiadu reservoir in China, Niu *et al.* (2019) evaluated the capability of four methods: multiple linear regression (MLR), artificial neural network (ANN), extreme learning machine (ELM), and support vector machine (SVM) in deriving the operation rule of the hydropower reservoir. They reported that the three artificial intelligence algorithms (ANN, SVM, and ELM) showed better performances than the conventional MLR and scheduling graph method. Ehteram *et al.* (2019) proposed the crow algorithm (CA) for optimizing hydropower generation in multi-reservoir systems. They documented the high potential of the proposed CA for achieving optimal solutions to complex optimization problems associated with dam and reservoir operations. Zhou *et al.* (2019) identified efficient operating rules for hydropower reservoirs using the system dynamics approach. The Three Gorges Reservoir in central China was used as a case study. The results showed that the system dynamics simulation is an efficient way to simulate a complicated reservoir system using feedback and causal loops. Dehghani *et al.* (2019) applied the grey wolf optimization (GWO) method coupled with an adaptive neuro-fuzzy inference system (ANFIS) to forecast hydropower generation. The results indicated that the hybrid GWO-ANFIS model was

Table 1 | Literature review of the application of well-known evolutionary algorithms in the operation of reservoirs

Evolutionary algorithm	References	Problem definition	Results
Genetic algorithm (GA)	Sharif & Wardlaw (2000)	• Optimization of a multi-reservoir system in Indonesia by GA and discrete differential dynamic programming (DP)	✓ The GA results are very close to the optimum, it does not need trial state trajectories to initiate the search and it does not need discretization of state variables, in contrast to DP.
	Chang <i>et al.</i> (2005)	• Using GA to derive operating rule curves for the Shih-Men reservoir in Taiwan	✓ GA provides an effective way for searching the rule curves.
	Garousi-Nejad <i>et al.</i> (2016)	• Optimal operation of reservoirs for irrigation supply and hydropower generation using GA and FA	✓ FA is superior in terms of convergence and variance of the results.
Genetic programming (GP)	Fallah-Mehdipour <i>et al.</i> (2013a, 2013b)	• Extraction of optimal operation rules in an aquifer-dam system with developed version of GP in comparison with GA	✓ Developed GP is more flexible and effective in determining optimal rule curves for a conjunctive aquifer-dam system.
	Fallah-Mehdipour <i>et al.</i> (2012)	• Application of GP for real-time operation of reservoir	✓ The GP-based rule is effective in determining optimal rule curves.
	Ashofteh <i>et al.</i> (2015)	• Using multi-objective GP for evaluation of the climatic change impacts on multi-objective reservoir operation	✓ Reservoir-operating rules that take into account changing climate would lead to improvements in reservoir performance in the order of 29–32% relative to operating rules based on baseline climatic conditions.
	Fallah-Mehdipour <i>et al.</i> (2013a, 2013b)	• Developing operational decision rules of multi-purpose reservoirs by GP, GA and linear, integer, nonlinear, and global optimization (LINGO)	✓ The objective function value is significantly enhanced by GP. ✓ The GP-based operational rule is effective in determining optimal rule curves for reservoirs.
Ant colony optimization (ACO)	Jalali <i>et al.</i> (2006)	• Optimal operation of Dez reservoir with ACO	✓ ACO is quite sensitive to setup parameters, and provides better and more comparable results with known global optimum results.
	Kumar & Reddy (2006)	• Derivation of operating policies for the Hirakud multi-purpose reservoir system using ACO and GA	✓ ACO outperforms GA in terms of power production, irrigation demands and flood control restrictions.
	Moeini & Afshar (2013)	• Optimal operation of multi-reservoir systems by ACO and constrained ACO	✓ Constrained ACO was better than conventional ACO.
	Mohammed <i>et al.</i> (2018)	• Optimization of Darbandikhan reservoir operation using a developed version of ACO	✓ Developed ACO showed a high performance in exploring the optimum solutions for the operation of the Darbandikhan reservoir.
Particle swarm optimization (PSO)	Afshar (2013)	• Using PSOs for optimal operation of multi-reservoir systems	✓ PSOs are very effective in locating optimal solutions and very efficient in terms of the convergence rate.
	Ghimire & Reddy (2013)	• An elitist-mutated PSO (EMPSO) is applied for weekly operation policies of the Upper Seti Hydro-Power Reservoir for wet, dry and normal water years	✓ The EMPSO can generate 3% more hydropower than the planned hydropower production with a sustainability index of 0.75.
	Afshar (2012)	• Using constrained PSOs (CPSO) for optimization of large reservoir operation compared to GA and conventional PSO	✓ CPSOs were superior to conventional PSO and GA in locating near-optimal solutions and convergence characteristics. ✓ CPSOs were more insensitive to the swarm size and initial swarm.

(continued)

Table 1 | continued

Evolutionary algorithm	References	Problem definition	Results
	Al-Aqeeli & Agha (2020)	<ul style="list-style-type: none"> Optimal operation of Mosul and Badush reservoirs system for hydropower production using PSO 	✓ PSO has high performance in real-time operation of single- and multi-reservoir systems.
Harmony search (HS)	Bashiri-Atrabi <i>et al.</i> (2015)	<ul style="list-style-type: none"> Application of HS for optimization of the Narmab reservoir operation for flood management 	✓ HS has high convergence rate, it can be effectively used for operation of reservoirs for flood management.
	Kougias & Theodossiou (2013)	<ul style="list-style-type: none"> Application of HS for optimum operation of a four-reservoir system over 24 hours 	✓ HS has high potential for the optimization of multi-reservoir systems.
	Mirbeyk <i>et al.</i> (2020)	<ul style="list-style-type: none"> Using HS for optimal operation of Dez reservoir 	✓ HS has the ability to solve real large reservoir problems.
Water cycle algorithm (WCA)	Bozorg Haddad <i>et al.</i> (2015)	<ul style="list-style-type: none"> Comparison of WCA and GA for optimal operation of Karon-4 reservoir in Iran 	✓ The results demonstrate the high efficiency and reliability of WCA in solving reservoir operation problems.
	Qaderi <i>et al.</i> (2018)	<ul style="list-style-type: none"> Optimal operation of Golestan and Voshmgir consecutive dams by WCA 	✓ WCA excellently calculated the annual deficit of the Golestan–Voshmgir multi-reservoir system.
Honey-bee mating optimization (HBMO)	Bozorg Haddad <i>et al.</i> (2011)	<ul style="list-style-type: none"> HBMO was compared with linear programming (LP), DP, differential DP, discrete differential DP and GA in the optimal operation of multi-reservoir systems 	✓ The high efficiency and rapid convergence rate of HBMO compared to other algorithms make it a robust tool for the optimal operation of reservoirs.
	Soghtrati & Moeini (2020)	<ul style="list-style-type: none"> Performance of HBMO for optimization of Dez hydropower reservoir operation was compared with artificial bee colony (ABC) algorithm, GA, improved particle swarm optimization (IPSO) algorithm, ACO and GSA 	✓ Using ABC gave the best results with low computational costs.
Gravity search algorithm (GSA)	Bozorg-Haddad <i>et al.</i> (2016)	<ul style="list-style-type: none"> Application of GSA to optimization of multi-reservoir operation 	✓ GSA requires few parameters for implementation, and reaches the optimal solution in few functional evaluations.
Imperialist competitive algorithm (ICA)	Afshar <i>et al.</i> (2015)	<ul style="list-style-type: none"> Optimizing water supply and hydropower reservoir operation rule curves by ICA for Dez reservoir in Iran 	✓ ICA converged to near-optimal solutions efficiently in the case study. It performed quite well in reservoir operation optimization.
	Hosseini-Moghari <i>et al.</i> (2015)	<ul style="list-style-type: none"> Optimal operation policy of the Karun4 reservoir using ICA, GA, cuckoo optimization algorithm (COA), and nonlinear programming (NLP). 	✓ Both COA and ICA showed high performance in extraction of optimal operation policies of Karun4.
	Rahimi <i>et al.</i> (2020)	<ul style="list-style-type: none"> Optimization of hydropower energy and flood control for a real multi-objective multi-reservoir system by ICA 	✓ ICA has a fast convergence rate and a high adaptability to the problem constraints.
Spider monkey algorithm (SMA)	Ehteram <i>et al.</i> (2018)	<ul style="list-style-type: none"> Investigating the capability of SMA compared to well-known optimization algorithms in the optimization of the Golestan and Voshmgir dam operations 	✓ The SMA, with its high convergence rate, is suggested as an appropriate tool for optimizing the operation policy of cascade reservoirs.
Bat algorithm (BA)	Ahmadianfar <i>et al.</i> (2016)	<ul style="list-style-type: none"> An improved version of BA was used to optimize hydropower generation through two multi-reservoir benchmark problems 	✓ The improved BA indicated a high performance in hydropower optimization.

capable of predicting hydropower generation satisfactorily. Soghrati & Moeini (2020) proposed an improved artificial bee colony (ABC) algorithm to solve the single-reservoir operation optimization problem. They documented the capability of proposed algorithms to solve large reservoir operation optimization problems. Moeini & Babaei (2020) applied a hybrid of the constrained version of the improved particle swarm optimization (CIPSO) algorithm with a support vector machine (SVM) called the hybrid SVM-CIPSO method for the optimal operation of reservoirs for uncertain water inflow conditions. They reported the acceptable accuracy of this model in predicting the optimal water release for future conditions. Feng *et al.* (2020) proposed adaptive mutation sine cosine algorithm (ASCA) to optimize multiple hydropower reservoir operation. In this algorithm, they used the elite mutation strategy to increase individual diversity, the simplex dynamic search strategy to improve solution accuracy, and the neighborhood search strategy improve the convergence rate. The simulations of 25 test functions and a real-world hydropower system in China indicated the superiority of ASCA over several existing methods. Al-Aqeeli & Agha (2020) successfully employed PSO for the optimal operation of a multi-reservoir system (Mosul and Badush reservoirs in Iraq) for hydroelectric generation. Azizipour *et al.* (2020) employed the hybrid cellular automata-simulated annealing approach for optimal hydropower operation of multi-reservoir systems. The case study was a three-reservoir system in the USA. The results indicated that the proposed method was much more efficient than existing algorithms. Bozorg-Haddad *et al.* (2020) applied the flower pollination algorithm (FPA) to optimize single- and multi-reservoir systems. They reported the superiority of FPA over PSO and nonlinear programming method (NLP) in finding the optimal solutions.

As can be seen, several evolutionary algorithms have been developed in recent years. Because of the many advantages of these algorithms, such as rapid rate of convergence, the capability of a large number of simulations to arrive at an optimum solution, avoiding local optima, the ability for multi-objective optimization, easy handling of nonlinearity and non-convexity of the problem domain, lack of restriction by the number of dimensions and computational requirements, they have become an attractive alternative to the classical methods for the optimization of engineering problems.

The main question that this paper seeks to answer is that, among the several evolutionary algorithms that have been recently introduced by different researchers in different engineering fields, which one is the most appropriate for the optimal operation of multi-reservoir systems? Accordingly, this paper investigates the capability of the recently introduced moth swarm algorithm (MSA) for the optimal operation of four- and 10-reservoir systems in comparison to the harmony search (HS) algorithm and the imperialist competitive algorithm (ICA). To the authors' knowledge, this is the first application of MSA for the optimal operation of multi-reservoir systems. The extraordinary performance of these three algorithms, as outlined in Table 2, has made them the most successful algorithms among dozens of algorithms in solving and optimizing various complex engineering problems (Yang *et al.* 2017; Yoo *et al.* 2018; Gerist & Maheri 2019; Kim *et al.* 2019; Afsari *et al.* 2020; Khamari *et al.* 2020; Sayed *et al.* 2020). The results of these three algorithms will be also compared with nine other algorithms developed by previous researchers, including GA, honey-bee mating optimization (HBMO), gravity search algorithm (GSA), improved bat algorithm (IBA), FA, modified FA (MFA), krill, hybrid GA-krill, WCA.

MATERIALS AND METHODS

As previously stated, this study investigates the capability of three robust algorithms, MSA, HS and ICA, for the optimal operation of multi-reservoir systems. The overall methodology of this study is shown in Figure 1. More details of methodology are presented below.

Moth swarm algorithm (MSA)

MSA is a robust metaheuristic algorithm which originates from moth behaviour in nature. Moths hide from predators during the day, and at night they use celestial navigation to orient themselves in the dark and exploit food sources. In celestial navigation, the flying direction lies at a constant angle to the moonlight as a remote light source. In this algorithm, the best solution is indicated by the position of the light source, and the quality of this solution is determined by the intensity of the light source. Each moth swarm includes three groups: pathfinders, prospectors and

Table 2 | Main advantages and limitations of the MSA, ICA and HS

Algorithm	Advantages	Limitations
MSA	<ul style="list-style-type: none"> • Ease of implementation and execution • Fast convergence rate • Low computational overheads (Zhou <i>et al.</i> 2018) • Ability to avoid local optima and premature convergence • Capability of a large number of simulations to arrive at the optimum • Lack of restriction by the number of dimensions • High exploitation and exploration capabilities • Ability to solve large-scale and complex problems • Easily handling of nonlinearity and non-convexity of problem domain • Low number of parameter tuning 	<ul style="list-style-type: none"> • Reduction of population diversity over time
ICA	<ul style="list-style-type: none"> • Ease of implementation and execution • Lack of restriction by the number of dimensions • Less dependency on initial solutions 	<ul style="list-style-type: none"> • Possibility of premature convergence • Possibility of trapping in local optima in high-dimensional problems • Failure to achieve the exact optimal point
HS	<ul style="list-style-type: none"> • Ease of implementation and run • Lack of restriction by the number of dimensions • Ability to tackle several complex problems 	<ul style="list-style-type: none"> • Possibility of premature convergence • Possibility of trapping in local optima in high-dimensional problems • Failure to achieve the exact optimal point

onlookers. Pathfinders can explore the best point over the optimization space with the first-in-last-out principle to lead the movement of the main swarm. Prospectors wander into a random path close to the light sources, which have been marked by the pathfinders. Onlookers move directly toward the best global solution (moonlight), which has been obtained by prospectors.

The optimization procedure in MSA is such that, at any iteration, each moth is incorporated into the optimization problem to find the highest intensity of its corresponding light source. The best fitness in the swarm is considered as the pathfinders' positions, and guidance for the next updated iteration. Hence, the second and third best groups are the prospectors and onlookers, respectively. The optimization of the algorithm is performed through three phases of initialization, reconnaissance and transverse orientation. In initialization, at the beginning of the flight, the initial positions of moths are randomly generated. Next, the moths are grouped into the three types (pathfinders, prospectors, onlookers) based on their calculated fitness. To prevent a probable premature convergence in this phase as well as to improve the diversity of solutions, pathfinders update their positions by crossover operations and Levy mutation. During this procedure, the type of each moth changes

dynamically. For instance, if a prospector finds a solution that is brighter than the existing one, it is promoted to become a pathfinder moth. During the optimization procedures, by decreasing the number of prospectors, the number of onlookers increases, which may lead to a global solution. In this phase, MSA forces the onlookers to search more effectively (by celestial navigation) and find the optimal solution. The governing equations and mathematical explanation of MSA was provided by Mohamed *et al.* (2017). Less than 3 years after development of this algorithm, its extraordinary performance has been reported by several researchers (Zhou *et al.* 2018; Shilaja & Arunprath 2019; Duong *et al.* 2020; Kotb & El-Fergany 2020).

Harmony search (HS) algorithm

HS is an optimization algorithm inspired by the musical improvisation process in music bands. It was first introduced by Geem *et al.* (2001), and in recent years, has been widely employed as an optimization tool in various engineering problems. Harmony in music is similar to the optimization solution vector and the musicians' improvisations whereby the musicians' search for harmony is analogous to local and global search schemes in the optimization procedure.

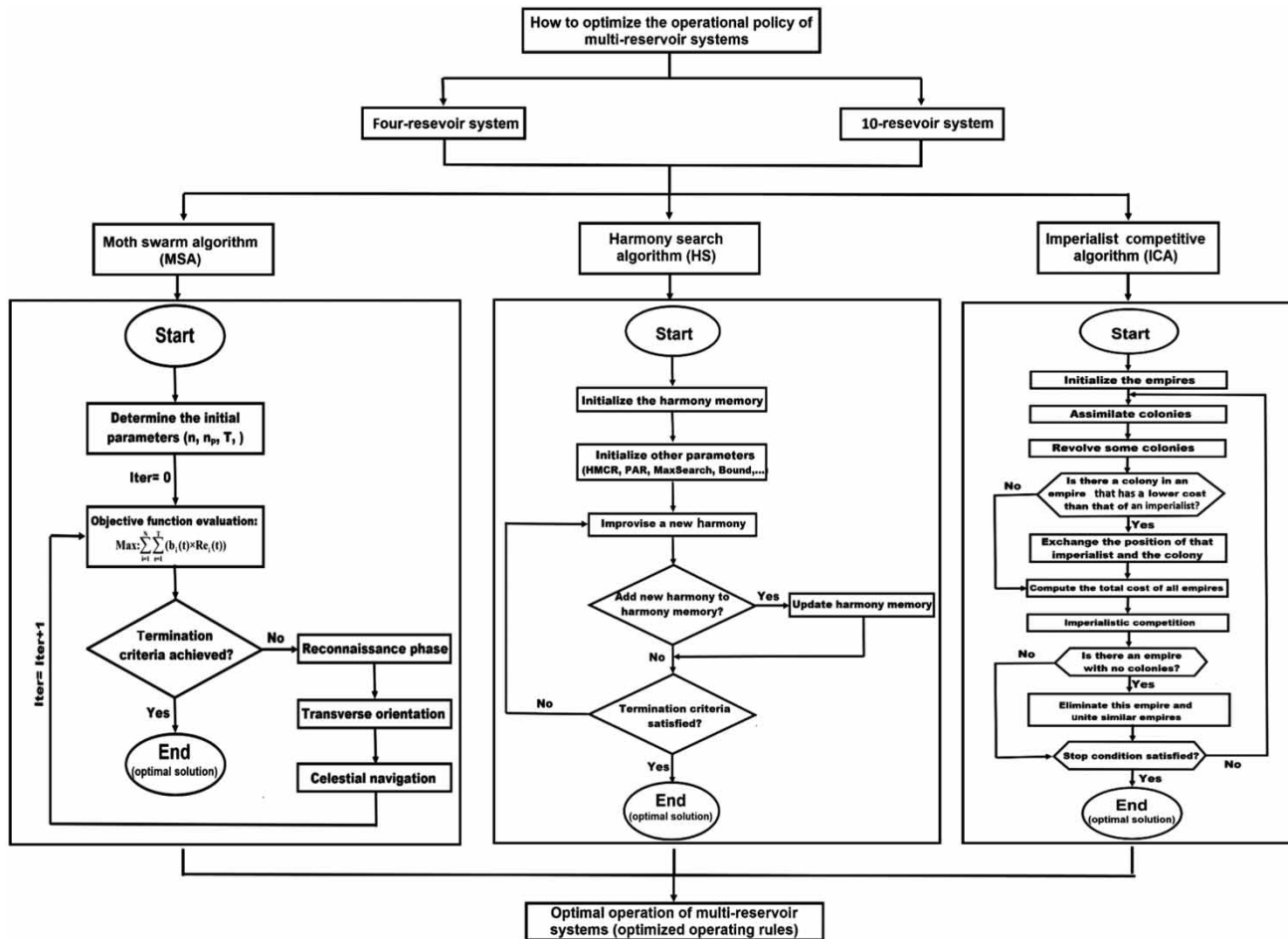


Figure 1 | Flowchart of the methodology of the study.

HS has many advantages (e.g. fewer mathematical requirements, no need for initial value setting of the decision variables, having stochastic random searches, and strong mechanism to generate new solution vectors) which made it a robust and prominent algorithm in the optimization of complex engineering problems. It has been successfully employed in the optimization of truss structural optimizations (Cheng et al. 2016; Saka et al. 2016), engineering management optimizations (Shen et al. 2017), economic load dispatch problem (Al-Betar et al. 2016); clustering applications (Abualigah et al. 2020; Talaei et al. 2020), electrical engineering (Shiva & Kumar 2020), medical sciences (Koti et al. 2020), civil and geotechnical engineering (Bekdas et al. 2020), optimal design of water distribution networks (Geem 2006; Geem & Cho 2011), optimal operation of

multi-reservoir systems (Geem 2007), simulation of irrigation systems (Cisty 2008), optimization of groundwater management (Ayvaz 2009), identification of unknown groundwater pollution sources (Ayvaz 2010) and optimal operation of reservoir system with emphasis on flood forecasting (Bashiri-Atrabi et al. 2015).

Imperialist competitive algorithm (ICA)

ICA was proposed by Atashpaz-Gargari & Lucas (2007). It is based on a global heuristic search that applies imperialism and imperialistic competition process as a source of inspiration. ICA starts with an initial population. Some of the best individuals of this population, called countries, are picked up as the imperialist states and all the rest become

the colonies of these imperialists. Due to the imperialists' powers, which are inversely proportional to their cost, the colonies of the initial population are divided among them. Having distributed the colonies between the imperialists and established the initial empires, these colonies commence proceeding toward their relevant imperialist country. After the successful application of ICA in different engineering optimizations, it has been approved by several researchers as one of the most powerful optimization algorithms (Abd-Elazim & Ali 2016; Al Dossary & Nasrabadi 2016; Fathy & Rezk 2017; Mikaeil et al. 2018; Emami & Parsa 2020; Lei et al. 2020).

All the algorithms were coded in MATLAB 2016a using a PC with i7 CPU 1.8 GHz/16GB RAM/2TB HDD.

Verification of the algorithms

In order to evaluate the efficiency and validation of the developed models for the optimal operation of multi-reservoir systems, a set of standard benchmark functions was selected, as presented in Table 3.

The performance of MSA in solving these functions was compared with HS and ICA. The population size and the number of evaluations of benchmark functions in all the algorithms was identical and proportional to the dimensions of each function. As seen in Table 3, for benchmark functions with lower dimensions, the performance of all the algorithms was approximately similar, but for large dimension problems (Rosenbrock function with dimension of 10 and 30), MSA was the only algorithm which was capable of solving the problem. The performance of the other

algorithms was so weak, the results of them dramatically diverged from the optimal value. Figure 2 shows the convergence rate of the algorithms in reaching the optimal value for standard benchmark functions. It indicates that for all benchmark functions, MSA reached its optimal value by the smallest number of iterations. The difference was more obvious in high dimension problems.

After successful verification of utilized algorithms by benchmark functions, their performance was investigated in the optimization of two multi-reservoir systems.

Sensitivity analysis of model parameters

Before using the algorithms to optimize the multi-reservoir system operation, a sensitivity analysis was performed to determine the best values for the algorithm parameters. The tuning parameters include number of iterations, number of variables, number of search agents and number of pathfinders (for MSA), number of iterations, number of variables, harmony memory size, harmony memory considering rate and pitch-adjusting rate (for HS), and number of iterations, number of variables, number of countries, revolution rate and assimilation coefficient (for ICA). The sensitivity of each model to all corresponding parameters was investigated and the best values for model parameters were identified by sensitivity analysis.

Test cases: optimization of multi-reservoir systems

The four-reservoir problem was first formulated and solved by Larson (1968) as a linear problem with a known global

Table 3 | Performance of MSA, HS and ICA for solving benchmark functions

Benchmark function	Dimensions	Global optimum	MSA		HS		ICA	
			Optimal value	CPU time (s)	Optimal value	CPU time (s)	Optimal value	CPU time (s)
Goldsten-Price	2	3	3	5.51	3	9.23	3	5.13
McCormick	2	-1.9132	-1.9132	4.97	-1.9132	8.36	-1.9132	6.92
Rosenbrock	2	0	0	5.53	1.8×10^{-6}	12.68	2.7×10^{-15}	7.14
Rosenbrock	10	0	0	5.92	1.43	16.46	0.055	10.24
Rosenbrock	30	0	2.66×10^{-6}	6.06	63.03	21.24	2.11	11.34
Shekel	4	-10.5364	-10.5321	5.53	-6.4619	11.62	-10.532	8.21
Six-hump camel	2	-1.0316	-1.0316	4.94	-1.0316	9.91	-1.0316	5.13

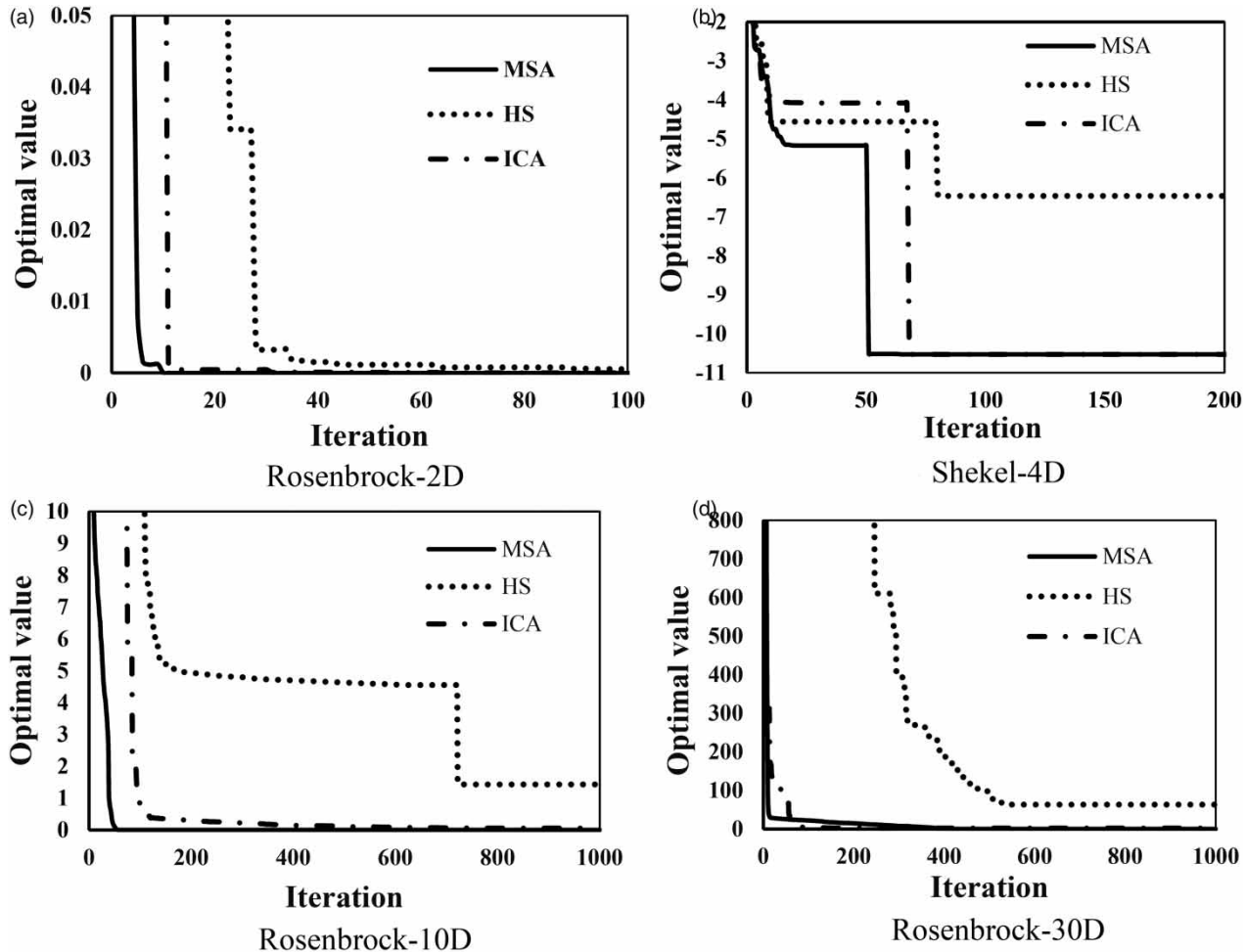


Figure 2 | Convergence of MSA, HS and ICA in standard benchmark functions. (a) Rosenbrock-2D, (b) Shekel-4D, (c) Rosenbrock-10D, (d) Rosenbrock-30D.

optimum. This case was later used by a number of researchers for the assessment of different optimization algorithms (Wardlaw & Sharif 1999; Hosseini-Moghari *et al.* 2015; Ehteram *et al.* 2017). The four-reservoir system, as illustrated in Figure 3(a), consists of both series and parallel connections. The supplies from the system are used for hydropower generation and irrigation. Hydropower generation is possible from each reservoir. The outflow from reservoir four may be diverted for irrigation. Hydropower and irrigation benefits are quantified by linear functions of discharge. There are inflows to the first and second reservoirs only, and these are 2 and 3 units, respectively, in all time periods. The initial storage in all reservoirs is 5 units.

The 10-reservoir problem is more complicated, not only in terms of size, but also because of the many

time-dependent constraints on storage. The layout of the 10-reservoir problem is shown in Figure 3(b). The system comprises reservoirs in series and in parallel, and a reservoir may receive supplies from one or more upstream reservoirs. Inflows are defined for each of the upstream reservoirs, and initial storage and target storage at the end of the operating period are specified for each reservoir. In addition, there are minimum operating storage amounts in each reservoir that must be satisfied, as well as constraints on minimum and maximum reservoir releases. Operation of the system is optimized over 12 operating periods to maximize hydropower production. More details of these problems can be found in Murray & Yakowitz (1979).

The objective function is the maximization of benefits from the systems over 12 two-hour operating periods,

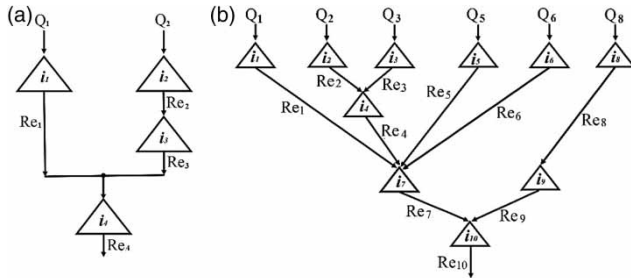


Figure 3 | Schematic representation of (a) the four-reservoir system and (b) the 10-reservoir system.

defined as follows:

$$\text{Max } F = \sum_{k=1}^K \sum_{t=1}^{NT} b_k(t) \times R_k(t) + \sum_{t=1}^{NT} b_{k+1}(t) \times R_k(t) \quad (1)$$

where K is the number of reservoir; NT = total number of periods; $R_k(t)$ = releases in time period t from reservoir k ($k = 1, \dots, K$); and $b_k(t)$ is the benefit functions for the k_{th} reservoir. The function F , which should be maximized, is the sum of the returns due to power generated by the power plants and the return from the diversion of the irrigation project.

The fundamental constraints include the continuity constraints for each reservoir over each operating period t , defined as:

$$S_k(t + 1) = S_k(t) + I_k(t) - R_k(t) \quad k = 1, 2, \dots, K \quad (2)$$

Constraints on reservoir storage:

$$S_k^{\min}(t) \leq S_k(t) \leq S_k^{\max}(t) \quad k = 1, 2, \dots, K \quad (3)$$

And constraints on releases from the reservoirs:

$$R_k^{\min}(t) \leq R_k(t) \leq R_k^{\max}(t) \quad k = 1, 2, \dots, K \quad (4)$$

Here $S_k(t)$ = storage at time t in reservoir k ($k = 1, \dots, K$); $I_k(t)$ = inflows in time period t to reservoir k ; $S_k^{\min}(t)$ = minimum storage in reservoir k ; $S_k^{\max}(t)$ = maximum storage in reservoir k ; $R_k^{\min}(t)$ = minimum release from reservoir k ; $R_k^{\max}(t)$ = maximum release from reservoir k .

Evaluation criteria

In order to evaluate the employed algorithms, the statistical indices of coefficient of determination (R^2), root mean square error (RMSE), mean absolute error (MAE), mean square error (MSE), normalized MSE (NMSE), mean absolute percentage error (MAPE), and Willmott's index of agreement (d) were used as per Equations (5)–(11) (Willmott 1981).

$$R^2 = \left[\frac{\sum (\text{Re}_{opt}t - \overline{\text{Re}_{opt}})(\text{Re}_t - \overline{\text{Re}})}{\sqrt{\sum (\text{Re}_{opt}t - \overline{\text{Re}_{opt}})^2 \times \sum (\text{Re}_t - \overline{\text{Re}})^2}} \right]^2 \quad (5)$$

$$\text{RMSE} = \sqrt{\frac{1}{n} \sum_{t=1}^n (\text{Re}_{opt}t - \text{Re}_t)^2} \quad (6)$$

$$\text{MAE} = \frac{1}{n} \sum_{t=1}^n |\text{Re}_{opt}t - \text{Re}_t| \quad (7)$$

$$\text{MSE} = \frac{\sum_{t=1}^n (\text{Re}_{opt}t - \text{Re}_t)^2}{n} \quad (8)$$

$$\text{NMSE} = \frac{\sum_{t=1}^n (\text{Re}_{opt}t - \text{Re}_t)^2}{\sum_{t=1}^n (\text{Re}_{opt}t - \overline{\text{Re}})^2} \quad (9)$$

$$\text{MAPE} = \frac{100}{n} \times \sum_{t=1}^n \left| \frac{\text{Re}_{opt}t - \text{Re}_t}{\text{Re}_{opt}t} \right| \quad (10)$$

$$d = 1 - \frac{\sum_{t=1}^n (\text{Re}_{opt}t - \text{Re}_t)^2}{\sum_{t=1}^n (|\text{Re}_t - \overline{\text{Re}}| + |\text{Re}_{opt}t - \overline{\text{Re}_{opt}}|)^2} \quad (11)$$

In the above equations, Re_t is the releases in time period t from the investigated algorithms, $\text{Re}_{opt}t$ is the optimum release in time period t , $\overline{\text{Re}_{opt}}$ is the mean of the optimum release, $\overline{\text{Re}}$ is the mean of the release, and n is the number of total time periods. The variation domain of Willmott's index of agreement ranges from $-\infty$ to 1, so that 1 indicates perfect agreement between the optimum release and releases from the investigated algorithms.

A low value of RMSE and a high value of R^2 indicate acceptable accuracy of the algorithm and correlation between the data, and also imply its superiority over the other algorithms. Each of the MAE, MSE, NMSE, and

MAPE parameters shows the difference between the optimum release and releases from the investigated algorithms; the lower the values of these parameters, the more efficient the algorithm. MSE highlights the difference between the data, and its normalized form (NMSE) can be compared with other algorithms.

RESULTS AND DISCUSSION

Results of sensitivity analysis

As previously described, to ensure the reliability and validity of the models' outputs, MSA, HS and ICA were put through 10 runs with different iterations. To achieve the appropriate number of iterations, a sensitivity analysis on the number of iterations was performed. Accordingly, each algorithm was run with 500, 1,000, 2,000 and 5,000 iterations. Table 4 shows the values of objective function for different numbers of iterations in the four-reservoir system.

Only MSA could reach the values very close to the optimal value after 1,000 iterations. Although the two other algorithms converged after 1,000 iterations, they have a large difference from the optimal value. For iterations over 1,000, while the execution time of the algorithms dramatically increased, the variations of the objective function were negligible. Therefore, the number of iterations in each algorithm was considered to be 1,000. The results of sensitivity analysis for the four-reservoir system are shown in Figures S1–S4 in the Supplementary Information. In addition, Figure 4 shows the variations of objective function by increasing the number of iterations. Similar results were obtained for the 10-reservoir system. Table 5 shows the

Table 4 | The objective function values for different numbers of iterations in the four-reservoir system

Iteration	Algorithm		
	MSA	HS	ICA
500	307.5855	244.4548	281.3062
1,000	308.25	258.842	296.363
2,000	308.094	259.1158	298.869
5,000	308.731	261.4383	299.71

final values of algorithm parameters for multi-reservoir systems, all of which were derived by sensitivity analysis.

Convergence rate and models performance

Figure 5 shows the convergence rate of applied algorithms to reach the optimum value in the operation of four- and 10-reservoir systems. It indicates the rapid convergence of MSA compared to HS and ICA. The results in Figure 5 are consistent with those in Figure 2, in which MSA is the best and HS is the worst algorithm for solving the large-scale problems. It can be seen from these from the figures that MSA reaches the optimum value in fewer iterations, but HS has premature convergence. Premature convergence means the solution is stuck within the local optimum.

Tables 6 and 7 show the values of objective function and the average CPU run time of each algorithm for 10 runs of the algorithms for the four-reservoir and 10-reservoir systems, respectively. It was found that MSA was able to produce the best solutions for both the four- and 10-reservoir systems. The results of 10 different runs of MSA generated an optimum solution close to 100% of the global optimum for both multi-reservoir systems. As can be seen in Table 6, the value of the objective function achieved by MSA was 16.03% and 3.86% better than that of HS and ICA, respectively. The calculation time was 638 seconds for HS, 486 seconds for ICA, and 269 seconds for MSA, indicating the outstanding speed of MSA execution. Thus, MSA ranks best in terms of the objective function production and saving calculation time. Also, according to Table 7, the

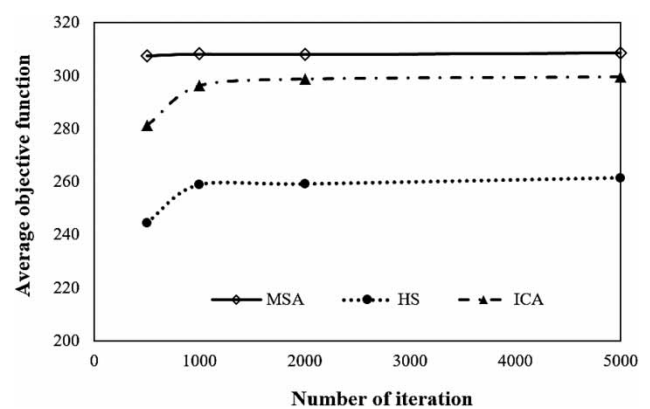
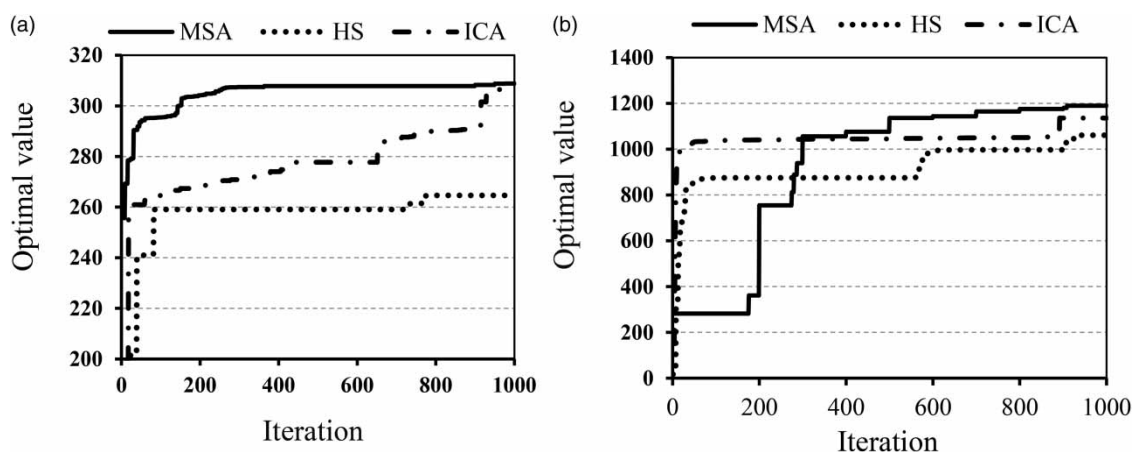


Figure 4 | Variations of objective function vs the number of iterations for optimization of the four-reservoir system.

Table 5 | Values of MSA, HA and ICA parameters for multi-reservoir systems

	Parameter	Number of iterations	Number of variables	Number of search agents	Number of pathfinders	-
MSA	Value	1,000	48-120	100	20	-
	Parameter	Number of iterations	Number of variables	Harmony memory size	Harmony memory considering rate	Pitch-adjusting rate
HS	Value	1,000	48-120	100	0.95	0.3
	Parameter	Number of iterations	Number of variables	Number of countries	Revolution rate	Assimilation coefficient
ICA	Value	1,000	48-120	100	0.4	0.5

**Figure 5** | Convergence rate of applied algorithms in (a) the four-reservoir system and (b) the 10-reservoir system.

value of the objective function for the 10-reservoir system achieved by MSA was 12.5% and 6.6% better than that of HS and ICA, respectively. The calculation time of the 10-reservoir system optimization by MSA, HS and ICA were 722 seconds, 1,963 seconds, and 1,421 seconds, respectively, indicating the superior performance of MSA.

As previously described, for a better comparison of the three utilized algorithms in the optimal operation of multi-reservoir systems, seven statistical indices were employed. According to Table 8, the maximum values of the accuracy parameters R^2 and d were obtained by MSA, with values of 0.9511 and 0.9874 for the four-reservoir system and 0.9852 and 0.9963 for the 10-reservoir system. The accuracy indices dropped significantly in HS and ICA for both multi-reservoir systems. In the same way, while the minimum values of error parameters were achieved by MSA in both the four-reservoir (RMSE = 0.5275, MAE = 0.1951,

MSE = 0.3506, NMSE = 0.04993 and MAPE = 490.1845) and the 10-reservoir (RMSE = 0.5211, MAE = 0.1357, MSE = 0.4254, NMSE = 0.0150 and MAPE = 282.0782) systems, the corresponding values for HS and ICA were not satisfactory.

Figure 6(a) and 6(b) show the water release patterns for the operation of four- and 10-reservoir systems using MSA, HS and ICA. As can be seen, the operating policies obtained using MSA gave the maximum benefits with a more appropriate release pattern, so that the system does not face shortages. Regarding the higher capability of MSA in calculating near-optimal global solutions, it can be employed by water policymakers as a guide (rule curve) to schedule water releases from multi-reservoir systems in a way that gives the most benefits. It can be seen from Figure 6 that HS and ICA failed to produce reasonable results for multi-reservoir systems.

Table 6 | Results of 10 runs of the four-reservoir system

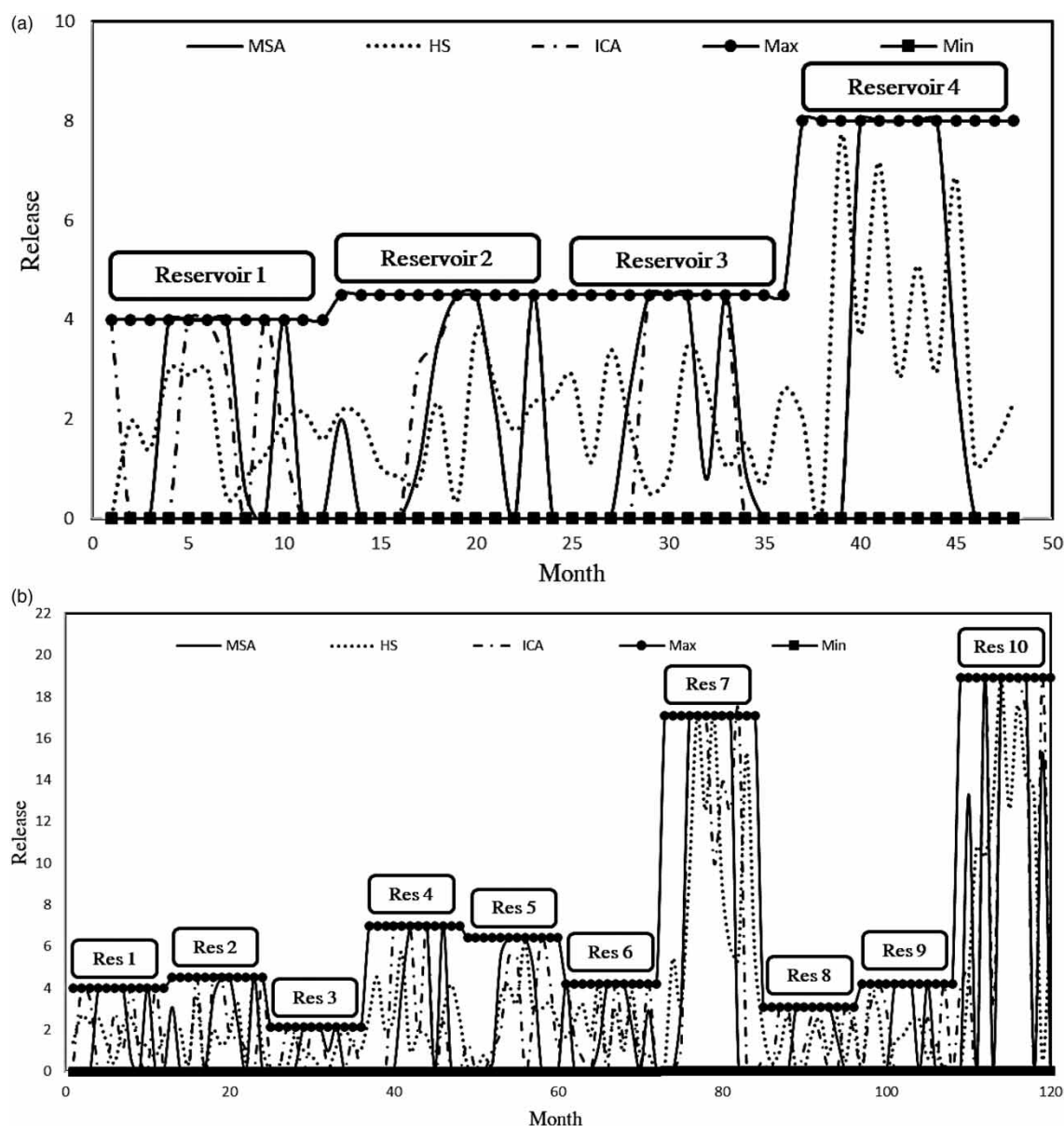
Number of runs	MSA		HS		ICA	
	Optimal value	CPU time (s)	Optimal value	CPU time (s)	Optimal value	CPU time (s)
1	308.83	376.12	246.36	678.67	304.14	524.12
2	308.52	337.13	256.74	751.64	292.67	498.26
3	308.64	447.01	261.01	716.23	295.12	543.56
4	307.52	447.90	261.41	649.32	293.99	551.72
5	307.70	383.85	252.74	675.92	292.06	486.73
6	308.47	308.41	264.61	706.64	306.47	601.24
7	308.43	269.71	258.51	668.65	296.53	524.93
8	307.41	313.91	262.84	645.34	294.58	512.65
9	308.83	318.64	260.35	638.61	293.8	503.15
10	308.14	318.54	263.85	706.54	294.27	561.23
Best	308.83		264.61		306.47	
Worst	307.41		246.36		292.06	
Average	308.25		258.842		296.363	
SD	0.53		5.631914614		4.900340238	
Coefficient of variation	0.0017		0.021758117		0.016534926	
Best CPU time (s)	269.71		638.61		486.73	

Table 7 | Results of the 10 runs of the 10-reservoir systems

Number of runs	MSA		HS		ICA	
	Optimal value	CPU time (s)	Optimal value	CPU time (s)	Optimal value	CPU time (s)
1	1,195.13	827.51	1,024.86	2,132.64	1,125.12	1,532.74
2	1,195.56	812.12	1,034.24	2,036.45	1,091.23	1,462.15
3	1,194.12	723.34	1,060.76	1,963.41	1,103.41	1,421.62
4	1,192.10	722.55	1,035.67	2,009.35	1,109.37	1,574.62
5	1,193.36	914.79	1,060.41	2,103.62	1,110.65	1,596.38
6	1,192.77	983.29	1,048.24	1,992.72	1,136.22	1,496.21
7	1,194.93	851.16	1,053.09	2,012.04	1,113.84	1,466.56
8	1,195.58	826.97	1,040.36	2,031.26	1,107.39	1,514.81
9	1,192.78	751.16	1,032.84	1,984.32	1,132.72	1,441.26
10	1,195.56	739.63	1,054.78	2,101.36	1,121.63	1,526.31
Best	1,195.58		1,060.76		1,136.22	
Worst	1,192.10		1,024.86		1,091.23	
Average	1,194.19		1,044.525		1,115.158	
Standard deviation	1.34		12.61843823		13.82279341	
Coefficient of variation	0.0011		0.012080552		0.012395368	
Best CPU time (s)	722.55		1,963.41		1,421.62	

Table 8 | Comparison of MSA, HS and ICA for optimization of multi-reservoir systems

Case study	Algorithm	Performance metrics						
		R^2	RMSE	MAE	d	MSE	NMSE	MAPE
Four-reservoir system	MSA	0.9511	0.5275	0.1951	0.9874	0.3506	0.04993	490.1845
	HS	0.5475	1.7826	1.3346	0.8442	3.1776	0.4525	9,489.9
	ICA	0.8108	1.1838	0.5288	0.9493	1.4015	0.1996	6,259.4729
10-reservoir system	MSA	0.9852	0.5211	0.1357	0.9963	0.4254	0.0150	282.0782
	HS	0.4151	4.1406	2.7930	0.7933	17.1447	0.6043	17,878
	ICA	0.6824	3.0784	1.9390	0.9087	9.4765	0.334	12,073

**Figure 6** | Water release patterns of MSA, HS and ICA for (a) the four-reservoir system and (b) the 10-reservoir system.

Comparison with previous research

Table 9 compares the results of this study with those of previous studies on the optimization of four- and 10-reservoir system operation. It can be seen that MSA has the highest performance among all evolutionary algorithms. For the four-reservoir system, MSA gave the optimal value of 308.83, the closest to the global optimum. After that, GSA (Bozorg-Haddad *et al.* 2016), with the optimal value of 308.30, demonstrated better performance than the other algorithms. Next were MFA (Garousi-Nejad *et al.* 2016), hybrid GA-krill (Ehteram *et al.* 2017), IBA (Ahmadianfar *et al.* 2016), HBMO (Bozorg-Haddad *et al.* 2011), krill (Ehteram *et al.* 2017), ICA (present study), WCA (Eskandar *et al.* 2012; Bozorg-Haddad *et al.* 2015; Qader *et al.* 2018), FA (Garousi-Nejad *et al.* 2016), and HS (present study) with the optimum values of 308.21, 308.17, 308.05, 307.50, 307.26, 306.47, 306.39, 305.51 and 264.61, respectively. This confirms the superiority of MSA to the 11 other metaheuristic algorithms in the optimal operation of the four-reservoir system.

For the case of the 10-reservoir system, it was also observed that MSA was the most robust model. It achieved the optimal value of 1,195.58, close to 100% of the global

optimum. After MSA, the GA-krill hybrid (Ehteram *et al.* 2017) solved the problem with the highest percentage of the objective function relative to the global optimal solution. The order of next algorithms in terms of achieving the best solutions IBA, GA, krill, MFA, WCA, HBMO, ICA, FA, and HS, respectively. Comparison of the results indicates the extraordinary capability of MSA in the optimization of a complex 10-reservoir system. It could efficiently reach the absolute global optimum in both multi-reservoir systems.

CONCLUSION

In this study, the capability of the recently introduced MSA for solving benchmark functions as well as the optimal operation of multi-reservoir systems was compared with two robust algorithms: ICA and HS. The results from MSA, HS and ICA were compared with those of nine other metaheuristic algorithms: GA, HBMO, GSA, IBA, FA, MFA, krill, hybrid GA-krill and WCA, which were developed by previous researchers. The results indicated the remarkable performance of MSA compared to all other algorithms in the optimal operation of four-reservoir and 10-reservoir systems. This algorithm successfully reached the absolute global optimum in both multi-reservoir systems. It also had the shortest CPU time for obtaining the optimal value. The findings of this research and the application of the same methodology for the optimal operation of multi-reservoir systems will enable decision makers to make informed choices on water development, conservation, allocation, and use in the context of growing demands for all uses and increased scarcity. In addition to the low cost, easy implementation and simple procedure of the methodology presented, it has many capabilities that make it attractive to be used by water policymakers, water resources planners, and reservoir managers.

ACKNOWLEDGEMENTS

We are grateful to the Research Council of Shahid Chamran University of Ahvaz for financial support (GN: SCU.WH98.26878). Also, we acknowledge the Khuzestan Water and Power Authority.

Table 9 | Comparison of results obtained for the four- and 10-reservoir problems

Study	Algorithm	Average value of the objective functions	
		Four-reservoir system	10-reservoir system
Wardlaw & Sharif (1999)	GA	–	1,190.25
Bozorg-Haddad <i>et al.</i> (2011, 2016)	HBMO	307.50	1,148.05
	GSA	308.30	–
Ahmadianfar <i>et al.</i> (2016)	IBA	308.05	1,192.89
Garousi-Nejad <i>et al.</i> (2016)	FA	305.51	1,097.41
	MFA	308.21	1,183.59
Ehteram <i>et al.</i> (2017)	Krill	307.26	1,189.66
	Hybrid GA-krill	308.17	1,193.91
Qaderi <i>et al.</i> (2018)	WCA	306.39	1,172.42
Present study	HS	264.61	1,060.76
	ICA	306.47	1,136.22
	MSA	308.83	1,195.58

DATA AVAILABILITY STATEMENT

All relevant data are included in the paper or its Supplementary Information.

REFERENCES

- Abd-Elazim, S. M. & Ali, E. S. 2016 Imperialist competitive algorithm for optimal STATCOM design in a multi-machine power system. *International Journal of Electrical Power and Energy Systems* **76**, 136–146.
- Abualigah, L., Diabat, A. & Geem, Z. W. 2020 A comprehensive survey of the harmony search algorithm in clustering applications. *Applied Sciences* **10** (11), 3827–3852.
- Afshar, M. H. 2012 Large scale reservoir operation by constrained particle swarm optimization algorithms. *Journal of Hydro-Environment Research* **6** (1), 75–87.
- Afshar, M. H. 2013 Extension of the constrained particle swarm optimization algorithm to optimal operation of multi-reservoirs system. *International Journal of Electrical Power and Energy Systems* **51**, 71–81.
- Afshar, A., Emami Skardi, M. J. & Masoumi, F. 2015 Optimizing water supply and hydropower reservoir operation rule curves: an imperialist competitive algorithm approach. *Engineering Optimization* **47** (9), 1208–1225.
- Afsari, A., Ramezani, M., Heidari, S. & Karimi, J. 2020 Imperialist competitive algorithm (ICA) approach for optimization of the surface grinding process. *Journal of Modern Processes in Manufacturing and Production* **9** (1), 51–62.
- Ahmadianfar, I., Adib, A. & Salarijazi, M. 2016 Optimizing multireservoir operation: hybrid of bat algorithm and differential evolution. *Journal of Water Resources Planning and Management* **142** (2), 05015010.
- Al-Aqeeli, Y. H. & Agha, O. M. M. 2020 Optimal operation of multi-reservoir system for hydropower production using particle swarm optimization algorithm. *Water Resources Management* **34** (10), 3099–3112.
- Al-Betar, M. A., Awadallah, M. A., Khader, A. T. & Bolaji, A. L. A. 2016 Tournament-based harmony search algorithm for non-convex economic load dispatch problem. *Applied Soft Computing* **47**, 449–459.
- Al Dossary, M. A. & Nasrabadi, H. 2016 Well placement optimization using imperialist competitive algorithm. *Journal of Petroleum Science and Engineering* **147**, 237–248.
- Asadih, B. & Afshar, A. 2019 Optimization of water-supply and hydropower reservoir operation using the charged system search algorithm. *Hydrology* **6** (1), 5.
- Ashofteh, P. S., Haddad, O. B. & Loáiciga, H. A. 2015 Evaluation of climatic-change impacts on multiobjective reservoir operation with multiobjective genetic programming. *Journal of Water Resources Planning and Management* **141** (11), 04015030.
- Atashpaz-Gargari, E. & Lucas, C. 2007 Imperialist competitive algorithm: an algorithm for optimization inspired by imperialistic competition. In: *2007 IEEE Congress on Evolutionary Computation*, pp. 4661–4667.
- Ayvaz, M. T. 2009 Application of harmony search algorithm to the solution of groundwater management models. *Advances in Water Resources* **32**, 916–924.
- Ayvaz, M. T. 2010 A linked simulation-optimization model for solving the unknown groundwater pollution source identification problems. *Journal of Contaminant Hydrology* **117**, 46–59.
- Azizpour, M., Sattari, A., Afshar, M. H., Goharian, E. & Solis, S. S. 2020 Optimal hydropower operation of multi-reservoir systems: hybrid cellular automata-simulated annealing approach. *Journal of Hydroinformatics* **22** (5), 1236–1257.
- Bashiri-Atrabi, H., Qaderi, K., Rheinheimer, D. E. & Sharifi, E. 2015 Application of harmony search algorithm to reservoir operation optimization. *Water Resources Management* **29** (15), 5729–5748.
- Bekdas, G., Arama, Z. A., Kayabekir, A. E. & Geem, Z. W. 2020 Optimal design of cantilever soldier pile retaining walls embedded in frictional soils with harmony search algorithm. *Applied Sciences* **10** (9), 3232–3248.
- Bozorg Haddad, O., Afshar, A. & Mariño, M. A. 2011 Multi reservoir optimization in discrete and continuous domains. In *Proceedings of the Institution of Civil Engineers – Water Management* **164** (2), 57–72. Thomas Telford Ltd.
- Bozorg Haddad, O., Moravej, M. & Loáiciga, H. A. 2015 Application of the water cycle algorithm to the optimal operation of reservoir systems. *Journal of Irrigation and Drainage Engineering* **141** (5). doi:10.1061/(ASCE)IR.1943-4774.0000832.
- Bozorg-Haddad, O., Janbaz, M. & Loáiciga, H. A. 2016 Application of the gravity search algorithm to multi-reservoir operation optimization. *Advances in Water Resources* **98**, 173–185.
- Bozorg-Haddad, O., Azad, M., Fallah-Mehdipour, E., Delpasand, M. & Chu, X. 2020 Verification of FPA and PSO algorithms for rule curve extraction and optimization of single-and multi-reservoir systems' operations considering their specific purposes. *Water Supply*. <https://doi.org/10.2166/ws.2020.274>.
- Chang, F. J., Chen, L. & Chang, L. C. 2005 Optimizing the reservoir operating rule curves by genetic algorithms. *Hydrological Processes* **19** (11), 2277–2289.
- Cheng, M. Y., Prayogo, D., Wu, Y. W. & Lukito, M. M. 2016 A hybrid harmony search algorithm for discrete sizing optimization of truss structure. *Automation in Construction* **69**, 21–33.
- Cisty, M. 2008 Automated calibration of the simulation model of irrigation projects by harmony search optimization. *Water Land Develop* **12** (1), 3–13.
- Dehghani, M., Riahi-Madvar, H., Hooshyaripor, F., Mosavi, A., Shamshirband, S., Zavadskas, E. K. & Chau, K. W. 2019 Prediction of hydropower generation using grey wolf optimization adaptive neuro-fuzzy inference system. *Energies* **12** (2), 289.

- Duong, T. L., Nguyen, T. T., Van-Duc, P. & Nguyen, T. T. 2020 Determining optimal location and size of capacitors in radial distribution networks using moth swarm algorithm. *International Journal of Electrical and Computer Engineering* **10** (5), 4514.
- Ehteram, M., Mousavi, F., Karami, H., Farzin, S., Emami, M., Othman, F. B., Amini, Z., Kisi, O. & El-Shafie, A. 2017 Fast convergence optimization model for single and multi-purposes reservoirs using hybrid algorithm. *Advanced Engineering Informatics* **32**, 287–298.
- Ehteram, M., Karami, H. & Farzin, S. 2018 Reducing irrigation deficiencies based optimizing model for multi-reservoir systems utilizing spider monkey algorithm. *Water Resources Management* **32** (7), 2315–2334.
- Ehteram, M., Binti Koting, S., Afan, H. A., Mohd, N. S., Malek, M. A., Ahmed, A. N. & El-Shafie, A. 2019 New evolutionary algorithm for optimizing hydropower generation considering multi-reservoir systems. *Applied Sciences* **9** (11), 2280.
- Emami, S. & Parsa, J. 2020 Comparative evaluation of imperialist competitive algorithm and artificial neural networks for estimation of reservoirs storage capacity. *Applied Water Science* **10** (7), 1–13.
- Eskandar, H., Sadollah, A., Bahreininejad, A. & Hamdi, M. 2012 Water cycle algorithm – a novel metaheuristic optimization method for solving constrained engineering optimization problems. *Computers and Structures* **110** (1), 151–166.
- Fallah-Mehdipour, E., Bozorg Haddad, O. & Mariño, M. A. 2013a Developing reservoir operational decision rule by genetic programming. *Journal of Hydroinformatics* **15** (1), 103–119.
- Fallah-Mehdipour, E., Bozorg-Haddad, O. & Mariño, M. A. 2013b Extraction of optimal operation rules in an aquifer-dam system: genetic programming approach. *Journal of Irrigation and Drainage Engineering* **139** (10), 872–879.
- Fallah-Mehdipour, E., Haddad, O. B. & Mariño, M. A. 2012 Real-time operation of reservoir system by genetic programming. *Water Resources Management* **26** (14), 4091–4103.
- Fathy, A. & Rezk, H. 2017 Parameter estimation of photovoltaic system using imperialist competitive algorithm. *Renewable Energy* **111**, 307–320.
- Feng, Z. K., Niu, W. J., Zhang, R., Wang, S. & Cheng, C. T. 2019 Operation rule derivation of hydropower reservoir by k-means clustering method and extreme learning machine based on particle swarm optimization. *Journal of Hydrology* **576**, 229–238.
- Feng, Z. K., Niu, W. J., Liu, S., Luo, B., Miao, S. M. & Liu, K. 2020 Multiple hydropower reservoirs operation optimization by adaptive mutation sine cosine algorithm based on neighborhood search and simplex search strategies. *Journal of Hydrology* **590**, 125223.
- Garousi-Nejad, I., Bozorg-Haddad, O., Loáiciga, H. A. & Mariño, M. A. 2016 Application of the firefly algorithm to optimal operation of reservoirs with the purpose of irrigation supply and hydropower production. *Journal of Irrigation and Drainage Engineering* **142** (10), 04016041.
- Geem, Z. W. 2006 Optimal cost design of water distribution networks using harmony search. *Engineering Optimization* **38** (3), 259–280.
- Geem, Z. W. 2007 Optimal scheduling of multiple dam system using harmony search algorithm. In: *International Work – Conference on Artificial Neural Networks*. Springer, Berlin, Heidelberg, pp. 316–323.
- Geem, Z. W. & Cho, Y. H. 2011 Optimal design of water distribution networks using parameters-setting-free harmony search for two major parameters. *Water Resources Planning and Management* **137** (4), 377–380.
- Geem, Z. W., Kim, J. H. & Loganathan, G. V. 2001 A new heuristic optimization algorithm: harmony search. *Journal of Simulation* **76** (2), 60–68.
- Gerist, S. & Maheri, M. R. 2019 Structural damage detection using imperialist competitive algorithm and damage function. *Applied Soft Computing* **77**, 1–23.
- Ghimire, B. N. & Reddy, M. J. 2013 Optimal reservoir operation for hydropower production using particle swarm optimization and sustainability analysis of hydropower. *ISH Journal of Hydraulic Engineering* **19** (3), 196–210.
- Hosseini-Moghari, S. M., Morovati, R., Moghadas, M. & Araghinejad, S. 2015 Optimum operation of reservoir using two evolutionary algorithms: imperialist competitive algorithm (ICA) and cuckoo optimization algorithm (COA). *Water Resources Management* **29** (10), 3749–3769.
- Jalali, M. R., Afshar, A. & Marino, M. A. 2006 Reservoir operation by ant colony optimization algorithms. *Iran Journal of Science and Technology Trans B Engineering* **30** (B1), 107–117.
- Khamari, D., Sahu, R. K. & Panda, S. 2020 A modified moth swarm algorithm-based hybrid fuzzy PD–PI controller for frequency regulation of distributed power generation system with electric vehicle. *Journal of Control, Automation and Electrical Systems* **31**, 675–692.
- Kim, Y. H., Yoon, Y. & Geem, Z. W. 2019 A comparison study of harmony search and genetic algorithm for the max-cut problem. *Swarm and Evolutionary Computation* **44**, 130–135.
- Kotb, M. F. & El-Fergany, A. A. 2020 Optimal power flow solution using moth swarm optimizer considering generating units prohibited zones and valve ripples. *Journal of Electrical Engineering and Technology* **15** (1), 179–192.
- Koti, P., Dhavachelvan, P., KalaiPriyan, T., Arjunan, S., Uthayakumar, J. & Sujatha, P. 2020 An efficient healthcare framework for kidney disease using hybrid harmony search algorithm. *Electronic Government, an International Journal* **16** (1–2), 56–68.
- Kougias, I. P. & Theodossiou, N. P. 2013 Application of the harmony search optimization algorithm for the solution of the multiple dam system scheduling. *Optimization and Engineering* **14** (2), 331–344.
- Kumar, D. N. & Reddy, M. J. 2006 Ant colony optimization for multi-purpose reservoir operation. *Water Resources Management* **20** (6), 879–898.

- Labadie, J. W. 2004 Optimal operation of multi-reservoirs system: state-of-the-art review. *Journal of Water Resources Planning and Management* **130** (2), 93–111.
- Larson, R. E. 1968 *State Increment Dynamic Programming*. Elsevier Science, New York.
- Lei, D., Yuan, Y., Cai, J. & Bai, D. 2020 An imperialist competitive algorithm with memory for distributed unrelated parallel machines scheduling. *International Journal of Production Research* **58** (2), 597–614.
- Mikaeil, R., Haghshenas, S. S., Haghshenas, S. S. & Ataei, M. 2018 Performance prediction of circular saw machine using imperialist competitive algorithm and fuzzy clustering technique. *Neural Computing and Applications* **29** (6), 283–292.
- Mirbeyk, S. M., Torabi, P. H. & Younesi, H. 2020 Assessment of Application of Harmony Search Optimization Algorithm in Optimal Multi-Reservoir and Real Single-Reservoir Systems (Case Study: Dez Dam).
- Moeini, R. & Afshar, M. H. 2013 Extension of the constrained ant colony optimization algorithms for the optimal operation of multi-reservoir systems. *Journal of Hydroinformatics* **15** (1), 155–173.
- Moeini, R. & Babaei, M. 2020 Hybrid SVM-CIPSO methods for optimal operation of reservoir considering unknown future condition. *Applied Soft Computing* 106572. <https://doi.org/10.1016/j.asoc.2020.106572>.
- Mohamed, A. A. A., Mohamed, Y. S., El-Gaafary, A. A. & Hemeida, A. M. 2017 Optimal power flow using moth swarm algorithm. *Electric Power Systems Research* **142**, 190–206.
- Mohammadi, M., Farzin, S., Mousavi, S. F. & Karami, H. 2019 Investigation of a new hybrid optimization algorithm performance in the optimal operation of multi-reservoir benchmark systems. *Water Resources Management* **33** (14), 4767–4782.
- Murray, D. M. & Yakowitz, J. 1979 Constrained differential dynamic programming and its application to multireservoir control. *Water Resources Research* **15** (5) 1017–1027.
- Mohammed, M. N., Daham, B. F. A. & Mohammed, K. S. 2018 Darbandikhan reservoir operation optimization using ant colony optimization algorithm. *Zanco Journal of Pure and Applied Sciences* **30** (1), 135–141.
- Niu, W. J., Feng, Z. K., Feng, B. F., Min, Y. W., Cheng, C. T. & Zhou, J. Z. 2019 Comparison of multiple linear regression, artificial neural network, extreme learning machine, and support vector machine in deriving operation rule of hydropower reservoir. *Water* **11** (1), 88.
- Qaderi, K., Akbarifard, S., Madadi, M. R. & Bakhtiari, B. 2018 Optimal operation of multi-reservoirs by water cycle algorithm. *Proceedings of the Institution of Civil Engineers-Water Management* **171** (4), 179–190.
- Rahimi, H., Ardakani, M. K., Ahmadian, M. & Tang, X. 2020 Multi-reservoir utilization planning to optimize hydropower energy and flood control simultaneously. *Environmental Processes* **7** (1), 41–52.
- Saka, M. P., Hasançebi, O. & Geem, Z. W. 2016 Metaheuristics in structural optimization and discussions on harmony search algorithm. *Swarm and Evolutionary Computation* **28**, 88–97.
- Sayed, F., Kamel, S., Yu, J. & Jurado, F. 2020 Optimal load shedding of power system including optimal TCSC allocation using moth swarm algorithm. *Iranian Journal of Science and Technology, Transactions of Electrical Engineering* **44** (2), 741–765.
- Sharif, M. & Wardlaw, R. 2000 Multi-reservoir systems optimization using genetic algorithms: case study. *Journal of Computing in Civil Engineering* **14** (4), 255–263.
- Shen, J. H., Liu, L. D., Sun, X. N. & Zhang, X. R. 2017 Time-cost trade-off of project based on the improved harmony search algorithm. *Journal of Engineering Management* **31** (2), 121–125.
- Shilaja, C. & Arunprasath, T. 2019 Optimal power flow using moth swarm algorithm with gravitational search algorithm considering wind power. *Future Generation Computer Systems* **98**, 708–715.
- Shiva, C. K. & Kumar, R. 2020 Quasi-oppositional harmony search algorithm approach for Ad Hoc and Sensor networks. In: *Nature Inspired Computing for Wireless Sensor Networks* (D. De, A. Mukherjee, S. Kumar Das & N. Dey, eds). Springer, Singapore, pp. 175–194.
- Soghrati, F. & Moeini, R. 2020 Deriving optimal operation of reservoir proposing improved artificial bee colony algorithm: standard and constrained versions. *Journal of Hydroinformatics* **22** (2), 263–280.
- Talaei, K., Rahati, A. & Idoumghar, L. 2020 A novel harmony search algorithm and its application to data clustering. *Applied Soft Computing* **92**, 106273.
- Wardlaw, R. & Sharif, M. 1999 Evaluation of genetic algorithms for optimal reservoir system operation. *Journal of Water Resources Planning and Management* **125** (1), 25–33.
- Willmott, C. J. 1981 On the validation of models. *Physical Geography* **2** (2) 184–194.
- Yang, X., Luo, Q., Zhang, J., Wu, X. & Zhou, Y. 2017 Moth swarm algorithm for clustering analysis. In: *International Conference on Intelligent Computing*. Springer, Cham, pp. 503–514.
- Yoo, D. G., Lee, S. M., Lee, H. M., Choi, Y. H. & Kim, J. H. 2018 Optimizing re-chlorination injection points for water supply networks using harmony search algorithm. *Water* **10** (5), 547.
- Zhou, Y., Yang, X., Ling, Y. & Zhang, J. 2018 Meta-heuristic moth swarm algorithm for multilevel thresholding image segmentation. *Multimedia Tools and Applications* **77** (18), 23699–23727.
- Zhou, J., Jia, B., Chen, X., Qin, H., He, Z. & Liu, G. 2019 Identifying efficient operating rules for hydropower reservoirs using system dynamics approach – a case study of Three Gorges Reservoir, China. *Water* **11** (12), 2448.

First received 28 July 2020; accepted in revised form 4 December 2020. Available online 15 December 2020