

Transplantation of Reversibly Immortalized Insulin-Secreting Human Hepatocytes Controls Diabetes in Pancreatectomized Pigs

Teru Okitsu,¹ Naoya Kobayashi,¹ Hee-Sook Jun,² Seungjin Shin,² Su-Jin Kim,² Jaeseok Han,² Hyokjoon Kwon,² Masakiyo Sakaguchi,³ Toshinori Totsugawa,¹ Michinori Kohara,⁴ Karen A. Westerman,⁵ Noriaki Tanaka,¹ Philippe Leboulch,^{5,6,7} and Ji-Won Yoon²

Type 1 diabetes results from the destruction of insulin-producing pancreatic β -cells by a β -cell-specific autoimmune process. Although converting other cell types into insulin-producing cells may compensate for the loss of the β -cell mass while evading β -cell-specific T-cell responses, proof-of-principle of this approach in large animal models is lacking. This investigation was initiated to determine whether an insulin-producing human hepatocyte line can control diabetes when transplanted into totally pancreatectomized diabetic pigs. We established a reversibly immortalized human hepatocyte line, YOCK-13, by transferring a human telomerase reverse transcriptase cDNA and a drug-inducible Cre recombinase cassette, followed by cDNA for a modified insulin under the control of the L-type pyruvate kinase (L-PK) promoter. YOCK-13 cells produced small amounts of modified insulin and no detectable endogenous L-PK at low glucose concentrations, whereas they produced large amounts of both modified insulin and L-PK in response to high glucose concentrations. Xenotransplantation of YOCK-13 cells via the portal vein into immunosuppressed, totally pancreatectomized pigs decreased hyperglycemia and prolonged survival without adverse effects such as portal thrombosis, liver necrosis, pulmonary embolism, and tumor development. We suggest that this reversibly immortalized, insulin-secreting human hepatocyte line may overcome the shortage of donor pancreata for islet transplantation into patients with type 1 diabetes. *Diabetes* 53:105–112, 2004

From the ¹Department of Surgery, Okayama University Graduate School of Medicine and Dentistry, Okayama, Japan; the ²Laboratory of Viral and Immunopathogenesis of Diabetes, Julia McFarlane Diabetes Research Centre, Faculty of Medicine, The University of Calgary, Calgary, Alberta, Canada; the ³Department of Cell Biology, Okayama University Graduate School of Medicine and Dentistry, Okayama, Japan; the ⁴Department of Microbiology and Cell Biology, The Tokyo Metropolitan Institute of Medical Science, Honkomagome, Bukyo-ku, Japan; the ⁵Division of Health Sciences and Technology, Massachusetts Institute of Technology, Cambridge, Massachusetts; ⁶Genetix Pharmaceuticals, Cambridge, Massachusetts; and the ⁷Department of Medicine, Harvard Medical School and Brigham and Women's Hospital, Boston, Massachusetts.

Address correspondence and reprint requests to Dr. Ji-Won Yoon, Faculty of Medicine, The University of Calgary, Calgary, Alberta T2N 4N1, Canada. E-mail: yoon@ucalgary.ca. Dr. Naoya Kobayashi, E-mail: immortal@md.okayama-u.ac.jp or Dr. Philippe Leboulch, E-mail: pleboulch@mit.edu.

Received for publication 27 May 2003 and accepted in revised form 6 October 2003.

EGFP, enhanced green fluorescent protein; hTERT, human telomerase reverse transcriptase; IVGTT, intravenous glucose tolerance test; L-PK, L-type pyruvate kinase; STZ, streptozotocin.

© 2004 by the American Diabetes Association.

Despite intensive management, type 1 diabetes is still associated with a high incidence of complications and considerable subsequent mortality (1). Although much progress has been achieved in the field of islet transplantation in humans, islet isolation is expensive, laborious, and severely limited by a scarcity of donor pancreata (2,3). Thus, there is a growing need for another source of tissue for islet transplantation. There are several possible alternatives, including porcine islets, human-derived cell lines, and insulin-secreting cells differentiated from stem cells (4–10). The use of animal cells raises concerns regarding transmission of infectious pathogens and immunologic and physiologic incompatibilities between animals and humans (11). The long-term culture of pancreatic ductal epithelial cells, which were considered to contain tissue-specific stem cells, induced differentiation of such cells into functioning islets (12). However, the induction and differentiation of multipotent stem cells into insulin-secreting cells are not well characterized, and the use of these cells in humans will take a long time to develop. Another potential form of treatment is ex vivo gene therapy, in which cells transduced and expanded in vitro would be transplanted into the diabetic patient. Hepatocytes and muscle cells are attractive candidates for such therapy because these cells have the glucose transporters Glut2 and -4 (13–16).

We previously developed in vivo insulin gene therapy in which hepatocytes were transduced with an adenovirus-associated vector expressing a modified insulin under the control of the glucose-sensitive, hepatocyte-specific L-type pyruvate kinase (L-PK) promoter. Treatment of streptozotocin-induced diabetic rats and nonobese diabetic (NOD) mice with this gene construct resulted in the long-term remission of diabetes (13). These results suggest that hepatocytes would be good candidates for cell therapy for type 1 diabetes.

We have established human hepatocyte lines for using Cre/loxP-based reversible immortalization, which allows the rapid preparation of safe, functional, and uniform hepatocytes (17). In the present study, we focus on engineering a reversibly immortalized insulin-secreting human hepatocyte line containing the modified insulin gene. Such a cell line would provide unlimited availability with the potential to treat a large number of patients. We

present here Cre/loxP-based amplification of insulin-secreting human hepatocytes in vitro by retroviral transfer of human telomerase reverse transcriptase (hTERT) cDNA, which confers immortality (18); insertion of a drug-inducible Cre recombinase cassette (MerCreMer), which allows later excision of the hTERT gene (19); and introduction of modified insulin cDNA under the control of the hepatocyte-specific L-PK promoter. Multiple injection of the resultant YOCK-13 cells via the portal vein significantly prolonged the survival and lowered blood glucose of diabetic pigs previously undergoing total pancreatectomy.

RESEARCH DESIGN AND METHODS

Generation of the YOCK-13 cell line. The YOCK-13 cell line was derived from the reversibly immortalized human hepatocyte line TTNT-16-3. Briefly, human hepatocytes were transduced with a recombinant retroviral vector (SSR#197) (20) containing cDNAs expressing hTERT, for immortalization, and enhanced green fluorescent protein (EGFP), for a selection marker, flanked by a pair of recombination target loxPs. Two days after three rounds of SSR#197 transduction, cells were sorted using a FACSCalibur system (BD Biosciences Immunocytometry Systems, San Jose, CA) for recovering EGFP-positive cell populations. One of the EGFP-positive immortalized clones, TTNT-16, was selected on the basis of its hepatocyte-specific gene expression profile and negative tumorigenesis. Then, cells were transduced with a plasmid encoding a tamoxifen-inducible Cre recombinase fused with paired mutant estrogen receptor ligand-binding domains (MerCreMer) under the control of the CAG promoter (cytomegalovirus IE enhancer, chicken β -actin promoter, and β -globin splicing acceptor) with a puromycin resistance gene. One of the resultant puromycin-resistant clones, TTNT-16-3, grew steadily in tissue culture with serum-free ISE-RPMI medium (21). TTNT-16-3 cells were further transduced with a plasmid vector expressing modified insulin and zeocin resistance genes under the control of the rat L-PK promoter. After transfection, cells were cultured with zeocin-containing ISE-RPMI medium, and zeocin-resistant cells were cloned by limiting dilution. Among 41 clones, 1 clone was selected on the basis of high modified insulin expression assessed by immunofluorescent staining as described below and designated as YOCK-13. YOCK-13 cells were mass cultured using BD Falcon Tuffrol RollerBottles (BD Biosciences, Franklin Lakes, NJ).

Tamoxifen-mediated reversion of immortalization. To induce Cre/loxP recombination, cells were incubated in 500 nmol/l hydroxytamoxifen (Sigma, St. Louis, MI). EGFP-negative cells were isolated with the high-speed cell sorter Moflo (DakoCytomation, Tokyo, Japan).

Expression of hTERT and telomerase activity. Total RNA was isolated from YOCK-13 cells, before or after reversion, using RNeasy (Qiagen, Crawfordsville, IN) in a single-step phenol extraction method. RT-PCR was performed with specific primers in volumes of 50 μ l containing 2.0 μ g RT products, as previously described (17). Telomerase activity in YOCK-13 cells was assayed by the PCR-based telomeric repeat amplification protocol (TRAP) using the telomerase detection kit TRAPEze (Serologicals, Norcross, GA) according to the manufacturer's protocol. Cellular extracts from TTNT-16-3 cells were diluted to 100 ng/ml. Two microliters of each cellular extract were subjected to the TRAP assay, loaded on a 10% polyacrylamid gel, and the products visualized by SYBR Green I staining (Molecular Probes, Eugene, OR) as previously described (17).

Northern blot analysis for endogenous L-PK expression. Total RNA was isolated as described above from both untreated and hydroxytamoxifen-treated YOCK-13 cells cultured in high- and low-glucose medium, respectively. Samples were analyzed by Northern blot with a radiolabeled probe specific for the human L-PK mRNA, as previously described (17).

Western blot analysis for modified insulin expression. Western blot analysis of modified insulin expression was performed as previously described (13). Total cell lysates from YOCK-13 cells were prepared, resolved by 12% SDS-PAGE, and transferred onto nitrocellulose membranes (Amersham Biosciences, Piscataway, NJ). The membranes were treated with a rabbit polyclonal IgG antibody against human insulin (DakoCytomation, Tokyo, Japan) followed by a horseradish peroxidase-conjugated mouse monoclonal IgG antibody against rabbit IgG. Human fibroblasts served as a negative cell control. Human β -actin protein served as a protein control.

Enzyme-linked immunosorbent assay of modified insulin secretion from YOCK-13 cells. Modified insulin secretion in culture supernatant from YOCK-13 cells in the presence of low or high concentrations of glucose, 60 or 450 mg/dl, respectively, was analyzed by enzyme-linked immunosorbent assay as described previously (13).

Immunofluorescence analysis of YOCK-13 cells for modified insulin expression. Hydroxytamoxifen-treated YOCK-13 cells cultured in high- and low-glucose medium, respectively, were analyzed for modified insulin expression by immunofluorescent staining. Rabbit polyclonal IgG antibody against human insulin and fluorescein isothiocyanate-conjugated mouse monoclonal IgG against rabbit IgG (DakoCytomation) were used as primary and secondary antibodies, respectively.

Mouse experiments. All procedures performed on animals were approved by the Okayama University Institutional Animal Care and Use Committee and the University of Calgary Animal Care Committee and were within the guidelines for humane care of laboratory animals. Streptozotocin (STZ; Sigma, St. Louis, MI) was administered intraperitoneally to 20-g Balb/c male mice (CLEA Japan, Tokyo, Japan) at a dose of 220 mg/kg. When hyperglycemia occurred and continued for 3 consecutive days, mice underwent transplantation of hydroxytamoxifen-treated YOCK-13 cells into either renal capsules or the peritoneum at a dose of 1×10^7 and 3×10^7 cells, respectively. Blood glucose levels were measured from tail vein samples using the ACCU-CHEK kit (Roche Diagnostic, Indianapolis, IN) at regular intervals during a 24-h period.

Pig experiments. Male Landrace pigs (JA West of Okayama, Okayama, Japan), weighing 10 kg, were used for all of the experimental groups. Ketalar (1.5 ml) (Sankyo, Tokyo, Japan) was injected intramuscularly to induce sedation. An auricular vein was secured to administer 5 mg/kg Isozol (Yoshitomi, Tokyo, Japan), and intravenous administration of 1 mg/kg Musculax (Sankyo) was performed to achieve muscle relaxation. After intubation, pigs underwent total pancreatectomy under general anesthesia induced with Sevoflurane (Dinabott, Tokyo, Japan). For intraportal cell transplantation, a PORT-A CATH catheter (SIMS Deltec, St. Paul, MN) was inserted from the middle portion of the splenic vein and the tip of the catheter manually placed in the portal vein (22). The cell infusion port site of the PORT-A CATH was subcutaneously embedded into the left groin region.

Intravenous glucose tolerance tests. For the intravenous glucose tolerance test (IVGTT), an 8-Fr Atom-tube (Hakko, Tokyo, Japan) was inserted from the left jugular vein and a tip of the tube was placed in the superior vena cava of pigs 5 days after total pancreatectomy. A total of 75 g glucose was given, and blood samples were obtained from the Atom-tube at various times after glucose loading. Glucose levels were measured as described previously (13).

Histopathological examination. When experimental animals died, autopsy was carefully performed in all pigs. The liver specimens obtained from pigs having received the reverted YOCK-13 cells were prepared with 20% formalin for hematoxylin and eosin staining and cryopreserved with OCT-Tissue TECH compound (R&D Systems, Minneapolis, MN). Sections (5 μ m) were prepared for immunofluorescent staining for modified insulin expression by means of a rabbit polyclonal anti-human insulin IgG antibody, as described above. A fluorescence microscope (Axiophot FL; Carl Zeiss, Oberkochen, Germany) was used to visualize the localization of modified insulin.

Tumorigenicity assay. To evaluate the potential tumorigenicity of YOCK-13 cells, before and after reversion, 10^6 cells were inoculated in the right thigh of Balb/c.scid mice. As a control, 10^6 PLC/PRF/5 cells (23), derived from a human liver tumor, were transplanted on the opposite side. Injected Balb/c.scid mice were observed for at least 3 months.

Statistical analysis. Mean values are presented with SDs. A two-tailed Student's *t* test was used to calculate the significance of difference in mean values. The Kaplan-Meier method was used to calculate the survival data, and the significance of differences was determined by the Mann-Whitney *U* test. A *P* value <0.05 was considered statistically significant.

RESULTS AND DISCUSSION

We obtained a reversibly immortalized human hepatocyte line by single proviral copy transduction of primary human hepatocytes with a polycistronic murine type-C retroviral vector that expresses both hTERT (18) and EGFP under the transcriptional control of the viral long terminal repeat. We inserted two LoxP sites in direct orientation to flank the hTERT-EGFP cassette ("floxing"), in order to terminate both hTERT and EGFP expression, upon its irreversible excision, when Cre recombinase is subsequently expressed (Fig. 1) (17,24). We then stably transfected the cells with a DNA construct that constitutively expresses a modified Cre recombinase that is only active in the presence of hydroxytamoxifen. This recombinant enzyme is a fusion of the Cre recombinase to paired mutant

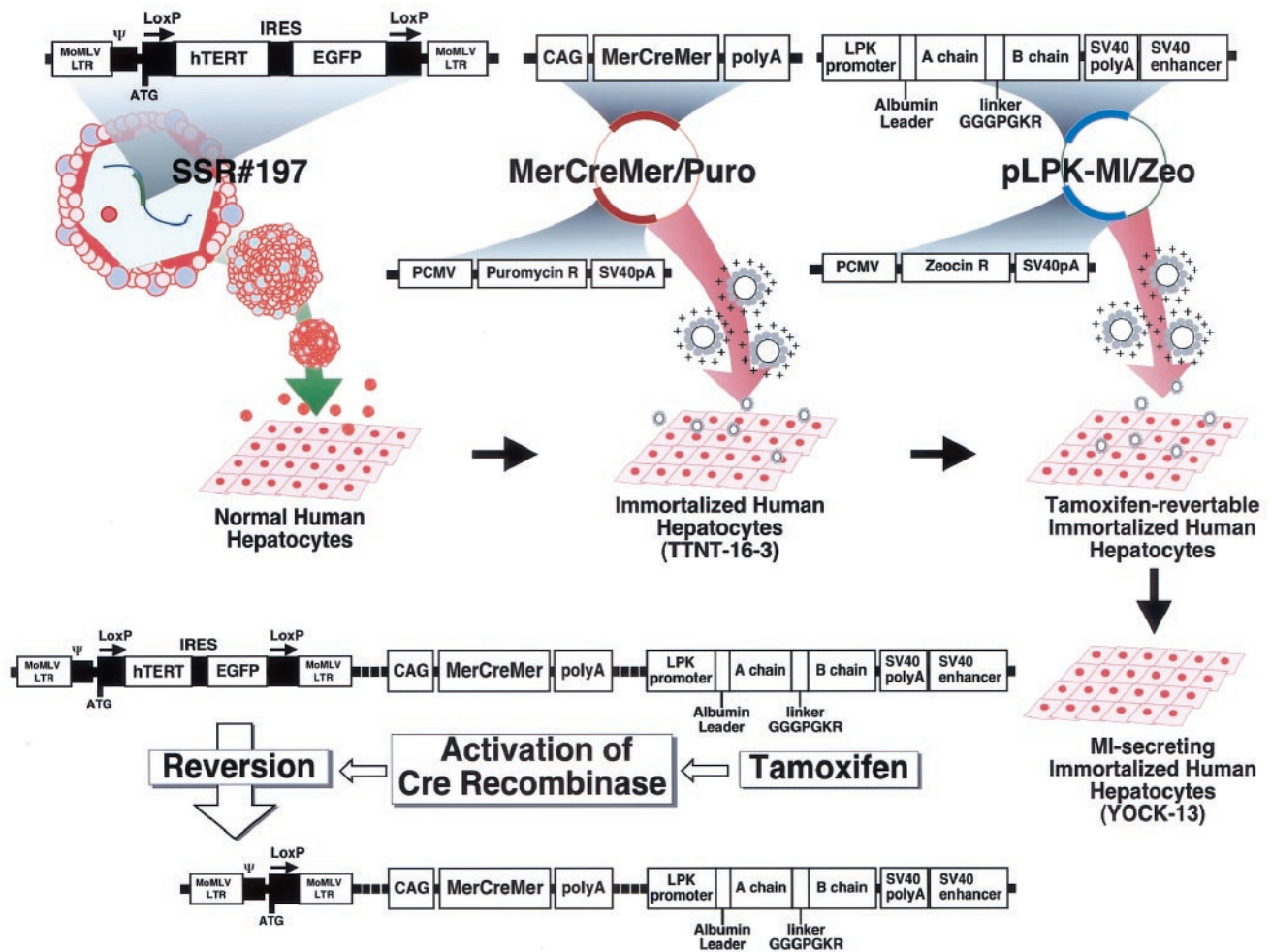


FIG. 1. Generation of the YOCK-13 cell line and gene expression profiles. Schematic drawings of the stepwise reversible immortalization of human hepatocytes expressing modified insulin, as described in the text. CAG promoter, cytomegalovirus IE enhancer fused to the chicken β -actin promoter; IRES, internal ribosomal entry site; MoMLV, moloney murine leukemia virus; polyA, rabbit γ -globin polyadenylation signal; Puromycin R, puromycin resistance gene; Zeocin R, zeocin resistance gene.

estrogen receptor ligand-binding domains (MerCreMer) (19). The resulting clone obtained after extensive screening is referred to as TTNT-16-3 (Fig. 1). We further engineered the resulting clonal cell line to express a variant of human insulin under the transcriptional control of the glucose-sensitive rat L -PK promoter (13). The insulin variant is a single-chain modified insulin, in which the connecting C-peptide of human preproinsulin was substituted by a short turn-forming heptapeptide, and does not require pancreas-specific enzymatic processing (25) for biological activity. A single cell clone, referred to as YOCK-13, was selected for further studies out of 41 tested on the basis of their *in vitro* properties (Fig. 1).

YOCK-13 cells proliferated indefinitely in serum-free medium without observable replicative senescence and with an approximate doubling time of 48 h. YOCK-13 cells were uniformly positive for EGFP expression by FACS analysis (Fig. 2A and B) and displayed morphological characteristics of normal human hepatocytes with a large round nucleus, a few nucleoli, and enriched cytoplasmic granules. YOCK-13 cells expressed markers of hepatocytic differentiation that include albumin, asialoglycoprotein receptor, bilirubin-uridine diphosphate glucuronosyl-transferase, cytochrome p450-associated enzyme 3A4, glu-

tamine synthetase, glutathione S-transferase π , and human blood coagulation factor X (data not shown). Approximately 60% of the cells became EGFP negative, as determined by FACS analysis after a 7-day incubation with 500 nmol/l hydroxytamoxifen (Fig. 2A). In contrast, there was no change in the proportion of EGFP-positive cells when YOCK-13 cells were treated with 17 β -estradiol (Fig. 2B), thus indicating the lack of cross-activity between hydroxytamoxifen and other related naturally occurring hormones.

EGFP-negative cells isolated by high-speed cell sorting after hydroxytamoxifen exposure were negative for both expression of hTERT and telomerase activity and remained in the reverted form with excellent viability in culture for >1 month. Tumorigenicity assays in Balb/*c.scid* mice were negative for both immortalized and reverted cells, whereas tumors developed \sim 3 weeks after inoculation of a human-transformed human liver cell line (PLC/PRF/5) (23).

To determine whether secretion of modified insulin by reverted YOCK-13 cells is appropriately regulated by glucose levels, we examined the expression of both the endogenous L -PK gene and the L -PK promoter-driven recombinant modified insulin in YOCK-13 cells cultured in the presence of low or high concentrations of glucose in

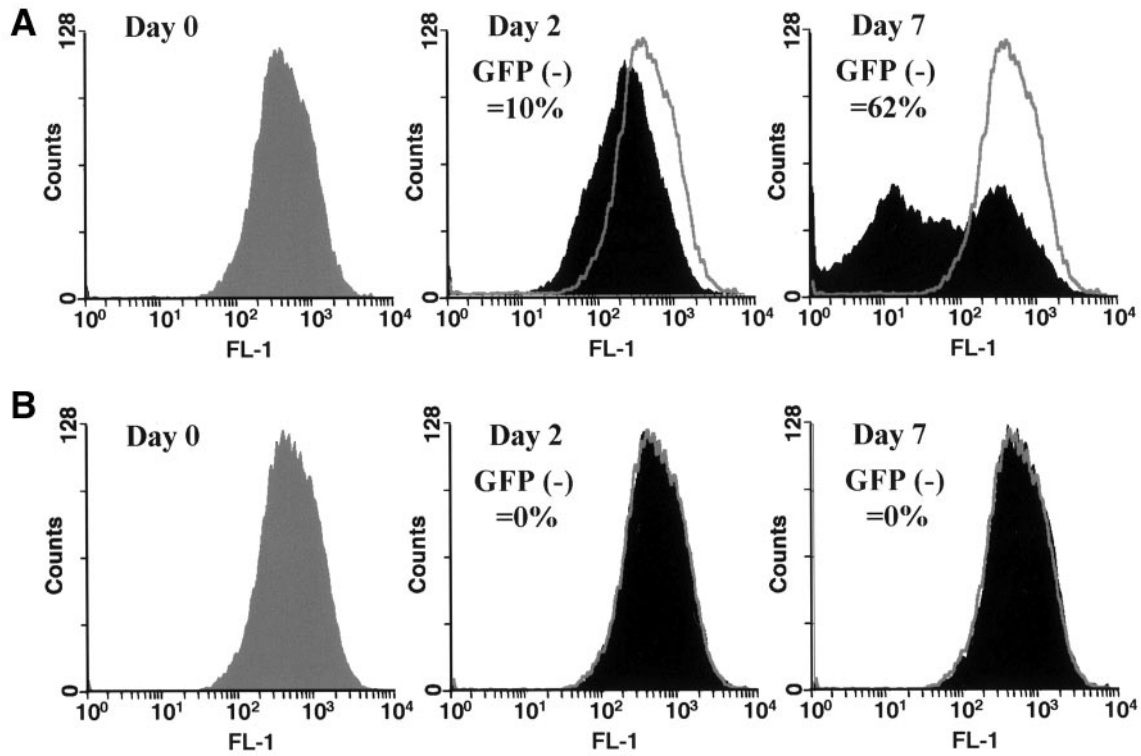


FIG. 2. GFP expression of YOCK-13 cells before and after tamoxifen treatment. Cre/loxP recombination efficiency was evaluated by assessing GFP expression ratios in YOCK-13 cells before (day 0; gray) and 2 and 7 days after (black) treatment with 500 nmol/l tamoxifen (A) or 17β-estradiol (B) as a control. Data are representative of at least three independent experiments.

the medium (60 and 450 mg/dl, respectively). YOCK-13 cells produced very small amounts of modified insulin and no detectable endogenous L-PK at low glucose concentra-

tion, whereas they produced large amounts of both proteins in response to 450 mg/dl glucose (Fig. 3A–C). Even in the presence of high glucose concentrations, expression of

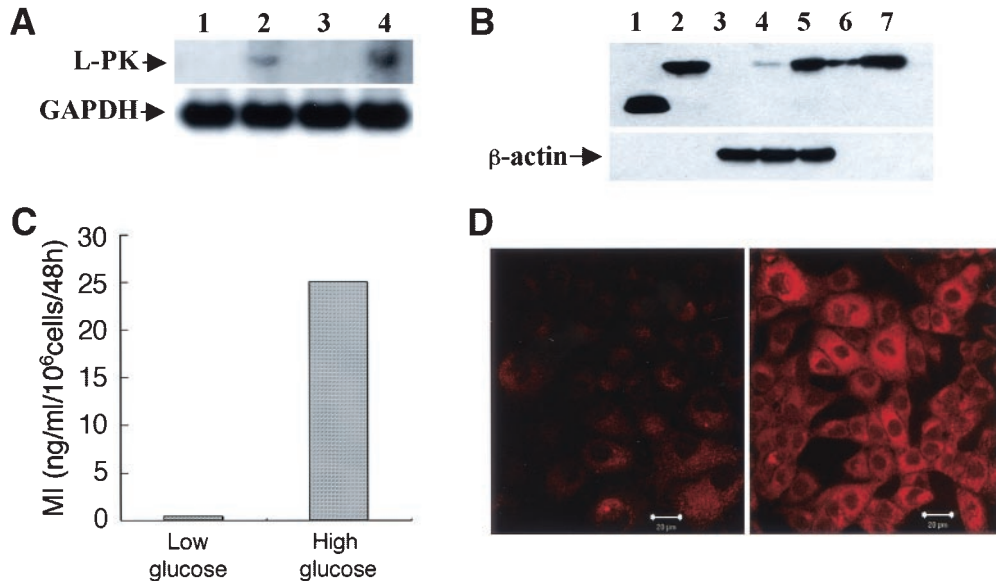


FIG. 3. Expression of L-PK and modified insulin in YOCK-13 cells. **A:** L-PK expression was examined by Northern blot analysis of YOCK-13 cells with a radiolabeled probe before (lanes 1 and 2) and after (lanes 3 and 4) 1 week of tamoxifen treatment, in the presence of low (60 mg/dl; lanes 1 and 3) or high (450 mg/dl; lanes 2 and 4) glucose. Glyceraldehyde-3-phosphate dehydrogenase (GAPDH) was also probed as an internal control. **B:** Expression and secretion of modified insulin protein by YOCK-13 cells into the media were examined by Western blot analysis. 1, Purified insulin protein control; 2, Purified modified insulin protein control (6.5 kDa); 3, Human fibroblast extract; 4, Reverted YOCK-13 cell extract in low glucose; 5, Reverted YOCK-13 cell extract in high glucose; 6, 1-day culture medium from reverted YOCK-13 cells in high glucose; 7, 3-day culture medium from reverted YOCK-13 cells in high glucose. β-actin was also probed as an internal control. **C:** Secretion of modified insulin (MI) was measured by enzyme-linked immunosorbent assay in culture supernatant after 2 days of culture in low or high glucose. **D:** Immunofluorescence staining with a labeled anti-insulin antibody, which also recognizes modified insulin, of reverted YOCK-13 cells cultured in the presence of low (left) and high (right) glucose concentrations.

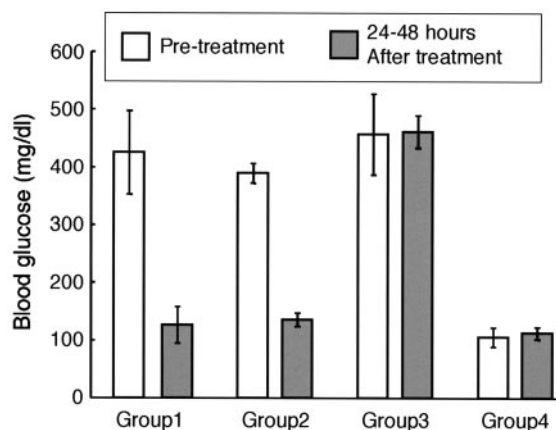


FIG. 4. Reversion of hyperglycemia in STZ-induced diabetic mice. STZ-induced diabetic Balb/c mice were transplanted with reverted YOCK-13 cells into the renal capsules (group 1) or the peritoneum (group 2). As controls, diabetic Balb/c mice were transplanted with medium alone into the peritoneum (group 3), and normal mice were transplanted with reverted YOCK-13 cells into the renal capsules (group 4). Data are shown as means \pm SD ($n = 5$).

endogenous L-PK was notably increased in reverted YOCK-13 cells compared with nonreverted cells (Fig. 3A). In addition, modified insulin was detected in reverted YOCK-13 cells by immunofluorescence staining with an anti-insulin antibody when the cells were cultured in high-glucose conditions (Fig. 3D).

We next set out to determine whether transplantation of modified insulin-producing YOCK-13 cells would be capable of decreasing hyperglycemia in animal models of insulin-dependent diabetes. We first transplanted reverted YOCK-13 cells in mice with STZ-induced diabetes. This initial experiment was only aimed at collecting immediate readouts on glycemia while avoiding the use of immunosuppressive drugs, which may interfere with glucose homeostasis. Reverted YOCK-13 cells were cultured for 24 h in the presence of high concentration of glucose (450 mg/dl) before injection into both renal capsules or the intraperitoneal cavity of STZ-treated mice. As controls, we injected medium into the renal capsule of STZ-treated mice and transplanted reverted YOCK-13 cells into normal mice. All the diabetic mice receiving YOCK-13 cells reverted to the euglycemic state within 24–48 h (Fig. 4). There was no significant difference in the reduction of blood glucose levels between diabetic mice having received YOCK-13 cells intrarenally or intraperitoneally, and no hypoglycemia was seen in either diabetic mice or normal mice injected with YOCK-13 cells (Fig. 4). Diabetic mice receiving medium alone did not have any reduction in blood glucose (Fig. 4).

To evaluate this approach in an animal model of size comparable to that of human patients, we chose Landrace pigs of 10 kg average weight. A normal 10-kg pig has $\sim 3 \times 10^8$ β -cells, which is approximately sixfold less than the number of β -cells in a 60-kg man. We decided to surgically remove the entire pancreas from the pigs to eliminate any possible production of insulin from residual β -cells that usually remain in STZ-induced diabetic animals. An advantage of using pigs is that their bile and pancreatic ducts have completely separate openings into the duodenum; therefore, total pancreatectomy can be successfully performed without the need for bile duct reconstruction (Fig.

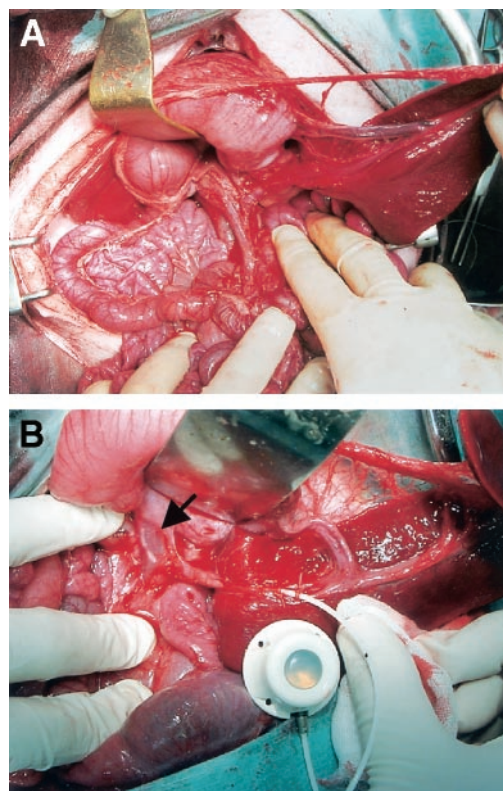


FIG. 5. Pig pancreatectomy and portal vein catheterization. **A:** Macroscopic appearance of total pancreatectomy. **B:** Placement of a PORT-A-CATH catheter in the portal vein via the splenic vein, showing the cell injection port to be embedded subcutaneously in the groin. The arrow indicates the tip of the catheter, located in the portal vein.

5A). Both control and transplanted groups received FK506 as an immunosuppressant. Because FK506 would not be sufficient to prevent immune-mediated destruction of xenotransplanted cells but would only decrease its swiftness and intensity, we decided to perform repeated injections of reverted YOCK-13 cells at regular intervals. In untransplanted control pigs, fasting blood glucose levels rapidly increased from normal levels of 88 ± 14 to 289 ± 35 mg/dl by day 5 postpancreatectomy (Fig. 6A). Glycemia then fluctuated around 275 ± 18 mg/dl for the next few days (Fig. 6A), concurrently to the onset of terminal acidoketosis, with a mean survival time in this group of 7 ± 3 days ($n = 8$) (Fig. 6B). Hydroxytamoxifen-treated, glucose-prestimulated YOCK-13 cells were injected in the portal vein of five pancreatectomized pigs by means of a catheter (Fig. 5B), whose cell infusion port was subcutaneously embedded into the left groin region (22). One infusion of 1×10^9 cells was performed postpancreatectomy on day 5, followed by 2×10^8 cells twice a week until the pigs died. Blood glucose levels in YOCK-13 cell-transplanted pigs were substantially decreased compared with TTNT-16-3 cell (without modified insulin transgene)-transplanted and -nontransplanted controls (Fig. 6A), and the mean survival time of YOCK-13-transplanted pigs was 30 ± 10 days ($n = 8$) (Fig. 6B). In contrast to TTNT-16-3 cell-transplanted and -untransplanted control groups, which became lethargic and comatose, transplanted animals remained active, and the cause of death was principally attributed to protracted diarrhea and related disorders resulting from a lack of pancreas exocrine function.

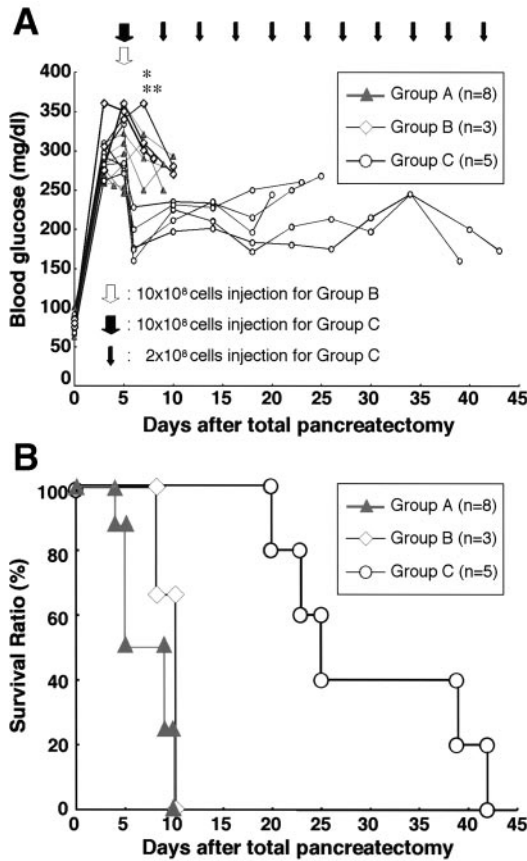


FIG. 6. Effect of YOCK-13 cell transplantation into totally pancreatectomized pigs on the control of blood glucose and survival. **A:** Sustained decrease of hyperglycemia in totally pancreatectomized pigs that received repeated intraportal injections of reverted YOCK-13 cells (group C). Control groups were pigs receiving TTNT-16-3 cells, which do not produce MI (group B), and nontransplanted, pancreatectomized diabetic pigs (group A). * $P < 0.02$, group C vs. group A; ** $P < 0.03$, group C vs. group B (Mann-Whitney U test). **B:** Actuarial survival curves for the three groups of pigs described in **A**.

To determine whether blood glucose levels are controlled in YOCK-13 cell-transplanted pigs, we performed IVGTT. During IVGTT, blood glucose levels in YOCK-13 cell-transplanted pigs peaked at 5 min after glucose injection and then slowly declined to the levels seen before glucose injection; a similar rate of decline was seen in normal, healthy pigs. In contrast, blood glucose levels in pancreatectomized, untransplanted pigs peaked at 5 min after glucose injection and remained high (Fig. 7). This result suggests that blood glucose levels are well controlled by changes in exogenous glucose.

To assess the initial seeding of the liver parenchyma with injected YOCK-13 cells and their subsequent fate, we examined liver sections of totally pancreatectomized pigs at various posttransplantation time points. Two days after the first injection of YOCK-13 cells, we observed, by hematoxylin and eosin (HE) staining, multiple clusters of transplanted YOCK-13 cells embedded throughout the liver in the vicinity of portal spaces (Fig. 8A). Immunofluorescence staining with an anti-human insulin antibody, which also recognizes modified insulin, demonstrated expression of modified insulin in the embedded cell clusters (Fig. 8B). We observed a mild accumulation of mononuclear cells around YOCK-13 cell clusters without their

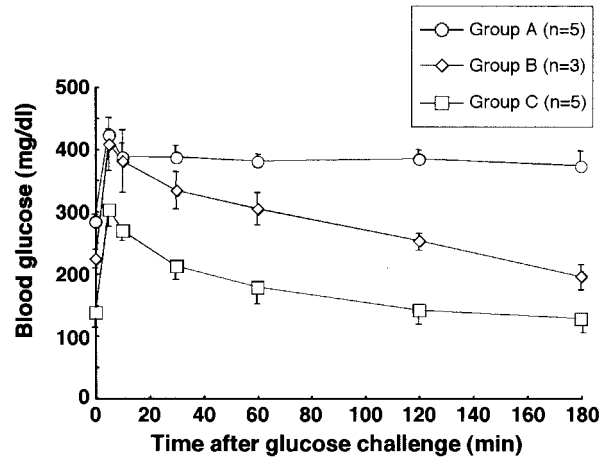


FIG. 7. IVGTT in totally pancreatectomized pigs transplanted with YOCK-13 cells. IVGTT was performed in diabetic control pancreatectomized pigs 5 days after total pancreatectomy (group A), YOCK-13 cell-transplanted pancreatectomized pigs 1 day after transplantation (group B), and normal, healthy pigs (group C). Bars represent means \pm SD.

obvious infiltration (Fig. 8A). However, at the time of death 20–42 days postpancreatectomy, we observed severe mononuclear cell infiltration of the clusters of transplanted YOCK-13 cells (Fig. 8C) and very few cells expressing modified insulin (Fig. 8D). These observations are consistent with the anticipated progressive destruction of the embedded cells by immune rejection of the xenograft. We did not observe other pathological features at autopsy, including portal thrombosis, liver necrosis, pulmonary embolism, or tumor development in the liver or any other organs.

In recent years, allogeneic transplantation of HLA-matched pancreatic islet cells into the liver by intraportal injection has resulted in insulin independence with improved control of the glycemia of selected human patients with type 1 diabetes (3). However, a positive outcome requires adequate islet mass and the lifelong use of a powerful immunosuppressive regimen to prevent graft rejection triggered by both minor histocompatibility antigen and further T-cell-mediated attack of β -cell-specific diabetogenic autoantigens (26,27). Furthermore, the availability of human islets is severely limited by a scarcity of donor pancreata (28). Here, we provide support for the use of hepatocytes expressing modified insulin under the control of the I-PK promoter as an alternative approach.

The procedure of reversible immortalization with autoexcision of hTERT by hydroxytamoxifen-induced site-specific recombination provides a means of obtaining an unlimited supply of cells for engraftment. In addition, the major diabetogenic β -cell-specific antigens that include GAD (29) are not present in hepatocytes (30). The use of recombinant modified insulin may also enable mutagenesis of a putative diabetogenic epitope within insulin itself (31) while preserving biological activity, thereby rendering HLA-matched reversibly immortalized modified insulin-expressing hepatocytes better tolerated than pancreatic islet cells. If applied directly on a per-patient basis from hepatocytes obtained by liver biopsy, it may be possible to achieve autologous transplantation with complete and spontaneous tolerance of the engrafted cells. Previous

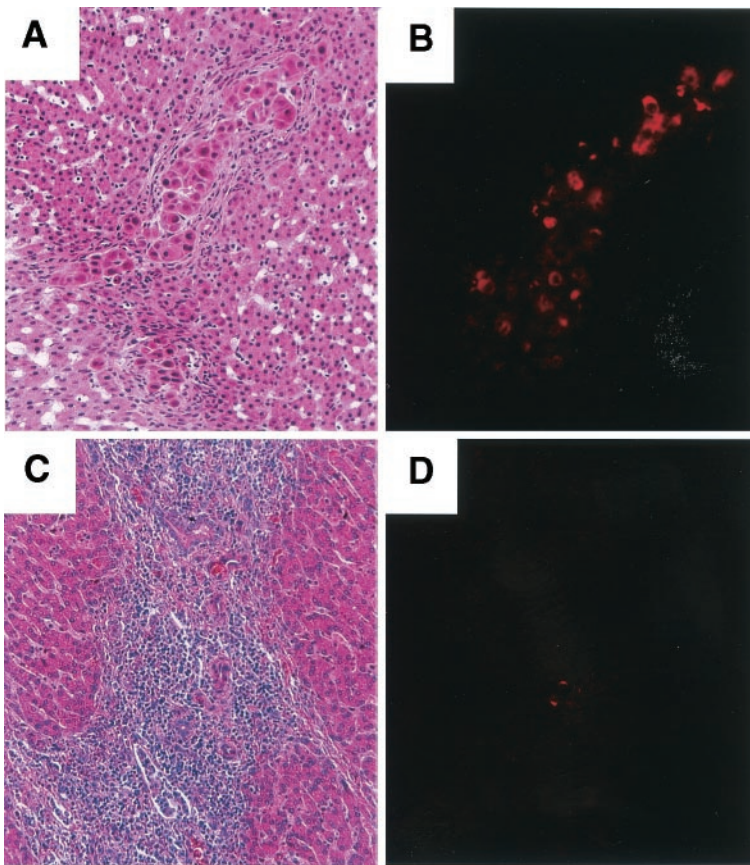


FIG. 8. Expression of modified insulin in transplanted YOCK-13 cells in totally pancreatectomized pigs. **A** and **C**: HE staining of liver sections of a transplanted, pancreatectomized pig. **B** and **D**: Immunofluorescence staining, with a labeled anti-insulin antibody that also recognizes modified insulin, of liver sections of a transplanted, pancreatectomized pig. **A** and **B**: Pancreatectomized pig 2 days after a single intraportal injection of 2×10^9 reverted YOCK-13 cells. **C** and **D**: Pancreatectomized pig at time of death (i.e., 42 days postpancreatectomy) after having received 12 intraportal injections of reverted YOCK-13 cells at the scheduled dosage described in the text. **A–D**: 100 \times original magnification.

studies showed that endogenous hepatocytes expressing transgenic insulin were not attacked by autoimmune effector cells in NOD mice (13). On the basis of this observation, it is expected that syngeneic insulin-producing hepatocytes would avoid autoimmune attack, resulting in the prevention of both rejection and the development of recurrent autoimmunity. Final demonstration of the validity of this approach will be required in long-term transplantation of HLA-matched or autologous cells in nonhuman primate or porcine models. To prevent potential oncogenicity, the autologous cells could be further engineered to express a conditional suicide gene such as herpes simplex virus-thymidine kinase (17).

As a parallel approach to cell therapy for the treatment of type 1 diabetes, this study also provides indirect corroborating evidence for the potential utility of *in vivo* gene transfer into the liver by a modified insulin-expressing vector; whether it be adeno-associated virus (13) or lentivirus derived (32), a strategy for proof-of-principle in a large animal model was lacking.

ACKNOWLEDGMENTS

The work presented in this article was supported in part by the Ministry of Education, Science, and Culture, and the Ministry of Economy and Industry, and Life Science Project of 21st Century, Japan, to N.T., National Institutes of Health grants to P.L., and National Institutes of Health grant 1R21DK60192 and Canadian Institutes of Health Research grant 89687 to J.W.Y.

REFERENCES

1. The Diabetes Control and Complications Trial Research Group: The effect of intensive treatment of diabetes on the development and progression of long-term complications in insulin-dependent diabetes mellitus. *N Engl J Med* 329:977–986, 1993
2. United Network for Organ Sharing, 2002. Available from <http://www.unos.org>. Accessed May 2002
3. Shapiro AM, Lakey JR, Ryan EA, Korbitt GS, Toth E, Warnock GL, Kneteman NM, Rajotte RV: Islet transplantation in seven patients with type 1 diabetes mellitus using a glucocorticoid-free immunosuppressive regimen. *N Engl J Med* 343:230–238, 2000
4. Buhler L, Deng S, O'Neil J, Kitamura H, Koulmanda M, Baldi A, Rahier J, Alwayn IP, Appel JZ, Awwad M, Sachs DH, Weir G, Squifflet JP, Cooper DK, Morel P: Adult porcine islet transplantation in baboons treated with conventional immunosuppression or a non-myeloablative regimen and CD 154 blockade. *Xenotransplantation* 9:3–13, 2002
5. de la Tour D, Halvorsen T, Demeterco C, Tyrberg B, Itkin-Ansari P, Loy M, Yoo SJ, Hao E, Bossie S, Levine F: β -Cell differentiation from a human pancreatic cell line *in vitro* and *in vivo*. *Mol Endocrinol* 15:476–483, 2001
6. Yang L, Li S, Hatch H, Ahrens K, Cornelius JG, Petersen BE, Peck AB: *In vitro* trans-differentiation of adult hepatic stem cells into pancreatic endocrine hormone producing cells. *Proc Natl Acad Sci USA* 99:8078–8083, 2002
7. Lumelsky N, Blondel O, Laeng P, Velasco I, Ravin R, McKay R: Differentiation of embryonic stem cells to insulin-secreting structures similar to pancreatic islets. *Science* 292:1389–1394, 2001
8. Thomson JA, Itskovitz-Eldor J, Shapiro SS, Waknitz MA, Swiergiel JJ, Marshall VS, Jones JM: Embryonic stem cell lines derived from human blastocysts. *Science* 282:1145–1147, 1998
9. Assady S, Maor G, Amit M, Itskovitz-Eldor J, Skorecki KL, Tzukerman M: Insulin production by human embryonic stem cells. *Diabetes* 50:1691–1697, 2001
10. Ferber S, Halkin A, Cohen H, Ber I, Einav Y, Goldberg I, Barshack I, Seiffers R, Kopolovic J, Kaiser N, Karasik A: Pancreatic and duodenal homeobox gene 1 induces expression of insulin genes in liver and ameliorates streptozotocin-induced hyperglycemia. *Nat Med* 6:568–572, 2000
11. Paradis K, Langford G, Long Z, Heneine W, Sandstrom P, Switzer WM, Chapman LE, Lockey C, Onions D, Otto E: Search for cross-species

- transmission of porcine endogenous retrovirus in patients treated with living pig tissue. *Science* 285:1236–1244, 1999
12. Ramiya VK, Maraist M, Arfors KE, Schatz DA, Peck AB, Cornelius JG: Reversal of insulin-dependent diabetes using islets generated in vitro from pancreatic stem cells. *Nat Med* 6:278–282, 2000
 13. Lee HC, Kim SJ, Kim KS, Shin HC, Yoon JW: Remission in models of type 1 diabetes by gene therapy using a single-chain insulin analogue. *Nature* 408:483–488, 2000
 14. Gros L, Riu E, Montoliu L, Ontiveros M, Lebrigand L, Bosch F: Insulin production by engineered muscle cells. *Human Gene Ther* 10:1207–1217, 1999
 15. Vaulont S, Vasseur CM, Kahn A: Glucose regulation of gene transcription. *J Biol Chem* 275:31555–31558, 2000
 16. Chen R, Mesesck M, McEvoy RC, Woo SLC: Glucose-stimulated and self-limiting insulin production by glucose 6-phosphate promoter driven insulin expression in hepatoma cells. *Gene Ther* 7:1802–1809, 2000
 17. Kobayashi N, Fujiwara T, Westerman KA, Inoue Y, Sakaguchi M, Noguchi H, Miyazaki M, Cai J, Tanaka N, Fox LJ, Leboulch P: Prevention of acute liver failure in rats with reversibly immortalized human hepatocytes. *Science* 287:1258–1262, 2000
 18. Bondar AG: Extension of life-span by introduction of telomerase into normal human cells. *Science* 279:349–352, 1998
 19. Zhang Y, Riesterer C, Ayrall AM, Sablitzky F, Littlewood TD, Reth M: Inducible site-directed recombination in mouse embryonic stem cells. *Nucleic Acid Res* 24:543–548, 1996
 20. Westerman KA, Leboulch P: Reversible immortalization of mammalian cells mediated by retroviral transfer and site-specific recombination. *Proc Natl Acad Sci U S A* 93:8971–8976, 1996
 21. Nakabayashi H, Taketa K, Miyano K, Yamane T, Sato J: Growth of human hepatoma cell lines with differentiated functions in chemically defined medium. *Cancer Res* 42:3858–3863, 1982
 22. Morsiani E, Fogli L, Lanza G Jr, Lebow LT, Demetriou AA, Rozga J: Long-term insulin independence following repeated islet transplantation in totally pancreatectomized diabetic pigs. *Cell Transplant* 11:55–66, 2002
 23. Alexander JJ, Bey EM, Geddes EW, Lecatsas G: Establishment of a continuously growing cell line from primary carcinoma of the liver. *S Afr Med J* 50:2124–2128, 1976
 24. Sternberg N, Hamilton D: Bacteriophage P1 site-specific recombination. I. Recombination between loxP sites. *J Mol Biol* 150:467–486, 1981
 25. Davidson HW, Rhodes CJ, Hutton JC: Intraorganellar calcium and pH control proinsulin cleavage in the pancreatic β cell via two distinct site-specific endopeptidases. *Nature* 333:93–96, 1988
 26. Okitsu T, Bartlett ST, Hadley GA, Drachenberg CB, Farney AC: Recurrent autoimmunity accelerates destruction of minor and major histoincompatible islet grafts in nonobese diabetic (NOD) mice. *Am J Transplant* 1:138–145, 2001
 27. Yoon JW, Jun HS: Insulin-dependent diabetes mellitus. In *Encyclopedia of Immunology*. 2nd ed. Roitt IM, Delves PJ, Eds. London, Academic Press, 1998, p. 1390–1398
 28. Zwillich T: Islet transplants not yet ready for prime time. *Science* 289:531–533, 2000
 29. Yoon JW, Yoon CS, Lim HW, Huang QQ, Kang Y, Pyun KH, Hirasawa K, Sherwin RS, Jun HS: Control of autoimmune diabetes in NOD mice by GAD expression or suppression in β cells. *Science* 284:1183–1187, 1999
 30. Karlsen AE, Hagopian WA, Grubin CE, Dube S, Disteché CM, Adler DA, Barmeier H, Mathewes S, Grant FJ, Foster D: Cloning and primary structure of a human islet isoform of glutamic acid decarboxylase from chromosome 10. *Proc Natl Acad Sci U S A* 88:8337–8341, 1991
 31. Wong FS, Karttunen J, Dumont C, Wen L, Visintin I, Pilip IM, Shastri N, Pamer EG, Janeway CA Jr: Identification of an MHC class I-restricted autoantigen in type 1 diabetes by screening an organ-specific cDNA library. *Nat Med* 5:1026–1031, 1999
 32. VandenDriessche T, Thorrez L, Naldini L, Follenzi A, Moons L, Berneman Z, Collen D, Chuah MK: Lentiviral vectors containing the human immunodeficiency virus type-1 central polypurine tract can efficiently transduce nondividing hepatocytes and antigen-presenting cells in vivo. *Blood* 100: 813–822, 2000