

# Plasma Fetuin-A Levels and the Risk of Type 2 Diabetes

Norbert Stefan,<sup>1</sup> Andreas Fritsche,<sup>1</sup> Cornelia Weikert,<sup>2</sup> Heiner Boeing,<sup>2</sup> Hans-Georg Joost,<sup>3</sup> Hans-Ulrich Häring,<sup>1</sup> and Matthias B. Schulze<sup>2,4</sup>

**OBJECTIVE**—The liver-secreted protein fetuin-A induces insulin resistance in animals, and circulating fetuin-A is elevated in insulin resistance and fatty liver in humans. We investigated whether plasma fetuin-A levels predict the incidence of type 2 diabetes in a large prospective, population-based study.

**RESEARCH DESIGN AND METHODS**—A case-cohort study within the European Prospective Investigation into Cancer and Nutrition (EPIC)-Potsdam study comprising 27,548 subjects was designed. We randomly selected a subcohort of 2,500 individuals of whom 2,164 were diabetes free at baseline and had anamnestic, anthropometrical, and metabolic data for analysis. Of the 849 incident diabetic case subjects identified in the full cohort during 7 years of follow-up, 703 remained for analyses after similar exclusions.

**RESULTS**—Plasma fetuin-A levels were positively associated with diabetes risk after adjustment for age (relative risk [RR] for extreme quintiles 1.75 [95% CI 1.32–2.31]; RR for 10  $\mu\text{g/ml}$  1.04 [1.03–1.06]). The association remained significant after adjustment for sex, BMI, waist circumference, and lifestyle risk factors (RR for 10  $\mu\text{g/ml}$  1.03 [1.01–1.06]). Adjustment for glucose, triglycerides, HDL cholesterol, A1C,  $\gamma$ -glutamyltransferase, or high-sensitivity C-reactive protein or mutual adjustment for these biomarkers did not appreciably change this result (RR for 10  $\mu\text{g/ml}$  full adjusted model 1.05 [1.02–1.07]). Furthermore, fetuin-A was associated with increased diabetes risk particularly in individuals with elevated plasma glucose.

**CONCLUSIONS**—Our data suggest that fetuin-A is an independent risk factor of type 2 diabetes. *Diabetes* 57:2762–2767, 2008

**T**ype 2 diabetes represents a major global public health threat and, together with obesity, constitutes an important contributor to the predicted decline in life expectancy (1). The pathophysiology of type 2 diabetes is complex: In addition to impaired insulin secretion from  $\beta$ -cells, reduced insulin sensitivity was found to play a predominant role in the pathogenesis of the disease (2). Several circulating proteins have been shown to be involved in the regulation of insulin sensitivity such as adiponectin (3,4), retinol binding protein 4 (5,6),

and fetuin-A (former name for the human protein  $\alpha_2$ -Heremans-Schmid glycoprotein, AHSG). Fetuin-A is an endogenous inhibitor of the insulin-stimulated insulin receptor tyrosine kinase (7–9). Administration of fetuin-A to rodents inhibited insulin-stimulated tyrosine phosphorylation of the insulin receptor and insulin receptor substrate-1 in rat liver and skeletal muscle (7). In addition, fetuin-A knockout mice exhibited increased insulin sensitivity and were resistant to the adipogenic effect of a high-fat diet (10), supporting the hypothesis that fetuin-A is involved in the pathophysiology of insulin resistance in rodents.

In agreement with these data, we and others have recently shown that high levels of circulating fetuin-A are associated with insulin resistance in humans (11,12), suggesting that fetuin-A may represent a novel mechanism involved in the pathophysiology of type 2 diabetes. In the present study, we investigated whether circulating fetuin-A predicted the incidence of type 2 diabetes, independently of established risk factors, in the large European Prospective Investigation into Cancer and Nutrition (EPIC)-Potsdam Study.

## RESEARCH DESIGN AND METHODS

**Study population and diabetes ascertainment.** The EPIC-Potsdam study is part of the multicenter prospective cohort study EPIC (13). In Potsdam, Germany, 27,548 subjects (16,644 women and 10,904 men) were recruited from the general population between 1994 and 1998. The age range was 35–65 years in women and 40–65 years in men. The baseline examination included anthropometric measurements, a self-administered validated food-frequency questionnaire, and a personal interview, including questions about prevalent diseases, and a questionnaire about sociodemographic and lifestyle characteristics. Follow-up questionnaires were sent out every 2–3 years to identify incident cases of type 2 diabetes. Complete questionnaires of follow-up round 1 were returned from 96%, of follow-up round 2 from 95%, and follow-up round 3 from 93% of the eligible participants. We also included all questionnaires of the 4th follow-up round sent out until 31 January 2005, of which 90% were returned by 31 August 2005. Informed consent was obtained from all participants, and approval was given by the Ethics Committee of the State of Brandenburg, Germany.

At baseline, the presence of type 2 diabetes was evaluated by a physician with information from self-reported medical diagnoses, medication records, and dieting behavior. In ambiguous cases, the diagnosis was confirmed by personal communication with the participant and/or the treating physician. All incident cases of diabetes identified during follow-up were verified by questionnaires that were mailed to the physicians. Thereby, information about the date and the type of diagnosis, about the diagnostic tests, and about the treatment was obtained. Only subjects having had a diagnosis of type 2 diabetes that was confirmed by a physician (ICD10: E11) and a diagnosis date after the baseline examination were considered as incident cases of type 2 diabetes. Within a mean follow-up time of 7.1 years, 849 subjects developed incident type 2 diabetes.

A prospective case-cohort study (14) within the EPIC-Potsdam study was designed. A random subcohort of 2,500 individuals was selected from all participants of the EPIC-Potsdam study population. Participants with prevalent diabetes ( $n = 120$ ) or without follow-up ( $n = 58$ ) were excluded from analyses. Although we considered missing anthropometry as exclusion criteria, none of the subcohort members qualified for exclusion here. Furthermore, we excluded 112 participants for whom not all biomarkers were available and 46 individuals with either unexplainable low plasma glucose concentrations ( $<50$  mg/dl) or concentrations within the diabetic range (random glucose

From the <sup>1</sup>Department of Internal Medicine, Division of Endocrinology, Diabetology, Nephrology, Vascular Disease and Clinical Chemistry, University of Tübingen, Tübingen, Germany; the <sup>2</sup>Department of Epidemiology, German Institute of Human Nutrition Potsdam-Rehbruecke, Nuthetal, Germany; the <sup>3</sup>Department of Pharmacology, German Institute of Human Nutrition Potsdam-Rehbruecke, Nuthetal, Germany; and the <sup>4</sup>Public Health Nutrition Unit, Technische Universität München, Freising, Germany.

Corresponding author: Matthias B. Schulze, matthias.schulze@wzw.tum.de.

Received 22 April 2008 and accepted 30 June 2008.

Published ahead of print at <http://diabetes.diabetesjournals.org> on 15 July 2008. DOI: 10.2337/db08-0538.

© 2008 by the American Diabetes Association. Readers may use this article as long as the work is properly cited, the use is educational and not for profit, and the work is not altered. See <http://creativecommons.org/licenses/by-nc-nd/3.0/> for details.

The costs of publication of this article were defrayed in part by the payment of page charges. This article must therefore be hereby marked "advertisement" in accordance with 18 U.S.C. Section 1734 solely to indicate this fact.

TABLE 1  
Baseline characteristics by quintiles of plasma fetuin-A among men and women, EPIC-Potsdam Study

Characteristics	Quintiles of fetuin-A					P value
	1	2	3	4	5	
Fetuin-A ( $\mu\text{g/ml}$ )	158	201	227	255	304	
Age (years)	51.0	50.4	49.9	48.8	47.6	<0.001
BMI ( $\text{kg/m}^2$ )	25.6	26.1	26.1	25.8	26.2	0.194
Waist circumference (cm)	84.7	86.3	86.1	84.9	84.7	0.562
Sport activities (h/week)	1.0	1.0	1.0	1.1	1.0	0.673
Alcohol consumption (g/day)	14.5	15.2	14.6	15.5	11.3	0.033
Men (%)	39.5	40.3	40.7	38.3	30.7	0.013
Random plasma glucose (mg/dl)	85.8	87.6	87.3	87.2	86.9	0.397
Fasting plasma glucose (mg/dl)*	82.3	87.2	85.9	85.8	86.9	0.006
Triglycerides (mg/dl)	93.9	95.4	99.4	94.3	96.9	0.518
Fasting triglycerides (mg/dl)*	76.7	84.4	82.9	83.5	86.0	0.126
HDL cholesterol (mg/dl)	45.3	46.4	46.6	47.5	48.0	<0.001
$\gamma$ -Glutamyltransferase (units/l)	15.1	17.1	17.3	16.5	17.0	0.093
hs-CRP (mg/dl)	0.06	0.06	0.07	0.06	0.08	<0.001
A1C (%)	6.4	6.5	6.5	6.4	6.4	0.419

\*Data are percent or means (geometric means for glucose, triglycerides, HDL cholesterol, hs-CRP, A1C, and  $\gamma$ -glutamyltransferase). \*In the random subcohort, 246 men and 376 women did not eat for at least 8 h before blood drawing.

$\geq 200$  mg/dl or fasting glucose  $\geq 126$  mg/dl). Altogether, 2,164 participants were included in the random subcohort for analyses. The process of randomly selecting a subcohort, together with the appropriate statistics for this type of research design, renders the results generalizable without measurements of biomarkers in the entire cohort (15). Of the 849 incident case subjects identified in the full cohort, 703 remained for analyses after similar exclusion criteria were applied. Because the subcohort is representative of the full cohort at baseline in case-cohort studies, the subcohort in our analyses included 64 subjects who developed incident type 2 diabetes during follow-up. A total of 639 of the 703 incident case subjects were identified in the remaining part of the total cohort and constituted the "external" cases for analyses (14). A comparison of the randomly selected subcohort, before and after exclusions, and the full EPIC-Potsdam cohort is shown in supplementary Table 1 (available in an online appendix at <http://dx.doi.org/10.2337/db08-0538>). There were no significant differences in age, BMI, or sex distribution between full and subcohort before exclusions, suggesting that the subcohort is representative for the full cohort. Slight differences were observable between full cohort and subcohort after exclusions reflecting the selection of an at baseline diabetes-free population. Subjects in the subcohort were followed for an average of 7.0 years (range 0.3–10.3 years). Incident case subjects had on average a diagnosis date 4.0 years after the baseline assessment (range 0.1–9.7 years).

Participants were not required to be fasted at the baseline assessment. However, about one-third of the participants did not eat for at least 8 h before the blood drawing. Thus, fasting blood samples were available in 622 subjects in the subcohort and in 192 incident case subjects.

**Baseline anthropometrics and lifestyle characteristics.** Waist circumference was measured midway between the lower rib margin and the superior anterior iliac spine to the nearest 0.5 cm with a nonstretching tape applied horizontally, the proper use of which was controlled with a mirror. Information on educational attainment, smoking, occupational activity level, and leisure time physical activity were assessed with a self-administered questionnaire and a personal interview. We considered sport activities and cycling as leisure time activities, both calculated as the average time spent per week during the 12 months before the baseline recruitment.

**Measurement of biochemical variables.** Plasma levels of glucose, HDL cholesterol, triglycerides,  $\gamma$ -glutamyltransferase, and fetuin-A and erythrocyte levels of A1C were measured with the automatic ADVIA 1650 analyzer (Siemens Medical Solutions, Erlangen, Germany). For determination of fetuin-A, an immunoturbidimetric method was used with specific polyclonal goat anti-human fetuin-A antibodies to human fetuin-A (BioVendor Laboratory Medicine, Modreci, Czech Republic). This method was evaluated in a side-by-side comparison with an enzyme-linked immunosorbent assay (intra-assay coefficient of variation [CV] 3.5% and interassay CV 5.4%; BioVendor Laboratory Medicine, Modreci, Czech Republic) (11,12) showing a  $r^2$  of 0.88.

**Statistical analysis.** Associations between plasma fetuin-A levels and selected diabetes risk factors were examined in the subcohort using an age-adjusted Pearson partial correlation coefficient. Fetuin-A levels were categorized into quintiles based on subcohort participants. Hazard ratios as a measure of relative risk (RR) were computed using a weighted Cox propor-

tional hazards model, modified for the case-cohort design according to the Prentice method (16). Age was the underlying time variable in the counting processes, with entry defined as the subjects' age at the time of recruitment and exit defined as age at the diagnosis of diabetes, or censoring. We computed age-adjusted RRs for each quintile of fetuin-A compared with the lowest quintile. The significance of linear trends across quintiles of fetuin-A was tested by assigning each participant the median value for the quintile and modeling this value as a continuous variable. Because this analysis indicated no departure from linearity, we considered fetuin-A as continuous variable estimating the RR associated with an increment of 10  $\mu\text{g/ml}$  or per 1 SD in all further analyses. We used information on covariates obtained from the baseline examination in multivariate analyses, including sex, BMI (continuous), waist circumference (continuous), education (in or no training, vocational training, technical school, or technical college or university degree), occupational activity (light, moderate, or heavy), sports activity (0, 0.1–4, or  $>4$  h/week), cycling (0, 0.1–2.4, 2.5–4.9, or  $\geq 5$  h/week), smoking (never, past, or current  $<20$  cigarettes/day or current  $\geq 20$  cigarettes/day), and alcohol intake (0, 0.1–5, 5.1–10, 10.1–20, 20.1–40, or  $>40$  g/day). We furthermore examined the impact of potential intermediate biomarkers by adding log-transformed HDL cholesterol, glucose, triglyceride, A1C,  $\gamma$ -glutamyltransferase, and CRP levels as continuous variables to our models.

For stratified analysis, we also calculated the multivariable-adjusted RR associated with a difference in fetuin-A by 1 SD according to sex, fasting status, the presence of abdominal obesity (waist  $\geq 102$  cm in men and  $\geq 88$  cm in women) and elevated blood glucose ( $\geq 100$  mg/dl). We tested interactions between fetuin-A levels and subgroups by evaluating the significance of cross-product terms.

All statistical analyses were performed with SAS release 9.1 (SAS Institute, Cary, NC). All *P* values presented are two-tailed; *P* < 0.05 was considered statistically significant.

## RESULTS

Baseline characteristics and metabolic traits across quintiles of fetuin-A of the random subcohort are presented in Table 1. Participants with higher fetuin-A concentrations were younger, were less likely to be men, and drank smaller amounts of alcohol compared with participants with lower fetuin-A concentrations. Supplementary Fig. 1 shows the frequency distribution for men and women across the range of plasma fetuin-A levels (14–442  $\mu\text{g/ml}$  [mean  $\pm$  SD 129  $\pm$  53  $\mu\text{g/ml}$ ]).

We next examined the association of fetuin-A levels with selected risk factors for type 2 diabetes (Table 2). After adjustment for age, fetuin-A was significantly positively correlated with fasting glucose, fasting triglycerides, HDL cholesterol,  $\gamma$ -glutamyltransferase, high-sensitivity C-

TABLE 2

Age-adjusted Pearson partial correlation coefficients between plasma fetuin-A levels and selected risk factors, EPIC-Potsdam Study, 819 men and 1,345 women

Risk factors	<i>r</i>	<i>P</i> value
Waist circumference	0.025	0.247
Random plasma glucose	0.039	0.068
Fasting plasma glucose*	0.098	0.015
Triglycerides	0.041	0.058
Fasting triglycerides*	0.093	0.021
HDL cholesterol	0.086	<0.001
$\gamma$ -Glutamyltransferase	0.063	0.004
hs-CRP	0.122	<0.001
A1C	0.049	0.024

\*In the random subcohort, 246 men and 376 women did not eat for at least 8 h before blood drawing.

reactive protein (hs-CRP), and A1C; however, correlation coefficients were overall weak.

Figure 1 presents the age-adjusted RRs of type 2 diabetes for quintiles of fetuin-A. Participants in the highest quintile of fetuin-A levels had a significantly increased risk of diabetes compared with the lowest quintile (RR 1.75 [95% CI 1.32–2.31]; *P* for trend <0.0001). Because there was no indication of nonlinearity and fetuin-A levels were approximately normally distributed, we considered fetuin-A as continuous variable on its natural scale in further analyses. Table 3 shows the estimated RRs of type 2 per 10  $\mu\text{g/ml}$  fetuin-A levels at baseline for all subjects and according to fasting status. After adjustment for age, fetuin-A levels were significantly associated with increased risk of diabetes (1.04 [1.03–1.06]) among all participants. This association was similar after adjustment for sex, BMI, and waist circumference (1.04 [1.02–1.06]) and also after further adjustment for lifestyle risk factors (1.03 [1.01–1.06]) and remained significant. The association became slightly stronger after adjustment for glucose, triglycerides, HDL cholesterol, A1C,  $\gamma$ -glutamyltransferase, and hs-CRP (1.05 [1.02–1.07]). The association between fetuin-A and type 2 diabetes risk appeared to be somewhat stronger among fasting subjects (RR full adjusted model 1.09 [1.04–1.13]) compared with nonfasting subjects (1.04 [1.01–1.07]).

Figure 2 shows the multivariable-adjusted RR of type 2

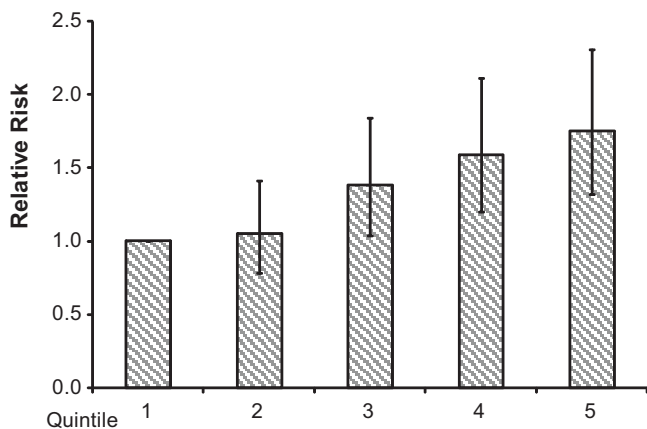


FIG. 1. Age-adjusted RR of type 2 diabetes by quintiles of plasma fetuin-A ( $\mu\text{g/ml}$ ) among men and women in the EPIC-Potsdam Study. *P* for trend <0.001. Medians (ranges) for quintiles are as follows: quintile 1, 162  $\mu\text{g/ml}$  (14–184); quintile 2, 202  $\mu\text{g/ml}$  (185–214); quintile 3, 227  $\mu\text{g/ml}$  (215–240); quintile 4, 255  $\mu\text{g/ml}$  (241–271); quintile 5, 295  $\mu\text{g/ml}$  (272–442).

diabetes for 1 SD of fetuin-A per 1 SD with different adjustment for biochemical variables. The RR adjusted for age, sex, and anthropometric and lifestyle characteristics was 1.19 (95% CI 1.06–1.33). Adjustment for HDL cholesterol, triglycerides, glucose, A1C,  $\gamma$ -glutamyltransferase, or hs-CRP or mutual adjustment for all these biomarkers did not appreciably affect this result (RR for full adjusted model 1.28 [95% CI 1.13–1.46]). Similarly, adjustment for other biomarkers did not alter the observed association among fasted or nonfasted subjects (data not shown).

We next evaluated the associations between fetuin-A and the risk of type 2 diabetes in several subgroups (Fig. 3). The associations appeared to be stronger in men compared with women and among fasted compared with nonfasted participants. However, the tests for interactions were not significant. Similar associations were observable across strata of abdominal obesity. In contrast, glucose levels modified the association between fetuin-A levels and diabetes risk with a strong association observable among participants with elevated glucose (RR for 1 SD 1.62 [95% CI 1.31–2.00]), whereas there was no significant association among participants with normal glucose values (*P* value for interaction 0.023).

We repeated our analyses excluding all incident case subjects who were identified within the first 2 years of follow-up ( $n = 163$ ). Fetuin-A remained positively associated with diabetes risk (RR for 1 SD 1.17 [95% CI 1.03–1.34]). In a further sensitivity analysis, we evaluated whether storage time had a potentially impact on our observation. Blood samples were stored on average 11.2 years (range 9.2–13.3 years) before fetuin-A measurement in December 2007. Fetuin-A was similarly positively associated among participants with blood storage time <11 years (RR for 1 SD 1.34 [1.08–1.65]) and those with storage time greater or equal 11 years (1.32 [1.12–1.54]).

## DISCUSSION

Animal and human studies suggest that the protein fetuin-A induces insulin resistance (7–12), thus supporting the hypothesis that fetuin-A may also play a role in the pathophysiology of type 2 diabetes. To our knowledge, our study is the first to show that high plasma fetuin-A levels at baseline predicted the incidence of type 2 diabetes. This relationship remained statistically significant after adjustment for established risk factors of type 2 diabetes, such as sex, age, BMI, waist circumference, glucose, triglyceride, HDL cholesterol, A1C,  $\gamma$ -glutamyltransferase, and hs-CRP. Our findings, therefore, strongly indicate that fetuin-A independently predicts the risk of type 2 diabetes.

For a long time after its discovery, fetuin-A was considered to primarily play a role in the protection from vascular calcification by keeping calcium and phosphorus solubilized in serum (17). Besides these specific effects on the hydroxyapatite deposition in vessel walls, a new mechanism of fetuin-A action was detected. In a large study in humans, high serum fetuin-A levels were found to be positively associated with the metabolic syndrome and subclinical inflammation, suggesting that fetuin-A may be causally involved in the pathophysiology of these conditions (18). In agreement with that study, we found that fetuin-A levels correlated positively with hs-CRP levels, and extended the information on fetuin-A action by showing that fetuin-A promotes cytokine expression in monocytes and adipocytes and represses the production of the insulin-sensitizing adipokine adiponectin (19). Further

TABLE 3  
RR of type 2 diabetes for plasma fetuin-A (per 10  $\mu\text{g/ml}$ ) among men and women in the EPIC-Potsdam Study

Model	All subjects	Fasting subjects	Nonfasting subjects
Age adjusted	1.04 (1.03–1.06)	1.06 (1.03–1.10)	1.03 (1.01–1.05)
Adjusted for age, sex, BMI, and waist circumference	1.04 (1.02–1.06)	1.07 (1.03–1.11)	1.03 (1.00–1.05)
Multivariate adjusted*	1.03 (1.01–1.06)	1.08 (1.04–1.12)	1.02 (1.00–1.05)
Further adjustment for HDL cholesterol, triglycerides, glucose, A1C, $\gamma$ -glutamyltransferase, and hs-CRP†	1.05 (1.02–1.07)	1.09 (1.04–1.13)	1.04 (1.01–1.07)

Data are RR (95% CI). \*Adjusted for age, sex, BMI, waist circumference, education (in or no training, vocational training, technical school, or technical college or university degree), occupational activity (light, moderate, or heavy), sport activity (0, 0.1–4, or >4.0 h/week), cycling (0, 0.1–2.4, 2.5–4.9, or  $\geq 5$  h/week), smoking (never, past, or current <20 cigarettes/day or current  $\geq 20$  cigarettes/day), and alcohol intake (0, 0.1–5, 5.1–10, 10.1–20, 20.1–40, or >40 g/day). †HDL cholesterol, triglycerides, glucose, A1C,  $\gamma$ -glutamyltransferase, and hs-CRP were log transformed.

support for a potential role of fetuin-A in the regulation of glucose and lipid metabolism is given by the fact that the gene encoding fetuin-A is located on chromosome 3q27, the chromosomal region that was previously mapped as a type 2 diabetes and metabolic syndrome susceptibility locus (20). The aforementioned findings and the animal studies showing that fetuin-A induces insulin resistance (7–10) resulted in the view that fetuin-A is an interesting candidate involved in the pathophysiology of type 2 diabetes. Genetic analyses revealing that single nucleotide

polymorphisms in the fetuin-A gene were associated with type 2 diabetes in cross-sectional studies (21) further corroborated this hypothesis. However, the role of fetuin-A in the natural history of type 2 diabetes still remained obscure. Fetuin-A, besides the placenta, is ex-

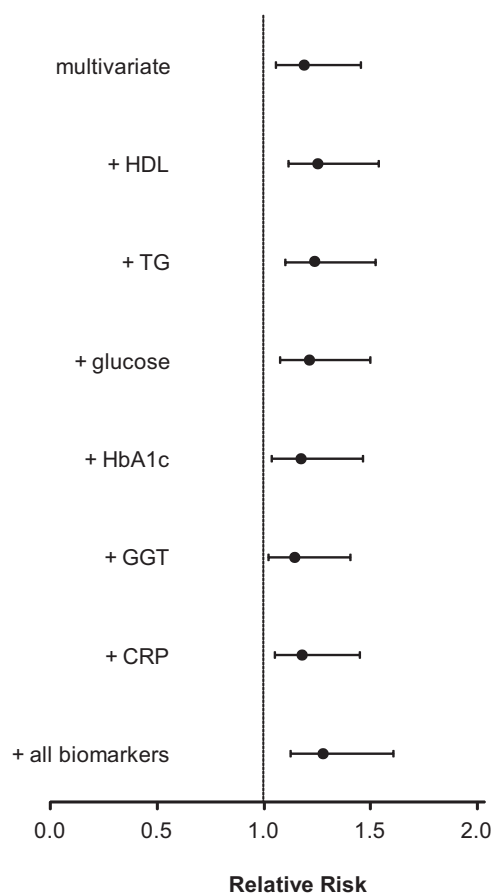


FIG. 2. RR of type 2 diabetes per 1 SD of plasma fetuin-A with varying adjustment for metabolic risk markers among men and women in the EPIC-Potsdam Study. RRs were adjusted for age, sex, BMI, waist circumference, education (in or no training, vocational training, technical school, or technical college or university degree), occupational activity (light, moderate, or heavy), sport activity (0, 0.1–4, or >4 h/week), cycling (0, 0.1–2.4, 2.5–4.9, or  $\geq 5$  h/week), smoking (never, past, or current <20 cigarettes/day or current  $\geq 20$  cigarettes/day), and alcohol intake (0, 0.1–5, 5.1–10, 10.1–20, 20.1–40, or >40 g/day).

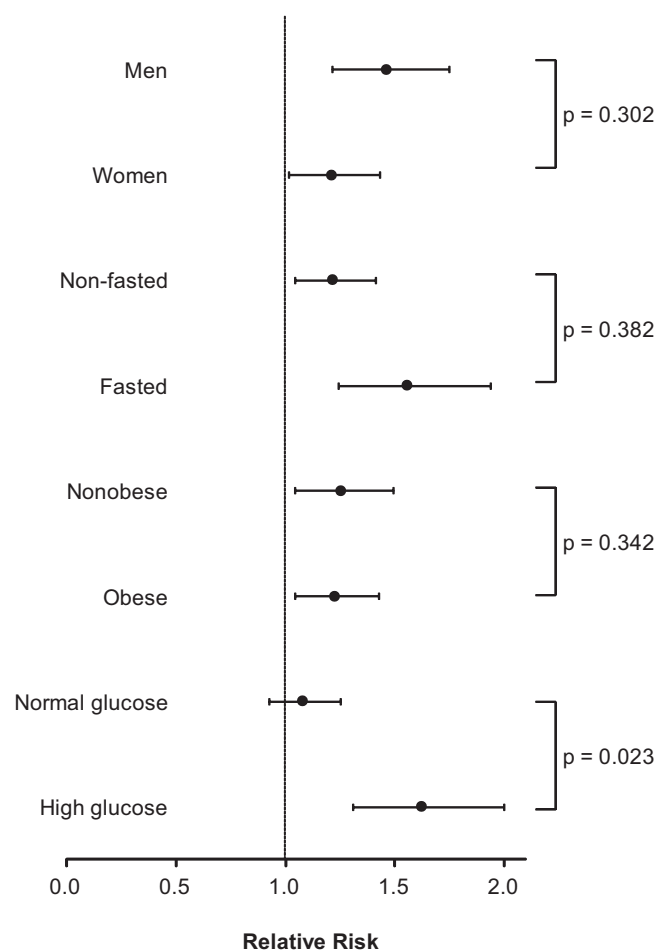
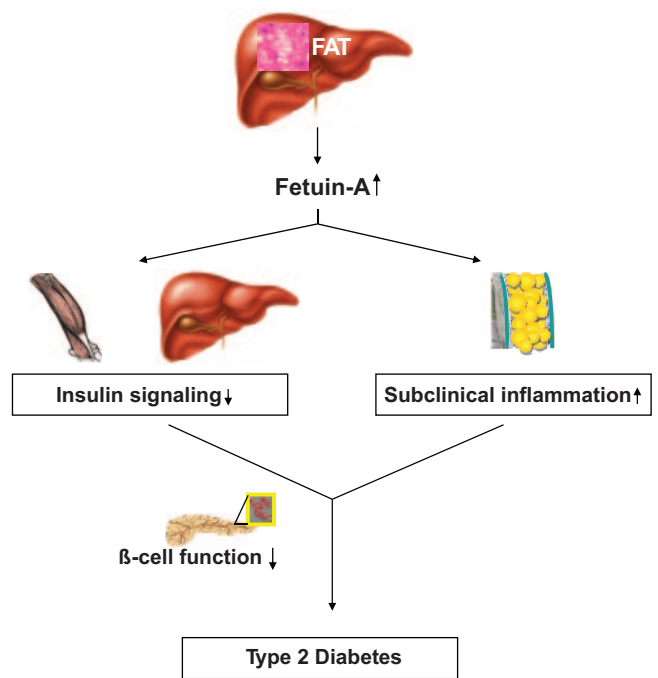


FIG. 3. RR of type 2 diabetes per 1 SD of plasma fetuin-A for subgroups of sex, fasting status, abdominal obesity, and glucose levels in the EPIC-Potsdam Study. RRs were adjusted for age, sex, BMI, waist circumference, education (in or no training, vocational training, technical school, or technical college or university degree), occupational activity (light, moderate, or heavy), sport activity (0, 0.1–4, or >4 h/week), cycling (0, 0.1–2.4, 2.5–4.9, or  $\geq 5$  h/week), smoking (never, past, or current <20 cigarettes/day or current  $\geq 20$  cigarettes/day), and alcohol intake (0, 0.1–5, 5.1–10, 10.1–20, 20.1–40, or >40 g/day), HDL cholesterol, triglycerides, glucose, A1C,  $\gamma$ -glutamyltransferase, and hs-CRP (all log transformed). Abdominal obesity was defined as waist  $\geq 102$  cm among men or  $\geq 88$  cm among women. High glucose was defined as  $\geq 100$  mg/dl.

clusively secreted from the liver (22). Expression of fetuin-A and plasma levels of the protein were found to be increased when there is fat accumulation in the liver (11,23) and circulating fetuin-A is increased in the metabolic syndrome (18), the condition that strongly associates with fatty liver (24). Based on these data and on the observation that fatty liver strongly predicts type 2 diabetes (25), the present findings suggest that fetuin-A may be a mediator of fatty liver-induced type 2 diabetes. In agreement with the latter hypothesis, we found that plasma fetuin-A levels in our study also correlated positively with the plasma  $\gamma$ -glutamyltransferase level, which is considered a weak surrogate marker of fatty liver (26). However, fetuin-A remained significantly associated with diabetes risk even after adjustment for  $\gamma$ -glutamyltransferase. Still, we were not able to adjust for more precise measures of liver fat, e.g., by localized proton magnetic resonance spectroscopy (11,24), and thus were not able to clarify the extent to which the risk associated with fetuin-A is explainable by liver fat content. If our hypothesis can be further substantiated by future studies, then fetuin-A, similar to the adipokines secreted from adipose tissue (27), may represent the first identified factor among other, yet-unknown secreted proteins from the liver (hepatokines), which regulate insulin signaling in insulin-sensitive tissues. Finally, whether fetuin-A also affects insulin secretory function of the  $\beta$ -cells and thereby influences the incidence of type 2 diabetes remains to be investigated.

Interestingly, the association between circulating fetuin-A and type 2 diabetes was modified by the existence of elevated glucose levels. A positive association was observed among participants with elevated plasma glucose levels within the nondiabetic range, whereas fetuin-A was not associated with diabetes risk among participants with normal glucose levels. Fasting hyperglycemia largely results from impaired function of the  $\beta$ -cells to secrete insulin, the major factor involved in the pathogenesis of type 2 diabetes (28). Our findings therefore support that fetuin-A itself or fetuin-A-induced insulin resistance may lead to a deterioration of insulin secretion and ultimately to a decompensation of glucose homeostasis, particularly in subjects who already display impaired  $\beta$ -cell function (Fig. 4). Thus, measurement of plasma fetuin-A may be particularly important for the evaluation of the individual risk of type 2 diabetes in these individuals who already have a high risk for the disease. Conversely, adequate  $\beta$ -cell function may protect individuals who are characterized by normal fasting glycemia from the detrimental effects of higher fetuin-A levels.

Some possible limitations of our findings must be considered. All potential cases in our study were verified by a physician. Although we considered only clinically apparent type 2 diabetes and did not screen our study population during follow-up, we excluded participants with plasma glucose values within the diabetic range at baseline, and fetuin-A remained positively associated with diabetes risk after exclusion of case subjects diagnosed within the first 2 years of follow-up. Thus, it is unlikely that prevalent but undiagnosed cases of diabetes remained in our analyses. The potential of residual confounding applies to our study as it does to observational studies in general. We adjusted for a large variety of known risk factors, among them age, sex, anthropometry, alcohol consumption, activity patterns, and metabolic risk markers. Although fetuin-A remained significantly associated with diabetes risk, we cannot rule out that other unmea-



**FIG. 4.** Schematic overview of the effects of circulating fetuin-A on target tissues. Increase in obesity, particularly in visceral fat mass, results in an increase of liver fat. By yet-unknown mechanisms, this is associated with increased production of fetuin-A (11,23). Elevated circulating fetuin-A directly inhibits insulin signaling in muscle and liver (7–9) and results in systemic subclinical and adipose tissue inflammation (19). Under a normal  $\beta$ -cell function, fetuin-A-induced insulin resistance and effects of subclinical inflammation on the  $\beta$ -cells may be compensated; however, the existence of impaired  $\beta$ -cell function results in fetuin-A-induced type 2 diabetes.

sured factors or that imprecision in the measurement of covariates explain this observation. Also, we only had a single blood drawing, which might have introduced random measurement errors in determining fetuin-A and other biochemical variables. The lack of repeated measurements may have led to an underestimation of the observed associations. Most participants in our study were nonfasted at blood drawing. Although statistically not significantly different, the association between fetuin-A and diabetes risk appeared to be stronger among fasted individuals compared with nonfasted. Fasted subjects were on average 2 years older than nonfasted participants and slightly more likely to be men (40 vs. 37%). Given the higher incidence rates observed in our study for men compared with women and with increasing age (29), a higher baseline risk among fasted participants might therefore be an explanation for the difference. Finally, because of the observational design of our study, we cannot unequivocally prove whether the relationship between circulating fetuin-A levels and type 2 diabetes risk is causal.

In conclusion, our finding that high plasma fetuin-A levels predict the incidence of type 2 diabetes independently of other established risk factors supports the hypothesis that fetuin-A may play a role in the development of type 2 diabetes.

#### ACKNOWLEDGMENTS

The recruitment phase of the EPIC-Potsdam Study was supported by the Federal Ministry of Science, Germany (01 EA 9401), and the European Union (SOC 95201408 05F02). The follow-up of the EPIC-Potsdam Study was

supported by the German Cancer Aid (70–2488-Ha I) and the European Community (SOC 98200769 05F02). The study was also supported by a grant from the German Research Foundation (KFO 114) and the Heisenberg Grant to N.S. (STE 1096/1-1).

We gratefully acknowledge the excellent technical assistance of Anna Bury, Sabina Herbert, Albrecht Pfäfflin, and Ingo Besenthal, who were involved in the biochemical analyses.

## REFERENCES

- Olshansky SJ, Passaro DJ, Hershov RC, Layden J, Carnes BA, Brody J, Hayflick L, Butler RN, Allison DB, Ludwig DS: A potential decline in life expectancy in the United States in the 21st century. *N Engl J Med* 352:1138–1145, 2005
- Stumvoll M, Goldstein BJ, van Haeften TW: Type 2 diabetes: principles of pathogenesis and therapy. *Lancet* 365:1333–1346, 2005
- Spranger J, Kroke A, Mhlig M, Bergmann MM, Ristow M, Boeing H, Pfeiffer AF: Adiponectin and protection against type 2 diabetes mellitus. *Lancet* 361:226–228, 2003
- Lindsay RS, Funahashi T, Hanson RL, Matsuzawa Y, Tanaka S, Tataranni PA, Knowler WC, Krakoff J: Adiponectin and development of type 2 diabetes in the Pima Indian population. *Lancet* 360:57–58, 2002
- Yang Q, Graham TE, Mody N, Preitner F, Peroni OD, Zabolotny JM, Kotani K, Quadro L, Kahn BB: Serum retinol binding protein 4 contributes to insulin resistance in obesity and type 2 diabetes. *Nature* 436:356–362, 2005
- Graham TE, Yang Q, Bluher M, Hammarstedt A, Ciaraldi TP, Henry RR, Wason CJ, Oberbach A, Jansson PA, Smith U, Kahn BB: Retinol-binding protein 4 and insulin resistance in lean, obese, and diabetic subjects. *N Engl J Med* 354:2552–2563, 2006
- Auberger P, Falquerho L, Contreres JO, Pages G, Le Cam G, Rossi B, Le Cam A: Characterization of a natural inhibitor of the insulin receptor tyrosine kinase: cDNA cloning, purification, and anti-mitogenic activity. *Cell* 58:631–640, 1989
- Mathews ST, Chellam N, Srinivas PR, Cintron VJ, Leon MA, Goustin AS, Grunberger G: Alpha2-HSG, a specific inhibitor of insulin receptor autophosphorylation, interacts with the insulin receptor. *Mol Cell Endocrinol* 164:87–98, 2000
- Rauth G, Poschke O, Fink E, Eulitz M, Tippmer S, Kellerer M, Haring HU, Nawratil P, Haasemann M, Jahnen-Dechent W, Müller-Esterl W: The nucleotide and partial amino acid sequences of rat fetuin: identity with the natural tyrosine kinase inhibitor of the rat insulin receptor. *Eur J Biochem* 204:523–529, 1992
- Mathews ST, Singh GP, Ranalletta M, Cintron VJ, Qiang X, Goustin AS, Jen KL, Charron MJ, Jahnen-Dechent W, Grunberger G: Improved insulin sensitivity and resistance to weight gain in mice null for the Ahsg gene. *Diabetes* 51:2450–2458, 2002
- Stefan N, Hennige AM, Staiger H, Machann J, Schick F, Krober SM, Machicao F, Fritsche A, Haring HU:  $\alpha$ 2-Heremans-Schmid glycoprotein/fetuin-A is associated with insulin resistance and fat accumulation in the liver in humans. *Diabetes Care* 29:853–857, 2006
- Mori K, Emoto M, Yokoyama H, Araki T, Teramura M, Koyama H, Shoji T, Inaba M, Nishizawa Y: Association of serum fetuin-A with insulin resistance in type 2 diabetic and nondiabetic subjects. *Diabetes Care* 29:468, 2006
- Boeing H, Wahrendorf J, Becker N: EPIC-Germany: a source for studies into diet and risk of chronic diseases. *Ann Nutr Metab* 43:195–204, 1999
- Prentice RL: A case-cohort design for epidemiologic cohort studies and disease prevention trials. *Biometrika* 73:1–11, 1986
- Rundle AG, Vineis P, Ahsan H: Design options for molecular epidemiology research within cohort studies. *Cancer Epidemiol Biomarkers Prev* 14:1899–1907, 2005
- Barlow WE, Ichikawa L, Rosner D, Izumi S: Analysis of case-cohort designs. *J Clin Epidemiol* 52:1165–1172, 1999
- Ketteler M, Bongartz P, Westenfeld R, Wildberger JE, Mahnken AH, Bohm R, Metzger T, Wanner C, Jahnen-Dechent W, Floege J: Association of low fetuin-A (AHSG) concentrations in serum with cardiovascular mortality in patients on dialysis: a cross-sectional study. *Lancet* 361:827–833, 2003
- Ix JH, Shlipak MG, Brandenburg VM, Ali S, Ketteler M, Whooley MA: Association between human fetuin-A and the metabolic syndrome: data from the Heart and Soul Study. *Circulation* 113:1760–1767, 2006
- Hennige AM, Staiger H, Wicke C, Machicao F, Fritsche A, Haring HU, Stefan N: Fetuin-A induces cytokine expression and suppresses adiponectin production. *PLoS ONE* 3: e1765, 2008
- Vionnet N, Hani EH, Dupont S, Gallina S, Francke S, Dotte S, De Matos F, Durand E, Lepretre F, Lecoeur C, Gallina P, Zekiri L, Dina C, Froguel P: Genomewide search for type 2 diabetes-susceptibility genes in French whites: evidence for a novel susceptibility locus for early-onset diabetes on chromosome 3q27-qter and independent replication of a type 2-diabetes locus on chromosome 1q21–q24. *Am J Hum Genet* 67:1470–1480, 2000
- Siddiq A, Lepretre F, Hercberg S, Froguel P, Gibson F: A synonymous coding polymorphism in the  $\alpha$ 2-Heremans-Schmid glycoprotein gene is associated with type 2 diabetes in French Caucasians. *Diabetes* 54:2477–2481, 2005
- Denecke B, Graber S, Schafer C, Heiss A, Woltje M, Jahnen-Dechent W: Tissue distribution and activity testing suggest a similar but not identical function of fetuin-B and fetuin-A. *Biochem J* 376:135–145, 2003
- Lin X, Braymer HD, Bray GA, York DA: Differential expression of insulin receptor tyrosine kinase inhibitor (fetuin) gene in a model of diet-induced obesity. *Life Sci* 63:145–153, 1998
- Kotronen A, Yki-Jarvinen H: Fatty liver: a novel component of the metabolic syndrome. *Arterioscler Thromb Vasc Biol* 28:27–38, 2008
- Shibata M, Kihara Y, Taguchi M, Tashiro M, Otsuki M: Nonalcoholic fatty liver disease is a risk factor for type 2 diabetes in middle-aged Japanese men. *Diabetes Care* 30:2940–2944, 2007
- Angulo P: Nonalcoholic fatty liver disease. *N Engl J Med* 346:1221–1231, 2002
- Trujillo ME, Scherer PE: Adipose tissue-derived factors: impact on health and disease. *Endocr Rev* 27:762–778, 2006
- Gerich JE: The genetic basis of type 2 diabetes mellitus: impaired insulin secretion versus impaired insulin sensitivity. *Endocr Rev* 19:491–503, 1998
- Schulze MB, Schulz M, Heidemann C, Schienkiewitz A, Hoffmann K, Boeing H: Carbohydrate intake and incidence of type 2 diabetes in the European Prospective Investigation into Cancer and Nutrition (EPIC)-Potsdam Study. *Br J Nutr* 99:1107–1116, 2008