

# Dysregulation of the Peripheral and Adipose Tissue Endocannabinoid System in Human Abdominal Obesity

Matthias Blüher,<sup>1</sup> Stefan Engeli,<sup>2</sup> Nora Klötting,<sup>1</sup> Janin Berndt,<sup>1</sup> Mathias Fasshauer,<sup>1</sup> Sándor Bátkai,<sup>3</sup> Pál Pacher,<sup>3</sup> Michael R. Schön,<sup>4</sup> Jens Jordan,<sup>2</sup> and Michael Stumvoll<sup>1</sup>

The endocannabinoid system has been suspected to contribute to the association of visceral fat accumulation with metabolic diseases. We determined whether circulating endocannabinoids are related to visceral adipose tissue mass in lean, subcutaneous obese, and visceral obese subjects (10 men and 10 women in each group). We further measured expression of the cannabinoid type 1 ( $CB_1$ ) receptor and fatty acid amide hydrolase ( $FAAH$ ) genes in paired samples of subcutaneous and visceral adipose tissue in all 60 subjects. Circulating 2-arachidonoyl glycerol (2-AG) was significantly correlated with body fat ( $r = 0.45$ ,  $P = 0.03$ ), visceral fat mass ( $r = 0.44$ ,  $P = 0.003$ ), and fasting plasma insulin concentrations ( $r = 0.41$ ,  $P = 0.001$ ) but negatively correlated to glucose infusion rate during clamp ( $r = 0.39$ ,  $P = 0.009$ ). In visceral adipose tissue,  $CB_1$  mRNA expression was negatively correlated with visceral fat mass ( $r = 0.32$ ,  $P = 0.01$ ), fasting insulin ( $r = 0.48$ ,  $P < 0.001$ ), and circulating 2-AG ( $r = 0.5$ ,  $P < 0.001$ ), whereas  $FAAH$  gene expression was negatively correlated with visceral fat mass ( $r = 0.39$ ,  $P = 0.01$ ) and circulating 2-AG ( $r = 0.77$ ,  $P < 0.001$ ). Our findings suggest that abdominal fat accumulation is a critical correlate of the dysregulation of the peripheral endocannabinoid system in human obesity. Thus, the endocannabinoid system may represent a primary target for the treatment of abdominal obesity and associated metabolic changes. *Diabetes* 55:3053–3060, 2006

Endocannabinoids are lipid mediators derived from membrane phospholipids or triglycerides with complex effects on body weight and metabolic regulation (1,2). Several enzymes are involved in the synthesis and degradation of the two most important endocannabinoids, anandamide and 2-arachidonoyl glycerol (2-AG). At least two G-protein-coupled

cannabinoid receptors ( $CB_1$  and  $CB_2$ ) have been identified (3,4). Activation of central  $CB_1$  receptors clearly promotes food intake and weight gain (5–7). However, pharmacological blockade with rimonabant (SR141716) or genetic knockout of the  $CB_1$  receptor demonstrated that weight reduction under these conditions is only partly promoted by decreased food intake (8–10). These findings prompted the search for peripheral metabolic effects of endocannabinoids.  $CB_1$  receptors have now been identified in rodent liver (11), skeletal muscle (12), adipocytes (9,13), and pancreas (14). The potential role of peripheral  $CB_1$  receptors for metabolic regulation is further promoted by statistical analyses of clinical trials, suggesting that the influence of  $CB_1$  receptor blockade on adiponectin levels, lipids, and glucose homeostasis goes beyond the effect of weight loss alone (15–17).

In general, endocannabinoid formation and signaling is dependent on external stimuli such as cellular stress, tissue damage, or metabolic challenges (3,4). However, recent findings point to profound changes in the regulation of the endocannabinoid system in obesity. Experimental data suggest that the endocannabinoid system is chronically activated in obesity or after high-fat feeding, both in the brain and in peripheral organs (18–20). Increased dietary supply of fatty acids, serving as endocannabinoid precursors, may be a possible mechanism, but decreased enzymatic degradation by the fatty acid amide hydrolase ( $FAAH$ ) has been described in the liver of diet-induced obese mice (11). Recently, increased circulating levels of endocannabinoids and downregulation of subcutaneous adipose  $CB_1$  and  $FAAH$  gene expression in obese postmenopausal women were described (21). To better define the changes of endocannabinoid system regulation in human obesity, we determined whether elevated circulating endocannabinoids are related to visceral adipose tissue accumulation in 60 men and women with a wide range of obesity, fat distribution, insulin sensitivity, and glucose tolerance. We also measured expression of the  $CB_1$  and  $FAAH$  genes in paired samples of subcutaneous and visceral adipose tissue.

## RESEARCH DESIGN AND METHODS

Paired samples of visceral and subcutaneous adipose tissue were obtained from 60 Caucasian men ( $n = 30$ ) and women ( $n = 30$ ) who underwent open abdominal surgery for gastric banding, cholecystectomy, appendectomy, abdominal injuries, or explorative laparotomy and were immediately frozen in liquid nitrogen after explantation. Type 2 diabetes and severe conditions including generalized inflammation or end-stage malignant diseases were exclusion criteria. Fourteen subjects (3 in the lean, 5 in the subcutaneous obese, and 6 in the visceral obese group) were treated with statins for dyslipidemia. Fifteen subjects (8 in the subcutaneous obese and 7 in the visceral obese group) received  $\beta$ -blockers ( $n = 7$ ), ACE inhibitors ( $n = 8$ ),

From the <sup>1</sup>Department of Internal Medicine III, University of Leipzig, Leipzig, Germany; the <sup>2</sup>Franz-Volhard Clinical Research Center, Charité Campus Buch, HELIOS Klinikum Berlin, and Max-Delbrück Center for Molecular Medicine, Berlin, Germany; the <sup>3</sup>Laboratory of Physiologic Studies, National Institute on Alcohol Abuse and Alcoholism, National Institutes of Health, Bethesda, Maryland; and the <sup>4</sup>Department of Surgery, University of Leipzig, Leipzig, Germany.

Address correspondence and reprint requests to Michael Stumvoll, MD, University of Leipzig, Medical Department III, Philipp-Rosenthal-Str. 27, 04103 Leipzig, Germany. E-mail: michael.stumvoll@medizin.uni-leipzig.de.

Received for publication 14 June 2006 and accepted in revised form 16 August 2006.

M.B. and S.E. contributed equally to this work.  
2-AG, 2-arachidonoyl glycerol; OGTT, oral glucose tolerance test; SREBP-1c, sterol regulatory element-binding protein 1c.

DOI: 10.2337/db06-0812

© 2006 by the American Diabetes Association.

The costs of publication of this article were defrayed in part by the payment of page charges. This article must therefore be hereby marked "advertisement" in accordance with 18 U.S.C. Section 1734 solely to indicate this fact.

TABLE 1  
Clinical and biochemical characteristics of the study group (n = 60)

	Lean		Subcutaneous obese		Visceral obese	
	Male	Female	Male	Female	Male	Female
n	10	10	10	10	10	10
Age (years)	48 ± 13	43 ± 14	58 ± 11	53 ± 15*	55 ± 7†	69 ± 13‡
BMI (kg/m <sup>2</sup> )	25 ± 2§	24 ± 1§	36 ± 7	34 ± 8	35 ± 7‡	34 ± 7‡
Waist circumference (cm)	87 ± 1.3†	69.5 ± 3.1§	140 ± 5.6	132.3 ± 4.9	138.4 ± 5.4‡	129.4 ± 4.5‡
Body fat (%)	22 ± 4§	23 ± 3§	43 ± 10	41 ± 9	35 ± 6‡	33 ± 7‡
HbA <sub>1c</sub> (%)	5.2 ± 0.1§	5.3 ± 0.2§	5.5 ± 0.2	6.0 ± 0.8	6.0 ± 0.7‡	5.8 ± 0.5‡
Subcutaneous abdominal fat area (cm <sup>2</sup> )	78.7 ± 9.5†§	46.8 ± 11.1†§	1,020 ± 103.7	525 ± 42.7	512 ± 33.1‡	334 ± 41.7‡
Visceral abdominal fat area (cm <sup>2</sup> )	62.4 ± 9.5†§	39.3 ± 7.4†§	178 ± 28.5	128 ± 19.3	331 ± 41.9‡	248 ± 27.6‡
fasting plasma glucose (mmol/l)	5.3 ± 0.3	5.4 ± 0.4	5.2 ± 0.6	6.6 ± 2.4	5.9 ± 1.2	5.6 ± 0.8
Fasting plasma insulin (pmol/l)	27 ± 8§	25 ± 12	108 ± 115†	227 ± 88	185 ± 103‡	166 ± 115‡
2-h OGTT plasma glucose (mmol/l)	6.1 ± 0.7	6.0 ± 0.5	6.6 ± 1.5	7.6 ± 3.4	7.4 ± 1.9	7.9 ± 2.7
GIR (ml/h)	94 ± 8	93 ± 14§	87 ± 9*†	40 ± 21	42 ± 22	48 ± 29‡
Free fatty acid (mmol/l)	0.38 ± 0.21	0.33 ± 0.13	0.45 ± 0.32	0.64 ± 0.27	0.73 ± 0.31‡	0.67 ± 0.15‡
Total cholesterol (mg/dl)	200 ± 30	221 ± 56	189 ± 26*	203 ± 29	219 ± 34	225 ± 30
HDL cholesterol (mg/dl)	55 ± 9	64 ± 17	50 ± 12	56 ± 14	45 ± 11	54 ± 8
Triglycerides (mg/dl)	221.4 ± 12.5	205.5 ± 15.3	250.8 ± 19.2	195.6 ± 24.9	246.9 ± 31.5	248.6 ± 18.1
Total-to-HDL cholesterol ratio	3.49 ± 0.7	3.38 ± 0.4	3.81 ± 0.35	3.53 ± 0.24	4.88 ± 0.44	4.21 ± 0.38
Adiponectin (μg/dl)	8.7 ± 3.4	9.0 ± 4.2	6.5 ± 2.4*	5.3 ± 2.7	3.5 ± 2.0‡	5.6 ± 3.8
Leptin (pmol/l)	2.3 ± 1.3†§	11.8 ± 4.9§	19.4 ± 8.8†	35.0 ± 12.8	18.8 ± 10.9†‡	32.8 ± 8.5‡
Interleukin-6 (pg/ml)	0.45 ± 0.12	0.61 ± 0.33§	2.22 ± 1.78*	3.87 ± 1.91	2.94 ± 1.96	4.67 ± 2.02‡

Data are means ± SE. Group comparisons by Student's *t* test. \**P* < 0.05 for visceral obese vs. subcutaneous obese group; †*P* < 0.05 between males and females in each group; ‡*P* < 0.05 for visceral obese vs. lean group; §*P* < 0.05 for subcutaneous obese group vs. lean group (all comparison in the same sex only). GIR, glucose infusion rate during the steady state of a euglycemic-hyperinsulinemic clamp.

diuretics (n = 8), or angiotensin-1 receptor blockers (n = 4) either as single or combination therapy for the treatment of hypertension. Dyslipidemic or hypertensive patients had to be on stable medication for at least 2 months before inclusion. All subjects had a stable weight with fluctuations <2% of the body weight for at least 3 months before surgery. The study was approved by the ethics committee of the University of Leipzig. All subjects gave written informed consent before taking part in the study.

BMI was calculated as weight in kilograms divided by the square of height in meters. Waist circumference was measured in the standing position in the midline between the iliac crest and the lowest rib. Percentage body fat was measured by dual X-ray absorptiometry. To determine visceral and subcutaneous abdominal adipose tissue areas, computed tomography scans were taken at the L4–L5 level of the lumbar spine with an attenuation range of –30 to –190 Hounsfield units. Using a combination of BMI and the visceral fat-to-subcutaneous fat ratio, we stratified the participants into one lean (BMI <25 kg/m<sup>2</sup>; n = 20) and two obese (BMI >30 kg/m<sup>2</sup>) groups, with predominant visceral (n = 20) or subcutaneous adipose (n = 20) tissue accumulation.

Patients were allowed 10–12 weeks to recover from surgery before metabolic evaluation. Inflammatory parameters such as white blood cell count and C-reactive protein had to be normal for participation. The oral glucose tolerance test (OGTT) was performed according to the criteria of the American Diabetes Association (22). Three days before the OGTT, the patients documented a high-carbohydrate diet. The OGTT was performed after an overnight fast with 75 g standardized glucose solution (Glucodex Solution 75 g; Merieux, Montreal, Canada). Venous blood samples were taken at 0, 60, and 120 min for measurements of plasma glucose concentrations. Insulin sensitivity was assessed by euglycemic-hyperinsulinemic clamp (23), and the cutoff for insulin resistance was arbitrarily chosen from results of >120 individuals with the same population background who underwent the same euglycemic-hyperinsulinemic clamp protocol (24).

**Analytical methods.** Anandamide, 2-AG, oleoylethanolamide, and arachidonic acid were quantified by liquid chromatography/in-line mass spectrometry, as previously described in detail (25). Basal blood samples were taken after an overnight fast to determine glucose, insulin, and standard laboratory parameters. Plasma insulin was measured with a two-site chemiluminescent enzyme immunoassay for the IMMULITE automated analyzer (Diagnostic Products, Los Angeles, CA). For the quantification of serum free fatty acids, an *in vitro* enzymatic colorimetric method was used (NEFA C; Wako Chemicals, Neuss, Germany). Plasma cholesterol and triglyceride concentrations were measured as previously described (24). Total RNA was extracted from adipose tissue samples using Qiagen RNeasy MiniKit (including the RNase-free DNase set; Qiagen, Hilden, Germany), and 1 μg RNA was reversed transcribed with standard reagents (Life Technologies, Grand Island, NY).

Human *CB<sub>1</sub>* and *FAAH* mRNA expression was measured with premixed assays-on-demand for human *CB<sub>1</sub>*, *FAAH*, and 18S rRNA (PE Biosystems, Weiterstadt, Germany). Gene expression was measured using an ABI 7000 sequence detection system for real-time PCR (Applied Biosystems, Darmstadt, Germany) with the standard curve method. Human *CB<sub>1</sub>* and *FAAH* mRNA expression was calculated relative to 18S rRNA to normalize for differences in starting material and differing efficiency of cDNA synthesis between samples. **Statistical analyses.** Data are shown as means ± SE unless stated otherwise. Before statistical analysis, non-normally distributed parameters were logarithmically transformed to approximate a normal distribution. Expression differences between visceral and subcutaneous adipose tissue were assessed using the paired Student's *t* test, and differences between more than two groups were analyzed by ANOVA and post hoc Bonferroni-Holm test. Linear relationships were assessed by least-squares regression analysis. Multivariate relationships were assessed by a general linear model. Statistical software from the SAS Institute (Cary, NC) was used. *P* values <0.05 were considered to be statistically significant.

**RESULTS**

**Circulating 2-AG is increased in visceral obesity.**

Clinical characteristics of the 60 men and women included in this study are given in Table 1. A lean control group was compared with two obese subgroups with predominantly visceral or subcutaneous adipose tissue accumulation based on computed tomography measurements of fat distribution. Circulating 2-AG levels were significantly increased in obese compared with lean subjects, which was essentially accounted for by visceral obese subjects (Fig. 1A). 2-AG levels were significantly correlated with BMI (*r* = 0.32, *P* = 0.03), percent body fat (*r* = 0.45, *P* = 0.03), and visceral fat area in both sexes (Fig. 1B) without significant sex differences. In contrast, plasma anandamide concentrations were higher in women compared with men but not different between lean and obese subgroups (Fig. 2). Interrelationships between anthropometric and metabolic parameters with the endocannabinoid system are shown in Table 2. The precursor for endocannabinoid biosynthesis, arachidonic acid, and an endocannabinoid-

Downloaded from http://diabetesjournals.org/diabetes/article-pdf/55/11/3053/649841/zdb01106003053.pdf by guest on 08 October 2024

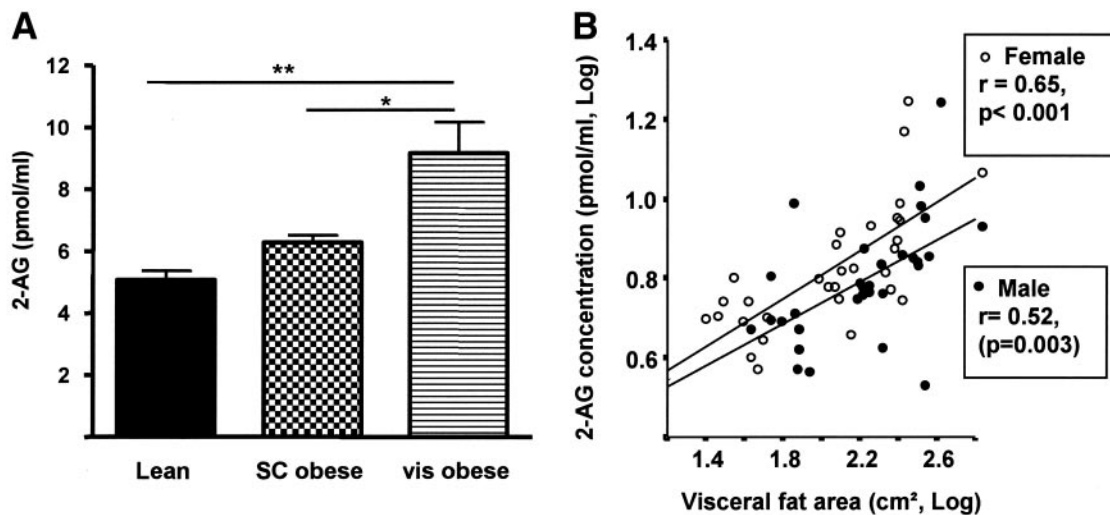


FIG. 1. Circulating 2-AG concentrations in lean and obese subjects. Circulating 2-AG concentrations were measured in one lean control group (BMI <25 kg/m<sup>2</sup>, *n* = 20) and in two obese groups (BMI >30 kg/m<sup>2</sup>) with different fat distribution phenotypes. Fat distribution was determined by measurement of abdominal adipose tissue areas using computed tomography. Subjects were divided in visceral (vis) obese (*n* = 20) or subcutaneous (SC) obese (*n* = 20) groups. **A**: 2-AG is clearly increased in subjects with visceral obesity. No sex differences were found for plasma 2-AG concentrations in the three groups. **B**: In both men and women, circulating 2-AG concentrations correlate with abdominal visceral fat area as measured by computed tomography scans. Data are means ± SE. \**P* < 0.05, \*\**P* < 0.01 by ANOVA.

like molecule that does not activate endocannabinoid receptors, oleylethanolamide, were not significantly related to obesity-associated measures.

**CB<sub>1</sub> and FAAH mRNA gene expression in adipose tissue depots.** Gene expression analysis of 60 paired samples of visceral and subcutaneous adipose tissue re-

vealed that mRNA expression of both *CB<sub>1</sub>* and *FAAH* was higher in the visceral than in the subcutaneous fat depot (Fig. 3). *CB<sub>1</sub>* and *FAAH* gene expression was not different between men and women. *CB<sub>1</sub>* and *FAAH* mRNA levels were significantly higher in adipose tissue of lean compared with obese subjects (Fig. 3) but not different be-

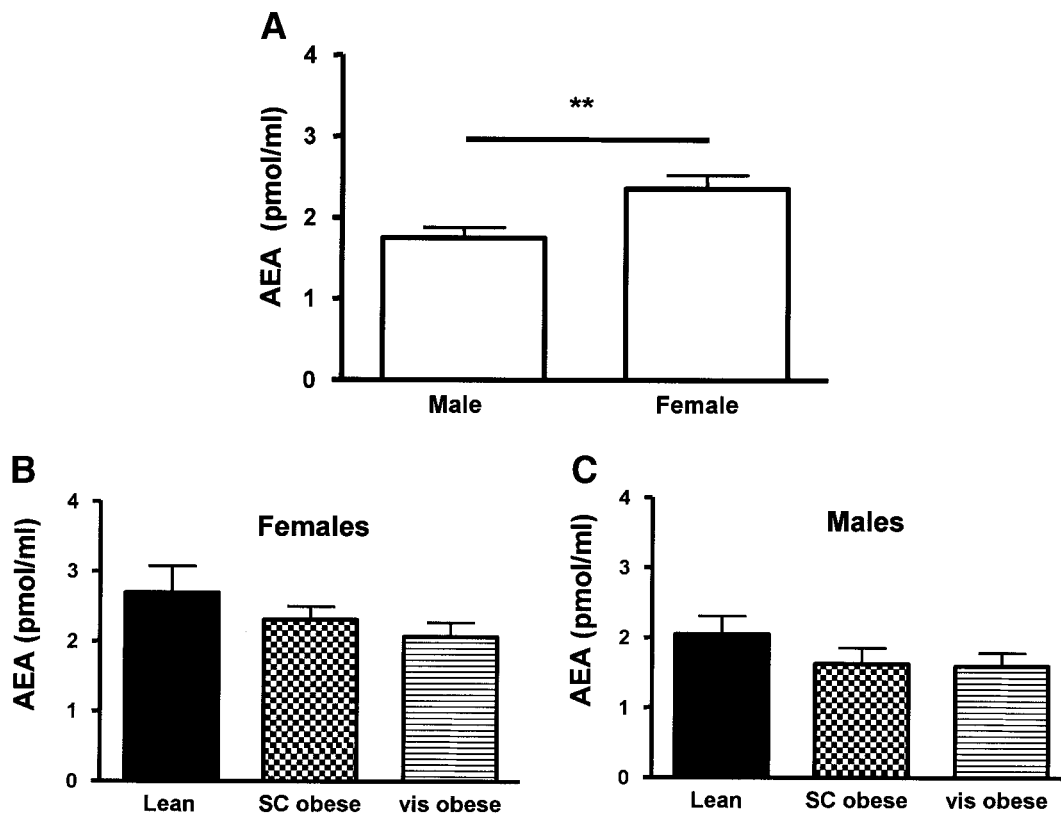


FIG. 2. Circulating anandamide concentrations in lean and obese subjects. Circulating anandamide concentrations were measured in one lean control group (BMI <25 kg/m<sup>2</sup>, *n* = 20) and in two obese groups (BMI >30 kg/m<sup>2</sup>) with different fat distribution phenotypes. Fat distribution was determined by measurement of abdominal adipose tissue areas using computed tomography. Subjects were divided in visceral (vis) obese (*n* = 20) or subcutaneous (SC) obese groups (*n* = 20). **A**: Anandamide (AEA) plasma concentrations differed between men and women. Anandamide levels are not significantly changed by obesity in women (**B**) and men (**C**). Data are means ± SE. \**P* < 0.05, \*\**P* < 0.01 by ANOVA.

TABLE 2  
Correlations between anthropometric and metabolic parameters with measures of the peripheral endocannabinoid system

	Male				Female			
	<i>CB<sub>1</sub></i> receptor visceral mRNA	<i>FAAH</i> visceral mRNA	2-AG	Anandamide	<i>CB<sub>1</sub></i> receptor visceral mRNA	<i>FAAH</i> mRNA	2-AG	Anandamide
Age	0.003	0.08	-0.01	-0.15	-0.43*	-0.45*	0.41*	-0.1
BMI	-0.5†	-0.35	0.55†	0.26	-0.65†	-0.64†	0.64†	0.21
Visceral abdominal adipose tissue area	-0.53†	-0.38*	0.52†	0.31	-0.64†	-0.56†	0.65†	0.23
Percent body fat	-0.49†	-0.19	0.3	0.15	-0.62†	-0.43*	0.5†	0.14
Fasting plasma glucose	-0.003	-0.37*	0.23	0.22	-0.14	0.25	-0.06	0.18
Fasting insulin	-0.4*	-0.4*	0.41*	0.2	-0.58†	-0.3	0.42*	0.15
GIR	0.4	0.58†	-0.5*	-0.2	0.3	0.06	-0.32	-0.11
Free fatty acid	-0.02	-0.04	0.15	0.1	-0.49†	-0.3	0.4*	0.1

GIR, glucose infusion rate during the steady state of an euglycemic-hyperinsulinemic clamp. \* $P < 0.05$ ; † $P < 0.01$ .

tween the two fat distribution phenotypes. Significant correlations were found between visceral and subcutaneous mRNA levels, for both *CB<sub>1</sub>* and *FAAH* (Fig. 4). Correlations between endocannabinoid system gene expression and anthropometric and metabolic parameters are shown in Table 2. These correlations were further analyzed by multivariate linear regression models, including age, sex, percent body fat, fasting plasma insulin, and plasma 2-AG levels as independent variables. These models revealed percent body fat and 2-AG as determinants of visceral *CB<sub>1</sub>* gene expression and only circulating 2-AG as a predictor of visceral *FAAH* gene expression (Table 3). Percent body fat and circulating 2-AG levels were also identified as the strongest predictors of subcutaneous *CB<sub>1</sub>* and *FAAH* mRNA expression (data not shown).

**Relationship of circulating endocannabinoids with metabolic parameters.** Circulating 2-AG correlates with measures of insulin sensitivity, including increased fasting plasma insulin concentrations and decreased glucose infusion rate during the steady state of the euglycemic-hyperinsulinemic clamp (Table 2 and Fig. 5). The negative correlation between glucose infusion rate and 2-AG was

still significant after adjusting the glucose infusion rate for visceral fat area, BMI, or percent body fat. However, multivariate regression analysis revealed that only visceral abdominal adipose tissue areas are determinants of glucose infusion rate during the clamp and fasting plasma insulin concentrations (Table 4). In addition, 2-AG levels were positively correlated with serum triglycerides ( $r = 0.3$ ,  $P = 0.03$ ) and free fatty acids ( $r = 0.41$ ,  $P = 0.001$ ) but negatively correlated with HDL cholesterol ( $r = -0.42$ ,  $P = 0.001$ ), which was still significant after adjustment for adiponectin plasma concentrations. No significant correlation exists between adiponectin and 2-AG concentrations ( $r = -0.18$ ,  $P = 0.2$ ). Anandamide was not correlated with these metabolic parameters, including adiponectin. Since genetic deletion of *CB<sub>1</sub>* receptors was shown to be associated with decreased hepatic expression of the lipogenic transcription factor sterol regulatory element-binding protein 1c (SREBP-1c), we examined whether a similar relationship existed for adipose *CB<sub>1</sub>* expression. In the visceral adipose tissue depot, *CB<sub>1</sub>* receptor mRNA was positively correlated with gene expression of SREBP-1c (Fig. 6).

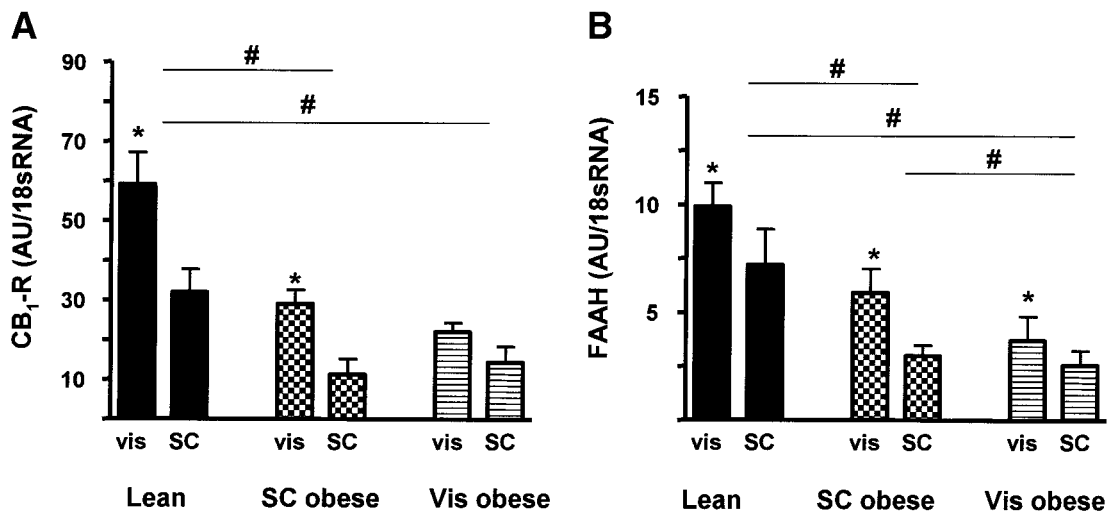


FIG. 3. *CB<sub>1</sub>* and *FAAH* mRNA expression in lean and obese subjects. Gene expression was determined by real-time RT-PCR in paired samples of subcutaneous (SC) and visceral (vis) adipose tissue in all 60 subjects. A: In all groups, *CB<sub>1</sub>* mRNA expression was higher in visceral compared with subcutaneous adipose tissue ( $P < 0.05$ ). Subjects in the lean group had significantly higher *CB<sub>1</sub>* mRNA expression than obese subjects, with no effect of the fat distribution phenotypes. B: In all groups, visceral *FAAH* mRNA levels were significantly higher than in subcutaneous adipose tissue. *FAAH* expression was highest in lean subjects and lowest in subjects with visceral obesity. Data are means  $\pm$  SE. Group comparisons by ANOVA and  $t$  test for paired samples. \* $P < 0.05$  for visceral vs. subcutaneous expression; # $P < 0.05$  between groups.



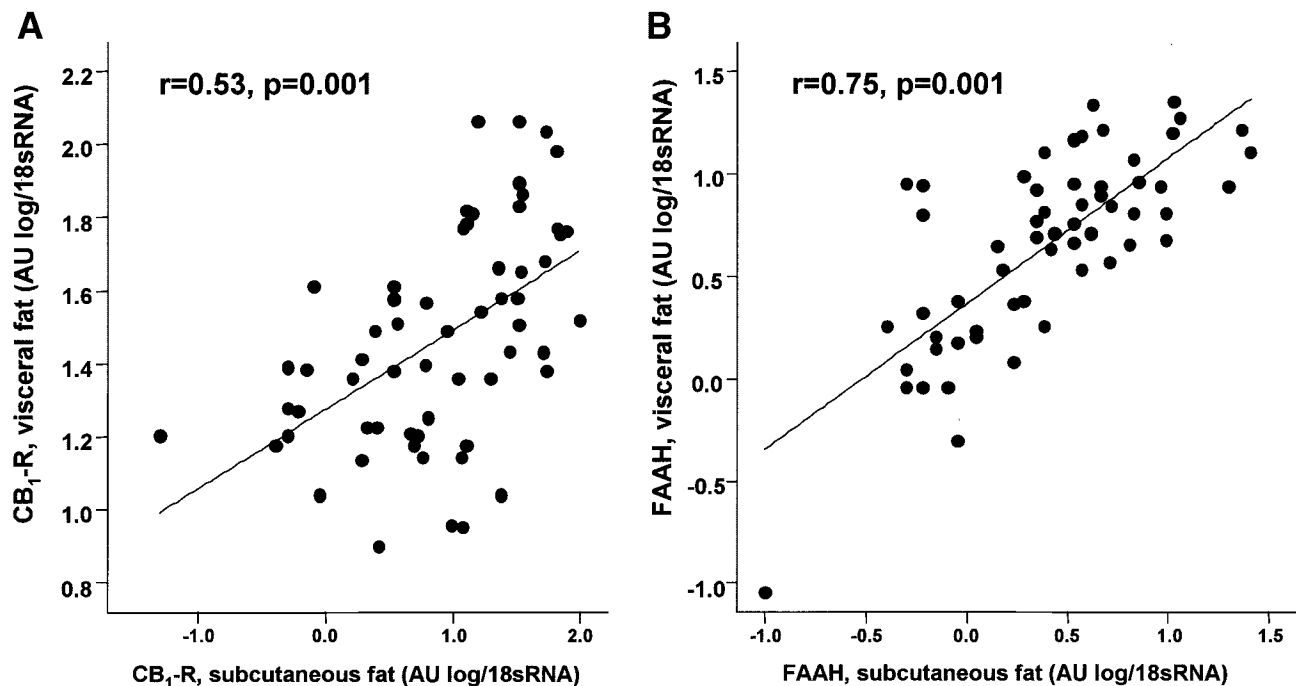


FIG. 4. Correlation between visceral and subcutaneous adipose tissue gene expression of  $CB_1$  receptor (A) and  $FAAH$  (B) genes. Linear regression analysis with log-transformed data (1 AU = 1 ag target gene/100 ng total RNA). Paired samples from visceral and subcutaneous adipose tissue were obtained from 60 Caucasian men ( $n = 30$ ) and women ( $n = 30$ ) and analyzed by real-time RT-PCR.

## DISCUSSION

The endocannabinoid system plays a well-known role in the central control of appetite, food intake, and energy balance. All these effects are mediated by  $CB_1$  receptors (26).  $CB_1^{-/-}$  mice are lean and resistant to diet-induced obesity (10). However, the lean phenotype is associated with decreased food intake only in young animals. Pair-fed older wild-type mice are heavier than the  $CB_1$  gene-deleted animals (9), thus suggesting an additional, most likely peripheral, mechanism. Similar findings were obtained by

TABLE 3

Multivariate regression analyses to identify determinants of  $CB_1$  receptor and  $FAAH$  mRNA expression in visceral adipose tissue ( $n = 60$ )

Dependent variable	Visceral $CB_1$ receptor mRNA	Visceral $FAAH$ mRNA
Model 1		
Age	-0.250 (0.056)	-0.231 (0.078)
Sex	0.107 (0.408)	-0.045 (0.729)
Model 2		
Age	-0.113 (0.334)	-0.165 (0.213)
Sex	0.073 (0.514)	-0.061 (0.632)
Percent body fat	<b>-0.505 (&lt;0.001)</b>	-0.244 (0.068)
Model 3		
Age	-0.085 (0.463)	-0.145 (0.280)
Sex	0.102 (0.368)	-0.040 (0.756)
Percent body fat	<b>-0.451 (&lt;0.001)</b>	-0.203 (0.143)
Fasting insulin	-0.186 (0.125)	-0.139 (0.315)
Model 4		
Age	-0.023 (0.833)	-0.044 (0.684)
Sex	0.132 (0.202)	0.009 (0.934)
Percent body fat	<b>-0.343 (0.004)</b>	-0.031 (0.787)
Fasting insulin	-0.152 (0.168)	-0.085 (0.446)
2-AG (pmol/ml)	<b>-0.385 (0.001)</b>	<b>-0.614 (&lt;0.001)</b>

Data are  $\beta$  ( $P$  value). Significant differences are indicated in bold.

treatment of diet-induced obese mice with the selective  $CB_1$  receptor antagonist rimonabant. Again, reduced food intake was only observed during the 1st week of treatment, whereas decreased body weight was sustained over the complete 5-week treatment period (8). These surpris-

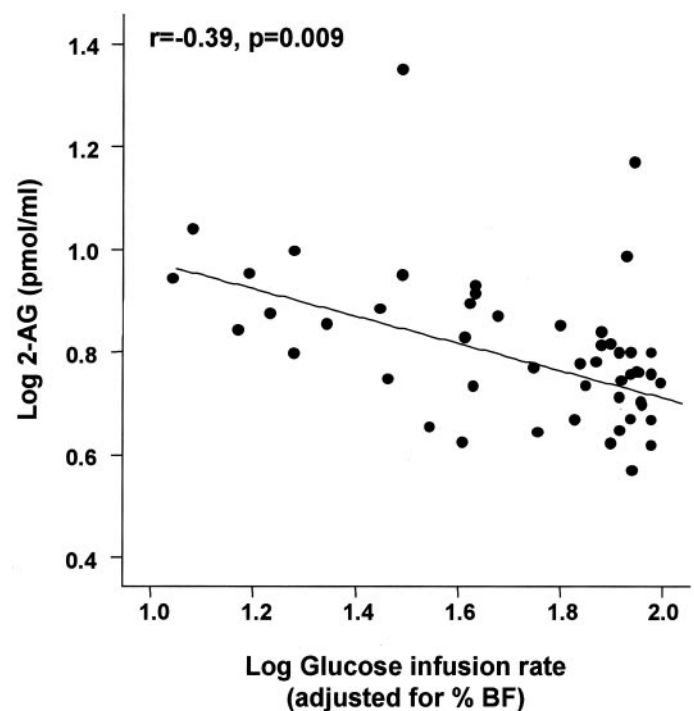


FIG. 5. Correlation between 2-AG plasma concentrations and insulin sensitivity. We found a significant correlation between 2-AG plasma concentrations and glucose infusion rate during the steady state of an euglycemic-hyperinsulinemic clamp. The correlation remained significant after adjusting for total body fat content. Data were log transformed to achieve normal distribution. % BF, percent body fat.

TABLE 4  
Multivariate regression analyses to identify independent association between plasma 2-AG concentrations and measures of insulin sensitivity ( $n = 60$ )

	GIR clamp	Fasting plasma insulin
Model 1		
2-AG	<b>-0.364 (0.012)</b>	0.228 (0.080)
Model 2		
Percent body fat	-0.113 (0.453)	<b>0.279 (0.040)</b>
2-AG	<b>-0.325 (0.034)</b>	0.131 (0.392)
Model 3		
Visceral fat area	<b>-0.480 (0.002)</b>	<b>0.430 (0.005)</b>
Percent body fat	-0.006 (0.963)	0.156 (0.239)
2-AG	-0.132 (0.376)	-0.056 (0.689)

Data are  $\beta$  ( $P$  value). GIR, glucose infusion rate during the steady state of an euglycemic-hyperinsulinemic clamp. Significant differences are indicated in bold.

ing observations led to the discovery of  $CB_1$  receptors first on rodent adipocytes (9,13) and later to the identification of  $CB_1$  receptors on human adipocytes (21,27). Both, the  $CB_1^{-/-}$  genotype andrimonabant treatment are associated with a similar gene expression profile in mouse adipose tissue (28). Besides actions on adipocytes, the endocannabinoid system might control metabolic functions by acting on peripheral tissues, including hepatocytes, the gastrointestinal tract, skeletal muscle, endothelial cells, and possibly also the pancreas (11,12,14,29,30). The clinical importance of the endocannabinoid system is further supported by studies showing that pharmacological blockade of the system is a promising therapeutic approach in the treatment of various components of the metabolic syndrome (15–17,31,32).

Visceral fat accumulation, typically referred to as ab-

dominal obesity, might represent a key pathophysiologic mechanism for the clustering of metabolic abnormalities (33). Here, we studied the regulation of the endocannabinoid system in human visceral obesity. On the systemic level, we found that the key endocannabinoid 2-AG is markedly increased in obese compared with lean subjects. Specifically, 2-AG levels were predominantly increased in subjects with abdominal obesity, and a significant correlation was found between circulating 2-AG and visceral fat mass. The significant negative relationship between 2-AG levels and measures of insulin sensitivity was independent of the effects of body fat mass, suggesting additional peripheral effects of the endocannabinoid system. Increased circulating 2-AG levels confirm previous findings in postmenopausal women with a less well-characterized obese phenotype (21). Both 2-AG and anandamide are also increased in blood of patients with type 2 diabetes (14). A selective upregulation of 2-AG, but not anandamide, content has recently been described in visceral adipose tissue of obese patients (14), but the reverse situation was described for endocannabinoids in the liver of diet-induced mice (11). Both, hypothalamic and uterine levels of endocannabinoids are increased in genetically obese animals presenting with either leptin deficiency (*ob/ob* mice) or impaired leptin signaling (*db/db* mice and *fa/fa* rats). These findings, however, appear to be related to interactions between leptin and endocannabinoids, rather than reflecting obesity-associated changes (18,20). Taken together, these findings suggest a complex regulation of circulating and tissue concentrations of endocannabinoids. Several aspects, e.g., clinical condition, concomitant medication, fasting/nonfasting state, and possibly also sex differences, need to be considered. Furthermore, some methodological precautions must be followed to avoid artificially increased anandamide levels in blood (34).

To further elucidate the regulation of the endocannabinoid system in adipose tissue, we measured expression of  $CB_1$  receptor and *FAAH* mRNA in paired samples of subcutaneous and visceral adipose tissue. Increased systemic 2-AG concentrations in visceral obese subjects were associated with decreased  $CB_1$  receptor gene expression in adipose tissue, suggesting a negative-feedback loop regulation. Moreover, multivariate regression models identified 2-AG plasma concentrations, in addition to body fat mass, as significant predictors of  $CB_1$  gene expression. We further found that  $CB_1$  gene expression in visceral and subcutaneous depots were closely correlated, indicating that  $CB_1$  gene expression in subcutaneous adipose tissue (21) may be an acceptable surrogate for  $CB_1$  gene expression in visceral adipose tissue. Interestingly, visceral  $CB_1$  expression levels were higher than subcutaneous levels in all fat distribution groups. The regulation of  $CB_1$  receptors in obesity also appears to be complex.  $CB_1$  gene expression is increased in adipose tissue of obese Zucker rats (*fa/fa*) (13), in liver of diet-induced obese mice (11), and in skeletal muscle (12) but unchanged in the uterus of *ob/ob* mice (20). However, studies on diet-induced obesity in the rat showed that  $CB_1$  density was unchanged in the hypothalamus and decreased in extrahypothalamic brain regions (19). Although these authors also speculate on a negative-feedback loop for  $CB_1$  receptor regulation, central endocannabinoid levels were not determined in that particular study.

Genetic deletion of  $CB_1$  receptors protects mice from the development of a fatty liver in response to high-fat feeding (11). The mechanism appears to be a decreased

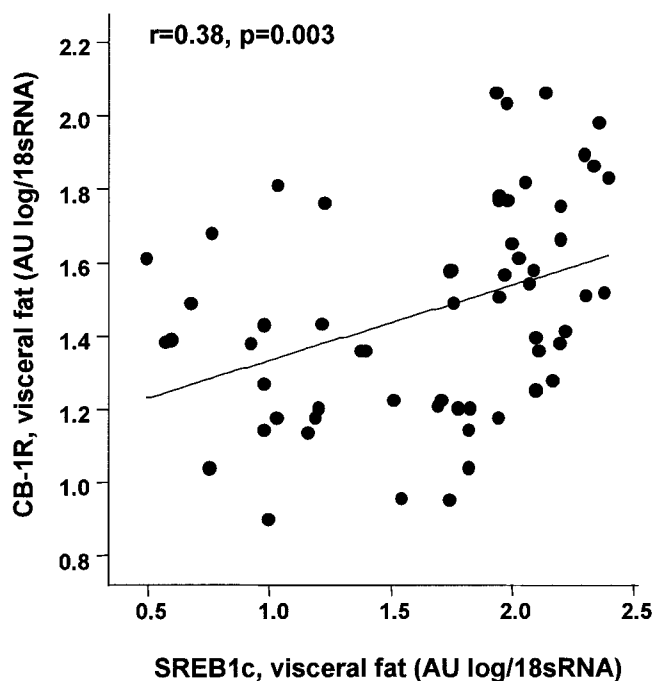


FIG. 6. Correlation between visceral  $CB_1$  mRNA levels and *SREBP-1c* gene expression in visceral adipose tissue. Linear regression analysis with log transformed. Total RNA from visceral adipose tissue was obtained from 60 Caucasian men ( $n = 30$ ) and women ( $n = 30$ ) and analyzed by real-time RT-PCR.

rate of fatty acid synthesis due to downregulation of the lipogenic transcription factor SREBP-1c, as subsequently confirmed by in vitro studies with isolated hepatocytes. In wild-type mice, high-fat feeding rapidly increased intrahepatic endocannabinoid levels, which promoted lipogenesis even before the onset of diet-induced obesity (11). Lipogenic activity of endocannabinoids has also been suggested in rat adipocytes, as lipoprotein lipase activity was increased by  $CB_1$  receptor activation (9). In accordance with that, we found a significant correlation between  $CB_1$  receptor and SREBP-1c mRNA expression in visceral adipose tissue. A detailed investigation of lipogenic enzymes and triglyceride synthesis rates, however, is needed in human adipocytes to clearly establish this role of endocannabinoids.  $CB_{1/2}$  receptor-mediated changes in intracellular cAMP levels, as recently shown in human adipocytes, may be an important mechanism to influence metabolic enzymes (27).

A role of endocannabinoids for adiponectin dysregulation in obesity has been suggested in rodent and human adipocytes (13,14,35). If this hypothesis holds true, the calculated weight loss-independent effect of rimonabant treatment on circulating adiponectin levels could be explained on the adipocyte level (16). We did not see a significant correlation between circulating 2-AG levels and adiponectin levels in our patients. This finding, however, does not necessarily speak against a regulatory role of endocannabinoids or, more precisely,  $CB_1$  blockade on the adipocyte level. Clearly, detailed studies are needed in the future that directly compare in vitro and in vivo approaches in humans to elucidate effects of endocannabinoids and  $CB_1$  blockade on metabolic regulation and adipose tissue, liver, skeletal muscle, and pancreatic physiology and pathophysiology (14,35,36). Then, the pleiotropic effects of  $CB_1$ -receptor blockade by rimonabant may be easier to explain (15–17,31,32). However, these effects are in part mediated by a predominant effect on visceral adipose tissue, as the dysregulation of the endocannabinoid system is more pronounced in subjects with abdominal obesity.

Which mechanisms lead to increased endocannabinoid levels in abdominal obesity? One possibility is the increased supply of precursors for endocannabinoid biosynthesis and/or increased activity of enzymes involved in endocannabinoid synthesis (18). When studying circulating levels of the precursor arachidonic acid and of oleoylethanolamide, a molecule with endocannabinoid structure and synthesized by the same enzymes that do not activate  $CB$  receptors, we did not find any significant correlation with measures of adiposity.

Thus, decreased endocannabinoid degradation must be considered as a second possibility. Given the overwhelming mass of adipose tissue compared with other organs, a contribution of adipocytes to endocannabinoid inactivation, which may be disturbed in visceral obese subjects, is an attractive hypothesis. Endocannabinoid action is limited by intracellular enzymatic degradation. One of the major catabolizing enzymes is *FAAH*, and a marked downregulation of *FAAH* gene expression in adipose tissue of obese compared with lean subjects was recognized, with the lowest levels in visceral obese subjects. Downregulation of *FAAH* activity in the liver with high-fat feeding was associated with increased anandamide levels in the liver (11). Another degrading enzyme, monoacylglycerol lipase, has been found in human adipose tissue, but the expression is apparently not influenced by obesity (14). A role of

*FAAH* in human obesity has recently also been proposed by a strong association of a *FAAH* missense mutation that leads to decreased enzymatic activity with human obesity (37). On the other hand, *FAAH* does not play an important role in vivo for the degradation of 2-AG in knockout mice (38,39). Interactions between leptin and the endocannabinoid system have been demonstrated in different in vivo and in vitro systems (14,18,40). The mechanisms that contribute to changes in the regulation of the endocannabinoid system in human abdominal obesity has to be elucidated in the future.

Our study is relatively small, given the fact that each phenotypic group is represented by both sexes. Also, the examination of surgical patients introduces some variation in age and concomitant medication, which may interfere with parameters of the endocannabinoid system. The influence of variables such as age, sex, hormonal status, and concomitant medication on components of the endocannabinoid system have not been studied at present in humans. On the other hand, our data for the most part confirm the findings from our first study in women with unknown fat distribution phenotypes but with no concomitant medications, with the same hormonal status, and with only small variation in age (21).

In conclusion, extending previous observations that the peripheral endocannabinoid system may be activated in human obesity (21), we demonstrate here that visceral fat accumulation is an important correlate of an activated peripheral endocannabinoid system. In addition, strong expression of  $CB_1$  receptors in visceral adipose tissue could represent a primary target for the beneficial effects of  $CB_1$  blockade on different components of the metabolic syndrome.

#### ACKNOWLEDGMENTS

This study was supported by grants from the Deutsche Forschungsgemeinschaft (BL 580/3-1 [to M.B.], STU 192/6-1 [to M.S.], and FA 376/3-1 [to M.F.]) and the Bundesministerium für Bildung und Forschung (0313027B Nutrigenomik [to S.E.]).

We thank Judy Harvey-White for excellent technical help in measuring endocannabinoid levels.

#### REFERENCES

1. Cota D, Marsicano G, Lutz B, Vicenati V, Stalla GK, Pasquali R, Pagotto U: Endogenous cannabinoid system as a modulator of food intake. *Int J Obes Relat Metab Disord* 27:289–301, 2003
2. Di Marzo V, Matias I: Endocannabinoid control of food intake and energy balance. *Nat Neurosci* 8:585–589, 2005
3. Piomelli D: The molecular logic of endocannabinoid signaling. *Nat Rev Neurosci* 4:873–884, 2003
4. Di Marzo V, Bifulco M, De Petrocellis L: The endocannabinoid system and its therapeutic exploitation. *Nat Rev Drug Discov* 3:771–784, 2004
5. Williams CM, Kirkham TC: Anandamide induces overeating: mediation by central cannabinoid ( $CB_1$ ) receptors. *Psychopharmacology (Berl)* 143: 315–317, 1999
6. Jamshidi N, Taylor DA: Anandamide administration into the ventromedial hypothalamus stimulates appetite in rats. *Br J Pharmacol* 134:1151–1154, 2001
7. Kirkham TC, Williams CM, Fezza F, Di Marzo V: Endocannabinoid levels in rat limbic forebrain and hypothalamus in relation to fasting, feeding and satiation: stimulation of eating by 2-arachidonoyl glycerol. *Br J Pharmacol* 136:550–557, 2002
8. Ravinet Trillou C, Arnone M, Delgorge C, Gonalons N, Keane P, Maffrand JP, Soubrie P: Anti-obesity effect of SR141716, a  $CB_1$  receptor antagonist, in diet-induced obese mice. *Am J Physiol Regul Integr Comp Physiol* 284:R345–R353, 2003
9. Cota D, Marsicano G, Tschöp M, Grubler Y, Flachskamm C, Schubert M, Auer D, Yassouridis A, Thöne-Reineke C, Ortman S, Tomassoni F,



- Cervino C, Nisoli E, Linthorst AC, Pasquali R, Lutz B, Stalla GK, Pagotto U: The endogenous cannabinoid system affects energy balance via central orexigenic drive and peripheral lipogenesis. *J Clin Invest* 112:423–431, 2003
10. Ravinet Trillou C, Delgorge C, Menet C, Arnone M, Soubrie P: CB1 cannabinoid receptor knockout in mice leads to leanness, resistance to diet-induced obesity and enhanced leptin sensitivity. *Int J Obes Relat Metab Disord* 28:640–648, 2004
  11. Osei-Hyiaman D, Depetrillo M, Pacher P, Liu J, Radaeva S, Bátkai S, Harvey-White J, Mackie K, Offertaler L, Wang L, Kunos G: Endocannabinoid activation at hepatic CB1 receptors stimulates fatty acid synthesis and contributes to diet-induced obesity. *J Clin Invest* 115:1298–1305, 2005
  12. Liu YL, Connoley IP, Wilson CA, Stock MJ: Effects of the cannabinoid CB1 receptor antagonist SR141716 on oxygen consumption and soleus muscle glucose uptake in Lep(ob)/Lep(ob) mice. *Int J Obes (Lond)* 29:183–187, 2005
  13. Bensaid M, Gary-Bobo M, Esclangon A, Maffrand JP, Le Fur G, Oury-Donat F, Soubrie P: The cannabinoid CB1 receptor antagonist SR141716 increases Acp30 mRNA expression in adipose tissue of obese *fa/fa* rats and in cultured adipocyte cells. *Mol Pharmacol* 63:908–914, 2003
  14. Matias I, Gonthier MP, Orlando P, Martiadis V, De Pertrocellis L, Cervino C, Petrosino S, Hoareau L, Festy F, Pasquali R, Roche R, Maj M, Pagotto U, Monteleone P, Di Marzo V: Regulation, function, and dysregulation of endocannabinoids in models of adipose and  $\beta$ -pancreatic cells and in obesity and hyperglycemia. *J Clin Endocrinol Metab* 91:3171–3180, 2006
  15. Van Gaal LF, Rissanen AM, Scheen AJ, Ziegler O, Rössner S: Effects of the cannabinoid-1 receptor blocker rimonabant on weight reduction and cardiovascular risk factors in overweight patients: 1-year experience from the RIO-Europe study. *Lancet* 365:1389–1397, 2005
  16. Després JP, Golay A, Sjöström L: Effects of rimonabant on metabolic risk factors in overweight patients with dyslipidemia. *N Engl J Med* 353:2121–2134, 2005
  17. Pi-Sunyer FX, Aronne LJ, Heshmati HM, Devin J, Rosenstock J: Effect of rimonabant, a cannabinoid-1 receptor blocker, on weight and cardiometabolic risk factors in overweight or obese patients: RIO-North America: a randomized controlled trial. *JAMA* 295:761–775, 2006
  18. Di Marzo V, Goparaju SK, Wang L, Liu J, Bátkai S, Jarai Z, Fezza F, Miura GI, Palmiter RD, Sugiura T, Kunos G: Leptin-regulated endocannabinoids are involved in maintaining food intake. *Nature* 410:822–825, 2001
  19. Harrold JA, Elliott JC, King PJ, Widdowson PS, Williams G: Down-regulation of cannabinoid-1 (CB-1) receptors in specific extrahypothalamic regions of rats with dietary obesity: a role for endogenous cannabinoids in driving appetite for palatable food? *Brain Res* 952:232–238, 2002
  20. Maccarrone M, Fride E, Bisogno T, Bari M, Cascio MG, Battista N, Finazzi AA, Suris R, Mechoulam R, Di Marzo V: Up-regulation of the endocannabinoid system in the uterus of leptin knockout (ob/ob) mice and implications for fertility. *Mol Hum Reprod* 11:21–28, 2005
  21. Engeli S, Böhnke J, Feldpausch M, Gorzelniak K, Janke J, Bátkai S, Pacher P, Harvey-White J, Luft FC, Sharma AM, Jordan J: Activation of the peripheral endocannabinoid system in human obesity. *Diabetes* 54:2838–2843, 2005
  22. Expert Committee on the Diagnosis and Classification of Diabetes Mellitus: Report of the Expert Committee on the Diagnosis and Classification of Diabetes Mellitus. *Diabetes Care* 26 (Suppl. 1):S5–S20, 2003
  23. DeFronzo RA, Tobin JD, Andres R: Glucose clamp technique: a method for quantifying insulin secretion and resistance. *Am J Physiol* 237:E214–E223, 1979
  24. Berndt J, Klötting N, Kralisch S, Kovacs P, Fasshauer M, Schön MR, Stumvoll M, Blüher M: Plasma visfatin concentrations and fat depot-specific mRNA expression in humans. *Diabetes* 54:2911–2916, 2005
  25. Wang L, Liu J, Harvey-White J, Zimmer A, Kunos G: Endocannabinoid signaling via cannabinoid receptor 1 is involved in ethanol preference and its age-dependent decline in mice. *Proc Natl Acad Sci U S A* 100:1393–1398, 2003
  26. Pagotto U, Marsicano G, Cota D, Lutz B, Pasquali R: The emerging role of the endocannabinoid system in endocrine regulation and energy balance. *Endocr Rev* 27:73–100, 2006
  27. Roche R, Hoareau L, Bes-Houtmann S, Gonthier MP, Laborde C, Baron JF, Haffaf Y, Cesari M, Festy F: Presence of the cannabinoid receptors, CB1 and CB2, in human omental and subcutaneous adipocytes. *Histochem Cell Biol* 126:177–187, 2006
  28. Jbilo O, Ravinet Trillou C, Arnone M, Buisson I, Bribes E, Peleraux A, Penarier G, Soubrie P, Le Fur G, Galiegue S, Casellas P: The CB1 receptor antagonist rimonabant reverses the diet-induced obesity phenotype through the regulation of lipolysis and energy balance. *FASEB J* 19:1567–1569, 2005
  29. Gomez R, Navarro M, Ferrer B, Trigo JM, Bilbao A, Del Arco I, Cippitelli A, Nava F, Piomelli D, Rodriguez de Fonseca F: A peripheral mechanism for CB1 cannabinoid receptor-dependent modulation of feeding. *J Neurosci* 22:9612–9617, 2002
  30. Bátkai S, Pacher P, Osei-Hyiaman D, Radaeva S, Liu J, Harvey-White J, Offertaler L, Mackie K, Rudd MA, Bukoski RD, Kunos G: Endocannabinoids acting at cannabinoid-1 receptors regulate cardiovascular function in hypertension. *Circulation* 110:1996–2002, 2004
  31. Gelfand EV, Cannon CP: Rimonabant: a cannabinoid receptor type 1 blocker for management of multiple cardiometabolic risk factors. *J Am Coll Cardiol* 47:1919–1926, 2006
  32. Pacher P, Bátkai S, Kunos G: The endocannabinoid system as an emerging target of pharmacotherapy. *Pharmacol Rev* 58:389–462, 2006
  33. Després JP: Is visceral obesity the cause of the metabolic syndrome? *Ann Med* 38:52–63, 2006
  34. Vogeser M, Hauer D, Christina AS, Huber E, Storr M, Schelling G: Release of anandamide from blood cells. *Clin Chem Lab Med* 44:488–491, 2006
  35. Perwitz N, Fasshauer M, Klein J: Cannabinoid receptor signaling directly inhibits thermogenesis and alters expression of adiponectin and visfatin. *Horm Metab Res* 38:356–358, 2006
  36. Gary-Bobo M, Elachouri G, Scatton B, Le Fur G, Oury-Donat F, Bensaid M: The cannabinoid CB1 receptor antagonist rimonabant (SR141716) inhibits cell proliferation and increases markers of adipocyte maturation in cultured mouse 3T3 F442A preadipocytes. *Mol Pharmacol* 69:471–478, 2006
  37. Sipe JC, Waalen J, Gerber A, Beutler E: Overweight and obesity associated with a missense polymorphism in fatty acid amide hydrolase (FAAH). *Int J Obes (Lond)* 29:755–759, 2005
  38. Ho WS, Hillard CJ: Modulators of endocannabinoid enzymic hydrolysis and membrane transport. *Handb Exp Pharmacol* 168:187–207, 2005
  39. Lichtman AH, Hawkins EG, Griffin G, Cravatt BF: Pharmacological activity of fatty acid amides is regulated, but not mediated, by fatty acid amide hydrolase in vivo. *J Pharmacol Exp Ther* 302:73–79, 2002
  40. Maccarrone M, Di Rienzo M, Finazzi-Agro A, Rossi A: Leptin activates the anandamide hydrolase promoter in human T lymphocytes through STAT3. *J Biol Chem* 278:13318–13324, 2003