

β -Cell Glucose Toxicity, Lipotoxicity, and Chronic Oxidative Stress in Type 2 Diabetes

R. Paul Robertson, Jamie Harmon, Phuong Oanh T. Tran, and Vincent Poitout

The relentless decline in β -cell function frequently observed in type 2 diabetic patients, despite optimal drug management, has variously been attributed to glucose toxicity and lipotoxicity. The former theory posits hyperglycemia, an outcome of the disease, as a secondary force that further damages β -cells. The latter theory suggests that the often-associated defect of hyperlipidemia is a primary cause of β -cell dysfunction. We review evidence that patients with type 2 diabetes continually undergo oxidative stress, that elevated glucose concentrations increase levels of reactive oxygen species in β -cells, that islets have intrinsically low antioxidant enzyme defenses, that antioxidant drugs and overexpression of antioxidant enzymes protect β -cells from glucose toxicity, and that lipotoxicity, to the extent it can be attributable to hyperlipidemia, occurs only in the context of preexisting hyperglycemia, whereas glucose toxicity can occur in the absence of hyperlipidemia. *Diabetes* 53 (Suppl. 1):S119–S124, 2004

Type 2 diabetes is generally viewed as a clinical syndrome with variable phenotypic expression rather than a single disease with a specific etiology. Phenotypic elements of the syndrome include β -cell insufficiency and insulin resistance. However, in most instances, the exact cause of type 2 diabetes seems to be polygenic in nature and is as yet unknown. Regardless of the primary causes of type 2 diabetes, a common clinical course is for patients to respond to therapy initially by normalizing their fasting glucose levels, but then to undergo gradual deterioration in glycemic control despite optimal medical management using a variety of drugs. Even the initial response in fasting glucose may be misleading because many patients still manifest abnormal glucose levels postprandially. This scenario gives rise to the concept of glucose toxicity, which envisions chronic exposure to abnormally high levels of glucose over many years as a pathogenic force that leads to toxic effects on the β -cell. Hence, chronic hyperglycemia, the adverse outcome of the initial polygenic disorder, in time becomes a secondary adverse force on the β -cell,

leading to a vicious cycle of continuous deterioration of β -cell function. Similar logic has been advanced to posit abnormal lipid levels as a causative force in the relentless deterioration of the β -cell. Proponents of this theory point out that most individuals with type 2 diabetes are obese and tend to have elevated lipid levels in their blood that become higher as glycemia worsens and that intra-islet lipid accumulation can decrease β -cell function.

The mechanisms whereby chronic elevations of glucose and/or lipids might damage β -cells are subjects of intense clinical and laboratory investigation. Whether one or the other of these forces is more important or whether they may be interrelated is another important consideration. In this article, we will explore the views that chronic oxidative stress is a mechanism whereby glucose excess can damage β -cells and that lipotoxicity requires hyperglycemia to exert harmful effects, whereas glucose toxicity does not require concomitant hyperlipidemia to do so.

EVIDENCE FOR INCREASED OXIDATIVE STRESS IN TYPE 2 DIABETES

Many clinical studies suggest that patients with type 2 diabetes are subjected to chronic oxidative stress (1–6). Sophisticated laboratory techniques, including high-performance liquid chromatography, gas chromatography/mass spectrometry, and immunostaining of pancreas biopsies, have been used. Pro-oxidants and markers for oxidative tissue damage, such as 8-hydroxy-deoxyguanine, 4-hydroxy-2-nonenal (HNE) proteins, 8-epi-prostaglandin $F_{2\alpha}$, hydroperoxides, and oxidation of DNA bases, have been reported to be elevated in serum, plasma, white blood cells, and pancreas biopsies of patients with type 2 diabetes (Table 1). Compared with nondiabetic control subjects, these markers showed changes that have ranged to fivefold above normal. Glutathione (GSH), the primary intracellular antioxidant, has been studied extensively. Murakami et al. (7) reported that erythrocytes from diabetic patients contain low levels of the reduced form of GSH, high levels of the oxidized form (GSSG), and a 51% reduction in the GSH/GSSG ratio. Sharma et al. (8) also reported that type 2 diabetic patients in poor glycemic control had depressed erythrocyte GSH levels. After treatment with sulfonylureas decreased HbA_{1c} levels, the erythrocyte GSH concentration increased twofold, almost reaching the values found in a nondiabetic control group. Similar data were reported by Yoshida et al. (9), who in addition reported that the activity of the rate-limiting enzyme of GSH synthesis, γ -glutamylcysteine synthase, increased with improved glycemic control. This group also reported that erythrocyte thiol transport levels were sig-

From the Pacific Northwest Research Institute and the Departments of Medicine and Pharmacology, University of Washington, Seattle, Washington.

Address correspondence and reprint requests to R. Paul Robertson, Department of Medicine, University of Washington, 720 Broadway, Seattle, WA 98122. E-mail: rpr@u.washington.edu.

Received for publication 4 March 2003 and accepted 27 March 2003.

This article is based on a presentation at a symposium. The symposium and the publication of this article were made possible by an unrestricted educational grant from Les Laboratoires Servier.

GSH, glutathione; NAC, *n*-acetylcysteine; ROS, reactive oxygen species.

© 2004 by the American Diabetes Association.

TABLE 1

Examples of studies documenting elevated markers of oxidative stress in blood elements and pancreas tissue in human type 2 diabetes

Substance	Method	Result	Reference
8-OH-guanine	Serum, HPLC	5 \times > NI	1
ASA hydroxylation by $\dot{O}H$	Plasma, HPLC	23% > NI	2
8-epi-PGF _{2α}	Plasma, GC/MS	3.5 \times > NI	3
Hydroperoxides	Plasma, HPLC	2.4 \times > NI	4
DNA base oxidation	White blood cells, GC/MS	2 \times > NI	5
8-OH-deoxyguanine and 4-OH-2-nonenal proteins	Pancreas, β -cell immunocytochemistry	2 \times > NI	6

GC/MS, gas chromatography/mass spectroscopy; HPLC, high-performance liquid chromatography; NI, normal.

nificantly and inversely correlated with HbA_{1c}. Paolisso et al. (10) reported that intravenous infusion of GSH in type 2 diabetic patients improved insulin secretion and glucose tolerance during oral glucose tolerance tests.

EVIDENCE THAT CHRONIC HYPERGLYCEMIA CAN INCREASE β -CELL REACTIVE OXYGEN SPECIES LEVELS

Many investigators have used animal models in their research to assess the proposition that deteriorating glycaemic control in type 2 diabetes causes oxidative stress on β -cells. For example, Ihara et al. (11) measured levels of 8-hydroxy-deoxyguanosine and 4-hydroxy-2-nonenal-modified proteins by immunohistochemical methods in β -cells of Goto-Kakizaki (GK) rats. They reported higher levels of these oxidative stress markers in GK rats compared with Wistar rats. Moreover, a diet rich in sucrose increased these two markers in GK rats, whereas inclusion of the hypoglycemic agent voglibose in the diet decreased marker levels. Tanaka et al. (12) reported elevated plasma concentrations of these two markers in Zucker diabetic fatty (ZDF) rats and that treatment prevented the increase. However, demonstration that glucose itself is capable of

generating reactive oxygen species (ROS) in β -cells is essential to the hypothesis that glucose-induced oxidative stress is a mechanism for glucose toxicity. Potential glucose-related pathways through which ROS can be formed include autoxidation, oxidative phosphorylation, glycosylation, and the glucosamine pathways (13–17). Wolff and colleagues (13,14) were among the first to suggest that autoxidation of glucose could yield ROS. They showed that glyceraldehyde in the presence of heavy metals could form a radical anion via enolization. In the presence of oxygen, superoxide was generated, which in turn formed hydrogen peroxide via superoxide dismutase. In the presence of heavy metals, hydrogen peroxide generates highly toxic hydroxyl radicals. Evidence that this sequence of events might occur specifically in β -cells was provided by Ihara et al. (11), as mentioned above. Studies by Tanaka et al. used the peroxide-sensitive probe carboxyl dichlorodihydrofluorescein diacetate and flow cytometry to examine the consequences of exposing human isolated islets to 30 mmol/l glucose for 72 h (18). Compared with 5.6 mmol/l glucose, 30 mmol/l glucose caused an increase in intracellular peroxides (Fig. 1). The same

Intracellular Peroxide Levels

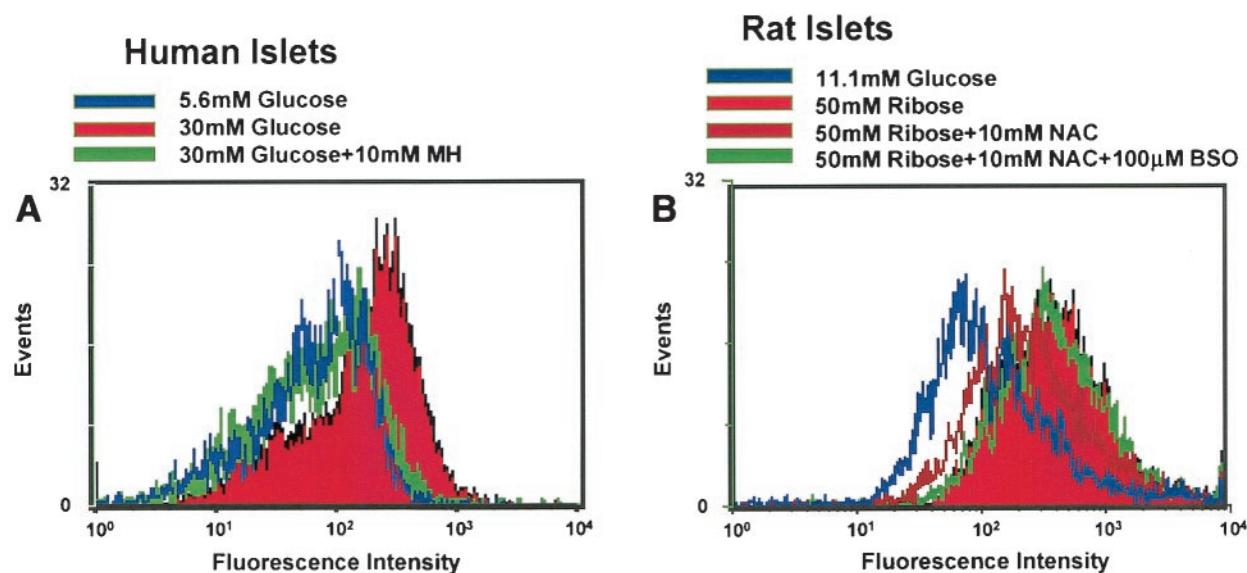


FIG. 1. Intracellular peroxide levels determined by a method involving dichlorodihydrofluorescein diacetate and flow cytometer. *A*: Isolated human islets were incubated in 5.6 or 30 mmol/l glucose with or without 10 mmol/l mannuloheptulose (MH) for 72 h to block glucose entry in the islets. Glucose (30 mmol/l) increased intra-islet peroxides, and MH blocked this increase. *B*: Isolated rat islets incubated with glucose, ribose, ribose + NAC, or ribose + NAC + buthionine sulfoxamine (BSO) for 72 h. Ribose generated increased levels of intracellular peroxides compared with glucose. The increase caused by ribose was greatly diminished by NAC, but the protective effect of NAC was completely abrogated by BSO. See the study by Tanaka et al. (18).

TABLE 2.
Antioxidant enzyme activities in islets and other tissues from rats

	Cu/Zn SOD	Mn SOD	Catalase	GPx
Liver	100 ± 7	100 ± 12	100 ± 9	100 ± 8
Kidney	104 ± 12	105 ± 12	64 ± 9	118 ± 7
Skeletal muscle	42 ± 5	50 ± 6	4 ± 1	31 ± 7
Fat	49 ± 5	84 ± 14	32 ± 5	67 ± 7
Islet	31 ± 3	25 ± 2	1 ± 0	21 ± 1

Data are means ± SD. Adapted from Tiedge et al. (20). SOD, superoxide dismutase.

phenomenon was observed in isolated rat islets, but only after pretreatment with buthionine sulfoximine, an agent that inhibits intracellular synthesis of GSH.

EVIDENCE FOR LOW ANTIOXIDANT CAPACITY OF ISLETS

Oxidative stress has been considered by many as an explanation for the tissue damage that accompanies chronic hyperglycemia. However, most of this research has been conducted in non-islet tissue. This is ironic because the islet has the lowest intrinsic antioxidant capacity compared with other metabolic tissues such as liver, kidney, skeletal muscle, and fat. Grankvist et al. (19) reported that islets contain relatively small activities for the major antioxidant enzymes Cu/Zn superoxide dismutase, Mn superoxide dismutase, catalase, and glutathione peroxidase (GPx). This observation was more recently reinforced by Tiedge et al. (20) (Table 2), who made the interesting observation that high glucose concentrations caused cellular stress in islets (as indicated by a rise in the heme oxygenase-1 protein), but did not induce higher activities of the antioxidant enzymes. This suggests that the islet is among the most vulnerable of tissues during times of oxidative stress.

EVIDENCE THAT ANTIOXIDANT DRUGS AND OVEREXPRESSION OF ANTIOXIDANT ENZYMES IN β-CELLS PROTECT AGAINST GLUCOSE TOXICITY

Many investigators have recognized the therapeutic implications of the adverse consequences on the β-cell from chronic oxidative stress in diabetes. This has led to many reports of experiments designed to assess whether antioxidant drugs can be used to protect against oxidative stress in models of type 1 and type 2 diabetes. For example, Mendola et al. (21) reported that nicotinamide and desferrioxamine partially protected islets from immune destruction during low-dose streptozotocin-induced insulinitis—a process in which hydroxyl radicals play an important role. Nomikos et al. (22) demonstrated that in vivo treatment with superoxide dismutase and catalase protected islet tissue from oxygen metabolites induced by transplantation of islet allografts. Metformin or troglitazone, both of which have antioxidant properties, prevent hyperglycemia in the ZDF rat (23,24). Fukui et al. (25) examined lipid hydroperoxide concentrations and superoxide dismutase activity and determined that troglitazone prevented increased levels of lipid hydroperoxide and superoxide dismutase activity in the OLETF rat, an animal model of type 2 diabetes. Sano et al. (26) used electron spin resonance to determine levels of ROS in vivo in

Wistar rats that received streptozotocin. They found that the spin clearance rate significantly correlated with malondialdehyde levels, a marker for lipid peroxidation, and that treatment with insulin decreased the spin clearance rate in diabetic rats. They concluded that the diabetic state enhances the generation of ROS in vivo and that glycemic control can reduce oxidative stress. Ho et al. (27) used electron spin resonance to document that alloxan generates ROS in the pancreas and that the antioxidant drug *n*-acetylcysteine (NAC) inhibits NF-κB activation and reduces hyperglycemia. Kaneto et al. (28) also demonstrated protective effects of NAC in C57BL/KsJ-*db/db* mice. As these mice developed hyperglycemia, their insulin content and insulin gene expression decreased. NAC treatment was associated with preserved insulin content and insulin mRNA as well as increased amounts of PDX-1, an important insulin gene transcription factor. The use of a weaker antioxidant, vitamin E, led to controversial results. Tajiri and Grill (29) found that vitamin E failed to restore glucose-induced insulin secretion in rat pancreatic islets transplanted under the kidney capsule in streptozotocin-induced diabetic rats. On the other hand, Ihara et al. (11), who had previously noted increased immunostaining for 8-OH-deoxyglucose and HNE-modified proteins in GK islets, found that vitamin E had beneficial effects on glycemic control in GK rats, which was accompanied by significant improvement in insulin secretion and lower levels of HbA_{1c} (30). In our studies with ZDF rats, animals were treated with the antioxidant NAC, the combined antioxidant and nitric oxide synthase inhibitor aminoguanidine, the selective nitric oxide synthase inhibitor *s*-methylisothiourea, or placebo (12). Treatment was begun at 6 weeks of age and carried through 12 weeks of age. Progressive worsening of hyperglycemia, glucose tolerance, insulin secretion, PDX-1 binding to the insulin promoter, and insulin gene expression were associated with the increase of oxidative stress markers. In contrast, the ZDF animals treated with NAC or aminoguanidine, but not *s*-methylisothiourea or placebo, developed much less hyperglycemia and had preserved PDX-1 binding, insulin gene expression, and nearly normal insulin secretion and glucose tolerance. These findings support chronic oxidative stress as a potential mechanism of action for glucose toxicity and point away from nitric oxide species as a candidate ROS in this animal model. In this context, it is interesting to recall that troglitazone, a drug that prevents glucotoxic decreases in insulin RNA levels in the ZDF animal (23,24), is also an antioxidant.

Gene overexpression experiments have been designed to test whether increased levels of antioxidant enzymes in pancreatic islets might protect against oxidative stress. Kubisch et al. (31) reported that a transgenic model with increased levels of Cu/Zn superoxide dismutase had enhanced tolerance of β-cells to oxidative stress induced by alloxan. In a later study, enhanced superoxide dismutase expression in transgenic mice was targeted specifically to pancreatic β-cells. In other experiments, the expression of the transgene significantly enhanced resistance to alloxan-induced diabetogenesis, which the authors concluded provided direct in vivo evidence that genetic variation in ROS metabolism can affect susceptibility to oxidative stress-mediated diabetogenesis (32). Benhamou et al. (33) dem-

onstrated that overexpression of catalase in human islets protected against oxidative stress induced by xanthine oxidase-hypoxanthine. Similarly, Xu et al. (34) overexpressed catalase in mouse islets and found that it protected islet insulin secretion against hydrogen peroxide and significantly reduced the diabetogenic effect of streptozotocin *in vivo*.

The beneficial effects of antioxidant gene overexpression in protecting β -cell function in a ribose-related model of type 2 diabetes was recently reported by Tanaka et al. (18). These studies focused primarily on GSH as an intracellular antioxidant. Evidence to support the importance of GSH was found in experiments wherein buthionine sulfoximine was used to inhibit GSH synthesis. This drug potentiated the adverse consequences of ribose-induced ROS generation on rat islet β -cell insulin mRNA and glucose-induced insulin secretion. Adenoviral overexpression of GSH peroxidase protected the islets from ribose-induced formation of intracellular ROS and decreases in insulin gene expression and glucose-induced insulin secretion (Fig. 2). Therefore, there is ample evidence in animal models that type 2 diabetes is associated with increased markers of oxidative stress, that glucose can increase β -cell levels of ROS, that antioxidant treatment can ameliorate hyperglycemia, and that overexpression of antioxidant enzymes in the β -cell protects against increases in oxidants in its microenvironment.

EVIDENCE THAT GLUCOSE TOXICITY AND LIPOTOXICITY ARE INTERRELATED RATHER THAN SEPARATE ADVERSE FORCES ON THE β -CELL

Because type 2 diabetes in humans is frequently associated with obesity and hyperlipidemia as well as hyperglycemia, many investigators have examined whether high levels of free fatty acids or other lipids might be harmful to islet function. Indeed, there is ample evidence that fatty acids, which under normal circumstances are physiological fuels for the β -cell, become toxic when present at elevated concentrations for prolonged periods of time (35). Adverse effects of chronic exposure of the β -cell to elevated fatty acid concentrations include decreased glucose-induced insulin secretion (36–41), impaired insulin gene expression (42–45), and increased cell death (46–52).

The mechanisms by which fatty acids impair β -cell function are largely unknown. Initially, the possibility was raised that elevated fatty acid oxidation might decrease glucose oxidation (36,38), similar to the “glucose-fatty acid cycle” described in cardiac muscles (51). However, several observations argue against such a phenomenon being operative in β -cells. Experimental evidence suggests that the deleterious effects of fatty acids are mediated via lipid-derived intracytosolic metabolites rather than by fatty acid oxidation (52). Our hypothesis, initially proposed by Prentki and Corkey (53), is that in the presence of physiological glucose concentrations, excessive fatty acids are readily disposed of through mitochondrial β -oxidation. In contrast, when both fatty acids and glucose are elevated, accumulation of metabolites derived from fatty acid esterification impairs β -cell function. This model is supported by several observations. *In vitro*, prolonged exposure of isolated rat islets to palmitate inhibits insulin gene expression only in the presence of high glucose (44).

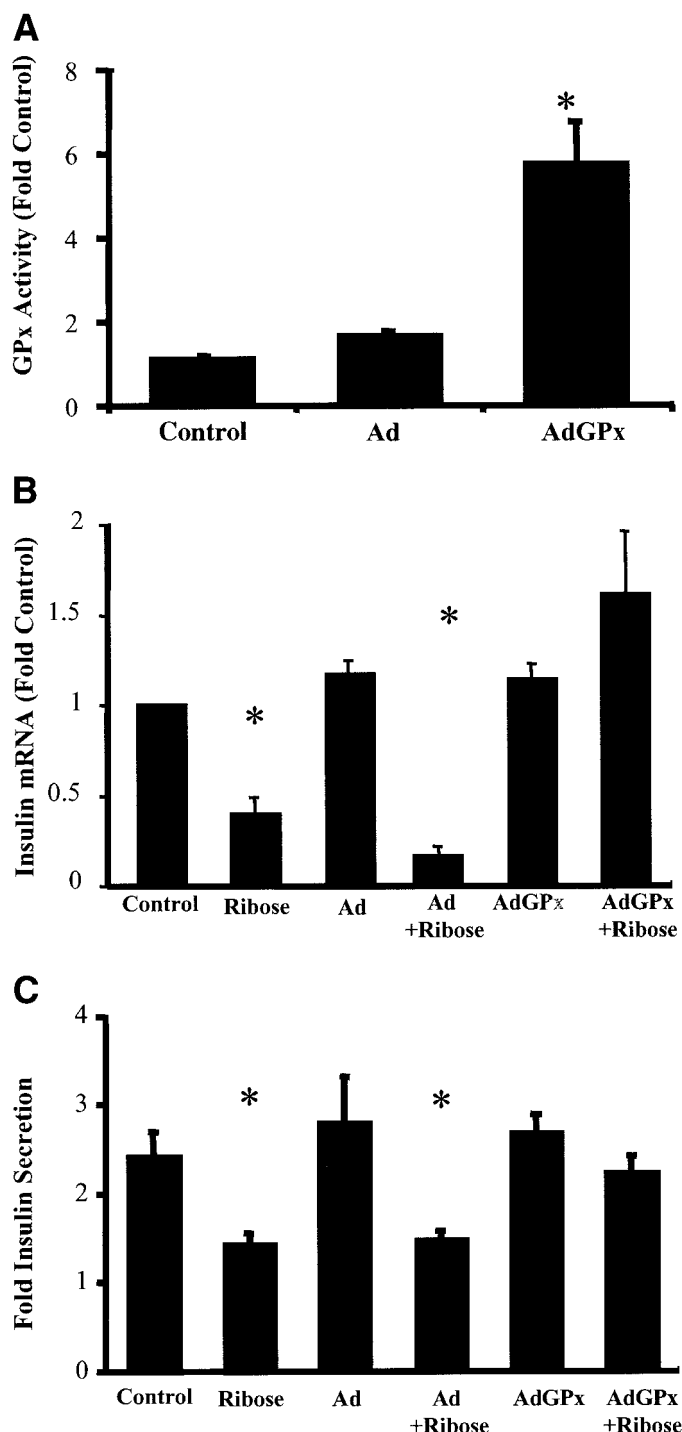


FIG. 2. Effect of overexpression of GPx by adenoviral infection for 72 h on adverse effects of oxidative stress caused by ribose on insulin gene expression and insulin secretion in isolated rat islets. **A:** Infection with adenovirus encoding GPx increased GPx activity approximately six-fold. **B:** Overexpression of GPx prevented the decrease in insulin gene expression caused by a 72-h exposure to ribose. **C:** Overexpression of GPx prevented the decrease in glucose-induced insulin secretion caused by a 72-h exposure to ribose. Ad, adenovirus control; AdGPx, adenovirus encoding GPx. *Statistically significant differences from respective controls. See the study by Tanaka et al. (18).

This is accompanied by a glucose-dependent increase in neutral lipid synthesis (45). Further, forcing triglyceride synthesis in islets by overexpression of diacylglycerol acyltransferase inhibits glucose-induced insulin secretion

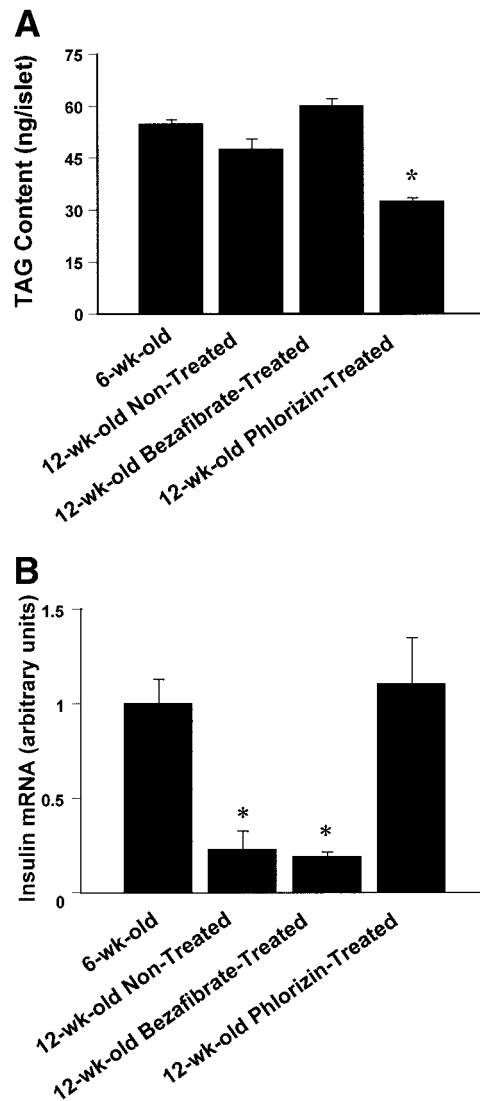


FIG. 3. Consequences of treating ZDF rats with the lipid-lowering drug bezafibrate or the glucose-lowering agent phlorizin agent for 6 weeks beginning at 6 weeks of age. Bezafibrate treatment was associated with lower plasma triglyceride (TAG), but not glucose, levels compared with nontreated controls, and phlorizin treatment was associated with lower plasma glucose, but not triglyceride, levels compared with nontreated controls at 12 weeks of age. **A:** Islet TAG content. Islet TAG content was decreased by phlorizin, but not by bezafibrate. **B:** Islet insulin mRNA levels. The decrease in islet insulin mRNA levels normally found in 12-week-old hyperglycemic control rats was prevented by phlorizin but not by bezafibrate treatment. *Statistically significant differences from 6-week-old animals. See the study by Harmon et al. (55).

after culture in high glucose, but not in low glucose (54). In vivo, the glucose-lowering agent phlorizin, but not the lipid-lowering agent bezafibrate, lowers islet triglyceride content and prevents the decrease in insulin mRNA levels in ZDF rats (Fig. 3) (55). Finally, high-fat feeding impairs glucose-induced insulin secretion in hyperglycemic GK rats, but not in normoglycemic Wistar rats, an effect prevented by normalization of blood glucose in GK rats (56). Overall, these findings support the hypothesis that lipotoxicity only occurs in the context of chronic hyperglycemia, consistent with the observation that most individuals with increased circulating lipid levels have normal β -cell function.

ACKNOWLEDGMENTS

This work was supported by National Institutes of Health Grants R01 DK-38325 (to R.P.R.) and R01 DK-58096 (to V.P.) and a Juvenile Diabetes Research Foundation advanced post-doctoral fellowship (to P.O.T.T.).

REFERENCES

- Ghiselli A, Laurenti O, De Mattia G, Maiani G, Ferro-Luzzi A: Salicylate hydroxylation as an early marker of in vivo oxidative stress in diabetic patients. *Free Radic Biol Med* 13:621–626, 1992
- Gopaul NK, Anggard EE, Mallet AI, Betteridge DJ, Wolff SP, Nourooz-Zadeh J: Plasma 8-epi-PGF α levels are elevated in individuals with non-insulin dependent diabetes mellitus. *FEBS Lett* 368:225–229, 1995
- Nourooz-Zadeh J, Tajaddini-Sarmadi J, McCarthy S, Betteridge DJ, Wolff SP: Elevated levels of authentic plasma hydroperoxides in NIDDM. *Diabetes* 44:1054–1058, 1995
- Rehman A, Nourooz-Zadeh J, Moller W, Tritschler H, Pereira P, Halliwell B: Increased oxidative damage to all DNA bases in patients with type II diabetes mellitus. *FEBS Lett* 448:120–122, 1999
- Shin CS, Moon BS, Park KS, Kim SY, Park SJ, Chung MH, Lee HK: Serum 8-hydroxy-guanine levels are increased in diabetic patients. *Diabetes Care* 24:733–737, 2001
- Sakuaba H, Mizukami H, Yagihashi N, Wada R, Hanyu C, Yagihashi S: Reduced β -cell mass and expression of oxidative stress related DNA damage in the islet of Japanese type II diabetic patients. *Diabetologia* 45:85–96, 2002
- Murakami K, Kondo T, Ohtsuka Y, Fujiwara Y, Shimada M, Kawakami Y: Impairment of glutathione metabolism in erythrocytes from patients with diabetes mellitus. *Metabolism* 38:753–758, 1989
- Sharma A, Kharb S, Chugh SN, Kakkar R, Singh GP: Evaluation of oxidative stress before and after control of glycemia and after vitamin E supplementation in diabetic patients. *Metabolism* 49:160–162, 2000
- Yoshida K, Hirokawa J, Tagami S, Kawakami Y, Urata Y, Kondo T: Weakened cellular scavenging activity against oxidative stress in diabetes mellitus: regulation of glutathione synthesis and efflux. *Diabetologia* 38:201–210, 1995
- Paolisso G, Giugliano D, Pizza G, Gambardella A, Tesaro P, Varricchio M, D'Onofrio F: Glutathione infusion potentiates glucose-induced insulin secretion in aged patients with impaired glucose tolerance. *Diabetes Care* 15:1–7, 1992
- Ihara Y, Toyokuni S, Uchida K, Odaka H, Tanaka T, Ikeda H, Hiai H, Seino Y, Yamada Y: Hyperglycemia causes oxidative stress in pancreatic β -cells of GK rats, a model of type 2 diabetes. *Diabetes* 48:927–932, 1999
- Tanaka Y, Gleason CE, Tran PO, Harmon JS, Robertson RP: Prevention of glucose toxicity in HIT-T15 cells and Zucker diabetic fatty rats by antioxidants. *Proc Natl Acad Sci U S A* 96:10857–10862, 1999
- Wolff SP, Dean RT: Glucose autooxidation and protein modification: the potential role of 'autooxidative glycosylation' in diabetes. *Biochem J* 245:243–250, 1987
- Hunt JW, Dean RT, Wolff SP: Hydroxyl radical production and autooxidative glycosylation: glucose autooxidation as the cause of protein damage in the experimental glycation model of diabetes mellitus and ageing. *Biochem J* 256:205–212, 1988
- Kaneto H, Xu G, Fujii N, Kim S, Bonner-Weir S, Weir GC: Involvement of c-Jun N-terminal kinase in oxidative stress-mediated suppression of insulin gene expression. *J Biol Chem* 277:30010–30018, 2002
- Nishikawa T, Edelstein D, Du XL, Yamagishi S, Matsumura T, Kaneda Y, Yorek MA, Beebe D, Oates PJ, Hammes HP, Giardino I, Brownlee M: Normalizing mitochondrial superoxide production blocks three pathways of hyperglycaemic damage. *Nature* 404:787–790, 2000
- Baynes JW: Role of oxidative stress in development of complications in diabetes. *Diabetes* 40:405–412, 1991
- Tanaka Y, Tran PO, Harmon J, Robertson RP: A role for glutathione peroxidase in protecting pancreatic β -cells against oxidative stress in a model of glucose toxicity. *Proc Natl Acad Sci U S A* 99:12363–12368, 2002
- Grankvist K, Marklund SL, Tajjedal IB: CuZn-superoxide dismutase, Mn-superoxide dismutase, catalase and glutathione peroxidase in pancreatic islets and other tissues in the mouse. *Biochem J* 199:393–398, 1981
- Tiedge M, Lortz S, Munday R, Lenzen S: Complementary action of antioxidant enzymes in the protection of bioengineered insulin-producing RINm5F cells against the toxicity of reactive oxygen species. *Diabetes* 47:1578–1585, 1998
- Mendola J, Wright JR Jr, Lacy PE: Oxygen free-radical scavengers and immune destruction of murine islets in allograft rejection and multiple low-dose streptozocin-induced insulinitis. *Diabetes* 38:379–385, 1989

22. Nomikos IN, Wang Y, Lafferty KJ: Involvement of O₂ radicals in 'autoimmune' diabetes. *Immunol Cell Biol* 67:85–87, 1989
23. Sreenan S, Sturis J, Pugh W, Burant CF, Polonsky KS: Prevention of hyperglycemia in the Zucker diabetic fatty rat by treatment with metformin or troglitazone. *Am J Physiol* 271:E742–E747, 1996
24. Harmon JS, Gleason CE, Tanaka Y, Oseid EA, Hunter-Berger KK, Robertson RP: In vivo prevention of hyperglycemia also prevents glucotoxic effects on PDX-1 and insulin gene expression. *Diabetes* 48:1995–2000, 1999
25. Fukui T, Noma T, Mizushige K, Aki Y, Kimura S, Abe Y: Dietary troglitazone decreases oxidative stress in early stage type II diabetic rats. *Life Sci* 66:2043–2049, 2000
26. Sano T, Umeda F, Hashimoto T, Nawata H, Utsumi H: Oxidative stress measurement in vivo electron spin resonance spectroscopy in rats with streptozotocin-induced diabetes. *Diabetologia* 41:1355–1360, 1998
27. Ho E, Chen G, Bray TM: Supplementation of N-acetylcysteine inhibits NF κ B activation and protects against alloxan-induced diabetes in CD-1 mice. *FASEB J* 13:1845–1854, 1999
28. Kaneto H, Kajimoto Y, Miyagawa J, Matsuoka T, Fujitani Y, Umayahara Y, Hanafusa T, Matsuzawa Y, Yamasaki Y, Hori M: Beneficial effects of antioxidants in diabetes: possible protection of pancreatic β -cells against glucose toxicity. *Diabetes* 48:2398–2406, 1999
29. Tajiri Y, Grill VE: Interactions between vitamin E and glucose on B-cell functions in the rat: an in vivo and in vitro study. *Pancreas* 18:274–281, 1999
30. Ihara Y, Yamada Y, Toyokuni S, Miyawaki K, Ban N, Adachi T, Kuroe A, Iwakura T, Kubota A, Hiai H, Seino Y: Antioxidant alpha-tocopherol ameliorates glycemic control of GK rats, a model of type 2 diabetes. *FEBS Lett* 473:24–26, 2000
31. Kubisch HM, Wang J, Luche R, Carlson E, Bray TM, Epstein CJ, Phillips JP: Transgenic copper/zinc superoxide dismutase modulates susceptibility to type I diabetes. *Proc Natl Acad Sci U S A* 91:9956–9959, 1994
32. Kubisch HM, Wang J, Bray TM, Phillips JP: Targeted overexpression of Cu/Zn superoxide dismutase protects pancreatic β -cells against oxidative stress. *Diabetes* 46:1563–1566, 1997
33. Benhamou PY, Moriscot C, Richard MJ, Beatrix O, Badet L, Pattou F, Kerr-Conte J, Chroboczek J, Lemarchand P, Halimi S: Adenovirus-mediated catalase gene transfer reduces oxidant stress in human, porcine and rat pancreatic islets. *Diabetologia* 41:1093–1100, 1998
34. Xu B, Moritz JT, Epstein PN: Overexpression of catalase provides partial protection to transgenic mouse β -cells. *Free Radic Biol Med* 27:830–837, 1999
35. McGarry JD, Dobbins RL: Fatty acids, lipotoxicity and insulin secretion. *Diabetologia* 42:128–138, 1999
36. Sako Y, Grill VE: A 48-hour lipid infusion in the rat time-dependently inhibits glucose-induced insulin secretion and B cell oxidation through a process likely coupled to fatty acid oxidation. *Endocrinology* 127:1580–1589, 1990
37. Elks ML: Chronic perfusion of rat islets with palmitate suppresses glucose-stimulated insulin release. *Endocrinology* 133:208–214, 1993
38. Zhou YP, Grill VE: Long-term exposure of rat pancreatic islets to fatty acids inhibits glucose-induced insulin secretion and biosynthesis through a glucose fatty acid cycle. *J Clin Invest* 93:870–876, 1994
39. Zhou YP, Grill V: Long term exposure to fatty acids and ketones inhibits B-cell functions in human pancreatic islets of Langerhans. *J Clin Endocrinol Metab* 80:1584–1590, 1995
40. Paolisso G, Gambardella A, Amato L, Tortoriello R, D'Amore A, Varricchio M, D'Onofrio F: Opposite effects of short- and long-term fatty acid infusion on insulin secretion in healthy subjects. *Diabetologia* 38:1295–1299, 1995
41. Mason TM, Goh T, Tchpashvili V, Sandhu H, Gupta N, Lewis GF, Giacca A: Prolonged elevation of plasma free fatty acids desensitizes the insulin secretory response to glucose in vivo in rats. *Diabetes* 48:524–530, 1999
42. Gremlich S, Bonny C, Waeber G, Thorens B: Fatty acids decrease IDX-1 expression in rat pancreatic islets and reduce GLUT2, glucokinase, insulin, and somatostatin levels. *J Biol Chem* 272:30261–30269, 1997
43. Ritz-Laser B, Meda P, Constant I, Klages N, Charollais A, Morales A, Magnan C, Ktorza A, Philippe J: Glucose-induced preproinsulin gene expression is inhibited by the free fatty acid palmitate. *Endocrinology* 140:4005–4014, 1999
44. Jacqueminet S, Briaud I, Rouault C, Reach G, Poitout V: Inhibition of insulin gene expression by long-term exposure of pancreatic β -cells to palmitate is dependent on the presence of a stimulatory glucose concentration. *Metabolism* 49:532–536, 2000
45. Briaud I, Harmon JS, Kelpel CL, Segu VB, Poitout V: Lipotoxicity of the pancreatic β -cell is associated with glucose-dependent esterification of fatty acids into neutral lipids. *Diabetes* 50:315–321, 2001
46. Milburn JL Jr, Hirose H, Lee YH, Nagasawa Y, Ogawa A, Ohneda M, BeltrandelRio H, Newgard CB, Johnson JH, Unger RH: Pancreatic β -cells in obesity: evidence for induction of functional, morphologic, and metabolic abnormalities by increased long chain fatty acids. *J Biol Chem* 270:1295–1299, 1995
47. Shimabukuro M, Zhou YT, Levi M, Unger RH: Fatty acid-induced β -cell apoptosis: a link between obesity and diabetes. *Proc Natl Acad Sci U S A* 95:2498–2502, 1998
48. Maedler K, Spinas GA, Dyntar D, Moritz W, Kaiser N, Donath MY: Distinct effects of saturated and monounsaturated fatty acids on β -cell turnover and function. *Diabetes* 50:69–76, 2001
49. Cnop M, Hannaert JC, Hoorens A, Eizirik DL, Pipeleers DG: Inverse relationship between cytotoxicity of free fatty acids in pancreatic islet cells and cellular triglyceride accumulation. *Diabetes* 50:1771–1777, 2001
50. Lupi R, Dotta F, Marselli L, Del Guerra S, Masini M, Santangelo C, Patane G, Boggi U, Piro S, Anello M, Bergamini E, Mosca F, Di Mario U, Del Prato S, Marchetti P: Prolonged exposure to free fatty acids has cytostatic and pro-apoptotic effects on human pancreatic islets: evidence that β -cell death is caspase mediated, partially dependent on ceramide pathway, and Bcl-2 regulated. *Diabetes* 51:1437–1442, 2002
51. Randle PJ, Garland PB, Hales CN, Newsholme EA: The glucose fatty acid cycle, its role in insulin sensitivity and the metabolic disturbances in diabetes mellitus. *Lancet* 1:785–789, 1963
52. Poitout V: Lipid partitioning in the pancreatic β -cell: physiologic and pathophysiologic implications. *Curr Opin Endocrinol Diabetes* 9:152–159, 2002
53. Prentki M, Corkey BE: Are the β -cell signaling molecules malonyl-CoA and cystolic long-chain acyl-CoA implicated in multiple tissue defects of obesity and NIDDM? *Diabetes* 45:273–283, 1996
54. Kelpel CL, Johnson LM, Poitout V: Increasing triglyceride synthesis inhibits glucose-induced insulin secretion in isolated rat islets of Langerhans: a study using adenoviral expression of diacylglycerol acyltransferase. *Endocrinology* 143:3326–3332, 2002
55. Harmon JS, Gleason CE, Tanaka Y, Poitout V, Robertson RP: Antecedent hyperglycemia, not hyperlipidemia, is associated with increased islet triacylglycerol content and decreased insulin gene mRNA level in Zucker diabetic fatty rats. *Diabetes* 50:2481–2486, 2001
56. Briaud I, Kelpel CL, Johnson LM, Tran PO, Poitout V: Differential effects of hyperlipidemia on insulin secretion in islets of Langerhans from hyperglycemic versus normoglycemic rats. *Diabetes* 51:662–668, 2002