

# Closed-Loop Insulin Delivery Using a Subcutaneous Glucose Sensor and Intraperitoneal Insulin Delivery

Feasibility study testing a new model for the artificial pancreas

ERIC RENARD, MD, PHD<sup>1</sup>  
JEROME PLACE, MSC<sup>1</sup>  
MARTIN CANTWELL, BSC<sup>2</sup>

HUGUES CHEVASSUS, PHARM<sup>3</sup>  
CESAR C. PALERM, PHD<sup>2</sup>

**OBJECTIVE** — Attempts to build an artificial pancreas by using subcutaneous insulin delivery from a portable pump guided by an subcutaneous glucose sensor have encountered delays and variability of insulin absorption. We tested closed-loop intraperitoneal insulin infusion from an implanted pump driven by an subcutaneous glucose sensor via a proportional-integral-derivative (PID) algorithm.

**RESEARCH DESIGN AND METHODS** — Two-day closed-loop therapy (except for a 15-min premeal manual bolus) was compared with a 1-day control phase with intraperitoneal open-loop insulin delivery, according to randomized order, in a hospital setting in eight type 1 diabetic patients treated by implanted pumps. The percentage of time spent with blood glucose in the 4.4–6.6 mmol/l range was the primary end point.

**RESULTS** — During the closed-loop phases, the mean  $\pm$  SEM percentage of time spent with blood glucose in the 4.4–6.6 mmol/l range was significantly higher ( $39.1 \pm 4.5$  vs.  $27.7 \pm 6.2\%$ ,  $P = 0.05$ ), and overall dispersion of blood glucose values was reduced among patients. Better closed-loop glucose control came from the time periods excluding the two early postprandial hours with a higher percentage of time in the 4.4–6.6 mmol/l range ( $46.3 \pm 5.3$  vs.  $28.6 \pm 7.4$ ,  $P = 0.025$ ) and lower mean blood glucose levels ( $6.9 \pm 0.3$  vs.  $7.9 \pm 0.6$  mmol/l,  $P = 0.036$ ). Time spent with blood glucose  $<3.3$  mmol/l was low and similar for both investigational phases.

**CONCLUSIONS** — Our results demonstrate the feasibility of intraperitoneal insulin delivery for an artificial  $\beta$ -cell and support the need for further study. Moreover, according to a semiautomated mode, the features of the premeal bolus in terms of timing and amount warrant further research.

*Diabetes Care* 33:121–127, 2010

In patients with type 1 diabetes, the near-normal glucose control required to prevent long-term complications (1,2) remains difficult to achieve (3). Indeed, the incidence of hypoglycemia increases when glucose control approaches normal glucose levels (4). For this reason the development of an “artificial pancreas” has been a goal for  $>30$  years (5,6).

An artificial  $\beta$ -cell requires three elements: a continuous insulin delivery device, a continuous glucose monitoring system, and a control algorithm linking insulin delivery to glucose measurements (3,7,8). The recent development of better performing continuous glucose sensors renewed the potential feasibility of closed-loop insulin delivery (9–11).

From the <sup>1</sup>Endocrinology Department, Le Centre Hospitalier Universitaire Montpellier and Unité Mixte de Recherche Centre National de la Recherche Scientifique 5232, University of Montpellier, Montpellier, France; <sup>2</sup>Medtronic Diabetes, Northridge, California; and <sup>3</sup>INSERM Clinical Investigation Centre 001, Le Centre Hospitalier Universitaire Montpellier, Montpellier, France.

Corresponding author: Eric Renard, renard.amtim@wanadoo.fr.

Received 12 June 2009 and accepted 10 October 2009. Published ahead of print at <http://care.diabetesjournals.org> on 21 October 2009. DOI: 10.2337/dc09-1080.

© 2010 by the American Diabetes Association. Readers may use this article as long as the work is properly cited, the use is educational and not for profit, and the work is not altered. See <http://creativecommons.org/licenses/by-nc-nd/3.0/> for details.

The costs of publication of this article were defrayed in part by the payment of page charges. This article must therefore be hereby marked “advertisement” in accordance with 18 U.S.C. Section 1734 solely to indicate this fact.

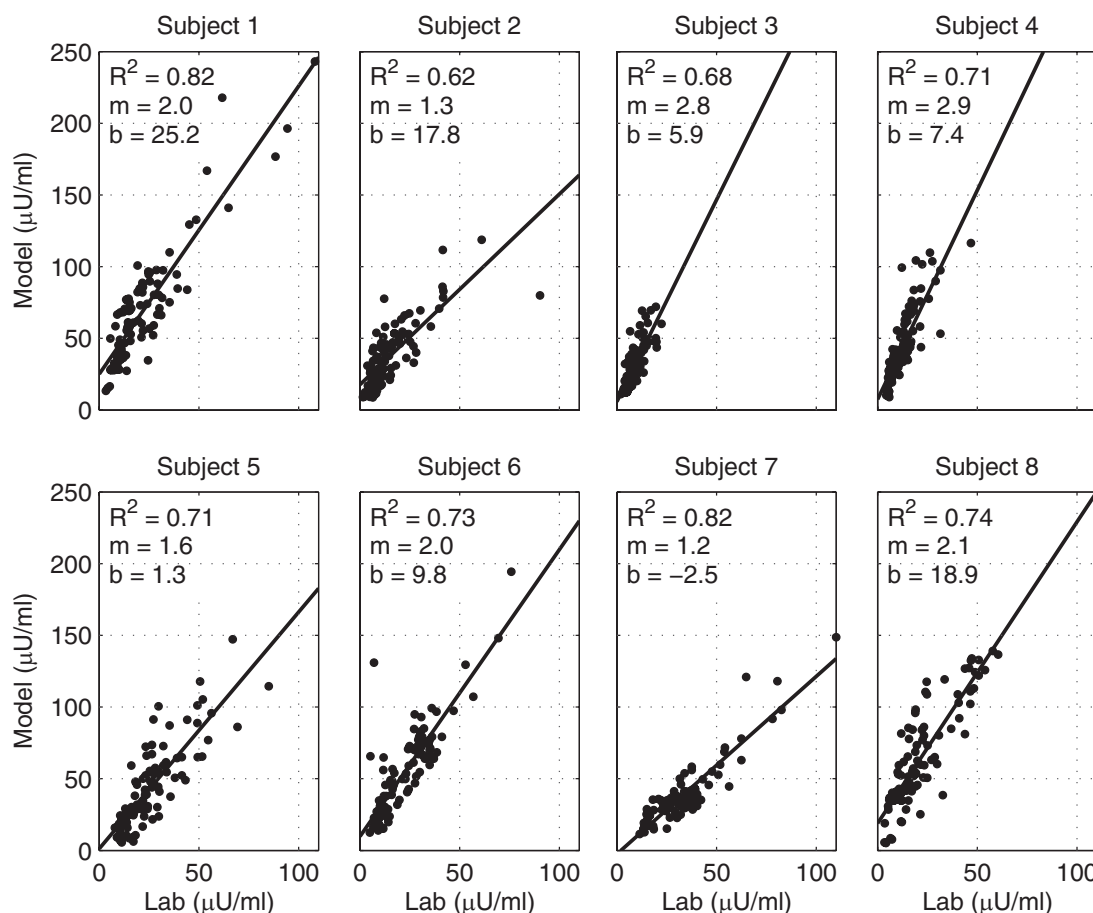
Short-term initiatives in the clinical research setting were reported in recent years but showed some limitations (12–14). Key limiting factors were, first, delays in the modulation of insulin action related to subcutaneous infusion and, second, time lags in glucose detection due to either the placement of the sensors in the interstitial compartment of subcutaneous tissue or the internal structure of implanted intravenous sensors (15). To reduce glucose deviations at mealtimes, a hybrid option of closed-loop insulin delivery includes a manual priming bolus (16).

Reported benefits of intraperitoneal insulin infusion from implantable pumps include fast insulin action and low basal plasma insulin levels, resulting in tight glucose control and a low incidence of hypoglycemic events (17). The feasibility of automated closed-loop insulin delivery from implantable pumps has been demonstrated in clinical trials performed with the Long-Term Sensor System, which coupled these devices with an intravenous glucose sensor (18).

Our approach to optimize closed-loop glucose control includes the use of closer to physiological intraperitoneal insulin delivery, subcutaneous glucose sensing, and a proportional-integral-derivative (PID) algorithm with a manual premeal bolus, resulting in a hybrid PID (HyPID) system. The objective of this study was to test the feasibility of such an approach. We investigated patients in the same controlled hospital setting while testing the HyPID system and when following their usual self-management. This approach marks a difference from the previously reported closed-loop trials, which considered home-use periods for comparison with in-clinic closed-loop studies (13,16).

## RESEARCH DESIGN AND METHODS

Eight patients with type 1 diabetes, treated by an implanted pump using intraperitoneal delivery (model MMT-2007D; Medtronic Diabe-



**Figure 1**—Correlations between measured (lab) and algorithm-estimated (model) plasma insulin levels during the closed-loop phases in each of the eight type 1 diabetic patients investigated by the HyPID system.

tes, Northridge, CA) and infusing U-400 regular insulin (Insuplant; sanofi-aventis, Paris, France) for at least 3 months, were enrolled. Inclusion criteria were the following: age 18–70 years, insulin delivery within 15% of expected accuracy for the 60 days preceding the trial, plasma anti-insulin antibody level <30% according to a radioimmunoassay of free and total anti-insulin antibody using a technique adapted from that of Palmer et al. (19), written informed consent, and health insurance coverage by the French Social Security System. Exclusion criteria were pregnancy, breast feeding, plasma creatinine >150  $\mu\text{mol/l}$ , serum alanine aminotransferase and aspartate aminotransferase above twice the highest limit of the normal range, total blood Hb <12 g/dl, any cardiovascular event during the last 6 months, any evolving ischemic or proliferative diabetic retinopathy on eye fundus examination for the previous year, and any known or suspected allergy to glucose sensor components.

The study protocol was approved by the regional ethics committee Comité de

Protection des Personnes Sud Méditerranée IV, Montpellier, France, on 11 September 2007. The study was authorized by Agence Française de Sécurité Sanitaire des Produits de Santé on 29 November 2007 and registered under the reference number 2007-A00696-47 ([www.afssaps.sante.fr](http://www.afssaps.sante.fr)).

Subjects were admitted to the hospital for a total of 86 h, which was divided into a preparation phase (14 h), a control (open-loop) phase (24 h), and a closed-loop phase (48 h). The order of the control and closed-loop phases was randomized.

At admission (day 1, 1800), two subcutaneous glucose sensors (Medtronic Diabetes), similar to those used in Medtronic's CGMS and Guardian RT systems, were inserted in the abdominal area and were calibrated against a capillary blood glucose (CBG) value 2 h after insertion and then every 4 h. The second sensor was used as a backup in case the first sensor failed to track glucose. At 2000, patients were instructed to program their insulin bolus for dinner and to remain fasting until the following morning. On

day 2, 20 min before the 800 experiment start, an intravenous catheter was placed in an antecubital vein for frequent blood sampling. Blood samples were then drawn (for later blood glucose and plasma insulin measurements) every 20 min at the start of each meal for a period of 2 h (800–1000, 1300–1500, and 1900–2100, considered as “early postprandial periods” for breakfast including 40 g carbohydrate and lunch and dinner both including 70 g carbohydrate), every hour from 800 to 2200 except for early postprandial periods, and every 2 h from 2200 to 800 (considered as “nonpostprandial periods”).

During the 24-h control phase, the patients were instructed to monitor their diabetes by seven CBG tests performed before and 2 h after each meal and at bedtime and to program their pump according to the self-monitoring data. Sensor glucose data were monitored in real time and were patient blinded.

During the 48-h closed-loop phase, the pump's insulin infusion rate was automatically modulated according to the

Table 1—Glucose control and plasma insulin levels during closed-loop and control phases in eight type 1 diabetic patients treated by implanted insulin pumps and monitored by a subcutaneous glucose sensor

	Whole period			Nonpostprandial period			Early postprandial period		
	Control	Closed-loop	95% CI	Control	Closed-loop	95% CI	Control	Closed-loop	95% CI
Blood glucose (mmol/l)	7.6 ± 0.7	7.4 ± 0.4	-1.1 to 0.5	7.9 ± 0.6	6.9 ± 0.3	-1.9 to 0.0	8.6 ± 0.9	8.8 ± 0.5	-0.9 to 1.4
Plasma insulin (mIU/l)	20.9 ± 3.5	17.7 ± 2.2	-7.9 to 1.4	11.8 ± 2.0	15.6 ± 2.1	0.9 to 6.7	30.4 ± 5.4	21.8 ± 2.7	-16.5 to -0.6
Time spent with blood glucose (mmol/l)									
>10%	21.0 ± 8.0	13.6 ± 3.3	-19.0 to 4.2	18.0 ± 7.3	9.0 ± 2.6	-21.1 to 3.2	29.9 ± 11.5	27.4 ± 6.8	-20.2 to 15.2
>6.6%	57.0 ± 8.1	51.0 ± 4.9	-16.2 to 4.1	53.8 ± 8.4	42.0 ± 6.0	-22.2 to -1.4	66.5 ± 11.9	77.7 ± 4.2	-10.7 to 33.0
≤4.4 and ≥6.6%	27.7 ± 6.2	39.1 ± 4.5	1.9 to 20.8	28.6 ± 7.4	46.3 ± 5.3	4.9 to 30.4	0.025	25.0 ± 7.0	17.7 ± 3.4
<4.4%	15.3 ± 4.6	9.9 ± 2.7	-18.2 to 7.6	17.6 ± 5.4	11.7 ± 3.5	-21.9 to 10.2	0.779	8.5 ± 5.5	4.6 ± 1.4
<3.3%	0.6 ± 0.5	1.6 ± 1.2	-2.3 to 4.3	0.6 ± 0.6	1.8 ± 1.4	-2.8 to 5.0	0.593	0.5 ± 0.5	1.0 ± 0.7
			0.686						-1.8 to 2.8
									0.593

Data are arithmetic means ± SEM and 95% CI.

algorithm. Sensor glucose data and insulin delivery rate were monitored in real time and were patient blinded. Fifteen minutes before meals, a manually programmed insulin bolus, consisting of 30% of the amount the patient would have programmed according to premeal blood glucose levels and meal carbohydrate content, was delivered.

For safety purposes, CBG tests were also performed every hour from 800 to 2200 and every 2 hours from 2200 to 800. In addition, each time the sensor glucose value decreased to <4.4 mmol/l (80 mg/dl) or increased to >13.2 mmol/l (240 mg/dl) and when patients reported symptoms of suspected hypoglycemia, a CBG test was performed. It should be noted that procedures to respond to hypoglycemia and sustained hyperglycemia were also followed during the control phase, although at home the subject might not have such close monitoring.

### System considerations

The closed-loop system is made up of three components: a subcutaneous glucose sensor, the insulin delivery algorithm (running on a laptop computer), and the intraperitoneal insulin infusion pump. The computer receives sensor data using a radiofrequency protocol and sends commands to the pump using the Bluetooth protocol. A modified personal pump communicator, set up to receive commands from a Bluetooth adapter, was used instead of the personal pump communicator used by the patient. The pump was then set to the minimum allowed basal infusion rate of 0.2 unit/h, with the algorithm delivering discrete 0.2-unit boluses as calculated based on real-time sensor glucose measurements.

The mathematical algorithm used to calculate the insulin delivery rate is based on a model of the multiphasic insulin response of a  $\beta$ -cell (20). The first version of this algorithm was described in Steil et al. (13). The version used in this study further incorporates the effect of insulin-inhibiting insulin secretion (i.e., insulin feedback) (21). The equations describing the model are

$$u(n) = P(n) + I(n) + D(n) - \gamma I_P(n)$$

$$P(n) = K_P(G_S(n) - G_T)$$

$$I(n) = I(n-1) + \frac{K_P}{\tau_I}(G_S(n) - G_T)$$

$$D(n) = K_P \tau_D G_{SD}(n)$$

$$I_p(n) = (\alpha_1 + \alpha_2)I_p(n-1) - \alpha_1\alpha_2I_p(n-2) + \frac{(1-\alpha_1)(1-\alpha_2)}{K_d}I_B(n-2),$$

where  $u(n)$  is the insulin infusion rate calculated at time step  $n$  (which is every 1 min), and the notation  $(n-1)$  denotes the previous time step. The algorithm is tuned with the parameters  $K_p$ ,  $\tau_I$ ,  $\tau_D$ , and  $\gamma$  and with  $\alpha_1$ ,  $\alpha_2$ , and  $K_{ci}$  corresponding to the intraperitoneal insulin absorption kinetics. The term  $\gamma I_p$  corresponds to the inhibition by plasma insulin concentration on the delivery of insulin. Because the pump can only deliver insulin as single 0.2-unit boluses, the amount actually delivered by the pump (as  $I_B$ ) is used to calculate the estimated plasma insulin concentration. The tuning parameters are individualized for each subject as a function of his or her total daily insulin dose. The target glucose level used for the algorithm was 100 mg/dl (5.5 mmol/l).

**Laboratory measurements**

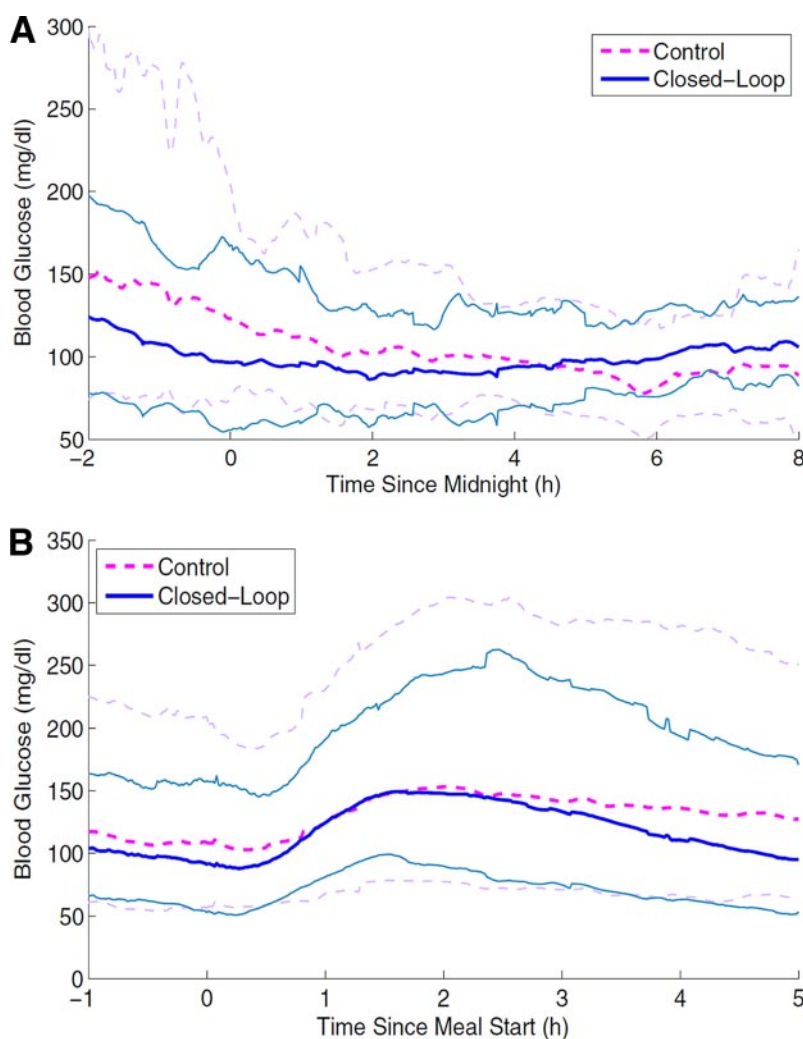
Plasma glucose concentrations were measured by hexokinase assay (Olympus, Rungis, France). CBG measurements were performed using OneTouch Ultra meters and strips (LifeScan, Milpitas, CA). Plasma insulin was measured by a specific insulin assay (bi-insulin immunoradiometric assay; Schering CIS bio international, Gif sur Yvette, France).

**Assessment of glucose control**

The primary end point was the percentage of time spent with blood glucose in the 4.4–6.6 mmol/l range. All analyses were done by using the laboratory blood glucose measurements unless otherwise noted. Secondary end points included the same index for the early postprandial periods and for the nonpostprandial periods; mean blood glucose for the overall experiment, for the early postprandial periods, and for the nonpostprandial periods; and percentage of time spent with blood glucose <3.3 mmol/l and >10 mmol/l.

**Statistical analysis**

Results are expressed as arithmetic means  $\pm$  SEM or SD when specified and 95% CIs of differences. Means were compared using the Wilcoxon signed-rank test. The level of significance was set at  $P < 0.05$ . Calculations and statistical analysis were performed using SYSTAT 10 (SPSS, Chicago, IL).



**Figure 2**—Blood glucose levels (mean 95% CI) during closed-loop (continuous lines) and control (dashed lines) phases in the eight type 1 diabetic patients investigated by the HyPID system. A: from 2200 to 0800. B: From 1 h before to 5 h after meal start.

**RESULTS**— Eight patients (seven male and one female) were enrolled. Patient characteristics were as follows (mean  $\pm$  SD): age  $59.8 \pm 8.7$  years, BMI  $26.4 \pm 3.4$  kg/m<sup>2</sup>, diabetes duration  $31.7 \pm 15.1$  years, treatment duration by implanted pump  $8.5 \pm 7.4$  years, A1C  $6.8 \pm 1.0\%$ , and daily insulin requirement  $0.60 \pm 0.21$  units  $\cdot$  kg<sup>-1</sup>  $\cdot$  day<sup>-1</sup>.

**Sensor accuracy**

Mean and median relative absolute differences ( $\pm$  SD) between paired sensor and laboratory blood glucose values were  $15.9 \pm 3.8$  and  $13.9 \pm 2.9\%$ , respectively, which are consistent with previous reports (16).

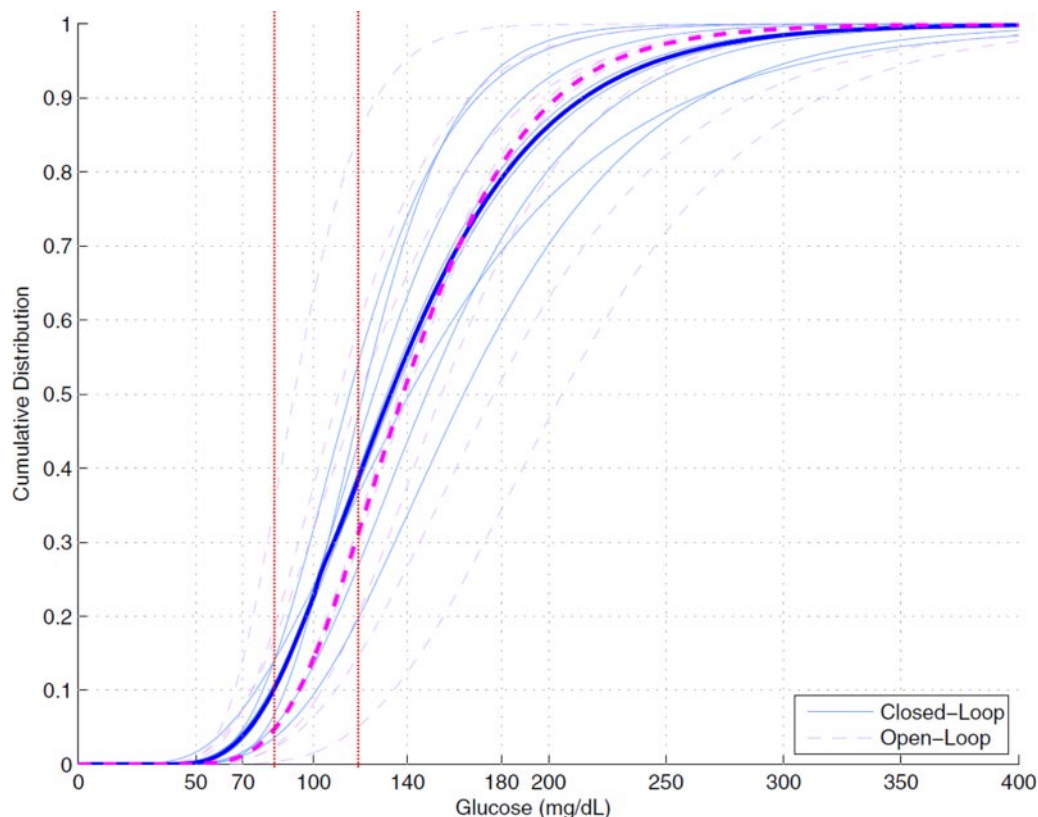
**Insulin delivery and algorithm assessment**

The correlation coefficient ( $R^2$ ) between the measured and algorithm-estimated

plasma-insulin levels was  $0.730 \pm 0.067$ . Data for each patient are shown in Fig. 1. In general, although the magnitude of the estimated levels is higher than that of the measured levels, the kinetics observed are well described by the model. The observed difference in the slope of the estimates versus the predictions may be due to specific aspects of intraperitoneal insulin infusion.

**Glucose control during control and closed-loop periods**

The distribution of blood glucose values and the mean blood glucose and plasma insulin levels are presented in Table 1. A significantly higher percentage of time was spent between 4.4 and 6.6 mmol/l during closed-loop versus control phases ( $39.1 \pm 4.5$  vs.  $27.7 \pm 6.2\%$ ,  $P = 0.05$ ), although mean blood glucose shows no



**Figure 3**—Cumulative distribution of blood glucose values during closed-loop and control (open-loop) phases in the eight type 1 diabetic patients investigated by the HyPID system. Individual data are presented as thin continuous lines during closed-loop phases and as thin dashed lines during control (open-loop) phases. Thick lines indicate the median cohort distributions of blood glucose values. Vertical red dotted lines denote the glucose range between 4.4 (80) and 6.6 (120) mmol/l (mg/dl).

significant difference. No carryover phenomenon was detected.

Tighter control was obtained for closed-loop phases in nonpostprandial periods, in which both mean blood glucose level and percentage of time spent with blood glucose between 4.4 and 6.6 mmol/l are significantly better. In contrast, early postprandial glucose control was similar during closed-loop and control periods. Of note, plasma insulin levels were significantly higher in nonpostprandial periods but significantly lower in early postprandial periods during closed-loop phases.

In the nighttime period between 2200 and 800, mean blood glucose levels and percentage of time spent between 4.4 and 6.6 mmol/l were similar (Fig. 2A). A trend to better control was observed only from 2200 to 200 during closed-loop phases ( $6.2 \pm 0.4$  vs.  $7.9 \pm 0.9$  mmol/l,  $P = 0.069$ ). Data analysis in early postprandial periods showed similar glucose peak levels and time-to-glucose peak (Fig. 2B). However, for closed-loop phases, plasma insulin peak levels were significantly lower

( $29.7 \pm 2.9$  vs.  $51.5 \pm 8.4$  mIU/l,  $P = 0.017$ ) and the time to the plasma insulin peak was longer ( $79.9 \pm 7.2$  vs.  $38.3 \pm 7.2$  min,  $P = 0.012$ ). These differences were observed similarly with all three main meals (data not shown).

Figure 3 indicates the higher mean frequency of blood glucose between 4.4 and 6.6 mmol/l during closed-loop phases. It also shows a tighter interpatient distribution of glucose values in these phases.

In terms of safety, 13 glucose deviations  $<4.4$  mmol/l were detected by the patients through suggestive symptoms and/or identified early by the glucose sensors during closed-loop phases, and 3 were detected during control phases. All events occurred in nonpostprandial periods. Of note, after oral glucose administration (10 g on average), a trend for earlier correction of blood glucose was observed during closed-loop phases ( $82.67 \pm 0.81$  vs.  $70.33 \pm 0.19$  mg/dl after 20 min).

**CONCLUSIONS**— Our study demonstrates the feasibility of closed-loop in-

sulin delivery by means of implanted insulin pumps using the intraperitoneal route and driven by subcutaneous glucose sensors and a PID algorithm. Interestingly, time spent in the near-normal glucose range is increased in comparison with that for open-loop use of this insulin therapy based on self-monitoring data and patient initiative in the same environmental conditions.

The improved glucose control obtained during the closed-loop phases represents a valuable improvement for patients whose glucose was already well controlled as indicated by their initial A1C levels of  $6.8 \pm 1.0\%$ , because it was achieved with minimal patient interaction with the system. The assessment of closed-loop effectiveness, measured by percentage of time spent in the tight near-normal glucose range, illustrates the usefulness of sensor- and algorithm-driven insulin infusion. Because hyperglycemic excursions have been associated with oxidative stress (22) and hypoglycemic deviations impair quality of life and can promote hypoglycemia unawareness, leading to the occurrence of severe hypo-

glycemia (23), an important goal for a closed-loop system is to reduce glucose deviations. In addition, reduced interpatient variability of glucose levels also merits notice. This result is valuable in terms of reproducibility and safety of the algorithm.

The main benefit on glucose control during closed-loop phases was observed in time periods excluding the early postprandial (2-h) periods. Improvement of glucose control during these periods appears to be driven mainly by higher plasma insulin levels obtained by algorithm-driven insulin delivery. The trend to a quicker return to premeal glucose levels in the late postprandial periods, i.e., >2 h after meals, can be highlighted. However, despite the manual delivery of a premeal bolus during closed-loop phases, the early postprandial period remains a challenging situation that also was not solved in previously reported closed-loop experiments (14,15).

Programming a manual bolus before meals did not seem to be as effective in our study as in a recent trial using continuous subcutaneous insulin infusion (16). Of note, in our experiments, postprandial insulin peaks were lower and later during closed-loop versus control phases. Reproduction of the dynamics of the physiological first phase of insulin secretion would require reaching higher acute plasma insulin levels corresponding both to the “cephalic phase” of insulin secretion and to the “incretin-promoted” component (24,25). Future clinical trials should evaluate the amount and timing of the manual premeal bolus to better mimic physiology. From an algorithmic consideration, we can speculate that insulin action resulting from the premeal bolus may mask the appearance of glucose, therefore delaying the increase in the insulin delivery rate by the algorithm.

Blood glucose could be maintained between 3.85 and 10 mmol/l for 85% of the time in a recently reported 24-h closed-loop trial performed on eight adolescent type 1 diabetic patients in a hospital setting by combining subcutaneous insulin infusion, subcutaneous sensing, and a PID algorithm, the two latter elements being very similar to ours, except that insulin feedback was included in our algorithm (16). Glucose control was maintained in the same range only 58% of the time in the open-loop phase performed in the home environment. Our data show that blood glucose was kept between 4.4 and 10 mmol/l for 76.5% of

the time in 48-h closed-loop phases, which was also significantly better than in the open-loop phases during which glucose was kept in the same range for 63.7% of the time. The evaluation of the open-loop period in the same hospital setting has, however, a stronger value for comparison. The large between-patient variability of glucose control, during performance of the closed-loop trial using subcutaneous insulin delivery reported by the authors, may represent a significant difference with our data obtained by intraperitoneal infusion (16). This difference in terms of blood glucose variability may be partially due to differences between these two routes of insulin delivery, which has already been reported in previous studies assessing implantable insulin pumps (17).

Hypoglycemia is a worrisome situation in closed-loop insulin delivery. In our study, hypoglycemic deviations occurred in a limited percentage of time, which was not significantly different from that in the control phase. This observation argues for the safety of the algorithm used. Moreover, because all hypoglycemic events were either detected by the patients from suggestive symptoms and/or immediately identified by the sensor, we may expect that a low-glucose warning system based on the sensor signal would be sufficient to prevent severe hypoglycemia in patients using the closed-loop algorithm at home.

In summary, our study demonstrates the feasibility, safety, and benefits on glucose control of a new alternative for closed-loop control. The reduced between-patient variability in glucose control is also worth noting. Although currently limited to a few patients in whom subcutaneous insulin delivery was considered unreliable, implanted devices for intraperitoneal insulin infusion have been shown to provide additional benefits in terms of quality of life (17). Further development is needed to improve early postprandial glucose control, requiring premeal manual intervention for bolus programming in agreement with previous trials (12,16).

**Acknowledgments**— This study was sponsored by Association Pour l'Assistance et la Réhabilitation à Domicile (APARD), a nonprofit organization in France. Medtronic provided the subcutaneous sensors and HyPID system.

C.C.P. and M.C. are employees and shareholders of Medtronic. No other potential con-

flicts of interest relevant to this article were reported.

We thank Glenn Spital (Medtronic) and Clinical Investigation Centre staff members for their valuable assistance during the study, Raymond Cartaya (Medtronic) for his help in editing the manuscript, and especially all the subjects who participated in the study.

## References

1. The Diabetes Control and Complications Trial Research Group. The effect of intensive treatment of diabetes on the development and progression of long-term complications in insulin-dependent diabetes mellitus. *N Engl J Med* 1993;329:977–986
2. Nathan DM, Cleary PA, Backlund JY, Genuth SM, Lachin JM, Orchard TJ, Raskin P, Zinman B, Diabetes Control and Complications Trial/Epidemiology of Diabetes Interventions and Complications (DCCT/EDIC) Study Research Group. Intensive diabetes management and cardiovascular disease in patients with type 1 diabetes. *N Engl J Med* 2005;353:2643–2653
3. Renard E. Implantable closed-loop glucose-sensing and insulin delivery: the future for insulin pump therapy. *Curr Opin Pharmacol* 2002;2:708–716
4. The Diabetes Control and Complications Trial Research Group. Hypoglycemia in the Diabetes Control and Complications Trial. *Diabetes* 1997;46:271–286
5. Albisser AM, Leibel BS, Ewart TG, Davidovac Z, Botz CK, Zingg W, Schipper H, Gander R. Clinical control of diabetes by the artificial pancreas. *Diabetes* 1974;23:397–404
6. Mirouze J, Selam JL, Pham TC, Cavadore D. Evaluation of exogenous insulin homeostasis by the artificial pancreas in insulin-dependent diabetes. *Diabetologia* 1977;13:273–278
7. Jaremko J, Rorstad O. Advances toward the implantable artificial pancreas for treatment of diabetes. *Diabetes Care* 1998;21:444–450
8. Clemens AH, Chang PH, Myers RW. The development of Biostator, a glucose controlled insulin infusion system (GCIS). *Horm Metab Res* 1977;(Suppl. 7):23–33
9. Hirsch IB, Abelson J, Bode BW, Fischer JS, Kaufman FR, Mastrototaro J, Parkin CG, Wolpert HA, Buckingham BA. Sensor-augmented insulin pump therapy: results of the first randomized treat-to-target study. *Diabetes Technol Ther* 2008;10:377–383
10. Maia FF, Araújo LR. Efficacy of continuous glucose monitoring system (CGMS) to detect postprandial hyperglycemia and unrecognized hypoglycemia in type 1 diabetic patients. *Diabetes Res Clin Pract* 2007;75:30–34

11. Mastrototaro J, Shin J, Marcus A, Sulur G, STAR 1 Clinical Trial Investigators. The accuracy and efficacy of real-time continuous glucose monitoring sensor in patients with type 1 diabetes. *Diabetes Technol Ther* 2008;10:385–390
12. Hovorka R. Continuous glucose monitoring and closed-loop systems. *Diabet Med* 2006;23:1–12
13. Steil GM, Rebrin K, Darwin C, Hariri F, Saad MF. Feasibility of automating insulin delivery for the treatment of type 1 diabetes. *Diabetes* 2006;55:3344–3350
14. Renard E, Costalat G, Chevassus H, Bringer J. Closed loop insulin delivery using implanted insulin pumps and sensors in type 1 diabetic patients. *Diabetes Res Clin Pract* 2006;74(Suppl. 2):S173–S177
15. Steil GM, Panteleon AE, Rebrin K. Closed-loop insulin delivery—the path to physiological glucose control. *Adv Drug Deliv Rev* 2004;56:125–144
16. Weinzimer SA, Steil GM, Swan KL, Dziura J, Kurtz N, Tamborlane WV. Fully automated closed-loop insulin delivery versus semiautomated hybrid control in pediatric patients with type 1 diabetes using an artificial pancreas. *Diabetes Care* 2008;31:934–939
17. Renard E, Schaepelynck-Bélicar P, EVADIAC Group. Implantable insulin pumps. A position statement about their clinical use. *Diabetes Metab* 2007;33:158–166
18. Renard E, Costalat G, Chevassus H, Bringer J. Artificial  $\beta$ -cell: clinical experience toward an implantable closed-loop insulin delivery system. *Diabetes Metab* 2006;32(5 Pt. 2):497–502
19. Palmer JP, Asplin CM, Clemons P, Lyen K, Tatpati O, Raghu PK, Paquette TL. Insulin antibodies in insulin-dependent diabetes before treatment. *Science* 1983;222:1337–1339
20. Steil GM, Rebrin K, Janowski R, Darwin C, Saad MF. Modeling  $\beta$ -cell insulin secretion—implications for closed-loop glucose homeostasis. *Diabetes Technol Ther* 2003;5:953–964
21. Palmieri CC. Physiologic insulin delivery with insulin feedback: a control systems perspective. In *Proceedings of the 7th IFAC Symposium on Modeling and Control in Biomedical Systems, Aalborg, Denmark, 2009*, Laxenburg, Austria, International Federation of Automatic Control, p. 31–36
22. Monnier L, Mas E, Ginet C, Michel F, Villon L, Cristol JP, Colette C. Activation of oxidative stress by acute glucose fluctuations compared with sustained chronic hyperglycemia in patients with type 2 diabetes. *JAMA* 2006;295:1681–1687
23. Cryer PE. Mechanisms of hypoglycemia-associated autonomic failure and its component syndromes in diabetes. *Diabetes* 2005;54:3592–3601
24. Åhrén B, Holst JJ. The cephalic insulin response to meal ingestion in humans is dependent on both cholinergic and non-cholinergic mechanisms and is important for postprandial glycemia. *Diabetes* 2001;50:1030–1038
25. Festa A, Williams K, Hanley AJ, Haffner SM.  $\beta$ -Cell dysfunction in subjects with impaired glucose tolerance and early type 2 diabetes: comparison of surrogate markers with first-phase insulin secretion from an intravenous glucose tolerance test. *Diabetes* 2008;57:1638–1644