

Objectively Measured Time Spent Sedentary Is Associated With Insulin Resistance Independent of Overall and Central Body Fat in 9- to 10-Year-Old Portuguese Children

LUIS B. SARDINHA, PHD¹
LARS BO ANDERSEN, PHD²
SIGMUND A. ANDERSSON, PHD²
ANA L. QUITÉRIO, MSc¹

RUI ORNELAS, MSc³
KARSTEN FROBERG, PHD⁴
CHRIS J. RIDDOCH, PHD⁵
ULF EKELUND, PHD^{6,7}

OBJECTIVE — We examined the independent relationships between objectively measured physical activity and insulin resistance in Portuguese children.

RESEARCH DESIGN AND METHODS — This is a school-based, cross-sectional study in 147 randomly selected girls (aged 9.8 ± 0.3 years; $27.8 \pm 9.3\%$ body fat) and 161 boys (aged 9.8 ± 0.3 years; $22.0 \pm 9.2\%$ body fat). Physical activity was assessed by the Actigraph accelerometer for 4 days and summarized as time spent sedentary (accelerometer counts $<500/\text{min}$), in light-intensity (accelerometer counts $500\text{--}2,000/\text{min}$), and in moderate- and vigorous-intensity activity (accelerometer counts $>2,001/\text{min}$). We measured total and central fat mass by dual-energy X-ray absorptiometry. Insulin resistance was expressed as the homeostasis model assessment score.

RESULTS — Time (min/day) spent sedentary was significantly and positively associated with insulin resistance (β -coefficient = 0.001 [95% CI 0.0002–0.002]; $P = 0.013$). Time spent in moderate- and vigorous-intensity physical activity (-0.002 [-0.003 to -0.001]; $P = 0.0009$) and overall physical activity (-0.001 [-0.008 to 0.003]; $P < 0.0001$) were significantly and inversely associated with insulin resistance. All associations remained statistically significant, although they were attenuated after further adjustments for sex, birth weight, sexual maturity, and total or central fat mass ($P < 0.03$).

CONCLUSIONS — Physical activity is associated with insulin resistance independent of total and central fat mass in children. Our results emphasize the importance of decreasing sedentary behavior and increasing time spent in moderate- and vigorous-intensity activity in children, which may have beneficial effects on metabolic risk factors regardless of the degree of adiposity.

Diabetes Care 31:569–575, 2008

From the ¹Faculty of Human Movement, Technical University of Lisbon, Lisbon, Portugal; the ²Department of Sports Medicine, Norwegian School of Sports Sciences, Oslo, Norway; the ³Department of Physical Education and Sport, University of Madeira, Madeira, Portugal; the ⁴Department of Sports Science and Clinical Biomechanics, University of Southern Denmark, Odense, Denmark; the ⁵Department of Sport and Exercise Science, Bath University, Bath, U.K.; the ⁶Medical Research Council Epidemiology Unit, Institute of Metabolic Science, Addenbrooke's Hospital, Cambridge, U.K.; and the ⁷School of Health and Medical Sciences, Örebro University, Örebro, Sweden.

Address correspondence and reprint requests to Ulf Ekelund, Medical Research Council Epidemiology Unit, Institute of Metabolic Science, Addenbrooke's Hospital, Box 285, CB2 0QQ, Cambridge, U.K. E-mail: ulf.ekelund@mrc-epid.cam.ac.uk.

Received for publication 16 September 2007 and accepted in revised form 1 December 2007.

Published ahead of print at <http://care.diabetesjournals.org> on 10 December 2007. DOI: 10.2337/dc07-1286.

Abbreviations: DEXA, dual-energy X-ray absorptiometry; HOMA-IR, homeostasis model assessment of insulin resistance; MVPA, moderate- and vigorous-intensity physical activity.

© 2008 by the American Diabetes Association.

The costs of publication of this article were defrayed in part by the payment of page charges. This article must therefore be hereby marked "advertisement" in accordance with 18 U.S.C. Section 1734 solely to indicate this fact.

The prevalence of childhood overweight and obesity is increasing at an alarming rate worldwide (1–4). Excessive body fat is associated with numerous adverse health consequences, including impaired glucose tolerance, hyperinsulinemia, and type 2 diabetes. Central obesity and especially visceral fat are recognized to predispose children and adolescents to the development of insulin resistance and type 2 diabetes (5,6).

Physical activity may counteract the adverse effect of obesity on insulin resistance in children. Previous studies examining the associations between physical activity and insulin resistance have been conducted in overweight children (7) or in children predisposed to type 2 diabetes due to a family history of the disease (8). Furthermore, most previous observational studies (9–12) have used relatively imprecise self-report methods to assess physical activity, which preclude the ability to quantify dose-response associations and determine the influence of different subcomponents (time spent sedentary and at light-, moderate-, and vigorous-intensity activity) of physical activity on insulin resistance. It is also unclear whether physical activity is associated with insulin resistance independent of overall and central adiposity (8,10–12), and some (9) have suggested a sex difference for the association between activity with insulin resistance.

We have previously shown that objectively measured overall physical activity is associated with insulin sensitivity in Danish 9- to 10-year-old children (13). However, that study did not assess which of the subcomponents of physical activity were related to insulin sensitivity, with skinfold measurements used as an indicator of overall adiposity. Dual-energy X-ray absorptiometry (DEXA) can be used to quantify both overall and central fat mass (14–16), which makes this method preferable to skinfold measurements. Therefore, the aim of the present study

was to examine the independent relationships between objectively measured physical activity and insulin resistance in Portuguese children.

RESEARCH DESIGN AND METHODS

This is a cross-sectional, population-based study in 9- to 10-year-old Portuguese children who were part of the European Youth Heart Study; selection criteria has been reported elsewhere (17). A total of 530 healthy children from the county of Madeira, Portugal, were sampled and invited to participate in the study, along with their parents. Of these, 72 children refused to wear the activity monitor, 96 children were excluded due to not meeting the inclusion criteria (see below), and 37 children were excluded due to faulty activity monitors. Complete anthropometric, body composition, and clinical and physical activity measurements were available in 308 (147 girls and 161 boys) children. There were no significant differences ($P > 0.05$) in body weight, height, BMI, sum of skinfolds, waist circumference, fasting triglycerides, insulin, glucose, HDL cholesterol, and cardio-respiratory fitness between those with complete data compared with the rest of children. After written informed consent was obtained from a parent or guardian, and all data were collected at the University of Madeira.

Anthropometric and body composition measurements

Height was measured, without shoes, to the nearest 0.5 cm using a portable Harpenden stadiometer. Weight was measured to the nearest 0.1 kg with a calibrated-beam balance scale while the children were wearing light clothing. BMI was calculated as a weight in kilograms divided by the square of height in meters. Overweight and obesity was defined according to age-specific cut points (18). Waist circumference was measured twice with a metal anthropometric tape midway between the lower rib margin and the iliac crest at the end of a gentle expiration, and the average of the two measures was used for analysis. DEXA was used to assess total and regional body composition (QDR-1500; Hologic, Waltman, MA) (pencil-beam mode, software version 5.67 enhanced whole-body analysis). Following the protocol for DEXA described by the manufacturer, a step phantom with six fields of acrylic and aluminum of varying thickness and known absorptive properties was scanned alongside each

subject to serve as an external standard for the analysis of different tissue composition. Fat-free mass was defined as the sum of the fat-free soft tissue and total-body mineral content from the whole-body scans. The same technician positioned the children, performed the scans, and completed the scan analysis according to the operator's manual using the standard analysis protocol.

Sexual maturation was assessed by the investigators, using Tanner's five-stage scale for breast development in girls and pubic hair in boys (19). Children were stratified as prepubertal (Tanner stage 1) or having started puberty (Tanner stages 2 and 3). Data on birth weight, parental socioeconomic status, body weight, and height were collected by self-report.

Blood samples

After a 12-h overnight fast, venous blood samples were taken from the antecubital vein and collected into EDTA vacutainer tubes. Samples were aliquoted and separated within 30 min and stored at -80°C until transport to World Health Organization-certified laboratories for analyses (Cambridge, U.K.). Samples were analyzed for serum glucose and insulin. Glucose was analyzed using the hexokinase method, measured on an Olympus AU600 autoanalyser for all samples (Olympus Diagnostica, Hamburg, Germany). Plasma-specific insulin was determined by two-site immunometric assays with either ^{125}I or alkaline phosphatase labels. Cross-reactivity was $<0.2\%$ with intact proinsulin at 400 pmol/l and $<1\%$ with 32–33 split proinsulin at 400 pmol/l. Interassay coefficients of variation were 6.6% at 28.6 pmol/l ($n = 99$), 4.8% at 153.1 pmol/l ($n = 102$), and 6.0% at 436.7 pmol/l ($n = 99$), respectively.

The homeostasis model assessment of insulin resistance (HOMA-IR) was calculated by dividing the product of fasting glucose (mmol/l) and fasting insulin ($\mu\text{U}/\text{ml}$) by 22.5 (20). This method serves as a valuable surrogate for the assessment of insulin resistance in nondiabetic children (21). We defined insulin resistance as HOMA-IR >3.16 (22).

Assessment of physical activity

Physical activity was assessed using the computer science and applications accelerometer, also known as the MTI Actigraph (Manufacturing Technology, Fort Walton Beach, FL), over 2 weekdays and 2 weekend days, as previously described (23). Briefly, the children wore the accel-

erometer attached to an elastic waistband on the right hip; volunteers were instructed to wear the monitors during the daytime, except while sleeping, bathing, and during aquatic activities. Activity data were stored on a minute-by-minute basis and were downloaded to a computer before analysis. Physical activity components, including wearing time, were derived as previously described (24), using a special written software (MAHUFFE [available at www.mrc-epid.cam.ac.uk]). We first deleted missing data defined as sequences of ≥ 10 consecutive 0s. We thereafter excluded from analysis all children who did not manage to record ≥ 600 min/day of activity for ≥ 3 days. The following variables were derived from the software: total volume of physical activity (counts/min/day) and time (min/day) spent in sedentary activities (<500 counts/min) and at light-intensity (500–1,999 counts/min), moderate-intensity ($\geq 2,000$ counts/min), and vigorous-intensity ($\geq 3,000$ counts/min) physical activity. Children spent $<3\%$ of the daytime at a vigorous-intensity level. Therefore, time spent in moderate- and vigorous-intensity activities were combined into one single variable (moderate- and vigorous-intensity physical activity [MVPA]). Our threshold for MVPA ($>2,000$ counts/min) corresponds to a walking speed of $\sim 3\text{--}4$ km/h (21).

Statistical methods

Data are presented as means \pm SD. All variables were checked for normality. Fasting insulin and HOMA-IR were logarithmically transformed to normalize their distribution. Differences in body composition variables, physical activity patterns, and biochemical variables between sexes were determined by ANOVA. Pearson's correlation coefficients were used to examine the bivariate associations between insulin resistance (HOMA-IR) and each of the physical activity components. Multiple linear regression analysis was used to test the independent associations between physical activity variables and insulin resistance. Model building was performed by first assessing the associations between sex, sexual maturity, and birth weight with insulin resistance, thereafter introducing the subcomponents of physical activity in separate models, as some of these variables were highly correlated with each other ($r > 0.70$). All physical activity subcomponents were adjusted for the amount of time the monitor was worn. Finally, we adjusted our mod-

Table 1—Physical characteristics of the children

	All	Boys	Girls
<i>n</i>	308	161	147
Age (years)	9.81 ± 0.3	9.81 ± 0.3	9.82 ± 0.3
Weight (kg)	34.1 ± 7.8	34.3 ± 7.7	33.9 ± 7.8
Height (m)	1.37 ± 0.1	1.37 ± 0.1	1.37 ± 0.1
BMI (kg/m ²)	18.0 ± 3.1	18.1 ± 3.2	17.9 ± 3.0
Waist circumference (cm)	61.5 ± 7.3	63.4 ± 7.3	59.4 ± 6.6*
Birth weight (kg)	3.40 ± 0.52	3.46 ± 0.55	3.32 ± 0.48†
Total physical activity (counts/min)	654 ± 240	724 ± 268	577 ± 178*
Sedentary activity (min/day)	315 ± 90	307 ± 95	323 ± 84
Light activity (min/day)	287 ± 49	278 ± 47	296 ± 49*
Moderate and vigorous activity (min/day)	177 ± 64	195 ± 67	157 ± 54†
Fat mass (kg)	9.10 ± 5.6	8.19 ± 5.6	10.1 ± 5.4†
Fat mass (%)	24.8 ± 9.4	21.9 ± 9.0	28.0 ± 8.8*
Trunk fat mass (kg)	2.82 ± 2.5	2.39 ± 2.5	3.29 ± 2.5†
Central fat mass (kg)	0.67 ± 0.6	0.59 ± 0.5	0.77 ± 0.5†
Glucose (mmol/l)	5.2 ± 0.3	5.2 ± 0.3	5.2 ± 0.4
Insulin (μU/ml)	6.1 ± 3.5	5.3 ± 2.8	7.0 ± 3.9*
HOMA-IR	1.21 (1.10–1.32)	1.09 (0.99–1.19)	1.38 (1.26–1.50)*

Data are means ± SD or geometric means (95% CI). * $P < 0.001$ and † $P < 0.05$ for sex differences.

els for total fat mass or central fat mass assessed by DEXA. We included the interaction term sex by physical activity separately for each physical activity component model in order to explore whether sex or sexual maturity modified any of the associations between physical activity and insulin resistance. Similarly, a three-way interaction term (sex times sexual maturation times physical activity) was also introduced into the respective models. Finally, we introduced socioeconomic status and parental BMI and substituted fat mass by waist circumference as potential confounding variables, but adjustment for these variables did not change the magnitude or direction of associations and were therefore excluded from our final models. All data were analyzed in their continuous form but were stratified into quartiles of time spent sedentary and at MVPA for illustrative purposes. Data were analyzed using the Statistical Package for Social Sciences (SPSS version 13.0 for Windows; SPSS, Chicago, IL), and the level of significance was set at $P < 0.05$.

RESULTS— Descriptive characteristics are presented in Table 1. Age, weight, height, and BMI did not differ significantly between boys and girls. Total and regional body fat, percentage fat mass, fasting insulin, and HOMA-IR were significantly higher in girls than in boys. Significant sex differences were also observed for physical activity compo-

nents. Boys spent significantly less time at light-intensity activity and more time at MVPA than girls. Time spent sedentary did not differ significantly between boys and girls. A total of 18.5% of children (20.4% girls and 16.8% boys) were classified as overweight, and an additional 8.8% children (8.2% girls and 9.3% boys) were obese. Fifteen children (three normal weight, three overweight, and nine obese) were insulin resistant.

Time spent sedentary was significantly correlated with time spent at light-intensity activity ($r = -0.15$, $P = 0.008$) and with time spent at MVPA ($r = -0.70$, $P < 0.0001$). Time spent at light-intensity activity was not correlated with time spent at moderate- and vigorous-intensity activity ($r = 0.05$, $P = 0.50$). Time spent sedentary was significantly and positively associated with fasting insulin ($r = 0.21$, $P < 0.0001$) and HOMA-IR ($r = 0.21$, $P < 0.0001$). Time spent at moderate- and vigorous-intensity physical activity was significantly and inversely correlated with fasting insulin and HOMA-IR ($r = -0.23$ and -0.24 , respectively; $P < 0.0001$). Similarly, total physical activity (counts/min) was also significantly and inversely associated with fasting insulin and HOMA-IR ($r = -0.27$ and -0.28 , respectively; $P < 0.0001$). All associations were attenuated but were still statistically significant after further adjustment for sex and monitored time (partial $r = <0.05$). Time spent at light intensity was not associated with fasting insulin ($r =$

0.10, $P = 0.08$) or HOMA-IR ($r = 0.10$, $P = 0.08$), and these nonsignificant associations remained after further adjustment for sex and monitored time.

Table 2 displays the regression coefficients (95% CI) for the association between subcomponents of physical activity and insulin resistance. Time spent sedentary was significantly and positively associated with HOMA-IR ($P = 0.013$) after adjustment for sex, sexual maturity, and birth weight. Total physical activity ($P < 0.0001$) and time spent at moderate-intensity activity ($P = 0.0009$) were also significantly but inversely associated with HOMA-IR after adjustment for the same confounders as above. No association was observed between time spent at light-intensity activity and insulin resistance and no significant two- or three-way interactions were observed for any of our models.

We thereafter adjusted our models for total fat mass or central fat mass (Table 2). These adjustments attenuated the associations between physical activity variables and insulin resistance. However, time spent sedentary was positively associated with HOMA-IR after further adjustments for total or central fat mass ($P = 0.027$), and time spent in MVPA ($P = 0.011$) and overall physical activity ($P = 0.007$) were significantly and inversely associated with HOMA-IR after adjustment for total or central fat mass. Physical activity variables explained 8–9% of the variance in HOMA-IR with a full model including

Table 2—Multiple linear regression coefficients (95% CI) for the association between objectively measured components of physical activity with insulin resistance (HOMA-IR) in Portuguese children (n = 308)

Outcome (HOMA-IR)	Model 1		Model 2		Model 3	
	β-Coefficient (95% CI)	P value	β-Coefficient (95% CI)	P value	β-Coefficient (95% CI)	P value
Sex (girls)	0.370 (0.22–0.52)	<0.0001	0.18 (0.04–0.31)	0.01	0.20 (0.07–0.33)	0.001
Sexual maturity (Tanner 1)	–0.410 (–0.59 to –0.23)	<0.0001	–0.17 (–0.33 to –0.004)	0.045	–0.19 (–0.35 to –0.02)	0.025
Birth weight (kg)	–0.060 (–0.18–0.06)	0.33	–0.14 (–0.24 to –0.03)	0.013	–0.10 (–0.21 to 0.006)	0.065
Fat mass (kg)	—	—	0.05 (0.04–0.06)	<0.0001	—	—
Central fat mass (kg)	—	—	—	—	0.48 (0.38–0.59)	<0.0001
Total physical activity (cpm)	–0.001 (–0.008 to –0.003)	<0.0001	–0.0003 (–0.0006 to –0.00001)	0.007	–0.0003 (–0.0006 to –0.00009)	0.007
Sedentary (min/day)	0.001 (0.0002–0.002)	0.003	0.001 (0.000001–0.002)	0.012	0.0008 (0.00009–0.002)	0.009
Light (min/day)	0.0003 (–0.001 to 0.002)	0.75	–0.0002 (0.002 to 0.001)	0.81	–0.0002 (–0.002 to 0.001)	0.76
MVPA (min/day)	–0.002 (–0.003 to –0.001)	0.002	–0.001 (–0.002 to –0.0003)	0.017	–0.001 (–0.003 to –0.001)	0.022

Model 1 adjusted for sex, sexual maturity, and birth weight. Model 2 additionally adjusted for overall fat mass. Model 3 additionally adjusted for central fat mass. Time variables are additionally adjusted for measurement time.

sex, sexual maturity, birth weight, and total fat mass, explaining between 32 and 34% of the variance in HOMA-IR (data not shown). We thereafter substituted waist circumference for central fat mass and reanalysed our models, but this did not materially change the results.

Figure 1 shows the adjusted geometric means of HOMA-IR stratified by quartiles of time spent sedentary (Fig. 1A) (*P* for trend = 0.043) and time spent at MVPA (Fig. 1B) (*P* for trend = 0.11). Post hoc analyses revealed significant differences (*P* < 0.05) between the first and fourth quartile for time spent sedentary and at moderate and vigorous intensity.

CONCLUSIONS — This is the first study suggesting that objectively measured time spent sedentary is associated with insulin resistance in 9- to 10-year-old healthy, prepubertal children, independent of sex, birth weight, sexual maturity, and total or central fat mass. Further, these associations were consistent for both continuous and categorical analyses and suggest that reducing sedentary behavior and increasing the amount of time spent at MVPA may have beneficial effects on insulin resistance in healthy children.

When interpreting the results from this study, the following limitations need consideration. First, our study was cross-sectional, thus limiting inferences of causality and its direction. Second, although we controlled for the confounding effect of sex, sexual maturity, birth weight, and total or central fat mass, it is possible that other unmeasured confounders such as genetic variation and dietary factors could explain our findings. Third, our results may only be generalizable to Portuguese 9- to 10-year-old children. However, given the increasing evidence of an independent association between objectively measured physical activity and metabolic risk factors in children and adolescents (13,25,26), it is likely that our results are generalizable to a large proportion of healthy children living in affluent societies. Even though we assessed physical activity using an objective and valid method (27), some limitations remain. The monitor must be removed during bathing and other water activities, and it does not accurately pick up upper-body movement and other activities that involve minimal vertical acceleration of the body, such as cycling. Furthermore, limitations are inherent in all intensity thresholds used to summarize accelerometry data (28); how-

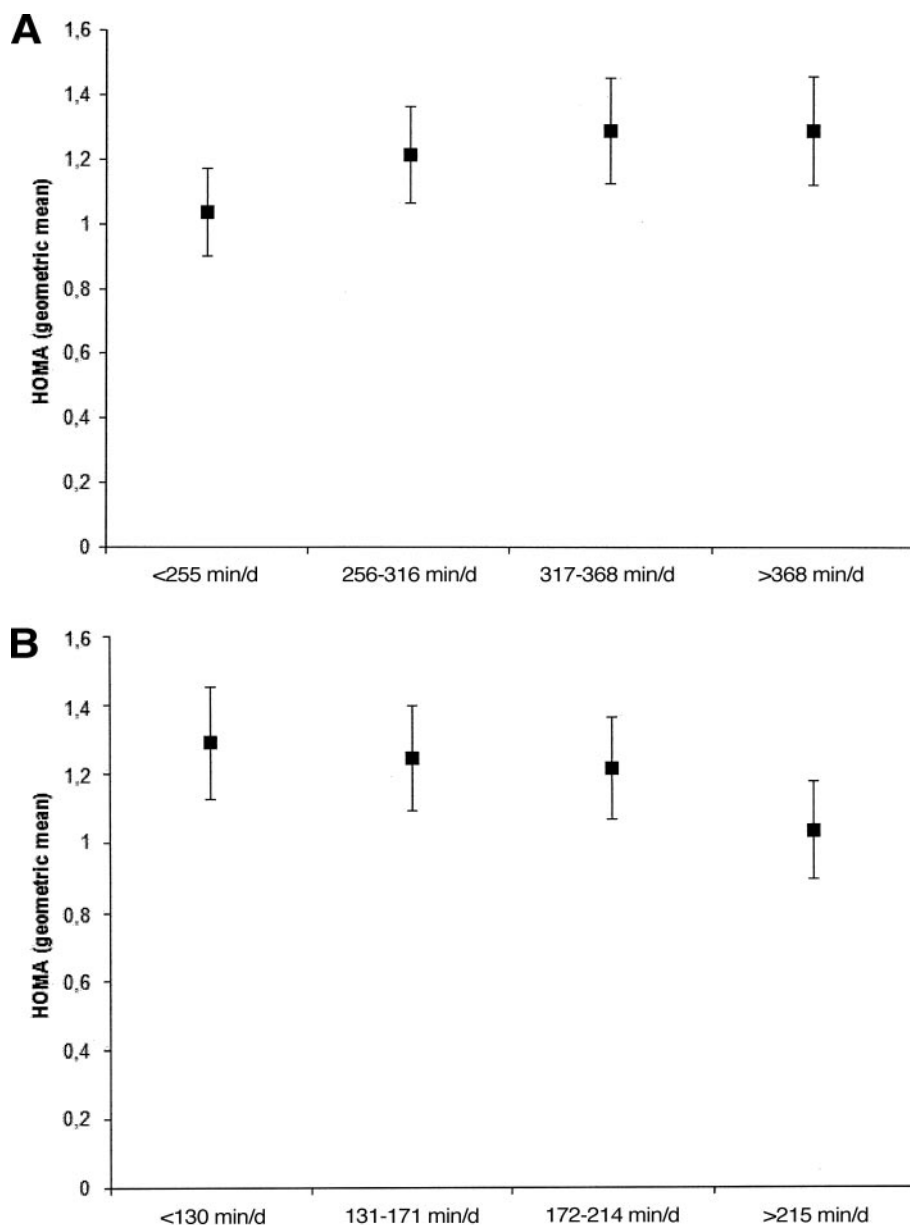


Figure 1—Adjusted geometric means of HOMA-IR stratified by quartiles of time spent sedentary (A) (P for trend = 0.043) and time spent at MVPA (B) (P for trend = 0.11) in 9- to 10-year-old Portuguese children ($n = 308$). Post hoc analyses revealed significant differences ($P < 0.05$) between the first and fourth quartile for time spent sedentary and at moderate and vigorous intensity. Data are adjusted for sex, sexual maturity, birth weight, and fat mass.

ever, our threshold for moderate- and vigorous-intensity activity is consistent with our previous studies (23,26). The threshold used for time spent sedentary is a compromise between the lowest (<100 cpm) (29) and highest (<1,100 cpm) (30) published sedentary cut points. However, reanalysing our data using the lower cut point (<100 cpm) did not change any of our results. We used a 1-min epoch when assessing physical activity by accelerometry, this may be a potential limitation as this epoch length may

underestimate the amount of time spent in vigorous-intensity activity in children (31). However, it is highly unlikely that this would change the direction of the observed associations, but it may attenuate them. Regardless, the use of an objective method for assessing physical activity and its subcomponents in this study must be considered a major strength. Other strengths include our precise measure of total and central fat mass by DEXA and the collection of fasting blood samples in a randomly selected population of young

children. Our results also highlight the limitations of using BMI as a measure of body composition when comparing differences between sexes. Indeed, fat mass and percentage body fat measured by DEXA were significantly higher in girls than in boys, whereas there was no difference in BMI. Furthermore, we did not observe any difference in height between sexes, which may have contributed to the nonsignificant difference in BMI.

Nine children (five girls and four boys) did not accumulate ≥ 60 min of moderate-intensity physical activity according to current recommendations of health-enhancing physical activity in youth (32,33). However, we have recently suggested that physical activity levels may need to be higher than the current guidelines of 1 h of moderate-intensity physical activity per day (26). Our study was not powered to examine nonlinearity; thus, studies that seek to determine whether there is a threshold for the association between physical activity and insulin resistance in children are required. Regardless, these results support our previous findings (13), underscoring the importance of reducing sedentary time in relation to insulin resistance in children.

Evidence from exercise-training studies in obese children suggests that moderate- and vigorous-intensity exercise is associated with a favorable metabolic profile (7). Some (9–13), but not all (8), previous observational studies have reported an independent association between physical activity and insulin sensitivity in children. For example, subjectively measured physical activity was significantly associated with fasting insulin and insulin sensitivity independent of age, sex, race, maturation, BMI, percent body fat, waist circumference, and lipid levels in 10- to 16-year-old children (10). Further, Ku et al. (34) observed an association between insulin sensitivity and vigorous-intensity but not with moderate-intensity physical activity, independent of body fat and fat distribution. However, these studies assessed physical activity by self-report, which may limit the ability to accurately examine the influence of different subdivisions of physical activity, as these are likely to be reported with different degrees of error. Furthermore, the validity of self-reported physical activity in children is usually considered to be poor (35).

Previous studies from the European Youth Heart Study have examined the association between objectively measured physical activity and metabolic risk fac-

tors in children (13,25,26). In these studies, an inverse association was observed between the total volume of physical activity and metabolic risk factors, independent of skinfold-assessed body fat. The results from the present study are novel, extending our previous observations. First, we examined the association between subcomponents of physical activity and insulin resistance, with the results suggesting that time spent sedentary and at moderate- and vigorous-intensity activity are associated with insulin resistance in a dose-response manner. Second, our results suggest that these associations are independent of precisely measured total or central fat mass and other confounding factors including birth weight.

Identifying the detailed associations between subcomponents of physical activity, insulin resistance, and other metabolic disease risk factors is important to inform primary prevention and future interventions aimed at increasing physical activity in children. Our observations are the first suggesting that objectively measured time spent sedentary is associated with insulin resistance in children and corroborate previous observations in overweight adults with a family history of type 2 diabetes (36). Similarly, Healy et al. (37) also suggested that objectively measured time spent sedentary was positively associated with glucose intolerance in adult Australian healthy men and women using the same assessment method. Taken together, reducing time devoted to sedentary behaviors and simultaneously increasing the amount of time spent at moderate- and vigorous-intensity activity is likely to have significant metabolic health benefits not only in adults but also in healthy prepubertal children, regardless of their levels of adiposity. Interestingly, our results suggest that sedentary time should be replaced with moderate- and vigorous-intensity physical activity but not with light-intensity activity, as light-intensity activity does not seem to confer any benefit in relation to insulin resistance. This may at least partly be explained by the large amount of time devoted to moderate- and vigorous-intensity activity in these children combined with a strong inverse correlation between moderate- and vigorous-intensity activity and time spent sedentary. From a public health perspective, this may mean that promoting activities such as active play, active commuting by walking or bicycling, sports, and other outdoor leisure activities usually per-

formed at a moderate intensity should be prioritized. This is in agreement with current recommendations for physical activity in children (32,33).

In conclusion, time spent sedentary and at MVPA is associated with insulin resistance independent of total or central fat mass in healthy Portuguese children. Reducing sedentary behavior and increasing the totality of activity may have beneficial effects on metabolic risk factors, even in prepubertal children. The development and implementation of multidimensional strategies focused on reducing sedentary behaviors and increasing overall involvement in different types of moderate-intensity activity are critically important in the primary prevention of metabolic disorders at young age.

Acknowledgments— This study was supported by grants from the Government of Madeira and FEDER.

L.B.S. and U.E. drafted the manuscript and did the data analysis. L.B.S., S.A.A., C.J.R., L.B.A., U.E., and K.F. contributed to the concept and design of the European Youth Heart Study (EYHS). U.E., C.J.R., and L.B.A. are members of the physical activity group within the EYHS. L.B.S., S.A.A., and K.F. obtained funding for the EYHS. U.E., R.O. and A.L.Q. were responsible for cleaning and analyzing physical activity data. R.O. and A.L.Q. collected all data, organized the data, and analyzed the dual-energy X-ray absorptiometry data. All authors contributed to the interpretation and discussion of the results and approved the final manuscript.

The authors thank the participants and their families who gave their time to the study and acknowledge all members of the EYHS in Madeira.

References

1. Lobstein TJ, James WP, Cole TJ: Increasing levels of excess weight among children in England. *Int J Obes* 27:1136–1138, 2003
2. Freedman DS, Srinivasan SR, Valdez RA, Williamson DF, Berenson GS: Secular increases in relative weight and adiposity among children over two decades: the Bogalusa Heart Study. *Pediatrics* 99:420–426, 1997
3. Moreno LA, Sarria A, Fleta J, Rodriguez G, Bueno M: Trends in body mass index and overweight prevalence among children and adolescents in the region of Aragon (Spain) from 1985 to 1995. *Int J Obes* 24: 925–931, 2000
4. Booth ML, Chey T, Wake M, Norton K, Hesketh K, Dollman J, Robertson I: Change in the prevalence of overweight and obesity among young Australians,

- 1969–1997. *Am J Clin Nutr* 77:29–36, 2003
5. Bacha F, Saad R, Gungor N, Janosky J, Arslanian SA: Obesity, regional fat distribution, and syndrome X in obese black versus white adolescents: race differential in diabetogenic and atherogenic risk factors. *J Clin Endocrinol Metab* 88:2534–2540, 2003
6. Weiss R, Dufour S, Taksali SE, Tamborlane WV, Petersen KF, Bonadonna RC, Boselli L, Barbetta G, Allen K, Rife F, Savoye M, Dziura J, Sherwin R, Shulman GI, Caprio S: Prediabetes in obese youth: a syndrome of impaired glucose tolerance, severe insulin resistance, and altered myocellular and abdominal fat partitioning. *Lancet* 362:951–957, 2003
7. Ferguson MA, Gutin B, Le NA, Karp W, Litaker M, Humphreis M, Okuyama T, Riggs S, Owens S: Effect of exercise training and its cessation on components of the insulin resistance syndrome in obese children. *Int J Obes* 23:889–895, 1999
8. Ball GDC, Shaibi GQ, Cruz ML, Watkins MP, Weigensberg MJ, Goran MI: Insulin sensitivity, cardiorespiratory fitness, and physical activity in overweight Hispanic youth. *Obes Res* 12:77–85, 2004
9. Imperatore G, Cheng YJ, Williams DE, Fulton J, Gregg EW: Physical activity, cardiovascular fitness, and insulin sensitivity among U.S. adolescents: the National Health and Nutrition Examination Survey, 1999–2002. *Diabetes Care* 29:1567–1572, 2006
10. Platat C, Wagner A, Klumpp T, Schweitzer B, Simon C: Relationships of physical activity with metabolic syndrome features and low-grade inflammation in adolescents. *Diabetologia* 49: 2078–2085, 2006
11. Schmitz KH, Jacobs Jr DR, Hong CP, Steinberger J, Moran A, Sinaiko AR: Association of physical activity with insulin sensitivity in children. *Int J Obes* 26: 1310–1316, 2002
12. Bunt JC, Salbe AD, Harper IT, Hanson RL, Tataranni PA: Weight, adiposity, and physical activity as determinants of an insulin sensitivity index in pima Indian children. *Diabetes Care* 26:2524–2530, 2003
13. Brage S, Wedderkopp N, Ekelund U, Franks PW, Wareham NJ, Andersen LB, Froberg K: Objectively measured physical activity correlates with indices of insulin resistance in Danish children: the European Youth Heart Study (EYHS). *Int J Obes* 28:1503–1508, 2004
14. Jebb SA: Measurement of soft tissue composition by dual energy X-ray absorptiometry. *Br J Nutr* 77:151–163, 1997
15. Treuth MS, Hunter GR, Kekes-Szabo T: Estimating intra-abdominal adipose tissue in women by dual-energy X-ray absorptiometry. *Am J Clin Nutr* 62:527–532, 1995
16. Kamel EG, McNeill G, Van Wijk MC: Use-

- fulness of anthropometry and DXA in predicting intra-abdominal fat in obese men and women. *Obes Res* 8:36–42, 2000
17. Riddoch C, Edwards D, Page A, Froberg K, Anderssen SA, Wedderkopp N, Brage S, Cooper AR, Sardinha LB, Harro M, Klasson Heggebö L, van Mechelen W, Boreham C, Ekelund U, Andersen LB, the European Youth Heart Study Team: The European Youth Heart Study: cardiovascular disease risk factors in children: rationale, aims, study design, and validation of methods. *J Phys Act Health* 2:115–129, 2005
 18. Cole TJ, Bellizzi MC, Flegal KM, Dietz WH: Establish a standard for child overweight and obesity worldwide: international survey. *BMJ* 320:1–6, 2000
 19. Tanner JM: *Growth at Adolescence*. 2nd ed. Oxford, U.K., Blackwell Scientific, 1962
 20. Quon MJ: Limitations to the fasting glucose to insulin ratio as an index of insulin sensitivity. *J Clin Endocrinol Metab* 86:4615–4617, 2001
 21. Gungor N, Saad R, Janosky J, Arslanian SA: Validation of surrogate estimates of insulin sensitivity and insulin secretion in children and adolescents. *J Pediatr* 144:47–55, 2004
 22. Keskin M, Kurtoglu S, Kendirci M, Atabek ME, Yazici C: Homeostasis model assessment is more reliable than the fasting glucose/insulin ratio and quantitative insulin sensitivity check index for assessing insulin resistance among obese children and adolescents. *Pediatrics* 115:e500–e503, 2005
 23. Ekelund U, Sardinha LB, Anderssen SA, Harro M, Franks PW, Brage S, Cooper AR, Andersen LB, Riddoch C, Froberg K: Associations between objectively assessed physical activity and indicators of body fatness in 9- to 10-y-old European children: a population-based study from 4 distinct regions in Europe (the European Youth Heart Study). *Am J Clin Nutr* 80:584–590, 2004
 24. Brage S, Wedderkopp N, Andersen LB, Froberg K: Influence of step frequency on movement intensity predictions with the CSA accelerometer: a field validation study in children. *Pediatr Exerc Sci* 15:277–287, 2003
 25. Ekelund U, Brage S, Froberg K, Harro M, Anderssen SA, Sardinha LB, Riddoch C, Andersen LB: TV viewing and physical activity are independently associated with metabolic risk in children: the European Youth Heart Study. *PLoS Med* 3:e488
 26. Andersen LB, Harro M, Sardinha LB, Froberg K, Ekelund U, Brage S, Anderssen SA: Physical activity and clustered cardiovascular risk in children: a cross-sectional study (the European Youth Heart Study). *Lancet* 368:299–304, 2006
 27. Ekelund U, Sjöström M, Yngve A, Poortvliet E, Nilsson A, Froberg K, Wedderkopp N, Westertorp K: Physical activity assessed by activity monitor and doubly labeled water in children. *Med Sci Sports Exerc* 33:275–281, 2001
 28. Freedson P, Pober D, Janz KF: Calibration of accelerometer output for children. *Med Sci Sports Exerc* 37 (Suppl. 11):S523–S530, 2005
 29. Treuth M, Schmitz K, Catellier D, McMurray R, Murray D, Almeida M, Going S, Normal J, Pate R: Defining thresholds for activity intensities in adolescent girls. *Med Sci Sport Exerc* 36:1259–1266, 2004
 30. Reilly J, Coyle J, Kelly L, Burke G, Grant S, Paton J: An objective method for measurement of sedentary behaviour in 3- to 4-year olds. *Obes Res* 11:1155–1158, 2003
 31. Nilsson A, Ekelund U, Yngve A, Sjöström M: Assessing physical activity among children with activity monitors using different time sampling intervals and placements. *Pediatr Exerc Sci* 14:75–84, 2002
 32. Biddle S, Sallis J, Cavill N, Eds.: *Young and active? Young People and Health-Enhancing Physical Activity: Evidence and Implications*. London, Health Education Authority, 1998
 33. Strong WB, Malina RM, Blimkie CJR, Daniels SR, Dishman RK, Gutin B, Hergenroeder AC, Must A, Nixon PA, Pivarnik JM, Rowland T: Evidence based physical activity for school-aged youths. *J Pediatr* 146:732–737, 2005
 34. Ku CY, Gower BA, Hunter GR, Goran MI: Racial differences in insulin secretion and sensitivity in prepubertal children: role of physical fitness and physical activity. *Obes Res* 8:506–515, 2000
 35. Kohl HW III, Fulton FE, Caspersen CJ: Assessment of physical activity among children and adolescents: a review and synthesis. *Prev Med* 31:S54–S76, 2000
 36. Ekelund U, Griffin SG, Wareham NJ: Physical activity and metabolic risk in individuals with a family history of type 2 diabetes. *Diabetes Care* 30:337–342, 2007
 37. Healy GN, Dunstan DW, Salmon J, Cerin E, Shaw JE, Zimmet PZ, Owen N: Objectively measured light intensity physical activity in independently associated with 2-h plasma glucose. *Diabetes Care* 30:1384–1389, 2007