

A Single Nucleotide Polymorphism in *KCNQ1* Is Associated With Susceptibility to Diabetic Nephropathy in Japanese Subjects With Type 2 Diabetes

TOSHIHIKO OHSHIGE, MD^{1,2}
 YASUSHI TANAKA, MD, PHD²
 SHIN-ICHI ARAKI, MD, PHD³
 TETSUYA BABAZONO, MD, PHD⁴
 MASAO TOYODA, MD, PHD⁵
 TOMOYA UMEZONO, MD, PHD⁵

HIROTAKA WATADA, MD, PHD^{6,7}
 DAISUKE SUZUKI, MD, PHD⁵
 YASUHIKO IWAMOTO, MD, PHD⁴
 RYUZO KAWAMORI, MD, PHD^{6,7}
 YUSUKE NAKAMURA, MD, PHD⁸
 SHIRO MAEDA, MD, PHD^{1,7}

OBJECTIVE — Genetic factors have been considered to contribute to the development and progression of diabetic nephropathy. The *KCNQ1* gene (potassium voltage-gated channel, KQT-like subfamily, member 1) was originally identified as a strong susceptibility gene for type 2 diabetes in two Japanese genome-wide association studies. In this study, we examined the association of single nucleotide polymorphisms (SNPs) within *KCNQ1* with diabetic nephropathy in Japanese subjects with type 2 diabetes.

RESEARCH DESIGN AND METHODS — We genotyped 33 SNPs in *KCNQ1* using 754 type 2 diabetic patients with overt nephropathy and 558 control subjects (an initial study), and we further examined the association of a candidate SNP using three other independent Japanese populations (replications 1–3).

RESULTS — We found that five SNPs were nominally associated with diabetic nephropathy, and the association of rs2237897 was the strongest. We also found that the T allele frequencies of rs2237897 were consistently higher in the nephropathy groups than in the control groups for all study populations (initial study: 0.33 vs. 0.27; replication 1: 0.32 vs. 0.30; replication 2: 0.33 vs. 0.28; and replication 3: 0.32 vs. 0.28), although the individual associations did not reach statistically significant levels. Combined analysis by a meta-analysis revealed that the T allele of rs2237897 was significantly associated with susceptibility to diabetic nephropathy in Japanese subjects with type 2 diabetes (odds ratio 1.22 [95% CI 1.10–1.34], $P = 3.1 \times 10^{-4}$, corrected $P = 0.01$).

CONCLUSIONS — These results suggest that *KCNQ1* is a new candidate gene for conferring susceptibility to diabetic nephropathy.

Diabetes Care 33:842–846, 2010

D iabetic nephropathy is a serious microvascular complication of diabetes, and it is a leading cause of end-stage renal disease in western countries (1) and in Japan (2). Several genetic and

environmental factors are likely to contribute to its development and progression (3,4), but the precise mechanism for this contribution is unknown.

The recent genome-wide association

studies using Japanese populations led to the identification of the *KCNQ1* (potassium voltage-gated channel, KQT-like subfamily, member 1) gene as a novel gene for susceptibility to type 2 diabetes (5,6). *KCNQ1* encodes the pore-forming α subunit of the voltage-gated potassium channel expressed mainly in the heart (7). The mutations of *KCNQ1* have been known to cause hereditary long QT syndromes (Romano-Ward syndrome [8] and Jervell and Lange-Nielsen syndrome [9]), which are characterized by the prolongation of QT intervals on the electrocardiogram; in some instances, these syndromes cause sudden cardiac death in the young (10) through the loss of function of the potassium channel in the heart. The expression of *KCNQ1* could also be observed in the human kidney. In the kidney, *KCNQ1* has been shown to assemble with *KCNE1*, the β subunit of the potassium channel, forming a potassium channel complex localized to the brush border of the mid to late proximal tubule (11,12); moreover, it has been shown to play a role in the Na^+ secretion at the proximal tubule by maintaining a driving force for Na^+ transport across the membrane (13). In previous studies, *kcnq1* knockout mice were reported to show lower blood pressure (14). These observations suggest the possibility that *KCNQ1* is a candidate for conferring susceptibility to diabetic nephropathy. To test this hypothesis, we focused on *KCNQ1* as a candidate gene for diabetic nephropathy and investigated the association between the single nucleotide polymorphisms (SNPs) within *KCNQ1* and diabetic nephropathy in Japanese subjects with type 2 diabetes.

RESEARCH DESIGN AND METHODS

DNA preparation and SNP genotyping

For the initial study, DNA samples were obtained from the peripheral blood of patients with type 2 diabetes who regularly

From the ¹Laboratory for Endocrinology and Metabolism, RIKEN Center for Genomic Medicine, Yokohama, Japan; the ²Department of Internal Medicine, Division of Metabolism and Endocrinology, St. Marianna University School of Medicine, Kawasaki, Japan; the ³Department of Medicine, Shiga University of Medical Science, Otsu, Japan; the ⁴Diabetes Center, Tokyo Women's Medical University, Tokyo, Japan; the ⁵Division of Nephrology and Metabolism, Department of Internal Medicine, Tokai University School of Medicine, Isehara, Japan; the ⁶Department of Medicine, Metabolism and Endocrinology, School of Medicine, Juntendo University, Tokyo, Japan; the ⁷Sportology Center, Graduate School of Medicine, Juntendo University, Tokyo, Japan; and the ⁸Laboratory of Molecular Medicine, Human Genome Center, Institute of Medical Science, University of Tokyo, Tokyo, Japan.

Corresponding author: Shiro Maeda, smaeda@src.riken.jp.

Received 17 October 2009 and accepted 21 December 2009. Published ahead of print at <http://care.diabetesjournals.org> on 7 January 2010. DOI: 10.2337/dc09-1933.

© 2010 by the American Diabetes Association. Readers may use this article as long as the work is properly cited, the use is educational and not for profit, and the work is not altered. See <http://creativecommons.org/licenses/by-nc-nd/3.0/> for details.

The costs of publication of this article were defrayed in part by the payment of page charges. This article must therefore be hereby marked "advertisement" in accordance with 18 U.S.C. Section 1734 solely to indicate this fact.

visited the outpatient clinic at Shiga University of Medical Science, Tokyo Women's Medical University, Juntendo University, Kawasaki Medical School, Iwate Medical University, Toride Kyodo Hospital, Kawai Clinic, Osaka City General Hospital, Chiba Tokushukai Hospital, or Osaka Rosai Hospital. All subjects provided informed consent before enrolling in this study. Diabetes was diagnosed according to the World Health Organization criteria. Type 2 diabetes was clinically defined as a disease with gradual adult onset. Subjects who tested positive for anti-GAD antibodies and those with mitochondrial disease (mitochondrial myopathy, encephalopathy, lactic acidosis, and stroke-like episodes) or maturity-onset diabetes of the young (MODY) were not included. DNA was extracted by a standard phenol-chloroform method. Diabetic patients were divided into two groups according to the following diagnostic criteria: 1) the nephropathy group ($n = 754$) comprised patients with diabetic retinopathy and overt nephropathy indicated by a urinary albumin excretion rate (AER) ≥ 200 $\mu\text{g}/\text{min}$ or a urinary albumin-to-creatinine ratio (ACR) ≥ 300 mg/g creatinine; and 2) the control group ($n = 558$) comprised patients with diabetic retinopathy but with no evidence of renal dysfunction (i.e., AER < 20 $\mu\text{g}/\text{min}$ or ACR < 30 mg/g creatinine). Measurements of AER or ACR were performed at least twice for each patient. The genotype of 33 SNPs within *KCNQ1* was analyzed with multiplex PCR-Invader assays as described previously (15–17). The statistical power of the initial study was estimated to be 0.35 for SNPs with minor allele frequency of 0.3, if we set a cutoff value at the $P = 0.0015$ level (significant level after Bonferroni correction) and a genotypic relative risk (γ) of 1.2 and the prevalence of diabetic nephropathy is assumed to be 10%. All patients participating in this study provided written informed consent, and the study protocol was approved by the ethics committees of RIKEN Yokohama Institute and each participating institution.

Subjects in replication studies

Replication 1, BioBank Japan case-control study. We selected diabetic nephropathy case and control samples from the subjects enrolled in BioBank Japan. Nephropathy was defined as patients with type 2 diabetes having both overt diabetic nephropathy and diabetic retinopathy ($n = 449$). The control subjects included

patients with type 2 diabetes having diabetic retinopathy and normoalbuminuria ($n = 965$). All patients participating in this study provided written informed consent, and the study protocol was approved by the ethics committees of RIKEN Yokohama Institute.

Replication 2, Tokai University case-control study. Patients with type 2 diabetes regularly visiting Tokai University Hospital or its affiliated hospitals were enrolled. All nephropathy patients were receiving chronic hemodialysis therapy, and control patients included those with normoalbuminuria determined by at least two measurements of the urinary ACR and with diabetes for > 10 years (case subjects, $n = 310$; control subjects, $n = 224$). All patients provided written informed consent, and the protocol was approved by the ethics committees of Tokai University School of Medicine and RIKEN Yokohama Institute.

Replication 3, Shiga prospective study. Patients with type 2 diabetes were recruited from among the participants of the Shiga Prospective Observational Follow-Up Study for Diabetic Complications (18). Patients classified as having microalbuminuria (200 $\mu\text{g}/\text{ml} > \text{AER} \geq 20$ $\mu\text{g}/\text{min}$) on the basis of at least two measurements of AER in 24-h urine collections were followed for up to 6 years. The progressors (case subjects, $n = 32$) were defined as those who had progressed to overt proteinuria (AER ≥ 200 $\mu\text{g}/\text{min}$), and the remaining patients were defined as nonprogressors (control subjects, $n = 168$). The study protocol and informed consent procedure were approved by the ethics committees of Shiga University of Medical Science and RIKEN Yokohama Institute.

The clinical characteristics of subjects are shown in supplementary Table A1 (available in an online appendix at <http://care.diabetesjournals.org/cgi/content/full/dc09-1933/DC1>).

Statistical analyses

We tested the genotype and allele frequencies for Hardy-Weinberg equilibrium proportions by the χ^2 test (19). We calculated the linkage-disequilibrium index, D' , and r^2 as described elsewhere (20). We analyzed the differences between the case and control groups in terms of the distribution of genotypes scored with an additive model by using a logistic regression analysis with or without adjustment for age, sex, BMI, and duration of type 2 diabetes. A haplotype

structure within the *KCNQ1* locus was analyzed by using Haploview software, version 4.1 (21). Combined meta-analysis was performed by using the Mantel-Haenszel procedure with a fixed-effects model after testing for heterogeneity.

RESULTS — We first examined the association of 33 SNPs within the *KCNQ1* susceptibility locus for type 2 diabetes with diabetic nephropathy in Japanese subjects with type 2 diabetes (initial study: case subjects, $n = 754$; control subjects, $n = 558$). The genotype distributions for all except two SNPs (rs234881 [$P = 0.046$] in case subjects and rs2283228 [$P = 0.029$] in control subjects) (supplementary Table A2, available in an online appendix) did not deviate from the Hardy-Weinberg equilibrium. We identified five SNPs that were significantly associated with diabetic nephropathy (nominal $P < 0.05$). Among them, the T allele of rs2237897 was the most strongly associated with susceptibility to the disease (unadjusted odds ratio [OR] 1.30 [95% CI 1.09–1.54], $P = 0.0027$; OR adjusted for age, sex, BMI, and duration of diabetes 1.33 [1.08–1.63], $P = 0.008$) (Table 1, Fig. 1, supplementary Table A3, available in an online appendix). We also found that age, sex (male), and duration of type 2 diabetes were independent risk factors for diabetic nephropathy in this analysis (data not shown). Subsequent analysis for the haplotype structure within this locus revealed that none of the haplotypes were more strongly associated with diabetic nephropathy than the single SNP alone (rs2237897) (supplementary Table A4, available in an online appendix).

We also examined the association of rs2237897 with hypertension. In this analysis, we divided subjects with type 2 diabetes into two groups: 1) hypertensive group, comprising subjects with systolic blood pressure ≥ 140 mmHg and/or diastolic blood pressure ≥ 90 mmHg or subjects taking antihypertensive agents and 2) the normotensive group, comprising subjects with systolic blood pressure < 140 mmHg and diastolic blood pressure < 90 mmHg without taking any antihypertensive agent. The result indicated that rs2237897 was not significantly associated with hypertension (OR 1.19 [95% CI 0.90–1.58], $P = 0.23$). rs2237897 was also not associated with plasma glucose or A1C in subjects with type 2 diabetes (data not shown).

The association of rs2237897 with di-

Table 1—SNPs nominally associated with diabetic nephropathy in the initial study

SNP	Risk allele	Unadjusted		Adjusted*	
		P	OR (95% CI)	P	OR (95% CI)
rs123381	G	0.036	1.24 (1.02–1.52)	0.012	1.39 (1.08–1.79)
rs163183	C	0.014	1.78 (1.13–2.81)	0.328	1.32 (0.76–2.11)
rs2299620	T	0.022	1.21 (1.03–1.42)	0.074	1.20 (0.98–1.46)
rs2237896	A	0.019	1.22 (1.03–1.44)	0.082	1.20 (0.98–1.47)
rs2237897	T	0.0027	1.30 (1.09–1.54)	0.008	1.33 (1.08–1.63)

*Adjusted for age, sex, BMI, and duration of type 2 diabetes.

abetic nephropathy did not achieve statistically significant levels after Bonferroni correction, probably due to insufficient study power to detect a true association in the initial study (see RESEARCH DESIGN AND METHODS). Therefore, to validate the association of the T allele of rs2237897, we further examined the association of rs2237897 with diabetic nephropathy in three other independent studies (BioBank

Japan case-control study, replication 1: case subjects, $n = 449$; control subjects, $n = 965$; Tokai University case-control study, replication 2: case subject, $n = 310$; control subjects, $n = 224$; Shiga prospective study, replication 3: progression case subjects, $n = 32$; control subjects, $n = 168$). The results revealed that the T allele frequencies of rs2237897 were consistently higher in the case groups than in

the control groups (replication 1: 0.32 vs. 0.30; replication 2: 0.33 vs. 0.28; and replication 3: 0.32 vs. 0.28), although the individual associations did not reach statistically significant levels (Table 2). Combined analysis by a meta-analysis with the Mantel-Haenszel test revealed that the T allele of rs2237897 was significantly associated with susceptibility to diabetic nephropathy (proteinuria: OR 1.21 [95% CI 1.08–1.36], $P = 1.4 \times 10^{-3}$, corrected $P = 0.046$; proteinuria plus end-stage renal disease: 1.22 [1.10–1.34], $P = 3.1 \times 10^{-4}$, corrected $P = 0.01$) (Table 2).

CONCLUSIONS— In the present study, we found that an SNP (rs2237897) within *KCNQ1* was associated with susceptibility to diabetic nephropathy in a Japanese population. The same trend of the association of rs2237897 was consistently observed in three additional replication studies, and the association was found to be statistically significant by a meta-analysis (corrected $P = 0.01$).

KCNQ1, located in 11p15.5, encodes the α subunit of the voltage-gated potassium channel that is mainly expressed in the heart, inner ear, and to a lesser extent in the stomach, intestine, liver, and kidney (7). In the kidney, *KCNQ1* assembles with *KCNE1* to form a potassium channel complex that is localized to the brush border of the mid to late proximal tubule (11,12). This potassium channel has been shown to be responsible for maintaining a driving force for Na^+ reabsorption by the repolarization of the membrane and to affect Na^+ secretion at the proximal tubule (13). Therefore, *KCNQ1* may be considered as a plausible candidate for conferring susceptibility to diabetic nephropathy.

Our present study revealed that the T allele of rs2237897 in *KCNQ1* was the most strongly associated with susceptibility to diabetic nephropathy, and no other SNP or haplotype was more strongly associated with the disease than rs2237897 alone in our Japanese populations. Furthermore, in our previous genome-wide association study for type 2 diabetes, we demonstrated that rs2237897 was also the most strongly associated with type 2 diabetes (5); therefore, it is likely that rs2237897 could directly contribute to the susceptibility to diabetic nephropathy, although the mechanism underlying the contribution of this variation is unknown.

From cumulative evidence, it is well known that poor glycemic control and/or

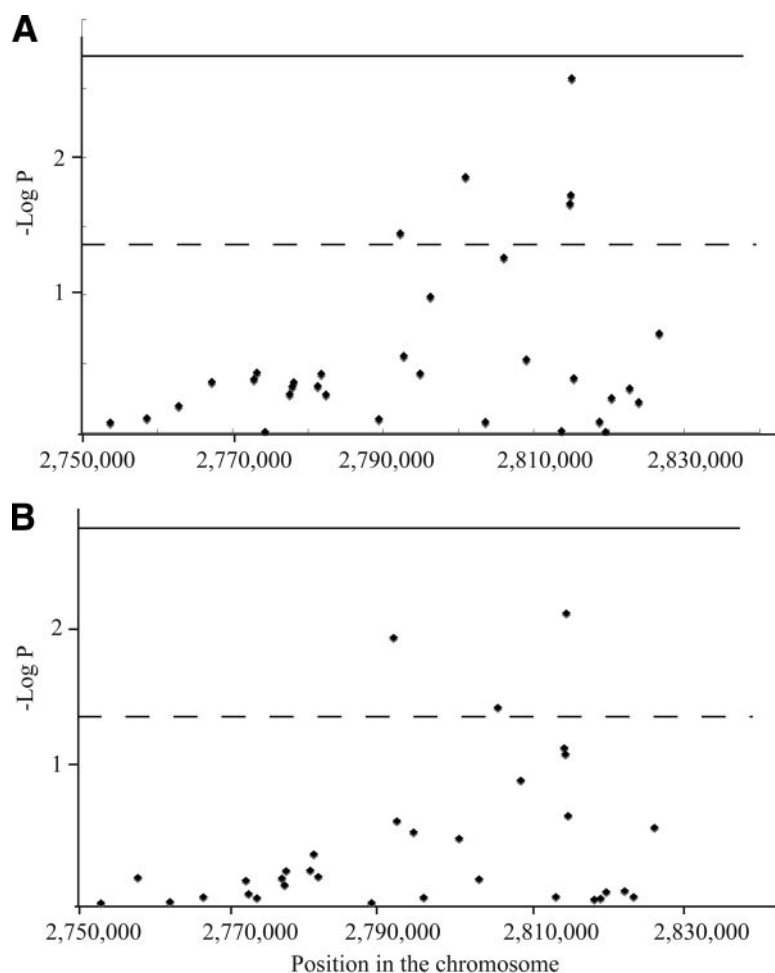


Figure 1—Association of the SNPs within *KCNQ1* in the initial study. P values for each SNP, calculated by a logistic regression analysis, are plotted. A: Unadjusted data. B: Data adjusted for age, sex, BMI, and duration of type 2 diabetes. ---, Nominally significant level ($P = 0.05$); —, statistically significant level after Bonferroni adjustment ($P = 0.0015$).

Table 2—Association of rs2237897 with diabetic nephropathy in four independent Japanese studies

Population	Phenotype	Case		Control		P*	OR (95% CI)*
		RAF	11/12/22	RAF	11/12/22		
Initial study	Overt proteinuria	0.33	331/336/81	0.27	294/210/48	0.0027	1.30 (1.09–1.54)
Replication 1	Overt proteinuria	0.32	209/188/50	0.30	473/404/82	0.156	1.13 (0.95–1.34)
Replication 3	Overt proteinuria	0.32	14/13/3	0.28	79/61/13	0.617	1.16 (0.64–2.11)
Meta-analysis†						1.4×10^{-3}	1.21 (1.08–1.36)
Replication 2	End-stage renal disease	0.33	133/132/33	0.28	111/98/14	0.080	1.28 (0.97–1.68)
Meta-analysis (all studies)‡						3.08×10^{-4}	1.22 (1.10–1.34)
Meta-analysis (replication 1–3)§						0.03	1.16 (1.01–1.34)

*Unadjusted data. †Meta-analysis was performed by Mantel-Haenszel test (heterogeneity $P = 0.51$). ‡Meta-analysis was performed by Mantel-Haenszel test (heterogeneity $P = 0.70$). §Meta-analysis was performed by Mantel-Haenszel test (heterogeneity $P = 0.79$). RAF, risk allele frequency; 11, homozygous of major allele; 12, heterozygous; 22, homozygous of minor allele.

high blood pressure contribute to the progression of nephropathy in patients with diabetes. Because rs2237897 was originally shown to be associated with type 2 diabetes as well as with insulin secretion or fasting plasma glucose in subjects with normal glucose tolerance (22,23), the effects of rs2237897 on conferring susceptibility to diabetic nephropathy might be mediated by a difference in glycemic control according to the genotype. In our present study, however, rs2237897 was not associated with plasma glucose or A1C in subjects with type 2 diabetes, and the association between rs2237897 and diabetic nephropathy was not affected by adjusting A1C in the logistic regression analysis. Moreover, the T allele of rs2237897, a risk allele for diabetic nephropathy in the present study, was shown to be a nonrisk allele for type 2 diabetes, reduction of insulin secretion, or elevation of blood glucose level. Therefore, it is suggested that rs2237897 contributes to conferring susceptibility to diabetic nephropathy through a mechanism independent of glycemic control.

There may be a possibility that rs2237897 affects systemic blood pressure because *KCNQ1* has been shown to play some roles in the regulation of renal Na^+ reabsorption as described above. To evaluate this possibility, we also examined the association of rs2237897 with hypertension using 1,312 subjects with type 2 diabetes (initial study). The result indicated that rs2237897 was not significantly associated with hypertension (OR 1.19 [95% CI 0.90–1.58], $P = 0.23$). In addition, a nominal association of rs2237897 with diabetic nephropathy could also be observed by a logistic regression analysis using the presence of hypertension or systolic and/or diastolic

blood pressures as covariables (data not shown). Therefore, it is likely that the effect of rs2237897 is also independent of systemic blood pressure.

In previous studies, subjects with a loss-of-function mutation of *KCNQ1* and *kcnq1* knockout mice did not exhibit glucose intolerance (14). In contrast, it was reported that an inhibitor of *KCNQ1* (chromanol 293B) significantly increased insulin secretion in the presence of sulfonylurea (24); this finding suggested that the activity of *KCNQ1* in subjects with the C allele of rs2237897, a risk allele for type 2 diabetes, might be higher than that in subjects with the T allele, a risk allele for diabetic nephropathy in the present study. However, further studies will be required to elucidate the precise molecular mechanism by which *KCNQ1* and its polymorphism contribute to susceptibility to diabetic nephropathy.

In summary, we found that the T allele of rs2237897 within *KCNQ1* was significantly associated with susceptibility to diabetic nephropathy in Japanese populations. The present data suggest that *KCNQ1* may be a good candidate for diabetic nephropathy and a target to develop new drugs for treatment of the disease.

Acknowledgments— This work was supported in part by a grant from the Ministry of Education, Culture, Sports, Science, and Technology, Japan.

No potential conflicts of interest relevant to this article were reported.

We thank the technical staff of the Laboratory for Endocrinology and Metabolism at the Center for Genomic Medicine for providing technical assistance.

APPENDIX— Participating investigators were as follows: Dr. Koichi Kawai,

MD, PhD, Kawai Clinic, Tsukuba, Japan; Dr. Masahito Imanishi, MD, PhD, Osaka City General Hospital, Osaka, Japan; Dr. Takashi Uzu, MD, PhD, and Dr. Atsunori Kashiwagi, MD, PhD, Shiga University of Medical Science, Otsu, Japan; and Dr. Kohei Kaku, MD, PhD, Kawasaki Medical School, Kurashiki, Japan.

References

1. U.S. Renal Data System. *USRDS 2008 Annual Data Report. Atlas of Chronic Kidney Disease and End-Stage Renal Disease in the United States*. Bethesda, MD, National Institute of Diabetes and Digestive and Kidney Diseases, National Institutes of Health, 2008
2. Nakai S, Masakane I, Akiba T, Shigematsu T, Yamagata K, Watanabe Y, Iseki K, Itami N, Shinoda T, Morozumi K, Shoji T, Marubayashi S, Morita O, Kimata N, Shoji T, Suzuki K, Tsuchida K, Nakamoto H, Hamano T, Yamashita A, Wakai K, Wada A, Tsubakihara Y. Overview of regular dialysis treatment in Japan as of 31 December 2006. *Ther Apher Dial* 2008;12:428–456
3. Seaquist ER, Goetz FC, Rich S, Barbosa J. Familial clustering of diabetic kidney disease. Evidence for genetic susceptibility to diabetic nephropathy. *N Engl J Med* 1989;320:1161–1165
4. Quinn M, Angelico MC, Warram JH, Krolewski AS. Familial factors determine the development of diabetic nephropathy in patients with IDDM. *Diabetologia* 1996;39:940–945
5. Unoki H, Takahashi A, Kawaguchi T, Hara K, Horikoshi M, Andersen G, Ng DP, Holmkvist J, Borch-Johnsen K, Jørgensen T, Sandbaek A, Lauritzen T, Hansen T, Nurbaya S, Tsunoda T, Kubo M, Babazono T, Hirose H, Hayashi M, Iwamoto Y, Kashiwagi A, Kaku K, Kawamori R, Tai ES, Pedersen O, Kamatani N, Kadowaki T, Kikkawa R, Nakamura Y, Maeda S. SNPs in *KCNQ1* are associated with sus-

- ceptibility to type 2 diabetes in East Asian and European populations. *Nat Genet* 2008;40:1098–1102
6. Yasuda K, Miyake K, Horikawa Y, Hara K, Osawa H, Furuta H, Hirota Y, Mori H, Jonsson A, Sato Y, Yamagata K, Hinokio Y, Wang HY, Tanahashi T, Nakamura N, Oka Y, Iwasaki N, Iwamoto Y, Yamada Y, Seino Y, Maegawa H, Kashiwagi A, Takeda J, Maeda E, Shin HD, Cho YM, Park KS, Lee HK, Ng MC, Ma RC, So WY, Chan JC, Lyssenko V, Tuomi T, Nilsson P, Groop L, Kamatani N, Sekine A, Nakamura Y, Yamamoto K, Yoshida T, Tokunaga K, Itakura N, Makino H, Nanjo K, Kadowaki T, Kasuga M. Variants in *KCNQ1* are associated with susceptibility to type 2 diabetes mellitus. *Nat Genet* 2008;40:1092–1097
 7. Lee MP, Ravenel JD, Hu RJ, Lustig LR, Tomaselli G, Berger RD, Brandenburg SA, Litzl TJ, Bunton TE, Limb C, Francis H, Gorelikow M, Gu H, Washington K, Argani P, Goldenring JR, Coffey RJ, Feinberg AP. Targeted disruption of the *Kvlqt1* gene causes deafness and gastric hyperplasia in mice. *J Clin Invest* 2000;106:1447–1455
 8. Wang Q, Curran ME, Splawski I, Burn TC, Millholland JM, VanRaay TJ, Shen J, Timothy KW, Vincent GM, de Jager T, Schwartz PJ, Toubin JA, Moss AJ, Atkinson DL, Landes GM, Connors TD, Keating MT. Positional cloning of a novel potassium channel gene: *KVLQT1* mutations cause cardiac arrhythmias. *Nat Genet* 1996;12:17–23
 9. Neyroud N, Tesson F, Denjoy I, Leibovici M, Donger C, Barhanin J, Fauré S, Gary F, Coumel P, Petit C, Schwartz K, Guicheney P. A novel mutation in the potassium channel gene *KVLQT1* causes the Jervell and Lange-Nielsen cardioauditory syndrome. *Nat Genet* 1997;15:186–189
 10. Schwartz PJ, Moss AJ, Vincent GM, Crampton RS. Diagnostic criteria for the long QT syndrome. An update. *Circulation* 1993;88:782–784
 11. Sugimoto T, Tanabe Y, Shigemoto R, Iwai M, Takumi T, Ohkubo H, Nakanishi S. Immunohistochemical study of a rat membrane protein which induces a selective potassium permeation: its localization in the apical membrane portion of epithelial cells. *J Membr Biol* 1990;113:39–47
 12. Vallon V, Grahmmer F, Richter K, Bleich M, Lang F, Barhanin J, Völkl H, Warth R. Role of KCNE1-dependent K^+ fluxes in mouse proximal tubule. *J Am Soc Nephrol* 2001;12:2003–2011
 13. Lang F, Rehwald W. Potassium channels in renal epithelial transport regulation. *Physiol Rev* 1992;72:1–32
 14. Vallon V, Grahmmer F, Volkl H, Sandu CD, Richter K, Rexhepaj R, Gerlach U, Rong Q, Pfeifer K, Lang F. KCNQ1-dependent transport in renal and gastrointestinal epithelia. *Proc Natl Acad Sci U S A* 2005;102:17864–17869
 15. Tanaka N, Babazono T, Saito S, Sekine A, Tsunoda T, Haneda M, Tanaka Y, Fujioka T, Kaku K, Kawamori R, Kikkawa R, Iwamoto Y, Nakamura Y, Maeda S. Association of solute carrier family 12 (sodium/chloride) member 3 with diabetic nephropathy, identified by genome-wide analyses of single nucleotide polymorphisms. *Diabetes* 2003;52:2848–2853
 16. Shimazaki A, Kawamura Y, Kanazawa A, Sekine A, Saito S, Tsunoda T, Koya D, Babazono T, Tanaka Y, Matsuda M, Kawai K, Iizumi T, Imanishi M, Shinosaki T, Yanagimoto T, Ikeda M, Omachi S, Kashiwagi A, Kaku K, Iwamoto Y, Kawamori R, Kikkawa R, Nakajima M, Nakamura Y, Maeda S. Genetic variations in the gene encoding *ELMO1* are associated with susceptibility to diabetic nephropathy. *Diabetes* 2005;54:1171–1178
 17. Kamiyama M, Kobayashi M, Araki S, Iida A, Tsunoda T, Kawai K, Imanishi M, Nomura M, Babazono T, Iwamoto Y, Kashiwagi A, Kaku K, Kawamori R, Ng DP, Hansen T, Gaede P, Pedersen O, Nakamura Y, Maeda S. Polymorphisms in the 3' UTR in the neurocalcin δ gene affect mRNA stability, and confer susceptibility to diabetic nephropathy. *Hum Genet* 2007;122:397–407
 18. Araki S, Haneda M, Sugimoto T, Isono M, Isshiki K, Kashiwagi A, Koya D. Factors associated with frequent remission of microalbuminuria in patients with type 2 diabetes. *Diabetes* 2005;54:2983–2987
 19. Nielsen DM, Ehm MG, Weir BS. Detecting marker-disease association by testing for Hardy-Weinberg disequilibrium at a marker locus. *Am J Hum Genet* 1998;63:1531–1540
 20. Devlin B, Risch N. A comparison of linkage disequilibrium measures for fine-scale mapping. *Genomics* 1995;29:311–322
 21. Barrett JC, Fry B, Maller J, Daly MJ. Haploview: analysis and visualization of LD and haplotype maps. *Bioinformatics* 2005;21:263–265
 22. Tan JT, Nurbaya S, Gardner D, Ye S, Tai ES, Ng DP. Genetic variation in *KCNQ1* associates with fasting glucose and β -cell function: a study of 3,734 subjects comprising three ethnicities living in Singapore. *Diabetes* 2009;58:1445–1449
 23. Müssig K, Staiger H, Machicao F, Kirchoff K, Guthoff M, Schäfer SA, Kantartzis K, Silbernagel G, Stefan N, Holst JJ, Gallwitz B, Häring HU, Fritsche A. Association of type 2 diabetes candidate polymorphisms in *KCNQ1* with incretin and insulin secretion. *Diabetes* 2009;58:1715–1720
 24. Ullrich S, Su J, Ranta F, Wittekindt OH, Ris F, Rösler M, Gerlach U, Heitzmann D, Warth R, Lang F. Effects of I_{Ks} channel inhibitors in insulin-secreting INS-1 cells. *Pflugers Arch* 2005;451:428–436