

Prediction of Mortality in Type 2 Diabetes From Health-Related Quality of Life (ZODIAC-4)

NANNE KLEEFSTRA MD^{1,2}
GIJS W.D. LANDMAN, MD³
SEBASTIAAN T. HOUWELING, MD, PHD^{2,4}
LIELITH J. UBINK-VELTMAAT, MD, PHD⁵
SUSAN J.J. LOGTENBERG, MD¹

BETTY MEYBOOM-DE JONG, MD, PHD⁶
JAMES C. COYNE, PHD⁷
KLAAS H. GROENIER, PHD⁶
HENK J.G. BILO, MD, PHD^{1,8}

OBJECTIVE — To investigate the relationship between health-related quality of life (HRQOL) and mortality in type 2 diabetes.

RESEARCH DESIGN AND METHODS — In 1998, 1,143 primary care patients with type 2 diabetes participated in the Zwolle Outpatient Diabetes project Integrating Available Care (ZODIAC) study. At baseline, HRQOL was assessed with the RAND-36 and, after almost 6 years, life status was retrieved. Cox proportional hazards modeling was used to investigate the association between HRQOL (continuous data) and mortality with adjustment for selected confounders (smoking, age, sex, diabetes duration, A1C, renal function, BMI, blood pressure, HDL cholesterol, and macrovascular complications).

RESULTS — The Physical Component Summary of the RAND-36 was inversely associated with mortality (hazard ratio [HR] 0.979 [95% CI 0.966–0.992]), as were two separate RAND-36 dimensions.

CONCLUSIONS — This study found that HRQOL is an independent marker of mortality and emphasizes the importance of looking beyond clinical parameters in patients with type 2 diabetes.

Diabetes Care 31:932–933, 2008

Among others, hypertension and dyslipidemia are well-known clinical risk factors in type 2 diabetes and should be treated accordingly (1). However, studies in nondiabetic populations have also found that factors like worse health-related quality of life (HRQOL) are associated with higher mortality (2–4). If this holds true for patients with type 2 diabetes, clinicians might have to give more attention to HRQOL and perhaps assess HRQOL routinely in these patients. This study is, to our knowledge, the first one investigating the

relationship between HRQOL and mortality in type 2 diabetes.

RESEARCH DESIGN AND METHODS — In 1998, 1,143 primary care patients with type 2 diabetes participated in the Zwolle Outpatient Diabetes project Integrating Available Care (ZODIAC) study (5). Patients with serious comorbidity or impaired cognitive abilities were excluded ($n = 57$). Baseline data involved a full medical history including macrovascular complications, diabetes duration, BMI, and tobacco

consumption. Laboratory and physical assessment data were collected and included A1C, nonfasting lipid profile, serum creatinine, albuminuria, blood pressure, weight, and height. This study was approved by the local medical ethics committee.

HRQOL was measured with the RAND-36 (6). The RAND-36 contains nine health dimensions. To interpret the overall direction of the HRQOL effects, two summary measures can be calculated: the physical (PCS) and mental (MCS) component summary. Scores range from 0–100; higher scores indicate better HRQOL.

Life status in 2004 and cause of death were retrieved from records maintained by the hospital and general practitioners. Ten baseline variables were selected for their possible confounding effects in the relationship between HRQOL and mortality, i.e., smoking (yes or no), age, sex, diabetes duration, A1C, renal function (estimated with Cockcroft-Gault), BMI, blood pressure, HDL cholesterol, and macrovascular complications (yes or no).

Cox proportional hazard modeling was used to investigate the association between HRQOL (continuous data) and mortality with adjustment of selected confounders. For Kaplan Meier curves, HRQOL scores were dichotomized.

RESULTS — The study population included 653 women (57%). Mean \pm SD age at baseline was 68.2 ± 11.5 years with median diabetes duration 6 years (interquartile range 3–11). Median follow-up time was 5.8 years. At follow-up, 335 patients had died, 101 from cardiovascular causes. Date of death was known in 329 (98%) patients.

Data on HRQOL were available from 1,000 (87%) patients and complete for 857 (75%) patients. Completeness of data was inversely associated with mortality (HR 0.355 [95% CI 0.272–0.462] for one to eight missing scales; 0.549 [0.382–0.788] for all nine missing scales compared with complete data).

The PCS score was inversely associated with mortality (HR 0.979 [95% CI 0.966–0.992]). A decrease of 1 point on

From the ¹Diabetes Centre, Isala Clinics, Zwolle, the Netherlands; the ²Langerhans Medical Research Group, Zwolle, the Netherlands; the ³Department of Internal Medicine, Isala Clinics, Zwolle, the Netherlands; ⁴General Practice Sleeuwijk, Sleeuwijk, the Netherlands; ⁵General Practice 't Veen, Hattum, the Netherlands; the ⁶Department of General Practice, University of Groningen, Groningen, the Netherlands; the ⁷Department of Psychiatry, University of Pennsylvania School of Medicine, Philadelphia, Pennsylvania; and the ⁸Department of Internal Medicine, University Medical Center Groningen, Groningen, the Netherlands.

Corresponding author: Nanne Kleefstra, Diabetes Centre, Isala Clinics, Zwolle, Netherlands. E-mail: kleefstra@langerhans.com.

Received for publication 29 October 2007 and accepted in revised form 29 January 2008.

Published ahead of print at <http://care.diabetesjournals.org> on 4 March 2008. DOI: 10.2337/dc07-2072.

Abbreviations: HRQOL, health-related quality of life; MCS, mental component summary; PCS, physical component summary, ZODIAC, Zwolle Outpatient Diabetes project Integrating Available Care.

© 2008 by the American Diabetes Association.

The costs of publication of this article were defrayed in part by the payment of page charges. This article must therefore be hereby marked "advertisement" in accordance with 18 U.S.C. Section 1734 solely to indicate this fact.

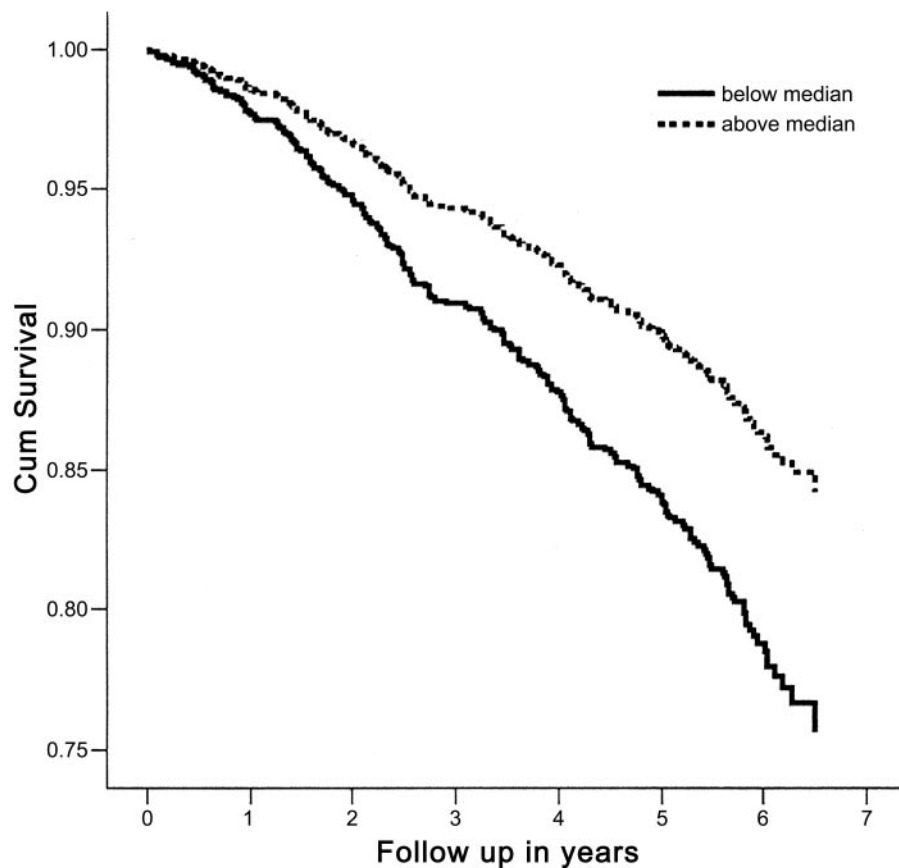


Figure 1—Kaplan-Meier curve PCS.

the PCS score led to an increase of the hazard of mortality of 2.1%. A total of 145 (32.4%) of 448 patients with PCS scores below the median died vs. 69 of 449 (15.4%) with PCS scores above the median (a 2.1 ratio) (Fig. 1). The MCS score was not associated with mortality (1.008 [0.994–1.022]).

For separate RAND-36 dimensions, significant relationships were found for “physical functioning” (HR 0.989 [95% CI 0.982–0.996]) and “general health perception” (0.982 [0.971–0.994]).

For cardiovascular mortality, results remained significant for physical functioning (HR 0.987 [95% CI 0.977–0.996]). HRs for general health perception and PCS were 0.967 [95% CI 0.967–1.000] and 0.982 (0.964–1.001), respectively.

CONCLUSIONS—Worse HRQOL is associated with higher overall mortality in patients with type 2 diabetes in 6 year follow-up after taking potential confounders into account. Patients with low versus high HRQOL (PCS score) have a 2.1-fold increased mortality risk. Two separate RAND-36 dimensions, physical

functioning and general health perception, were related to mortality. The former has questions about ability to perform physical activities, the latter questions about patients’ opinion about their health in general. Physical functioning was also associated with cardiovascular mortality.

Limitations of this study were that 25% of patients did not fill in or complete the questionnaire. However, this was strongly related to mortality and has therefore probably led to an underestimation of the effects of HRQOL on mortality (7). Of course, confounders other than the 10 selected in this study could influence the prediction of mortality from HRQOL, e.g., depression, which is more prevalent in type 2 diabetes, is related to worse HRQOL and higher mortality (8). Furthermore, it is important to emphasize that an association between HRQOL and mortality does not establish causality.

Nevertheless, this study emphasizes that in patients with type 2 diabetes it is important to look beyond clinical parameters. Good HRQOL is an important goal of health care in itself, yet demonstrating that HRQOL is an independent marker of mortality in type 2 diabetes provides an

added incentive for health care providers to assess HRQOL routinely in diabetes care, allowing any underlying unmet needs to be identified and addressed when possible. Further research is needed to examine if the association reflects specific modifiable risks rather than overall disease burden.

Acknowledgments—This study was presented in abstract form at the 43rd Annual Meeting of the European Association for the Study of Diabetes, Amsterdam, the Netherlands, 17–21 September 2007 and published as an abstract in *Diabetologia* 50 (Suppl.1):S71, 2007.

References

1. Turner RC, Millns H, Neil HA, Stratton IM, Manley SE, Matthews DR, Holman RR: Risk factors for coronary artery disease in non-insulin dependent diabetes mellitus: United Kingdom Prospective Diabetes Study (UKPDS: 23). *BMJ* 316:823–828, 1998
2. Fan VS, Au DH, McDonnell MB, Fihn SD: Intraindividual change in SF-36 in ambulatory clinic primary care patients predicted mortality and hospitalizations. *J Clin Epidemiol* 57:277–283, 2004
3. Tsai SY, Chi LY, Lee CH, Chou P: Health-related quality of life as a predictor of mortality among community-dwelling older persons. *Eur J Epidemiol* 22:19–26, 2007
4. Rumsfeld JS, MaWhinney S, McCarthy M Jr, Shroyer AL, VillaNueva CB, O’Brien M, Moritz TE, Henderson WG, Grover FL, Sethi GK, Hammermeister KE, the Veterans Affairs Cooperative Study Group on Processes, Structures, and Outcomes of Care in Cardiac Surgery: Health-related quality of life as a predictor of mortality following coronary artery bypass graft surgery. *JAMA* 281:1298–1303, 1999
5. Ubink-Veltmaat LJ, Bilo HJ, Groenier KH, Houweling ST, Rischen RO, Meyboom-de Jong B: Prevalence, incidence and mortality of type 2 revisited: (ZODIAC-1). *Eur J Epidemiol* 18:793–800, 2003
6. van der Zee KI, Sanderma R, Heyink JW, de Haes H: Psychometric qualities of the RAND 36-item health survey 1.0: a multidimensional measure of general health status. *Int J Behav Med* 3:104–122, 1996
7. Coyne JC, Pajak TF, Harris J, Konski A, Movsas B, Watkins-Bruner D: Emotional well-being does not predict survival in head and neck cancer patients: a Radiation Therapy Oncology Group study. *Cancer* 110:2568–2575, 2007
8. Goldney RD, Phillips PJ, Fisher LJ, Wilson DH: Diabetes, depression, and quality of life: a population study. *Diabetes Care* 27: 1066–1070, 2004