

Depression and All-Cause and Coronary Heart Disease Mortality Among Adults With and Without Diabetes

LEONARD E. EGEDE, MD, MS^{1,2,3}PAUL J. NIETERT, PHD^{1,2,4}DEYI ZHENG, MD, PHD⁵

OBJECTIVE — The aim of this study was to evaluate the effect of depression on all-cause and coronary heart disease (CHD) mortality among adults with and without diabetes.

RESEARCH DESIGN AND METHODS — We studied 10,025 participants in the population-based National Health and Nutrition Examination Survey I Epidemiologic Follow-up Study who were alive and interviewed in 1982 and had complete data for the Center for Epidemiologic Studies Depression Scale. Four groups were created based on diabetes and depression status in 1982: 1) no diabetes, no depression (reference group); 2) no diabetes, depression present; 3) diabetes present, no depression; and 4) diabetes present, depression present. Cox proportional hazards regression models were used to calculate multivariate-adjusted hazard ratios (HRs) of death for each group compared with the reference group.

RESULTS — Over 8 years (83,624 person-years of follow-up), 1,925 deaths were documented, including 522 deaths from CHD. Mortality rate per 1,000 person-years of follow-up was highest in the group with both diabetes and depression. Compared with the reference group, HRs for all-cause mortality were no diabetes, depression present, 1.20 (95% CI 1.03–1.40); diabetes present, no depression 1.88 (1.55–2.27); and diabetes present, depression present, 2.50 (2.04–3.08). HRs for CHD mortality were no diabetes, depression present, 1.29 (0.96–1.74); diabetes present, no depression 2.26 (1.60–3.21); and diabetes present, depression present, 2.43 (1.66–3.56).

CONCLUSIONS — The coexistence of diabetes and depression is associated with a significantly increased risk of death from all causes, beyond that due to having either diabetes or depression alone.

Diabetes Care 28:1339–1345, 2005

Depression is highly prevalent in the U.S., affecting ~18.8 million adults or about 9.5% of the U.S. population aged ≥ 18 in a given year (1). Depression is a leading cause of disability, workplace absenteeism, diminished or lost productivity, and increased use of health care resources (2,3). There is fairly

consistent evidence that depression is associated with increased mortality (4–9). A recent meta-analysis, which included 25 studies and 106,628 subjects, found that the hazard ratio (HR) for all-cause mortality in depressed subjects was 1.81 (95% CI 1.58–2.07) compared with that for nondepressed subjects (10).

Diabetes is also highly prevalent in the U.S. (11), and multiple studies have documented an increased prevalence of depression in individuals with diabetes (12). It is estimated that 10–30% of people with diabetes have coexisting depression and that people with diabetes have twofold increased odds of having depression compared with individuals without diabetes (12,13). The coexistence of depression and diabetes is known to be associated with poor glycemic control (14,15), an increased risk of complications (16–18), a decreased quality of life (19), an increased disability burden (20,21), and increased health care use and costs (19,22,23). However, no study has examined whether the coexistence of depression and diabetes is associated with increased risk of mortality. In particular, there are no data that compares the effect of depression on the risk of death in people with and without diabetes.

To address these issues, we examined mortality in a large nationally representative cohort of adults aged 25–75 years in 1971–1975 (24), who were reinterviewed in 1982 and followed until 1992 (25,26). We compared all-cause and coronary heart disease (CHD) mortality among four subsets of participants based on their disease status at the 1982 interview.

RESEARCH DESIGN AND METHODS

The National Health and Nutrition Examination Survey (NHANES) I was a multistage, stratified, national probability sample of the civilian noninstitutionalized population of the U.S. aged 1–74 years (24). The survey was conducted between 1971 and 1975 and included a standardized examination and questionnaires that addressed various health topics. Persons living in poverty

From the ¹Department of Medicine, Medical University of South Carolina, Charleston, South Carolina; the ²Center for Health Care Research, Medical University of South Carolina, Charleston, South Carolina; the ³Ralph H. Johnson VA Medical Center, Medical University of South Carolina, Charleston, South Carolina; the ⁴Department of Biostatistics, Bioinformatics, and Epidemiology, Medical University of South Carolina, Charleston, South Carolina; and the ⁵Department of Family and Preventive Medicine, Palmetto Health Richland, University of South Carolina School of Medicine, Columbia, South Carolina.

Address correspondence and reprint requests to Leonard E. Egede, MD, Medical University of South Carolina, Center for Health Care Research, 135 Cannon St., Suite 403, PO Box 250837, Charleston, SC 29425. E-mail: egedel@muscc.edu.

Received for publication 29 October 2004 and accepted in revised form 9 February 2005.

Abbreviations: CES-D, Center for Epidemiologic Studies Depression Scale; CHD, coronary heart disease; NHANES, National Health and Nutrition Examination Survey; NHEFS, National Health and Nutrition Examination Epidemiologic Follow-up Study.

A table elsewhere in this issue shows conventional and Système International (SI) units and conversion factors for many substances.

© 2005 by the American Diabetes Association.

The costs of publication of this article were defrayed in part by the payment of page charges. This article must therefore be hereby marked "advertisement" in accordance with 18 U.S.C. Section 1734 solely to indicate this fact.

areas, women of childbearing age (25–44 years), and elderly persons (≥ 65 years) were oversampled. The NHANES I sample included 20,729 persons 25–74 years of age, of whom 14,407 (70%) were medically examined.

The NHANES I Epidemiologic Follow-up Study (NHEFS) is a longitudinal study of participants who were between 25 and 74 years old during the 1971–1975 interviews (25,26). The first follow-up study was conducted in 1982 and included all persons aged 25–74 years at the NHANES I assessment ($n = 14,407$). Participants were subsequently interviewed in 1986, 1987, and 1992. The 1982 follow-up interview included data on self-reported medical conditions and an assessment of depression based on the Center for Epidemiologic Studies Depression Scale (CES-D). For this investigation, we analyzed data on participants in the NHEFS cohort who completed the CES-D in 1982 and were followed until the 1992 interview date.

Definition of depression

The CES-D is a self-report scale designed to measure depression in the general population (27). The scale consists of 20 items rated on a four-point scale with response categories indicating the frequency of occurrence of each item in the previous week. The four-point scale ranges from 0 (rarely or none of the time) to 3 (most or all of the time). Scores for items 4, 8, 12, and 16 are reversed before scores for the 20 items are summed. Total scores range from 0 to 60 with higher scores indicating more depressive symptoms. A cutoff of ≥ 16 has been used extensively for distinguishing depressed from nondepressed patients. The CES-D is a valid and reliable instrument for assessing depression in community samples with high internal consistency, good construct and concurrent validity, and modest test-retest reliability (27–30).

Defining the study cohort

Of the 14,407 respondents eligible for inclusion in the 1982 follow-up study, 13,383 were traced, 11,361 were living, and 10,523 were interviewed (25). We defined our cohort as the 10,025 individuals who were alive and interviewed in 1982 and who had complete data for the CES-D. We excluded 498 individuals who either did not have complete data for the CES-D or were missing data for co-

variates. We divided the cohort into four groups based on the presence or absence of self-reported diabetes and depression (defined as CES-D ≥ 16) in 1982 as follows: 1) individuals without diabetes and without depression, 2) individuals without diabetes but with depression, 3) individuals with diabetes but without depression, and 4) individuals with both diabetes and depression.

Baseline data collection

Demographic, lifestyle behavior, and comorbidity information were collected as part of the 1982 interview. We included age (in years) as a continuous variable. Race/ethnicity was categorized as white versus black/other. Poverty:income ratio was defined as percentage of the U.S. federal poverty level and classified as $<125\%$, 125–399%, and $\geq 400\%$. Education was categorized as $<$ high school graduate, high school graduate, or $>$ high school graduate, and marital status was classified as not married or married. BMI was calculated from self-reported weight and height and categorized as normal weight (18.5–24.9), overweight (25.0–29.9), and obese ($\geq 30.0+$). Smoking was grouped as never, former, or current smoker, and physical activity based on the individual's engagement in usual recreational activity was categorized as regular, light, or sedentary. Self-reported aspirin use was dichotomized as yes versus no.

In addition, respondents were asked to report previously diagnosed medical conditions, including diabetes, hypertension, heart disease, stroke, and cancer. The diagnosis of diabetes was based on a "yes" response to the question, "Have you ever been told by a doctor that you have diabetes?" A similar approach was used to establish prior diagnosis of the other self-reported medical conditions.

Outcome measures

Main outcome measures were all-cause mortality and CHD mortality across the four groups in the cohort. Follow-up data were collected in four waves: 1982–1984, 1986, 1987, and 1992. For each wave, patient or proxy interviews were conducted and health care facility records as well as death certificates were obtained. Death for each cohort member was ascertained through a search of the National Death Index or through tracing of vital status via a proxy interview. The underlying

causes of death on the death certificates were classified according to ICD-9. End points for this study were deaths from all causes and deaths related to CHD (ICD-9 codes 410–414). The reliability of the National Death Index for epidemiological studies has been previously validated (31,32). Length of follow-up for each individual was calculated from the date of the baseline interview (1982–1984) to either the date of death or the date of last follow-up.

Statistical analysis

Statistical analysis was performed with SAS (Cary, NC) (33) and SUDAAN (Research Triangle Park, NC) (34) and the approach recommended by the National Center for Health Statistics for analyzing the NHEFS was used (35). Means or proportions of baseline risk factors were calculated for the reference group (individuals without diabetes and without depression) and the other three groups (individuals without diabetes but with depression, individuals with diabetes but without depression, and individuals with both diabetes and depression). All-cause and CHD mortality rates per 1,000 person-years of follow-up were calculated for the four groups. Life expectancy and survival times for the four groups were estimated by the Kaplan-Meier product-limit method.

Cox proportional hazards regression models were used to calculate multivariate-adjusted HRs of death for each group compared with the reference group. Simulation data have shown that the Cox model is preferred to the cumulative logistic or person-time logistic regression models for analyzing data from the NHEFS because it takes into account differential follow-up time and does not require the survival time to be exponentially distributed (35). Two multivariate models were developed: a minimal model (model 1) that included confounding sociodemographic variables that were unlikely to be mediators of the relationship between diabetes/depression and mortality and a full model (model 2) that included variables in model 1 and additional variables that were likely to be mediators of the relation between diabetes/depression and mortality. Model 1 included age in 1982, sex, race/ethnicity, poverty:income ratio, education, and marital status. In addition to the variables in model 1, model 2 included smoking,

Table 1—Baseline characteristics in 1982 by presence or absence of diabetes and depression

	No diabetes, not depressed	No diabetes, depressed	Diabetes, not depressed	Diabetes, depressed
<i>n</i>	7,032	2,278	453	262
Mean age (years)	55.7	56.9	62.6	64.2
Sex (%)				
Male	40.0	28.4	43.5	28.6
Female	60.0	71.6	56.5	71.4
Race/ethnicity (%)				
White	87.9	83.1	75.9	72.9
Black/other	12.1	16.9	24.1	27.1
Poverty:income ratio (%)				
<125	16.6	26.1	31.5	36.1
125–399	61.6	59.8	52.0	54.1
≥400	21.8	14.1	16.5	9.8
Education (%)				
<High school graduate	36.7	50.0	59.7	70.6
High school graduate	30.7	27.0	23.1	16.1
>High school graduate	32.6	23.0	17.2	13.3
Marital status (%)				
Not married	28.5	38.7	38.3	48.1
Married	71.5	61.3	61.7	51.9
Physical activity (%)				
Regular	17.3	13.3	9.1	8.4
Light	52.2	41.1	42.8	29.1
Sedentary	30.5	45.6	48.1	62.5
Mean BMI (kg/m ²)	25.9	26.1	28.7	29.0
BMI category (%)				
Normal weight (18.5–24.9 kg/m ²)	47.3	47.8	28.5	25.4
Overweight (25.0–29.9 kg/m ²)	36.1	33.6	37.2	37.5
Obese (≥30 kg/m ²)	16.6	18.6	34.3	37.1
Smoking (%)				
Never smoked	44.8	45.6	48.6	51.5
Former smoker	27.6	23.7	30.9	27.5
Current smoker	27.6	30.7	20.5	21.0
Cancer (%)	3.5	5.4	4.4	5.7
Hypertension (%)	40.6	48.6	69.5	74.4
Heart disease (%)	13.5	22.1	30.9	45.0
Stroke (%)	0.6	1.9	3.1	8.4
Aspirin use (%)	21.7	30.8	25.6	30.9

physical activity, BMI, aspirin use, and comorbid medical conditions at baseline (cancer, hypertension, heart disease, and stroke). In these models, age at death (or age at last contact for censored subjects) was used as the dependent variable. The assumption of proportionality of hazard was assessed for the four diabetes/depression classification groups and each study covariate; all multivariate models satisfied this assumption.

RESULTS— In this nationally representative sample of 10,025 adults followed for an average duration of 8 years

(83,624 person-years of follow-up), 1,925 (19%) of the study subjects died. CHD accounted for 522 (27%) of all deaths. Table 1 shows the baseline characteristics of the study participants. In general, the group of individuals with both diabetes and depression were older, included more women, included more ethnic minorities, were more likely to have sedentary lifestyles, more likely to be overweight/obese, and more likely to have history of hypertension, heart disease, and stroke at baseline compared with the other three groups. On the contrary, individuals with both diabetes and

depression were poorer, were less educated, and were less likely to be married at baseline compared with individuals in the other three groups.

Table 2 presents mortality rates and multivariate-adjusted HRs of death from all-cause and CHD according to diabetes and depression diagnoses at the 1982 interview. Mortality rate per 1,000 person-years of follow-up from all causes and from CHD were highest in individuals with both diabetes and depression and lowest in individuals without diabetes and without depression. Multivariate-adjusted HRs of deaths from all causes were significantly higher for people with diabetes but highest for those with both diabetes and depression. For model 1, compared with the reference group (individuals without diabetes and without depression), the adjusted HR of death was threefold higher for those with both diabetes and depression. After further multivariate adjustment (model 2), the HR of death was 2.5-fold higher for people with both diabetes and depression.

Post hoc comparisons showed that adjusted hazards for all-cause mortality were significantly higher in people with both diabetes and depression compared with those with only diabetes in both the minimal (odds ratio [OR] 1.67 [95% CI 1.30–2.14]) and the full (1.33 [1.02–1.74]) models. Similarly, adjusted hazards for all-cause mortality were significantly higher in people with both diabetes and depression compared with those with only depression in both the minimal (2.44 [1.97–3.03]) and the full (2.08 [1.68–2.59]) models.

For CHD mortality, both the minimal and full multivariate-adjusted models suggested that HRs were higher for people with diabetes but highest for those with both diabetes and depression compared with the reference group. However, post hoc comparisons showed that adjusted hazards for CHD mortality were not significantly higher in people with both diabetes and depression compared with those with only diabetes in both the minimal (OR 1.38 [95% CI 0.89–2.12]) and the full (1.07 [0.67–1.71]) models. In contrast, CHD mortality was significantly higher in people with both diabetes and depression compared with those with only depression in both the minimal (2.37 [1.57–3.58]) and the full (1.88 [1.23–2.87]) models. Figures 1 and 2 show Kaplan-Meier curves of unadjusted

Table 2—HR of death from all causes and coronary heart disease according to diabetes and depression diagnoses in 1982

	No diabetes, not depressed	No diabetes, depressed	Diabetes, not depressed	Diabetes, depressed
<i>n</i>	7,032	2,278	453	262
Person-years of follow-up	59,934	18,616	3,371	1,703
All-cause mortality				
Deaths (<i>n</i>)	1,147	478	166	134
Mortality rate (per 1,000)	19.1	25.7	49.2	78.7
Hazard ratio (95% CI)				
Multivariate model 1	1.00 (reference)	1.34 (1.16–1.54)	1.96 (1.63–2.35)*	3.27 (2.66–4.01)*
Multivariate model 2	1.00 (reference)	1.20 (1.03–1.40)	1.88 (1.55–2.27)†	2.50 (2.04–3.08)†
CHD mortality				
Deaths (<i>n</i>)	301	125	55	41
Mortality rate (per 1,000)	5.0	6.7	16.3	24.1
HR (95% CI)				
Multivariate model 1	1.00 (reference)	1.46 (1.09–1.95)	2.51 (1.81–3.47)‡	3.46 (2.41–4.96)‡
Multivariate model 2	1.00 (reference)	1.29 (0.96–1.74)	2.26 (1.60–3.21)§	2.43 (1.66–3.56)§

Mortality rate was calculated with person-years of follow-up as denominator. CHD was defined by ICD-9 codes 410–414. Multivariate model 1 was adjusted for age in 1982 (years), sex, race/ethnicity (white vs. black/other), poverty:income ratio (<125, 125–399, ≥400%), education (<high school, high school, >high school), marital status (not married vs. married). Multivariate model 2 included additional adjustments for smoking (never, former, current), physical activity (light, regular, sedentary), BMI (<18.5, 18.5–24.9, 25.0–29.9, ≥30 kg/m²), aspirin use (yes vs. no), and comorbid conditions at baseline (cancer, hypertension, heart disease, stroke). *Comparison of diabetes, depressed vs. diabetes, and not depressed for model 1 significantly different (OR 1.67 [95% CI 1.30–2.14]). †Comparison of diabetes, depressed vs. diabetes, and not depressed for model 2 significantly different (OR 1.33 [1.02–1.74]). ‡Comparison of diabetes, depressed vs. diabetes, and not depressed for model 1 significantly different (OR 1.38 [0.89–2.12]). §Comparison of diabetes, depressed vs. diabetes, and not depressed for model 2 significantly different (OR 1.07 [0.67–1.71]).

life expectancy and survival times for both all-cause and CHD mortality during the periods of follow-up for the four groups.

CONCLUSIONS— This is the first study to compare the effects of depression on mortality in people with and without

diabetes. The study provides evidence that over a mean follow-up period of 8 years, the coexistence of diabetes and de-

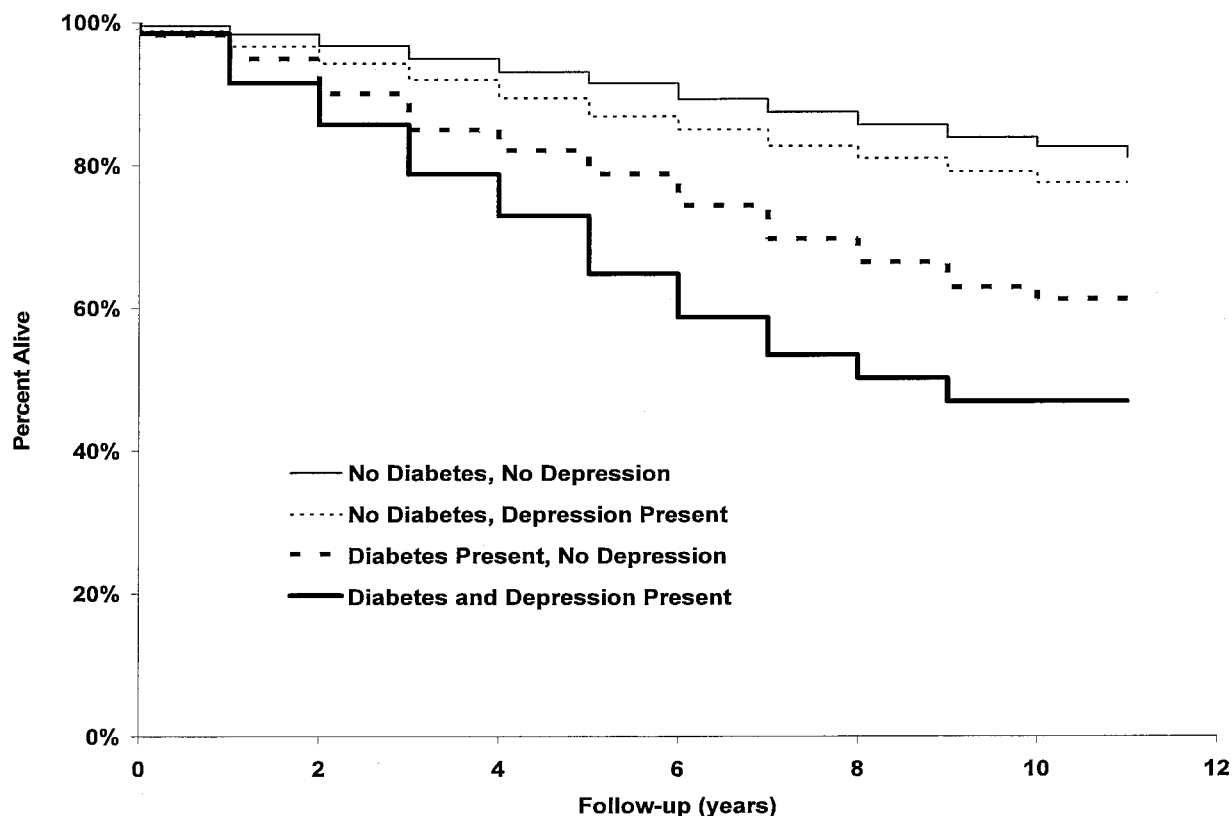


Figure 1—Estimated probability of survival (all-cause mortality) according to diabetes and depression diagnosis in 1982.

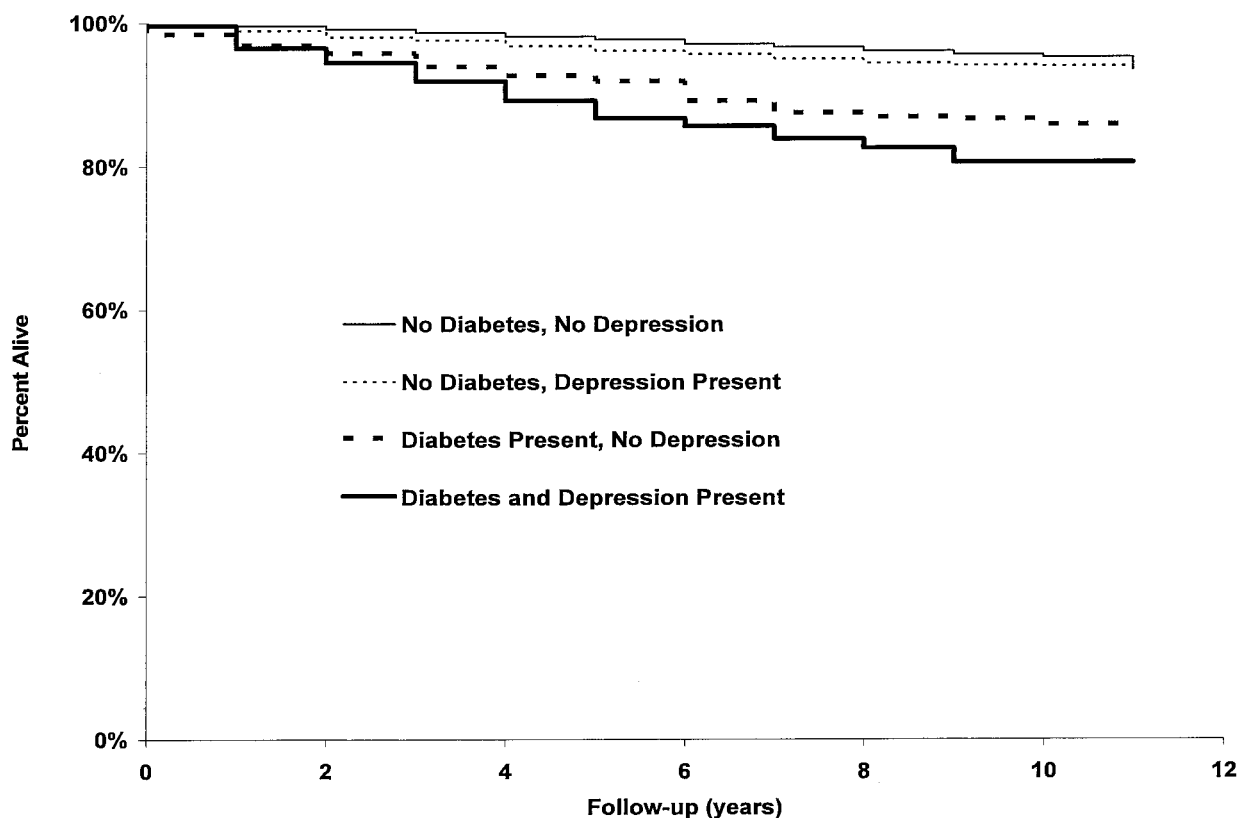


Figure 2—Estimated probability of survival (CHD mortality) according to diabetes and depression diagnosis in 1982.

pression is associated with significantly increased risk of death from all causes beyond that due to having either diabetes or depression alone. After adjusting for clinically relevant confounders, people with both diabetes and depression had a 1.3-fold increased risk of death from all causes compared with people with only diabetes, a 2-fold increased risk of death from all causes compared with people with only depression, and a 2.5-fold increased risk of death compared with people without either diabetes or depression.

We found that in comparison with individuals without diabetes, the risk of death associated with diabetes was approximately twofold (minimal and full models). This is consistent with the findings of other investigators, who have shown that diabetes is associated with a 1.5- to 2-fold increased risk of death (36–40). Our estimates of the risk of death associated with depression ranged from 1.2 to 1.3. This seems lower than estimates from some previous studies (4,7,10) but appears consistent with those from other studies (5,6). It seems that these inconsistencies are due to differences in study design, diagnostic crite-

ria for depression, and duration of follow-up.

In this study, the coexistence of diabetes and depression seems to have a synergistic effect on all-cause mortality. In the full model (model 2), depression alone was associated with a 1.2-fold increased risk of death, diabetes alone was associated with a 1.9-fold increased risk of death, but the combination of diabetes and depression was associated with a 2.5-fold increased risk of death. In post hoc comparisons, people with diabetes and comorbid depression had significantly higher adjusted HRs for all-cause mortality than people with only depression (OR 2.08 [95% CI 1.68–2.59]) and people with only diabetes (1.33 [1.02–1.74]). This is consistent with the findings of Black et al. (17) on the synergistic effects of depression on health outcomes in elderly Mexican Americans with type 2 diabetes.

There is considerable evidence that diabetes is a leading cause of CHD and that it is associated with increased CHD mortality (11). Similarly, there is accumulating evidence that depression is associated with significantly increased CHD

mortality (8,41–43). Our results confirm these earlier findings. Compared with individuals without diabetes or depressive symptoms, those with depressive symptoms had 1.3- to 1.5-fold increased CHD mortality and those with diabetes had 2.3- to 2.5-fold increased CHD mortality. However, even though individuals with both diabetes and depression had significantly higher risk of CHD mortality compared with the reference group and those with only depression, their risk was not significantly higher than people with diabetes alone. This finding suggests that diabetes is a stronger predictor of CHD mortality than depression in this cohort. Additionally, these findings suggest that the presence of diabetes accounts for most of the increased risk of CHD mortality seen in people with diabetes and comorbid depression.

Although several studies have shown an association between depression and increased morbidity and mortality, the underlying mechanisms are unclear. Suicide is a known mechanism through which depression increases the risk of death (1). In addition, depression is hypothesized to decrease physical health by

a combination of biological and psychological mechanisms. Psychological distress and subsequent neurohormonal and immunological changes are thought to increase susceptibility to disease, persistent somatic symptoms of depression are thought to worsen physical health over time, and depressed mood is thought to interfere with physical recovery by impeding treatment seeking, adherence to treatment, and adoption of healthy lifestyles (44,45).

Our results suggest that the effect of depression on all-cause mortality and possibly CHD mortality in people with and without diabetes is independent of sociodemographic characteristics, major cardiac risk factors, and comorbidity. Future studies need to explore other plausible mechanisms that were not addressed in this study, including the role of non-adherence to medical treatments, inflammatory responses, potential cardiotoxic effects of antidepressants, depression-mediated immune suppression, and altered cardiac autonomic tone (44,45).

The major implication of the results of this study is the need for the health care community, especially health professionals who treat people with diabetes, to pay more attention to the recognition and treatment of depression. A growing body of literature suggests that coexisting depression has a negative impact on health in people with diabetes. Previous studies have shown that depression is associated with poor glycemic control, increased risk of complications, decreased quality of life, and increased health care utilization and cost (14–16,19,22). Coexisting depression has recently been shown to increase the odds of functional disability, days lost from work, and days spent in bed among people with diabetes (20,21). This study now shows that the combination of diabetes and depression is associated with increased risk of death beyond that due to having either diabetes or depression alone. Therefore, more aggressive strategies need to be implemented to initiate and optimize treatment for depression among individuals with diabetes.

Strengths of this study include its large sample size, the prospective design, its nationally representative nature, its 8 years of follow-up, and the availability of data on several key risk factors. Nonetheless, the study has several potential limitations. First, the data were based on self-report, making them prone to mis-

classification. However, studies have shown that self-reported data on diabetes, chronic diseases, and several cardiovascular risk factors are reliable (46–48). Second, the diagnosis of depression was not based on the “gold standard” of a clinical interview. However, the CES-D is a widely accepted, valid, and reliable tool for identification of depression in community samples (27–30). Third, we were unable to precisely differentiate type 1 from type 2 diabetes. However, as suggested by Gu et al. (36), the older age of the NHANES I cohort and the high proportion of type 2 diabetic patients in the U.S. indicate that our findings reflect mortality in type 2 diabetic patients. Fourth, participants without diabetes in 1982 may have developed diabetes during follow-up and yet were counted as not having diabetes. Similarly, it is possible that participants without depression in 1982 developed depression during the follow-up period. These individuals would be expected to have higher mortality than individuals who never developed diabetes or depression, which probably lowered our hazard estimates of death for the groups with diabetes. Finally, due to the absence of data on both disease duration and disease severity for diabetes and depression, their independent effects on mortality could not be assessed. Future studies will need to explore their independent effects on mortality.

Despite these potential limitations, the results of this study remain important. The coexistence of diabetes and depression is associated with a significantly increased risk of death from all causes, beyond that due to having either diabetes or depression alone. After adjusting for clinically relevant confounders, people with both diabetes and depression had a 1.3-fold increased risk of death from all causes compared with people with only diabetes, a 2-fold increased risk of death from all causes compared with people with only depression, and a 2.5-fold increased risk of death compared with people without either diabetes or depression.

Acknowledgments—L.E.E. is supported by Grant 5K08HS11418 from the Agency for Health Care Research and Quality, Rockville, MD.

Part of this work was presented at the 64th American Diabetes Association Scientific Sessions, Orlando, Florida, 4–8 June 2004.

References

1. National Institute of Mental Health: *The Numbers Count: Mental Disorders in America, 2001*. Bethesda, MD, U.S. Dept. of Health and Human Services, National Institutes of Health, 2001 (NIH publ. no. 01–4584)
2. Michaud CM, Murray CJ, Bloom BR: Burden of disease: implications for future research. *JAMA* 285:535–539, 2001
3. U.S. Department of Health and Human Services: *Mental Health: A Report of the Surgeon General*. Rockville, MD, U.S. Dept. of Health and Human Services, Substance Abuse and Mental Health Services Administration, Center for Mental Health Services, National Institutes of Health, National Institute of Mental Health, 1999
4. Zheng D, Macera CA, Croft JB, Giles WH, Davis D, Scott WK: Major depression and all-cause mortality among white adults in the United States. *Ann Epidemiol* 7:213–218, 1997
5. Abas M, Hotopf M, Prince M: Depression and mortality in a high-risk population: 11-year follow-up of the Medical Research Council Elderly Hypertension Trial. *Br J Psychiatry* 181:123–128, 2002
6. Schulz R, Beach SR, Ives DG, Martire LM, Ariyo AA, Kop WJ: Association between depression and mortality in older adults: the Cardiovascular Health Study. *Arch Intern Med* 160:1761–1768, 2000
7. Penninx BW, Geerlings SW, Deeg DJ, van Eijk JT, van Tilburg W, Beekman AT: Minor and major depression and the risk of death in older persons. *Arch Gen Psychiatry* 56:889–895, 1999
8. Carney RM, Blumenthal JA, Catellier D: Depression as a risk factor for mortality after acute myocardial infarction. *Am J Cardiol* 92:1277–1281, 2003
9. Jiang W, Alexander J, Christopher E: Relationship of depression to increased risk of mortality and rehospitalization in patients with congestive heart failure. *Arch Intern Med* 161:1849–1856, 2001
10. Cuijpers P, Smit F: Excess mortality in depression: a meta-analysis of community studies. *J Affect Disord* 72:227–236, 2002
11. National Institute of Diabetes and Digestive and Kidney Diseases: *National Diabetes Statistics Fact Sheet: General Information and National Estimates on Diabetes in the United States, 2003*. Bethesda, MD, U.S. Dept. of Health and Human Services, National Institutes of Health, 2003 (NIH publ. no. 04–3892)
12. Anderson RJ, Freedland KE, Clouse RE, Lustman PJ: The prevalence of comorbid depression in adults with diabetes: a meta-analysis. *Diabetes Care* 24:1069–1078, 2001
13. Egede LE, Zheng D: Independent factors

- associated with major depressive disorder in a national sample of individuals with diabetes. *Diabetes Care* 26:104–111, 2003
14. de Groot M, Jacobson AM, Samson JA, Welch G: Glycemic control and major depression in patients with type 1 and type 2 diabetes mellitus. *J Psychosom Res* 46: 425–435, 1999
 15. Ciechanowski PS, Katon WJ, Russo JE, Hirsch IB: The relationship of depressive symptoms to symptom reporting, self-care and glucose control in diabetes. *Gen Hosp Psychiatry* 25:246–252, 2003
 16. de Groot M, Anderson R, Freedland KE, Clouse RE, Lustman PJ: Association of depression and diabetes complications: a meta-analysis. *Psychosom Med* 63:619–630, 2001
 17. Black SA, Markides KS, Ray LA: Depression predicts increased incidence of adverse health outcomes in older Mexican Americans with type 2 diabetes. *Diabetes Care* 26:2822–2828, 2003
 18. Kinder LS, Kamarck TW, Baum A, Orchard TJ: Depressive symptomatology and coronary heart disease in type I diabetes mellitus: a study of possible mechanisms. *Health Psychol* 21:542–552, 2002
 19. Ciechanowski PS, Katon WJ, Russo JE: Depression and diabetes: impact of depressive symptoms on adherence, function, and costs. *Arch Intern Med* 160: 3278–3285, 2000
 20. Egede LE: Diabetes, major depression, and functional disability among U.S. adults. *Diabetes Care* 27:421–428, 2004
 21. Egede LE: Effects of depression on work loss and disability bed days in individuals with diabetes. *Diabetes Care* 27:1751–1753, 2004
 22. Egede LE, Zheng D, Simpson K: Comorbid depression is associated with increased health care use and expenditures in individuals with diabetes. *Diabetes Care* 25:464–470, 2002
 23. Finkelstein EA, Bray JW, Chen H: Prevalence and costs of major depression among elderly claimants with diabetes. *Diabetes Care* 26:415–420, 2003
 24. National Center for Health Statistics: Plan and Operation of the Health and Nutrition Examination Survey, United States, 1971–1973. *Vital Health Stat* 10, 1973
 25. Cohen BB, Barbano HE, Cox CS, Feldman JJ, Finucane FF, Kleinman JC, Madans JH: Plan and operation of the NHANES I Epidemiologic Followup Study 1982–84. *Vital Health Stat* 22, 1987
 26. Cox CS, Mussolino ME, Rothwell ST, Lane MA, Golden CD, Madans JH, Feldman JJ: Plan and operation of the NHANES I Epidemiologic Followup Study 1992. *Vital Health Stat* 35:1–231, 1997
 27. Radloff LS: The CES-D scale: a self-report depression scale for research in the general population. *Appl Psychol Meas* 1:385–401, 1977
 28. Roberts RE, Vernon SW: The Center for Epidemiologic Studies Depression Scale: its use in a community sample. *Am J Psychiatry* 140:41–46, 1983
 29. Knight RG, Williams S, McGee R, Olaman S: Psychometric properties of the Centre for Epidemiologic Studies Depression Scale (CES-D) in a sample of women in middle life. *Behav Res Ther* 35:373–380, 1997
 30. Lyness JM, Noel TK, Cox C, King DA, Conwell Y, Caine ED: Screening for depression in elderly primary care patients: a comparison of the Center for Epidemiologic Studies-Depression Scale and the Geriatric Depression Scale. *Arch Intern Med* 157:449–454, 1997
 31. Stampfer MJ, Willett WC, Speizer FE: Test of the National Death Index. *Am J Epidemiol* 119:837–839, 1984
 32. Rich-Edwards JW, Corsano KA, Stampfer MJ: Test of the National Death Index and Equifax Nationwide Death Search. *Am J Epidemiol* 140:1016–1019, 1994
 33. SAS version 9.0. Cary, NC, SAS Institute, 2002
 34. SUDAAN version 8.0. Research Triangle Park, NC, Research Triangle Institute, 2001
 35. Ingram DD, Makuc DM: Statistical issues in analyzing the NHANES I Epidemiologic Followup Study. National Center for Health Statistics. *Vital Health Stat* 121, 1994
 36. Gu K, Cowie CC, Harris MI: Mortality in adults with and without diabetes in a national cohort of the U.S. population, 1971–1993. *Diabetes Care* 21:1138–1145, 1998
 37. Gu K, Cowie CC, Harris MI: Diabetes and decline in heart disease mortality in US adults. *JAMA* 281:1291–1297, 1999
 38. Lotufo PA, Gaziano JM, Chae CU: Diabetes and all-cause and coronary heart disease mortality among US male physicians. *Arch Intern Med* 161:242–247, 2001
 39. Saydah SH, Eberhardt MS, Loria CM, Brancati FL: Age and the burden of death attributable to diabetes in the United States. *Am J Epidemiol* 156:714–719, 2002
 40. Bertoni AG, Kirk JK, Goff DC Jr, Wagenknecht LE: Excess mortality related to diabetes mellitus in elderly Medicare beneficiaries. *Ann Epidemiol* 14:362–367, 2004
 41. Penninx BW, Beekman AT, Honig A: Depression and cardiac mortality: results from a community-based longitudinal study. *Arch Gen Psychiatry* 58:221–227, 2001
 42. Stewart RA, North FM, West TM: Depression and cardiovascular morbidity and mortality: cause or consequence? *Eur Heart J* 24:2027–2037, 2003
 43. Blumenthal JA, Lett HS, Babyak MA: Depression as a risk factor for mortality after coronary artery bypass surgery. *Lancet* 362:604–609, 2003
 44. Penninx BW, Guralnik JM, Ferrucci L, Simonsick EM, Deeg DJ, Wallace RB: Depressive symptoms and physical decline in community-dwelling older persons. *JAMA* 279:1720–1726, 1998
 45. Carney RM, Freedland KE, Miller GE, Jaffe AS: Depression as a risk factor for cardiac mortality and morbidity: a review of potential mechanisms. *J Psychosom Res* 53:897–902, 2002
 46. Edwards WS, Winn DM, Kurlantzick V, Sheridan S, Berk ML, Reichin S, Collins JG: Evaluation of national health interview survey diagnostic reporting. National Center for Health Statistics. *Vital Health Stat* 120:1–116, 1994
 47. Brownson RC, Jackson-Thompson J, Wilkerson JC, Kiani F: Reliability of information on chronic disease risk factors collected in the Missouri Behavioral Risk Factor Surveillance System. *Epidemiology* 5:545–549, 1994
 48. Bowlin SJ, Morrill BD, Nafziger AN, Lewis C, Pearson TA: Reliability and changes in validity of self-reported cardiovascular disease risk factors using dual response: the behavioral risk factor survey. *J Clin Epidemiol* 49:511–517, 1996