

# Hyperglycemic Crises in Adult Patients With Diabetes

A consensus statement from the American Diabetes Association

ABBAS E. KITABCHI, PHD, MD<sup>1</sup>  
GUILLERMO E. UMPIERREZ, MD<sup>2</sup>

MARY BETH MURPHY, RN, MS, CDE, MBA<sup>1</sup>  
ROBERT A. KREISBERG, MD<sup>3</sup>

**D**iabetic ketoacidosis (DKA) and hyperosmolar hyperglycemic state (HHS) are the two most serious acute metabolic complications of diabetes. Most patients with DKA have autoimmune type 1 diabetes; however, patients with type 2 diabetes are also at risk during the catabolic stress of acute illness such as trauma, surgery, or infection. Table 1 outlines the diagnostic criteria and electrolyte and fluid deficits for both disorders. The mortality rate in patients with DKA is <5% in experienced centers, whereas the mortality rate of patients with HHS still remains high at ~11% (1–8). Death in these conditions is rarely due to the metabolic complications of hyperglycemia or ketoacidosis but rather relates to the underlying precipitating illness. The prognosis of both conditions is substantially worsened at the extremes of age and in the presence of coma and hypotension (7,9–11).

This consensus statement will outline precipitating factors and recommendations for the diagnosis, treatment, and prevention of DKA and HHS in adult subjects. It is based on a previous technical review and more recently published peer-reviewed articles since 2001, which should be consulted for further information.

**PATHOGENESIS**— Although the pathogenesis of DKA is better understood than that of HHS, the basic underlying mechanism for both disorders is a reduction in the net effective action of circulating insulin coupled with a concomitant elevation of counterregulatory hormones, such as glucagon, catecholamines, cortisol, and growth hormone (1,3,4,8–13). DKA and HHS can fall anywhere along the disease continuum of diabetic metabolic derangements. At one extreme, pure DKA without significant hyperosmolality typically indicates the total or relative absence of insulin (seen in type 1 diabetes). At the other extreme, HHS without ketoacidosis typically occurs with lesser degrees of insulin deficiency, as seen in type 2 diabetes. However, in most circumstances, a mixed presentation occurs depending on the duration of symptoms, coexisting medical illnesses, or underlying precipitating cause. In one study (14), 123 DKA laboratory admission profiles were reviewed, and 37% demonstrated an elevated total osmolality.

Hormonal alterations in DKA and HHS lead to increased gluconeogenesis and hepatic and renal glucose production and impaired glucose utilization in peripheral tissues, which results in hyper-

glycemia and hyperosmolality of the extracellular space (1,3,10–17). The combination of insulin deficiency and increased counterregulatory hormones in DKA also leads to the release of free fatty acids into the circulation from adipose tissue (lipolysis) and to unrestrained hepatic fatty acid oxidation to ketone bodies ( $\beta$ -hydroxybutyrate ([ $\beta$ -OHB] and acetoacetate), with resulting ketonemia and metabolic acidosis (18). On the other hand, HHS may be caused by plasma insulin concentrations that are inadequate to facilitate glucose utilization by insulin-sensitive tissues but adequate (as determined by residual C-peptide) to prevent lipolysis and subsequent ketogenesis (15). Both DKA and HHS are associated with glycosuria, leading to osmotic diuresis, with loss of water, sodium, potassium, and other electrolytes (6,15–17). The pathogenic pathways of DKA and HHS are depicted in Fig. 1. The diagnostic criteria and typical total deficits of water and electrolytes in DKA and HHS are summarized in Table 1. As can be seen, DKA and HHS differ in the magnitude of dehydration, ketosis, and acidosis.

DKA is a proinflammatory state producing reactive oxygen species that are indicative of oxidative stress. A recent study (19) has shown elevated levels of proinflammatory cytokines and lipid peroxidation markers, as well as cardiovascular risk factors (plasminogen activator inhibitor-1) and C-reactive protein, which return to normal levels with insulin therapy and remission of hyperglycemia.

## PRECIPITATING FACTORS

The two most common precipitating factors in the development of DKA or HHS are inadequate or inappropriate insulin therapy or infection (1,4,8–12). Other precipitating factors include pancreatitis, myocardial infarction, cerebrovascular accident, and drugs. In addition, new-onset type 1 diabetes or discontinuation of insulin in established type 1 diabetes commonly leads to the development of DKA. Underlying medical illness such as stroke or myocardial infarction that provokes the release of counterregulatory

From the <sup>1</sup>Division of Endocrinology, Diabetes, and Metabolism, University of Tennessee Health Science Center, Memphis, Tennessee; the <sup>2</sup>Clinical Research Center and Diabetes Unit, Grady Memorial Hospital/Emory University School of Medicine; and the <sup>3</sup>Teaching Faculty, University of South Alabama, Baptist Health System, Birmingham, Alabama.

Address correspondence and reprint requests to Dr. Abbas E. Kitabchi, Director, Division of Endocrinology, Diabetes and Metabolism, University of Tennessee Health Science Center, 956 Court Ave., Suite D334, Memphis, Tennessee 38163. E-mail: akitabchi@utmem.edu.

The initial draft of this position statement was prepared by the authors as listed above. The manuscript was then peer-reviewed, modified, and approved by the Professional Practice Committee and the Executive Committee, March 2006.

**Abbreviations:**  $\beta$ -OHB,  $\beta$ -hydroxybutyrate; DKA, diabetic ketoacidosis; HHS, hyperosmolar hyperglycemic state.

The recommendations in this article are based on the evidence reviewed in the following publication: Management of hyperglycemic crises in patients with diabetes (Technical Review). *Diabetes Care* 24:131–153, 2001, as well as subsequent peer-reviewed publications since 2001.

A table elsewhere in this issue shows conventional and Système International (SI) units and conversion factors for many substances.

DOI: 10.2337/dc06-9916

© 2006 by the American Diabetes Association.

Table 1—Diagnostic criteria and typical total body deficits of water and electrolytes in DKA and HHS

	DKA			HHS
	Mild	Moderate	Severe	
Diagnostic criteria and classification				
Plasma glucose (mg/dl)	>250 mg/dl	>250 mg/dl	>250 mg/dl	>600 mg/dl
Arterial pH	7.25–7.30	7.00 to <7.25	<7.00	>7.30
Serum bicarbonate (mEq/l)	15–18	10 to <15	<10	>15
Urine ketone*	Positive	Positive	Positive	Small
Serum ketone*	Positive	Positive	Positive	Small
Effective serum osmolality†	Variable	Variable	Variable	>320 mOsm/kg
Anion gap‡	>10	>12	>12	<12
Mental status	Alert	Alert/drowsy	Stupor/coma	Stupor/coma
Typical deficits				
Total water (l)	6			9
Water (ml/kg)§	100			100–200
Na <sup>+</sup> (mEq/kg)	7–10			5–13
Cl <sup>-</sup> (mEq/kg)	3–5			5–15
K <sup>+</sup> (mEq/kg)	3–5			4–6
PO <sub>4</sub> (mmol/kg)	5–7			3–7
Mg <sup>++</sup> (mEq/kg)	1–2			1–2
Ca <sup>++</sup> (mEq/kg)	1–2			1–2

\*Nitroprusside reaction method. †Calculation of effective serum osmolality: 2[measured Na<sup>+</sup> (mEq/l)] + [glucose (mg/dl)]/18. ‡Calculation of anion gap: (Na<sup>+</sup>) – [Cl<sup>-</sup> + HCO<sub>3</sub><sup>-</sup> (mEq/l)]. §Per kg body wt. Data adapted from refs. 1, 4, and 7.

hormones and/or compromises the access to water is likely to result in severe dehydration and HHS. In most patients, restricted water intake is due to the patient being bedridden or restrained and is exacerbated by the altered thirst response of the elderly. Because 20% of these patients have no history of diabetes, delayed recognition of hyperglycemic symptoms may have led to severe dehydration. El-

derly individuals with new-onset diabetes (particularly residents of chronic care facilities) or individuals with known diabetes who become hyperglycemic and are unaware of it or are unable to take fluids when necessary are at risk for HHS (8,11,12). Drugs that affect carbohydrate metabolism, such as corticosteroids, thiazides, and sympathomimetic agents (e.g., dobutamine and terbutaline) (10) and

second-generation antipsychotics agents (20) may precipitate the development of HHS or DKA. In young patients with type 1 diabetes, psychological problems complicated by eating disorders may be a contributing factor in 20% of recurrent ketoacidosis (21). Factors that may lead to insulin omission in younger patients include fear of weight gain with improved metabolic control, fear of hypoglycemia, rebellion from authority, and the stress of chronic disease. Before 1993, the use of continuous subcutaneous insulin infusion devices had also been associated with an increased frequency of DKA (22), but with improvement in technology and better education of patients, the incidence of DKA appears to have reduced in pump users. However, additional prospective studies are needed to document reduction of DKA incidence with the use of continuous subcutaneous insulin infusion devices (23).

During the past decade, an increasing number of DKA cases without precipitating cause have been reported in children, adolescents, and adult subjects with type 2 diabetes. Observational and prospective studies indicate that over half of newly diagnosed adult African-American and Hispanic subjects with unprovoked DKA have type 2 diabetes (24–27). In such patients, clinical and metabolic features of type 2 diabetes include a high rate of obesity, a strong family history of diabetes, a

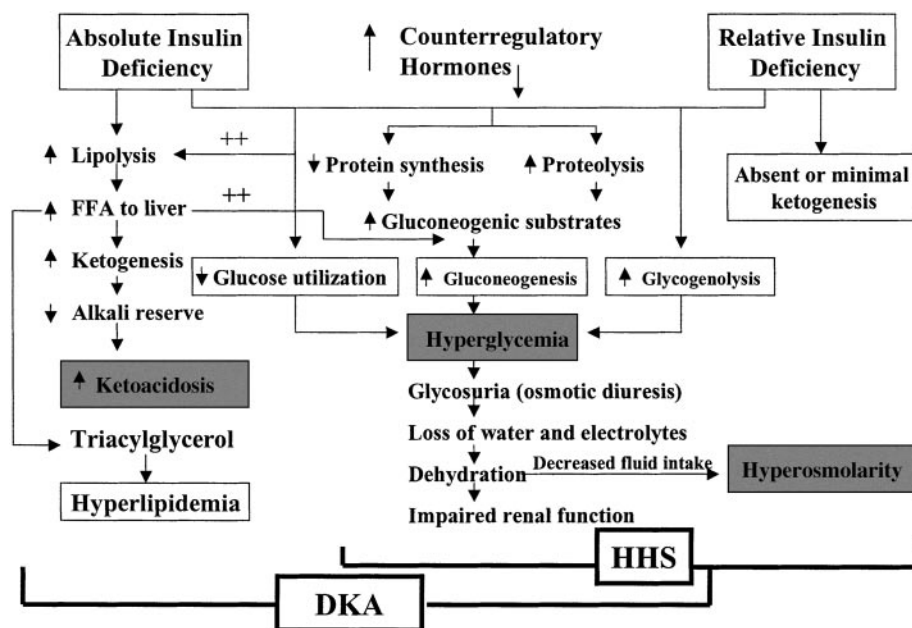


Figure 1—Pathogenesis of DKA and HHS, stress, infection, and/or insufficient insulin. ++Accelerated pathway (ref. 10).

measurable pancreatic insulin reserve, low prevalence of autoimmune markers of  $\beta$ -cell destruction, and the ability to discontinue insulin therapy during follow-up (28,29). This variant of type 2 diabetes has been referred to in the literature as idiopathic type 1 diabetes, atypical diabetes, Flatbush diabetes, type 1.5 diabetes, and more recently as ketosis-prone type 2 diabetes (24,30). At presentation, they have markedly impaired insulin secretion and insulin action (25,26,29), but aggressive management with insulin significantly improves  $\beta$ -cell function, allowing discontinuation of insulin therapy within a few months of follow-up (25–27). Recently, it was reported that the near-normoglycemic remission is associated with a greater recovery of basal and stimulated insulin secretion and that 10 years after diabetes onset, 40% of patients with ketosis-prone type 2 diabetes are still non-insulin dependent (24–27).

Furthermore, a novel genetic mechanism related to the high prevalence of glucose-6-phosphate dehydrogenase deficiency has been linked with ketosis-prone diabetes (31).

## DIAGNOSIS

### History and physical examination

The process of HHS usually evolves over several days to weeks, whereas the evolution of the acute DKA episode in type 1 diabetes or even in type 2 diabetes tends to be much shorter. Although the symptoms of poorly controlled diabetes may be present for several days, the metabolic alterations typical of ketoacidosis usually evolve within a short time frame (typically <24 h). The classic clinical picture of patients with DKA includes a history of polyuria, polydipsia, weight loss, vomiting, abdominal pain, dehydration, weakness, mental status change, and coma. Physical findings may include poor skin turgor, Kussmaul respirations, tachycardia, hypotension, alteration in mental status, shock, and ultimately coma. Up to 25% of DKA patients have emesis, which may be coffee-ground in appearance and guaiac positive. Mental status can vary from full alertness to profound lethargy or coma, with the latter more frequent in HHS. Although infection is a common precipitating factor for both DKA and HHS, patients can be normothermic or even hypothermic primarily because of peripheral vasodilation (32). Severe hypothermia, if present, is a poor prognostic sign. Abdominal pain, sometimes mim-

icking an acute abdomen, is present in 50–75% of DKA cases (33,34). The abdominal pain usually resolves with correction of hyperglycemia and metabolic acidosis. The most common clinical presentation in patients with HHS is altered sensorium (4,8,11,12). Physical examination reveals signs of dehydration with loss of skin turgor, weakness, tachycardia, and hypotension. Fever due to underlying infection is common, and signs of acidosis (Kussmaul breathing, acetone breath) are usually absent. In some patients, focal neurologic signs (hemiparesis, hemianopsia) and seizures (partial motor seizures more common than generalized) may be the dominant clinical features (1,4,6,8).

### Laboratory findings

The initial laboratory evaluation of patients with suspected DKA or HHS should include determination of plasma glucose, blood urea nitrogen, creatinine, serum ketones, electrolytes (with calculated anion gap), osmolality, urinalysis, urine ketones by dipstick, as well as initial arterial blood gases and complete blood count with differential. An electrocardiogram, chest X-ray, and urine, sputum, or blood cultures should also be obtained, if clinically indicated. HbA<sub>1c</sub> may be useful in determining whether this acute episode is the culmination of an evolutionary process in previously undiagnosed or poorly controlled diabetes or a truly acute episode in an otherwise well-controlled patient. The diagnostic criteria for DKA and HHS are shown in Table 1.

DKA consists of the biochemical triad of hyperglycemia, ketonemia, and metabolic acidosis. Accumulation of ketoacids results in an increased anion gap metabolic acidosis. The anion gap is calculated by subtracting the sum of chloride and bicarbonate concentration from the sodium concentration [ $\text{Na}^+ - (\text{Cl}^- + \text{HCO}_3^-)$ ]. The normal anion gap has been historically reported to be  $12 \pm 2$  mEq/l. Most laboratories, however, currently measure sodium and chloride concentrations using ion-specific electrodes, which measure plasma chloride concentration 2–6 mEq/l higher than with prior methods (35). Thus, the normal anion gap using the current methodology is between 7 and 9 mEq/l, and an anion gap >10–12 mEq/l indicates the presence of increased anion gap acidosis. The severity of DKA is classified as mild, moderate, or severe based on the severity of metabolic acidosis (blood pH, bicarbonate, ketones)

and the presence of altered mental status (1). Significant overlap between DKA and HHS has been reported in more than one-third of patients (1,2,14). Although most patients with HHS have an admission pH >7.30, a bicarbonate level >20 mEq/l, mild ketonemia may be present.

The majority of patients with hyperglycemic emergencies present with leukocytosis proportional to blood ketone body concentration (2,10). However, leukocytosis >25,000 may designate infection and require further evaluation (36). The admission serum sodium is usually low because of the osmotic flux of water from the intracellular to the extracellular space in the presence of hyperglycemia. An increase in serum sodium concentration in the presence of hyperglycemia indicates a rather profound degree of water loss. Unless the plasma is cleared of chylomicrons, pseudonormoglycemia and pseudohyponatremia may occur in DKA (37,38). Serum potassium concentration may be elevated because of an extracellular shift of potassium caused by insulin deficiency, hypertonicity, and acidemia (3,10,39).

Patients with low normal or low serum potassium concentration on admission have severe total-body potassium deficiency and require very careful cardiac monitoring and more vigorous potassium replacement, because treatment lowers potassium further and can provoke cardiac dysrhythmia. The classic work of Atchley et al. (40) established that the total body deficit of sodium and potassium might be as high as 500–700 mEq (39,40).

Studies on serum osmolality and mental alteration have established a positive linear relationship between osmolality and mental obtundation (14). The occurrence of stupor or coma in diabetic patients in the absence of definitive elevation of effective osmolality (320 mOsm/kg) demands immediate consideration of other causes of mental status change. In the calculation of effective osmolality  $\{2[\text{measured Na (mEq/l)}] + [\text{glucose (mg/dl)}]/18\}$ , the urea concentration is not taken into account because it is freely permeable and its accumulation does not induce major changes in intracellular volume or osmotic gradient across the cell membrane (4).

Amylase levels are elevated in the majority of patients with DKA, but this may be due to nonpancreatic sources, such as the parotid gland (41). A serum lipase determination may be beneficial in the dif-

ferential diagnosis of pancreatitis; however, lipase could also be elevated in DKA. Finally, abnormal acetoacetate levels may falsely elevate serum creatinine if the clinical laboratory uses a colorimetric method for the creatinine assay (42).

### Differential diagnosis

Not all patients with ketoacidosis have DKA. Starvation ketosis and alcoholic ketoacidosis are distinguished by clinical history and by plasma glucose concentrations that range from mildly elevated (rarely >200 mg/dl) to hypoglycemia. In addition, although alcoholic ketoacidosis can result in profound acidosis, the serum bicarbonate concentration in starvation ketosis is usually not <18 mEq/l. DKA must also be distinguished from other causes of high anion gap metabolic acidosis, including lactic acidosis; ingestion of drugs such as salicylate, methanol, ethylene glycol, and paraldehyde; and chronic renal failure.

A clinical history of previous drug abuse or metformin use should be sought. Measurement of blood lactate, serum salicylate, and blood methanol level can be helpful in these situations. Ethylene glycol (antifreeze) is suggested by the presence of calcium oxalate and hippurate crystals in the urine. Paraldehyde ingestion is indicated by its characteristic strong odor on the breath. Because these intoxicants are low-molecular-weight organic compounds, they can produce an osmolar gap in addition to the anion gap acidosis (10,43). A recent report (44) suggested a relationship between low carbohydrate dietary intake and metabolic acidosis.

Finally, four case reports have shown that patients with undiagnosed acromegaly may present with DKA as the primary manifestation of their disease (45–48).

**TREATMENT** — Successful treatment of DKA and HHS requires correction of dehydration, hyperglycemia, and electrolyte imbalances; identification of comorbid precipitating events; and above all, frequent patient monitoring. Protocols for the management of patients with DKA and HHS are summarized in Figs. 2 and 3.

### Fluid therapy

Initial fluid therapy is directed toward expansion of the intravascular and extravascular volume and restoration of renal perfusion. In the absence of cardiac compromise, isotonic saline (0.9% NaCl) is infused at a rate of 15–20 ml · kg<sup>-1</sup> body

wt · h<sup>-1</sup> or 1–1.5 l during the first hour. The subsequent choice for fluid replacement depends on the state of hydration, serum electrolyte levels, and urinary output. In general, 0.45% NaCl infused at 4–14 ml · kg<sup>-1</sup> body wt · h<sup>-1</sup> is appropriate if the corrected serum sodium is normal or elevated; 0.9% NaCl at a similar rate is appropriate if corrected serum sodium is low (Fig. 2). Successful progress with fluid replacement is judged by hemodynamic monitoring (improvement in blood pressure), measurement of fluid input and output, laboratory values, and clinical examination. Fluid replacement should correct estimated deficits within the first 24 h. In patients with renal or cardiac compromise, monitoring of serum osmolality and frequent assessment of cardiac, renal, and mental status must be performed during fluid resuscitation to avoid iatrogenic fluid overload (1,3,4,10,12,16,17). Adequate rehydration with subsequent correction of the hyperosmolar state has been shown to result in a more robust response to low-dose insulin therapy (49).

### Insulin therapy

Unless the episode of DKA is uncomplicated and mild/moderate (Table 1), regular insulin by continuous intravenous infusion is the treatment of choice. In adult patients, once hypokalemia (K<sup>+</sup> < 3.3 mEq/l) is excluded, an intravenous bolus of regular insulin at 0.1 unit/kg body wt, followed by a continuous infusion of regular insulin at a dose of 0.1 unit · kg<sup>-1</sup> · h<sup>-1</sup> should be administered. This low dose of insulin usually decreases plasma glucose concentration at a rate of 50–75 mg · dl<sup>-1</sup> · h<sup>-1</sup>, similar to a higher-dose insulin regimen (50,51). If plasma glucose does not decrease by 50–75 mg from the initial value in the first hour, the insulin infusion may be doubled every hour until a steady glucose decline is achieved. When the plasma glucose reaches 200 mg/dl in DKA or 300 mg/dl in HHS, it may be possible to decrease the insulin infusion rate to 0.05–0.1 unit · kg<sup>-1</sup> · h<sup>-1</sup>, at which time dextrose may be added to the intravenous fluids (1,4,10). Thereafter, the rate of insulin administration or the concentration of dextrose may need to be adjusted to maintain the above-glucose values until acidosis in DKA or mental obtundation and hyperosmolality in HHS are resolved.

Prospective and randomized studies have reported on the efficacy and cost effectiveness of subcutaneous rapid-acting

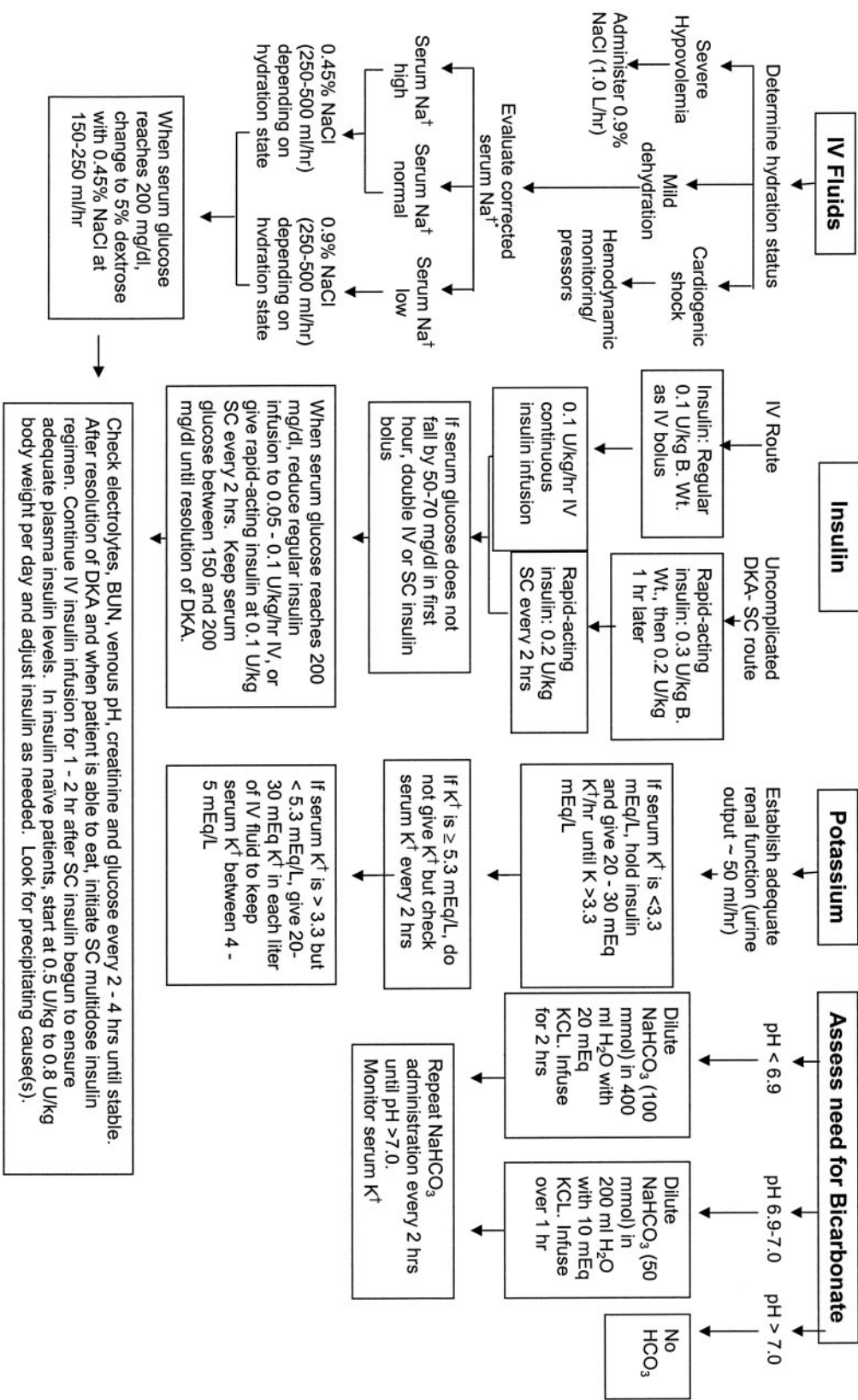
insulin analogs in the management of patients with uncomplicated DKA. Patients treated with subcutaneous rapid-acting insulin received an initial injection of 0.2 units/kg followed by 0.1 unit/kg every hour or an initial dose of 0.3 units/kg followed by 0.2 units/kg every 2 h until blood glucose was <250 mg/dl, then the insulin dose was decreased by half to 0.05 or 0.1 unit/kg, respectively, and administered every 1 or 2 h until resolution of DKA (52,53). There were no differences in length of hospital stay, total amount of insulin administration until resolution of hyperglycemia or ketoacidosis, or number of hypoglycemic events among treatment groups. In addition, the use of insulin analogs allowed treatment of DKA in general wards or in the emergency department, avoiding admission to an intensive care unit. By avoiding intensive care admissions, these investigators reported a reduction of 30% in the cost of hospitalization (51–54).

Ketonemia typically takes longer to clear than hyperglycemia. Direct measurement of β-OHB in the blood is the preferred method for monitoring DKA and has become more convenient with the recent development of bedside meters capable of measuring whole-blood β-OHB (55). The nitroprusside method, which is used in clinical chemistry laboratories, measures acetoacetic acid and acetone; however, β-OHB, the strongest and most prevalent acid in DKA, is not measured by the nitroprusside method. During therapy, β-OHB is converted to acetoacetic acid, which may lead the clinician to believe that ketosis has worsened (42). Therefore, assessments of urinary or serum ketone levels by the nitroprusside method should not be used as an indicator of response to therapy. During therapy for DKA or HHS, blood should be drawn every 2–4 h for determination of serum electrolytes, glucose, blood urea nitrogen, creatinine, osmolality, and venous pH (for DKA). Generally, repeat arterial blood gases are unnecessary during the treatment of DKA in hemodynamically stable patients. Since venous pH is only 0.02–0.03 units lower than arterial pH (56), it is adequate to assess venous pH response to therapy, thus avoiding the pain and potential complications associated with repeated arterial punctures.

Criteria for resolution of DKA include glucose <200 mg/dl, serum bicarbonate ≥18 mEq/l, and venous pH >7.3. When the patient is able to eat, a multiple-dose

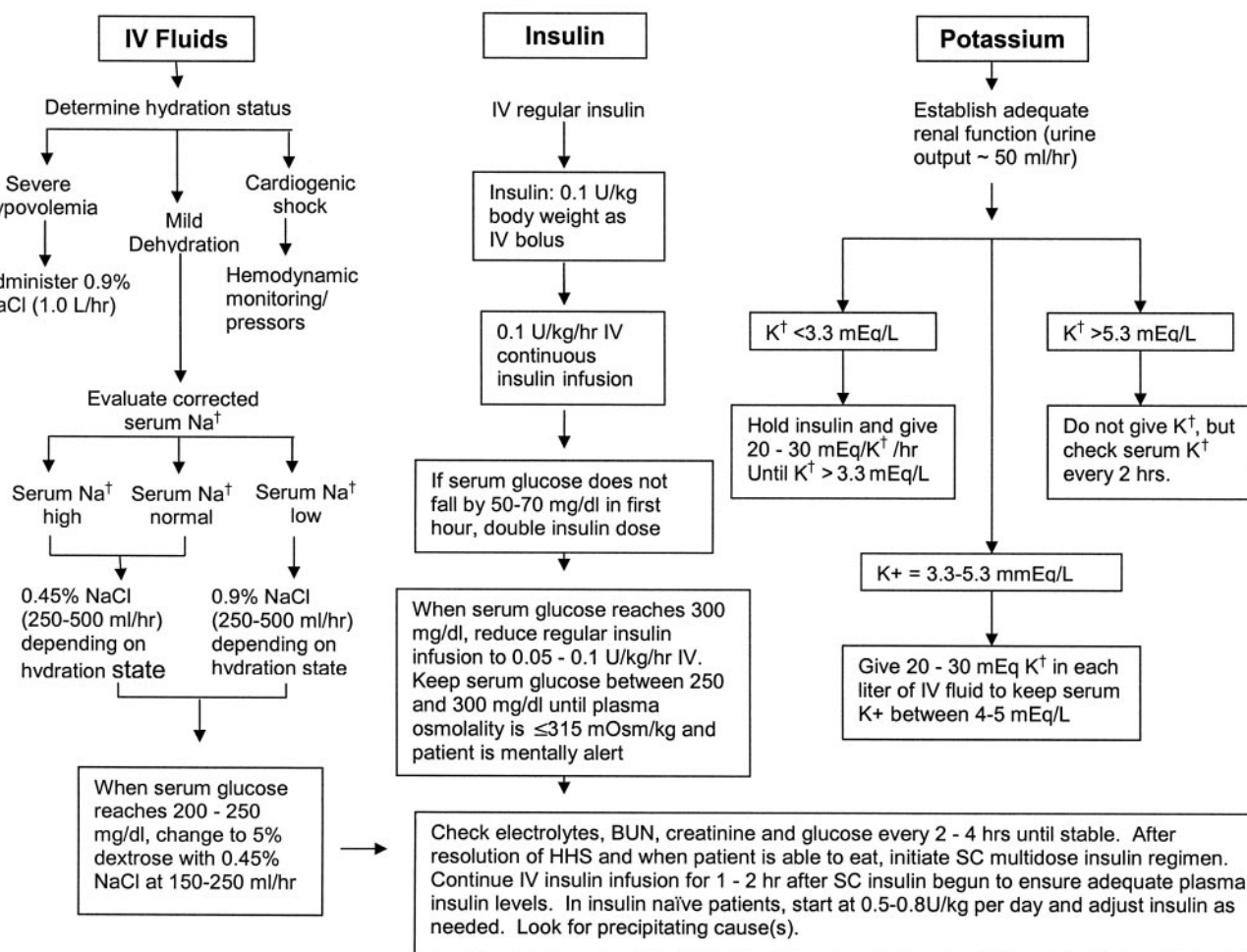


Complete initial evaluation. Check capillary glucose and serum/urine ketones to confirm hyperglycemia and ketonemia/ketonuria. Start IV fluids: 1.0 L of 0.9% NaCl per hour.<sup>†</sup>



**Figure 2**—Protocol for the management of adult patients with DKA. \*DKA diagnostic criteria: serum glucose >250 mg/dl, arterial pH <7.3, serum bicarbonate <18 mEq/L, and moderate ketonuria or ketonemia. Normal laboratory values vary; check local lab normal ranges for all electrolytes. †After history and physical exam, obtain capillary glucose and serum or urine ketones (nitroprusside method). Begin 1 liter of 0.9% NaCl over 1 h and draw arterial blood gases, complete blood count with differential, urinalysis, serum glucose, BUN, electrolytes, chemistry profile, and creatinine levels STAT. Obtain electrocardiogram, chest X-ray, and specimens for bacterial cultures, as needed. \*Serum Na<sup>+</sup> should be corrected for hyperglycemia (for each 100 mg/dl glucose >100 mg/dl, add 1.6 mEq to sodium value for corrected serum sodium value). Adapted from ref. 1.

Complete initial evaluation. Check capillary glucose to confirm hyperglycemia. Start IV fluids: 1.0 L of 0.9% NaCl per hour.†



**Figure 3**— Protocol for the management of adult patients with HHS. HHS diagnostic criteria: serum glucose  $>600$  mg/dl, arterial pH  $>7.3$ , serum bicarbonate  $>15$  mEq/L, and minimal ketonuria and ketonemia. Normal laboratory values vary; check local lab normal ranges for all electrolytes. †After history and physical exam, obtain capillary glucose and serum or urine ketones (nitroprusside method). Begin 1 liter of 0.9% NaCl over 1 h and draw arterial blood gases, complete blood count with differential, urinalysis, serum glucose, BUN, electrolytes, chemistry profile and creatinine levels STAT. Obtain electrocardiogram, chest X-ray, and specimens for bacterial cultures, as needed. Adapted from ref. 1. \*Serum  $\text{Na}^+$  should be corrected for hyperglycemia (for each 100 mg/dl glucose  $>100$  mg/dl, add 1.6 mEq to sodium value for corrected serum sodium value).

insulin schedule should be started that uses a combination of short- or rapid-acting and intermediate- or long-acting insulin as needed to control plasma glucose. Intravenous insulin infusion should be continued for 1–2 h after the subcutaneous insulin is given to ensure adequate plasma insulin levels. An abrupt discontinuation of intravenous insulin coupled with a delayed onset of a subcutaneous insulin regimen may lead to hyperglycemia or recurrence of ketoacidosis. If the patient is to remain n.p.o., it is preferable to continue the intravenous insulin infusion and fluid replacement. Patients with known diabetes may be given insulin at the dose they were receiving before the onset of DKA or HHS. In insulin-naïve patients, a multidose insulin regimen

should be started at a dose of 0.5–0.8 units  $\cdot$  kg $^{-1}$   $\cdot$  day $^{-1}$ , including regular or rapid-acting and basal insulin until an optimal dose is established. However, good clinical judgment and frequent glucose assessment are vital in initiating a new insulin regimen in insulin-naïve patients.

#### Potassium

Despite total-body potassium depletion (40,57), mild to moderate hyperkalemia is not uncommon in patients with hyperglycemic crises. Insulin therapy, correction of acidosis, and volume expansion decrease serum potassium concentration. To prevent hypokalemia, potassium replacement is initiated after serum levels decrease to  $<5.3$  mEq/L, assuming the presence of adequate urine output at 50

ml/h). Generally, 20–30 mEq potassium in each liter of infusion fluid is sufficient to maintain a serum potassium concentration within the normal range of 4–5 mEq/L. Rarely, DKA patients may present with significant hypokalemia. In such cases, potassium replacement should begin with fluid therapy, and insulin treatment should be delayed until potassium concentration is restored to  $>3.3$  mEq/L to avoid arrhythmias or cardiac arrest and respiratory muscle weakness (57–58).

#### Bicarbonate

Bicarbonate use in DKA remains controversial (58). At a pH  $>7.0$ , administration of insulin blocks lipolysis and resolves ketoacidosis without any added bicarbonate (3,18,40). However, the administration

of bicarbonate may be associated with several deleterious effects including an increased risk of hypokalemia (59), decreased tissue oxygen uptake, and cerebral edema (60,61). A prospective randomized study in 21 patients failed to show either beneficial or deleterious changes in morbidity or mortality with bicarbonate therapy in DKA patients with an admission arterial pH between 6.9 and 7.1 (62). This study was small and limited to those patients with an admission arterial pH of  $>6.9$ . The average pH in the bicarbonate group was  $7.03 \pm 0.1$  and for the nonbicarbonate group was  $7.0 \pm 0.02$ . Therefore, if the pH is 6.9–7.0, it seems prudent to administer 50 mmol bicarbonate in 200 ml of sterile water with 10 mEq KCl over 1 h until the pH is  $>7.0$ . No prospective randomized studies concerning the use of bicarbonate in DKA with pH values  $<6.9$  have been reported. Given that severe acidosis may lead to a myriad of adverse vascular effects, adult patients with a pH  $<6.9$  should receive 100 mmol sodium bicarbonate (two ampules) in 400 ml sterile water (an isotonic solution) with 20 mEq KCl administered at a rate of 200 ml/h for 2 h until the venous pH is  $>7.0$ . Bicarbonate as well as insulin therapy lowers serum potassium; therefore, potassium supplementation should be maintained in the intravenous fluid as described above and carefully monitored. (See Fig. 2 for guidelines.) Thereafter, venous pH should be assessed every 2 h until the pH rises to 7.0, and treatment should be repeated every 2 h if necessary. See reference 1 for further review.

### Phosphate

Despite whole-body phosphate deficits in DKA that average  $1.0 \text{ mmol} \cdot \text{kg}^{-1} \cdot \text{body wt}^{-1}$ , serum phosphate is often normal or increased at presentation. Phosphate concentration decreases with insulin therapy. Prospective randomized studies (63,64) have failed to show any beneficial effect of phosphate replacement on the clinical outcome in DKA, and overzealous phosphate therapy can cause severe hypocalcemia (63,65). Therefore, the routine use of phosphate in the treatment of DKA or HHS has resulted in no clinical benefit to the patient (63). However, to avoid cardiac and skeletal muscle weakness and respiratory depression due to hypophosphatemia, careful phosphate replacement may sometimes be indicated in patients with cardiac dysfunction, anemia, or respiratory depression and in those with a

serum phosphate concentration  $<1.0$  mg/dl (66,67). When needed, 20–30 mEq/l potassium phosphate can be added to replacement fluids.

**COMPLICATIONS** — The most common complications of DKA and HHS include hypoglycemia and hypokalemia due to overzealous treatment with insulin. Low potassium may also occur as a result of treatment of acidosis with bicarbonate. Hyperglycemia may occur secondary to interruption/discontinuance of intravenous insulin therapy after recovery from DKA but without subsequent coverage with subcutaneous insulin. Commonly, patients recovering from DKA develop a transient hyperchloremic non-anion gap acidosis (68–70). The hyperchloremic acidosis is caused by the loss of large quantities of ketoanions that occur during the development of DKA. Because ketoanions are metabolized with regeneration of bicarbonate, the prior loss of ketoacid anions in the urine hinders regeneration of bicarbonate during treatment (71). Other mechanisms include the administration of intravenous fluids containing chloride that exceeds the plasma chloride concentration and the intracellular shifts of  $\text{NaHCO}_3$  during correction of DKA (70).

Cerebral edema is a rare but frequently fatal complication of DKA, occurring in 0.7–1.0% of children with DKA. It is most common in children with newly diagnosed diabetes, but it has been reported in children with known diabetes and in young people in their twenties (72–74). Fatal cases of cerebral edema have also been reported with HHS. Clinically, cerebral edema is characterized by deterioration in the level of consciousness, lethargy, decreased arousal, and headache. Neurological deterioration may be rapid, with seizures, incontinence, pupillary changes, bradycardia, and respiratory arrest. These symptoms progress as brain stem herniation occurs. The progression may be so rapid that papilledema is not found. Once the clinical symptoms other than lethargy and behavioral changes occur, mortality is high ( $>70\%$ ), with only 7–14% of patients recovering without permanent morbidity. Although the mechanism of cerebral edema is not known, it may result from osmotically driven movement of water into the central nervous system when plasma osmolality declines too rapidly with the treatment of DKA or HHS (72–74). However, a recent study (75) using magnetic resonance imaging to assess ce-

rebral water diffusion and cerebral vascular perfusion during the treatment of 14 children with DKA found that the cerebral edema was not a function of cerebral tissue edema but rather a function of increased cerebral perfusion. There is a lack of information on the morbidity associated with cerebral edema in adult patients; therefore, any recommendations for adult patients are based on clinical judgment rather than scientific evidence. Preventive measures that might decrease the risk of cerebral edema in high-risk patients are gradual replacement of sodium and water deficits in patients who are hyperosmolar and the addition of dextrose to the hydrating solution once blood glucose reaches 200 mg/dl in DKA and 300 mg/dl in HHS. In HHS, a glucose level of 250–300 mg/dl should be maintained until hyperosmolality and mental status improves and the patient becomes clinically stable. Hypoxemia and, rarely, noncardiogenic pulmonary edema may complicate the treatment of DKA. Hypoxemia is attributed to a reduction in colloid osmotic pressure that results in increased lung water content and decreased lung compliance (10). Patients with DKA who have a widened alveolo-arteriolar oxygen gradient noted on initial blood gas measurement or with pulmonary rales on physical examination appear to be at higher risk for the development of pulmonary edema.

**PREVENTION** — Many cases of DKA and HHS can be prevented by better access to medical care, proper education, and effective communication with a health care provider during an intercurrent illness. The observation that stopping insulin for economic reasons is a common precipitant of DKA in urban African Americans and Hispanics (2,76,77) underscores the need for our health care delivery systems to address this problem, which is costly and clinically serious (78). Sick-day management should be reviewed periodically with all patients. It should include specific information on 1) when to contact the health care provider, 2) blood glucose goals and the use of supplemental short- or rapid-acting insulin during illness, 3) means to suppress fever and treat infection, and 4) initiation of an easily digestible liquid diet containing carbohydrates and salt. Most importantly, the patient should be advised to never discontinue insulin and to seek professional advice early in the course of the illness. Successful sick-day management depends on in-



involvement by the patient and/or a family member. The patient/family member must be able to accurately measure and record blood glucose, urine, or blood ketone determination when blood glucose is >300 mg/dl; insulin administered; temperature; respiratory and pulse rates; and body weight, and must be able to communicate all of this to a health care professional. Adequate supervision and help from staff or family may prevent many of the admissions for HHS due to dehydration among elderly individuals who are unable to recognize or treat this evolving condition. Better education of caregivers as well as patients regarding signs and symptoms of new-onset diabetes; conditions, procedures, and medications that worsen diabetes control; and the use of glucose monitoring could potentially decrease the incidence and severity of HHS.

The annual incidence rate for DKA from population-based studies ranges from 4.6 to 8 episodes per 1,000 patients with diabetes, with a trend toward an increased hospitalization rate in the past 2 decades. The incidence of HHS accounts for <1% of all primary diabetic admissions. Significant resources are spent on the cost of hospitalization. DKA episodes represent more than \$1 of every \$4 spent on direct medical care for adult patients with type 1 diabetes and \$1 of every \$2 in those patients experiencing multiple episodes. Based on an annual average of 100,000 hospitalizations for DKA in the U.S., with an average cost of \$13,000 per patient (79), the annual hospital cost for patients with DKA may exceed \$1 billion per year. Many of these hospitalizations could be avoided by devoting adequate resources to apply the measures described above. Because repeated admissions for DKA are estimated to drain approximately one of every two health care dollars spent on adult patients with type 1 diabetes, resources need to be re-directed toward prevention by funding better access to care and educational programs tailored to individual needs, including ethnic and personal health care beliefs. In addition, resources should be directed toward the education of primary care providers and school personnel so that they can identify signs and symptoms of uncontrolled diabetes and new-onset diabetes can be diagnosed earlier. This has been shown to decrease the incidence of DKA at the onset of diabetes (80).

**NOTE ADDED IN PROOF**— A recent study from a city hospital reports

that active cocaine use is an independent risk factor for recurrent DKA (81).

**Acknowledgments**— Studies cited by the authors were supported in part by USPHS grants RR00211 (to the General Clinical Research Center) and AM 21099, training grant AM 07088 of the National Institutes of Health, and grants from Novo-Nordisk, Eli Lilly, the American Diabetes Association, and the Abe Goodman Fund.

**References**

1. Kitabchi AE, Umpierrez GE, Murphy MB, Barrett EJ, Kreisberg RA, Malone JL, Wall BM: Management of hyperglycemic crises in patients with diabetes (Technical Review). *Diabetes Care* 24:131–153, 2001
2. Umpierrez GE, Kelly JP, Navarrete JE, Casals MM, Kitabchi AE: Hyperglycemic crises in urban blacks. *Arch Intern Med* 157:669–675, 1997
3. DeFronzo RA, Matzuda M, Barret E: Diabetic ketoacidosis: a combined metabolic-nephrologic approach to therapy. *Diabetes Rev* 2:209–238, 1994
4. Ennis ED, Stahl EJVB, Kreisberg RA: The hyperosmolar hyperglycemic syndrome. *Diabetes Rev* 2:115–126, 1994
5. Fishbein HA, Fishbein HA, Palumbo PJ: Acute metabolic complications in diabetes. In *Diabetes in America*. National Diabetes Data Group, National Institute of Health, 1995, p. 283–291 (NIH publ. no. 95-1468).
6. Lorber D: Nonketotic hypertonicity in diabetes mellitus. *Med Clin North Am* 79: 39–52, 1995
7. Kreisberg RA: Diabetic ketoacidosis: an update. *Crit Care Clin* 3:817–834, 1987
8. Wachtel TJ, Tctu-Mouradjian LM, Goldman DL, Ellis SA, O'Sullivan PS: Hyperosmolarity and acidosis in diabetes mobility. *J Gen Int Met* 6:495–502, 1991
9. Malone ML, Gennis V, Goodwin JS: Characteristics of diabetic ketoacidosis in older versus younger adults. *J Am Geriatr Soc* 40:1100–1104, 1992
10. Kitabchi AE, Umpierrez GE, Murphy MB: Diabetic ketoacidosis and hyperglycemic hyperosmolar state. In *International Textbook of Diabetes Mellitus*. 3rd ed. DeFronzo RA, Ferrannini E, Keen H and Zimmet P, Eds. John Wiley & Sons, Chichester, U.K., 2004, p. 1101–1119
11. Wachtel TJ, Silliman RA, Lambertson P: Prognostic factors in the diabetic hyperosmolar state. *J Am Geriatr Soc* 35:737–741, 1978
12. Wachtel TJ: The diabetic hyperosmolar state. *Clin Geriatr Med* 6:797–806, 1990
13. Gerich JE, Martin MM, Recant L: Clinical and metabolic characteristics of hyperosmolar nonketotic coma. *Diabetes* 20:228–238, 1971
14. Kitabchi AE, Fisher JN: Insulin therapy of

- diabetic ketoacidosis: physiologic versus pharmacologic doses of insulin and their routes of administration. In *Handbook of Diabetes Mellitus*. Brownlee M, Ed. New York, Garland ATPM, 1981, p. 95–149
15. Chupin M, Charbonnel B, Chupin F: C-peptide blood levels in ketoacidosis and in hyperosmolar non-ketotic diabetic coma. *ACTA Diabetol* 18:123–128, 1981
16. Hillman K: Fluid resuscitation in diabetic emergencies: a reappraisal. *Intensive Care Med* 13:4–8, 1987
17. Delaney MF, Zisman A, Kettyle WM: diabetic ketoacidosis and hyperglycemic hyperosmolar nonketotic syndrome. *Endocrinol Metab Clin North Am* 29:683–705, 2000
18. McGarry JD, Woeltje KF, Kuwajima M, Foster DW: Regulation of ketogenesis and the renaissance of carnitine palmitoyl-transferase. *Diabete Metab Rev* 5:271–284, 1989
19. Stentz FB, Umpierrez GE, Cuervo R, Kitabchi AE: Proinflammatory cytokines, markers of cardiovascular risks, oxidative stress, and lipid peroxidation in patients with hyperglycemic crises. *Diabetes* 53:2079–2086, 2004
20. Newcomer JW: Second generation (atypical) antipsychotics and metabolic effects: a comprehensive literature review. *CNS Drugs* 19 (Suppl. 1):1–93, 2005
21. Polonsky WH, Anderson BJ, Lohrer PA, Aponte JE, Jacobson AM, Cole CF: Insulin omission in women with IDDM. *Diabetes Care* 17:1178–1185, 1994
22. Peden NR, Broatan JT, McKenry JB: Diabetic ketoacidosis during long-term treatment with continuous subcutaneous insulin infusion. *Diabetes Care* 7:1–5, 1984
23. Weissberg-Benchell J, Antisdell-Lomaglio J, Seshadri, R: Insulin pump therapy: a meta-analysis. *Diabetes Care* 26:1079–1087, 2003
24. Umpierrez GE, Smiley D, Kitabchi AE: Ketosis-prone type 2 diabetes mellitus. *Annals Int Med* 144:350–357, 2006
25. Maldonado M, Hampe CS, Gaur LK, D'Amico S, Iyer D, Hammerle LP, Bolgiano D, Rodriguez L, Rajan A, Lernmark A, Balasubramanyam A: Ketosis-prone diabetes: dissection of a heterogeneous syndrome using an immunogenetic and beta-cell functional classification, prospective analysis, and clinical outcomes. *J Clin Endocrinol Metab* 88:5090–5098, 2003
26. Mauvais-Jarvis F, Sobngwi E, Porcher R, Riveline JP, Kevorkian JP, Vaisse C, Charpentier G, Guillausseau PJ, Vexiau P, Gautier JF: Ketosis-prone type 2 diabetes in patients of sub-Saharan African origin: clinical pathophysiology and natural history of beta-cell dysfunction and insulin resistance. *Diabetes* 53:645–653, 2004
27. Umpierrez GE, Casals MM, Gebhart SP, Mixon PS, Clark WS, Phillips LS: Diabetic ketoacidosis in obese African-Americans.



- Diabetes* 44:790–795, 1995
28. Banerji MA, Chaiken RL, Huey H, Tuomi T, Norin AJ, Mackay IR, Rowley MJ, Zimmet PZ, Lebovitz HE: GAD antibody negative NIDDM in adult black subjects with diabetic ketoacidosis and increased frequency of human leukocyte antigen DR3 and DR4: Flatbush diabetes. *Diabetes* 43: 741–745, 1994
  29. Umpierrez GE, Woo W, Hagopian WA, Isaacs SD, Palmer JP, Gaur LK, Nepom GT, Clark WS, Mixon PS, Kitabchi AE: Immunogenetic analysis suggests different pathogenesis for obese and lean African-Americans with diabetic ketoacidosis. *Diabetes Care* 22:1517–1523, 1999
  30. Kitabchi AE: Editorial: Ketosis-prone diabetes: a new subgroup of patients with atypical type 1 and type 2 diabetes? *J Clin Endocrinol Metab* 88:5087–5089, 2003
  31. Sobngwi E, Gautier JF, Zhovorkian JP, Villette JM, Riveline JP, Kvang S, Veziar P, Led, SM, Vaisse C, Mauvais-Jarris F: High prevalence of glucose 6-phosphate dehydrogenase deficiency without gene mutation suggests a novel genetic mechanism predisposed to ketosis-prone diabetes *J Clin End Metab* 90:4446–4451, 2005
  32. Matz R: Hypothermia in diabetic acidosis. *Hormones* 3:36–41, 1972
  33. Umpierrez G, Freire AX: Abdominal pain in patients with hyperglycemic crises. *J Crit Care* 17:63–67, 2002
  34. Campbell IW, Duncan LJ, Innes JA, MacCuish AC, Munro JF: Abdominal pain in diabetic metabolic decompensation: clinical significance. *JAMA* 233:166–168, 1975
  35. Winter SD, Pearson JR, Gabow PA, Schultz AL, Lepoff RB: The fall of the serum anion gap. *Arch Intern Med* 150: 311–313
  36. Slovis CM, Mark VG, Slovis RJ, Bain RP: Diabetic ketoacidosis & infection leukocyte count and differential as early predictors of infection. *Am J Emerg Med* 5:1–5, 1987
  37. Kaminska ES, Pourmoabbed G: Spurious laboratory values in diabetic ketoacidosis and hyperlipidaemia. *Am J Emerg Med* 11: 77–80, 1993
  38. Rumbak MJ, Hughes TA, Kitabchi AE: Pseudonormoglycaemia in diabetic ketoacidosis with elevated triglycerides. *Am J Emerg Med* 9:61–63, 1991
  39. Adrogue HJ, Lederer ED, Suki WN, Eknayan G: Determinants of plasma potassium levels in diabetic ketoacidosis. *Medicine* 65:163–171, 1986
  40. Atchley DW, Loeb RF, Richards DW, Benedict EM, Driscoll ME: A detailed study of electrolyte balance following withdrawal and reestablishment of insulin therapy. *J Clin Invest* 12:297–321, 1933
  41. Vinicor F, Lehrner LM, Karn RC, Merritt AD: Hyperamylasemia in diabetic ketoacidosis: sources and significance. *Ann Intern Med* 91:200–204, 1979
  42. Gerard SK, Rhayam-Bashi H: Characterization of creatinine error in ketotic patients: a prospective comparison of alkaline picrate methods with an enzymatic method. *Am J Clin Pathol* 84:659–661, 1985
  43. Kitabchi AE, Fisher JN, Murphy MB, Rumbak MJ: Diabetic ketoacidosis and the hyperglycemic hyperosmolar non-ketotic state. In *Joslin's Diabetes Mellitus*. 13th ed. Kahn CR, Weir GC, Eds. Philadelphia, Lea & Febiger, 1994, p. 738–770
  44. Shah P, Isley WL: Ketoacidosis during a low carbohydrate diet. *N Engl J Med* 354: 97–98, 2006
  45. Soveid M, Ranjbar-Omrani G: Ketoacidosis as the primary manifestation of acromegaly. *Arch Iranian Med* 8:326–328, 2005
  46. Katz JR, Edwards R, Kahn M, Conway GS: Acromegaly presenting with diabetic ketoacidosis. *Postgrad Med J* 72:682–683, 1996
  47. Vidal-Cortada J, Conget-Donlo JI, Navarro-Tellex MP, Halperin Rabinovic I, Vilardell Latorre E: Diabetic ketoacidosis as the first manifestation of acromegaly. *An Med Interna* 12:76–78, 1995
  48. Szeto CC, Li KY, Ko GT, Szeto CC, Li KY, Ko GT, Chow CC, Yeung VT, Chan JC, Cockram CS: Acromegaly presenting in a woman with diabetic ketoacidosis and insulin resistance. *Int J Clin Pract* 51:476–477, 1997
  49. Bratusch-Marrain PR, Komajati M, Waldhausl W: The effect of hyperosmolarity on glucose metabolism. *Pract Cardiol* 11: 153–163, 1985
  50. Kitabchi AE, Ayyagari V, Guerra SM: The efficacy of low-dose versus conventional therapy of insulin for treatment of diabetic ketoacidosis. *Ann Intern Med* 84: 633–638, 1976
  51. Kitabchi AE: Low dose insulin therapy in diabetic ketoacidosis: fact or fiction. *Diabetes Metab Rev* 5:337–363, 1989
  52. Umpierrez GE, Latif K, Stoever J, Cuervo R, Park L, Freire AX, A EK: Efficacy of subcutaneous insulin lispro versus continuous intravenous regular insulin for the treatment of patients with diabetic ketoacidosis. *Am J Med* 117:291–296, 2004
  53. Umpierrez GE, Cuervo R, Karabell A, Latif K, Freire AX, Kitabchi AE: Treatment of diabetic ketoacidosis with subcutaneous insulin aspart. *Diabetes Care* 27:1873–1878, 2004
  54. Della Manna T, Steinmetz L, Campos PR, Farhat SC, Schwartsman C, Kuperman H, Setian N, Damiani D: Subcutaneous use of a fast-acting insulin analog: an alternative treatment for pediatric patients with diabetic ketoacidosis. *Diabetes Care* 28: 1856–1861, 2005
  55. Guerci B, Benichou M, Floriot M, Bohme P, Fougnot S, Franck P, Drouin P: Accuracy of an electrochemical sensor for measuring capillary blood ketones by fingerstick samples during metabolic deterioration after continuous subcutaneous insulin infusion interruption in type 1 diabetic patients. *Diabetes Care* 26:1137–1141, 2003
  56. Kelly AM: The case for venous rather than arterial blood gases in diabetic ketoacidosis. *Emerg Med Australia* 18:64–67, 2006
  57. Beigelman PM: Potassium in severe diabetic ketoacidosis (Editorial). *Am J Med* 54:419–420, 1973
  58. Abramson E, Arky R: Diabetic acidosis with initial hypokalemia: therapeutic implications. *JAMA* 196:401–403, 1966
  59. Viallon A, Zeni F, Lafond P, Venet C, Tardy B, Page Y, Bertrand JC: Does bicarbonate therapy improve the management of severe diabetic ketoacidosis? *Crit Care Med* 27:2690–2693, 1999
  60. Glaser NS, Wooten-Gorges SL, Marcin JP, Buonocore MH, Dicarolo J, Neely EK, Barnes P, Bottomly J, Kuppermann N: Mechanism of cerebral edema in children with diabetic ketoacidosis. *J Pediatr* 145:149–150, 2004
  61. Glaser NS, Wooten-Gorges SL, Buonocore MH, Marcin JP, Rewers A, Strain J, Dicarolo J, Neely EK, Barnes P, Kuppermann N: Frequency of subclinical cerebral edema in children with diabetic ketoacidosis. *Pediatr Diabetes* 7:75–80, 2006
  62. Morris LR, Murphy MB, Kitabchi AE: Bicarbonate therapy in severe diabetic ketoacidosis. *Ann Intern Med* 105:836–840, 1986
  63. Fisher JN, Kitabchi AE: A randomized study of phosphate therapy in the treatment of diabetic ketoacidosis. *J Clin Endocrinol Metab* 57:177–180, 1983
  64. Barsotti MM: Potassium phosphate and potassium chloride in the treatment of diabetic ketoacidosis. *Diabetes Care* 3:569, 1980
  65. Winter RJ, Harris CJ, Phillips LS, Green OC: Diabetic ketoacidosis: induction of hypocalcemia and hypomagnesemia by phosphate therapy. *Am J Med* 67:897–900, 1979
  66. Keller V, Berger W: Prevention of hypophosphalemia by phosphate infusion during treatment of diabetic ketoacidosis and hyperosmolar coma. *Diabetes* 29:87–95, 1980
  67. Kreisberg RA: Phosphorus deficiency and hypophosphatemia. *Hosp Pract* 12:121–128, 1977
  68. Adrogue HJ, Wilson H, Boyd AE 3rd, Suki WN, Eknayan G: Plasma acid-base patterns in diabetic ketoacidosis. *N Engl J Med* 307:1603–1610, 1982
  69. Oh MS, Carroll HJ, Goldstein DA, Fein IA: Hyperchloremic acidosis during the recovery phase of diabetic ketosis. *Ann Intern Med* 89:925–927, 1978

70. Oh MS, Carroll HJ, Uribarri J: Mechanism of normochloremic and hyperchloremic acidosis in diabetic ketoacidosis. *Nephron* 54:1–6, 1990
71. Fleckman AM: Diabetic ketoacidosis. *Endocrinol Metabol Clin North Am* 22:181–207, 1993
72. Duck SC, Wyatt DT: Factors associated with brain herniation in the treatment of diabetic ketoacidosis. *J Pediatr* 113:10–14, 1988
73. Glaser N, Barnett P, McCaslin I, Nelson D, Trainor J, Louie J, Kaufman F, Quayle K, Roback M, Malley R, Kuppermann N: Risk factors for cerebral edema in children with diabetic ketoacidosis: the Pediatric Emergency Medicine Collaborative Research Committee of the American Academy of Pediatrics. *N Engl J Med* 344:264–269, 2001
74. Silver SM, Clark EC, Schroeder BM, Sterns RH: Pathogenesis of cerebral edema after treatment of diabetic ketoacidosis. *Kidney Int* 51:1237–1244, 1997
75. Glaser NS, Wootton-Gorges SL, Marcin JP, Buonocore MH, DiCarlo J, Neely K, Barnes P, Bottomly J, Kuppermann N: Mechanism of cerebral edema in children with diabetic ketoacidosis. *J Pediatr* 145:164–171, 2004
76. Musey VC, Lee JK, Crawford R, Klatka MA, McAdams D, Phillips LS: Diabetes in urban African-Americans. I. Cessation of insulin therapy is the major precipitating cause of diabetic ketoacidosis. *Diabetes Care* 18:483–489, 1995
77. Maldonado MR, Chong ER, Oehl MA, Balasubramanyam A: Economic impact of diabetic ketoacidosis in a multiethnic indigent population: analysis of costs based on the precipitating cause. *Diabetes Care* 26:1265–1269, 2003
78. Kitabchi AE: Hyperglycemic crises: improving prevention and management. *Fam Physician* 71:1659–1660, 2005
79. Javor KA, Kotsanos JG, McDonald RC, Baron AD, Kesterson JG, Tierney WM: Diabetic ketoacidosis charges relative to medical charges of adult patients with type 1 diabetes. *Diabetes Care* 20:349–354, 1997
80. Vanelli M, Chiari G, Ghizzoni L, Costi G, Giacalone T, Chiarelli F: Effectiveness of a prevention program for diabetic ketoacidosis in children: an 8-year study in schools and private practices. *Diabetes Care* 22:7–9, 1999
81. Nyenwe E, Loganathan R, Blum S, Ezuteh D, Erani D, Wan J, Palace M, Kitabchi A: Active use of cocaine: an independent risk factor for recurrent diabetic ketoacidosis in a city hospital. *Endocrine Practice*. In press