

The Human Placenta in Gestational Diabetes Mellitus

The insulin and cytokine network

GERNOT DESOYE, PHD¹
SYLVIE HAUGUEL-DE MOUZON, PHD²

The placenta is a complex fetal organ that fulfills pleiotropic roles during fetal growth. It separates the maternal and fetal circulation, with which it is in contact through different surfaces, i.e., the syncytiotrophoblast exposes the placenta to the maternal circulation and the endothelium is in contact with fetal blood. Because of this unique position, the placenta is exposed to the regulatory influence of hormones, cytokines, growth factors, and substrates present in both circulations and, hence, may be affected by changes in any of these. In turn, it can produce molecules that will affect mother and fetus independently.

The human placenta expresses virtually all known cytokines including tumor necrosis factor (TNF)- α , resistin, and leptin, which are also produced by the adipose cells. The discovery that some of these adipokines are key players in the regulation of insulin action suggests possible novel interactions between the placenta and adipose tissue in understanding pregnancy-induced insulin resistance. The interplay between the two systems becomes more evident in gestational diabetes mellitus (GDM).

In diabetes, the placenta undergoes a variety of structural and functional changes (rev. in 1–3). Their nature and extent depend on a range of variables including the quality of glycemic control achieved during the critical periods in placental development, the modality of treatment, and the time period of severe

departures from excellent metabolic control of a nondiabetic environment.

Placental development is characterized by three distinct periods. At the beginning of gestation, a series of critical proliferation and differentiation processes predominantly of the trophoblast eventually lead to the formation of villous and extravillous structures. The latter anchor the placenta in the uterus and remodel the uterine spiral arteries into low resistance vessels. Then the newly formed villi differentiate through various steps of maturation. The end of gestation is associated with placental mass expansion, i.e., villous growth (Fig. 1). During the first half of gestation, the trophoblast is the key tissue that undergoes the most profound alterations, whereas extensive angiogenesis and vascularization occur in the second half of gestation, i.e., the endothelium is the site of the more prominent processes, although there is overlap. This period is also accompanied by extensive vascular remodeling and stabilization of the vascular bed (4,5).

Diabetic insults at the beginning of gestation as in many pregestational diabetic pregnancies may have long-term effects on placental development. These adaptive responses of the placenta to the diabetic environment, such as buffering excess maternal glucose or increased vascular resistance, may help limit fetal growth within a normal range. If the duration or extent of the diabetic insult, including maternal hyperglycemia, hy-

perinsulinemia, or dyslipidemia, exceeds the placental capacity to mount adequate responses, then excessive fetal growth may ensue.

Diabetic insult at later stages in gestation, such as may occur in gestational diabetes, will foremost lead to short-term changes in a variety of molecules for key functions including gene expression (6).

The diabetic environment can be regarded as a network of substances (hormones, nutrients, cytokines) with altered concentrations. The current view is that the abnormal maternal metabolic environment may generate stimuli within the adipose tissue and the placental cells resulting in the increased production of inflammatory cytokines whose expression is minimal under normal pregnancy. One leading hypothesis is that changes in circulating TNF- α , adiponectin, leptin, and resistin link inflammation to metabolic changes by enhancing insulin resistance in the mother. Likewise, the fetal environment is also changed in diabetes, and elevated levels of insulin, leptin, and other cytokines have been well documented. This review will concentrate on insulin and cytokines as contributors to this network and potential regulators of placental function in GDM.

THE INSULIN RECEPTOR NETWORK

— Despite improvements in care over the past decades to achieve adequate maternal glucose control, fetal hyperinsulinemia is quite common in GDM pregnancies. Intensive research has tried to establish alterations in maternal-fetal transport of the most important insulin secretagogues, i.e., glucose and amino acids. Although the placental glucose transporter GLUT1 is subject to changes by the ambient level of glycemia, i.e., it can be downregulated and translocated into the cell interior by hyperglycemia in vitro (7–9), maternal-fetal glucose transport is lower than normal in diet-treated GDM subjects and near normal in insulin-treated GDM subjects. This will only have an effect if maternal glucose concentrations are high above postprandial glucose levels (10,11), because of the

From the ¹Clinic of Obstetrics and Gynecology, Medical University of Graz, Graz, Austria; and the ²Department of Reproductive Biology, Case Western Reserve University, MetroHealth Medical Center, Cleveland, Ohio.

Address correspondence and reprint requests to Gernot Desoye, PhD, Clinic of Obstetrics and Gynecology, Medical University of Graz, Auenbruggerplatz 14, A-8036 Graz, Austria. E-mail: gernot.desoye@meduni-graz.at.

Received for publication 28 March 2006 and accepted in revised form 14 July 2006.

This article is based on a presentation at a symposium. The symposium and the publication of this article were made possible by an unrestricted educational grant from LifeScan, Inc., a Johnson & Johnson company.

Abbreviations: GDM, gestational diabetes mellitus; IL, interleukin; TNF, tumor necrosis factor.

A table elsewhere in this issue shows conventional and Système International (SI) units and conversion factors for many substances.

DOI: 10.2337/dc07-s203

© 2007 by the American Diabetes Association.

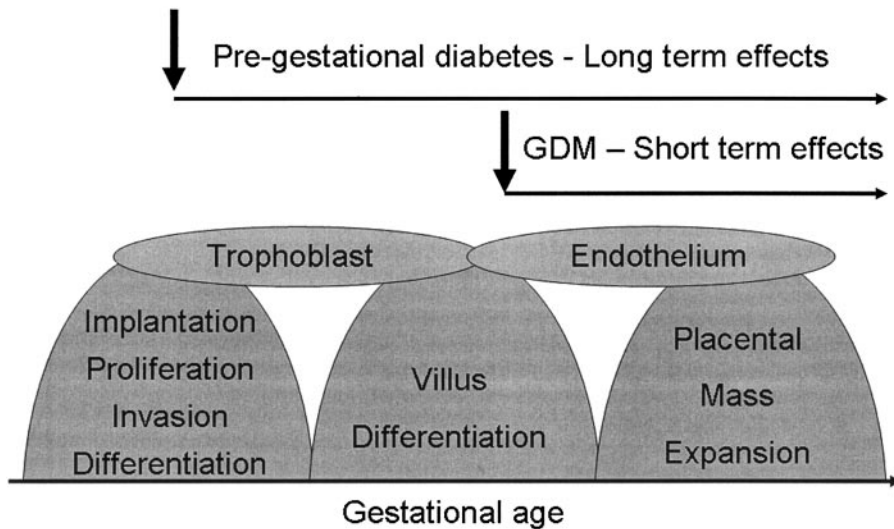


Figure 1—Placental growth and development are separated in three distinct, yet overlapping phases, which are predominantly associated with the trophoblast in the first half of gestation and with the endothelium in the second half of gestation. Any insult of the diabetic environment early in pregnancy will alter the placenta in a period critical for later development and, hence, have long-term effects unless counteracted by adaptive responses. Diabetic insults at later stages in gestation such as in GDM will only have short-term effects predominantly on placental function rather than its structure.

high capacity of the transplacental glucose transport system (12). Changes in placental amino acid transporters, if at all, are not associated with maternal diabetes, but rather with elevated fetal weight (13). However, because of the complex nature of amino acid transporter systems in the human placenta, any generalization has to be avoided, and perfusion studies across the intact organ are still pending. Yet, according to current knowledge, fetal hyperinsulinemia in diabetes is the result of the steeper transplacental glucose gradient associated with maternal hyperglycemia and is not accounted for by placental transporter changes.

The placenta expresses high amounts of insulin receptors relative to other tissues in the body. Their location undergoes developmental changes. At the beginning of gestation, they are located at the microvillous membrane of the syncytiotrophoblast, whereas at term, they are predominantly found at the endothelium (14,15). This strongly suggests a shift in control of insulin-dependent processes from the mother at the beginning of pregnancy to the fetus at the end. The spatio-temporal change in insulin receptor location is paralleled by a change in function, since insulin-induced gene expression is highest in first trimester trophoblast (16). At term, insulin has a stronger effect on the endothelium than on the trophoblast. This is important for diabetic preg-

nancies in general and for GDM in particular, because it can be assumed that the fetal hyperinsulinemia will affect the placental endothelium.

As a current concept (Fig. 2), at the beginning of pregnancy, maternal insu-

lin will regulate the placenta by interacting with the syncytiotrophoblast. This may lead to altered synthesis and secretion of hormones and cytokines that in turn will act back on the mother, thus forming a feedback loop. As gestation advances, the fetus, i.e., fetal insulin, will gradually take over control from the mother and directly or indirectly affect the endothelium or tissue-resident macrophages (Hofbauer cells). Whether one of the results will be the placental release of molecules or nutrients to the fetus as another feedback loop is currently under investigation. Changes in the number, affinity, and signaling properties of placental insulin receptors may confound this concept, but available information is scant. In diet-treated GDM, the amount of trophoblast insulin receptors is lower than in nondiabetic pregnancies, whereas in insulin-treated GDM, the placenta contains more insulin receptors (17). Whether endothelial insulin receptors are also altered is unknown.

Recent evidence demonstrated that insulin receptors at the different locations preferentially activate different intracellular signaling pathways. Whereas in the trophoblast compartment the mitogen-activated protein kinase pathway is predominantly activated, insulin stimulates

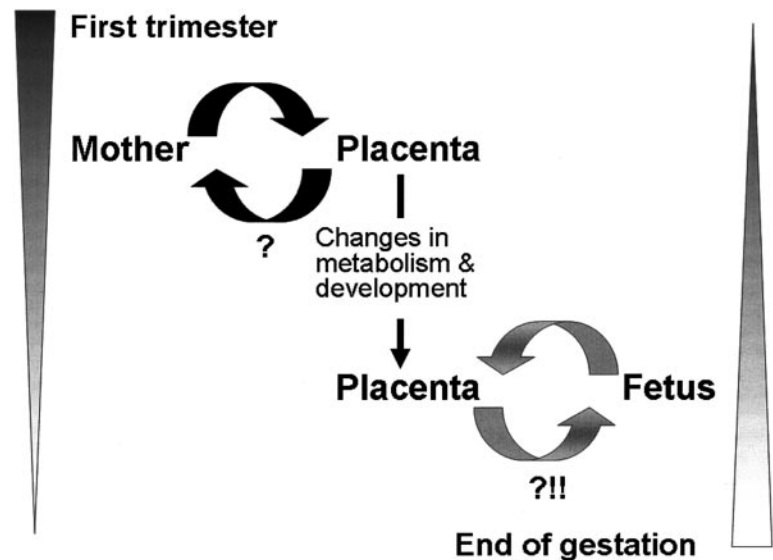


Figure 2—Generalized hypothetical model of the gestational shift in placental control from mother to fetus. The maternal changes in the diabetic environment will predominantly alter placental development at the beginning of gestation. Changes in placenta function may include altered synthesis and/or secretion of growth factors, hormones, and cytokines that will act back on the mother. As gestation advances, the placenta is beginning to be affected by the diabetic environment in the fetus. Whether this results in altered release of placental signals to the fetus is currently unknown. Taken from Hiden et al. (16) with kind permission of Springer Science and Business Media.

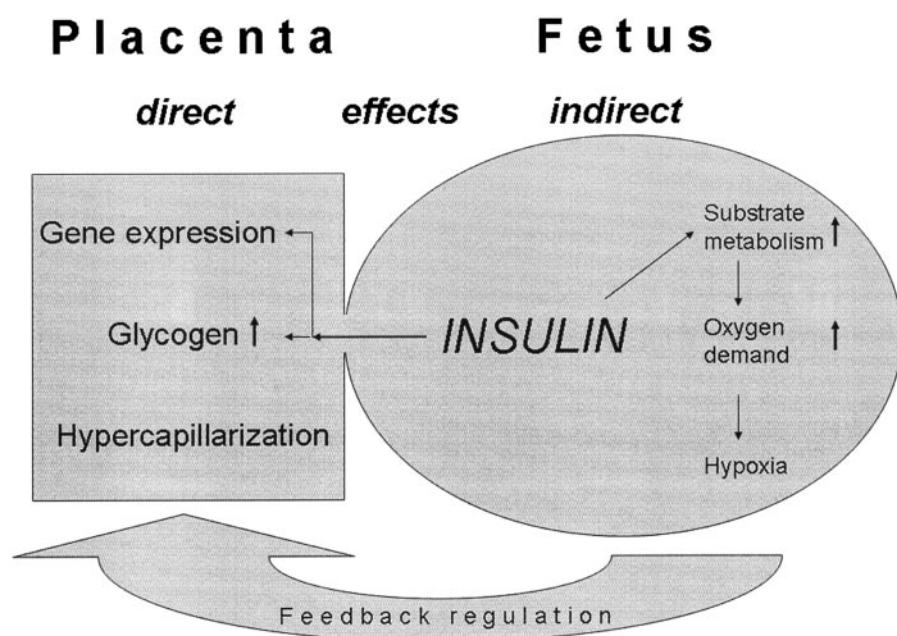


Figure 3—Fetal insulin will have direct effects on the placenta, such as inducing alterations in gene expression and stimulating endothelial glycogen synthesis. In addition, indirect effects mediated by fetal hypoxia on placental structure can be regarded as adaptive feedback responses to ensure adequate oxygen supply.

the protein kinase B/Akt pathway in the endothelium (18). This may indicate a mitogenic effect of insulin on the trophoblast, predominantly at the beginning of pregnancy, whereas fetal insulin will stimulate metabolic processes within the endothelium. In fact, *in vitro* studies confirmed the mitogenic potency of insulin in trophoblast models (19). This may explain the biphasic growth of the placenta and fetus at around mid-gestation in type 1 and experimental diabetes (20,21).

Fetal insulin in normal pregnancies and even more so in diabetic pregnancies with hyperinsulinemia may have direct and indirect effects on the placenta (Fig. 3). In addition to altering the expression of genes (16), it will stimulate endothelial glycogen synthesis (22). Although diet-treated GDM is associated with even lower than normal glycogen levels, elevation of placental glycogen levels in all other forms of diabetes has been well established (rev. in 3). In this respect, the placenta is a paradoxical tissue, since in the classic insulin target tissues, glycogen levels are reduced in diabetes because of the insulin resistance. Insulin does not change glycogen levels in the trophoblast. Glycogen increments in diabetes are found around the villous vessels and capillaries, suggesting that the glycogen stores are built up by glucose derived from the fetal circulation. In fact, not only

the ubiquitous glucose transporter GLUT1, but also the high affinity transporter GLUT3, is expressed in the placental endothelium, where it colocalizes with glycogenin, the protein precursor for glycogen synthesis (23). Increased glycogenin gene expression in placenta with GDM supports our hypothesis (6). In addition, the insulin-sensitive GLUT4 is located on the endothelium (24). Fetal glucose can be transported back into the placenta (25), and this back transport is increased in diabetic rats (26). The placenta is the only fetal tissue that can store excess fetal glucose. The buffer function of the placental endothelium will be stimulated by insulin, not only *in vitro*, as in human, but also *in vivo* in the rodent (27). This has led to a hypothesis proposing that some types of fetal macrosomia are the result of placental failure to store excess fetal glucose (28).

In addition to the direct effects of fetal insulin on the placenta that have been established so far, *i.e.*, gene expression and glycogen synthesis, indirect effects can also be seen.

Insulin stimulates fetal aerobic glucose metabolism and will hence increase oxygen demand of the fetus. If adequate supply is not available because of reduced oxygen delivery to the intervillous space as a result of the higher oxygen affinity of glycated hemoglobin (29), thickening of

the placental basement membrane (30,31), and reduced utero-placental or fetoplacental blood flow (32,33), fetal hypoxemia will ensue (34). Hypoxia is a potent stimulator of hypoxia-sensitive transcription factors such as the hypoxia inducible factor (HIF) and will therefore lead to the stimulated expression and synthesis of a variety of molecules, some of which are key players, especially in angiogenesis (35,36). Diabetic pregnancies are associated with elevated fetal levels of fibroblast growth factor-2 (37,38), which will stimulate placental angiogenesis and lead to the hypercapillarization seen in placentas of type 1 diabetic pregnancies. Reports in GDM are conflicting (39–41). Some, but not all, studies found increased longitudinal vascular growth and enhanced branching angiogenesis, which may reflect different time points of GDM onset in gestation either within or after the critical developmental stages of vasculogenesis and angiogenesis (42).

One of the characteristic features of a placenta in GDM is its increased weight, which is accompanied by enlarged surface areas of exchange on the maternal (syncytiotrophoblast) and fetal (endothelium) side (3). Teleologically, it may appear paradoxical that in a situation of maternal nutritional oversupply, the placenta increases its surface, thus potentially contributing to enhanced maternal fetal transport, but this reflects the prime importance of adequate oxygen supply to the fetus and the effect of excess growth factors such as insulin, which collectively dictate some of the placental changes even at the cost of adverse side effects.

THE CYTOKINE NETWORK—Cytokines are mainly but not exclusively produced by cells of the immune system, NK cells, and macrophages in response to an external stimulus such as stress, injury, and infection. Adipose tissue represents an additional source of cytokines, making possible a functional cooperation between the immune system and metabolism (43,44). The placenta also synthesizes a variety of cytokines, adding an additional level of complexity to the immune-metabolic network existing in pregnant individuals. This raises the possibility that placenta cytokine production contributes to a low-grade inflammation developing during the third trimester of pregnancy (45). In pregnancy complicated with GDM or obesity, there is a further dysregulation of metabolic, vascular, and inflammatory pathways supported by

increased circulating concentration of inflammatory molecules (46,47). Studies of transcriptional profiling have shown that adipose tissue and the placenta express a common repertoire of cytokines and inflammation-related genes, which become overexpressed in a diabetic environment (48). The current view is that maternal adipose tissue as well as the placenta contribute to the inflammatory situation by releasing common molecules, the relative contribution of which has yet to be determined.

The placenta is a source of cytokines: placental influence

The concept of the endocrine function of the human placenta as being restricted to the production of gestational hormones is rapidly being challenged. The human placenta has been found to express virtually all known cytokines (49).

In addition to immune-related cytokines and growth factors, the placenta synthesizes resistin and leptin, two adipose tissue-specific proteins (adipokines) implicated in the regulation of insulin action (50). Whether the placenta at term is able to synthesize the insulin sensitizer, adiponectin, is still being debated (Fig. 4) (51). Cytokines are produced by three different placental cell types: the Hofbauer cells, the trophoblast cells, and cells of the vascular endothelium, albeit with cell type-specific cytokine patterns. For example, TNF- α is produced by the Hofbauer cells (52,53), whereas the syncytiotrophoblast is the major site of leptin synthesis, and interleukin (IL)-6 expression is found in both trophoblast and endothelial cells (54–56). Studies of the pattern of production and release of placental cytokines into the systemic circulation have provided valuable information relating to their mechanism and site of action. Leptin and IL-6 are released into the fetal and maternal systemic circulation. Thus, they can exert endocrine action by acting at sites remote from the production site (57–59). In contrast to leptin, TNF- α is poorly released from the placenta (Table 1) and hence is more likely to exert local paracrine effects. There is an overproduction of placenta leptin and TNF- α in type 1 diabetes and GDM (60; Fig. 5). In GDM, the overexpression of placenta TNF- α is associated with increased fetal adiposity (6). The stimuli and mechanisms responsible for increased leptin and TNF- α gene expression and production are not known at present; however, the consequences of

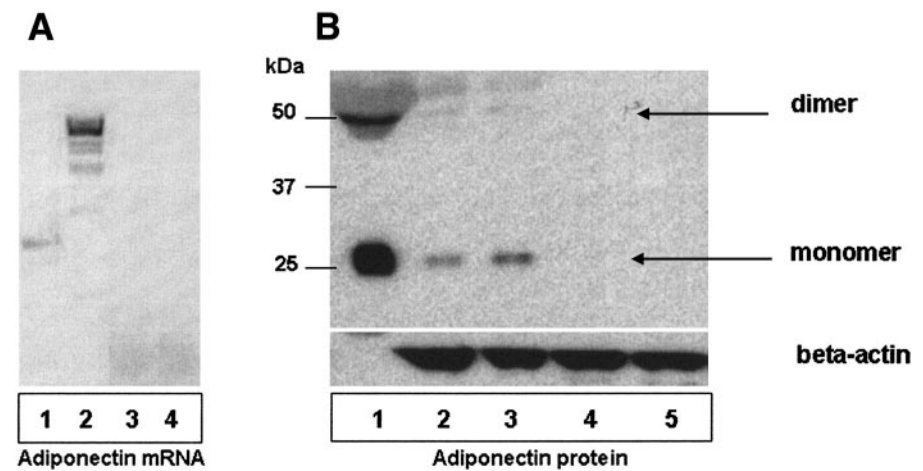


Figure 4—Adiponectin expression. A: Adiponectin mRNA expression measured by real-time PCR (amplification run of 40 cycles) is detected in maternal white adipose tissue (lane 1) but not in human placenta at 39 weeks of gestation (lanes 3 and 4). B: Immunodetection of adiponectin protein. Signals for monomeric (25 kDa) and dimeric (50 kDa) adiponectin complexes were detected in maternal serum (1 μ l) after electrophoresis under reducing conditions (lane 1), in white adipose tissue (50 μ g total protein, lane 2), and in crude placenta tissue (50 μ g total protein, lane 3). Once the placenta is being washed out from intervillous blood, the adiponectin signals are no longer detectable (lanes 4 and 5). This indicates that adiponectin protein expression detected in term placenta is accounted for by the systemic blood trapped within the intervillous blood space.

their overproduction are just beginning to be unraveled (61). Both cytokines activate phospholipase A2, a family of lipolytic enzymes that generate eicosanoid precursors such as docosahexaenoic acid, an essential ω -3 polyunsaturated fatty acid. Recent evidence demonstrated an accumulation of ω -3 fatty acids in placenta of offspring of GDM mothers with increased adiposity at birth (62).

This may be one potential mechanism linking local placental inflammatory responses with increased lipid substrate availability for fetal fat deposition, in addition to increased maternal supply. TNF- α may also participate in the endocrine mechanism of pregnancy-induced insulin resistance by adding a placental component to the insulin resistance developing in the mother. The TNF- α induction of IRS-1 serine phosphorylation links inflammation to defective insulin action in pregnancy (58,63). In GDM, the activation of the proximal cytoplasmic proteins of TNF- α signaling such as TNFR1 associated death domain (TRADD) protein, TNFR2-associated death domain (TRAF2) protein, and Fas-associated death domain (FADD) protein is an indication of the recruitment of TNF- α R1 and R2 receptors (6). This raises the possibility that placenta TNF- α downregulates insulin action through serine phosphorylation of placental insulin re-

ceptors, as shown in skeletal muscle of women with GDM (64).

The placenta is a target of cytokines: maternal and fetal influences

The placenta is at the same time source and target for cytokines. The type and the location of the cytokine receptors present on the placental cells will determine whether signals are generated by placentally (internal), maternally (presumably adipose-derived), or fetally derived cytokines. This emphasizes the possibility of an external control of placental function that can become dysregulated when the cytokine levels are augmented, such as in GDM or obesity (45,65).

One leading hypothesis is that increased TNF- α , leptin, and resistin contribute to enhancing insulin resistance in the GDM mother (58). In addition, adiponectin may be implicated in the loss of insulin sensitivity with advancing gestation in normal pregnancy and in pregnancy with GDM through a decrease in maternal concentrations (66–68). It is worthwhile to emphasize here that, whereas it will be difficult to dissect out the relative contribution of the placental and maternal tissues for regulation through TNF- α , leptin, or resistin, the influence of adiponectin will be exclusively of maternal origin because of the absence of ligand but expression of adiponectin receptors in the placenta (Fig. 4; 69,70).

Table 1—Leptin and TNF- α release by human term placenta perfused in vitro

	Placental tissue accumulation (ng/min)	Release into the fetal perfusate (ng/min)	Release into the maternal perfusate (ng/min)	Placenta production (ng \cdot min ⁻¹ \cdot g ⁻¹)
Leptin	1.52 \pm 0.75	0.13 \pm 0.04	1.99 \pm 0.73	0.036 \pm 0.15
TNF- α	-2.30 \pm 1.67	0.015 \pm 0.004	0.49 \pm 0.25	0.12 \pm 0.05

Placentas from uncomplicated term pregnancy (39–40 weeks) were analyzed with a dual cotyledon in vitro perfusion technique. Cytokine concentrations were measured by enzyme-linked immunosorbent assay from three distinct sources: placental tissue, maternal perfusate, and fetal perfusate. Tissue accumulation is calculated over the 60 min of perfusion time. The negative number for TNF- α indicates that TNF- α accumulates in the tissue during the time of perfusion besides being released in both maternal and fetal circulations. The positive value for leptin indicates that leptin is washed out from the tissue during the time of perfusion. Placental production is calculated as total release (M + F) minus tissue accumulation. Adapted from Lepercq et al. (57) and Kirwan et al. (58).

Similar to other peptide hormones such as insulin or glucagon, there is minimal trans-placental transfer of cytokines from mother to fetus (71,72). Hence, the origin of the cytokines found in the fetal circulation can be twofold, either released from the placenta or synthesized within the fetus. There is a critical lack of information regarding most fetal cytokines and adipokines. There is now clear evidence that placental leptin is poorly released into the fetal circulation (Table 1) and that leptin synthesized by fetal adipose tissue can be taken as a marker of fetal adiposity (61,73). Some of the stimuli that disturb placental metabolism may also be conveyed through the vascular endothelium

as oxidative stress, endothelial injury, etc., thus bringing into the picture a control from the fetus, through alterations induced by circulating fetal TNF- α , leptin, and IL-1 and IL-6 (74).

Thus, the maternal-fetal control of the placenta is a cumulative result of cell cooperation that may propagate a vicious cycle for enhancement of cytokine production, which may eventually have an impact on insulin action in the fetoplacental unit and possibly obesity in utero. The discovery that some adipokines are produced by the placenta opens novel perspectives for understanding the specificity of pregnancy-induced insulin resistance. It also emphasizes the impor-

tance of functional interplays between the placenta and maternal white adipose tissue in GDM. The signals that regulate the secretion of these molecules are far from clear. Further studies in this area may provide a clue for understanding the inflammatory processes in GDM and obesity and potentially in utero programming of obesity.

Acknowledgments—This work was supported in part by grants from the Jubilee Fund; Austrian National Bank, Vienna, Austria (7620, 8777, 8339, 10053, and 10896); the Austrian Science Foundation, Vienna (10900 and 13321); Institut National de la Santé et de la Recherche Médicale (INSERM); Alfidiam-Roche Pharma; the American Diabetes Association (1-04-TLG-01); and the Diabetes Association of Greater Cleveland.

References

- Desoye G, Hauguel de Mouzon S, Shafir E: The placenta in diabetic pregnancy. In *Textbook of Diabetes and Pregnancy*. Hod M, Jovanovic L, DiRenzo G-C, deLeiva A, Langer O, Eds. London, Dunitz M, 2003, p. 126–147
- Desoye G, Myatt L: The placenta. In *Diabetes in Women: Adolescence, Pregnancy, and Menopause*. 3rd ed. Reece EA, Coustan DR, Gabbe SG, Eds. Philadelphia, Lippincott Williams & Wilkins, 2004, p. 147–157
- Desoye G, Shafir E: The human placenta in diabetic pregnancy. *Diabetes Reviews* 4:70–89, 1996
- Kaufmann P, Mayhew TM, Charnock-Jones DS: Aspects of human fetoplacental vasculogenesis and angiogenesis. II. Changes during normal pregnancy. *Placenta* 25:114–126, 2004
- Mayhew TM: Fetoplacental angiogenesis during gestation is biphasic, longitudinal and occurs by proliferation and remodeling of vascular endothelial cells. *Placenta* 23:742–750, 2002
- Radaelli T, Varastehpour A, Catalano P, Hauguel-de Mouzon S: Gestational diabetes induces placental genes for chronic

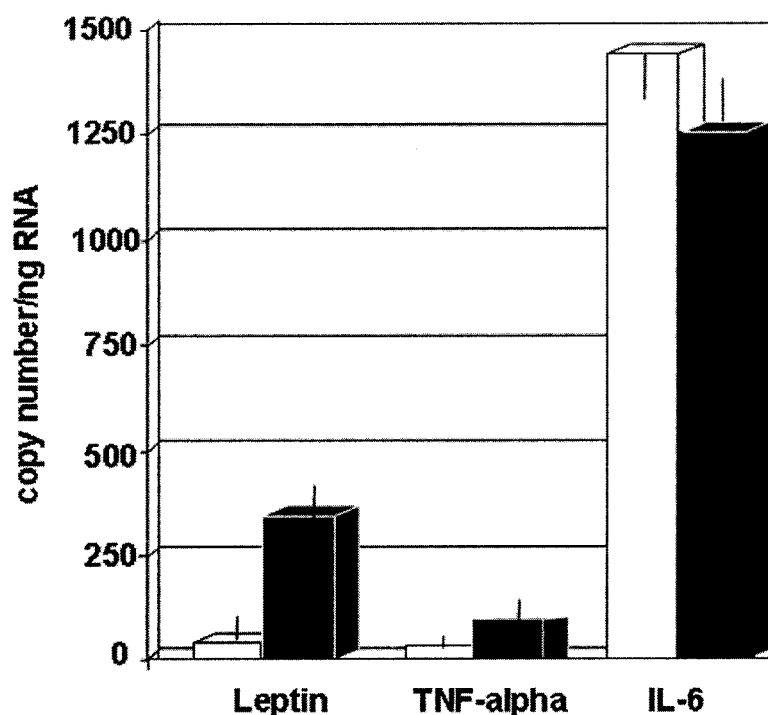


Figure 5—Expression of leptin, TNF- α , and IL-6 in term placenta (38–39 weeks). Absolute mRNA levels for leptin, TNF- α , and IL-6 were measured by real-time RT-PCR using actin as the normalization control. □, Control subjects, n = 8; ■, GDM patients, n = 7. Data are expressed as means \pm SE. The statistical difference has been calculated using a nonpaired Student's t test. *P value <0.05 was considered significant.

- stress and inflammatory pathways. *Diabetes* 52:2951–2958, 2003
7. Hahn T, Barth S, Weiss U, Mosgoeller W, Desoye G: Sustained hyperglycemia in vitro down-regulates the GLUT1 glucose transport system of cultured human term placental trophoblast: a mechanism to protect fetal development? *FASEB J* 12:1221–1231, 1998
 8. Hahn T, Hahn D, Blaschitz A, Korgun ET, Desoye G, Dohr G: Hyperglycaemia-induced subcellular redistribution of GLUT1 glucose transporters in cultured human term placental trophoblast cells. *Diabetologia* 43:173–180, 2000
 9. Illsley NP, Sellers MC, Wright RL: Glycaemic regulation of glucose transporter expression and activity in the human placenta. *Placenta* 19:517–524, 1998
 10. Osmond DT, King RG, Brennecke SP, Gude NM: Placental glucose transport and utilisation is altered at term in insulin-treated, gestational-diabetic patients. *Diabetologia* 44:1133–1139, 2001
 11. Osmond DT, Nolan CJ, King RG, Brennecke SP, Gude NM: Effects of gestational diabetes on human placental glucose uptake, transfer, and utilisation. *Diabetologia* 43:576–582, 2000
 12. Hauguel S, Desmaizieres V, Challier JC: Glucose uptake, utilization, and transfer by the human placenta as functions of maternal glucose concentration. *Pediatr Res* 20:269–273, 1986
 13. Kuruvilla AG, D'Souza SW, Glazier JD, Mahendran D, Maresh MJ, Sibley CP: Altered activity of the system A amino acid transporter in microvillous membrane vesicles from placentas of macrosomic babies born to diabetic women. *J Clin Invest* 94:689–695, 1994
 14. Desoye G, Hartmann M, Blaschitz A, Dohr G, Hahn T, Kohnen G, Kaufmann P: Insulin receptors in syncytiotrophoblast and fetal endothelium of human placenta: immunohistochemical evidence for developmental changes in distribution pattern. *Histochemistry* 101:277–285, 1994
 15. Desoye G, Hartmann M, Jones CJ, Wolf HJ, Kohnen G, Kosanke G, Kaufmann P: Location of insulin receptors in the placenta and its progenitor tissues. *Microsc Res Tech* 38:63–75, 1997
 16. Hidden U, Maier A, Bilban M, Ghaffari-Tabrizi N, Wadsack C, Lang I, Dohr G, Desoye G: Insulin control of placental gene expression shifts from mother to foetus over the course of pregnancy. *Diabetologia* 49:123–131, 2006
 17. Desoye G, Hofmann HH, Weiss PA: Insulin binding to trophoblast plasma membranes and placental glycogen content in well-controlled gestational diabetic women treated with diet or insulin, in well-controlled overt diabetic patients and in healthy control subjects. *Diabetologia* 35:45–55, 1992
 18. Hidden U, Maier A, Ghaffari-Tabrizi N, Wadsack C, Desoye G: Differential insulin receptor expression causes differential insulin signalling in the two interfaces of the human placenta (Abstract). *Placenta* 26:A.9, 2005
 19. Mandl M, Haas J, Bischof P, Nohammer G, Desoye G: Serum-dependent effects of IGF-I and insulin on proliferation and invasion of human first trimester trophoblast cell models. *Histochem Cell Biol* 117:391–399, 2002
 20. Siddiqi TA, Miodovnik M, Mimouni F, Clark EA, Khoury JC, Tsang RC: Biphasic intrauterine growth in insulin-dependent diabetic pregnancies. *J Am Coll Nutr* 8:225–234, 1989
 21. Robinson J, Canavan JP, el Haj AJ, Goldspink DF: Maternal diabetes in rats. I. Effects on placental growth and protein turnover. *Diabetes* 37:1665–1670, 1988
 22. Desoye G, Korgun ET, Ghaffari-Tabrizi N, Cetin I, Hahn T: Selective upregulation of placental glycogenin-2 in gestational diabetes is independent of hyperglycemia or hyperinsulinemia. *J Soc Gyn Invest* 11(Suppl.):299A, 2004
 23. Hahn D, Blaschitz A, Korgun ET, Lang I, Desoye G, Skofitsch G, Dohr G: From maternal glucose to fetal glycogen: expression of key regulators in the human placenta. *Mol Hum Reprod* 7:1173–1178, 2001
 24. Xing AY, Challier JC, Lepercq J, Cauzac M, Charron MJ, Girard J, Hauguel-de Mouzon S: Unexpected expression of glucose transporter 4 in villous stromal cells of human placenta. *J Clin Endocrinol Metab* 83:4097–4101, 1998
 25. Schneider H, Reiber W, Sager R, Malek A: Asymmetrical transport of glucose across the in vitro perfused human placenta. *Placenta* 24:27–33, 2003
 26. Thomas CR, Eriksson GL, Eriksson UJ: Effects of maternal diabetes on placental transfer of glucose in rats. *Diabetes* 39:276–282, 1990
 27. Goltzsch W, Bittner R, Bohme HJ, Hofmann E: Effect of prenatal insulin and glucagon injection on the glycogen content of rat placenta and fetal liver. *Biomed Biochim Acta* 46:619–622, 1987
 28. Desoye G, Korgun ET, Ghaffari-Tabrizi N, Hahn T: Is fetal macrosomia in adequately controlled diabetic women the result of a placental defect? A hypothesis. *J Matern Fetal Neonatal Med* 11:258–261, 2002
 29. Story CJ, Roberts AP, Ryall RG: Borderline maintenance of erythrocyte 2,3-diphosphoglycerate concentrations in normoxic type 1 (insulin dependent) diabetic subjects. *Clin Sci (Lond)* 70:127–129, 1986
 30. al-Okail MS, al-Attas OS: Histological changes in placental syncytiotrophoblasts of poorly controlled gestational diabetic patients. *Endocr J* 41:355–360, 1994
 31. Yang WC, Su TH, Yang YC, Chang SC, Chen CY, Chen CP: Altered perlecan expression in placental development and gestational diabetes mellitus. *Placenta* 26:780–788, 2005
 32. Fadda GM, D'Antona D, Ambrosini G, Cherchi PL, Nardelli GB, Capobianco G, Dessole S: Placental and fetal pulsatility indices in gestational diabetes mellitus. *J Reprod Med* 46:365–370, 2001
 33. Saldeen P, Olofsson P, Laurini RN: Structural, functional and circulatory placental changes associated with impaired glucose metabolism. *Eur J Obstet Gynecol Reprod Biol* 105:136–142, 2002
 34. Teramo KA, Widness JA, Clemons GK, Voutilainen P, McKinlay S, Schwartz R: Amniotic fluid erythropoietin correlates with umbilical plasma erythropoietin in normal and abnormal pregnancy. *Obstet Gynecol* 69:710–716, 1987
 35. Grosfeld A, Turban S, Andre J, Cauzac M, Challier JC, Hauguel-de Mouzon S, Guerre-Millo M: Transcriptional effect of hypoxia on placental leptin. *FEBS Lett* 502:122–126, 2001
 36. Lolmede K, Durand de Saint Front V, Galitzky J, Lafontan M, Bouloumie A: Effects of hypoxia on the expression of proangiogenic factors in differentiated 3T3–F442A adipocytes. *Int J Obes Relat Metab Disord* 27:1187–1195, 2003
 37. Arany E, Hill DJ: Fibroblast growth factor-2 and fibroblast growth factor receptor-1 mRNA expression and peptide localization in placenta from normal and diabetic pregnancies. *Placenta* 19:133–142, 1998
 38. Hill DJ, Tevaarwerk GJ, Caddell C, Arany E, Kilkenny D, Gregory M: Fibroblast growth factor 2 is elevated in term maternal and cord serum and amniotic fluid in pregnancies complicated by diabetes: relationship to fetal and placental size. *J Clin Endocrinol Metab* 80:2626–2632, 1995
 39. Teasdale F: Histomorphometry of the placenta of the diabetic women: class A diabetes mellitus. *Placenta* 2:241–251, 1981
 40. Babawale MO, Lovat S, Mayhew TM, Lammiman MJ, James DK, Leach L: Effects of gestational diabetes on junctional adhesion molecules in human term placental vasculature. *Diabetologia* 43:1185–1196, 2000
 41. Jirkovska M, Kubinova L, Janacek J, Moravcova M, Krejci V, Karen P: Topological properties and spatial organization of villous capillaries in normal and diabetic placentas. *J Vasc Res* 39:268–278, 2002
 42. Leach L, Mayhew TM: Vasculogenesis and angiogenesis in the diabetic placenta. In *Diabetology of Pregnancy*. Djelmis J, Desoye G, Ivanisevic M, Eds. Basel, Karger, 2005, p. 110–126
 43. Rajala MW, Scherer PE: Minireview: the adipocyte: at the crossroads of energy homeostasis, inflammation, and atherosclerosis. *Endocrinology* 144:3765–3773, 2003
 44. Guerre-Millo M: Adipose tissue and adipokines: for better or worse. *Diabete*

- Metab* 30:13–19, 2004
45. Radaelli T, Uvena-Celebrezze J, Minium J, Huston-Presley L, Catalano P, Hauguel de Mouzon S: Maternal interleukin-6, a marker of fetal growth and adiposity. *J Soc Gynecol Invest* 13:53–57, 2005
 46. Retnakaran R, Hanley AJ, Raif N, Connelly PW, Sermer M, Zinman B: C-reactive protein and gestational diabetes: the central role of maternal obesity. *J Clin Endocrinol Metab* 88:3507–3512, 2003
 47. Ramsay JE, Ferrell WR, Crawford L, Wallace AM, Greer IA, Sattar N: Maternal obesity is associated with dysregulation of metabolic, vascular, and inflammatory pathways. *J Clin Endocrinol Metab* 87:4231–4237, 2002
 48. Hauguel de-Mouzon S, Guerre-Millo M: The placenta cytokine network and inflammatory signals. *Placenta* 27:794–798, 2005
 49. Bowen JM, Chamley L, Mitchell MD, Keelan JA: Cytokines of the placenta and extra-placental membranes: biosynthesis, secretion and roles in establishment of pregnancy in women. *Placenta* 23:239–256, 2002
 50. Hoegh M, Minium J, Bernard A, Varastehpour A, Catalano P, Hauguel de Mouzon S: Placental contribution to maternal adiponectin and resistin in late pregnancy. *J Soc Gynecol Invest* 12 (Suppl.):229A, 2005
 51. Chen J, Tan B, Karteris E, Zervou S, Digby J, Hillhouse EW, Vatish M, Randeve HS: Secretion of adiponectin by human placenta: differential modulation of adiponectin and its receptors by cytokines. *Diabetologia* 49:1292–1302, 2006
 52. Chen HL, Yang YP, Hu XL, Yelavarthi KK, Fishback JL, Hunt JS: Tumor necrosis factor alpha mRNA and protein are present in human placental and uterine cells at early and late stages of gestation. *Am J Pathol* 139:327–335, 1991
 53. Phillips TA, Ni J, Hunt JS: Death-inducing tumour necrosis factor (TNF) superfamily ligands and receptors are transcribed in human placenta, cytotrophoblasts, placental macrophages and placental cell lines. *Placenta* 22:663–672, 2001
 54. Challier J, Galtier M, Bintein T, Cortez A, Lepercq J, Hauguel-de Mouzon S: Placental leptin receptor isoforms in normal and pathological pregnancies. *Placenta* 24:92–99, 2003
 55. Kauma SW, Herman K, Wang Y, Walsh SW: Differential mRNA expression and production of interleukin-6 in placental trophoblast and villous core compartments. *Am J Reprod Immunol* 30:131–135, 1993
 56. Keelan JA, Marvin KW, Sato TA, Coleman M, McCowan LM, Mitchell MD: Cytokine abundance in placental tissues: evidence of inflammatory activation in gestational membranes with term and preterm parturition. *Am J Obstet Gynecol* 181:1530–1536, 1999
 57. Lepercq J, Challier JC, Guerre-Millo M, Cauzac M, Vidal H, Hauguel-de Mouzon S: Prenatal leptin production: evidence that fetal adipose tissue produces leptin. *J Clin Endocrinol Metab* 86:2409–2413, 2001
 58. Kirwan JP, Hauguel-De Mouzon S, Lepercq J, Challier JC, Huston-Presley L, Friedman JE, Kalhan SC, Catalano PM: TNF-alpha is a predictor of insulin resistance in human pregnancy. *Diabetes* 51:2207–2213, 2002
 59. Malek A, Sager R, Schneider H: Effect of hypoxia, oxidative stress and lipopolysaccharides on the release of prostaglandins and cytokines from human term placental explants. *Placenta* 22 (Suppl. A):S45–S50, 2001
 60. Lepercq J, Cauzac M, Lahlou N, Timsit J, Girard J, Auwerx J, Hauguel-de Mouzon S: Overexpression of placental leptin in diabetic pregnancy: a critical role for insulin. *Diabetes* 47:847–850, 1998
 61. Hauguel-de Mouzon S, Lepercq J, Catalano P: The known and unknown of leptin in pregnancy. *Am J Obstet Gynecol* 194:1537–1545, 2006
 62. Varastehpour A, Radaelli T, Minium J, Ortega H, Herrera E, Catalano P, Hauguel-de Mouzon S: Activation of phospholipase A2 is associated with generation of placental lipid signals and fetal obesity. *J Clin Endocrinol Metab* 91:248–255, 2005
 63. Catalano PM, Nizielski SE, Shao J, Preston L, Qiao L, Friedman JE: Downregulated IRS-1 and PPARgamma in obese women with gestational diabetes: relationship to FFA during pregnancy. *Am J Physiol Endocrinol Metab* 282:E522–E533, 2002
 64. Barbour LA, McCurdy CE, Hernandez TL, Kirwan JP, Catalano PM, Friedman JE: Cellular mechanisms for insulin resistance in normal pregnancy and gestational diabetes. *Diabetes Care* 30 (Suppl. 2):S112–S119, 2007
 65. Wolf M, Sauk J, Shah A, Vossen Smirnakis K, Jimenez-Kimble R, Ecker JL, Thadhani R: Inflammation and glucose intolerance: a prospective study of gestational diabetes mellitus. *Diabetes Care* 27:21–27, 2004
 66. Catalano PM, Hoegh M, Minium J, Huston-Presley L, Bernard S, Kalhan S, Hauguel-De Mouzon S: Adiponectin in human pregnancy: implications for regulation of glucose and lipid metabolism. *Diabetologia* 49:1677–1685, 2006
 67. Ranheim T, Haugen F, Staff AC, Braekke K, Harsem NK, Drevon CA: Adiponectin is reduced in gestational diabetes mellitus in normal weight women. *Acta Obstet Gynecol Scand* 83:341–347, 2004
 68. Kinalski M, Telejko B, Kuzmicki M, Kretowski A, Kinalska I: Tumor necrosis factor alpha system and plasma adiponectin concentration in women with gestational diabetes. *Horm Metab Res* 37:450–454, 2005
 69. Caminos JE, Nogueiras R, Gallego R, Bravo S, Tovar S, Garcia-Caballero T, Casanueva FF, Dieguez C: Expression and regulation of adiponectin and receptor in human and rat placenta. *J Clin Endocrinol Metab* 90:4276–4286, 2005
 70. Lappas M, Permezel M, Rice GE: Leptin and adiponectin stimulate the release of proinflammatory cytokines and prostaglandins from human placenta and maternal adipose tissue via nuclear factor-kappaB, peroxisomal proliferator-activated receptor-gamma and extracellularly regulated kinase 1/2. *Endocrinology* 146:3334–3342, 2005
 71. Zaretsky MV, Alexander JM, Byrd W, Bawdon RE: Transfer of inflammatory cytokines across the placenta. *Obstet Gynecol* 103:546–550, 2004
 72. Aaltonen R, Heikkinen T, Hakala K, Laine K, Alanen A: Transfer of proinflammatory cytokines across term placenta. *Obstet Gynecol* 106:802–807, 2005
 73. Wolf HJ, Ebenbichler CF, Huter O, Bodner J, Lechleitner M, Foger B, Patsch JR, Desoye G: Fetal leptin and insulin levels only correlate in large-for-gestational-age infants. *Eur J Endocrinol* 142:623–629, 2000
 74. Bouloumie A, Drexler HC, Lafontan M, Busse R: Leptin, the product of Ob gene, promotes angiogenesis. *Circ Res* 83:1059–1066, 1998