

## Mast cell leukemia

Sophie Georjin-Lavialle,<sup>1,3</sup> Ludovic Lhermitte,<sup>2,4</sup> Patrice Dubreuil,<sup>1,5</sup> Marie-Olivia Chandesris,<sup>1,6</sup> Olivier Hermine,<sup>1,4,6,7</sup> and Gandhi Damaj<sup>1,4,8</sup>

<sup>1</sup>Centre de Référence des Mastocytoses, Faculté de Médecine et Assistance Publique–Hôpitaux de Paris (AP-HP) Necker-Enfants Malades, Paris, France; <sup>2</sup>Laboratoire d'Hématologie Biologique, Hôpital Necker-Enfants Malades, AP-HP, Paris, France; <sup>3</sup>Service de Médecine Interne, Hôpital Tenon, AP-HP, Paris, France; <sup>4</sup>UMR CNRS 8147, Université Paris Descartes, Paris Sorbonne Cité, Faculté de Médecine, Paris, France; <sup>5</sup>Inserm, U1068, Centre de Recherche en Cancérologie de Marseille (CRCM), Signaling, Hematopoiesis and Mechanism of Oncogenesis, Institut Paoli-Calmettes, Marseille; Aix-Marseille Université, CNRS, UMR7258, Marseille, France; <sup>6</sup>Service d'Hématologie Adultes, Université Paris Descartes, Paris Sorbonne Cité, Faculté de Médecine et AP-HP Necker-Enfants Malades, Paris, France; <sup>7</sup>Institut Imagine, AP-HP Necker-Enfants Malades, Paris, France; and <sup>8</sup>Service d'Hématologie, Centre Hospitalier Universitaire, Hôpital Sud, Amiens, France

**Mast cell leukemia (MCL) is a very rare form of aggressive systemic mastocytosis accounting for < 1% of all mastocytosis. It may appear de novo or secondary to previous mastocytosis and shares more clinicopathologic aspects with systemic mastocytosis than with acute myeloid leukemia. Symptoms of mast cell activation—**involvement of the liver,

**spleen, peritoneum, bones, and marrow—are frequent. Diagnosis is based on the presence of  $\geq 20\%$  atypical mast cells in the marrow or  $\geq 10\%$  in the blood; however, an aleukemic variant is frequently encountered in which the number of circulating mast cells is < 10%. The common phenotypic features of pathologic mast cells encountered in most forms of masto-**

**cytosis are unreliable in MCL. Unexpectedly, non-*KIT* D816V mutations are frequent and therefore, complete gene sequencing is necessary. Therapy usually fails and the median survival time is < 6 months. The role of combination therapies and bone marrow transplantation needs further investigation. (*Blood*. 2013;121(8):1285-1295)**

### Introduction

Mastocytosis is a heterogeneous group of disorders characterized by the abnormal growth and accumulation of mast cells (MCs) in one or more organ systems.<sup>1,2</sup> Diagnostic criteria and classification were recently updated by the WHO.<sup>1</sup> This classification defines 7 disease variants (Table 1): cutaneous mastocytosis, indolent systemic mastocytosis (ISM), systemic mastocytosis (SM) with an associated clonal hematologic non-MC-lineage disease (SM-AHNMD), aggressive SM (ASM), MC leukemia (MCL), MC sarcoma, and extracutaneous mastocytoma. SM is defined by major and minor criteria. The diagnosis is established if at least one major and one minor or at least 3 minor criteria are present (Table 2). SM is subclassified according to MC burden, involvement of non-MC lineages, and aggressiveness of the disease (C findings).<sup>1,3</sup> The clinical course is variable, ranging from asymptomatic with normal life expectancy to highly aggressive with poor prognosis.<sup>4,6</sup>

MCL is a very rare form of ASM, involving < 0.5% of all mastocytosis patients in the French Reference Center for Mastocytosis (CEREMAST). It is characterized by the leukemic spread of MCs, with frequent and multiple organ involvement such as the liver, peritoneum, spleen, bone, and marrow. MCL shares more clinical and biologic aspects with ASM than with acute myeloid leukemia (AML).<sup>7</sup> MCL diagnosis requires the presence of SM criteria with additional features including leukemic infiltration of bone marrow (BM) and/or blood by at least 20% high-grade MC<sup>1</sup> as well as the infiltration of extracutaneous organs by neoplastic MC. The threshold > 20% of bone marrow mast cells (BMMCs) should be confirmed by cytologic analysis of BM smears thus avoiding false-positive diagnosis if the count is done on BM biopsies. “An aleukemic” form of MCL is frequent. This diagnosis is made if the number of circulating MCs is < 10%.<sup>1</sup> Thus, a

cytologic analysis of aspiration smear preparations, from both blood and marrow, is required to make a MCL diagnosis.<sup>7</sup>

MCL can occur de novo or secondary to SM. Lim et al, in a large cohort of 342 patients with adult SM,<sup>6</sup> reported an overall risk of transformation of 6%, in the majority of cases to AML (86%), or to MCL (13%). Transformation occurred most often from SM-AHNMD or ASM and was correlated to advanced age, history of weight loss, anemia, thrombocytopenia, hypoalbuminemia, and an excess of BM blasts.

A comprehensive immunophenotyping study has shown that an immature BMMC phenotype (CD25<sup>+</sup>/FceR<sup>+lo</sup>/FSC<sup>lo</sup>/SSC<sup>lo</sup>/CD45<sup>lo</sup>) in the absence of coexisting normal MCs in the bone marrow, is correlated with multilineage hematopoietic involvement by the *KIT* D816V mutation which might be associated with higher risk of progression to a more aggressive disease.<sup>8</sup> Nevertheless, the prognostic significance of these observations for predicting clinical outcome in patients with SM requires further investigation. Therapeutic options are limited and the disease is most often fatal within a few months.<sup>6,7,9</sup>

We performed a literature search using the PubMed database for all proven MCL cases, according to the WHO criteria,<sup>1</sup> and propose here a review based on all published MCL cases since 1950 found, with 4 additional personal unpublished cases. Therefore, this review includes 51 MCL cases; in 41 cases, we had extensive clinical and biologic data which allowed us to analyze both de novo MCL (n = 30) as well as secondary MCL (n = 11) including a few cases with a previous history of pediatric mastocytosis (n = 4).

### Epidemiology

MCL was described as early as 1906 by Joachim.<sup>10</sup> It is a very rare subcategory of SM accounting for approximately 1% of American

**Table 1. WHO classification of mastocytosis**

Variant	Subvariants
Cutaneous mastocytosis	Urticaria pigmentosa
	Maculopapular
	Diffuse
Indolent systemic mastocytosis	Solitary mastocytoma of skin
	Smoldering SM
Systemic mastocytosis with an associated clonal hematologic non-MC-lineage disease	Isolated bone marrow mastocytosis
	SM-AML
	SM-MDS
	SM-MPD
	SM-CEL or SM-HES
Aggressive systemic mastocytosis	SM-CMML
	SM-NHL
	MC leukemia
MC sarcoma	
Extracutaneous mastocytom	

Adapted from Swerdlow et al.<sup>1</sup>

MC indicates mast cell; SM, systemic mastocytosis; AML, acute myeloid leukemia; MDS, myelodysplastic syndrome; MPN, myeloproliferative neoplasia; CEL, chronic eosinophilic leukemia; HES, hypereosinophilic syndrome; CMML, chronic myelomonocytic leukemia; and NHL, non-Hodgkin lymphoma.

adult SM,<sup>6</sup> and <0.5% of all French cases of mastocytosis reported in the CEREMAST database.

The median patient age at diagnosis was 52 years (range, 5-76 years) with a female predominance (sex ratio, F/M, of 1.5). Ethnic origin was available for 21 cases and consisted of 18 white and 3 Asian patients. No familial cases have been reported so far. Eleven patients (27%) had a history of mastocytosis and were considered as secondary MCL; whereas 30 patients (73%) were considered as having de novo MCL.

In this cohort, de novo MCL patients were older than patients with secondary MCL with a median age at diagnosis of, respectively, 51 years and 35 years. This apparent younger age in the secondary MCL group is because of the 4 patients with pediatric mastocytosis which had evolved into MCL. After exclusion of these 4 pediatric cases, the median age of both groups at MCL diagnosis was 51.5 years. Women presented more frequently with de novo MCL (60%). Ethnic origin was not different between the MCL subgroups, both mostly composed of whites (85%). After a short follow-up, 66% of the patients had died with a median survival time of 6 months (1-98 months).

## Clinical manifestations

MC activation symptoms (MCAS) were frequently observed (Table 3). They included flushes (60%), fever (52%), malaise (36%), diarrhea (28%), and tachycardia (20%). Pollakiuria (7%), neuropsychiatric symptoms (6%), and severe prefractural osteoporosis (6%) were rare. Many patients suffered from asthenia (78%), severe weight loss of >10% of total body weight (38%), and anorexia (20%). Symptoms of MC activation appeared more frequent among patients without *KIT* D816V mutation (85%) than in the group with this mutation (61%).

On physical examination, hepatomegaly and splenomegaly were the most frequent clinical signs and were present, respectively, in 68% and 65% of the patients with a median spleen enlargement of 21 cm (ranging from 13 to 25 cm). Lymph node enlargement was found in 37% and skin involvement was only

present in 30% of all cases. Gastrointestinal manifestations frequently included gastroduodenal ulcers (29%)<sup>11-20</sup> which were often complicated by gastrointestinal hemorrhage (64%). Gastroduodenal ulcers seem to be more frequently associated with the *KIT* D816V (12.5%) mutation than with other *KIT* mutations (0%). Ascites and portal hypertension were present in 18% and 16% of cases, respectively (Table 3).

## De novo or secondary MCL

A comparison between de novo (n = 30) and secondary (n = 11) MCL subgroups revealed more frequent cutaneous manifestations (urticaria pigmentosa) in secondary MCL. In secondary MCL, this is certainly because of the previous mastocytosis. Other clinical features—including hepatosplenomegaly, lymph node enlargement, ascites, and symptoms of MC activation—were comparable between the 2 groups. Interestingly, no gastroduodenal ulcers were observed in patients with secondary MCL whereas they were found in 38% of de novo MCL cases. As gastroduodenal ulcers are linked to the release of histamine by pathologic MC,<sup>21,22</sup> we could hypothesize that in de novo MCL, pathologic MC are highly aggressive, proliferate rapidly, infiltrate all organs (including the digestive tract), and degranulate easily, releasing large amounts of histamine, leading to gastroduodenal ulcer formation.

## Mast cell leukemia and clonal hematologic non-MC-lineage disease

MCL is rarely associated with clonal hematologic non-MC disease. Only 4 cases (8%) were found in the literature. AHNMD were mainly myelodysplastic syndromes (n = 3) and a chronic myelomonocytic leukemia (n = 1). Clinical symptoms were not different from other MCL manifestations, and the aleukemic form of the disease was predominant. AHNMD was only found in the *KIT* D816V mutation subgroup (n = 3/7). Cytogenetic studies revealed a 5q deletion in 2 cases which was more likely related to the MDS clone rather than to MC clones. The prognosis was also poor and not different from MCL without AHNMD (Tables 3-4).

## Laboratory characteristics

### Blood and marrow characteristics

The percentage of circulating MC ranged from 0% to 72% of all leukocytes. Aleukemic MCL was the most frequent form found,

**Table 2. WHO diagnostic criteria (2008) for systemic mastocytosis**

Criteria
<b>Major</b>
Multifocal, dense infiltrates of MC ( $\geq 15$ MC in aggregates) in BM and/or other extracutaneous organ(s)
<b>Minor</b>
(1) >25% of MC in the infiltrate of biopsy sections are spindle-shaped or have atypical morphology or, of all MC in the BM aspirate smears, >25% are immature or atypical
(2) Activating point mutation at codon 816 of <i>c-KIT</i> in BM, blood, or another extracutaneous organ
(3) MC in BM, blood, or extracutaneous organs express CD2 and/or CD25 in addition to normal MC markers
(4) Total serum tryptase persistently exceeds 20 ng/mL*

Diagnosis of systemic mastocytosis requires the presence of the major criterion and 1 minor criterion or at least 3 minor criteria.

MC indicates mast cell; and BM, bone marrow.

\*Serum tryptase is not valid as a criterion if there is an associated clonal myeloid disorder.

**Table 3. Clinical and biologic characteristics of MCL patients: literature review**

	MCL			MCL with pediatric mastocytosis, n = 4
	All, N = 51	De novo, n = 30	Secondary, n = 11	
Median age at diagnosis, y (range)	52 (5-76)	51.5 (18-76)	35 (5-75)	24 (5-53)
Female/Male	30/20	18/11	5/6	3/1
<b>Ethnicity, n (%)</b>				
White	18/21 (86)	13/15 (87)	5/6 (83)	2 (50)
Asiatic	3/21 (14)	2/15 (13)	1/6 (16)	1 (25)
Familial mastocytosis, n (%)	0 (0)	0 (0)	0 (0)	0 (0)
Median time from symptoms to diagnosis, mo (range)	5 (0-108)	3 (0-24)	6 (0-108)	4.5 (0-108)
History of mastocytosis, n (%)	11/40 (27)		11 (100)	4 (100)
Aleukemic MCL, n (%)	29/47 (62)	15 (50)	7 (70)	4 (100)
<b>Organ involvement, n (%)</b>				
Skin, UP	15/50 (30)	4 (14)	5 (45)	4 (100)
Hepatomegaly	32/47 (68)	21 (78)	6 (60)	2 (50)
Splenomegaly	38/49 (65)	23 (82)	9 (82)	4 (100)
Lymph nodes	16/43 (37)	11 (44)	3 (33)	1/2 (50)
Ascites	9/50 (18)	5 (17)	1 (9)	0 (0)
Gastrointestinal ulcer, n (%)	11/38 (29)	10 (38.4)	0 (0)	0 (0)
AHNMD, n (%)	4/40 (10)	3 (11)	0	0
MCAS, n (%)	39/50 (78)	24 (83)	8 (73)	3 (75)
<b>KIT mutation</b>	28/51 (55)	15 (50)	5 (45)	2 (50)
D816V KIT mutation	13/28 (46)	6 (40)	1 (20)	0
WT KIT	2/28 (7)	1 (6)	1 (20)	0
502-503 KIT mutation	3/28 (11)	2 (13)	1 (20)	1
522/560/654 KIT mutation	3/28 (11)	1 (6)	2 (40)	1
Abnormal cytogenetics, n (%)*	4/24 (17)	3 (27)		
<b>Phenotype, n (%)</b>				
CD2 <sup>+</sup>	15/29 (52)	6 (46)	1	0
CD25 <sup>+</sup>	18/24 (75)	6 (50)	3	1/3
CD2 <sup>-</sup> /CD25 <sup>+</sup>	3/24	1	1	1/3
CD2 <sup>-</sup> /CD25 <sup>-</sup>	9/24	5	3	2/3
CD2 <sup>+</sup> /CD25 <sup>+</sup>	13/24	4	1	0
CD2 <sup>+</sup> /CD25 <sup>-</sup>	1/24	1	0	0
<b>Laboratory data, median (range)</b>				
Tryptase, ng/L	433 (21-2357)	433 (21-742)	250 (173-2357)	173.5 (173-200)
Hemoglobin, g/dL	9.9 (5.4-14)	9 (5.4-13.7)	11 (8.1-13.3)	12.5 (8.1-13.3)
Platelets, G/L	110 (5-318)	82 (5-202)	111 (30-150)	136 (101-318)
PMN, G/L	3.65 (0.99-15.3)	6.0 (0.99-14)		8.5 (1.7-15.3)
BM mastocytes %	50 (20-100)	60 (20-100)	60 (25-90)	60 (25-75)
Blood mastocytes %	5.5 (0-72)	7 (0-72)	0 (0-12)	2 (one tested)
<b>Outcome</b>				
Death, n (%)	33/48 (69)	24 (83)	5 (62)	2 (50%)†
Median survival time, mo (range)	6 (0.5-98)	4 (0.5-24)	5 (1-18)	

MCL indicates mast cell leukemia; UP, urticaria pigmentosa; AHNMD, associated clonal hematologic non-MC-lineage disease; MCAS, mast cell activation syndrome including flushes, fever, malaise, diarrhea, and tachycardia; WT, wild type; PMN, polymorphonuclear; and BM, bone marrow.

\*Abnormal cytogenetics, 5q deletion (2 patients with AHNMD), t(10;16)(q22;q13q22), and t(8;21)(q22;q22) (2 patients).

†No information on the other 2 patients at 4 months.

making up 62% of all cases; 70% of secondary MCL and 55% of de novo MCL. Anemia was always present at diagnosis with a median hemoglobin value of 9.9 g/dL and a lower hemoglobin level in de novo (9 g/dL) than in secondary (11 g/dL) MCL patients. Thrombocytopenia was also frequent. The median platelet count was 110 G/L in the whole group of patients with lower median platelet counts in the de novo than in the secondary MCL patients (82 vs 111 G/L).

Levels of polymorphonuclear cells were within normal values with a median count of 3.65 G/L. The median bone marrow mast cell infiltration was 50%, ranging from 20% to 100% with no difference between de novo and secondary MCL subgroups. Serum tryptase levels were always increased with a median level of 433 ng/L (Table 3).

### Morphology

Normal MCs and their progenitors display 4 morphologic stages of differentiation in BM smears stained with May-Grünwald-Giemsa: (1) ungranulated but tryptase-positive blast cells, (2) metachromatic blast, (3) promastocyte, and (4) typically round mononuclear mature MC with metachromatic granules in the cytoplasm.

Malignant MC from MCL patients may exhibit the features classically encountered in mastocytosis with mature MC displaying morphologic abnormalities such as elongated cytoplasmic extensions (spindle-shaped MC), an eccentric oval nucleus, hypogranulated cytoplasm, and possible focal granule accumulations (Figure 1).

MCL may also typically exhibit immature forms of MC, seldom seen in other types of mastocytosis, reminiscent of the whole

**Table 4. Patients' characteristics according to *KIT* sequencing: literature review**

	No D816V mutation, n = 15§	D816V mutations, n = 13
Media age at diagnosis, y (range)	46 (18-66)	58 (52-76)
Female/Male	10/4‡	8/5
<b>Ethnicity, n (%)</b>		
White	6 (85)	3 (75)
Asiatic	1 (15)	1 (25)
Familial mastocytosis	0 (0)	0 (0)
Median time from symptoms to diagnosis, mo (range)	5 (0-108)	5 (0-10)
History of mastocytosis, n (%)	4 (33)	1 (15)
Aleukemic MCL, n (%)	10 (83)	8 (61)
<b>Organ involvement, n (%)</b>		
Skin (UP)	4 (28)	3 (23)
Hepatomegaly	8 (57)	8 (66)
Splenomegaly	10 (71)	10 (77)
Lymph nodes	3 (25)	3 (23)
Ascites	2 (15)	5 (38)
Gastroduodenal ulcer, n (%)	0 (0)	1 (12.5)
AHNMD, n (%)	0 (0)	3 (43)
MCAS, n (%)	12 (85)	8 (61)
<b><i>KIT</i> mutation (%)*</b>		
D816V <i>KIT</i> mutation		13 (100)
WT <i>KIT</i>	2 (25)	
Exon 9 mutation	3 (37.5)	
Exon 10 mutation	1 (12.5)	
Exon 11 mutation	1 (12.5)	
Exon 13 mutation	1 (12.5)	
Not available	7 (46)	
Abnormal cytogenetics, n (%)†	1 (12.5) t(8;21)(q22;q22))	1 (8)
<b>Phenotype, n (%)</b>		
CD2 <sup>+</sup>	4 (33)	8 (80)
CD25 <sup>+</sup>	4 (36)	11 (92)
CD2 <sup>-</sup> /CD25 <sup>+</sup>	1 (8)	1 (8)
CD2 <sup>-</sup> /CD25 <sup>-</sup>	5 (42)	1 (8)
CD2 <sup>+</sup> /CD25 <sup>+</sup>	3 (25)	8 (66)
CD2 <sup>+</sup> /CD25 <sup>-</sup>	1 (8)	0 (0)
<b>Biological data, median (range)</b>		
Tryptase, ng/L	400 (173-742)	200 (111-2357)
Hemoglobin, g/dL	10 (5.4-12.5)	10 (7-13.7)
Platelets, × 10 <sup>9</sup> /L	117.5 (45-318)	74 (5-210)
PMN, × 10 <sup>9</sup> /L	1.5 (1.1-4)	10.5 (3.5-14)
BM mastocytes, % (range)	64 (23-100)	60 (30-90)
Blood mastocytes, % (range)	3.5 (1-31)	3.5 (1-20)
<b>Outcome</b>		
Death, n (%)	9 (69)	6 (46)
Median survival time, mo (range)	5 (0.5-29)	5.5 (2-23)

MCL indicates mast cell leukemia; UP, urticaria pigmentosa; AHNMD, associated clonal hematologic non-MC-lineage disease; MCAS, mast cell activation syndrome; PMN, polymorphonuclear; and BM, bone marrow.

\*Exon 9 mutation at codons 501-502-503; exon 10 mutation at codon 522, exon 11 mutation at codon 560, exon 13 mutation at codon 654; not available by *KIT* sequencing.

†Abnormal cytogenetics, 5q deletion (2 patients with AHNMD), t(10;16)(q22;q13q22) and t(8;21)(q22;q22) (2 patients).

‡One missing.

§Two patients with previous mast cell sarcoma and 2 patients with previous pediatric mastocytosis.

morphologic differentiation chronology. Promastocytes, metachromatic blasts, and even ungranulated blasts are seen with specific abnormalities such as polarized or coalescent granules, cytoplasmic lacunar areas, prominent nucleoli, fine nuclear chromatin, and bi- or multilobed nuclei (Figure 1).<sup>1,3</sup>

MCL differs from all other forms of SM in that diagnosis can rely on cytology alone.<sup>1,7,23</sup> In addition to qualitative features and to make the diagnosis, on cytologic analysis, MC should represent > 20% of nucleated cells in marrow aspirates or > 10% in peripheral blood. The diagnosis of an aleukemic variant of MCL is met if the count of MC on peripheral blood is < 10%.

Beyond these criteria for diagnosis, the detection of circulating mature MC is abnormal and must prompt investigation for MCL.

### Immunophenotype

In mastocytosis, abnormal antigen expression on MC is identified either by flow cytometry or immunohistochemistry. Expression of CD2 and/or CD25 is the most common feature of abnormal MC and is recognized as a minor criteria for diagnosis of mastocytosis.<sup>1</sup>

MC from MCL can express both CD25 and CD2, although the expression of CD25 and particularly CD2 was not found in, respectively, 25% and 48% of cases, and one-third of MCL cases reported in the literature had a double-negative CD2/CD25 immunophenotype (Table 3).<sup>24-26</sup> In line with the classic association of the *KIT* D816V mutation with the expression of CD2/CD25 on MC in SM, the positive coexpression of CD2 and CD25 was very frequent among MCL patients who were *KIT* D816V positive (66%) compared with those who were *KIT* D816V negative (25%). Thus, the common feature of pathologic MC encountered in most forms of mastocytosis is unreliable in MCL.

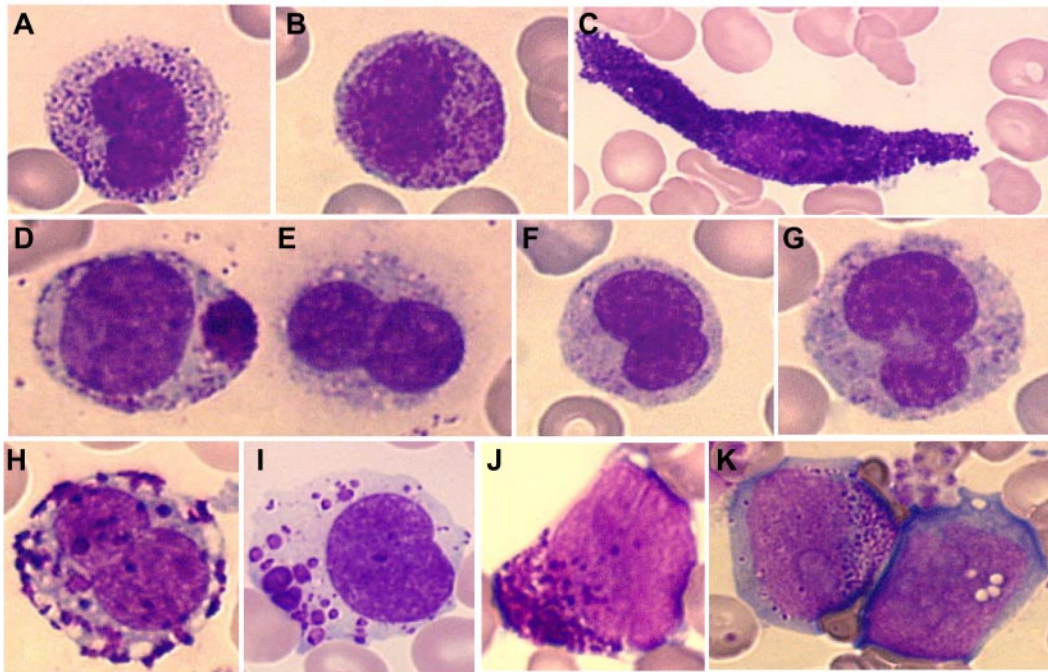
Recently, it has been proposed that aggressive forms of mastocytosis, including MCL, exhibit an immature phenotype, in contrast to the more indolent forms which are characterized by an activated immunophenotype.<sup>8,27</sup> It follows that MC from MCL may express immaturity markers such as CD123, CD34, HLA-DR, and display reduced expression of CD117 and FcεRI. The immature phenotype is correlated with multilineage *KIT* mutations in bone marrow and a poor prognosis.<sup>8,27</sup> From this observation, arises the concept that the occurrence of a *KIT* mutation in an early progenitor may result in multilineage involvement, early blockade of maturation of MC, and aggressive disease. In contrast, mutations that occur in a later-stage progenitor remain MC-restricted and lead to late maturation blockade with a mature and activated MC immunophenotype.<sup>27,28</sup> At present, the significance of the phenotypic heterogeneity according to different histologic, clinical, and genetic features remains unresolved.

### Cytogenetic and molecular characteristics

Cytogenetic studies were available for 23 of 51 reported cases. A normal cytogenetic profile was found in the majority of cases (83%). Two patients (9%) had a 5q deletion, and were diagnosed as having MCL associated with myelodysplastic syndrome,<sup>7</sup> with the deletion of 5q probably being related to the myelodysplastic clone rather than to MCL itself. Two other patients with de novo MCL had t(10;16)(q22;q13q22) and t(8;21)(q22;q22). According to these findings, there is no recurrent cytogenetic abnormality in MCL.

### c-*KIT* mutations

The *KIT* D816V mutation was detected in 13 of 28 patients studied (Table 4). In 8 patients without *KIT* D816V, the entire *KIT* gene was sequenced. In 2 cases, *KIT* was wild type (WT), whereas in the other 6 cases, mutations were detected in exon 9 (n = 3),<sup>29,30</sup> exon 10 (n = 1),<sup>31</sup> exon 11 (n = 1),<sup>32</sup> and exon 13 (n = 1).<sup>33</sup> It is noteworthy that these mutations are also found in stromal gastrointestinal tumors, which are aggressive. Most of these non-D816V mutations have only recently been described, 1 in 2004 and 6 since



**Figure 1. Cytologic abnormalities of mast cells in MCL.** Mast cells from MCL range from mature mast cells (A-D) to more immature cells with (E-I) promastocytes and (J-K) even metachromatic or (K) ungranulated blasts. (A-B) Circulating round mast cells; (C) spindle-shaped mast cell; (D) packed and polar granule aggregates; (E-G) degranulated/hypogranulated promastocytes; (H-I) coalescent granules; (I) lacunary cytoplasmic areas; (J-K) undifferentiated immature cells with metachromatic granules and prominent nucleoli.

2011. This may explain why in previous literature reviews, made when the *KIT* gene had not been entirely sequenced, the *KIT* D816V mutation was described as the most frequently encountered mutation. We now know that in MCL this is not so.

In the non-*KIT* D816V mutation subgroup, 4 patients had a history of mastocytosis including 2 MC sarcomas and 2 with pediatric cutaneous mastocytosis, that is, 33% of the patients studied, in contrast to only 1 of 7 patients in the *KIT* D816V mutation group (15%).

Death occurred more frequently in the subgroup without D816V mutation (69%) than for those with the D816V mutation (46%), although the median survival time did not differ.

## TET2

*TET2* (Ten-Eleven-Translocation 2) is 1 of 3 homologous human proteins (*TET1*, *TET2*, and *TET3*) that may play a role in the epigenetic regulation of transcription. *TET2* mutations have been reported in 29% of systemic mastocytosis, with 15% ISM, 40% ASM, and 35% being SM-AHNMD.<sup>34</sup> Recent data from our group reporting on 74 patients with cutaneous and SM, including 4 with MCL, showed the *TET2* mutation as a potential marker to diagnose and predict severe forms of the disease.<sup>35</sup>

## Secondary MCL after pediatric mastocytosis

Interestingly, 4 patients developed MCL after pediatric mastocytosis (Table 6).<sup>30,31,36,37</sup> In 1 case, diffuse cutaneous mastocytosis evolved into MCL, leading to death in childhood<sup>37</sup> (*KIT* gene sequencing was not available at that time). In 2 other cases,<sup>30,31</sup> maculopapular cutaneous mastocytosis occurred in childhood and developed into MCL 25 and 53 years later. Mutations in exon 9 and 10 were found, with no or low expression of CD2 and CD25. Both

patients were treated with imatinib, obtained partial response, and were alive at 5 and 18 months, respectively. The last interesting case<sup>36</sup> is that of mastocytoma diagnosed at 5 years of age. After complete surgical excision for aesthetic reasons at age 19, the patient developed aggressive systemic mastocytosis and MCL. Allogeneic stem cell transplantation was ineffective and was followed by rapid disease progression and death. This last case demonstrates that mastocytoma can evolve into MCL. The description of frequent non-D816V *KIT* mutations among children with cutaneous mastocytosis<sup>38</sup> may indicate that mutations in exon 9 and 10 of *KIT* can lead to severe forms of mastocytosis. Taken together, these 4 cases highlight the risk of evolution of pediatric mastocytosis to MCL.

## Management of mast cell burden

In general, treatments of SM can be divided into 2 broad categories: (1) those intended to control mast cell mediator-related symptoms and reduce disabilities associated with the disease and (2) those intended to limit MC burden in aggressive forms and increase survival by the use of cytoreductive therapy.<sup>39</sup> To date, there is no approved standard therapy. For MCL, few options are available for treatment and because of the rarity of the disease very few clinical trials address the question.

### Steroids

Corticosteroids are often tried, at least at the onset of the disease. High-dose corticosteroids may induce a reduction in MC burden and improve clinical symptoms including flushing, ascitis, pain, cardiac failure as well as cytopenia. However, their effect is usually transient and precautions should be taken. Proton pump inhibitor

**Table 5. Literature review of MCL cases**

Authors	Year of publication	No. of patients	Age at diagnosis, y	WHO MCL	De novo MCL	Aleukemic MCL	c- <i>KIT</i> mutations	Survival time, mo
Hissard et al <sup>83</sup>	1951	1	47	Yes	No	Yes	NA	NA
Waters et al <sup>37</sup>	1956	1	5	Yes	No	Yes	NA	3
Efrati et al <sup>15</sup>	1957	1	52	Yes	Yes	No	NA	2
Friedman et al <sup>16</sup>	1958	1	NA	Yes	Yes	No	NA	2
Brinkmann et al <sup>84</sup>	1959	1	51	Yes	Yes	NA	NA	NA
Szweda et al <sup>19</sup>	1962	1	50	Yes	Yes	Yes	NA	4
Mutter et al <sup>85</sup>	1963	1	59	Yes	Yes	Yes	NA	8
Daniel et al <sup>14</sup>	1975	1	39	Yes	Yes	No	NA	5
Clancy et al <sup>86</sup>	1976	1	46	Yes	Yes	NA	NA	4
Coser et al <sup>12</sup>	1980	1	54	Yes	Yes	No	NA	1
Kimura et al <sup>87</sup>	1979	1	39	Yes	Yes	No	NA	NA
Horny et al <sup>88</sup>	1986	1	75	Yes	No	No	NA	1
Dalton et al <sup>13</sup>	1986	1	57	Yes	Yes	No	NA	8
Travis et al <sup>20</sup>	1986	1	52	Yes	Yes	No	NA	1
Baghestanian et al <sup>11</sup>	1996	1	34	Yes	Yes	No	NA	3
Le Cam et al <sup>18</sup>	1997	1	44	Yes	Yes	Yes	NA	7
Escribano et al <sup>89</sup>	1997	1	67	Yes	Yes	Yes	NA	16
Kyriakou et al <sup>17</sup>	1998	1	72	Yes	Yes	Yes	NA	9
Pauls et al <sup>90</sup>	1999	1	48	Yes		No	Negative	7
Lin et al <sup>79</sup>	2002	1	25	Yes	No	No	NA	NA
Horny et al <sup>91</sup>	2002	1	48	Yes	Yes	Yes	Negative	NA
Pardanani et al <sup>65</sup>	2003	1	NA	Yes	Yes	NA	Negative	0, 5
Chen et al <sup>82</sup>	2003	1	18	Yes	Yes	Yes	Negative	
Akin et al <sup>92</sup>	2004	1	25	Yes	No	Yes	Phe522Cys	
Noack et al <sup>9</sup>	2004	1	75	Yes	Yes	Yes	D816V	
Gotlib et al <sup>73</sup>	2005	1	48	Yes	Yes	No	D816V	6
Penack et al <sup>46</sup>	2005	1	65	Yes	Yes	No	D816V	
Valentini et al <sup>7</sup>	2007	10	56*	Yes	No	Yes†	‡	24§
Krauth et al <sup>93</sup>	2007	1	35	Yes	No	Yes	WT	
Brcic et al <sup>77</sup>	2007	1	5	Yes	No	No	NA	
Aichberger et al <sup>72</sup>	2008	1	71	Yes	Yes	No	D816V	
Yoshida et al <sup>94</sup>	2009	1	52	Yes	Yes	No	D816V	
Arredondo et al <sup>24</sup>	2010	1	61	Yes	No	Yes	Negative	
Mital et al <sup>30</sup>	2011	1	53	Yes	Yes	Yes	dup 502-503	18
Spector et al <sup>93</sup>	2011	1	42	Yes	No	Yes	V654A	
Chantorn et al <sup>36</sup>	2012	1	23	Yes	No	Yes	NA	
Georjin-Lavialle et al <sup>29</sup>	2012	1	66	Yes	Yes	Yes	del(501;502)	
Georjin-Lavialle et al <sup>32</sup>	2012	1	42	Yes	No	NA	val 560 gly	
Joris et al <sup>95</sup>	2012	1	52	Yes	Yes	Yes	WT	3
Hermine et al	Unpublished	1	29	Yes	Yes	Yes	dup 501-502	6
Damaj et al	Unpublished	2	76, 58	Yes	Yes	Yes	D816V (2)	7, 11

MCL indicates mast cell leukemia; NA, not available; and WT, wild type.

\*Median age.

†Seven of 10 cases were aleukemic MCL.

‡Six patients were D816V c-*KIT* positive and 2 patients were D816V c-*KIT* negative.

§Median survival time at last reported follow-up.

therapy should be systematically started concurrently with the introduction of corticosteroids because of the increased risk of gastrointestinal bleeding, particularly in this context.

### Interferon- $\alpha$

In contrast to ASM and ISM,<sup>40-45</sup> reports on the use of interferon in MCL are scarce. In one report of 6 patients with MCL who were treated with interferon, only 2 patients obtained a partial response and this was of short duration.<sup>46</sup>

### 2-Chloro-deoxy-adenosine

The rationale behind the use of 2-Chloro-deoxy-adenosine (2-CdA) for the treatment of SM is based on the fact that MC are derived

from hematopoietic stem cells and may share a common progenitor with monocytes,<sup>47</sup> combined with the knowledge that the drug is particularly toxic to monocytes, both in vitro and in vivo.<sup>48</sup>

While the potential value of 2-CdA in the treatment of ASM has been confirmed in several studies,<sup>49,50</sup> in MCL, 2-CdA has no<sup>24,30</sup> or little<sup>7</sup> activity, although in rare cases a prolonged partial response has been observed.<sup>9</sup>

Ten patients with a diagnosis of MCL were treated with 2-CdA. Responses were obtained in 3 of them (30%) who were still alive at 17, 24, and 48 months (with no subsequent therapy for 2 patients).<sup>7,24,33,51</sup>

In our experience, when 68 patients with the diagnosis of SM were treated with single-agent Cladribine at a dose of 0.14 mg/kg/d for 5 or 7 consecutive days, no significant effects were observed in

**Table 6. Main features of MCL cases with a previous history of pediatric mastocytosis**

Author	Year	Sex	Age, mo*	Type†	Clinical evolution	MC phenotype	<i>KIT</i> sequencing	Cytological features	Treatment
Waters <sup>37</sup>	1957	M	9	DCM	5 y: MCL transformation	ND	ND	Mast cells appeared as large polymorphic cells with acidophilic cytoplasm and large rounded nucleus, few metachromatic granules were discerned in the cytoplasm.	None
Death within 3 mo due to diffuse hemorrhage.									
Akin <sup>31</sup>	2004	F	5	MPCM	22 y: deterioration of general status	CD2 <sup>neg</sup>	Phe 522 Cys	Round, highly granulated and centrally located nucleus	IFN $\alpha$ : no response
25 y: ASM									
And 6 mo later: MCL									
Mital <sup>30</sup>	2011	F	12	MPCM	47 y: unexplained splenomegaly	CD2 <sup>low</sup>	502-503 Dup	Large mast cells	2CDA: no response
53 y: aleukemic MCL									
56 y: MCL evolution									
Chantorn <sup>36</sup>	2012	F	5	Mastocytoma	10 y: MPCM	CD2 <sup>-</sup>	ND	Rare spindle shaped mast cells on bone marrow histology	poly chemotherapy,
19 y: mastocytoma exeresis									
23 y: ASM; MCL and death 5 mo later									
									allo-SCT, Steroids
									Tacrolimus:
									No response

MCL indicates mast cell leukemia; M, male; DCM, diffuse cutaneous leukemia; ND, not done; F, female; MPCM, maculopapular cutaneous mastocytosis; ASM, aggressive systemic mastocytosis; IFN $\alpha$ , interferon alpha; PR, partial response; FU, follow-up; BM, bone marrow; and allo-SCT, allogeneic stem cell transplantation.

\*Age at diagnosis of pediatric mastocytosis.

†Type of pediatric mastocytosis at diagnosis.

the subgroup of 3 patients with MCL. Combination therapies with high-dose cytarabine (O.H., oral communication at second annual meeting of reference centers, September 16, 2012), mTOR inhibitors,<sup>52</sup> or tyrosine kinase inhibitor (TKI)<sup>53</sup> need to be evaluated in patients with MCL.

**Targeted therapies or tyrosine kinase inhibitors**

The mutation in *c-KIT* codon 816 found in adult human mastocytosis causes constitutive activation of the *KIT* kinase.<sup>54</sup> Different classes of *KIT* activating mutations respond differentially to *KIT* inhibitors depending on the site and the type of mutation.<sup>55-58</sup> The presence and/or the type of *KIT* mutation have clinical prognostic importance.<sup>59</sup> Thus, data detailing mutations are useful in predicting drug resistance and supporting individualization of therapy based on the response of specific mutant proteins to specific drugs.

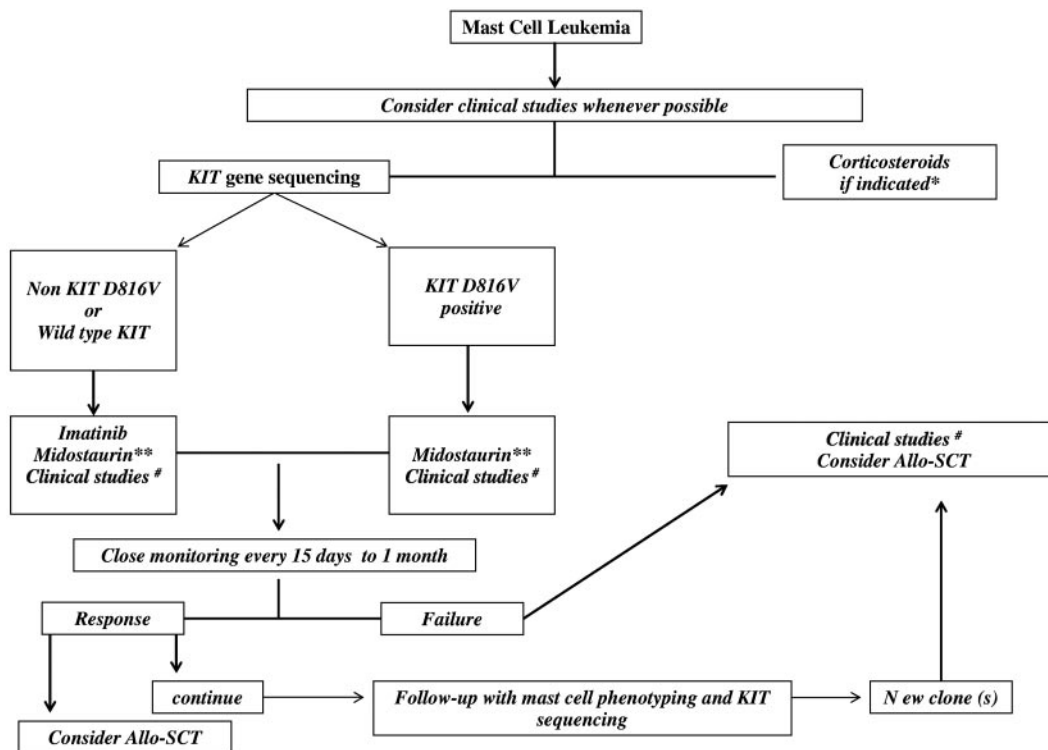
**Imatinib.** The rationale behind the use of imatinib in SM stems from its in vitro inhibitory activity of both WT and certain (eg, V560G; F522C) but not all D816V classes of constitutively active *KIT* receptors.<sup>31,60-65</sup> In October 2006, these data led the US Food and Drug Administration to approve the use of imatinib for adult patients with ASM lacking the D816V *KIT* mutation, or with unknown *KIT* mutational status, at a dose of 400 mg daily.

Nine patients with a diagnosis of MCL and treated by imatinib have so far been reported. Four (2 adults and 2 children) of them obtained a partial response (44%). The *KIT* mutations were Phe522Cys and Dup 502-503 in 2 responding patients and another responder had WT *KIT*. The fourth responding patient had the D816V *KIT*-positive mutation and was alive after 48 months on imatinib alone.<sup>7,30,31,33,65</sup>

**Masitinib.** Masitinib (AB1010) is a tyrosine kinase inhibitor which, in vitro, potently and selectively inhibits the mutated form in the juxtamembrane region of the *KIT* receptor and the *KIT* WT receptor. It also inhibits the PDGF receptor and the mutated fibroblast growth factor receptor (FGFR3). At the cellular level, masitinib is a more selective inhibitor of *KIT* WT-dependent cell proliferation (IC<sub>50</sub> of 0.2 $\mu$ M), than imatinib mesilate (IC<sub>50</sub> of 0.6 $\mu$ M). Masitinib is in general well-tolerated at the doses of 7.5-12 mg/kg/d used for oncology indications, and up to 6 mg/kg/d in nononcology indications.<sup>66</sup> The most frequent adverse events—nausea/vomiting, edema, rash, and diarrhea—are manageable, mild to moderate, and mostly resolve under treatment; nevertheless, 1.3% of patients experienced severe neutropenia that might be because of hypersensitivity of neutrophils to *KIT* inhibition.

Data on MCL patients is scarce. Two MCL patients not carrying the D816V *KIT* mutation were treated with masitinib.<sup>29</sup> One of them obtained partial response, relapsed 7 months after initiation of masatinib, and died from disease progression at 11 months. This drug needs to be further evaluated in this setting.

**Dasatinib.** Dasatinib is an oral bioavailable SRC/ABL inhibitor that has activity against multiple imatinib-resistant BCR-ABL isoforms in vitro and in vivo. It demonstrates significant inhibitory activity, in the nanomolar range, against both wild-type *KIT* and the *KIT* D816V mutation<sup>67</sup> as well as against autophosphorylation of the juxtamembrane domain of mutant *KIT* and *KIT*-dependent activation of downstream pathways<sup>68</sup> in in vitro and cell-based kinase assays. Growth inhibition of a human mastocytosis cell line carrying *KIT* D816V has also been achieved with this drug.<sup>67</sup> However, its activity has only been modest in clinical settings.<sup>51,69-71</sup>



**Figure 2. Proposed algorithm for MCL treatment.** \*Fever, bone pain, flushing, mast cell activation symptoms, cardiac failure, pleural effusion, ascites, cytopenia. \*\*If available through a compassionate patient-named program. #Examples of drugs for clinical studies: cytarabine + 2-chlorodeoxyadenosine (2-CdA); CLAG (clofarabine, aracytine, granulocyte stimulating agents); FLAG (fludarabine, aracytine, granulocyte stimulating agents); tyrosine kinase inhibitors (midostaurin, masitinib, ponatinib, sorafenib), or Aurora kinase inhibitors in combination with other drugs; mammalian target of rapamycin (m-TOR) inhibitors; deoxy nucleotide methyl-transferase inhibitors (azacytidine, decitabine).

Three patients with MCL have been treated with dasatinib without any efficacy and patients died from disease progression at 1, 3, and 9 months after diagnosis.<sup>29,33,72</sup>

**PKC 412.** PKC412 (Midostaurin; Novartis), a small molecule inhibitor of multiple type III TK receptors involved in hematopoiesis and leukemia, inhibits all major isoforms of protein kinase C as well as the TK associated with the vascular endothelial growth factor receptor. It can also exert inhibitory activity on other mutated tyrosine kinases implicated in a variety of diseases, including KIT (systemic mast cell disease, gastrointestinal stromal tumors, PDGFR, or FGFR1 myeloproliferative disorders). Midostaurin has shown strong inhibitory activity on neoplastic human MC carrying the *KIT* D816V mutation in preclinical and clinical settings.<sup>53,73,74</sup> However, data reporting on the efficacy of midostaurin in MCL is scarce.

Our experience with PKC-412 is based on 21 patients treated for advanced SM. Four of them had been diagnosed with MCL (n = 2) or MCL with AHNMD (n = 2). Partial responses were obtained in 2 patients (Damaj G.D., and O.H. and O.C., unpublished data). Preliminary results from the phase 2 study of *KIT* inhibitor midostaurin showed an overall response rate in advanced SM, of 60% with the majority being major responses (52.5%). Of the 7 patients with MCL (3 patients with AHNMD), 4 (57%) patients achieved major responses, including 3 ongoing incomplete remissions (19+ months in 2 patients and 32+ months in 1 patient). The overall survival in MCL patients was 22.6 months.<sup>75</sup> These results are encouraging and combination strategies with chemotherapy or other targeted therapies could be of interest (Figure 2).

## Chemotherapy

Various cytostatic drugs have been shown to induce apoptosis and inhibit proliferation of the human MCL cell line HMC-1.<sup>76</sup> However, whether patients with MCL may benefit from combination polychemotherapy remains unknown. AML-type induction chemotherapy has been used in 6 of 51 reported MCL patients. However, the response rate was not available for all patients, the median survival time was 7 months, and all patients died between 2 and 29 months from progression or multiorgan failure.<sup>77-79</sup> These results suggest a lack of efficacy of AML-type induction polychemotherapy in MCL patients.

## Bone marrow transplantation

Allogeneic stem cell transplantation (allo-SCT) could play a potential curative role in MCL. Some reports have shown a positive role of the graft compared with the mast cell effect in decreasing MC burden after the transplant. However, allo-SCT has limited ability to completely eradicate the disease.<sup>80,81</sup>

Rapid engraftment of donor MCs has been documented after allo-SCT. Thus, caution should be applied when evaluating the neoplastic MC burden after allo-SCT, and MC should be analyzed carefully to differentiate reactive donor MC from the potential persistence of the neoplastic MC clone.<sup>82</sup>

Seven cases of patients who received allo-SCT have been reported. Sustained remission was not achieved in any of them. One patient, however, obtained a response but died 23 months after transplantation in complete remission.<sup>7,18,36,81,82</sup>



Recently, Ustun et al (oral communication, European Competence Network on Mastocytosis meeting, September 2012), reported on a retrospective series of 23 patients with SM who received allo-SCT either after myeloablative conditioning (n = 14) or a fludarabine-based reduced-intensity regimen. The best responses were obtained in SM-AHNMD (AML/MDS) and the worst were in MCL patients. They confirmed the results of a previous report in which only rarely was CR obtained after transplantation. Therefore, in the absence of sufficient data in MCL patients, allo-SCT remains to be proven and further evaluation of this strategy in these patients is needed, alone or in combination with drugs to obtain greater reduction in disease burden, which may translate to better long-term control of the disease (Figure 2).

## Conclusion

MCL is a rare form of systemic mastocytosis with poor prognosis and very few therapeutic options. It can appear de novo or after previous mastocytosis. It shares more clinicobiologic aspects with ASM than with AML. Hepatosplenomegaly, anemia, and thrombocytopenia are usually present and aleukemic forms are frequent. The serum tryptase level is usually high. MCs are usually CD2 and/or CD25 positive. Wild-type or exon 9 to 13 *KIT* mutations are not rare and complete gene sequencing is needed. Therapy usually fails and the median survival time is < 6 months. New combination therapies including *KIT* inhibitors, chemotherapy, 2-CdA, and

bone marrow transplantation should in the near future improve the prognosis of this still devastating disease.

## Acknowledgments

The authors thank Alison Foote (Grenoble Clinical Research Center) for critically editing the manuscript with particular attention to language usage.

## Authorship

Contribution: S.G.-L., L.L., and G.D. reviewed and analyzed the literature data; S.G.-L., O.H., and G.D. conceived and designed the study; P.D. M.-O.C., O.H., and G.D. provided unpublished patients' data; and all authors wrote the manuscript and gave final approval of the manuscript.

Conflict-of-interest disclosure: O.H. and P.D. are co-founders of, consultants to, and stockholders in AB Science (Paris, France). The remaining authors declare no competing financial interests.

Correspondence: Gandhi Damaj, MD, Department of Hematology, CHU d'Amiens, Hôpital Sud, Avenue Laennec, 80054, Amiens, France; e-mail: damaj.gandhi@chu-amiens.fr; or Prof Olivier Hermine, Service d'Hématologie Adultes, CNRS UMR 8147 et Centre de Référence sur les Mastocytoses, Hôpital Necker-Enfants Malades, Université Paris Descartes, AP-HP, 149 Rue des Sèvres, 75743 Paris Cedex 15, France; e-mail: ohermine@gmail.com.

## References

- Swerdlow SH CE, Harris NL, et al, eds. *WHO Classification of Tumours of Haematopoietic and Lymphoid Tissues*. Lyon, France: International Agency for Research on Cancer; 2008.
- Valent P, Akin C, Escribano L, et al. Standards and standardization in mastocytosis: consensus statements on diagnostics, treatment recommendations and response criteria. *Eur J Clin Invest*. 2007;37(6):435-453.
- Valent P, Akin C, Sperr WR, et al. Diagnosis and treatment of systemic mastocytosis: state of the art. *Br J Haematol*. 2003;122(5):695-717.
- Tefferi A, Pardanani A. Clinical, genetic, and therapeutic insights into systemic mast cell disease. *Curr Opin Hematol*. 2004;11(1):58-64.
- Tefferi A, Pardanani A. Systemic mastocytosis: current concepts and treatment advances. *Curr Hematol Rep*. 2004;3(3):197-202.
- Lim KH, Tefferi A, Lasho TL, et al. Systemic mastocytosis in 342 consecutive adults: survival studies and prognostic factors. *Blood*. 2009;113(23):5727-5736.
- Valentini CG, Rondoni M, Pogliani EM, et al. Mast cell leukemia: a report of ten cases. *Ann Hematol*. 2008;87(6):505-508.
- Teodosio C, Garcia-Montero AC, Jara-Acevedo M, et al. An immature immunophenotype of bone marrow mast cells predicts for multilineage D816V *KIT* mutation in systemic mastocytosis. *Leukemia*. 2012;26(5):951-958.
- Noack F, Sotlar K, Notter M, Thiel E, Valent P, Horny HP. Aleukemic mast cell leukemia with abnormal immunophenotype and c-kit mutation D816V. *Leuk Lymphoma*. 2004;45(11):2295-2302.
- Joachim G. Über Mastzellenleukämien. *Deutsches Archiv für Klinische Medizin*. 1906;87:437.
- Baghestanian M, Banki H, Sillaber C, et al. A case of malignant mastocytosis with circulating mast cell precursors: biologic and phenotypic characterization of the malignant clone. *Leukemia*. 1996;10(1):159-166.
- Coser P, Quaglini D, De Pasquale A, Colombetti V, Prinoto O. Cytobiological and clinical aspects of tissue mast cell leukaemia. *Br J Haematol*. 1980;45(1):5-12.
- Dalton R, Chan L, Batten E, Eridani S. Mast cell leukaemia: evidence for bone marrow origin of the pathological clone. *Br J Haematol*. 1986;64(2):397-406.
- Daniel MT, Flandrin G, Bernard J. [Acute mast cell leukemia. Cytochemical and ultrastructural study, about a particular case (author's transl)]. *Nouv Rev Fr Hematol*. 1975;15(3):319-332.
- Efrati P, Klajman A, Spitz H. Mast cell leukemia? Malignant mastocytosis with leukemia-like manifestations. *Blood*. 1957;12(10):869-882.
- Friedman BI, Will JJ, Freiman DG, Braunstein H. Tissue mast cell leukemia. *Blood*. 1958;13(1):70-78.
- Kyriakou D, Kouromalis E, Konsolas J, et al. Systemic mastocytosis: a rare cause of noncirrhotic portal hypertension simulating autoimmune cholangitis—report of four cases. *Am J Gastroenterol*. 1998;93(1):106-108.
- Le Cam MT, Wolkenstein P, Cosnes A, et al. [Acute mast cell leukemia disclosed by vasomotor flushing]. *Ann Dermatol Venerol*. 1997;124(9):621-622.
- Szweda JAAJ, Fine G, Nixon RK, Rupe CE. Systemic mast cell disease: a review and report of three cases. *Am J Med*. 1962;32(2):227-239.
- Travis WD, Li CY, Hoagland HC, Travis LB, Banks PM. Mast cell leukemia: report of a case and review of the literature. *Mayo Clin Proc*. 1986;61(12):957-966.
- Cheher JA, Jensen RT, Dubois A, O'Dorisio TM, Gardner JD, Metcalfe DD. Gastrointestinal dysfunction in systemic mastocytosis. A prospective study. *Gastroenterology*. 1988;95(3):657-667.
- Friedman BS, Steinberg SC, Meggs WJ, Kaliner MA, Frieri M, Metcalfe DD. Analysis of plasma histamine levels in patients with mast cell disorders. *Am J Med*. 1989;87(6):649-654.
- Horny HP, Sotlar K, Valent P, Hartmann K. Mastocytosis: a disease of the hematopoietic stem cell. *Dtsch Arztebl Int*. 2008;105(40):686-692.
- Arredondo AR, Gotlib J, Shier L, et al. Myelomastocytic leukemia versus mast cell leukemia versus systemic mastocytosis associated with acute myeloid leukemia: a diagnostic challenge. *Am J Hematol*. 2010;85(8):600-606.
- Horny HP, Sotlar K, Valent P. Mastocytosis: state of the art. *Pathobiology*. 2007;74(2):121-132.
- Valent P. Mast cell leukemia—a rare form of myeloid leukemia. *Wien Klin Wochenschr*. 2002;114(5-6):173-174.
- Teodosio C, Garcia-Montero AC, Jara-Acevedo M, et al. Mast cells from different molecular and prognostic subtypes of systemic mastocytosis display distinct immunophenotypes. *J Allergy Clin Immunol*. 2010;125(3):719-726.
- Garcia-Montero AC, Jara-Acevedo M, Teodosio C, et al. *KIT* mutation in mast cells and other bone marrow hematopoietic cell lineages in systemic mast cell disorders: a prospective study of the Spanish Network on Mastocytosis (REMA) in a series of 113 patients. *Blood*. 2006;108(7):2366-2372.
- Georgin-Lavialle S, Lhermitte L, Suarez F, et al. Mast cell leukemia: identification of a new c-Kit mutation, dup(501-502), and response to masitinib, a c-Kit tyrosine kinase inhibitor. *Eur J Haematol*. 2012;89(1):47-52.
- Mital A, Piskorz A, Lewandowski K, Wasag B, Limon J, Hellmann A. A case of mast cell leukemia with exon 9 *KIT* mutation and good response to imatinib. *Eur J Haematol*. 2011;86(6):531-535.
- Akin C, Fumo G, Yavuz AS, Lipsky PE,

- Neckers L, Metcalfe DD. A novel form of mastocytosis associated with a transmembrane c-kit mutation and response to imatinib. *Blood*. 2004; 103(8):3222-3225.
32. GeorGIN-Lavialle S, Aguilar C, Guieze R, et al. Mast cell sarcoma, a rare and aggressive entity: report of 2 cases and review of the literature [published online ahead of print November 5, 2012]. *J Clin Oncol*. doi:JCO.2012.41.9549.
33. Spector MS, Iossifov I, Kritharis A, et al. Mast-cell leukemia exome sequencing reveals a mutation in the IgE mast-cell receptor beta chain and KIT V654A. *Leukemia*. 2012;26(6):1422-1425.
34. Tefferi A, Levine RL, Lim KH, et al. Frequent TET2 mutations in systemic mastocytosis: clinical, KITD816V and FIP1L1-PDGFR $\alpha$  correlates. *Leukemia*. 2009;23(5):900-904.
35. Soucie E HK, Hanssens K, Mercher T, et al. In aggressive forms of mastocytosis, TET2 loss cooperates with c-KITD816V to transform mast cells. *Blood*. 2012;120(24):4846-4849.
36. Chantorn R, Shwayder T. Death from mast cell leukemia: a young patient with longstanding cutaneous mastocytosis evolving into fatal mast cell leukemia. *Pediatr Dermatol*. 2012;29(5):605-609.
37. Waters WJ, Lacson PS. Mast cell leukemia presenting as urticaria pigmentosa; report of a case. *Pediatrics*. 1957;19(6):1033-1042.
38. Bodemer C, Hermine O, Palmerini F, et al. Pediatric mastocytosis is a clonal disease associated with D(816)V and other activating c-KIT mutations. *J Invest Dermatol*. 2010;130(3):804-815.
39. Valent P, Sperr WR, Akin C. How I treat patients with advanced systemic mastocytosis. *Blood*. 2010;116(26):5812-5817.
40. Kluijn-Nelemans HC, Jansen JH, Breukelman H, et al. Response to interferon alpha-2b in a patient with systemic mastocytosis. *N Engl J Med*. 1992; 326(9):619-623.
41. Butterfield JH. Response of severe systemic mastocytosis to interferon alpha. *Br J Dermatol*. 1998;138(3):489-495.
42. Worobec AS, Kirshenbaum AS, Schwartz LB, Metcalfe DD. Treatment of three patients with systemic mastocytosis with interferon alpha-2b. *Leuk Lymphoma*. 1996;22(5-6):501-508.
43. Casassus P, Caillaud-Vigneron N, Martin A, et al. Treatment of adult systemic mastocytosis with interferon-alpha: results of a multicenter phase II trial on 20 patients. *Br J Haematol*. 2002;119(4): 1090-1097.
44. Hauswirth AW, Simonitsch-Klupp I, Uffmann M, et al. Response to therapy with interferon alpha-2b and prednisolone in aggressive systemic mastocytosis: report of five cases and review of the literature. *Leuk Res*. 2004;28(3):249-257.
45. Pardini S, Bosincu L, Bonfigli S, Dore F, Longinotti M. Anaphylactic-like syndrome in systemic mastocytosis treated with alpha-2-interferon. *Acta Haematol*. 1991;85(4):220.
46. Penack O, Sotlar K, Noack F, Horny HP, Thiel E, Nottter M. Cladribine therapy in a patient with an aleukemic subvariant of mast cell leukemia. *Ann Hematol*. 2005;84(10):692-693.
47. Kirshenbaum AS, Goff JP, Semere T, Foster B, Scott LM, Metcalfe DD. Demonstration that human mast cells arise from a progenitor cell population that is CD34(+), c-kit(+), and expresses aminopeptidase N (CD13). *Blood*. 1999;94(7): 2333-2342.
48. Carrera CJ, Terai C, Lotz M, et al. Potent toxicity of 2-chlorodeoxyadenosine toward human monocytes in vitro and in vivo. A novel approach to immunosuppressive therapy. *J Clin Invest*. 1990; 86(5):1480-1488.
49. Pardanani A, Hoffbrand AV, Butterfield JH, Tefferi A. Treatment of systemic mast cell disease with 2-chlorodeoxyadenosine. *Leuk Res*. 2004;28(2): 127-131.
50. Kluijn-Nelemans HC, Oldhoff JM, Van Doormaal JJ, et al. Cladribine therapy for systemic mastocytosis. *Blood*. 2003;102(13):4270-4276.
51. Aichberger KJ, Gleixner KV, Mirkina I, et al. Identification of proapoptotic Bim as a tumor suppressor in neoplastic mast cells: role of KIT D816V and effects of various targeted drugs. *Blood*. 2009;114(26):5342-5351.
52. Gabillot-Carre M, Lepelletier Y, Humbert M, et al. Rapamycin inhibits growth and survival of D816V-mutated c-kit mast cells. *Blood*. 2006;108(3): 1065-1072.
53. Gleixner KV, Mayerhofer M, Aichberger KJ, et al. PKC412 inhibits in vitro growth of neoplastic human mast cells expressing the D816V-mutated variant of KIT: comparison with AMN107, imatinib, and cladribine (2CdA) and evaluation of cooperative drug effects. *Blood*. 2006;107(2):752-759.
54. Furitsu T, Tsujimura T, Tono T, et al. Identification of mutations in the coding sequence of the proto-oncogene c-kit in a human mast cell leukemia cell line causing ligand-independent activation of c-kit product. *J Clin Invest*. 1993;92(4):1736-1744.
55. Longley BJ Jr, Metcalfe DD, Tharp M, et al. Activating and dominant inactivating c-KIT catalytic domain mutations in distinct clinical forms of human mastocytosis. *Proc Natl Acad Sci U S A*. 1999;96(4):1609-1614.
56. Longley BJ, Tyrrell L, Lu SZ, et al. Somatic c-KIT activating mutation in urticaria pigmentosa and aggressive mastocytosis: establishment of clonality in a human mast cell neoplasm. *Nat Genet*. 1996;12(3):312-314.
57. Ma Y, Zeng S, Metcalfe DD, et al. The c-KIT mutation causing human mastocytosis is resistant to STI571 and other KIT kinase inhibitors; kinases with enzymatic site mutations show different inhibitor sensitivity profiles than wild-type kinases and those with regulatory-type mutations. *Blood*. 2002;99(5):1741-1744.
58. Nakagomi N, Hirota S. Juxtamembrane-type c-kit gene mutation found in aggressive systemic mastocytosis induces imatinib-resistant constitutive KIT activation. *Lab Invest*. 2007;87(4):365-371.
59. Longley BJ, Reguera MJ, Ma Y. Classes of c-KIT activating mutations: proposed mechanisms of action and implications for disease classification and therapy. *Leuk Res*. 2001;25(7):571-576.
60. Zermati Y, De Sepulveda P, Feger F, et al. Effect of tyrosine kinase inhibitor STI571 on the kinase activity of wild-type and various mutated c-kit receptors found in mast cell neoplasms. *Oncogene*. 2003;22(5):660-664.
61. Frost MJ, Ferrao PT, Hughes TP, Ashman LK. Juxtamembrane mutant V560GKit is more sensitive to Imatinib (STI571) compared with wild-type c-kit whereas the kinase domain mutant D816VKit is resistant. *Mol Cancer Ther*. 2002; 1(12):1115-1124.
62. Lahortiga I, Akin C, Cools J, et al. Activity of imatinib in systemic mastocytosis with chronic basophilic leukemia and a PRKG2-PDGFRB fusion. *Haematologica*. 2008;93(1):49-56.
63. Droogendijk HJ, Kluijn-Nelemans HJ, van Doormaal JJ, Oranje AP, van de Loosdrecht AA, van Daele PL. Imatinib mesylate in the treatment of systemic mastocytosis: a phase II trial. *Cancer*. 2006;107(2):345-351.
64. Piccaluga PP, Rondoni M, Paolini S, Rosti G, Martinelli G, Baccharani M. Imatinib mesylate in the treatment of hematologic malignancies. *Expert Opin Biol Ther*. 2007;7(10):1597-1611.
65. Pardanani A, Elliott M, Reeder T, et al. Imatinib for systemic mast-cell disease. *Lancet*. 2003; 362(9383):535-536.
66. Paul C, Sans B, Suarez F, et al. Masitinib for the treatment of systemic and cutaneous mastocytosis with handicap: a phase 2a study. *Am J Hematol*. 2010;85(12):921-925.
67. Shah NP, Lee FY, Luo R, Jiang Y, Donker M, Akin C. Dasatinib (BMS-354825) inhibits KITD816V, an imatinib-resistant activating mutation that triggers neoplastic growth in most patients with systemic mastocytosis. *Blood*. 2006;108(1):286-291.
68. Schittenhelm MM, Shiraga S, Schroeder A, et al. Dasatinib (BMS-354825), a dual SRC/ABL kinase inhibitor, inhibits the kinase activity of wild-type, juxtamembrane, and activation loop mutant KIT isoforms associated with human malignancies. *Cancer Res*. 2006;66(1):473-481.
69. Verstovsek S, Tefferi A, Cortes J, et al. Phase II study of dasatinib in Philadelphia chromosome-negative acute and chronic myeloid diseases, including systemic mastocytosis. *Clin Cancer Res*. 2008;14(12):3906-3915.
70. Purtil D, Cooney J, Sinniah R, et al. Dasatinib therapy for systemic mastocytosis: four cases. *Eur J Haematol*. 2008;80(5):456-458.
71. Kneidinger M, Schmidt U, Rix U, et al. The effects of dasatinib on IgE receptor-dependent activation and histamine release in human basophils. *Blood*. 2008;111(6):3097-3107.
72. Aichberger KJ, Sperr WR, Gleixner KV, Kretschmer A, Valent P. Treatment responses to cladribine and dasatinib in rapidly progressing aggressive mastocytosis. *Eur J Clin Invest*. 2008; 38(11):869-873.
73. Gotlib J, Berube C, Growney JD, et al. Activity of the tyrosine kinase inhibitor PKC412 in a patient with mast cell leukemia with the D816V KIT mutation. *Blood*. 2005;106(8):2865-2870.
74. Growney JD, Clark JJ, Adelsperger J, et al. Activation mutations of human c-KIT resistant to imatinib mesylate are sensitive to the tyrosine kinase inhibitor PKC412. *Blood*. 2005;106(2):721-724.
75. Gotlib J, Kluijn-Nelemans HC, George TI, et al. KIT inhibitor midostaurin in patients with advanced systemic mastocytosis: results of a planned interim analysis of the global CPKC412D2201 trial. *Blood*. 2012;120(21):Abstract 799.
76. Samorapoompichit P, Steiner M, Lucas T, et al. Induction of apoptosis in the human mast cell leukemia cell line HMC-1 by various antineoplastic drugs. *Leuk Lymphoma*. 2003;44(3):509-515.
77. Bric L, Vuletic LB, Stepan J, et al. Mast-cell sarcoma of the tibia. *J Clin Pathol*. 2007;60(4):424-425.
78. Yoshida C, Takeuchi M, Tsuchiyama J, Sadahira Y. Successful treatment of KIT D816V-positive, imatinib-resistant systemic mastocytosis with interferon-alpha. *Intern Med*. 2009;48(22):1973-1978.
79. Lin JT, Lachmann E, Nagler W. Low back pain and myalgias in acute and relapsed mast cell leukemia: a case report. *Arch Phys Med Rehabil*. 2002;83(6):860-863.
80. Spyridonidis A, Thomas AK, Bertz H, et al. Evidence for a graft-versus-mast-cell effect after allogeneic bone marrow transplantation. *Bone Marrow Transplant*. 2004;34(6):515-519.
81. Nakamura R, Chakrabarti S, Akin C, et al. A pilot study of nonmyeloablative allogeneic hematopoietic stem cell transplant for advanced systemic mastocytosis. *Bone Marrow Transplant*. 2006; 37(4):353-358.
82. Chen TY, Chen JS, Huang WT, Su WC, Tsao CJ. Rapid engraftment of mast cells of donor origin in a case of acute myeloid leukemia with mast cell leukemia after allogeneic stem cell transplantation. *Bone Marrow Transplant*. 2003;32(1):111-114.
83. Hissard R, Moncourier L, Jacquet J. Examination of a new hematodermatitis; mastocytosis. *Presse Med*. 1951;59(82):1765-1767.
84. Brinkmann E. Mast cell reticulosis (tissular basophiloma) with histamine flushes and development into tissular basophilic leukemia. *Schweiz Med Wochenschr*. 1959;89:1046-1048.
85. Mutter RD, Tannenbaum M, Ultmann JE. Systemic mast cell disease. *Ann Intern Med*. 1963; 59:887-906.

86. Clancy RL, Gauldie J, Vallieres M, Bienenstock J, Day RP, Pineo GF. An approach to immunotherapy using antibody to IgE in mast cell leukemia. *Cancer*. 1976;37(2):693-696.
87. Kimura A, Tanaka R, Taketomi Y, et al. [A case of mastocytoma with leukemic manifestation of its immature form in the terminal stage (author's transl)]. *Hinsho Ketsueki*. 1979;20(9):1137-1146.
88. Horny HP, Parwaresch MR, Kaiserling E, et al. Mast cell sarcoma of the larynx. *J Clin Pathol*. 1986;39(6):596-602.
89. Escribano L, Orfao A, Villarrubia J, et al. Sequential immunophenotypic analysis of mast cells in a case of systemic mast cell disease evolving to a mast cell leukemia. *Cytometry*. 1997;30(2):98-102.
90. Pauls JD, Brems J, Pockros PJ, et al. Mastocytosis: diverse presentations and outcomes. *Arch Intern Med*. 1999;159(4):401-405.
91. Horny HP, Krokowski M, Feller AC, Hintze G, Sotlar K, Valent P. [Aleukemic mast cell leukemia (formerly: "malignant mastocytosis"): an extremely rare form of leukemia. A case report and simultaneously a contribution to revised classification of mastocytosis]. *Wien Klin Wochenschr*. 2002;114(5-6):222-228.
92. Akin C, Metcalfe DD. Systemic mastocytosis. *Annu Rev Med*. 2004;55:419-432.
93. Krauth MT, Fodinger M, Rebuzzi L, Greul R, Chott A, Valent P. Aggressive systemic mastocytosis with sarcoma-like growth in the skeleton, leukemic progression, and partial loss of mast cell differentiation antigens. *Haematologica*. 2007;92(12):e126-e129.
94. Yoshida M, Nishikawa Y, Yamamoto Y, et al. Mast cell leukemia with rapidly progressing portal hypertension. *Pathol Int*. 2009;59(11):817-822.
95. Joris M, Georgin-Lavialle S, Chandesris MO, et al. Mast cell leukaemia: c-KIT mutations are not always positive. *Case Report Hematol*;2012: 517546.