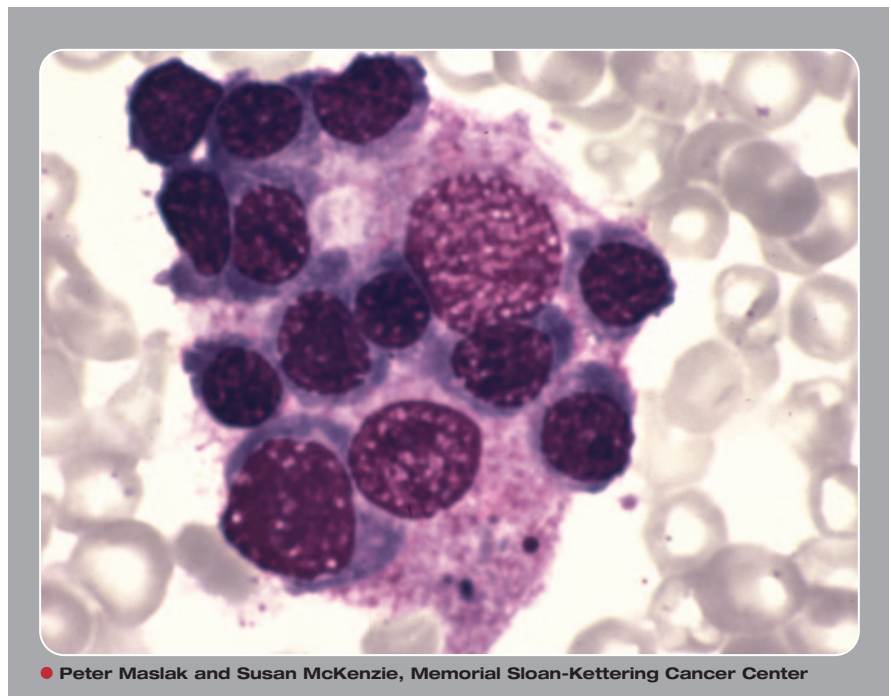


## Hemophagocytosis



**H**istiocytes ingesting red cell precursors may be found in a reactive bone marrow resulting from infection.



Many Blood Work images are provided by the **ASH IMAGE BANK**, a reference and teaching tool that is continually updated with new atlas images and images of case studies. For more information or to contribute to the Image Bank, visit [www.ashimagebank.org](http://www.ashimagebank.org).