

# Chronic graft-versus-host disease: long-term results from a randomized trial on graft-versus-host disease prophylaxis with or without anti-T-cell globulin ATG-Fresenius

Gérard Socié,<sup>1</sup> Claudia Schmoor,<sup>2</sup> Wolfgang A. Bethge,<sup>3</sup> Hellmut D. Ottinger,<sup>4</sup> Matthias Stelljes,<sup>5</sup> Axel R. Zander,<sup>6</sup> Liisa Volin,<sup>7</sup> Tapani Ruutu,<sup>7</sup> Dominik A. Heim,<sup>8</sup> Rainer Schwerdtfeger,<sup>9</sup> Karin Kolbe,<sup>10</sup> Jiri Mayer,<sup>11</sup> Johan A. Maertens,<sup>12</sup> Werner Linkesch,<sup>13</sup> Ernst Holler,<sup>14</sup> Vladimir Koza,<sup>15</sup> Martin Bornhäuser,<sup>16</sup> Hermann Einsele,<sup>17</sup> Hans-Jochem Kolb,<sup>18</sup> Hartmut Bertz,<sup>19</sup> Matthias Egger,<sup>19</sup> Olga Grishina,<sup>2</sup> and Jürgen Finke,<sup>19</sup> for the ATG-Fresenius Trial Group

<sup>1</sup>Service d'Hématologie-Greffe de Moelle, Hôpital Saint Louis, Paris, France; <sup>2</sup>Clinical Trials Center Universitätsklinikum Freiburg, Freiburg, Germany;

<sup>3</sup>Department of Hematology and Oncology, Universitätsklinikum Tübingen, Tübingen, Germany; <sup>4</sup>Klinik und Poliklinik für KMT, Universitätsklinikum Essen, Essen, Germany; <sup>5</sup>Department of Hematology and Oncology, Universitätsklinik Münster, Münster, Germany; <sup>6</sup>Department of Internal Medicine, Universitätsklinikum Hamburg-Eppendorf, Hamburg, Germany; <sup>7</sup>Department of Medicine, Helsinki University Central Hospital, Helsinki, Finland; <sup>8</sup>Department of Hematology, Universitätsspital Basel, Basel, Switzerland; <sup>9</sup>Centre of Blood and Bone Marrow Transplantation, Stiftung Deutsche Klinik für Diagnostik, Wiesbaden, Germany; <sup>10</sup>Department of Internal Medicine, Universitätsmedizin der Johannes-Gutenberg-Universität Mainz, Mainz, Germany; <sup>11</sup>Department of Internal Medicine, Hemato-oncology, University Hospital Brno, Brno, Czech Republic; <sup>12</sup>Department of Hematology, I.K. UZ Gasthuisberg, Leuven, Belgium; <sup>13</sup>Department of Hematology, Medizinisches Universitätsklinikum Graz, Graz, Austria; <sup>14</sup>Department of Hematology and Oncology, Klinikum der Universität Regensburg, Regensburg, Germany; <sup>15</sup>Department of Hematology and Oncology, Charles University Hospital, Plzen, Czech Republic; <sup>16</sup>Center for Bone Marrow Transplantation, Universitätsklinikum Carl Gustav Carus, Dresden, Germany; <sup>17</sup>Medizinische Klinik und Poliklinik II, Universitätsklinik Würzburg, Würzburg, Germany; <sup>18</sup>Department of Hematology, Klinikum Großhadern, München, Germany; and <sup>19</sup>Department of Hematology and Oncology, Universitätsklinikum Freiburg, Freiburg, Germany

**Previous randomized graft-versus-host disease (GVHD)-prophylaxis trials have failed to demonstrate reduced incidence and severity of chronic GVHD (cGVHD). Here we reanalyzed and updated a randomized phase 3 trial comparing standard GVHD prophylaxis with or without pretransplantation ATG-Fresenius (ATG-F) in 201 adult patients receiving myeloablative conditioning before transplantation from unrelated donors. The cumulative incidence of extensive cGVHD after 3 years was 12.2% in the ATG-F group**

**versus 45.0% in the control group ( $P < .0001$ ). The 3-year cumulative incidence of relapse and of nonrelapse mortality was 32.6% and 19.4% in the ATG-F group and 28.2% and 33.5% in the control group (hazard ratio [HR] = 1.21,  $P = .47$ , and HR = 0.68,  $P = .18$ ), respectively. This nonsignificant reduction in nonrelapse mortality without increased relapse risk led to an overall survival rate after 3 years of 55.2% in the ATG-F group and 43.3% in the control group (HR = 0.84,  $P = .39$ , nonsignificant). The HR for receiving**

**immunosuppressive therapy (IST) was 0.31 after ATG-F ( $P < .0001$ ), and the 3-year probability of survival free of IST was 52.9% and 16.9% in the ATG-F versus control, respectively. The addition of ATG-F to standard cyclosporine, methotrexate GVHD prophylaxis lowers the incidence and severity of cGVHD, and the risk of receiving IST without raising the relapse rate. ATG-F prophylaxis reduces cGVHD morbidity. (*Blood*. 2011; 117(23):6375-6382)**

## Introduction

Allogeneic hematopoietic stem cell transplantation (HSCT) is increasingly used worldwide as a curative therapy for malignant and nonmalignant hematologic disorders. Chronic graft-versus-host disease (cGVHD) is the leading cause of nontransplantation mortality and morbidity after allogeneic HSCT.<sup>1-3</sup> cGVHD is a multiorgan disease resembling autoimmune disorders, such as scleroderma or systemic lupus.<sup>4,5</sup> Its incidence and prevalence are rising because of transplantation practices known to be associated with increased risk of cGVHD.<sup>4,6</sup> Indeed, older patients now undergo HSCT, and more transplantations are being performed from unrelated donors and/or with peripheral blood stem cells instead of bone marrow. Furthermore, the reduced-intensity conditioning (RIC) regimens developed during recent years have also led to higher numbers of transplantations performed worldwide.<sup>7,8</sup>

However, although the acute GVHD (aGVHD) rate appears lower after RIC, the incidence of cGVHD seems to be unaffected.<sup>9</sup> Altogether, cGVHD thus remains the most challenging complication after allogeneic HSCT.<sup>10</sup>

The main risk factor for developing cGVHD is the previous occurrence of aGVHD.<sup>11</sup> Thus, transplantation physicians have focused on decreasing the rate of aGVHD to lower nonrelapse mortality (NRM) associated with both aGVHD and cGVHD. However, although calcineurin inhibitors (cyclosporine or tacrolimus) in association with methotrexate have proven to decrease the aGVHD rate in randomized studies and although new regimens, such as the association of rapamycin with tacrolimus, seem to lower the aGVHD rate in phase 2 trials, none of those prophylactic regimens has reduced the incidence rate and severity of cGVHD.<sup>12-14</sup>

Submitted January 10, 2011; accepted March 30, 2011. Prepublished online as *Blood* First Edition paper, April 5, 2011; DOI 10.1182/blood-2011-01-329821.

An Inside *Blood* analysis of this article appears at the front of this issue.

The online version of this article contains a data supplement.

The publication costs of this article were defrayed in part by page charge payment. Therefore, and solely to indicate this fact, this article is hereby marked "advertisement" in accordance with 18 USC section 1734.

© 2011 by The American Society of Hematology

A key pathophysiologic role of donor T cells in the initiation and development of cGVHD is recognized.<sup>4</sup> Donor T cells are also main effectors of aGVHD.<sup>4</sup> Based on these experimental data, T-cell depletion has been proposed as a tool to lower GVHD incidence and severity. However, whereas numerous phase 2 trials have been conducted,<sup>15</sup> few randomized trials using T-cell depletion versus drug prophylaxis have been performed.<sup>16-20</sup> Lessons from all but one<sup>21</sup> of these randomized trials indicated that, although aGVHD might be reduced and the relapse rate increased, cGVHD incidence rate and severity remained basically unchanged after T-cell depletion.

Different types of anti-T-cell globulin (ATG) preparations have been tested as part of conditioning regimens to achieve in vivo T-cell depletion so as to prevent GVHD.<sup>22</sup> Anti-Jurkat ATG-Fresenius (ATG-F), in addition to cyclosporine and methotrexate, has shown promising results in several phase 2 trials for transplantation from matched or mismatched unrelated donors.<sup>23-25</sup> We previously reported that, adding ATG-F to standard cyclosporine, methotrexate GVHD prophylaxis significantly reduced severe acute in a randomized phase 3 trial.<sup>26</sup> The cumulative incidence of aGVHD grade 3 and 4 was 11.7% in the ATG-F group versus 25.5% in the control group (adjusted hazard ratio [HR] = 0.48, 95% confidence interval [CI], 0.24-0.96,  $P = .039$ ), and cumulative incidence of grade 2 and 4 was 33.0% in the ATG-F group versus 52.0% in the control group (adjusted HR = 0.55, 95% CI, 0.35-0.85,  $P = .008$ ). These results slightly differ from results published by Finke et al<sup>26</sup> because one patient in the control group originally classified as having aGVHD grade 1 was later reviewed again and classified as grade 3. Here we present final data and unpublished results on cGVHD with extended follow-up.

## Methods

### Study design

We previously reported this randomized, multicenter, open-label, phase 3 trial to compare standard GVHD prophylaxis plus pretransplantation ATG-F to standard GVHD prophylaxis alone (control) in adult patients receiving myeloablative conditioning before hematopoietic cell transplantation from matched unrelated donors.<sup>26</sup> All patients received myeloablative conditioning regimens containing total body irradiation (8-12 Gy), or busulfan (14-16 mg/kg orally or equivalent for intravenous administration) plus cyclophosphamide ( $2 \times 60$  mg/kg) or etoposide; or regimens containing thiopeta  $\geq 15$  mg/kg or carmustine  $\geq 300$  mg/m<sup>2</sup>. All patients received cyclosporine starting on day -1 with target trough levels  $\geq 200$  ng/mL in combination with methotrexate 15 mg/m<sup>2</sup> on day 1 and 10 mg/m<sup>2</sup> on days 3, 6, and 11. Cyclosporine was recommended to be tapered after day 100. Patients in the ATG-F group received additional ATG-F at a dose of 20 mg/kg on day -3, day -2, and day -1 (total dose, 60 mg/kg) before transplantation. Concerning cGVHD, primary physicians were asked to stage organ involvement by severity (none, mild, moderate, and severe) and then to grade patients according to Shulman et al as none, limited, or severe.<sup>27</sup> Other details on regimen and patients population are summarized in the supplemental Methods (available on the *Blood* Web site; see the Supplemental Materials link at the top of the online article).

All patients gave written informed consent in accordance with the Declaration of the Helsinki, and approval was given by the University Medical Center Freiburg Institutional Review Board. Project management, statistical planning and analysis, randomization, data management, and clinical monitoring were conducted by the Clinical Trials Center, University Medical Center Freiburg, Freiburg, Germany. Patients were followed until 2 years after recruitment of the last patient, as specified in the study protocol.

Prespecified endpoints included incidence and severity of aGVHD, incidence and severity of cGVHD (cGVHD, limited/extensive and exten-

sive), incidence of relapse, incidence of NRM (defined as death without preceding relapse), disease-free survival, overall survival, infections, and adverse events. Extensive versus limited cGVHD was defined according to Seattle's group criteria.<sup>27</sup> However, aGVHD beyond day 100 in the absence of cGVHD was categorized as late aGVHD in accordance with the guidelines of the National Institutes of Health.<sup>28</sup> In case acute and chronic symptoms of GVHD were present simultaneously, the GVHD was classified as cGVHD.<sup>26</sup>

### Statistical analysis

Treatment groups were compared with respect to time to cGVHD (limited/extensive and extensive), time to cGVHD in different target organs (skin, eyes, mouth, lung, liver), time to relapse, time to NRM, overall survival time, time under immunosuppressive therapy (IST), and time to late bacterial infections (after day 100). Additional definitions of parameters are provided in the supplemental Methods.

Treatment groups with respect to time-to-event variables were compared with Cox regression models for the event-specific hazard functions using 2-sided Wald tests. Disease status (early vs advanced) and stem-cell source (bone marrow vs peripheral blood) were included for adjustment. To estimate the effect size, the HR of ATG-F versus control was calculated with 95% CI. In addition to the cumulative incidence rates<sup>29</sup> as estimators of probability of event over time, we calculated Cox model-based rates adjusted for the covariates disease status and stem-cell source.<sup>30,31</sup>

The effect of cGVHD (limited/extensive and extensive) on relapse and NRM was investigated with a Cox regression model with cGVHD as time-dependent covariate. The HRs of cGVHD versus no cGVHD were estimated with 95% CI, and cumulative hazard functions were displayed for illustration.

Treatment groups were compared with respect to the transition hazards between the states "alive and free of IST" and "alive under IST" using a Cox regression model, including disease status and stem-cell source for adjustment. Transition HRs were estimated with 95% CI using robust estimators of SEs.<sup>32</sup> The probabilities of survival under IST and of survival free of IST (adding up to the overall survival probability) over time were estimated with the Aalen-Johansen estimator<sup>33</sup> using the R package "etm."<sup>34</sup>

Statistical analysis was performed using the Statistical Analysis System, Version 9.2, and R, Version 2.11.1. The study is registered with WHO primary registers at [www.clinicaltrials.gov](http://www.clinicaltrials.gov) as #DRKS00000002 and at [http://drksneu.uniklinite-freiburg.de/drks\\_web](http://drksneu.uniklinite-freiburg.de/drks_web) as #NCT00655343.

## Results

### Study patients

The patient population has already been described in detail.<sup>26</sup> A total of 202 patients were randomized in 31 centers. One patient was not transplanted. A total of 201 patients (103 ATG-F, 98 control patients) with median age of 40 years (range, 18-60 years), transplanted between 2003 and 2007, with acute myeloid leukemia ( $n = 101$ ), myelodysplastic syndrome ( $n = 10$ ), acute lymphoid leukemia ( $n = 70$ ), chronic myeloid leukemia ( $n = 17$ ), osteomyelofibrosis ( $n = 3$ ) in early (first complete response or myelodysplastic syndrome-refractory anemia,  $n = 107$ ), or advanced status of disease (all other,  $n = 94$ ) were observed for a median follow-up time of 3 years (25% quartile, 2.5; 75% quartile, 3.9 years). Patient, disease, and transplantation characteristics are summarized in Table 1.

### cGVHD incidence and severity

Of the 170 patients alive without second transplantation at day 100 (ATG-F,  $n = 90$ ; control,  $n = 80$ ), 75 patients experienced cGVHD (limited or extensive) (ATG-F,  $n = 27$ ; control,  $n = 48$ ), with

**Table 1. Baseline patient characteristics**

Characteristic	ATG-F* (N = 103)	Control (N = 98)
<b>Patient age (median, range)</b>	40(18-60)	39(18-60)
< 40 y	47	50
≥ 40 y	56	48
<b>Donor age* (median, range)</b>	35(20-58)	37(18-56)
< 40 y	62	64
≥ 40 y	32	30
<b>Patient sex</b>		
Male	58	58
Female	45	40
<b>Patient/donor sex*</b>		
Patient male/donor female	14	13
Other	87	85
<b>Patient/donor CMV status</b>		
Negative/negative	23	44
Negative/positive	14	16
Positive/negative	32	19
Positive/positive	34	19
<b>HLA-C mismatch*</b>		
Yes	21	14
No	75	75
<b>Type of disease</b>		
Acute lymphoid leukemia	37	33
Acute myeloid leukemia	55	46
Chronic myeloid leukemia	6	11
Myelodysplastic syndrome	5	5
Osteomyelofibrosis	0	3
<b>Disease status</b>		
Early	64	43
Advanced	39	55
<b>Conditioning regimen</b>		
Total body irradiation/cyclophosphamide	54	48
Busulfan/cyclophosphamide	26	26
Total body irradiation/etoposide/ cyclophosphamide	11	6
Total body irradiation/other	7	9
No total body irradiation/other	5	9
<b>Stem cell source</b>		
Bone marrow	21	16
Peripheral blood	82	82

Data are N or median (range).

HLA-C indicates human leukocyte antigen locus C.

\*Donor age unknown for 13 donors (ATG-F, N = 9; control, N = 4), donor sex unknown for 2 donors (ATG-F, N = 2; control, N = 0), and HLA-C mismatch unknown for 17 patients (ATG-F, N = 7; control, N = 9).

47 patients presenting extensive cGVHD (ATG-F, n = 11; control, n = 36). Detailed patient presentation is provided as supplemental Table 1. The cumulative incidence of extensive cGVHD after 3 years was 12.2% in the ATG-F group versus 45.0% in the control group (HR = 0.20, 95% CI, 0.10-0.39,  $P < .0001$ , Figure 1A). Cumulative incidence of limited/extensive cGVHD was 30.0% and 60.0% in the ATG-F versus control, respectively (HR = 0.34, 95% CI, 0.21-0.55,  $P < .0001$ ). Treatment effect was also assessed in different subgroups of patients defined by prognostic factors (Figure 1B). ATG-F significantly reduced cGVHD (defined as limited/extensive or extensive alone) whatever the patient sex, patient or donor age, type of disease, disease status, stem cell source, or patient cytomegalovirus status was. Compared with the results shown in Finke et al<sup>26</sup> (supplemental Methods), Figure 1B now shows slightly different, but similar, results after a median follow-up time of 3 years. The cumulative incidence of late aGVHD after 3 years was 4.4% in the ATG-F group versus 11.3% in the control group.

We then analyzed how ATG-F prophylaxis affected cGVHD in different target organs. As shown in supplemental Table 1 and supplemental Figure 2, cumulative incidences were reduced in all main cGVHD target organs: skin (3-year cumulative incidence, 5.6% vs 27.0%; ATG-F vs control, HR = 0.18, 95% CI, 0.07-0.48,  $P = .0006$ ), eyes (2.2% vs 20.7%; HR = 0.10, 95% CI, 0.02-0.45,  $P = .0025$ ), mouth (4.4% vs 18.8%; HR = 0.24, 95% CI, 0.08-0.74,  $P = .013$ ), lung (3.3% vs 16.3%; HR = 0.17, 95% CI, 0.05-0.61,  $P = .006$ ), and liver (1.1% vs 21.2%; HR = 0.05, 95% CI, 0.01-0.39,  $P = .004$ ). The incidences in other, less involved target organs were not calculated because of few events, but crude numbers are described in a footnote to supplemental Table 1.

### Impact of cGVHD on relapse rate and NRM

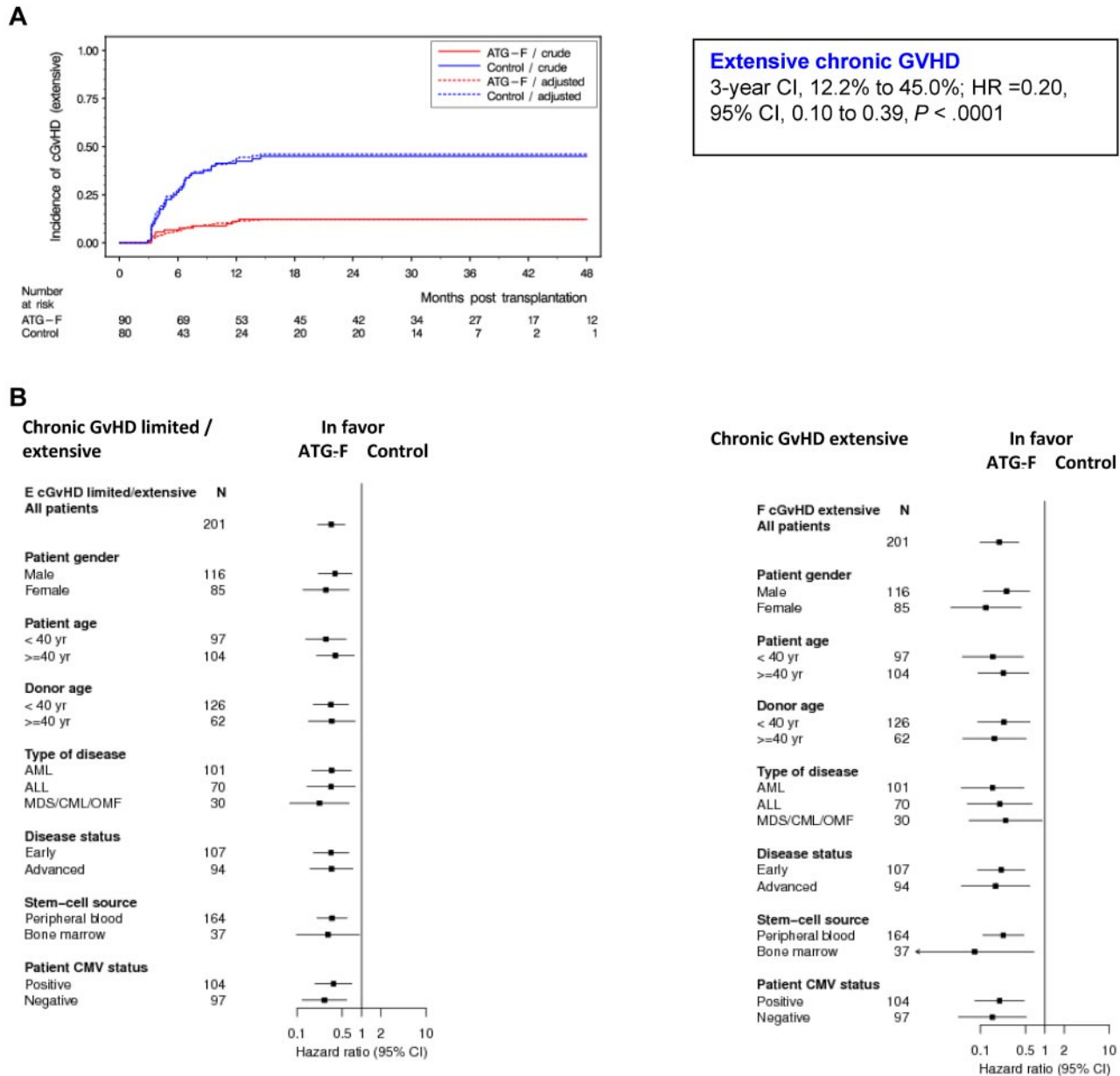
cGVHD lowered the relapse rate, resulting in an HR of 0.50 (95% CI, 0.26-0.96,  $P = .037$ ; Figure 2A). Of note, GVHD prophylaxis with ATG-F was not associated with increased risk of relapse because the 3-year cumulative incidence of relapse was 32.6% in the ATG-F group and 28.2% in the control group (shown in supplemental Figure 3B; HR = 1.21, 95% CI, 0.72-2.02,  $P = .47$ ). There was a trend to an increase in NRM by extensive cGVHD, resulting in an HR of 2.06 (95% CI, 0.93-4.58,  $P = .075$ ; Figure 2B); the 3-year cumulative incidence of NRM was 19.4% in the ATG-F group and 33.5% in the control group (shown as supplemental Figure 3C; HR = 0.68, 95% CI, 0.38-1.20,  $P = .18$ ). This still nonsignificant reduction in NRM without increased relapse risk led to an overall survival after 3 years of 55.2% in the ATG-F group and 43.3% in the control group (HR = 0.84, 95% CI, 0.56-1.25,  $P = .39$ ; Figure 3A), and similar disease-free survival in both groups (supplemental Figure 3A).

### Effect of ATG-F on treatment duration and time to stop IST

The HR for receiving IST was 0.31 (95% CI, 0.18-0.55,  $P < .0001$ ), and that for being able to stop IST was 2.02 (95% CI, 1.41-2.91,  $P = .0001$ , ATG-F vs control, respectively). At 3 years, the probability of being alive and free of IST was 52.9% and 16.9%, and that of being alive and still under IST was 2.4% and 26.3% in the ATG-F versus control, respectively (Figure 3B-C). As can be seen in Figure 3, the probabilities of being alive and free of IST and of being alive under IST add up to the probability of overall survival. Although we see only a slight survival advantage of ATG-F versus control, our results show that patients in the ATG-F group predominantly live free of IST whereas patients in the control group predominantly live under IST.

### Effect of ATG-F on late bacterial infection and cause of late nonrelapse-related death

We previously reported the occurrence of 4 fatal cases of post-transplantation lymphoproliferative disorders in patients treated in the ATG-F arm. In the present paper aiming to study cGVHD, we focus our attention to late bacterial infections, which are the main cause of mortality and lead to significant morbidity in patients with cGVHD.<sup>4</sup> We analyzed here the distribution of these infectious complications. Main bacterial species were *Streptococcus*, *Staphylococcus*, *Klebsiella*, and *Pseudomonas* species (Table 2). The main infectious locations were bloodstream (n = 38, 17 vs 21), urinary tract (n = 19, 15 vs 4), oral/gastrointestinal (n = 18, 10 vs 8), and pulmonary (n = 18, 6 vs 12; Table 2) in the ATG-F group versus control group, respectively. The 3-year cumulative incidence of late bacterial infection (after day 100) was 26.3% versus 38.8% (Figure 4) in the ATG-F group versus control group,



**Figure 1. Cumulative incidence of extensive chronic GVHD by treatment groups overall and by prognostic subgroups.** (A) Effect of treatment on extensive cGVHD. (B) Treatment effects within prognostic subgroups with regard to cGVHD, analyzed with Cox regression models adjusted for disease status and stem-cell source.

respectively (HR = 0.68, 95% CI, 0.39-1.17, *P* = .16). Main causes of non-relapse-related deaths over the long-term (> 100 days) included infection (5 and 4 patients) and cGVHD (0 and 4 patients), in the ATG-F group versus control group, respectively (Table 2). Overall updated causes of death are summarized in supplemental Table 2.

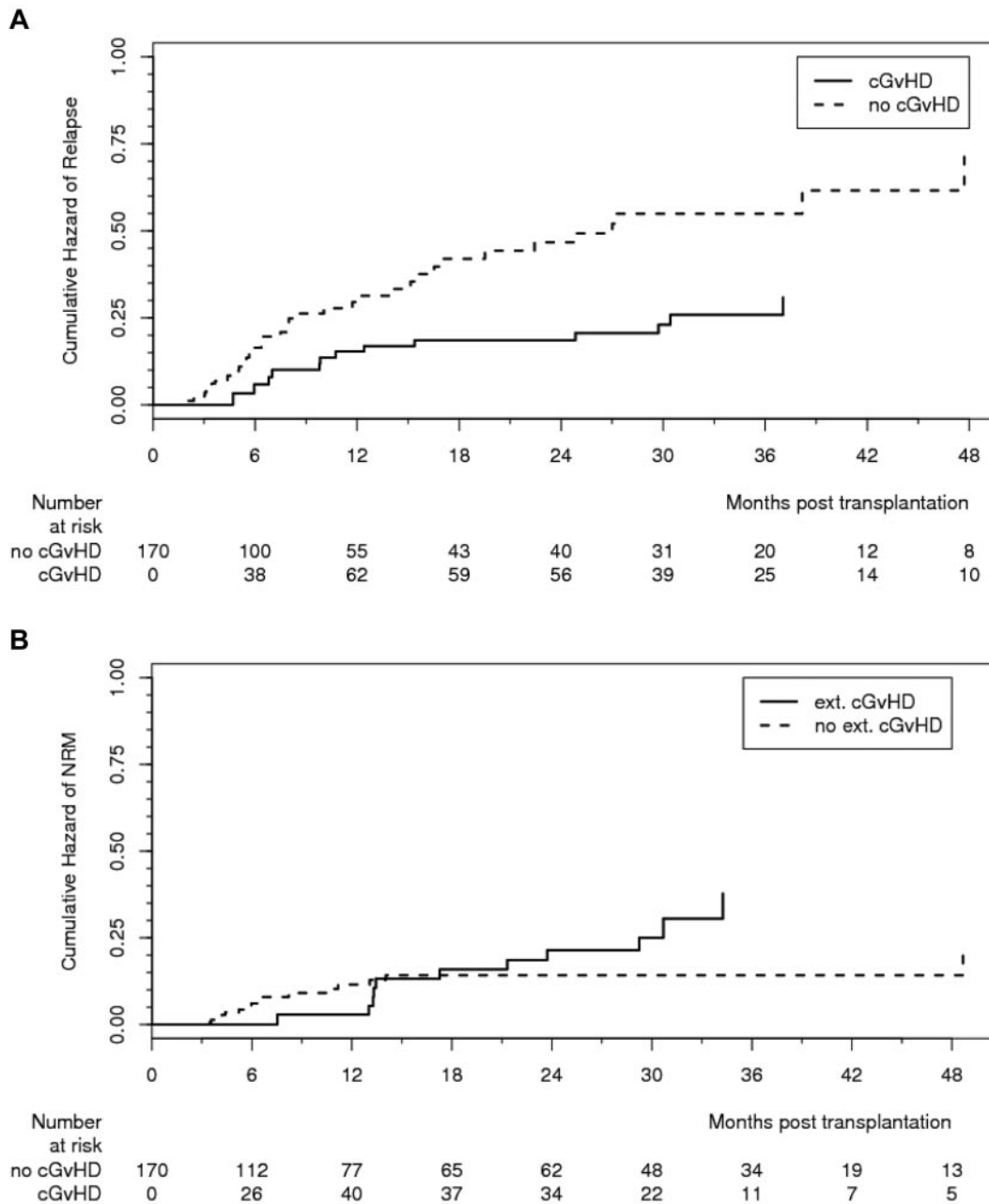
**Prognostic factors for developing cGVHD**

We finally aimed to study prognostic factors for developing cGVHD in our randomized trial (supplemental Table 4). Cox regression analyses of prognostic factors for developing extensive cGVHD adjusted for treatment arm and aGVHD (as a time-dependent factor) revealed 2 factors associated with increased extensive cGVHD risk: donor age of 40 years or more (HR = 2.01, 95% CI, 1.08-3.72, *P* = .027) and type of disease (HRs = 3.88, 95% CI, 1.25-12.0, 1.56, 0.76-3.20, and 2.63, 1.12-6.16 for patients

with myelodysplastic syndrome, acute lymphoid leukemia, and chronic myeloid leukemia/osteomyelofibrosis compared with acute myeloid leukemia, respectively; *P* = .039; supplemental Table 4A). Factors found to be associated with increased cGVHD risk (limited or extensive) were type of disease (HRs = 1.88, 95% CI, 0.75-4.73, 1.60, 0.88-2.90, and 2.78, 1.38-5.58, for patients with myelodysplastic syndrome, acute lymphoid leukemia, and chronic myeloid leukemia/osteomyelofibrosis compared with acute myeloid leukemia, respectively; *P* = .023) and a non-irradiation-based conditioning regimen (HR = 2.58, 95% CI, 1.49-4.46, *P* = .0007; supplemental Table 4B).

**Discussion**

We present here data on cGVHD with extended follow-up (median, 3 years) on the largest randomized trial comparing standard GVHD

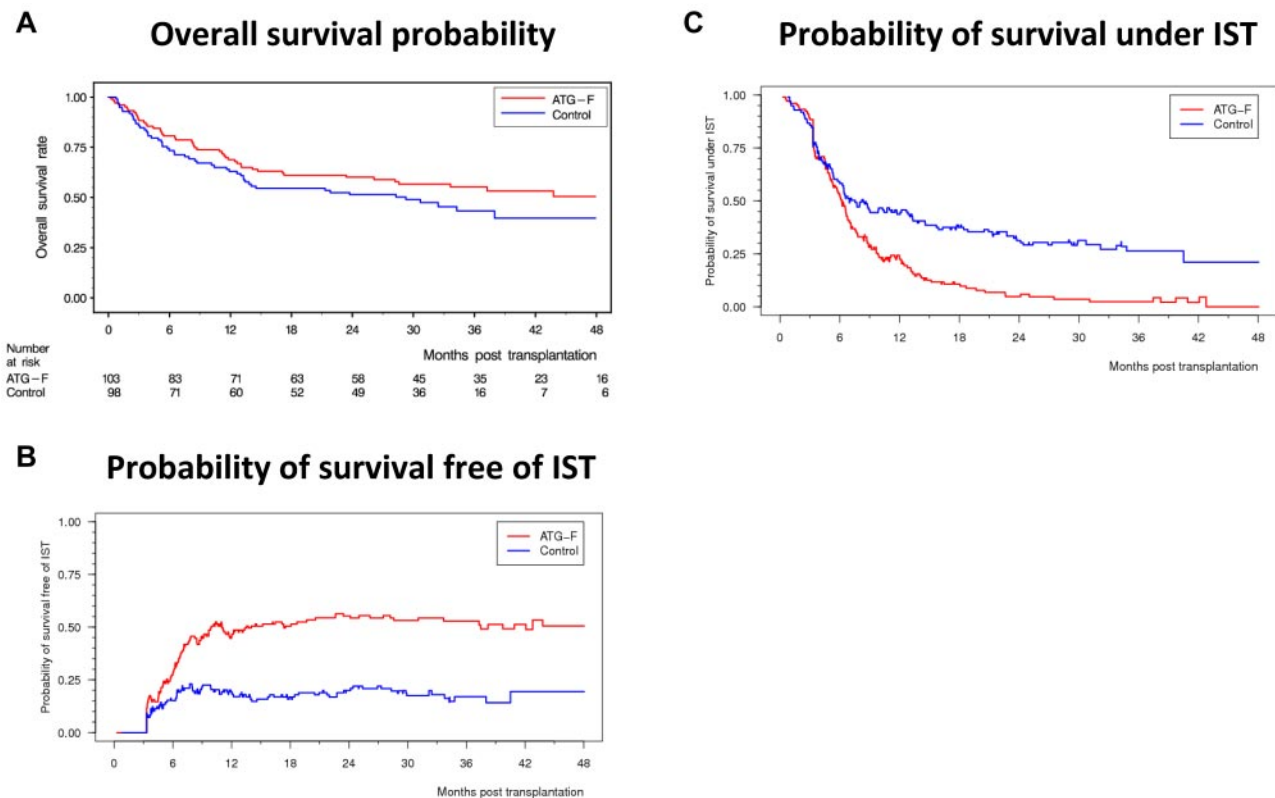


**Figure 2. Effect of chronic GVHD on relapse and nonrelapse mortality.** (A) Effect of cGVHD (limited and extensive) on relapse effect estimated from Cox model with time-dependent covariate (HR = 0.49, 95% CI, 0.26-0.96, *P* = .037). (B) Effect of cGVHD (extensive) on NRM. Effect estimated from Cox model with time-dependent covariate (HR = 2.06, 95% CI, 0.93-4.58, *P* = .075).

prophylaxis versus standard prophylaxis plus ATG. The addition of ATG-F to cyclosporine, methotrexate GVHD prophylaxis significantly reduces the incidence and severity of cGVHD and the time to treat patients with IST without increasing relapse rate. In addition, our data showed that not only incidence, but disease severity and organ involvement, strongly favors the use of ATG-F. These data demonstrate that ATG-F prophylaxis decreases cGVHD morbidity.

Although ex vivo T-cell depletion has been used for decades with the aim to reduce aGVHD, there have been very few randomized trials.<sup>15-20</sup> Indeed, one randomized study of hematopoietic cell transplantation from human leukocyte antigen-identical sibling donors already in the late 1980s demonstrated a decrease in

the incidence of aGVHD, no difference in cGVHD, and an increased risk of relapse and rejection.<sup>16,17</sup> Furthermore, T-cell depletion has been associated with increased risk of post-transplantation lymphoproliferative disorder.<sup>15-20</sup> This risk of post-transplantation lymphoproliferative disorder was also found in our trial with 4 fatal cases in the ATG-F arm compared with no case in the control group. Only 2 randomized trials have been conducted on the use of ATG or T-cell depletion in hematopoietic cell transplantation from unrelated donors.<sup>18,19</sup> An American trial<sup>17</sup> compared 405 patients receiving bone marrow from unrelated donors, 2 different in vitro T-cell depletion methods (by anti-T-cell monoclonal antibody T10B9 [MEDI-500, Medimmune] or counter flow elutriation in combination with in vivo use of equine



**Figure 3.** Split of overall survival probability into probability of survival free of IST and probability of survival under IST. (A) Overall survival probability. (B) Probability of survival free of IST. (C) Probability of survival under IST.

antithymocyte globulin [Pharmacia/Pfizer] and cyclosporine to a control group receiving cyclosporine and short-course methotrexate alone). The experimental group presented less severe aGVHD, but T-cell depletion had no influence on the incidence of cGVHD or survival.<sup>17</sup> In the Italian sequential trial<sup>19,21</sup> testing in vivo T-cell depletion, a total of 109 patients received bone marrow from unrelated donors and standard GVHD prophylaxis with or without antithymocyte globulin (Thymoglobulin, Genzyme). The reduction in GVHD was accompanied by a higher risk for lethal infections resulting in no improvement in survival. Extensive cGVHD developed more frequently in patients not given ATG.<sup>20</sup> In a retrospective, nonrandomized analysis, the French registry<sup>35</sup> most recently assessed the impact of rabbit ATG, incorporated within a standard myeloablative conditioning regimen before allogeneic stem cell transplantation using unrelated donors. In their retrospective series of 120 patients with leukemia, 69 did not receive ATG, whereas 51 patients did. With a median follow-up of

30.3 months, the cumulative incidence of extensive cGVHD was significantly lower in the ATG group compared with the “no-ATG” group (4% vs 32%, respectively;  $P = .0017$ ). In multivariate analysis, the absence of ATG use was the strongest parameter associated with increased risk of extensive cGVHD (RR = 7.14; 95% CI, 1.7-33.3,  $P = .008$ ). At 2 years, the probability of NRM, relapse, and overall and leukemia-free survivals did not significantly differ between the “no-ATG” and “ATG” groups. Thus, our trial definitively proves results suggested by the French retrospective analysis, as well as data suggested by the Italian sequential trials on a large patient population mainly receiving peripheral blood stem cells.

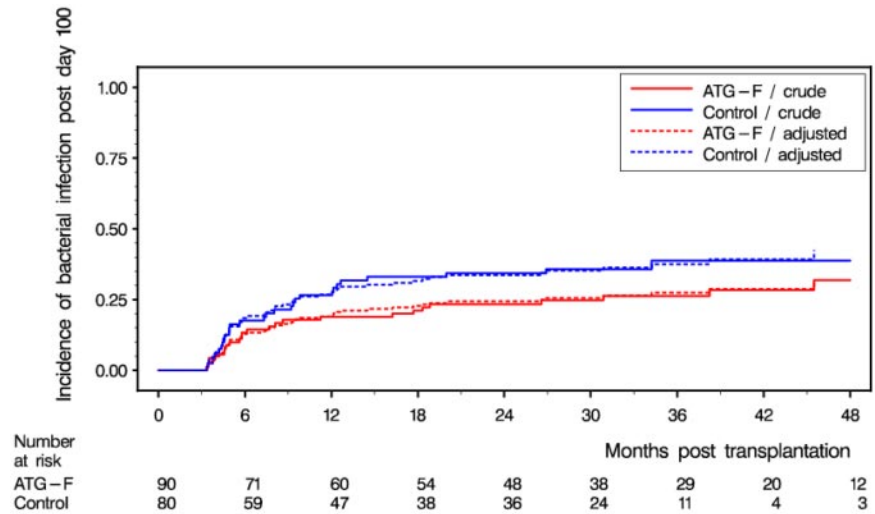
cGVHD is associated with a strong antileukemic effect,<sup>4,6</sup> as confirmed here because cGVHD was associated with a nearly 50% decrease in relapse risk. However, in contrast with other reports using T-cell depletion showing increased propensity to relapse,<sup>15</sup> GVHD prophylaxis with ATG-F was not associated with increased

**Table 2.** Late bacterial infection (> day 100, 121 infections occurring in 54 patients: 25 ATG-F, 29 control)

Species	N	Location: bloodstream/ pneumonia/urinary/other	Median elapsed time (range)	ATG-F/control
Streptococcal	29	6/2/10/11	315 (120-1479)	17/12
Staphylococcal	22	13/5/0/4	223 (105-1164)	9/13
Klebsiella	11	3/1/4/3	227 (103-431)	8/3
Pseudomonas	16	9/0/0/7	190 (118-418)	2/14
Other specified	20	6/4/3/7	292 (107-1390)	9/11
Other nonspecified	23	10/6/2/5	176 (101-1385)	12/11
All	121	47/18/19/37	245 (101-1479)	57/64

Infectious-related deaths after day 100: ATG-F arm: 5 deaths: streptococcal sepsis (1), sepsis, not otherwise specified (2), CMV disease (1), and influenzae pneumonia (1). Of those 5 deaths, the 2 sepsis occurred in context of cGVHD. Control arm: 4 deaths: toxoplasma (1), Pseudomonas species (1), aspergillosis (1), and legionella (1). All 4 of those deaths occurred in context of cGVHD.

**Figure 4. Effect of treatment on late bacterial infection.** Treatment effect estimated from Cox model adjusted for disease status and stem-cell source (HR [ATG-F vs control]= 0.68, 95% CI, 0.39-1.17, *P* = .16).



risk of relapse. However, the study was not powered to detect differences in relapse risk among the 2 groups.

In addition to this graft-versus-leukemia effect, there was a trend that extensive cGVHD also raised NRM in our cohort, as reported by others.<sup>1,3,10,36-39</sup> However, while decreasing 3-year NRM incidence by > 10% (on an absolute scale), ATG-F did not lead to a large improvement in overall survival on a relative scale (ATG-F 55.2% vs control 43.3%). Improved supportive care and antimicrobial therapies of patients with cGVHD<sup>40</sup> most probably explain why decreased incidence and severity of cGVHD in the ATG-F arm do not yet translate to improved survival. Similarly, although the risk of severe bacterial infections was higher in the control group, as expected from cGVHD rates, neither the late bacterial infection rate nor bacterial-related deaths significantly differs between the 2 treatment groups.

Finally, as discussed elsewhere, the most stringent proof of any prophylactic or treatment efficacy in cGVHD is to compare its ability to provide quality-of-life-improved survival without immunosuppressive drug therapy between 2 treatment groups.<sup>37,41-44</sup> Indeed, the cGVHD course is typified by flare and remission episodes, and the withdrawal of any drugs to attain immune tolerance is the ultimate goal in treating this disease. Our data demonstrate that patients in the ATG-F group had a 100% better chance than the controls of being able to stop IST. At 3 years, the ATG-F group’s probability of being alive and free of IST was 3-fold higher than that of the control group.

Prognostic factors for developing cGVHD after adjusting for previous aGVHD and ATG-F treatment showed that patients with acute myelogenous leukemia had a slightly lower risk of developing cGVHD and that older donor’s age and the use of a non-irradiation-based conditioning regimen raised the risk. We have no formal explanations for those results. These results must be confirmed because multiple comparisons were performed.

However, it needs to be made very clear that (1) these data do not necessarily apply to other brands of ATG, and (2) that they do apply only to ablative HSCT. Furthermore, in a recent retrospective Center for International Blood and Marrow Transplant Research analysis of RIC HSCT using, in a nonrandomized setting, other ATG brands showed worse outcomes with ATG.<sup>45</sup> Thus, our results may not apply to RIC HSCT. Finally, most of the stem cell products used in our study were grafts from peripheral blood, although there

were minorities of marrow infusions: thus, our data may not apply to marrow grafts in which there is a lower incidence of cGVHD.

In conclusion, the addition of ATG-F to standard GVHD prophylaxis significantly reduces the incidence, severity, and morbidity of cGVHD and the risk of receiving IST. It does not increase the risk of relapse and may ultimately provide a long-term survival advantage.

### Acknowledgments

The authors thank Jan Beyersmann and Anika Buchholz, Institute of Medical Biometry and Medical Informatics, University Medical Center, Freiburg, Germany, for support of the statistical analysis, and Carole Cuerten, Department of Hematology and Oncology, University Medical Center, Freiburg, Germany, for editorial assistance.

The study was supported by Fresenius Biotech GmbH, Germany.

### Authorship

Contribution: G.S., W.A.B., H.D.O., M.S., A.R.Z., L.V., T.R., D.A.H., R.S., K.K., J.M., J.A.M., W.L., E.H., V.K., M.B., H.E., H.-J.K., H.B., M.E., and J.F. contributed to the recruitment and treatment of patients in the trial; J.F., C.S., O.G., and G.S. contributed to the design and analysis of the trial; and all authors contributed to the interpretation of the data and saw and approved the final version of the manuscript.

A complete list of the ATG-Fresenius Trial Group members appears in the “Appendix.”

Conflict-of-interest disclosure: J.F. has received travel and lecture fees from Fresenius Biotech GmbH. W.A.B. has received consultancy and lecture fees from Fresenius Biotech GmbH. K.K. has received travel and lecture fees from Fresenius Biotech GmbH. H.B. has received travel and lecture fees from Fresenius Biotech GmbH. M.E. has received travel fees from Fresenius Biotech GmbH. The other authors declare no competing financial interests.

Correspondence: Gérard Socié, Hematology/Transplantation, Hospital Saint Louis & University Paris VII, 1 Avenue Claude Vellefaux 75475 Paris, Cedex 10, France; e-mail: gerard.socie@sls.aphp.fr.

## References

- Socie G, Stone JV, Wingard JR, et al. Long-term survival and late deaths after allogeneic bone marrow transplantation: Late Effects Working Committee of the International Bone Marrow Transplant Registry. *N Engl J Med*. 1999;341(1):14-21.
- Bhatia S, Francisco L, Carter A, et al. Late mortality after allogeneic hematopoietic cell transplantation and functional status of long-term survivors: report from the Bone Marrow Transplant Survivor Study. *Blood*. 2007;110(10):3784-3792.
- Martin PJ, Counts GW Jr, Appelbaum FR, et al. Life expectancy in patients surviving more than 5 years after hematopoietic cell transplantation. *J Clin Oncol*. 2010;28(6):1011-1016.
- Lee SJ, Vogelsang G, Flowers ME. Chronic graft-versus-host disease. *Biol Blood Marrow Transplant*. 2003;9(4):215-233.
- Bhushan V, Collins RH Jr. Chronic graft-vs-host disease. *JAMA*. 2003;290(19):2599-2603.
- Vogelsang GB. How I treat chronic graft-versus-host disease. *Blood*. 2001;97(5):1196-1201.
- Gratwohl A, Baldomero H, Aljurf M, et al. Hematopoietic stem cell transplantation: a global perspective. *JAMA*. 2010;303(16):1617-1624.
- Bertz H, Potthoff K, Finke J. Allogeneic stem-cell transplantation from related and unrelated donors in older patients with myeloid leukemia. *J Clin Oncol*. 2003;21(8):1480-1484.
- Mielcarek M, Martin PJ, Leisenring W, et al. Graft-versus-host disease after nonmyeloablative versus conventional hematopoietic stem cell transplantation. *Blood*. 2003;102(2):756-762.
- Socie G, Salooja N, Cohen A, et al. Nonmalignant late effects after allogeneic stem cell transplantation. *Blood*. 2003;101(9):3373-3385.
- Atkinson K, Horowitz MM, Gale RP, et al. Risk factors for chronic graft-versus-host disease after HLA-identical sibling bone marrow transplantation. *Blood*. 1990;75(12):2459-2464.
- Deeg HJ. How I treat refractory acute GVHD. *Blood*. 2007;109(10):4119-4126.
- Antin JH, Kim HT, Cutler C, et al. Sirolimus, tacrolimus, and low-dose methotrexate for graft-versus-host disease prophylaxis in mismatched related donor or unrelated donor transplantation. *Blood*. 2003;102(5):1601-1605.
- Cutler C, Li S, Ho VT, et al. Extended follow-up of methotrexate-free immunosuppression using sirolimus and tacrolimus in related and unrelated donor peripheral blood stem cell transplantation. *Blood*. 2007;109(7):3108-3114.
- Ho VT, Soiffer RJ. The history and future of T-cell depletion as graft-versus-host disease prophylaxis for allogeneic hematopoietic stem cell transplantation. *Blood*. 2001;98(12):3192-3204.
- Maraninchi D, Gluckman E, Blaise D, et al. Impact of T-cell depletion on outcome of allogeneic bone-marrow transplantation for standard-risk leukaemias. *Lancet*. 1987;2(8552):175-178.
- Blaise D, Gravis G, Maraninchi D. Long-term follow-up of T-cell depletion for bone marrow transplantation. *Lancet*. 1993;341(8836):51-52.
- Wagner JE, Thompson JS, Carter SL, Kernan NA. Effect of graft-versus-host disease prophylaxis on 3-year disease-free survival in recipients of unrelated donor bone marrow (T-cell Depletion Trial): a multi-centre, randomised phase II-III trial. *Lancet*. 2005;366(9487):733-741.
- Bacigalupo A, Lamparelli T, Bruzzi P, et al. Antithymocyte globulin for graft-versus-host disease prophylaxis in transplants from unrelated donors: 2 randomized studies from Gruppo Italiano Trapianti Midollo Osseo (GITMO). *Blood*. 2001;98(10):2942-2947.
- Pavletic SZ, Carter SL, Kernan NA, et al. Influence of T-cell depletion on chronic graft-versus-host disease: results of a multicenter randomized trial in unrelated marrow donor transplantation. *Blood*. 2005;106(9):3308-3313.
- Bacigalupo A, Lamparelli T, Barisione G, et al. Thymoglobulin prevents chronic graft-versus-host disease, chronic lung dysfunction, and late transplant-related mortality: long-term follow-up of a randomized trial in patients undergoing unrelated donor transplantation. *Biol Blood Marrow Transplant*. 2006;12(5):560-565.
- Mohty M. Mechanisms of action of antithymocyte globulin: T-cell depletion and beyond. *Leukemia*. 2007;21(7):1387-1394.
- Finke J, Schmoor C, Lang H, Potthoff K, Bertz H. Matched and mismatched allogeneic stem-cell transplantation from unrelated donors using combined graft-versus-host disease prophylaxis including rabbit anti-T lymphocyte globulin. *J Clin Oncol*. 2003;21(3):506-513.
- Schleuning M, Gunther W, Tischer J, Ledderose G, Kolb HJ. Dose-dependent effects of in vivo antithymocyte globulin during conditioning for allogeneic bone marrow transplantation from unrelated donors in patients with chronic phase CML. *Bone Marrow Transplant*. 2003;32(3):243-250.
- Zander AR, Kroger N, Schleuning M, et al. ATG as part of the conditioning regimen reduces transplant-related mortality (TRM) and improves overall survival after unrelated stem cell transplantation in patients with chronic myelogenous leukemia (CML). *Bone Marrow Transplant*. 2003;32(4):355-361.
- Finke J, Bethge WA, Schmoor C, et al. Standard graft-versus-host disease prophylaxis with or without anti-T-cell globulin in haematopoietic cell transplantation from matched unrelated donors: a randomised, open-label, multicentre phase 3 trial. *Lancet Oncol*. 2009;10(9):855-864.
- Shulman HM, Sullivan KM, Weiden PL, et al. Chronic graft-versus-host syndrome in man: a long-term clinicopathologic study of 20 Seattle patients. *Am J Med*. 1980;69(2):204-217.
- Filipovich AH, Weisdorf D, Pavletic S, et al. National Institutes of Health consensus development project on criteria for clinical trials in chronic graft-versus-host disease: I. Diagnosis and staging working group report. *Biol Blood Marrow Transplant*. 2005;11(12):945-956.
- Gooley TA, Leisenring W, Crowley J, Storer BE. Estimation of failure probabilities in the presence of competing risks: new representations of old estimators. *Stat Med*. 1999;18(6):695-706.
- Makuch RW. Adjusted survival curve estimation using covariates. *J Chronic Dis*. 1982;35(6):437-443.
- Rosthøj S, Andersen PK, Abildstrom SZ. SAS macros for estimation of the cumulative incidence functions based on a Cox regression model for competing risks survival data. *Comput Methods Programs Biomed*. 2004;74(1):69-75.
- Lin DY, Wei LJ. The robust inference for the proportional hazards model. *J Am Stat Assoc*. 1989;84:1074-1078.
- Andersen PK, Borgan O, Gill RD, Keiding N. *Statistical Models Based on Counting Processes*. New York, NY: Springer-Verlag; 1993.
- Allignol A, Schumacher M, Beyersmann J. Empirical transition matrix of multistate models: the ETM package. *J Stat Software*. 2011;7(13):1-15.
- Mohty M, Labopin M, Balère ML, et al. Antithymocyte globulins and chronic graft-versus-host disease after myeloablative allogeneic stem cell transplantation from HLA-matched unrelated donors: a report from the Société Française de Greffe de Moelle et de Thérapie Cellulaire. *Leukemia*. 2010;24(11):1867-1874.
- Lee SJ, Klein JP, Barrett AJ, et al. Severity of chronic graft-versus-host disease: association with treatment-related mortality and relapse. *Blood*. 2002;100(2):406-414.
- Stewart BL, Storer B, Storek J, et al. Duration of immunosuppressive treatment for chronic graft-versus-host disease. *Blood*. 2004;104(12):3501-3506.
- Sullivan KM, Agura E, Anasetti C, et al. Chronic graft-versus-host disease and other late complications of bone marrow transplantation. *Semin Hematol*. 1991;28(3):250-259.
- Yakoub-Agha I, Mesnil F, Kuentz M, et al. Allogeneic marrow stem-cell transplantation from human leukocyte antigen-identical siblings versus human leukocyte antigen-allelic-matched unrelated donors (10/10) in patients with standard-risk hematologic malignancy: a prospective study from the French Society of Bone Marrow Transplantation and Cell Therapy. *J Clin Oncol*. 2006;24(36):5695-5702.
- Couriel D, Carpenter PA, Cutler C, et al. Ancillary therapy and supportive care of chronic graft-versus-host disease: National Institutes of Health Consensus Development Project on Criteria for Clinical Trials in Chronic Graft-Versus-Host Disease: V. Ancillary Therapy and Supportive Care Working Group Report. *Biol Blood Marrow Transplant*. 2006;12(4):375-396.
- Socie G, Ritz J, Martin PJ. Current challenges in chronic graft-versus-host disease. *Biol Blood Marrow Transplant*. 2010;16(1 suppl):S146-S151.
- Sorror ML, Leisenring W, Deeg HJ, Martin PJ, Storb R. Twenty-year follow-up of a controlled trial comparing a combination of methotrexate plus cyclosporine with cyclosporine alone for prophylaxis of graft-versus-host disease in patients administered HLA-identical marrow grafts for leukemia. *Biol Blood Marrow Transplant*. 2005;11(10):814-815.
- Griffith LM, Pavletic SZ, Lee SJ, Martin PJ, Schultz KR, Vogelsang GB. Chronic graft-versus-host disease: implementation of the National Institutes of Health Consensus Criteria for Clinical Trials. *Biol Blood Marrow Transplant*. 2008;14(4):379-384.
- Martin PJ, Weisdorf D, Przepiorka D, et al. National Institutes of Health Consensus Development Project on Criteria for Clinical Trials in Chronic Graft-versus-Host Disease: VI. Design of Clinical Trials Working Group report. *Biol Blood Marrow Transplant*. 2006;12(5):491-505.
- Soiffer R, LeRademacher J, Ho VT, et al. Impact of in vivo T-cell depletion on outcome of reduced intensity conditioning hematopoietic cell transplantation for hematologic malignancies [Abstract]. *Blood*. 2010;116(21):951.